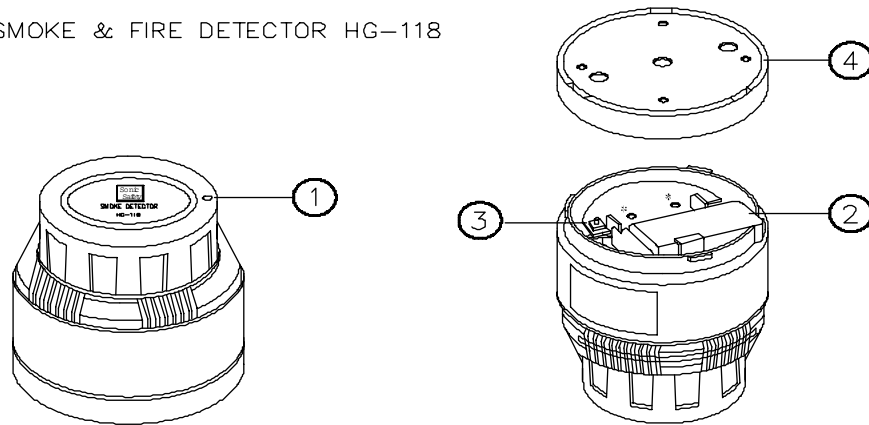


Smoke Detector HG-118

This detector is armed in 24 hours status. When it detects smoke, the red LED is lighting and trigger the auto-dialer of Main Console . In the false alarm, the smoke detector will turn back to the detecting mode by itself.

SMOKE & FIRE DETECTOR HG-118



NO.	DESCRIPTION
1	LED
2	BATTERY
3	TEST BUTTON
4	MOUND HOLDER

Notes

In order to have the smoke detector operated properly, it is recommended that you do Not install it in following areas:

1. In kitchen – an area where the smoke from cooking might cause an unwanted alarm.
2. Near by ventilation fan, flower essence lamps or air-conditioners which may affect the sensitivity of the detector.
3. Near by ceiling beams or over the cabinets, the stagnant air in these areas may affect the sensitivity of the detectors.
4. In the peak of an ‘A’ frame type of ceiling.

Powering up the detector

1. Remove the plastic cap.
2. Put one 9V battery into the battery housing.

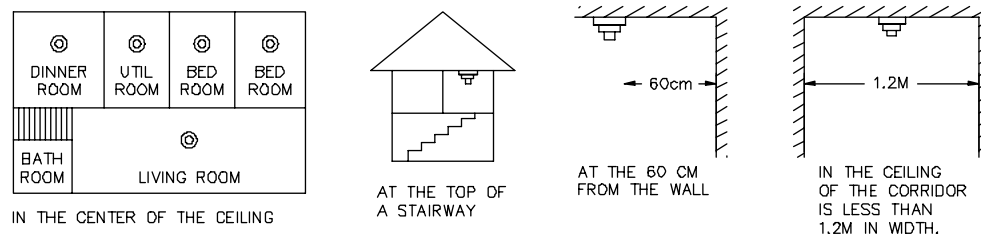
Setting the Smoke detector

Under Learning Mode, to press the Test button and the main console will sound ‘beep’ To complete the setting successfully.

Installation for Smoke Detector

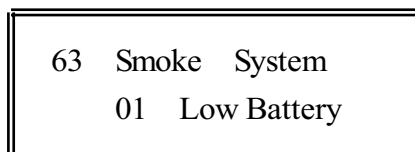
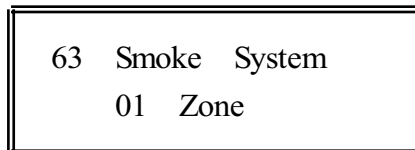
1. Mount the base portion of the unit firmly with the two screws provided to the ceiling where you need to be protected.
2. Refit the top part of Smoke detector to the firmly mounted base according to the Following figures:

Preferred Location



LCD display on the Main Console

When trigger out the alarm system on emergency, or the status of low battery, the LCD Display shown as below:



Specifications

1. Detector sensor : Photoelectric chamber.
2. Sensitivity : Comply with UL 217.
3. Operation temperature : 32F – 122F (0° - 50° C)
3. Humidity : Maxi. 90% ±5%
4. Low Battery : the main console unit emits two short 'beeps' and LCD displaying 'MSG'. Please check battery power and replace with new battery immediately.

Note

1. The changes or modifications not expressly approved by the party responsible for compliance could void the user's authority to operate the equipment.
2. This device complies with part 15 of the FCC Rules. Operation is subject to the following two conditions: (1) this device may not cause harmful interference and (2) this device must accept any interference received, including interference that may cause undesired operation.