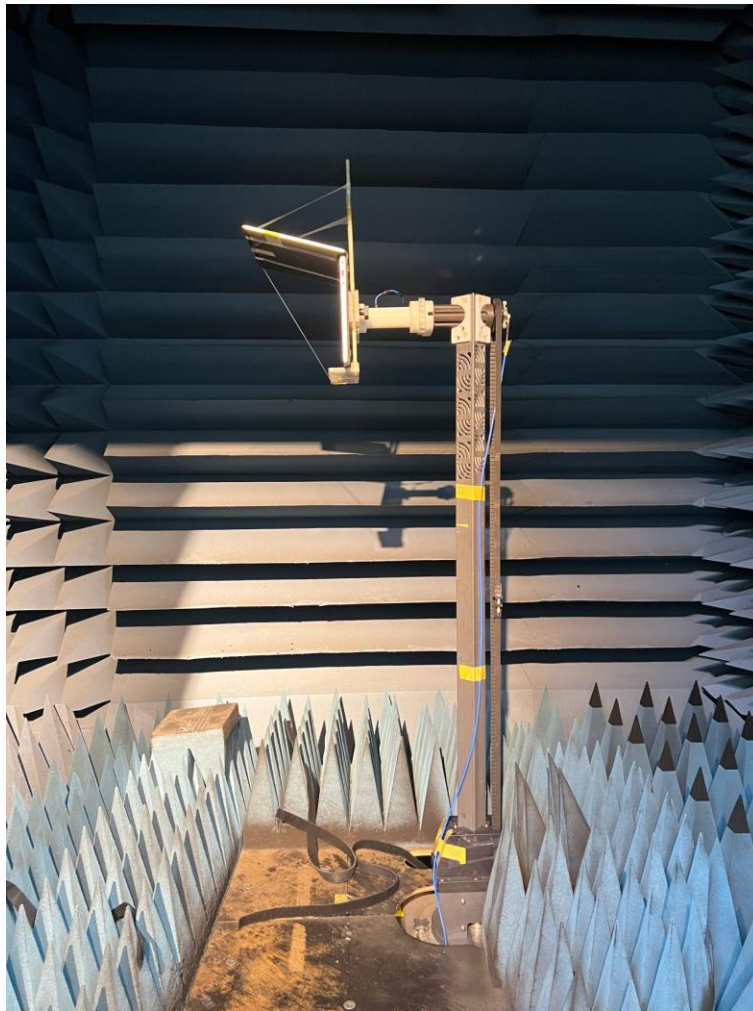


Annex A. Photographs

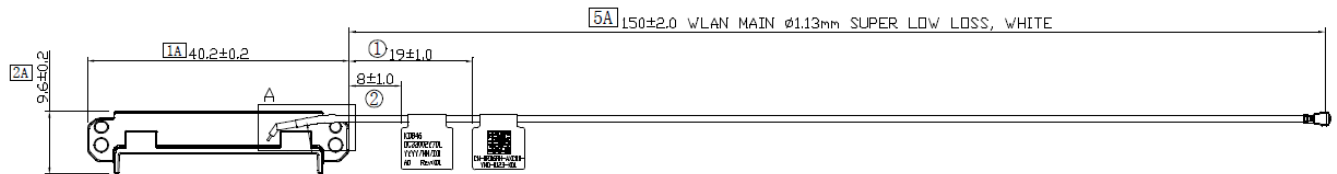
A.1 Setup Photo



A.2 Test sample

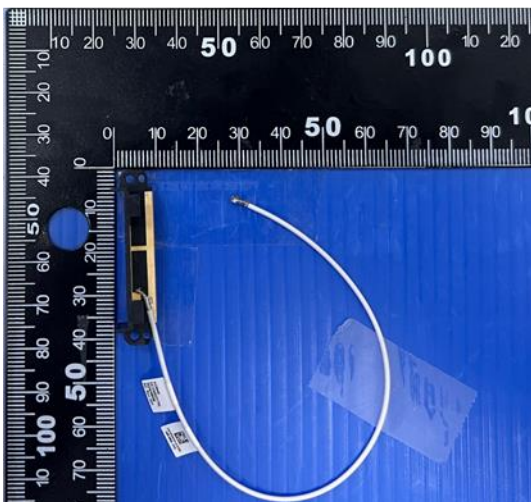
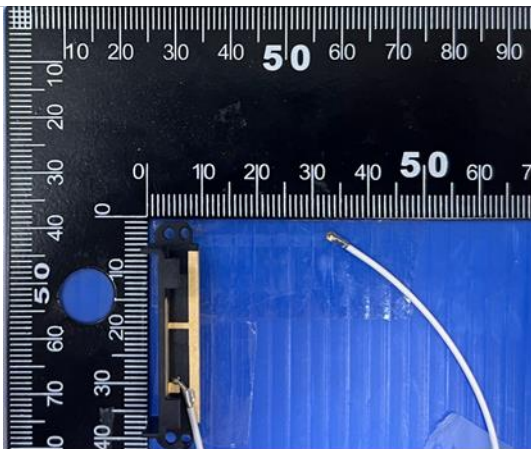
Main Antenna

Antenna Drawing

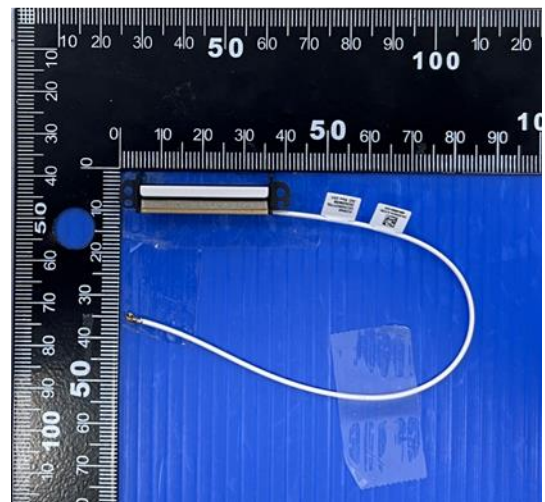


Antenna Photo

Front



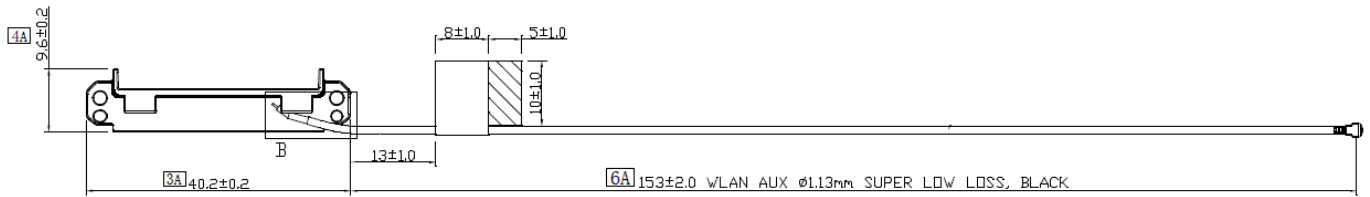
Back



Note: antenna photo should include L type ruler

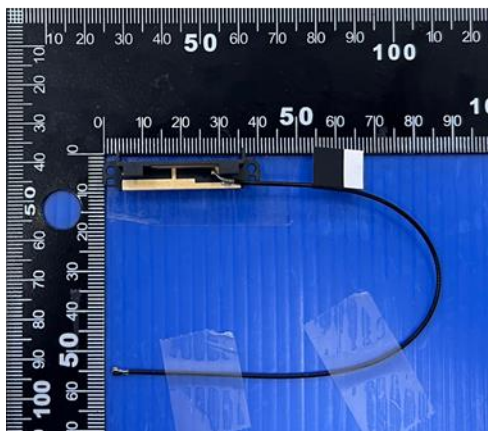
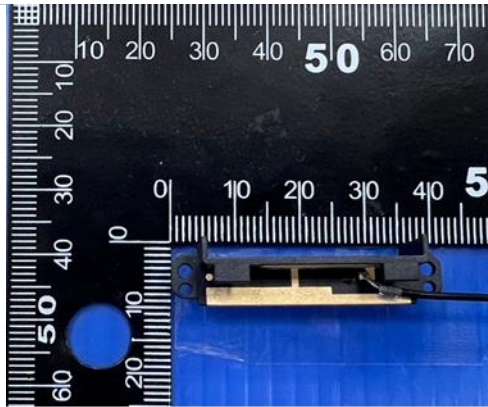
Aux Antenna

Antenna Drawing

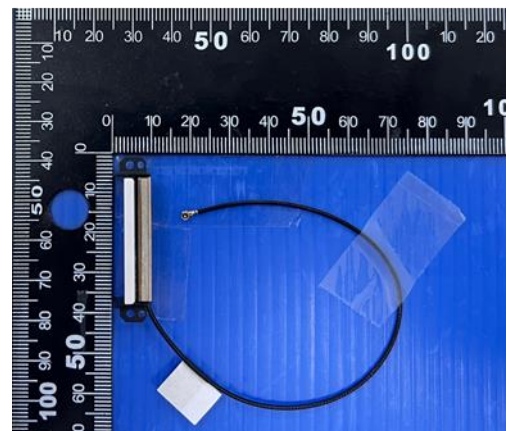
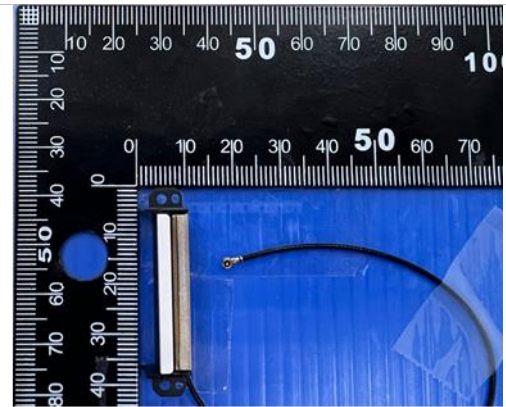


Antenna Photo

Front



Back



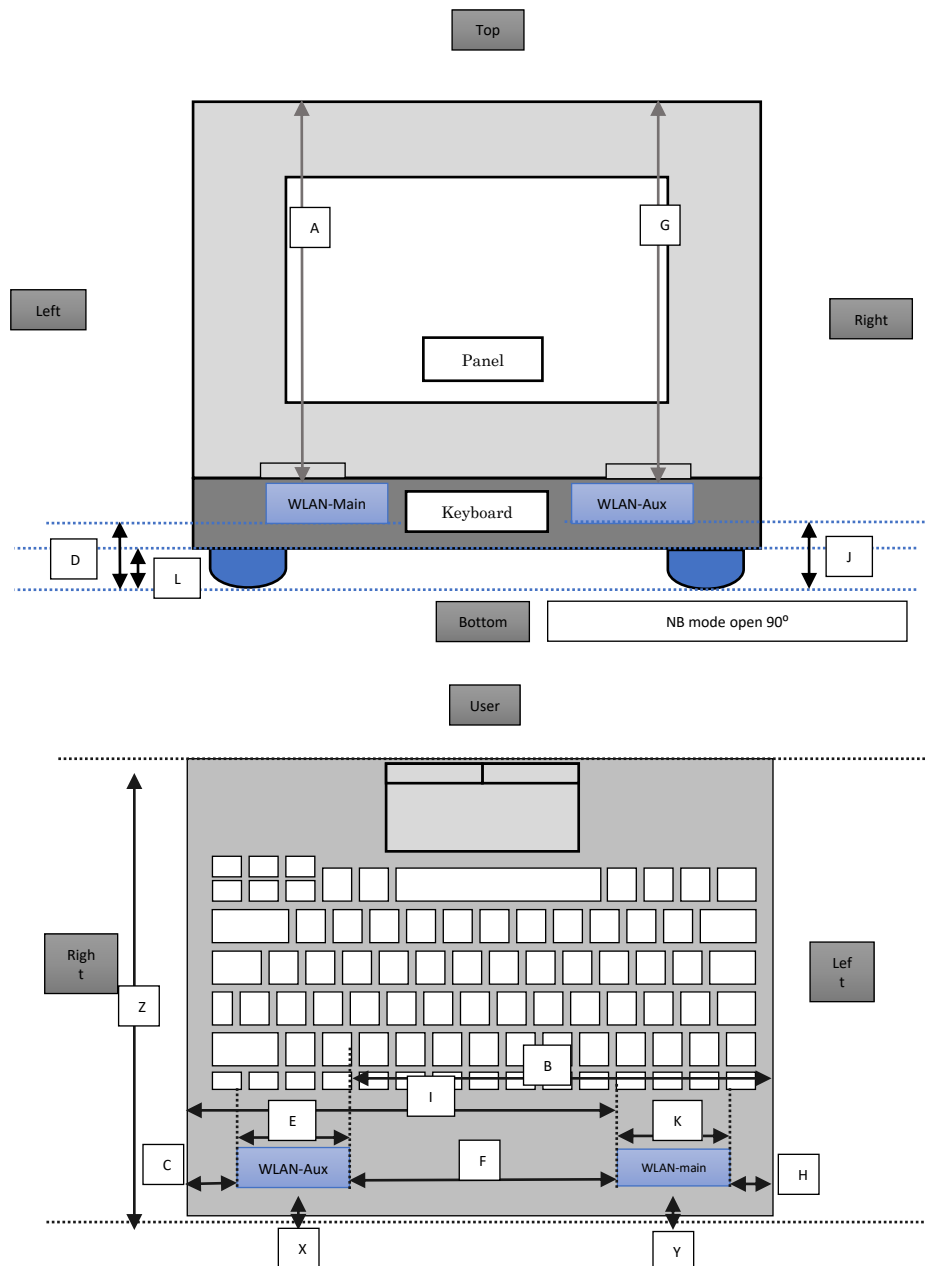
Note: antenna photo should include L type ruler

Annex B. Antenna Location

B.1 Antenna Host Platform Location Information

Include a dimensioned photo(s) or dimensioned drawing(s) of Main and Aux antenna placements (measurements are not required for receive-only antenna).

Any antenna that transmits must show dimensions to bottom of laptop. Provide a description of the materials that are used for supporting or surrounding transmit antennas; for example, non-conductive plastics vs. conductive coating



| Minimum Separation Distance | | | |
|-----------------------------|-----------|---------------------|---------------|
| Item | Antenna | Position | Distance (mm) |
| A | WLAN-Aux | to Top | 214 |
| B | WLAN-Aux | to Left | 250 |
| C | WLAN-Aux | to Right | 20 |
| D | WLAN-Aux | to Bottom | 5 |
| E | WLAN-Aux | Main Antenna Length | 40 |
| F | Main-Aux | Main to Aux | 190 |
| G | WLAN-main | to Top | 214 |
| H | WLAN-main | to Left | 20 |
| I | WLAN-main | to Right | 250 |
| J | WLAN-main | to Bottom | 5 |
| K | WLAN-main | Aux Antenna Length | 40 |
| L | NB | Bumper thickness | 3 |
| X | WLAN-Aux | to hinge | 15 |
| Y | WLAN-Main | to hinge | 15 |
| Z | NB | Keyboard depth | 223 |

B.2 Antenna dimensional information for SAR evaluation

Include a dimensioned photo(s) or dimensioned drawing(s) showing the distance (mm) between the transmit antennas and the user. For notebook/laptop hosts show lapheld position (example below). For tablet hosts show all orientations including lapheld, primary & secondary portrait, primary & secondary landscape positions. Include a description of any proximity sensors or power throttling implementations that limit or exclude use of any host orientation.

Notebook Mode

