

# ANTENNA INFORMATION

OEM	Lenovo	
ODM	Huaqin Technology Co.,Ltd.	
Platform model name	Yoga 7 2-in-1 14ILL10	
Intel platform (ex: Yes, No or NA)	YES	
Platform type (ex: regular NB, convertible PC, AIO...etc)	Convertible PC	
SAR minimum separation (mm)	FCC (1g)	2.65mm
	ISED (1g)	2.65
	ISED (10g)	N/A

Antenna manufacturer	Company name	AWAN
	Address	No.925 Huayuan Road,Zhangpu Town,Kunshan City,Jiangsu Province
Test location	Company name	AWAN
	Address	No.925 Huayuan Road,Zhangpu Town,Kunshan City,Jiangsu Province
Test Personnel	Name(Full name)	Xing.pang
	E-mail	Xing.pang@awan-ant.com
	Tel/Mobile	18842985447
Testing date	2024/9/23	

Antenna Part number	Main	AYL6Y-100053
	Aux	AYL6Y-100052
Antenna type (ex: PIFA, Dipole...etc)	PIFA	

Antenna Peak gain w/ cable loss (dBi)*										
	2.4GHz 2400-2483.5 MHz	5.2GHz 5150-5250MHz	5.3GHz 5250-5350MHz	5.6GHz 5470-5725MHz	5.8GHz 5725-5850MHz	5.9GHz 5850-5895MHz	6.2GHz 5925-6425MHz	6.5GHz 6425-6525MHz	6.7GHz 6525-6875MHz	7.0 GHz 6875-7125MHz
Main	1.70	2.71	2.04	3.09	2.91	1.70	3.15	3.06	3.06	3.08
Aux	2.30	2.97	2.97	3.07	3.07	1.06	3.12	2.95	3.01	2.71

Cable Assembly Part Number and Information					
	Cable PN	Cable length(mm)	Cable diameter(mm)	Impedance(ohm)	Connector type
Main	YCB00113-V000916	277	1.13	50	I-PEX NGFF:20565-001R-13
Aux	YCB00113-V020916	82	1.13	50	I-PEX NGFF:20565-001R-13

\* 3D Antenna Peak Gain required being test in system basis.

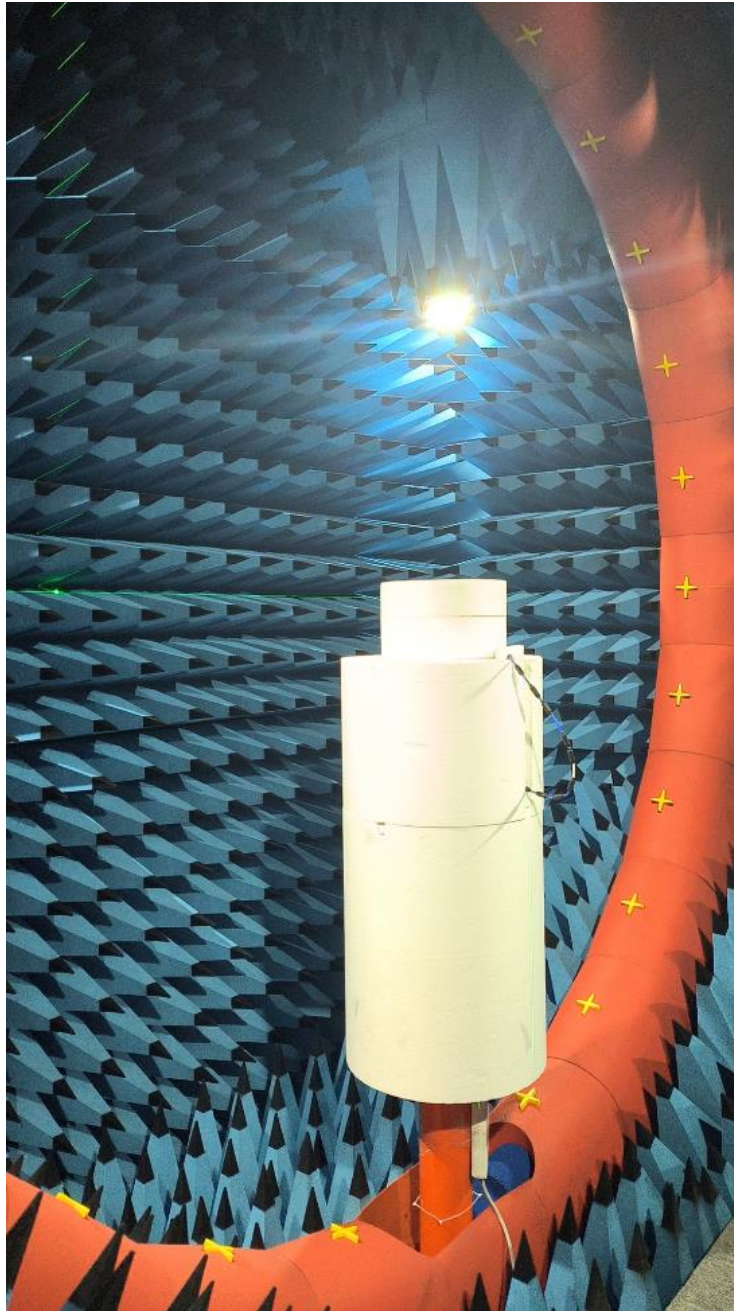
# Table of Contents

Cover page.....	1
<b>Annex A. Photographs</b>	
A.1 Setup Photo.....	3
A.2 Test sample.....	4
<b>Annex B. Antenna Location</b>	
B.1 Antenna Host Platform Location Information.....	8
B.2 Antenna dimensional information for SAR evaluation.....	9

# Annex A. Photographs

---

## A.1 Setup Photo



# A.2 Test sample

## Main Antenna

### Antenna Drawing

AWAN P/N	AYL6Y-100053				Rev.	EC#	Description	Drawn/Date	Checked/Date	Approved/Date	
零件 P/N	02.017.PX0087W-LZ				X1		NEW RELEASE	VC	07/18/24	Jerry	07/18/24
零件 P/N	1W020-E014RN				X2		AWAN,AWAN	VC	09/03/24	Jerry	09/03/24

\*277±2.0(C710-NB7266A-14-Right-MAIN Antenna #1.13 L/L Black cable)

I-PEX 1.13 NGFF, 料號: 20565-001R-13

<p>1.0 標示時請注意事項</p> <p>1.1 未標示公差者以公差表之規範之</p> <p>1.2 * 為重點標柱尺寸</p> <p>2.0 其他需注意事項</p> <p>2.1 外觀表面不可有刮痕, 汗漬及脫漆</p> <p>2.2 有客物質管控: 1 嚴禁過酸雙環漆+ROHS2.0環保標準</p> <p>2.3 單數產品本體和內外箱包裝標識日期需一致</p>	<table border="1" style="width:100%; border-collapse: collapse;"> <tr> <td>6</td> <td></td> <td>1</td> <td>XXX</td> <td>Tube</td> </tr> <tr> <td>5</td> <td>線</td> <td>1</td> <td>XXX</td> <td>Tube</td> </tr> <tr> <td>4</td> <td>管</td> <td>1</td> <td>I-L0015-1800000</td> <td>Tube</td> </tr> <tr> <td>3</td> <td>C710-NB7266-14-Right-MAIN Antenna #1.13 L/L Black cable</td> <td>1</td> <td>XXX</td> <td>Material</td> </tr> <tr> <td>2</td> <td>4.13 Inch Lx 6.35mm Wx 1.13mm H Cable</td> <td>1</td> <td>XXX</td> <td>Cable</td> </tr> <tr> <td>1</td> <td>C710-NB7266A-14-Right-MAIN Antenna #1.13 L/L Black cable</td> <td>1</td> <td>XXX</td> <td>LDS</td> </tr> </table> <table border="1" style="width:100%; border-collapse: collapse;"> <tr> <th>Rev</th> <th>By</th> <th>Date</th> <th>Description</th> </tr> <tr> <td>1</td> <td>Jerry</td> <td>09/03/24</td> <td>Customer Drawing</td> </tr> </table>	6		1	XXX	Tube	5	線	1	XXX	Tube	4	管	1	I-L0015-1800000	Tube	3	C710-NB7266-14-Right-MAIN Antenna #1.13 L/L Black cable	1	XXX	Material	2	4.13 Inch Lx 6.35mm Wx 1.13mm H Cable	1	XXX	Cable	1	C710-NB7266A-14-Right-MAIN Antenna #1.13 L/L Black cable	1	XXX	LDS	Rev	By	Date	Description	1	Jerry	09/03/24	Customer Drawing
6		1	XXX	Tube																																			
5	線	1	XXX	Tube																																			
4	管	1	I-L0015-1800000	Tube																																			
3	C710-NB7266-14-Right-MAIN Antenna #1.13 L/L Black cable	1	XXX	Material																																			
2	4.13 Inch Lx 6.35mm Wx 1.13mm H Cable	1	XXX	Cable																																			
1	C710-NB7266A-14-Right-MAIN Antenna #1.13 L/L Black cable	1	XXX	LDS																																			
Rev	By	Date	Description																																				
1	Jerry	09/03/24	Customer Drawing																																				

HALOGEN FREE

This document and information contained herein are the property of AWAN, copies are issued in strict confidence and shall not be reproduced or copied, or used as the basis of manufacture or sale of apparatus without permission

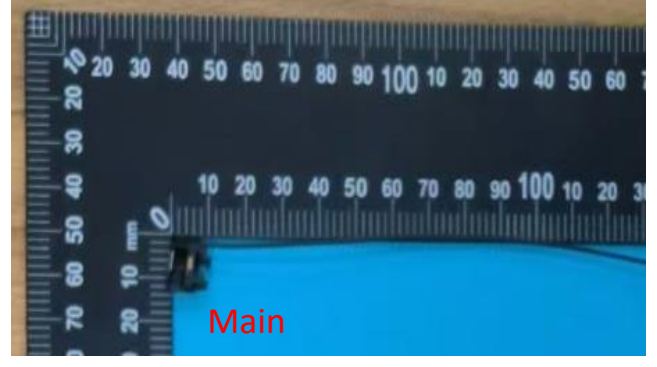
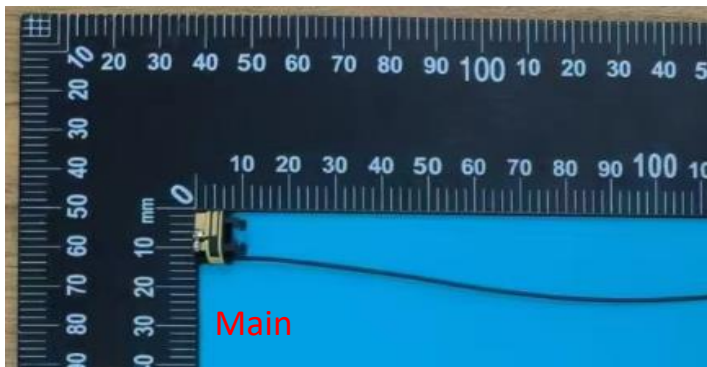
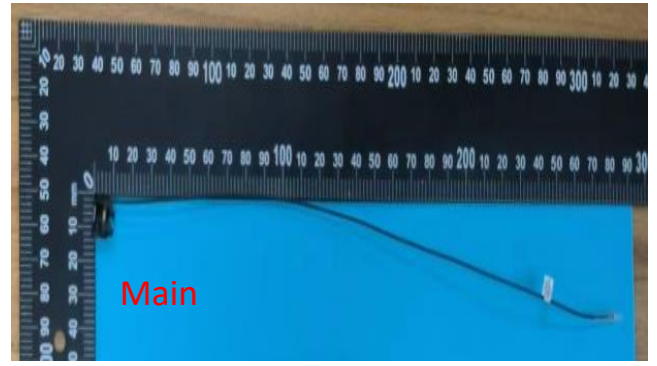
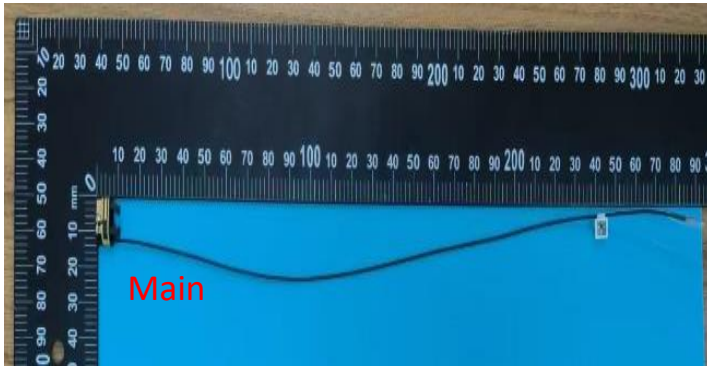
HSF 相關均質分析及測試點選擇參照  
<HSF均質物質分析作業圖示表>

符合AWAN環境管理物質技術標準  
All materials meet the AWAN's spec. Environment - related substances management technical standard.

Antenna Photo

Front

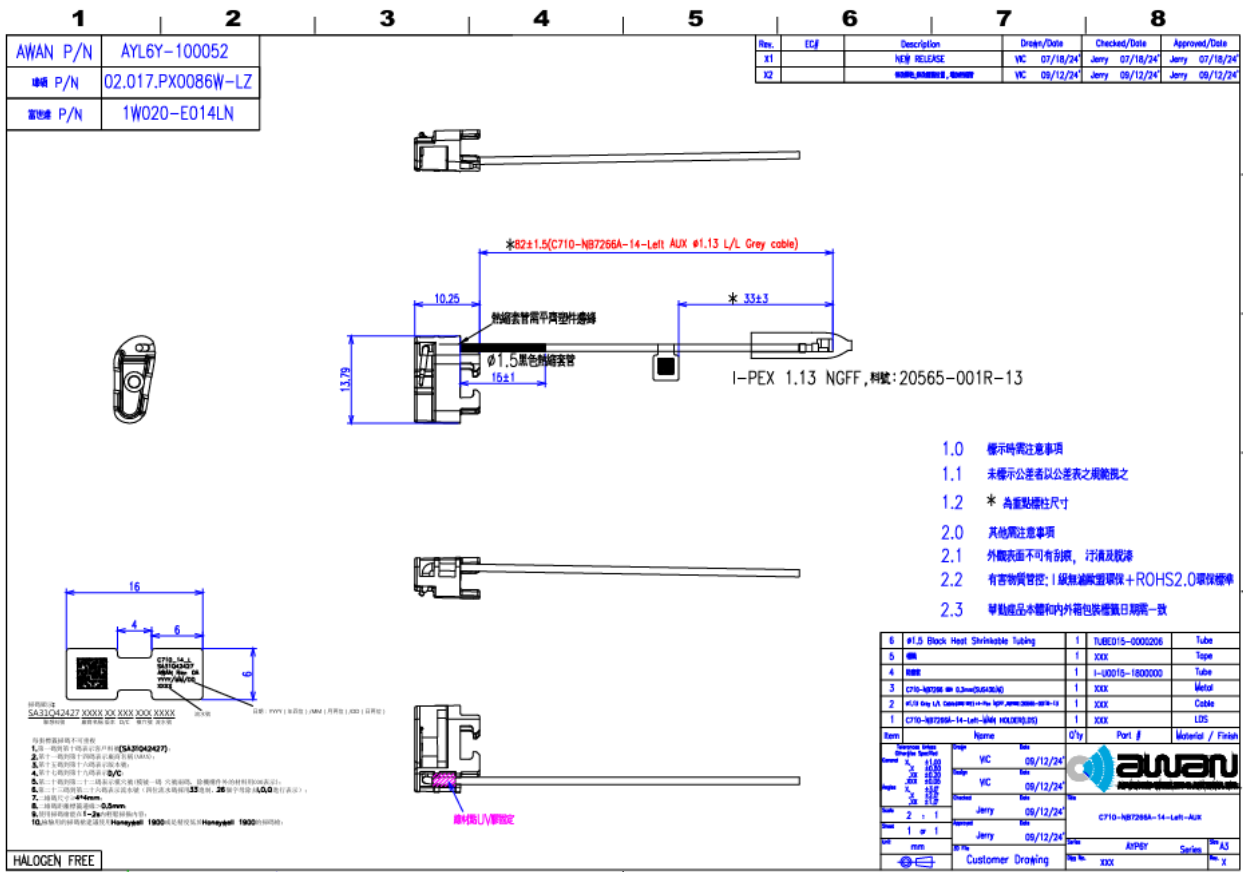
Back



Note: antenna photo should include L type ruler

# Aux Antenna

## Antenna Drawing



**HALOGEN FREE**

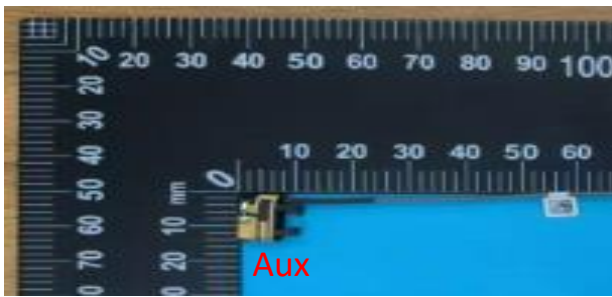
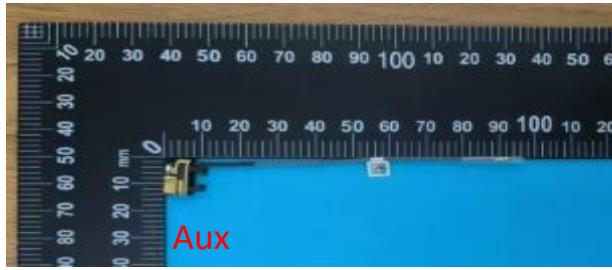
This document and information contained herein are the property of AWAN, copies are issued in strict confidence and shall not be reproduced or copied, or used in the basic of manufacture or sale of apparatus without permission.

HSF 相關物質分析及測試標準參照 <HSF 物質成分作業顯示表>

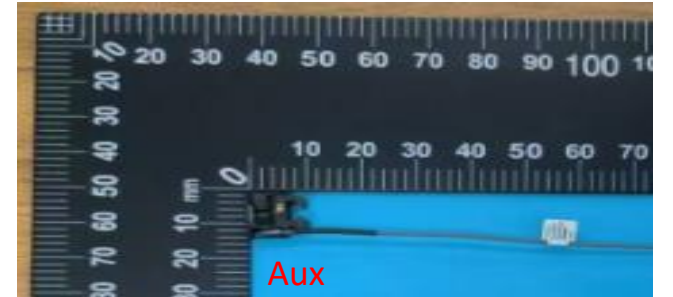
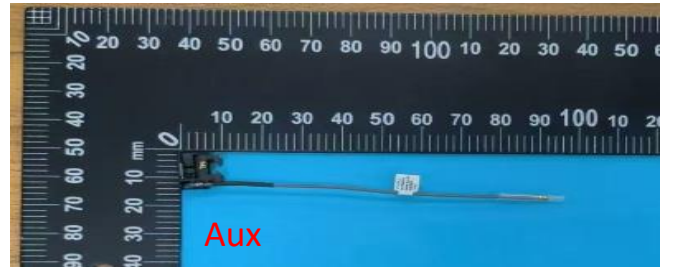
符合AWAN環境管理技術標準  
All materials meet the AWAN's spec. Environment - related substances management technical standard.

Antenna Photo

Front



Back



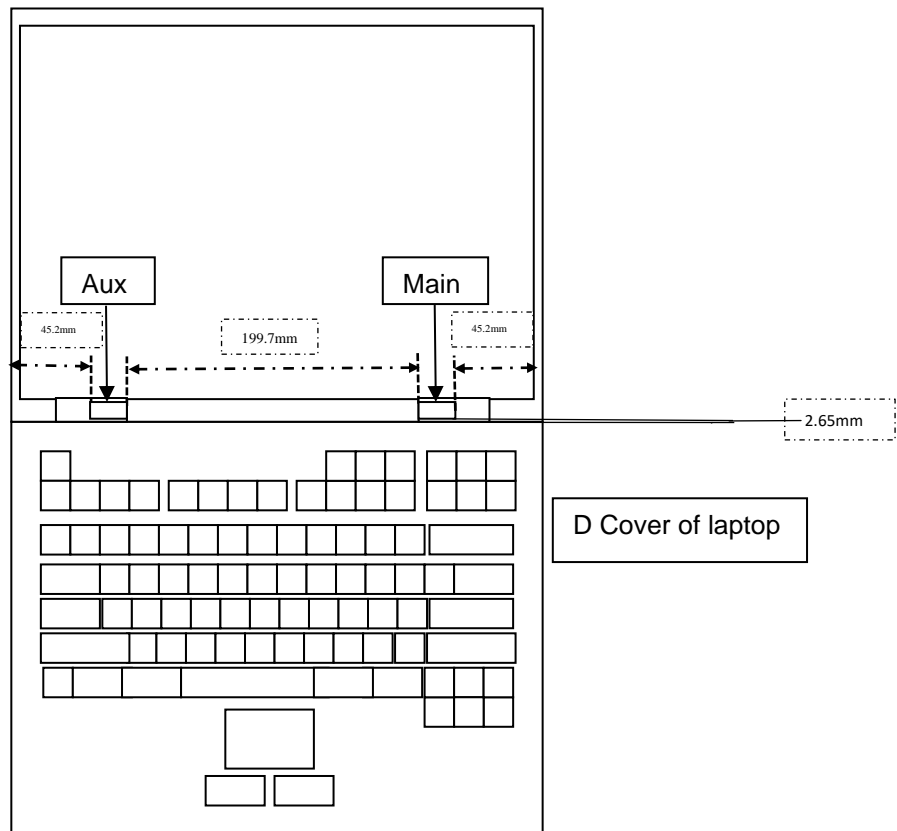
Note: antenna photo should include L type ruler

# Annex B. Antenna Location

## B.1 Antenna Host Platform Location Information

Include a dimensioned photo(s) or dimensioned drawing(s) of Main and Aux antenna placements (measurements are not required for receive-only antenna).

Any antenna that transmits must show dimensions to bottom of laptop. Provide a description of the materials that are used for supporting or surrounding transmit antennas; for example, non-conductive plastics vs. conductive coated plastic or metallic materials.



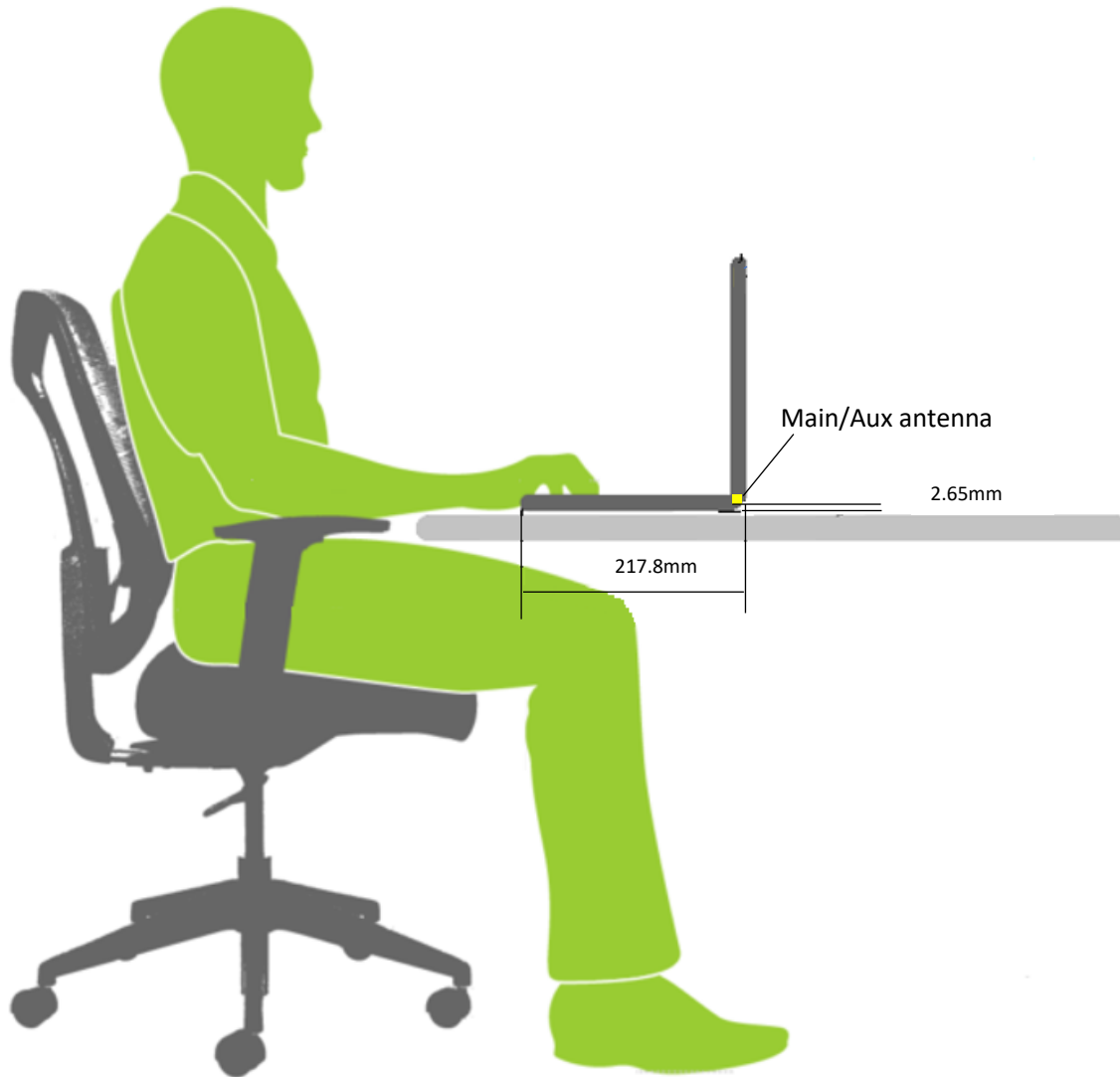
Note: Antenna inside the hinge



## B.2 Antenna dimensional information for SAR evaluation

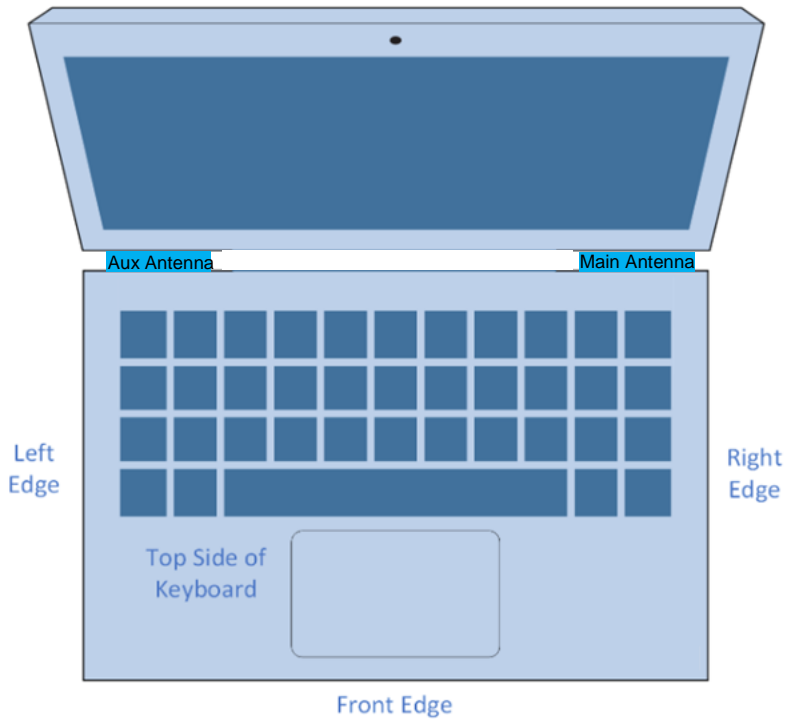
Include a dimensioned photo(s) or dimensioned drawing(s) showing the distance (mm) between the transmit antennas and the user. For notebook/laptop hosts show lapheld position (example below). For tablet hosts show all orientations including lapheld, primary & secondary portrait, primary & secondary landscape positions. Include a description of any proximity sensors or power throttling implementations that limit or exclude use of any host orientation.

### Antennas on the panel section



Measuring Surface	Antenna	Separation Distance(antenna-to- Surface)(mm)	1g SAR
Bottom Side	Main	2.65	FCC/ISED
	Aux	2.65	FCC/ISED

**Antennas on the keyboard section**



Measuring Surface	Antenna	Separation Distance(antenna-to-Surface)(mm)	1g or 10g SAR
Bottom Side	Main	<b>2.65</b>	1g (FCC/ISED)
	Aux	<b>2.65</b>	1g (FCC/ISED)
Front Edge	Main	<b>N/A</b>	1g (ISED)
	Aux	<b>N/A</b>	1g (ISED)
Left Edge	Main	<b>N/A</b>	10g (ISED)
	Aux	<b>N/A</b>	10g (ISED)
Right Edge	Main	<b>N/A</b>	10g (ISED)
	Aux	<b>N/A</b>	10g (ISED)
Top side of Keyboard	Main	<b>N/A</b>	10g (ISED)
	Aux	<b>N/A</b>	10g (ISED)