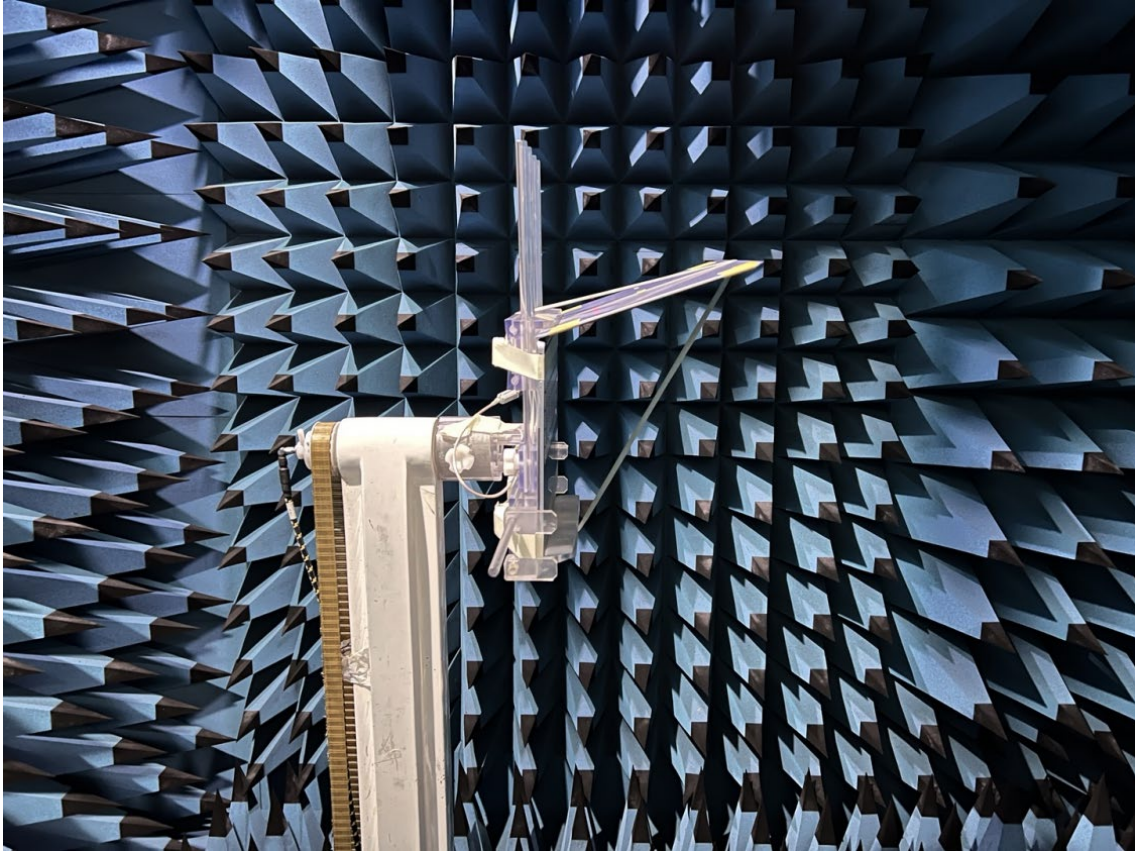


# Annex A. Photographs

---

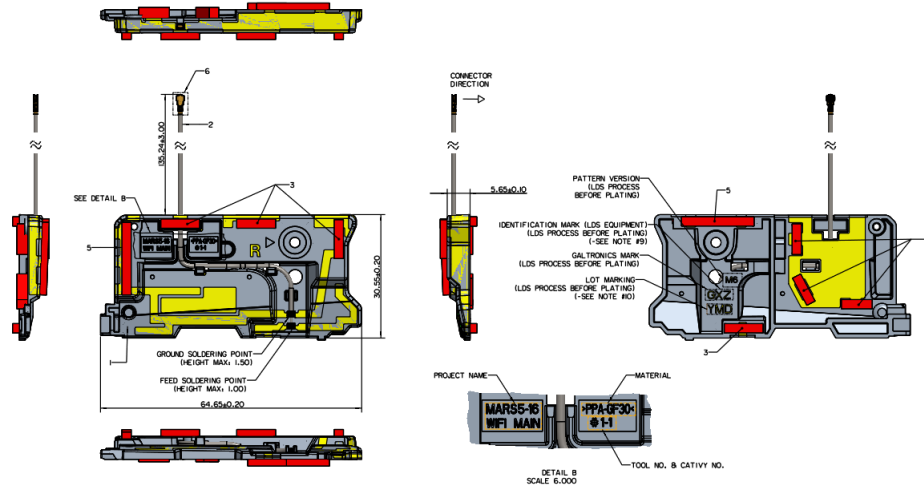
## A.1 Setup Photo



## A.2 Test sample

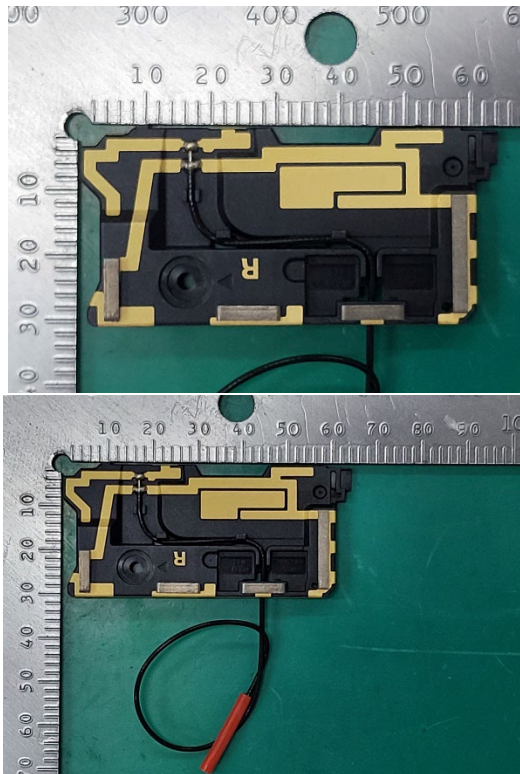
### Main Antenna

#### Antenna Drawing

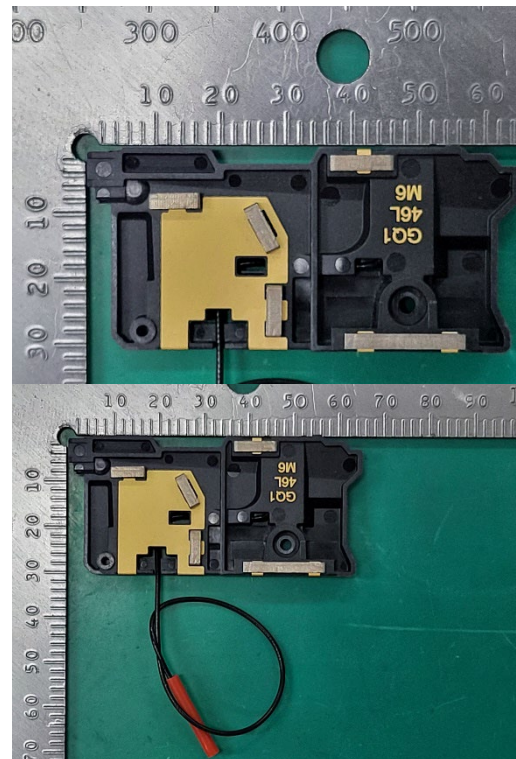


#### Antenna Photo

##### Front



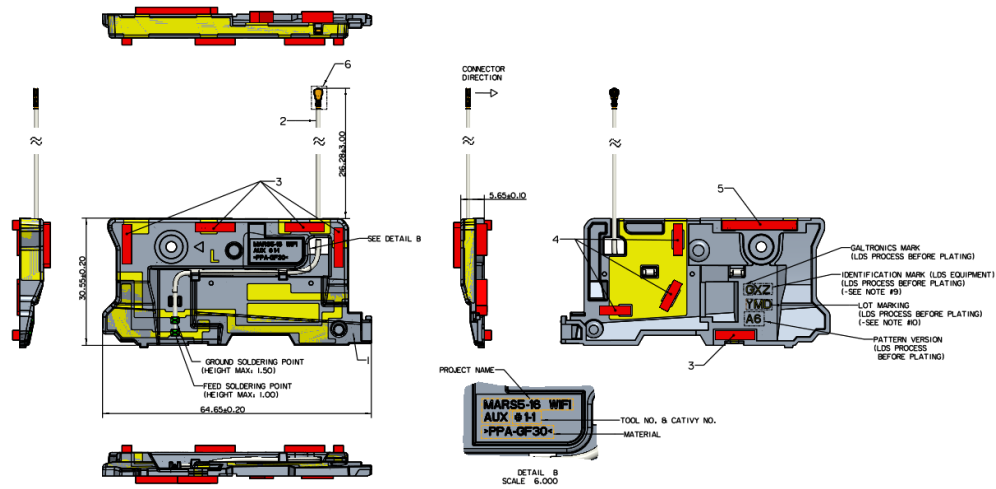
##### Back



Note: antenna photo should include L type ruler

## Aux Antenna

### Antenna Drawing

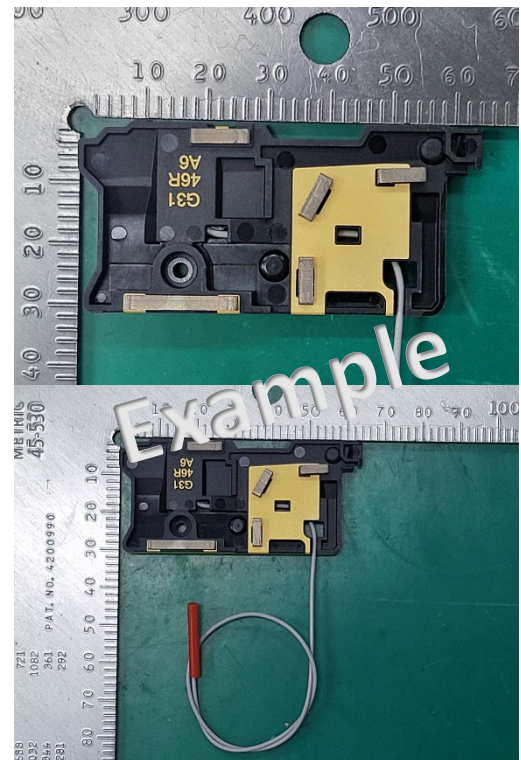


### Antenna Photo

#### Front



#### Back



Note: antenna photo should include L type ruler

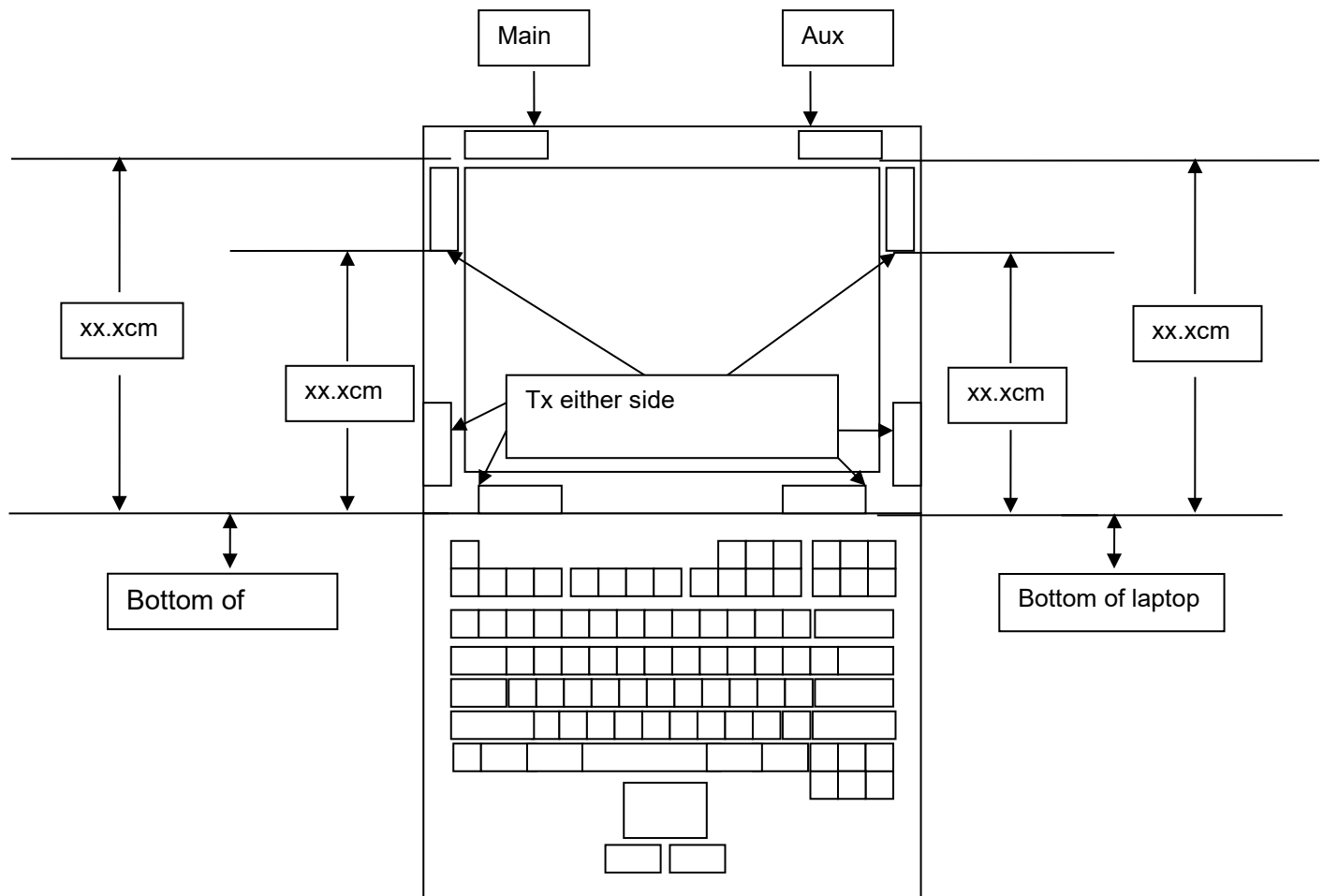


# Annex B. Antenna Location

## B.1 Antenna Host Platform Location Information

Include a dimensioned photo(s) or dimensioned drawing(s) of Main and Aux antenna placements (measurements are not required for receive-only antenna).

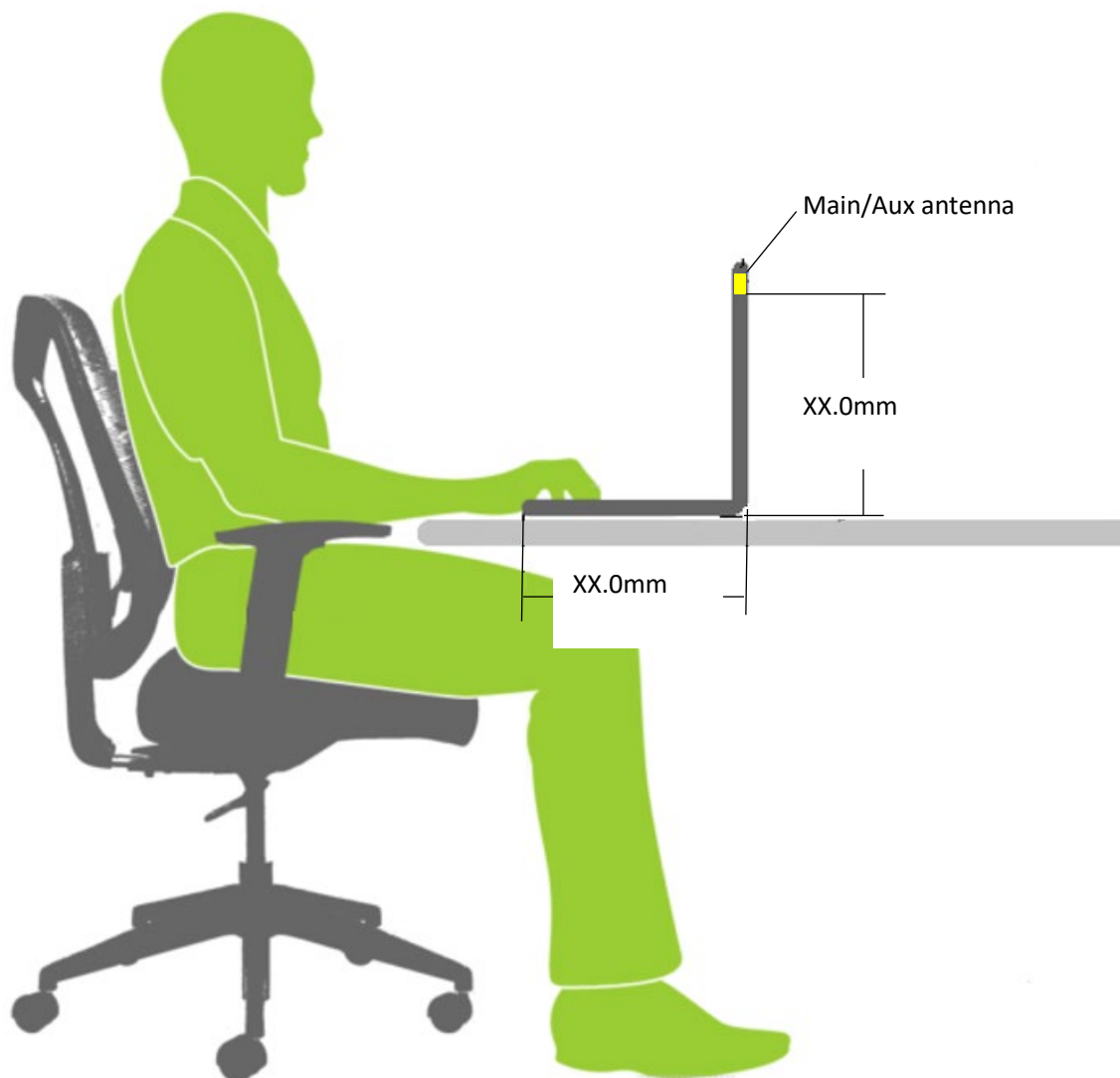
Any antenna that transmits must show dimensions to bottom of laptop. Provide a description of the materials that are used for supporting or surrounding transmit antennas; for example, non-conductive plastics vs. conductive coated plastic or metallic materials.



## B.2 Antenna dimensional information for SAR evaluation

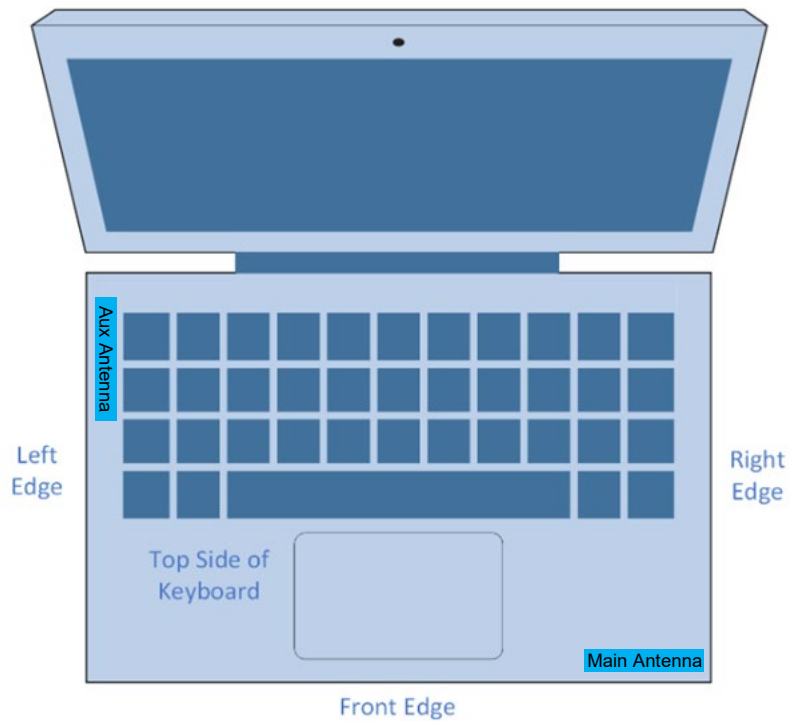
Include a dimensioned photo(s) or dimensioned drawing(s) showing the distance (mm) between the transmit antennas and the user. For notebook/laptop hosts show lapheld position (example below). For tablet hosts show all orientations including lapheld, primary & secondary portrait, primary & secondary landscape positions. Include a description of any proximity sensors or power throttling implementations that limit or exclude use of any host orientation.

### Antennas on the panel section



Measuring Surface	Antenna	Separation Distance(antenna-to- Surface)(mm)	1g SAR
Bottom Side	Main		FCC/ISED
	Aux		FCC/ISED

## Antennas on the keyboard section



Measuring Surface	Antenna	Separation Distance(antenna-to-Surface)(mm)	1g or 10g SAR
Bottom Side	Main		1g (FCC/ISED)
	Aux		1g (FCC/ISED)
Front Edge	Main		1g (ISED)
	Aux		1g (ISED)
Left Edge	Main		10g (ISED)
	Aux		10g (ISED)
Right Edge	Main		10g (ISED)
	Aux		10g (ISED)
Top side of Keyboard	Main		10g (ISED)
	Aux		10g (ISED)