

# Regulatory WLAN Antenna Information

Platform information										
Brand	ODM		RMN		Intel platform <small>(ex: Yes, No or NA)</small>		Platform type <small>(ex: regular NB, convertible PC, AIO...etc)</small>		*SAR minimum separation (mm)	
HP Inc.	Compal		TPN-C174		Yes		Convertible PC		2.4	
*****Please fill in exact product model name and make sure the model name is visible on product cover or any parts for end users recognize for authority inspection.										
Antenna information										
Vendor		Type			Antenna Part number <small>(Main/Tx2)</small>			Antenna Part number <small>(Aux/Tx1)</small>		
Wistron NeWeb Corporation		PIFA			DC33002X710 (81EAB615.G21)			DC33002X700 (81EAB615.G22)		
Peak gain w/ cable loss (dBi)*										
	2.4GHz <small>2400-2483.5 MHz</small>	5.2GHz <small>5150-5250MHz</small>	5.3GHz <small>5250-5350MHz</small>	5.6GHz <small>5470-5725MHz</small>	5.8GHz <small>5725-5850MHz</small>	5.9GHz <small>5850-5895MHz</small>	6.2GHz <small>5925-6425MHz</small>	6.5GHz <small>6425-6525MHz</small>	6.7GHz <small>6525-6875MHz</small>	7.0 GHz <small>6875-7125MHz</small>
Main	2.51	2.68	2.73	2.81	2.54	1.54	2.58	2.58	2.55	1.82
Aux	2.48	2.63	2.43	2.86	2.86	2.79	2.66	2.79	2.71	2.78
Module Information										
Model		Form factor and suffixes								
AX211NGW		Intel Garfield Peak 2 AX211 Wi-Fi 6e +Bluetooth 5.2 M.2 2230 160MHz CNVi WW WLAN								
BE200NGW		Intel Gale Peak 2 BE200 M.2 2230 Wi-Fi 7 +Bluetooth 5.4 non-vPro WW WLAN								

Address of the antenna manufacturer:

NO. 20, PARK AVENUE II , HSINCHU SCIENCE PARK, HSINCHU 30844, TAIWAN

# Table of contents

## 1. Setup photo

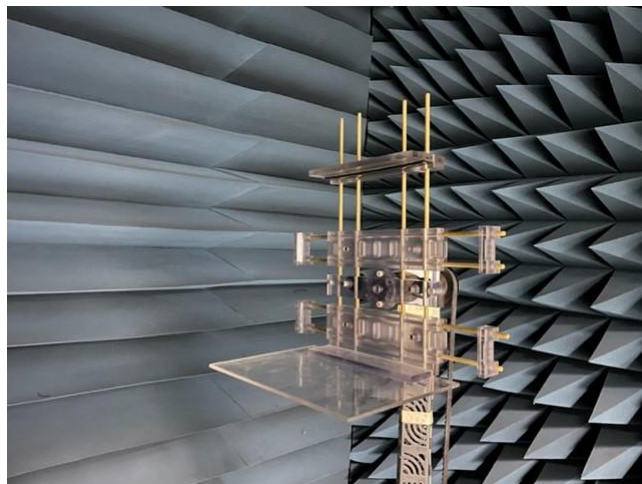
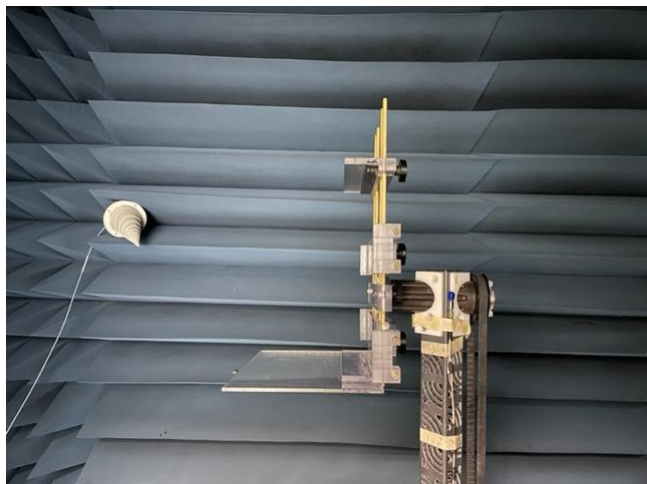
### [Section 1. Dimensioned Photos or Drawings of Antennas](#)

### [Section 2. Antenna Host Platform Location Information](#)

### [Section 3. Antenna dimensional information for SAR evaluation](#)

### [Section 4. Diagram Example of Co-Location Antenna Separation](#)

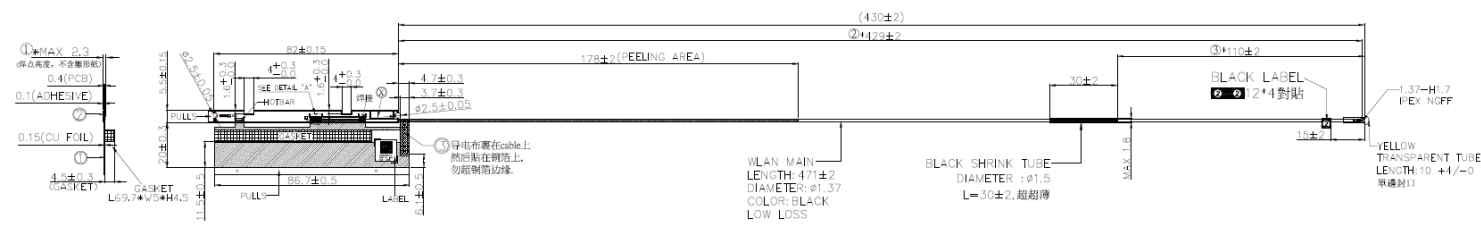
**1. Setup photo**



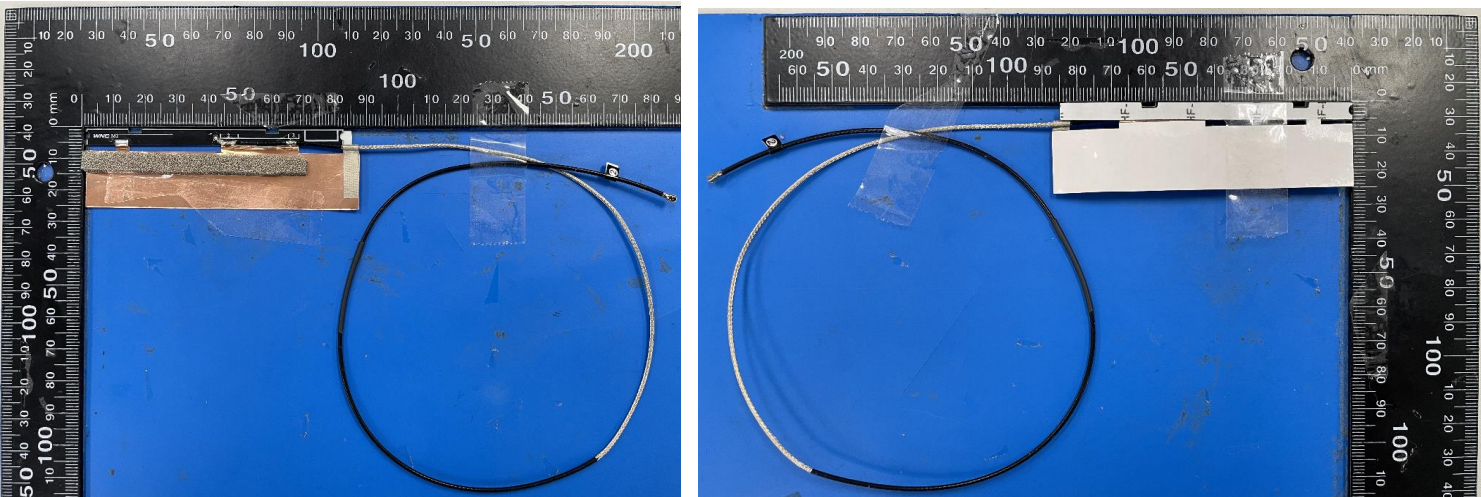
Section 1. Dimensioned Photos and Drawings of Antennas

Include the dimensioned photo and drawing of Main antenna here.

Main Antenna Drawing:



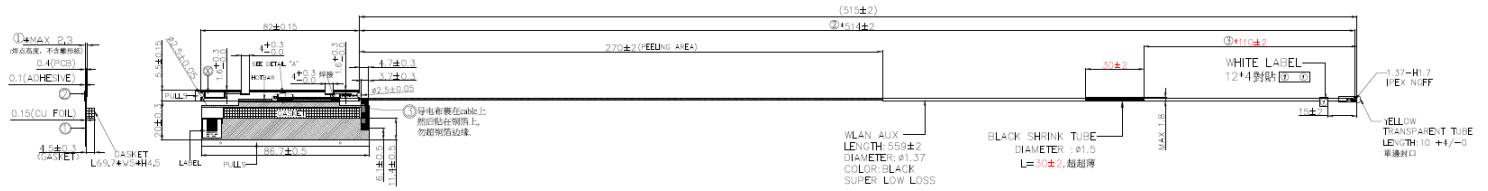
Main Antenna Photo (Front/Back):



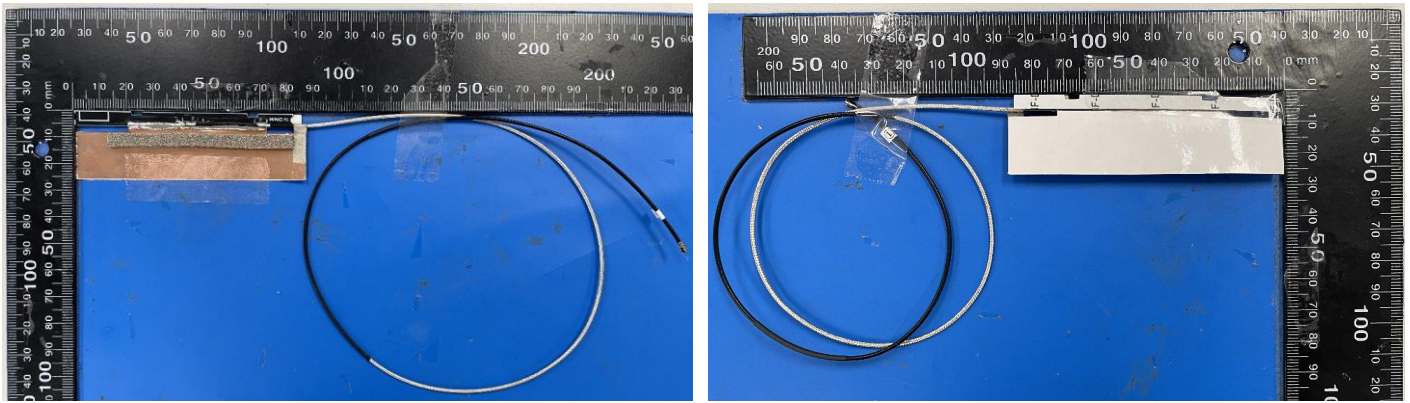
Note: antenna photo should include L type ruler

**Include the dimensioned photo and drawing of Aux antenna here.**

### Aux Antenna Drawing:



### Aux Antenna Photo (Front/Back):

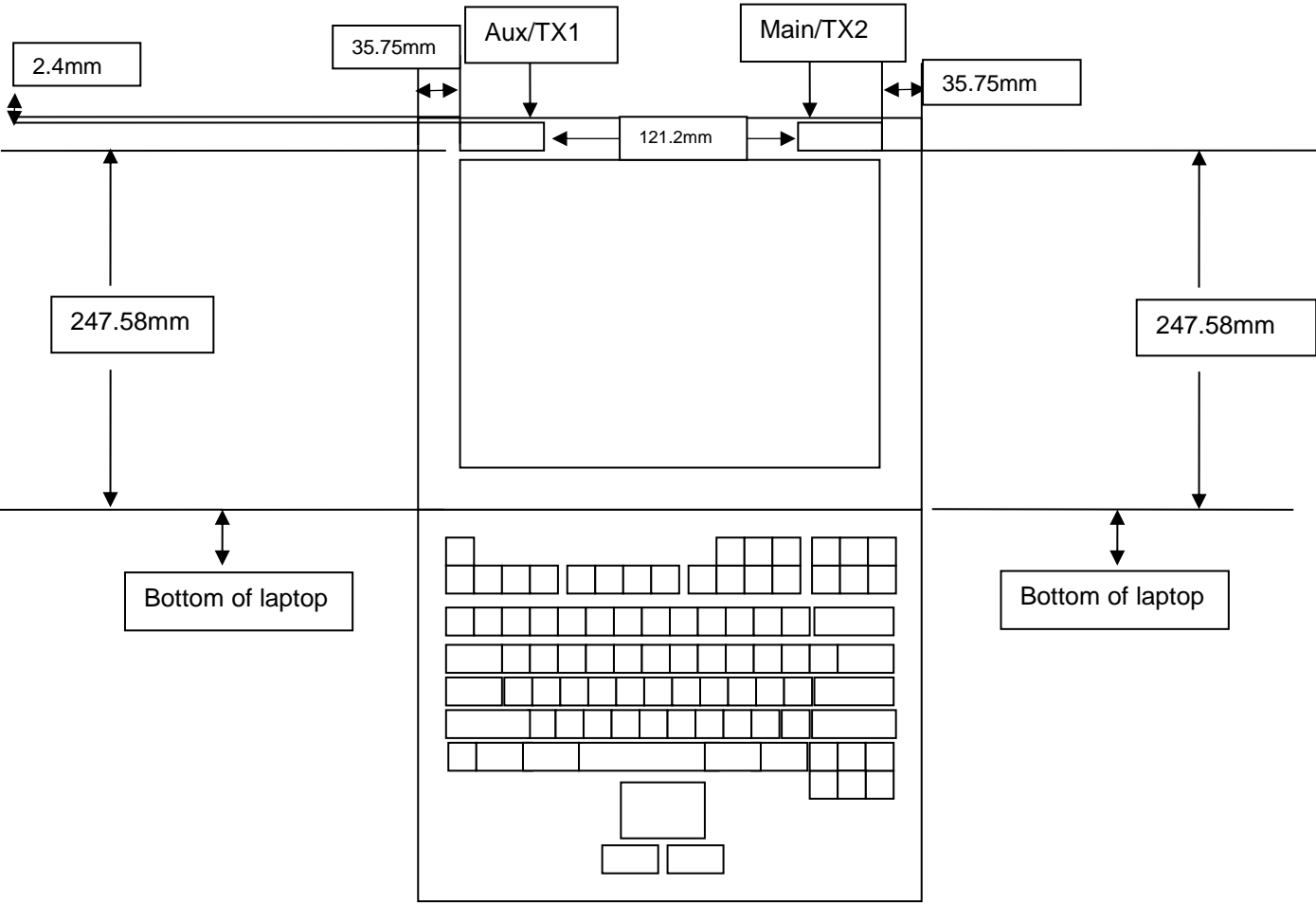


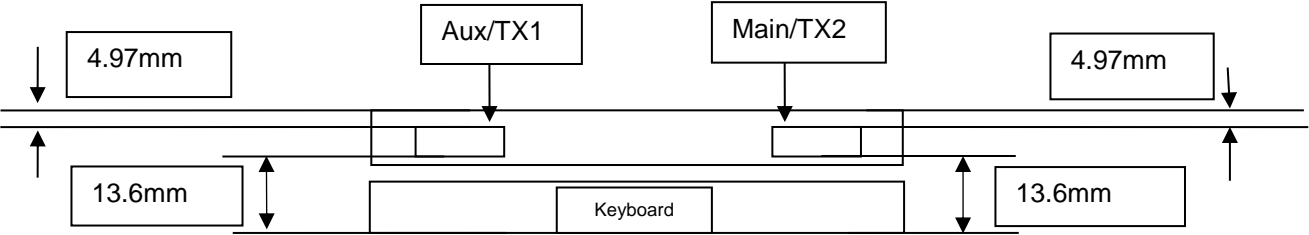
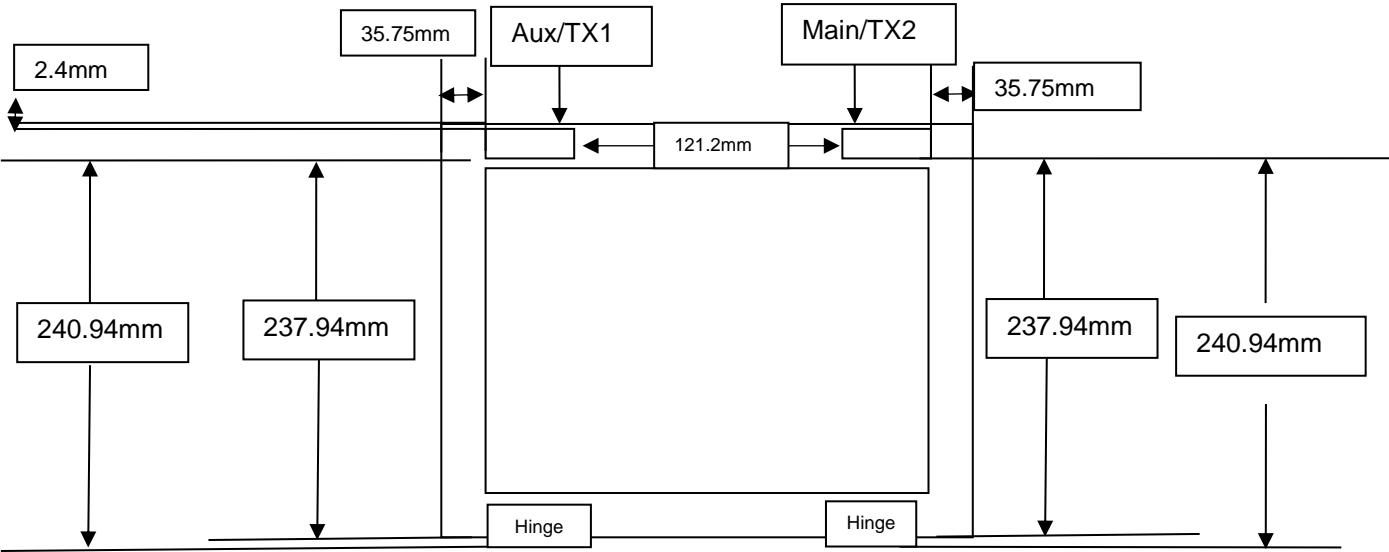
**Note: antenna photo should include L type ruler**

Section 2. Antenna Host Platform Location Information

Include a **dimensioned photo(s) or dimensioned drawing(s)** of Main and Aux antenna placements (measurements are not required for receive-only antenna).

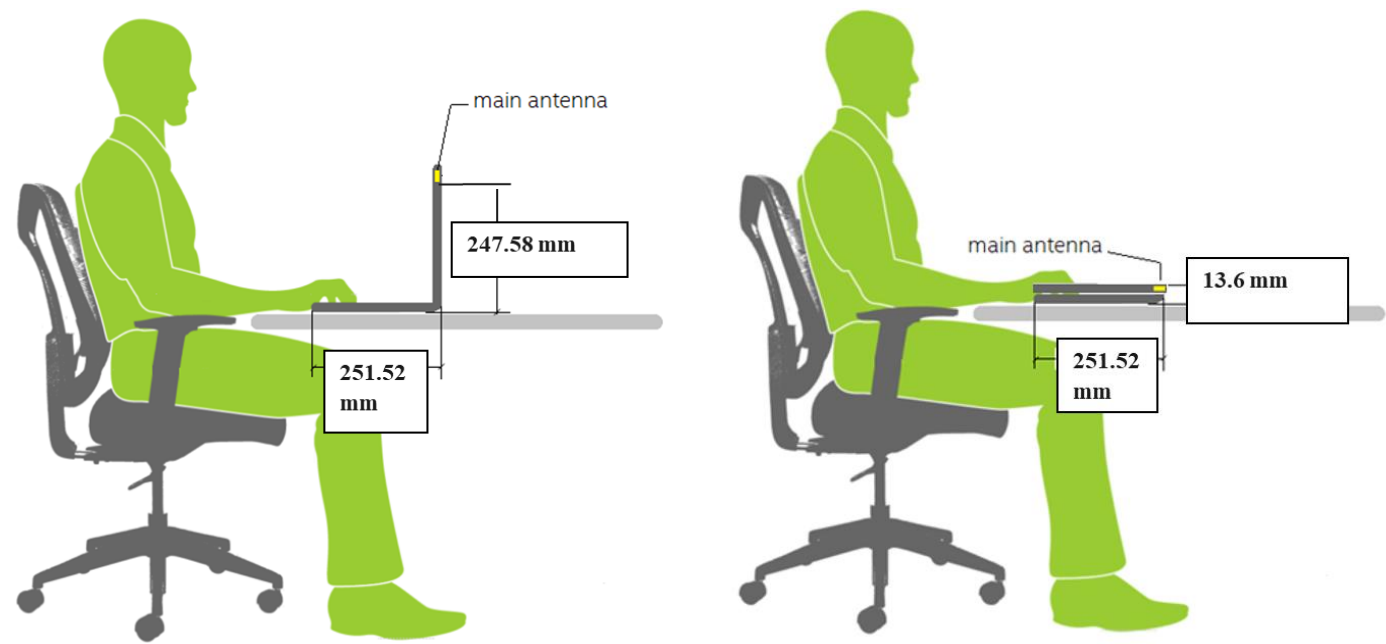
Any antenna that transmits must show dimensions to bottom of laptop. Provide a description of the materials that are used for supporting or surrounding transmit antennas; for example, non-conductive plastics vs. conductive coated plastic or metallic materials.





Section 3. Antenna dimensional information for SAR evaluation

Include a **dimensioned photo(s) or dimensioned drawing(s)** showing the distance (mm) between the transmit antennas and the user. For notebook/laptop hosts show lapheld position (example below). For tablet hosts show all orientations including lapheld, primary & secondary portrait, primary & secondary landscape positions. Include a description of any proximity sensors or power throttling implementations that limit or exclude use of any host orientation.





Section 4. Diagram Example of Co-Location Antenna Separation

Include a **dimensioned photo or dimensioned drawing** showing the distance (mm) between all WLAN transmit antennas and other co-located radiator transmit antenna such as Bluetooth, WWAN,..

(Note: Due to the evolving rules regarding co-location, each platform will need to be reviewed on a case by case basis)

