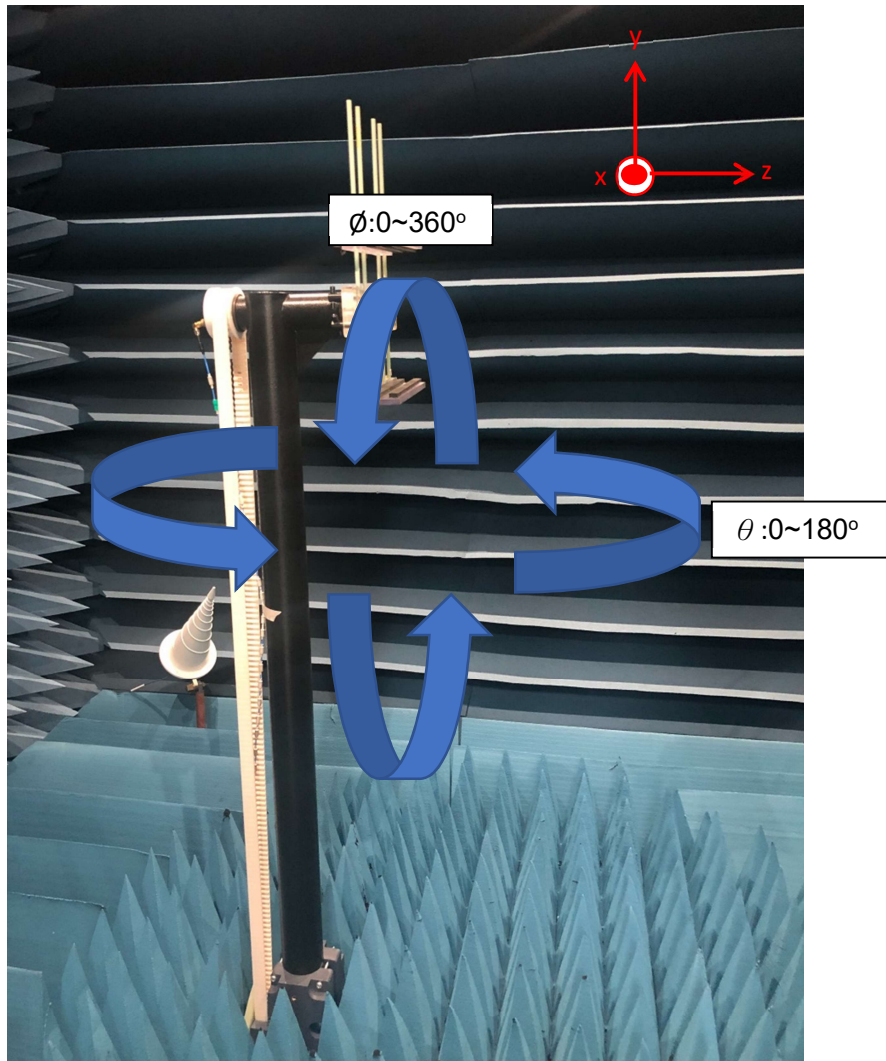


# Table of Contents

|   |          |
|---|----------|
| <b>Cover page</b> .....                                     | <b>1</b> |
| <b>Annex A. Photographs</b>                                 |          |
| A.1 Setup Photo.....  | 2        |
| A.2 Test sample.....  | 3        |
| <b>Annex B. Antenna Location</b>                            |          |
| B.1 Antenna Host Platform Location Information.....         | 5        |
| B.2 Antenna dimensional information for SAR evaluation..... | 6        |

# Annex A. Photographs

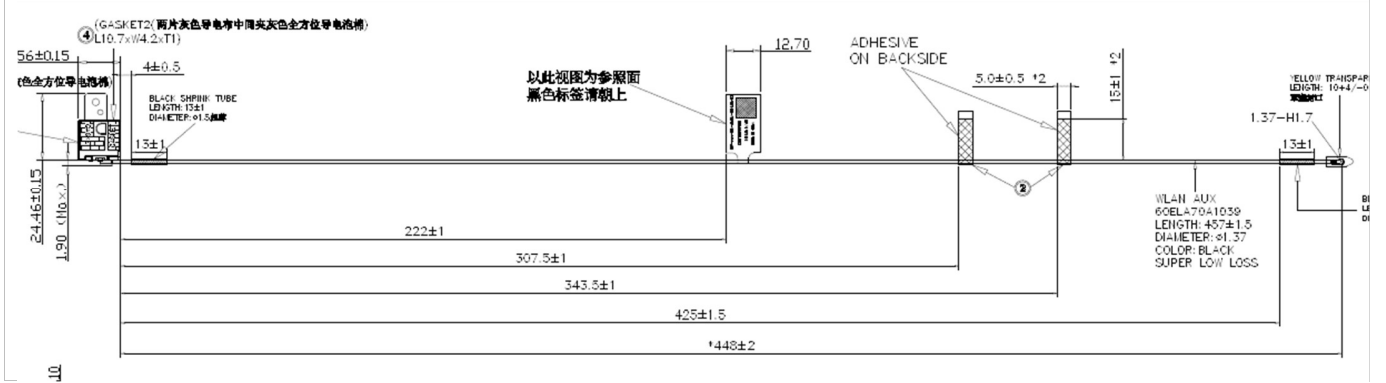
## A.1 Setup Photo





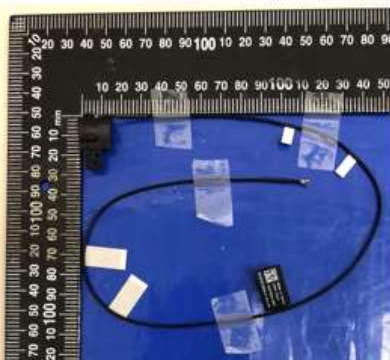
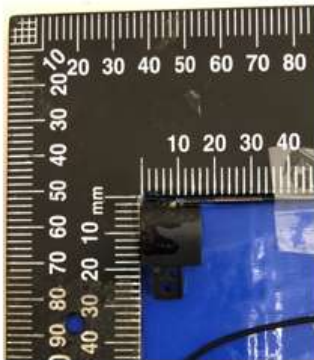
## Aux Antenna

### Antenna Drawing

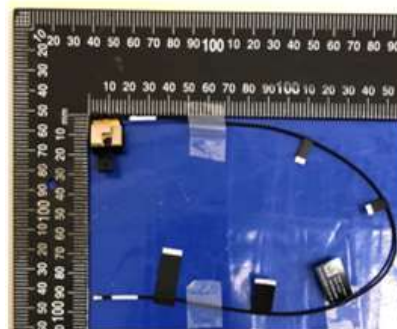
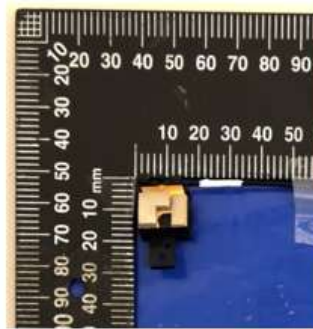


### Antenna Photo

Front



Back



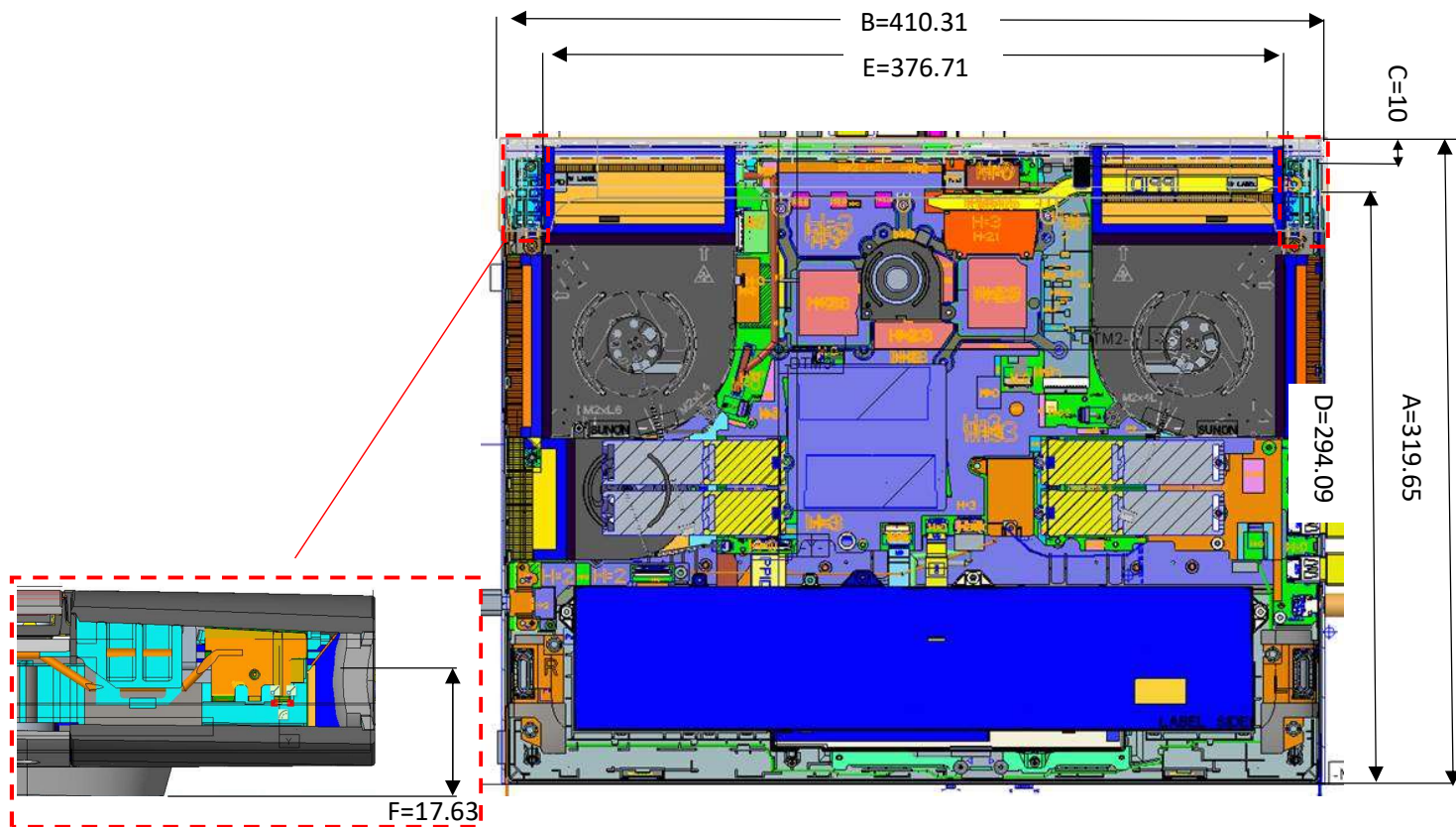
Note: antenna photo should include L type ruler

# Annex B. Antenna Location

## B.1 Antenna Host Platform Location Information

Include a **dimensioned photo(s) or dimensioned drawing(s)** of Main and Aux antenna placements (measurements are not required for receive-only antenna).

Any antenna that transmits must show dimensions to bottom of laptop. Provide a description of the materials that are used for supporting or surrounding transmit antennas; for example, non-conductive plastics vs. conductive coated plastic or metallic materials.



| Item | Location                              | Distance(mm) |
|------|---------------------------------------|--------------|
| A    | System Y                              | 319.65       |
| B    | System X                              | 410.31       |
| C    | Antenna to edge                       | 10           |
| D    | Antenna to edge                       | 294.09       |
| E    | WLAN-Main-Antenna to WLAN-Aux-Antenna | 376.71       |
| F    | Antenna to table                      | 17.63        |

## B.2 Antenna dimensional information for SAR evaluation

Include a **dimensioned photo(s) or dimensioned drawing(s)** showing the distance (mm) between the transmit antennas and the user. For notebook/laptop hosts show lapheld position (example below). For tablet hosts show all orientations including lapheld, primary & secondary portrait, primary & secondary landscape positions. Include a description of any proximity sensors or power throttling implementations that limit or exclude use of any host orientation.

