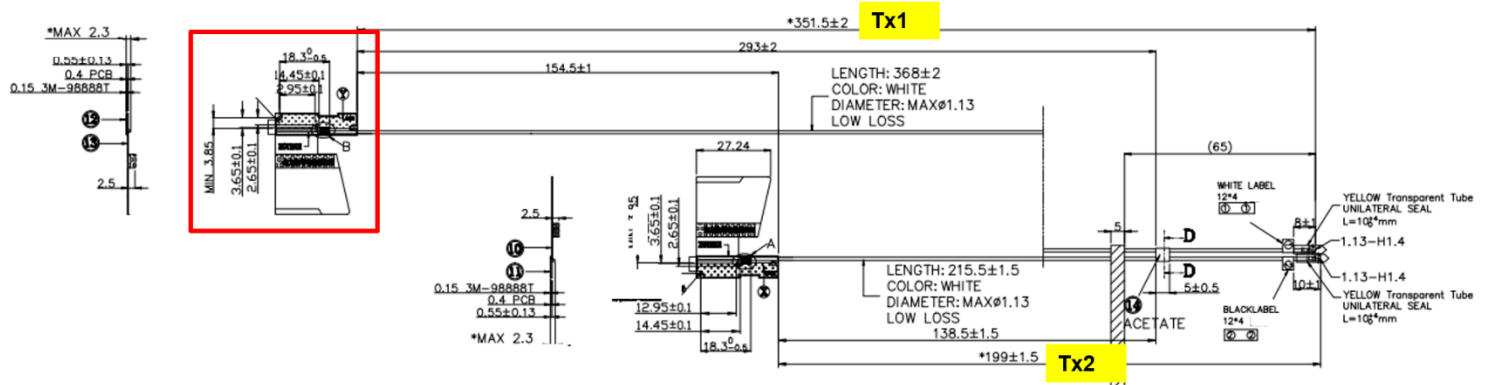


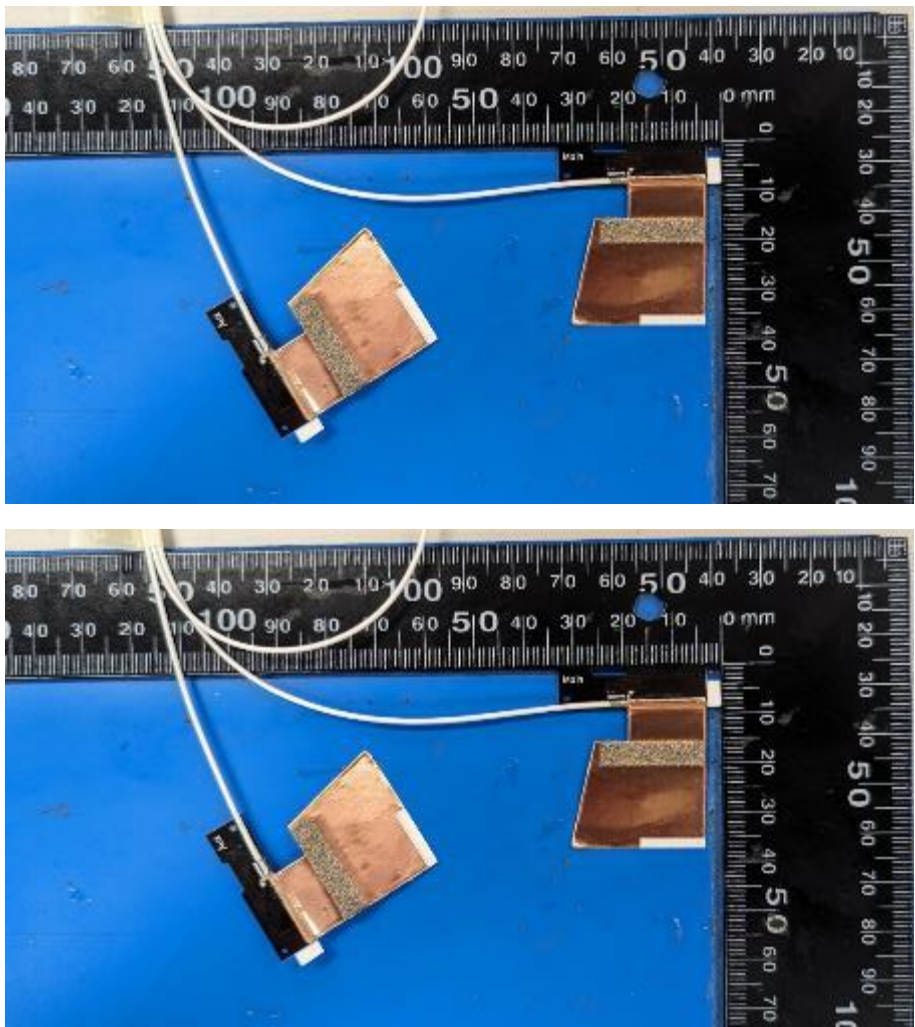
3. Setup photo



Tx1 Antenna Drawing:

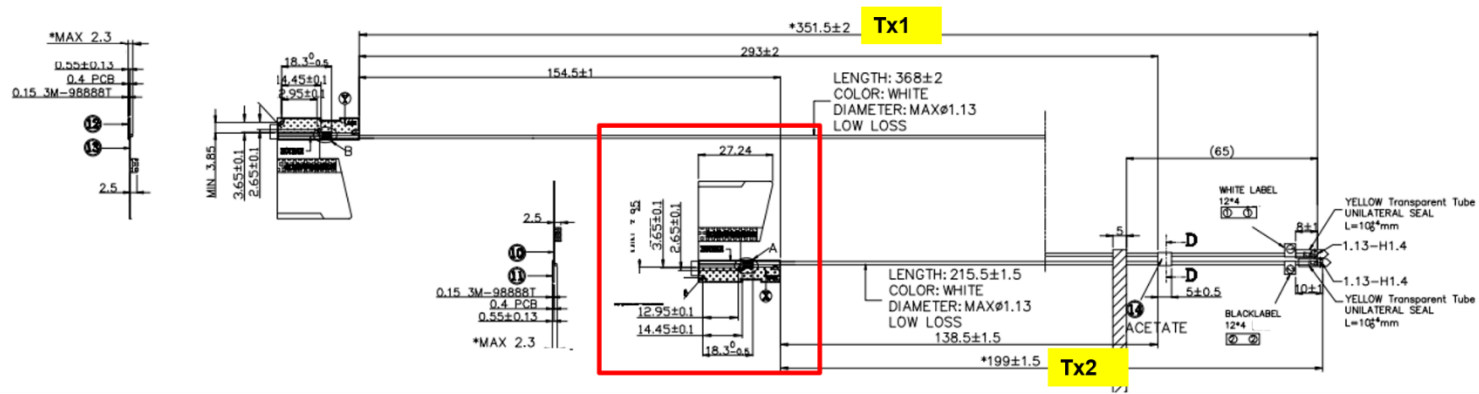


Tx1 Antenna Photo (Front/Back):

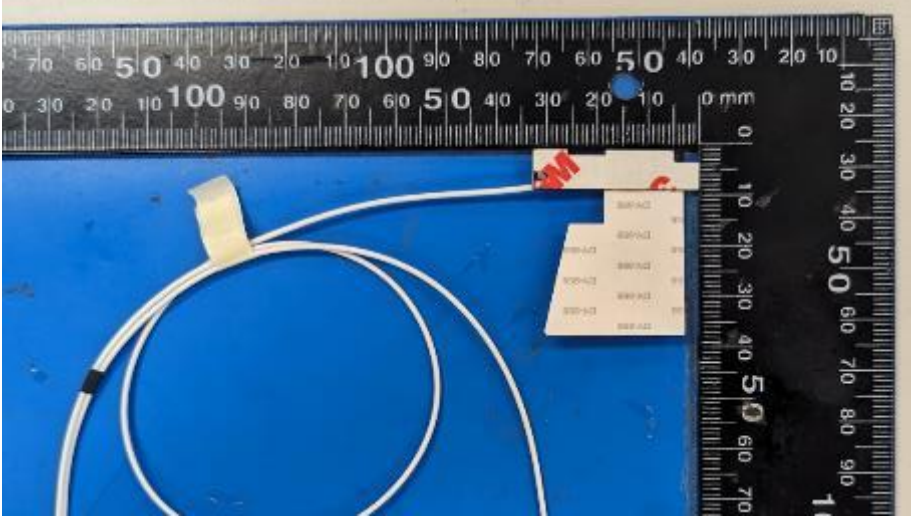
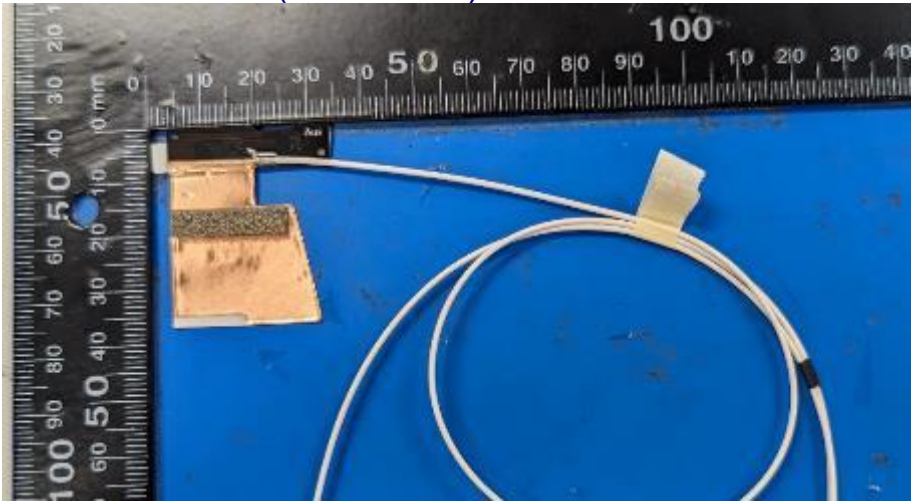


Include the dimensioned photo and drawing of Ant2 antenna here.

Tx2 Antenna Drawing:



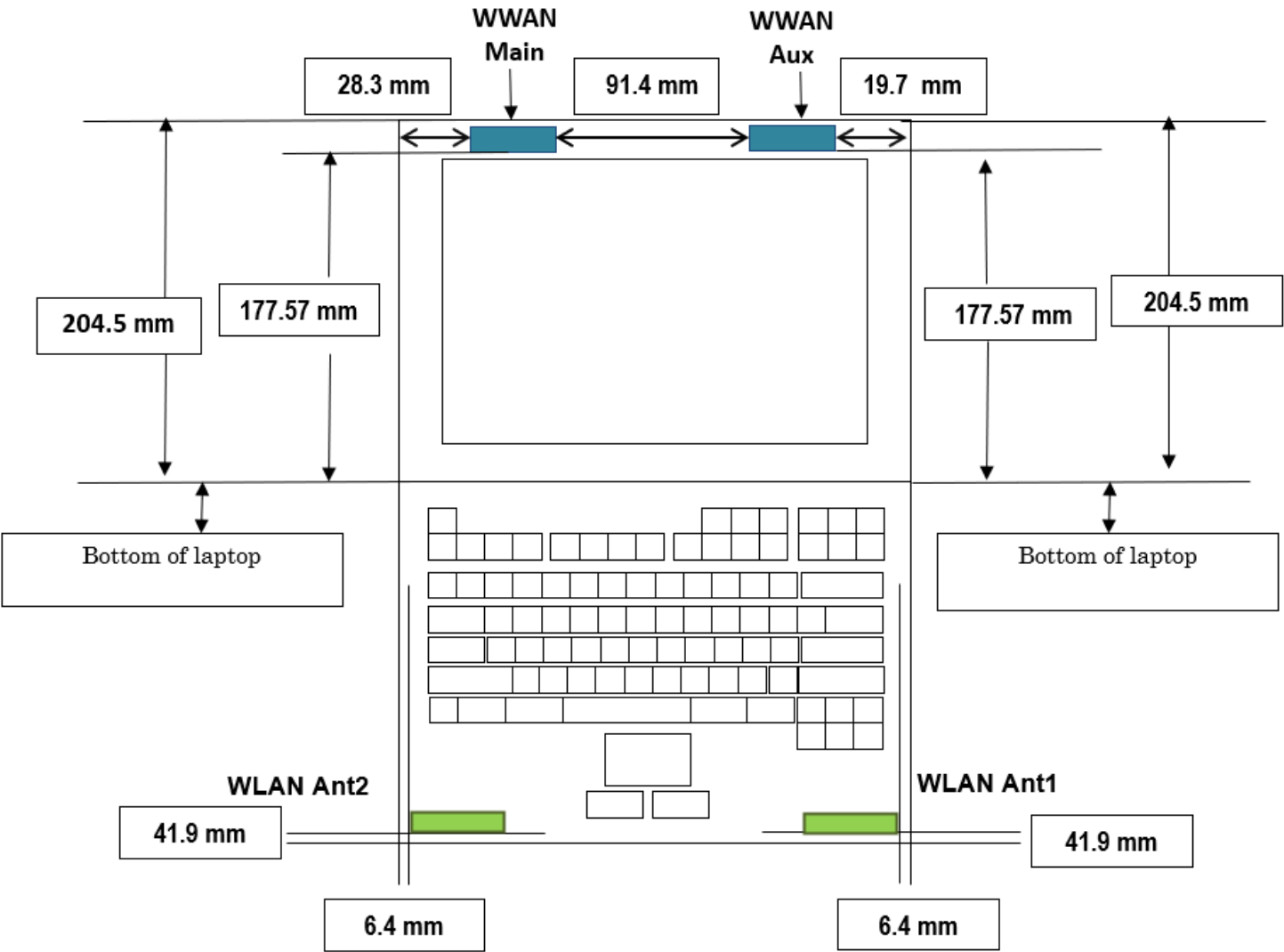
TX2 Antenna Photo (Front/Back):



Section 4. Antenna Host Platform Location Information

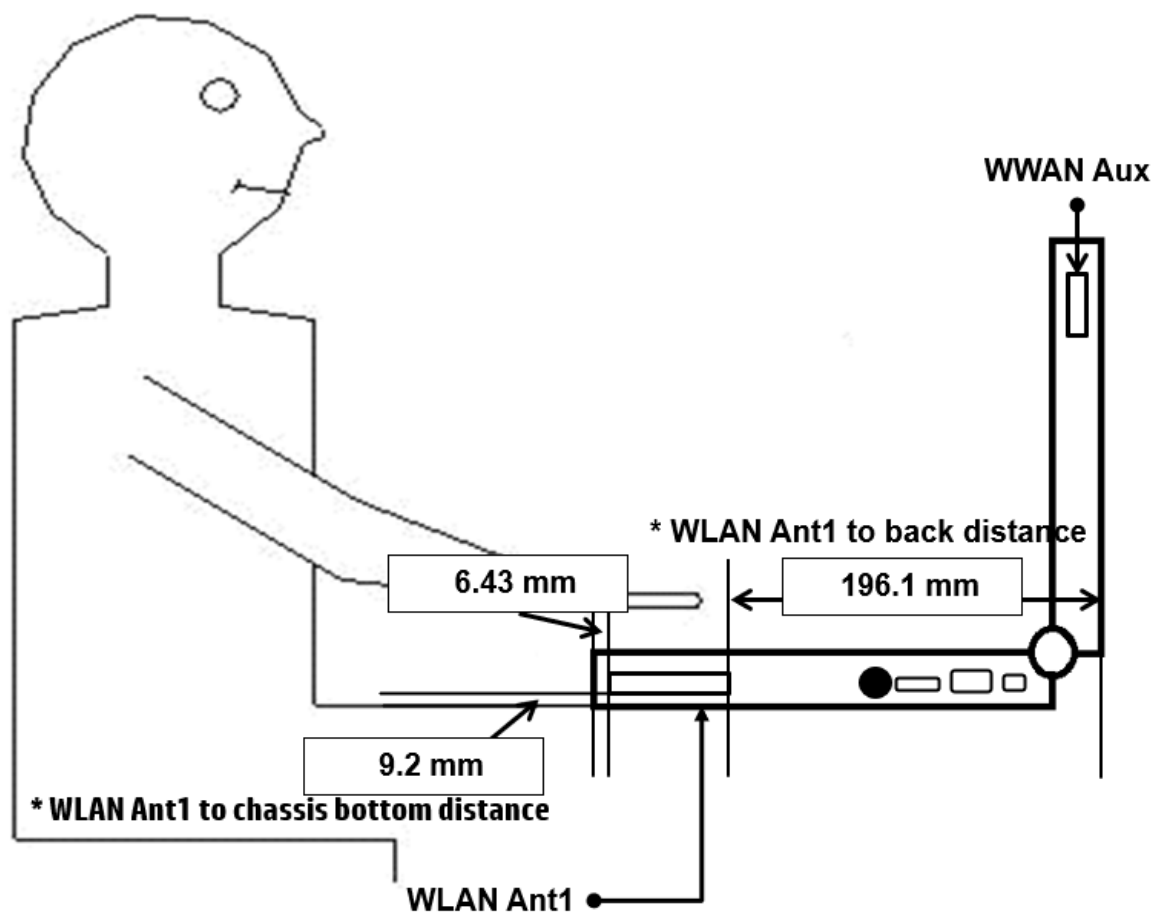
Include a **dimensioned photo(s) or dimensioned drawing(s)** of Ant2 and Ant1 antenna placements (measurements are not required for receive-only antenna).

Any antenna that transmits must show dimensions to bottom of laptop. Provide a description of the materials that are used for supporting or surrounding transmit antennas; for example, non-conductive plastics vs. conductive coated plastic or metallic materials.



Section 5. Antenna dimensional information for SAR evaluation

Include a **dimensioned photo(s) or dimensioned drawing(s)** showing the distance (mm) between the transmit antennas and the user. For notebook/laptop hosts show lapheld position (example below). For tablet hosts show all orientations including lapheld, primary & secondary portrait, primary & secondary landscape positions. Include a description of any proximity sensors or power throttling implementations that limit or exclude use of any host orientation.



Section 6. Diagram Example of Co-Location Antenna Separation

Include a **dimensioned photo or dimensioned drawing** showing the distance (mm) between all WLAN transmit antennas and other co-located radiator transmit antenna such as Bluetooth, WWAN,..

