

Lenovo 14e Chromebook Gen 3
Lenovo Slim 3i Chromebook 14"
IdeaPad Slim 3i Chromebook (14", 8)
User Guide



Lenovo

Read this first

Before using this documentation and the product it supports, ensure that you read and understand the following:

- *Safety and Warranty Guide*
- *Setup Guide*
- [Generic Safety and Compliance Notices](#)

First Edition (October 2022)

© Copyright Lenovo 2022.

LIMITED AND RESTRICTED RIGHTS NOTICE: If data or software is delivered pursuant to a General Services Administration "GSA" contract, use, reproduction, or disclosure is subject to restrictions set forth in Contract No. GS-35F-05925.

Contents

Discover your Chromebook ii

Chapter 1. Meet your Chromebook . . . 1

Front 1
Base 2
Left 3
Right 4
Bottom 5
Features and specifications 6
Statement on USB transfer rate 7
Operating environment 7

Chapter 2. Get started with your Chromebook 9

Charge your Chromebook 9
Lock your Chromebook 9
Connect to Wi-Fi 10
Use the keyboard shortcuts 10
Use the touchpad 11
Use the touch screen (for selected models) 12
Use the camera 14
Use audio 14

Connect to an external display 15
Connect to Bluetooth devices 15
Set the power plan 15

Chapter 3. CRU replacement 17

What are CRUs 17
Replace a CRU 17
 Disabling the built-in battery 17
 Base cover assembly 18
 Right I/O bracket 19
 Left I/O bracket 20

Chapter 4. Help and support 21

Frequently asked questions 21
Lenovo Customer Support Center 21
Get help from Google 22

Appendix A. Open source information 25

Appendix B. Notices and trademarks 27

Discover your Chromebook

Thank you for choosing a Lenovo® Chromebook™! We are dedicated to delivering the best solution to you.

Before starting your tour, please read the following information:

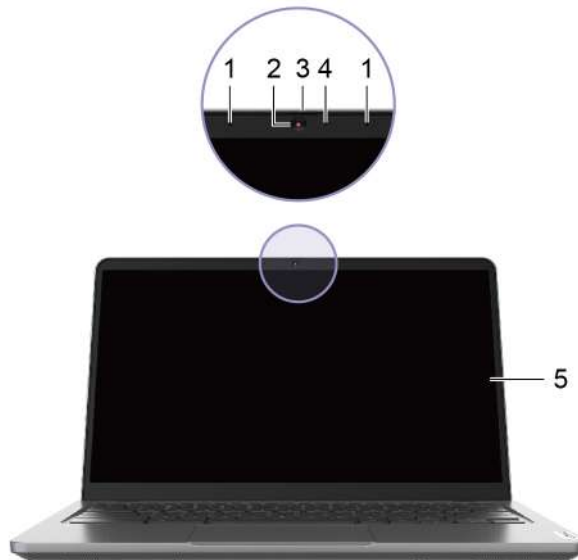
- This guide applies to Lenovo product model(s) listed below. Illustrations in this guide may look slightly different from your product model.

Model name	Machine type (MT)
Lenovo 14e Chromebook Gen 3	82W6, 82W7
IP Slim 3 Chrome 14IAN8	83BN

- For further compliance information, refer to the *Generic Safety and Compliance Notices* at https://pcsupport.lenovo.com/docs/generic_notices.
- Depending on the model, some optional accessories, features, software programs, and user interface instructions might not be applicable to your Chromebook.
- Documentation content is subject to change without notice. To get the latest documentation, go to <https://pcsupport.lenovo.com>.

Chapter 1. Meet your Chromebook


Front



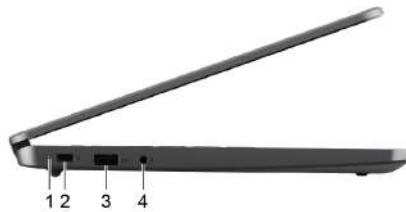
1. Microphones	Capture or record sound and voice.
2. Camera	Capture still and moving images for taking photos, recording videos, and video chatting.
3. Camera cover	Cover or uncover the camera lens. Note: The camera cover helps you better protect your privacy.
4. Camera light	If the light is on, the camera is in use.
5. Screen	Display text, graphics, and videos. Selected models support multi-touch function.

Base



1. Power button	<p>Press the button to turn on the computer or put the computer into sleep mode.</p> <p>Notes: When you finish working with your Chromebook, shut it down to save power.</p> <ul style="list-style-type: none">• Click  in the system tray.• Press the power button.
2. Keyboard	<p>Enter characters and interact with programs.</p> <p>Note: The keyboard also includes hotkeys and function keys for changing settings and performing tasks quickly.</p>
3. Wireless antennas	<p>Send and receive radio waves for the built-in wireless LAN (local area network) and Bluetooth module.</p> <p>Note: The antennas are not visible from the outside of the computer.</p>
4. Touchpad	<p>Perform finger touch and all the functions of a traditional mouse.</p> <p>Note: The touchpad also supports multi-touch function.</p>

Left



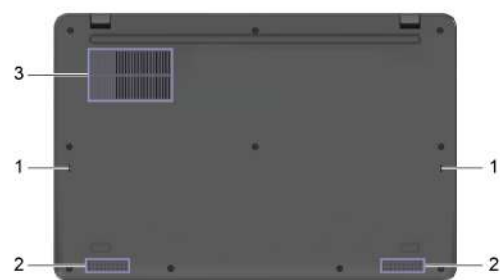
1. Charging light	<p>Indicate whether the computer is connected to ac power.</p> <ul style="list-style-type: none">• Solid white: connected to ac power; battery capacity 91%–100%• Solid amber: connected to ac power; battery capacity 1%–90%• Off: not connected to ac power
2. Power connector/USB Type-C®connector	<ul style="list-style-type: none">• Connect to power with the included power cord and ac power adapter.• Connect external display, storage, or data devices. <p>Note: An appropriate adapter may be needed for connecting external devices.</p>
3. USB (3.2 Gen 1) Type-A connector	<p>Connect a USB-compatible device, such as a USB keyboard, a USB mouse, a USB storage device, or a USB printer.</p>
4. Combo audio jack	<p>Connect headphones or headsets with a 3.5 mm (0.14 inch), 4-pole plug.</p> <p>Note: This jack does not support standalone external microphones. If you use headsets, choose one with a single plug.</p>

Right



1. USB (3.2 Gen 1) Type-A connector	Connect a USB-compatible device, such as a USB keyboard, a USB mouse, a USB storage device, or a USB printer.
2. HDMI™ connector	Connect to a compatible digital audio device or video monitor, such as an HDTV.
3. Nano security-lock slot	Lock your computer to a desk, table, or other fixtures through a compatible security cable lock. See “Lock your Chromebook” on page 9.

Bottom



1. Keyboard drainage holes	Drain out liquid from your Chromebook if you accidentally spill liquid on the keyboard.
2. Speakers	Produce sound.
3. Ventilation slots	Dissipate internal heat. Note: Do not block the ventilation slots. Otherwise, the computer might overheat.

Features and specifications

Note: Specifications might change without notice. Some specifications are model-specific and might not apply to the computer model that you purchased.

Dimensions	<ul style="list-style-type: none">• Width: 324.4 mm (12.8 inches)• Depth: 216.2 mm (8.5 inches)• Thickness: 19.3 mm (0.7 inches)
ac power adapter	<ul style="list-style-type: none">• Input: 100 V ac–240 V ac, 50 Hz–60 Hz• Output: 15 V dc, 3 A/20 V dc, 3.25 A• Power: 45 W/65 W
Battery pack	<ul style="list-style-type: none">• Capacity: 57 Wh• Number of cells: 3 <p>Note: The battery capacity is the typical or average capacity as measured in a specific test environment. Capacities measured in other environments may differ but are no lower than the rated capacity (see product label).</p>
Microprocessor	To view the microprocessor information of your computer, type system information in the search box and then press Enter.
Memory	<ul style="list-style-type: none">• Type: On board low power double data rate 5 (LPDDR5)• Number of physical slots: 0
Secondary storage device	<ul style="list-style-type: none">• Type: Embedded multi media card 5.1 (eMMC 5.1)• Bus: PCI Express• Capacity: 32 GB, 64 GB, or 128 GB <p>Note: The capacity of the storage device displayed in the operating system is typically lower than the nominal capacity.</p>
Screen	<ul style="list-style-type: none">• Size: 355.6 mm (14 inches)• Display resolution<ul style="list-style-type: none">– 1366 × 768 pixels (HD model)– 1920 × 1080 pixels (FHD model)
Keyboard	<ul style="list-style-type: none">• Function keys• Hotkeys• Keyboard backlight*

Connectors and slots	<ul style="list-style-type: none"> • Combo audio jack • USB (3.2 Gen 1) Type-A connector × 2 • USB Type-C connector <ul style="list-style-type: none"> – Power input up to 45 W/65 W using the included power adapter – Power output up to 5 V and 3 A – USB data transfer rate up to 10 Gbps for USB 3.2 Gen 2 • HDMI connector <ul style="list-style-type: none"> – Supports 1920× 1080 at 60 Hz as specified in HDMI 1.4 <p>Note: Data rates and performance ratings are dependent on connected devices and cables if they are used. For DisplayPort connection through a USB Type-C port, the listed maximum output capacity is only available on external displays with a DisplayPort, a Mini DisplayPort, or a USB Type-C port that supports DisplayPort Alternate Mode. For connections using a converter or an adapter, the actual output resolution may be lower.</p>
Security	<ul style="list-style-type: none"> • Fingerprint reader* • Nano security-lock slot
Network	Bluetooth and Wi-Fi® combo adapter

* for selected models

Statement on USB transfer rate

Depending on many factors such as the processing capability of the host and peripheral devices, file attributes, and other factors related to system configuration and operating environments, the actual transfer rate using the various USB connectors on this device will vary and will be slower than the data rate listed below for each corresponding device.

USB device	Data rate (Gbit/s)
2.0	0.48
3.2 Gen 1	5
3.2 Gen 2	10
3.2 Gen 2 × 2	20

Operating environment

Maximum altitude (without pressurization)

3048 m (10 000 ft)

Temperature

- Operating: 5°C to 35°C (41°F to 95°F)
- Storage: 5°C to 43°C (41°F to 109°F)

Note: When you charge the battery, its temperature must be no lower than 10°C (50°F).

Relative humidity

- Operating: 8% to 95% at wet-bulb temperature 23°C (73°F)

- Storage: 5% to 95% at wet-bulb temperature 27°C (81°F)

Chapter 2. Get started with your Chromebook

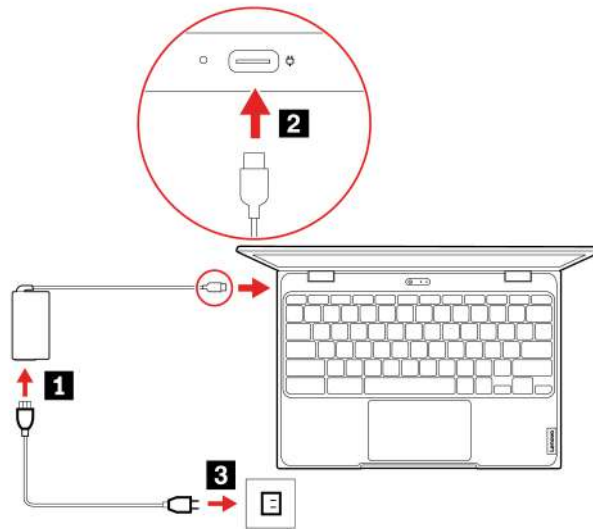
Charge your Chromebook

The USB Type-C connector on your Chromebook works as the power connector. Plug in the ac power adapter to charge the built-in battery pack and provide power to the Chromebook.

Connect to ac power

CAUTION:

All plugs must be firmly and securely inserted into receptacles.



1. Connect the power cord to the ac power adapter.
2. Plug the power adapter into the USB Type-C connector of the Chromebook.
3. Plug the power cord into an electrical outlet.

AC power status indicator behavior

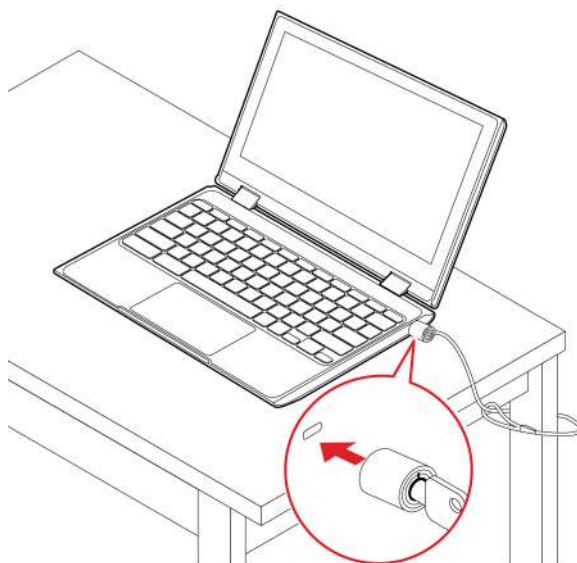
The ac power status indicator is next to the USB Type-C connector. The following table shows the indicator behaviors and the indicated power and battery status.

AC power status indicator	Power status	Battery status
on (red)	plugged in	being charged, remaining power is less than 5%
on (amber)	plugged in	being charged, remaining power is between 5% and 97%
on (green)	plugged in	fully charged (97% to 100%)
off	unplugged	discharging

Lock your Chromebook

Lock your computer to a desk, table, or other fixtures through a compatible security cable lock.

Note: The slot supports cable locks that conform to the Kensington NanoSaver® lock standards using Cleat™ locking technology. Do not attempt to use other types of cable locks that use a rotating T-bar™ locking mechanism. You are responsible for evaluating, selecting, and implementing the locking device and security feature. Lenovo makes no comments, judgments, or warranties about the function, quality, or performance of the locking device and security feature. Cable locks for your product are available from Lenovo at <https://www.lenovoquickpick.com/>.



Connect to Wi-Fi



To connect your Chromebook to Wi-Fi:

1. Click your account picture.
2. Click the network icon and turn on the wireless feature.
3. Select an available network to connect. Provide required information if needed.







Use the keyboard shortcuts

The function keys on the keyboard help you work more easily and effectively.

	Go to the previous page
	Reload your current page
	Hide the tabs and the App Launcher in full-screen mode
	Show all windows in overview mode
	Decrease the brightness of the computer screen
	Increase the brightness of the computer screen
	Mute/Unmute the microphone
	Mute/Unmute sound
	Decrease the volume

	Increase the volume
	Turn on the Chromebook, put it to sleep mode, or wake it up

Your Chromebook also supports some key combinations.

alt + 	Go to the previous page
ctrl + 	Take a screenshot
alt + 	Switch the Caps Lock function
 + l	Lock your computer screen
ctrl + alt + ?	View all keyboard shortcuts
*alt + 	Turn off the keyboard backlight and decrease the brightness
*alt + 	Turn on the keyboard backlight and increase the brightness

* for selected models

To change the keyboard settings:

1. Click the setting icon in the system tray, and then click **Device → Keyboard**.
2. Follow the on-screen instructions to change the settings as you prefer.

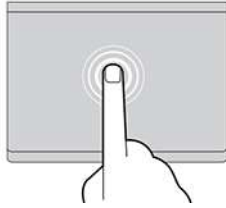
Use the touchpad

The entire touchpad surface is sensitive to finger touch and movement. You can use the touchpad to perform all the pointing, clicking, and scrolling functions of a traditional mouse.

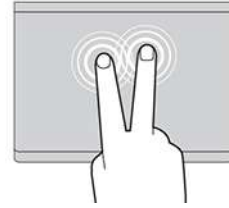
Use the touch gestures

Notes:

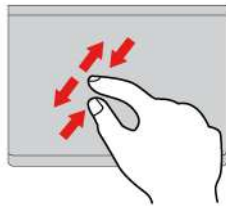
- When using two or more fingers, ensure that you position your fingers slightly apart.
- Some gestures are only available when you are using certain apps.
- If the touchpad surface is stained with oil, turn off the Chromebook first. Then, gently wipe the touchpad surface with a soft and lint-free cloth moistened with lukewarm water or computer cleaner.



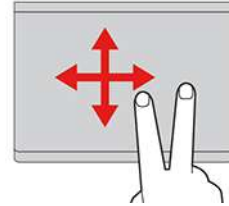
Tap once to select or open an item.



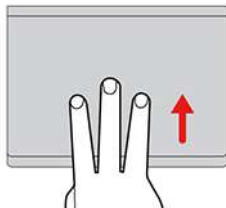
Tap twice quickly to display a shortcut menu.



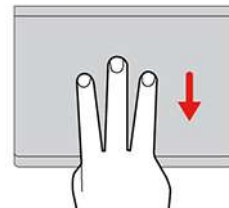
Two-finger zoom in or zoom out.



Scroll through items.



Open the task view.



Show the current window.

To change the settings:

1. Click the setting icon in the system tray, and then click **Device → Touchpad**.
2. Follow the on-screen instructions to change the settings as you prefer.

If **Enable tap-to-click** is turned on, you can tap or press the touchpad. Otherwise, you can only press the touchpad to achieve the clicking function of a traditional mouse.

Use the touch screen (for selected models)

If your Chromebook display supports the multi-touch function, you can navigate the screen with simple touch gestures.

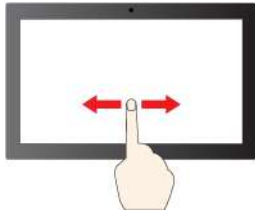
Note: Some gestures might not be available depending on the app you use.



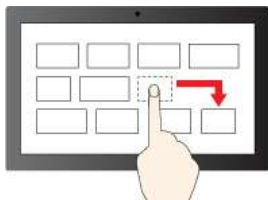
Tap once to single click



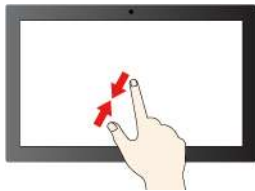
Tap and hold to right-click



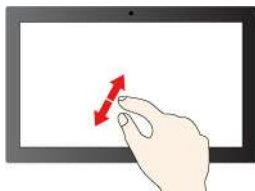
Slide to scroll through items



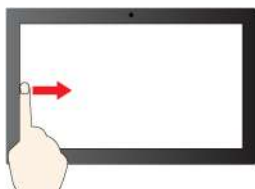
Drag



Zoom out



Zoom in



Swipe from the left: view all open windows



Swipe from the right: open action center



Tap with two fingers to open a shortcut menu



Swipe upwards to unfold the app Launcher

Maintenance tips:

- Turn off the Chromebook before cleaning the multi-touch screen.
- Use a dry, soft, and lint-free cloth or a piece of absorbent cotton to remove fingerprints or dust from the multi-touch screen. Do not apply solvents to the cloth.
- The multi-touch screen is a glass panel covered with a plastic film. Do not apply pressure or place any metallic object on the screen, which might damage the touch panel or cause it to malfunction.
- Do not use fingernails, gloved fingers, or inanimate objects for input on the screen.
- Regularly calibrate the accuracy of the finger input to avoid a discrepancy.

Use the camera

The built-in camera can be used for video calling or video conferencing. The indicator next to the camera turns on when the camera is activated.

To take photos with the camera:

1. Click the Launcher button, and then click **All apps**.
2. Click **Camera**.
3. Click the camera icon.

Use audio

You can connect headphones or a headset with a 3.5-mm (0.14-inch), 4-pole plug to the audio connector to listen to the sound from your Chromebook.

To play a saved audio or video:

1. Click the Launch button, and then select **Files**.
2. Double-click a file to open it in the media player.

To adjust the volume, click the account picture, and then adjust the volume as you prefer.

Connect to an external display

You can use the Chromebook's USB Type-C connectors to connect a projector or an external display.

1. Use a USB Type-C to USB Type-C cable (not supplied) to connect your Chromebook to an external display.

Note: If the external display does not support input through USB Type-C connector, you may need to purchase and use adapters. Lenovo provides various USB Type-C accessories at <https://www.lenovo.com/accessories>, to help you expand your computer functionality.

2. Connect the external display to an electrical outlet.
3. Turn on the external display.

To change display settings:

1. Click your account picture, and then click **Settings**.
2. In the **Device** section, click **Displays**.
3. Follow the on-screen instructions to change the display settings as you desire.

Connect to Bluetooth devices

Your Chromebook supports Bluetooth feature. You can connect your Chromebook to a Bluetooth keyboard, mouse, speakers, or other Bluetooth devices.

Note: The Bluetooth devices must be within a short distance, usually 10 meters (33 feet), from the Chromebook.

1. Click your account picture, and then click the Bluetooth icon.
2. Turn on **Bluetooth**.
3. Select the device you want to pair and follow the on-screen instructions.

Set the power plan

For ENERGY STAR® compliant Chromebooks, the following power plan takes effect when your Chromebooks have been idle for a specified duration:

Table 1. Default power plan (when plugged into ac power)

- | |
|--|
| <ul style="list-style-type: none">• Turn off the display: After seven minutes and 30 seconds• Put the Chromebook into sleep: After seven minutes and 30 seconds |
|--|

To reset the power plan to achieve the best balance between performance and power saving:

1. Click the setting icon in the system tray, and then click **Device → Power**.
2. Follow the on-screen instructions to change the settings as you prefer.

Chapter 3. CRU replacement

Customer Replaceable Units (CRUs) are parts that can be upgraded or replaced by the customer. The computers contain the following types of CRUs:

- **Self-service CRUs:** Refer to parts that can be installed or replaced easily by customer themselves or by trained service technicians at an additional cost.
- **Optional-service CRUs:** Refer to parts that can be installed or replaced by customers with a greater skill level. Trained service technicians can also provide service to install or replace the parts under the type of warranty designated for the customer's machine.

If you intend on installing a CRU, Lenovo will ship the CRU to you. CRU information and replacement instructions are shipped with your product and are available from Lenovo at any time upon request. You might be required to return the defective part that is replaced by the CRU. When return is required: (1) return instructions, a prepaid shipping label, and a container will be included with the replacement CRU; and (2) you might be charged for the replacement CRU if Lenovo does not receive the defective CRU within thirty (30) days of your receipt of the replacement CRU. For full details, see the Lenovo Limited Warranty documentation at https://www.lenovo.com/warranty/llw_02.

What are CRUs

Refer to the following CRU list for your Chromebook.

Self-service CRUs

- ac power adapter
- Power cord

Optional-service CRUs

- Base cover assembly
- Left I/O bracket
- Right I/O bracket

Note: Replacement of any parts not listed above, including the built-in rechargeable battery, must be done by a Lenovo-authorized repair facility or technician. Go to <https://support.lenovo.com/partnerlocation> for more information.

Replace a CRU

Follow the replacement procedure to replace a CRU.

Disabling the built-in battery

Before replacing any CRU, ensure that you disable the built-in battery.

To disable the built-in battery, press **C** together with the power button, and detach the ac power adapter from the Chromebook at the same time.

Note: Power supply from the built-in battery will resume after you reconnect the Chromebook to the ac power adapter.

Base cover assembly

Prerequisite

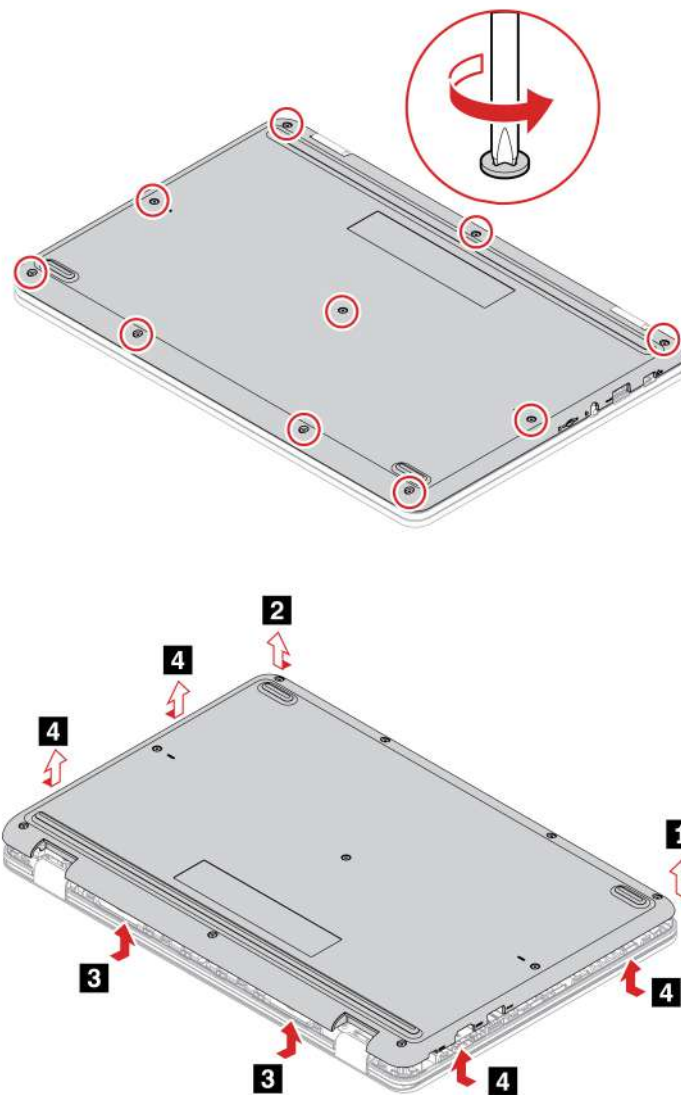
Before you start, read [Generic Safety and Compliance Notices](#) and print the following instructions.

Note: Do not remove the base cover assembly when your Chromebook is connected to ac power. Otherwise, there might be a risk of short circuits.

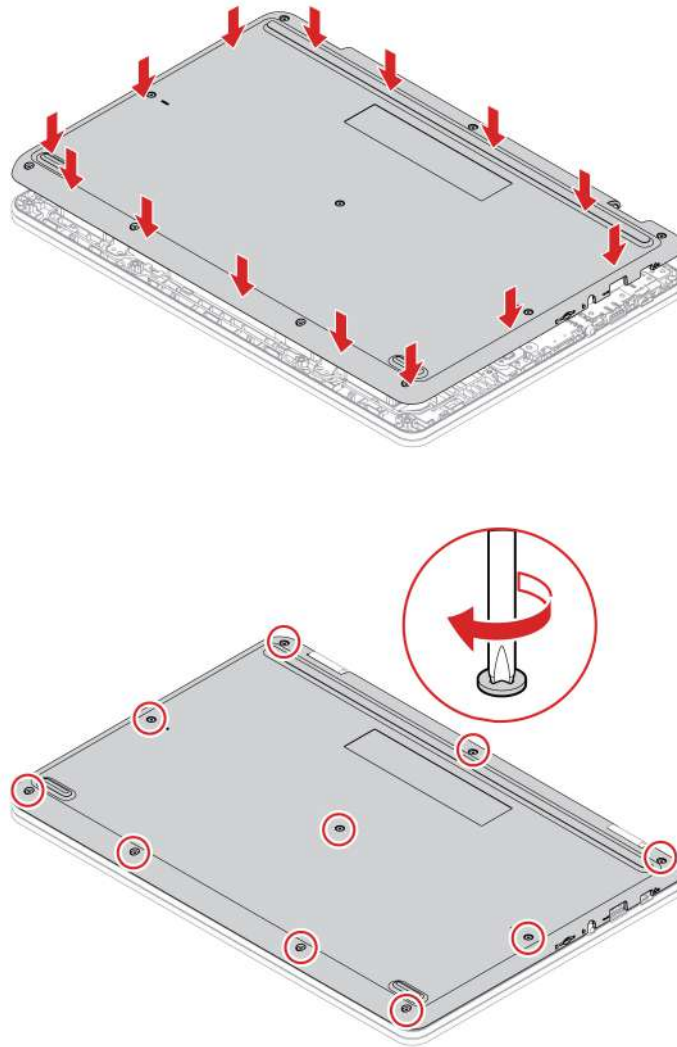
For access, do the following:

1. Turn off the Chromebook and disconnect the Chromebook from ac power and all connected cables.
2. Close the Chromebook display and turn over the Chromebook .

Removal procedure



Installation procedure



Troubleshooting

If the Chromebook does not start up after you reinstall the base cover assembly, disconnect the ac power adapter and then reconnect it to the Chromebook .

Right I/O bracket

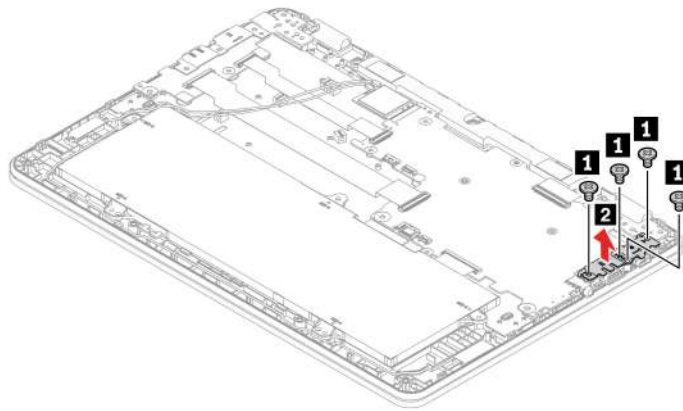
Prerequisite

Before you start, read [Generic Safety and Compliance Notices](#) and print the following instructions.

For access, do the following:

1. Turn off the Chromebook and disconnect the Chromebook from ac power and all connected cables.
2. Close the Chromebook display and turn the Chromebook over.
3. Remove the base cover assembly. See “Base cover assembly” on page 18.

Removal procedure



Left I/O bracket

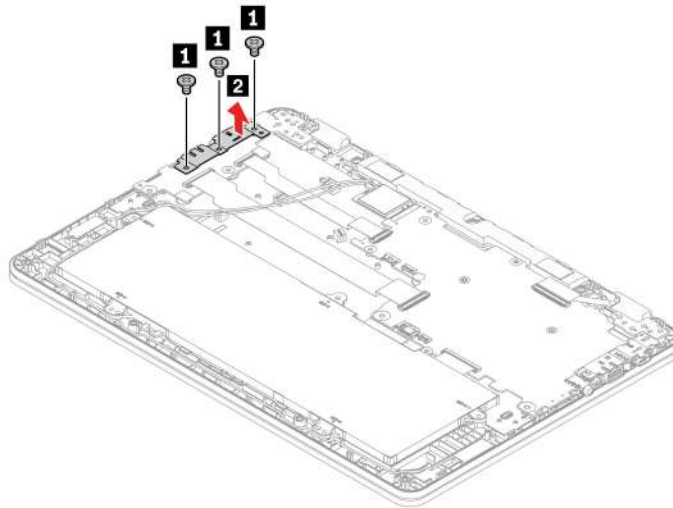
Prerequisite

Before you start, read [Generic Safety and Compliance Notices](#) and print the following instructions.

For access, do the following:

1. Turn off the Chromebook and disconnect the Chromebook from ac power and all connected cables.
2. Close the Chromebook display and turn the Chromebook over.
3. Remove the base cover assembly. See “Base cover assembly” on page 18.

Removal procedure



Chapter 4. Help and support

Frequently asked questions

What do I do if my Chromebook stops responding?

1. Press and hold the power button until the Chromebook turns off. Then, restart the Chromebook.
2. If step 1 does not work:
 - For models with an emergency reset hole: Insert a straightened paper clip into the emergency reset hole to cut off power supply temporarily. Then, restart the Chromebook with ac power connected.
 - For models without an emergency reset hole:
 - For models with the removable battery, remove the removable battery and disconnect all power sources. Then, reconnect to ac power and restart the Chromebook.
 - For models with the built-in battery, disconnect all power sources. Press and hold the power button for about seven seconds. Then, reconnect to ac power and restart the Chromebook.

What do I do if I spill liquid on the Chromebook?

1. Carefully unplug the ac power adapter and turn off the Chromebook immediately. The more quickly you stop the current from passing through the Chromebook the more likely you will reduce damage from short circuits.
Attention: Although you might lose some data or work by turning off the Chromebook immediately, leaving the Chromebook on might make your Chromebook unusable.
2. Do not try to drain out the liquid by turning over the Chromebook. If your Chromebook has keyboard drainage holes on the bottom, the liquid will be drained out through the holes.
3. Wait until you are certain that all the liquid is dry before turning on your Chromebook.

How do I disinfect my Chromebook?

1. Squeeze out excess liquid from wipe or disinfecting cloth before using. Recommended wipes are hydrogen peroxide wipes and alcohol based wipes. Do not use wipes containing sodium hypochlorite (bleach).
2. Gently wipe the Chromebook thoroughly, being careful to ensure no liquid drips into the Chromebook. Do not wipe on connector pins.
3. After disinfecting, follow the cleaning procedure from the wipe supplier to minimize chemical buildup of disinfectant residue.
4. Always allow the Chromebook to completely dry prior to any use.

For more information about cleaning and disinfecting, go to <https://support.lenovo.com/in/en/solutions/ht035676>.

How do I find accessibility information?

<https://www.lenovo.com/accessibility>

Lenovo Customer Support Center

If you have tried to correct the problem yourself and still need help, you can call Lenovo Customer Support Center.

Before you contact Lenovo

Record product information and problem details before you contact Lenovo.

Production information	Problem symptoms and details
<ul style="list-style-type: none">• Product name• Machine type and serial number	<ul style="list-style-type: none">• What is the problem? Is it continuous or intermittent?• Any error message or error code?• What operating system are you using? Which version?• Which software applications were running at the time of the problem?• Can the problem be reproduced? If so, how?

Note: The product name and serial number can usually be found on the bottom of the computer, either printed on a label or etched on the cover.

Telephone numbers

For a list of the Lenovo Support phone numbers for your country or region, go to <https://pcsupport.lenovo.com/supportphonenumberlist> for the latest phone numbers.

Note: Phone numbers are subject to change without notice. If the number for your country or region is not provided, contact your Lenovo reseller or Lenovo marketing representative.

Services available during the warranty period

- Problem determination - Trained personnel are available to assist you with determining if you have a hardware problem and deciding what action is necessary to fix the problem.
- Lenovo hardware repair - If the problem is determined to be caused by Lenovo hardware under warranty, trained service personnel are available to provide the applicable level of service.
- Engineering change management - Occasionally, there might be changes that are required after a product has been sold. Lenovo or your reseller, if authorized by Lenovo, will make selected Engineering Changes (ECs) that apply to your hardware available.

Services not covered

- Replacement or use of parts not manufactured for or by Lenovo or nonwarranted parts
- Identification of software problem sources
- Configuration of UEFI BIOS as part of an installation or upgrade
- Changes, modifications, or upgrades to device drivers
- Installation and maintenance of network operating systems (NOS)
- Installation and maintenance of programs

For the terms and conditions of the Lenovo Limited Warranty that apply to your Lenovo hardware product, go to:

- https://www.lenovo.com/warranty/llw_02
- <https://pcsupport.lenovo.com/warrantylookup>

Get help from Google

After signing in to your Chromebook, start Get Help from the app Launcher. The Get Help app provides comprehensive instructions on using your Chromebook.

In addition, if you are interested in visiting the Chromebook Help Center and Community, go to <http://support.google.com/chromebook>.

Appendix A. Open source information

Your Chromebook may include software made publicly available by Google and other third parties, including software licensed under the General Public License and/or the Lesser General Public License (the “open source software”).

You may obtain a copy of the corresponding source code for any such open source software licensed under the General Public License and/or the Lesser General Public License (or any other license requiring us to make a written offer to provide corresponding source code to you) from Lenovo for a period of three years without charge except for the cost of media, shipping, and handling, upon written request to Lenovo. This offer is valid to anyone in receipt of this device. You may send your request in writing to the address below accompanied by a check or money order for \$5 to:

*Lenovo Legal Department
Attn: Open Source Team / Source Code Requests
8001 Development Dr.
Morrisville, NC 27560*

As part of your request, please include a “UNAME” and a “CHROME VERSION” of this device available by typing: “Chrome://system” in a Chrome Browser’s address bar. Be sure to provide a return address.

The open source software is distributed in hope it will be useful, but WITHOUT ANY WARRANTY; without even the implied warranty of MERCHANTABILITY or FITNESS FOR A PARTICULAR PURPOSE. See for example the GNU General Public License and/or the Lesser General Public License for more information.

To view additional information regarding licenses, acknowledgments and required copyright notices for the open source software used in your device, type: “Chrome://credits” in the Chrome Browser’s address bar.

This device may include certain pre-installed application programs or pre-configured links for downloading application programs published by parties other than Lenovo. Such third-party application programs may include open source software made publicly available by the respective publishers of those application programs. You may obtain the corresponding source code for any such open source software directly from the publisher of the applicable application program, to the extent permitted under the relevant open source software license agreement. Additional information is provided by the publisher of each application program within the menu structure of its application program.

Appendix B. Notices and trademarks

Notices

Lenovo may not offer the products, services, or features discussed in this document in all countries. Consult your local Lenovo representative for information on the products and services currently available in your area. Any reference to a Lenovo product, program, or service is not intended to state or imply that only that Lenovo product, program, or service may be used. Any functionally equivalent product, program, or service that does not infringe any Lenovo intellectual property right may be used instead. However, it is the user's responsibility to evaluate and verify the operation of any other product, program, or service.

Lenovo may have patents or pending patent programs covering subject matter described in this document. The furnishing of this document does not give you any license to these patents. You can send license inquiries, in writing, to:

*Lenovo (United States), Inc.
8001 Development Drive
Morrisville, NC 27560
U.S.A.
Attention: Lenovo Director of Licensing*

LENOVO PROVIDES THIS PUBLICATION "AS IS" WITHOUT WARRANTY OF ANY KIND, EITHER EXPRESS OR IMPLIED, INCLUDING, BUT NOT LIMITED TO, THE IMPLIED WARRANTIES OF NON-INFRINGEMENT, MERCHANTABILITY OR FITNESS FOR A PARTICULAR PURPOSE. Some jurisdictions do not allow disclaimer of express or implied warranties in certain transactions, therefore, this statement may not apply to you.

Changes are made periodically to the information herein; these changes will be incorporated in new editions of the publication. To provide better service, Lenovo reserves the right to improve and/or modify the products and software programs described in the manuals included with your computer, and the content of the manual, at any time without additional notice.

The software interface and function and hardware configuration described in the manuals included with your computer might not match exactly the actual configuration of the computer that you purchase. For the configuration of the product, refer to the related contract (if any) or product packing list, or consult the distributor for the product sales. Lenovo may use or distribute any of the information you supply in any way it believes appropriate without incurring any obligation to you.

The products described in this document are not intended for use in implantation or other life support applications where malfunction may result in injury or death to persons. The information contained in this document does not affect or change Lenovo product specifications or warranties. Nothing in this document shall operate as an express or implied license or indemnity under the intellectual property rights of Lenovo or third parties. All information contained in this document was obtained in specific environments and is presented as an illustration. The result obtained in other operating environments may vary.

Lenovo may use or distribute any of the information you supply in any way it believes appropriate without incurring any obligation to you.

Any references in this publication to non-Lenovo Web sites are provided for convenience only and do not in any manner serve as an endorsement of those Web sites. The materials at those Web sites are not part of the materials for this Lenovo product, and use of those Web sites is at your own risk.

Any performance data contained herein was determined in a controlled environment. Therefore, the result obtained in other operating environments may vary significantly. Some measurements may have been made on development-level systems and there is no guarantee that these measurements will be the same on generally available systems. Furthermore, some measurements may have been estimated through extrapolation. Actual results may vary. Users of this document should verify the applicable data for their specific environment.

This document is copyrighted by Lenovo and is not covered by any open source license, including any Linux® agreement(s) which may accompany software included with this product. Lenovo may update this document at any time without notice.

For the latest information or any questions or comments, contact or visit the Lenovo Web site:

<https://pcsupport.lenovo.com>

Trademarks

LENOVO and LENOVO logo are trademarks of Lenovo. ENERGY STAR is a registered trademark of the U.S. Environmental Protection Agency. Google, Google Keep, and Chromebook are trademarks or registered trademarks of Google LLC. DisplayPort is a trademark of the Video Electronics Standards Association. The terms HDMI and HDMI High-Definition Multimedia Interface, and the HDMI logo are trademarks or registered trademarks of HDMI Licensing Administrator, Inc. in the United States and other countries. NanoSaver and Cleat are trademarks or registered trademarks of ACCO Brands. USB Type-C is a registered trademark of USB Implementers Forum. Wi-Fi is a registered trademark of Wi-Fi Alliance. All other trademarks are the property of their respective owners.

Lenovo