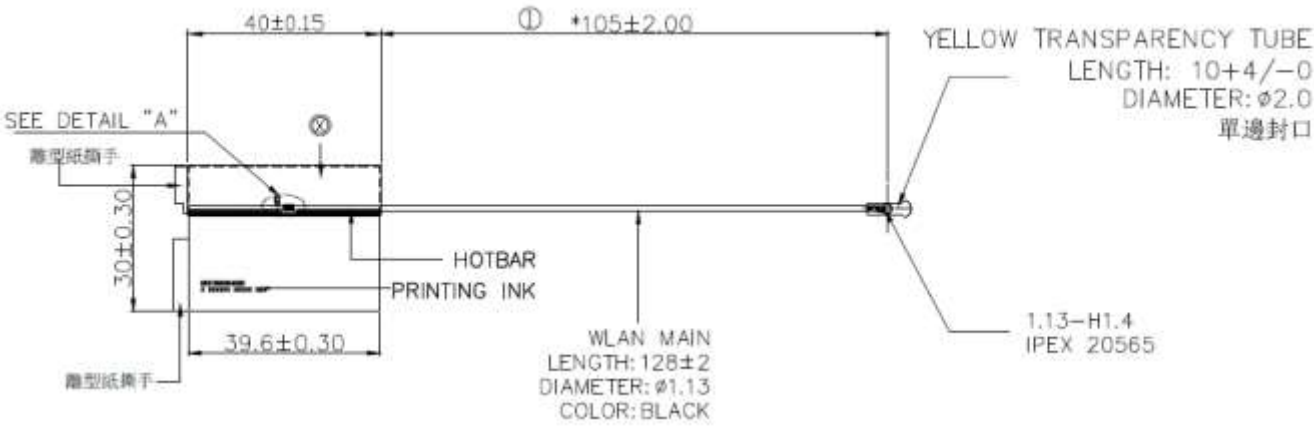


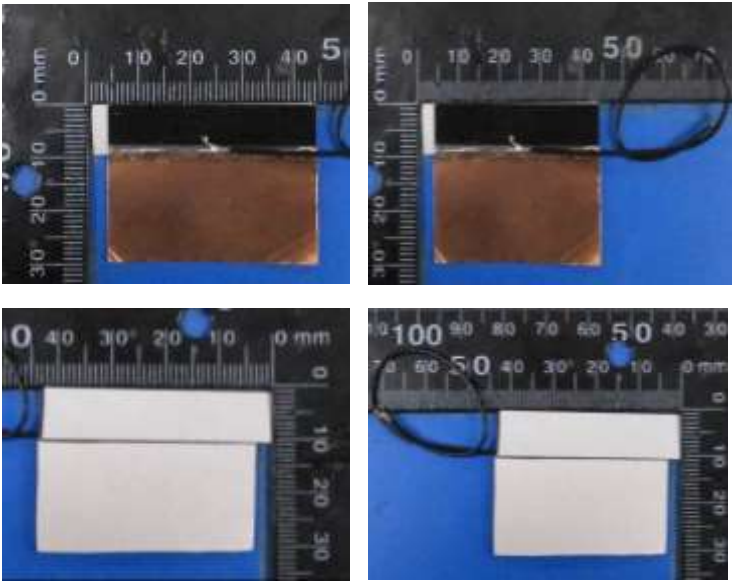
Section 2. Dimensioned Photos or Drawings of Antennas

Include a dimensioned photo and dimensioned drawing of Main antenna here.

Main Antenna Dimensioned Drawing:



Main Antenna Photo (Front/Back):



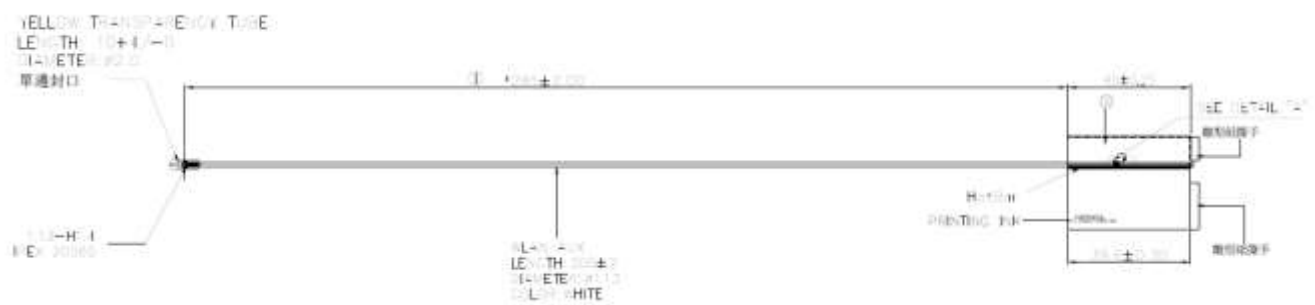
Antenna Manufacturer: WNC

Antenna Part Number: 025.9020M.0021 (Main), 025.9020N.0021 (Aux)

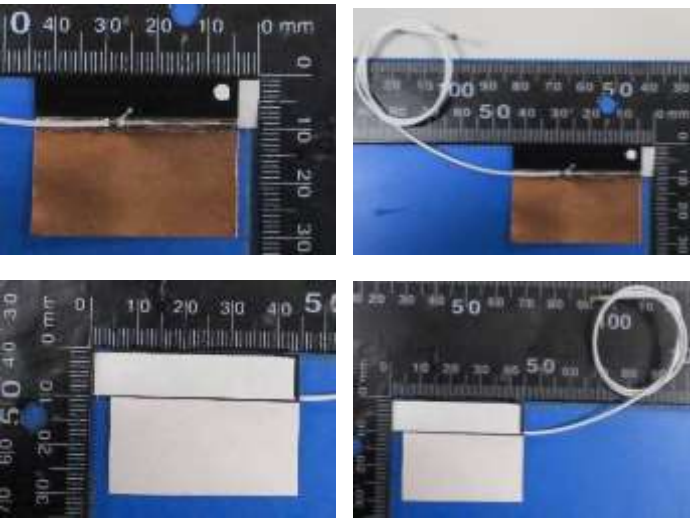
Note: antenna photo should include L type ruler

Include a dimensioned photo and dimensioned drawing of Aux antenna here.

Aux Antenna Dimensioned Drawing:



Aux Antenna Photo (Front/Back):



Antenna Manufacturer: WNC

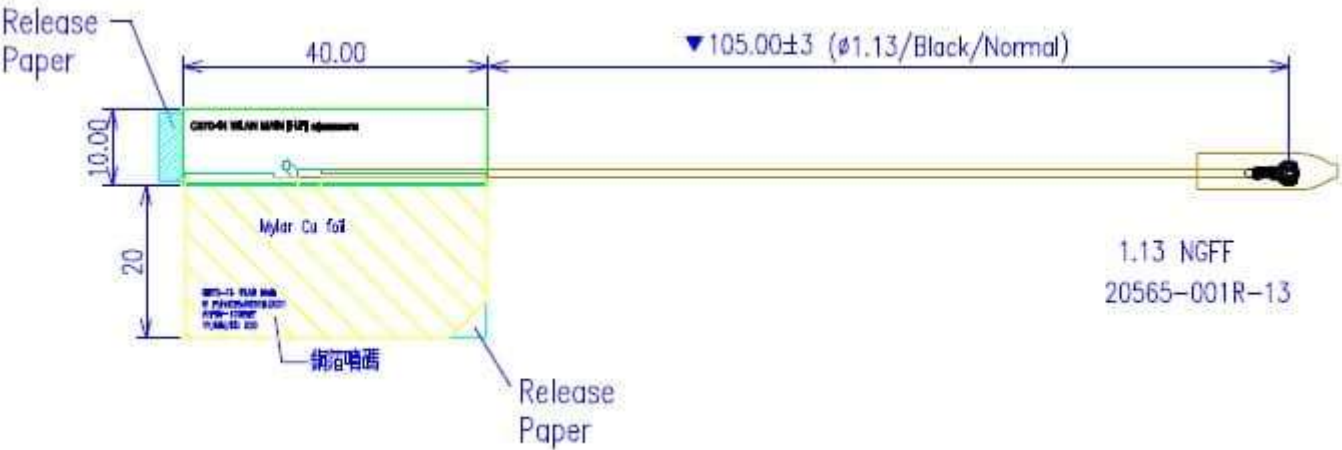
Antenna Part Number: 025.9020M.0021 (Main), 025.9020N.0021 (Aux)

Note: antenna photo should include L type ruler

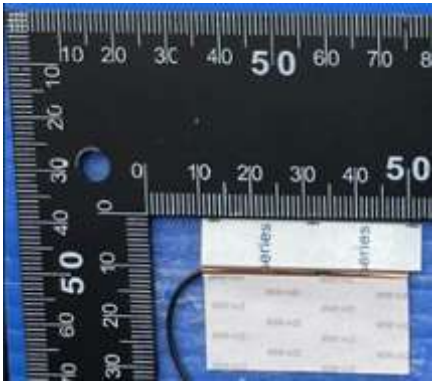
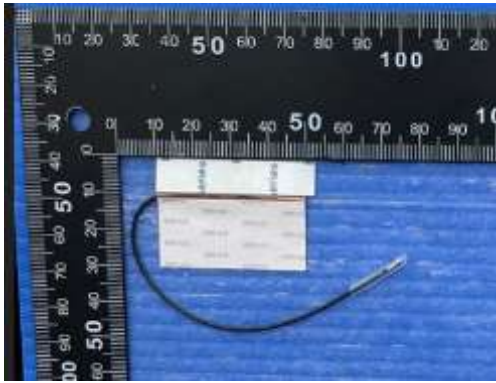
Section 2. Dimensioned Photos or Drawings of Antennas

Include a dimensioned photo and dimensioned drawing of Main antenna here.

Main Antenna Dimensioned Drawing:



Main Antenna Photo (Front/Back):



Antenna Manufacturer: AWAN

Antenna Part Number: 025.9020M.0001 (Main), 025.9020N.0001 (Aux)

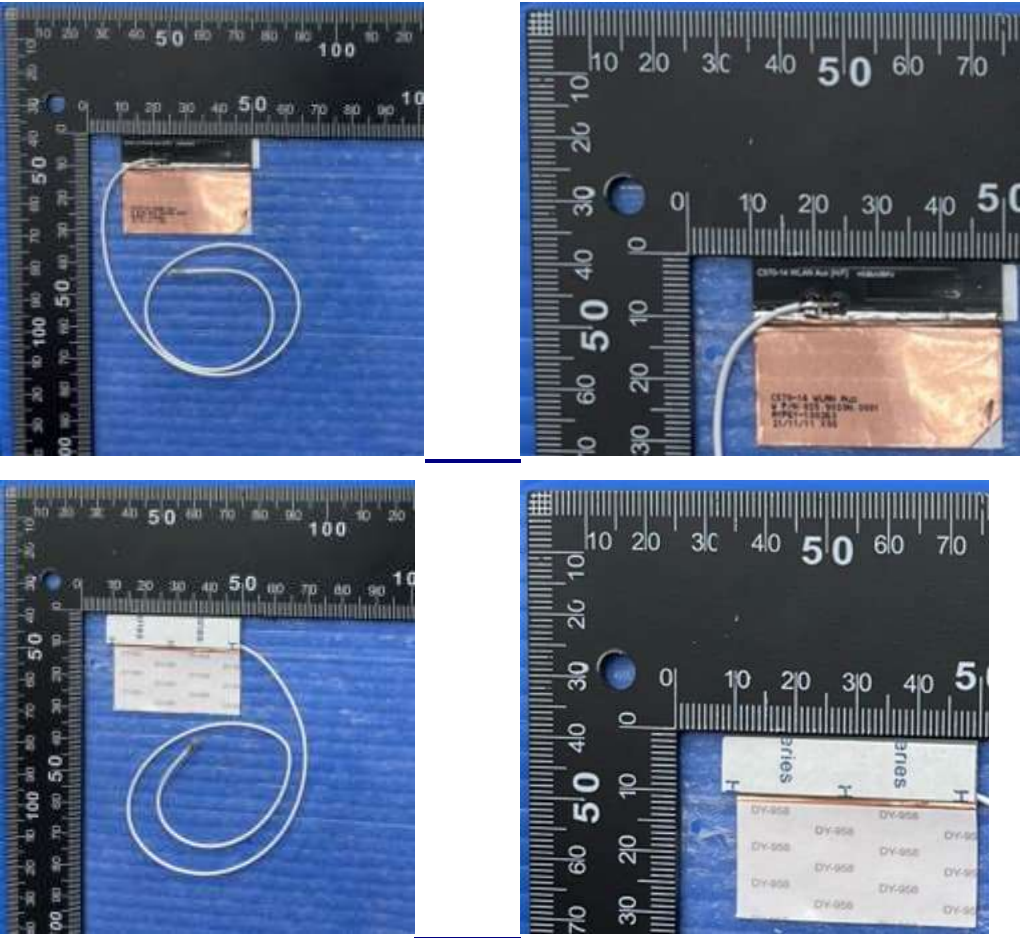
Note: antenna photo should include L type ruler

Include a dimensioned photo and dimensioned drawing of Aux antenna here.

Aux Antenna Dimensioned Drawing:



Aux Antenna Photo (Front/Back):



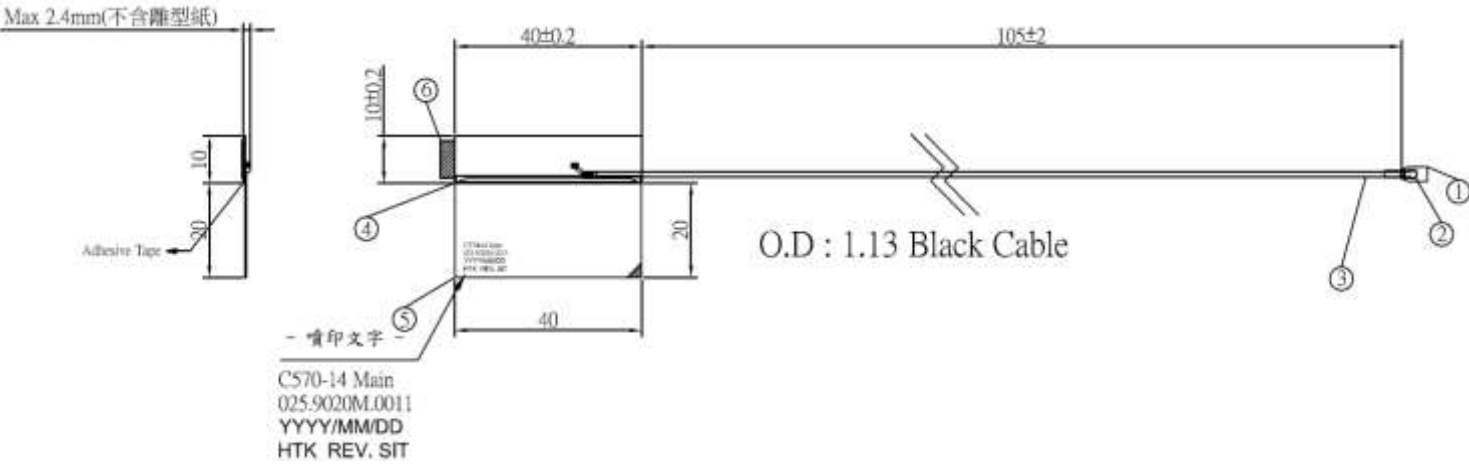
Antenna Manufacturer: AWAN

Antenna Part Number: 025.9020M.0001 (Main), 025.9020N.0001 (Aux)

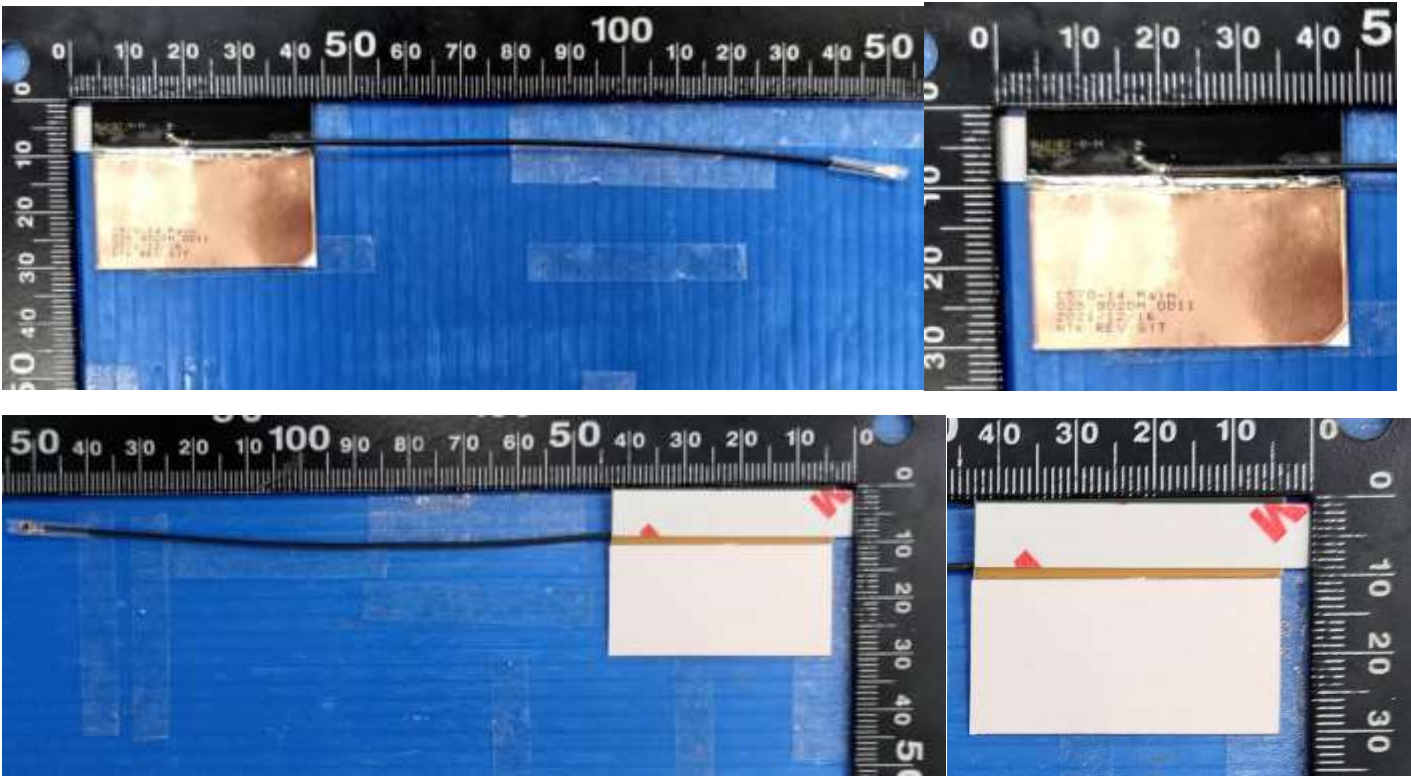
Section 2. Dimensioned Photos or Drawings of Antennas

Include a dimensioned photo and dimensioned drawing of Main antenna here.

Main Antenna Dimensioned Drawing:



Main Antenna Photo (Front/Back):



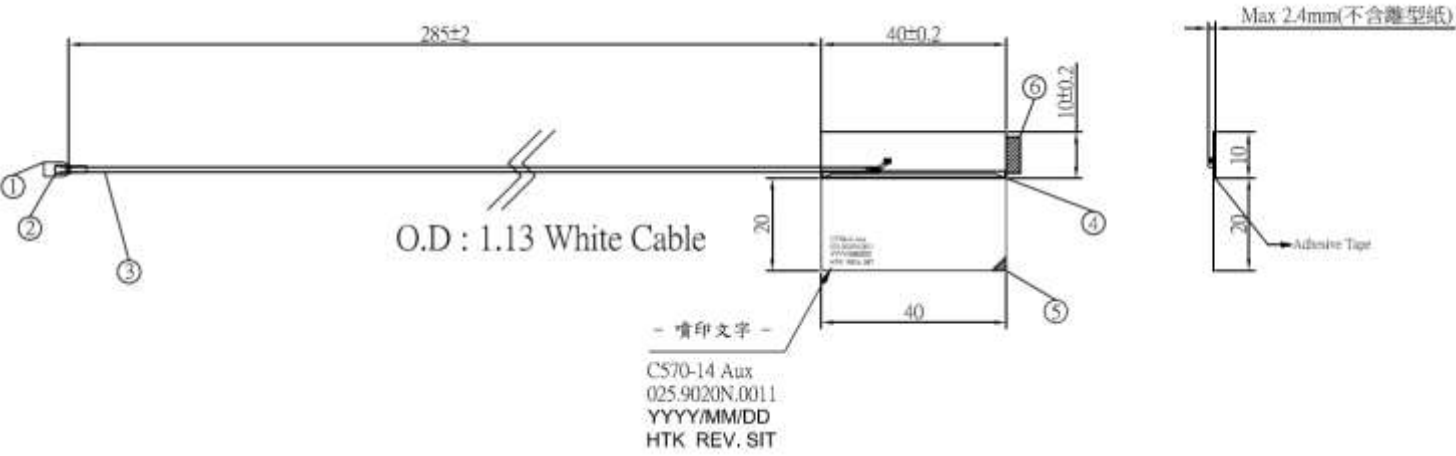
Antenna Manufacturer: High-Tek Electronics Co., Ltd

Antenna Part Number: 025.9020M.0011 (Main), 025.9020N.0011 (Aux)

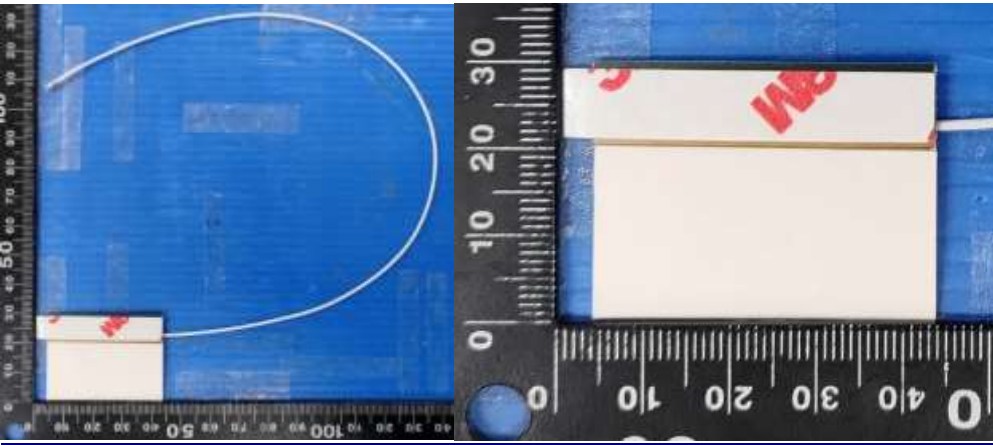
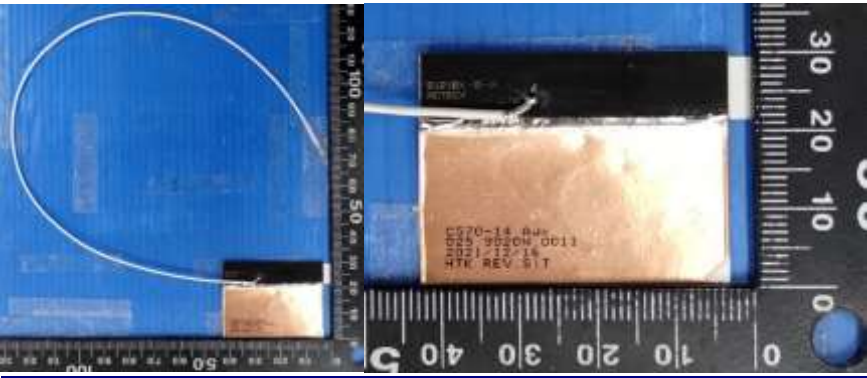
Note: antenna photo should include L type ruler

Include a dimensioned photo and dimensioned drawing of Aux antenna here.

Aux Antenna Dimensioned Drawing:



Aux Antenna Photo (Front/Back):



Antenna Manufacturer: High-Tek Electronics Co., Ltd

Antenna Part Number: 025.9020M.0011 (Main), 025.9020N.0011 (Aux)

Note: antenna photo should include L type ruler