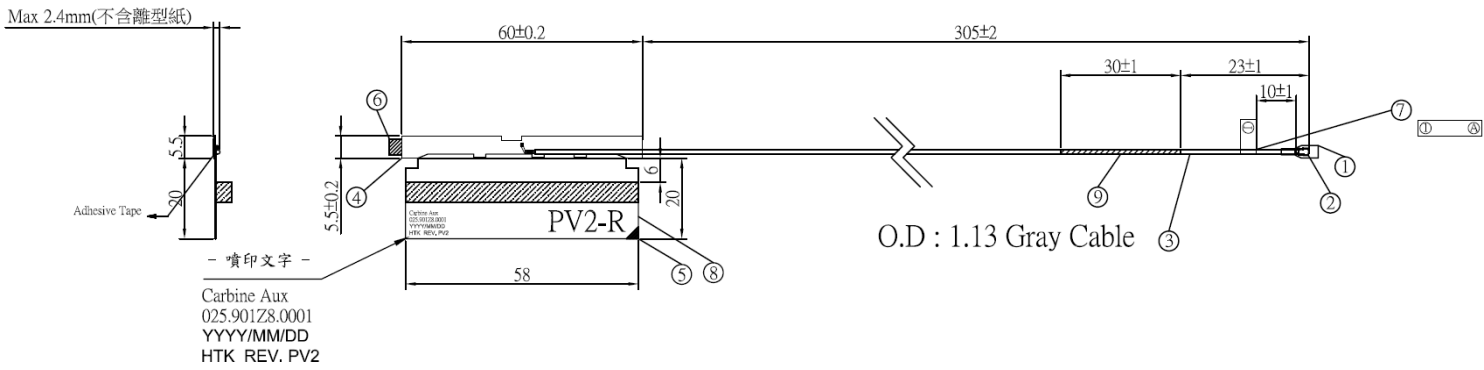


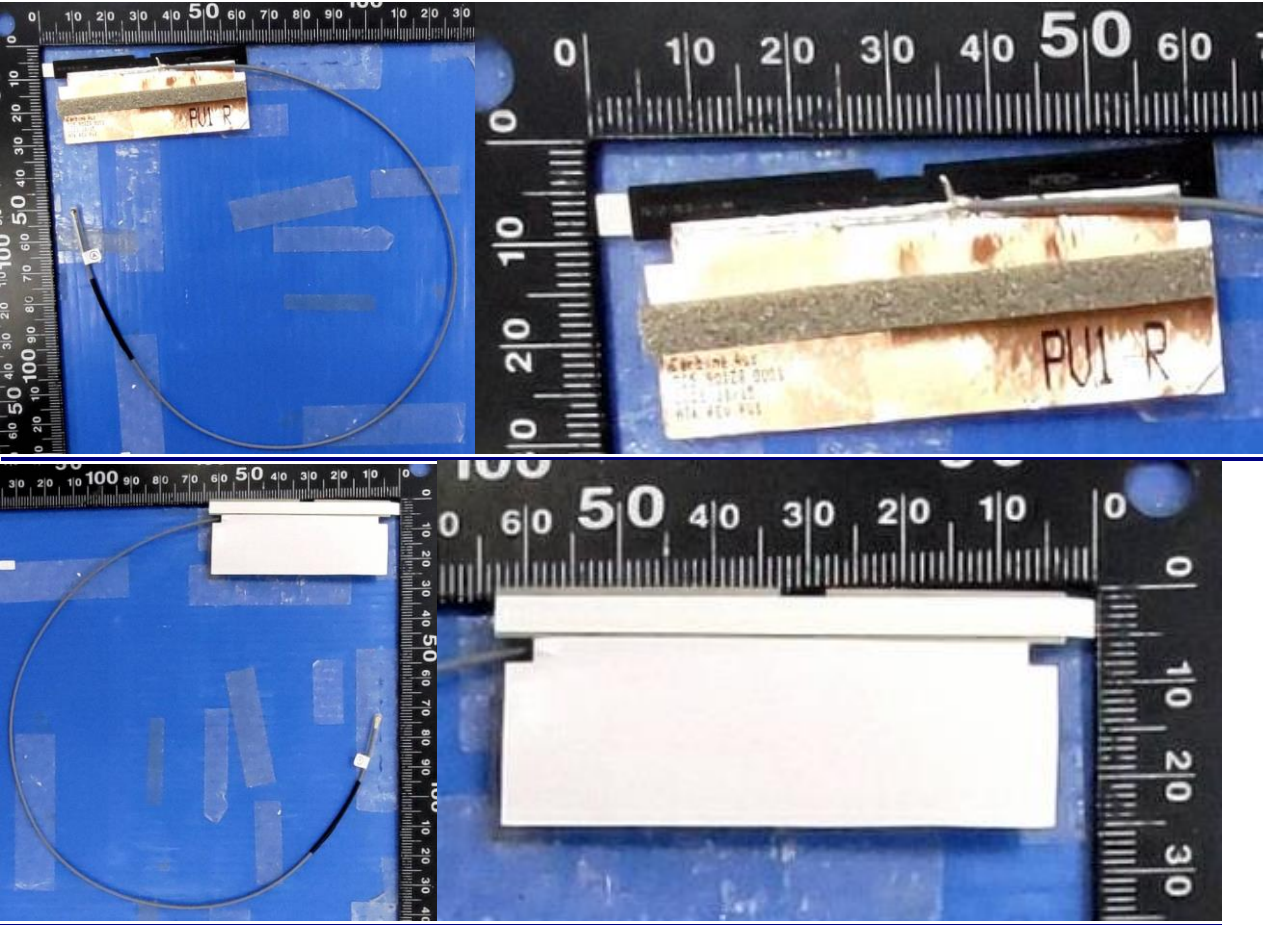
Section 2. Dimensioned Photos or Drawings of Antennas

Include a dimensioned photo and dimensioned drawing of Tx1 antenna here.

Tx1 Antenna Dimensioned Drawing:

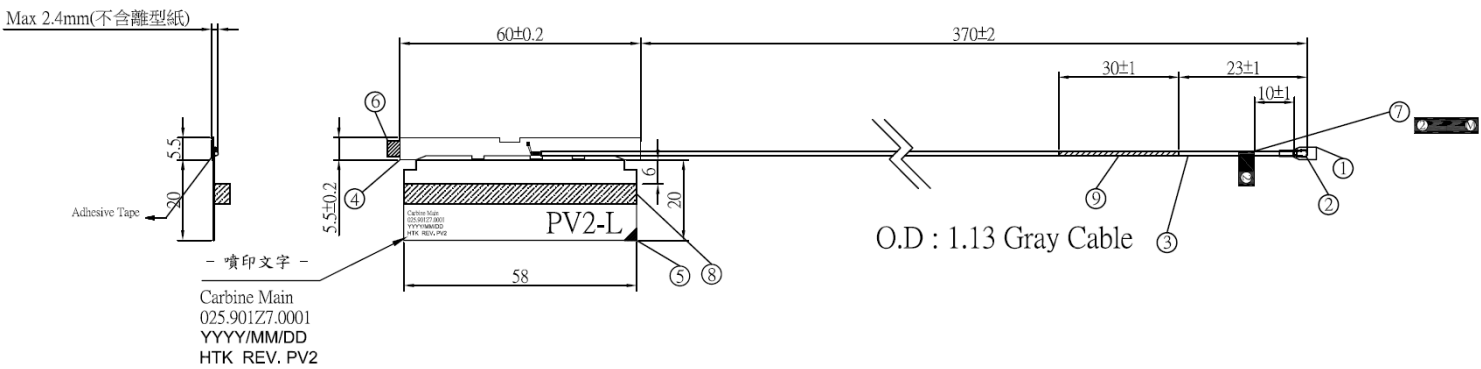


Tx1 Antenna Photo:

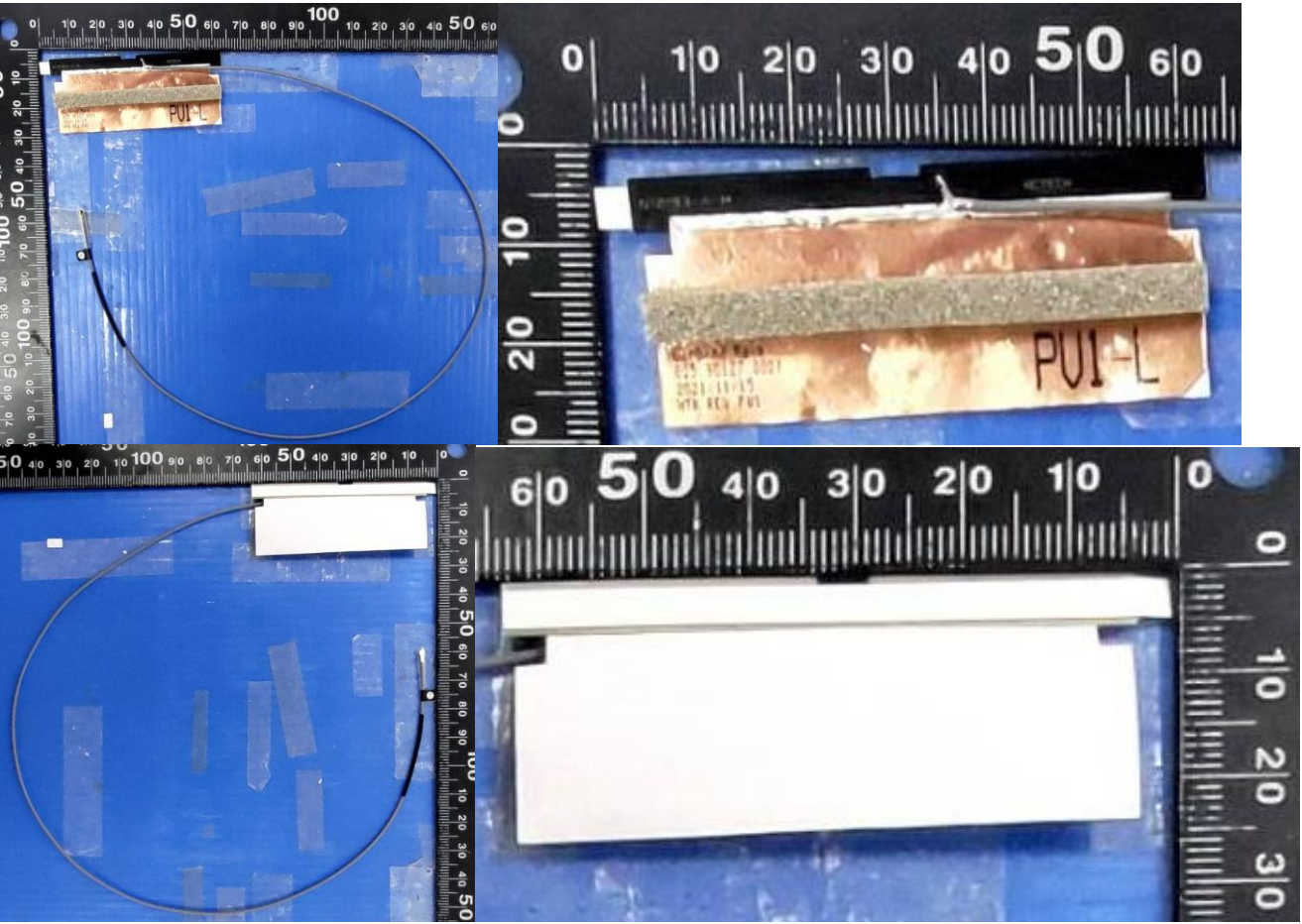


Include a dimensioned photo and dimensioned drawing of Tx2 (or Rx2) antenna here.

Tx2 (or Rx2) Antenna Dimensioned Drawing:



Tx2 (or Rx2) Antenna Photo:

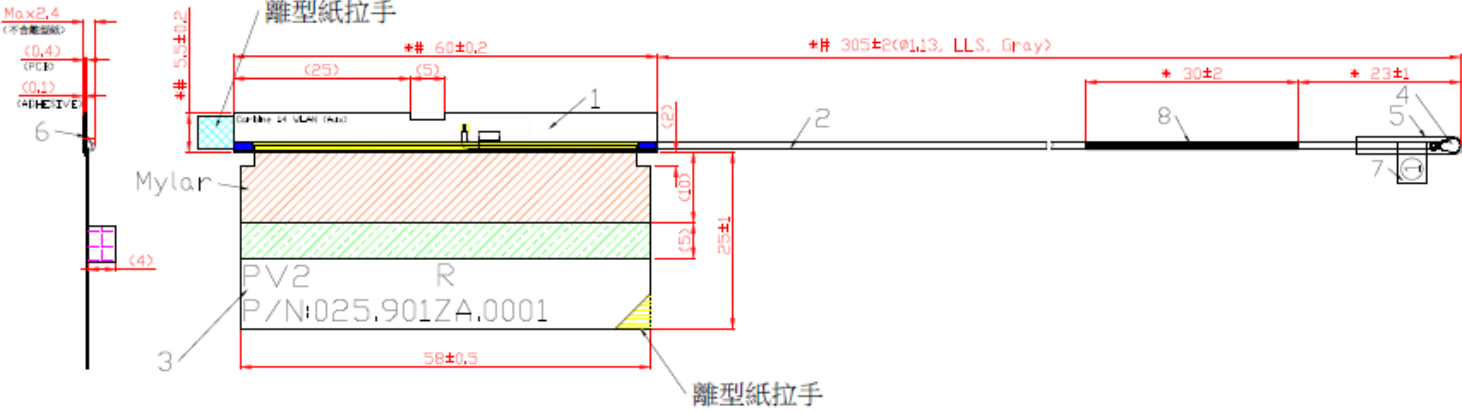


Note: antenna photo should include L type ruler

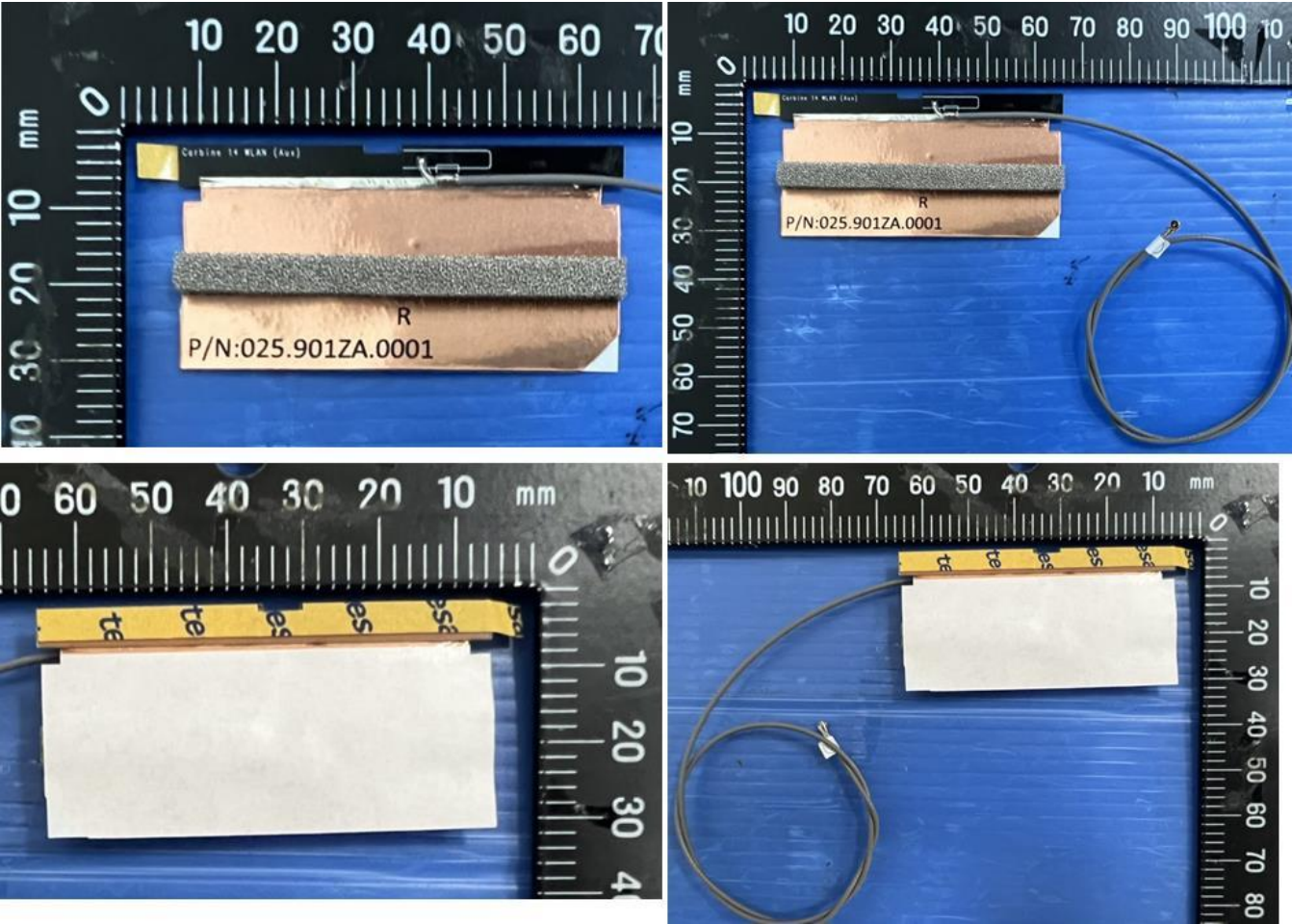
Section 2. Dimensioned Photos or Drawings of Antennas

Include a dimensioned photo and dimensioned drawing of Tx1 antenna here.

Tx1 Antenna Dimensioned Drawing:

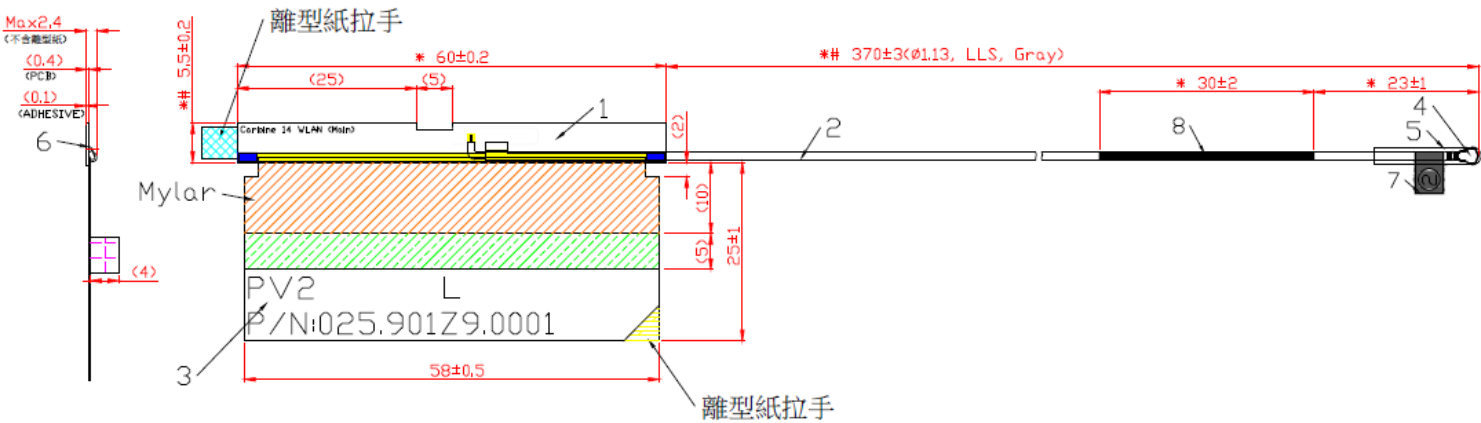


Tx1 Antenna Photo:

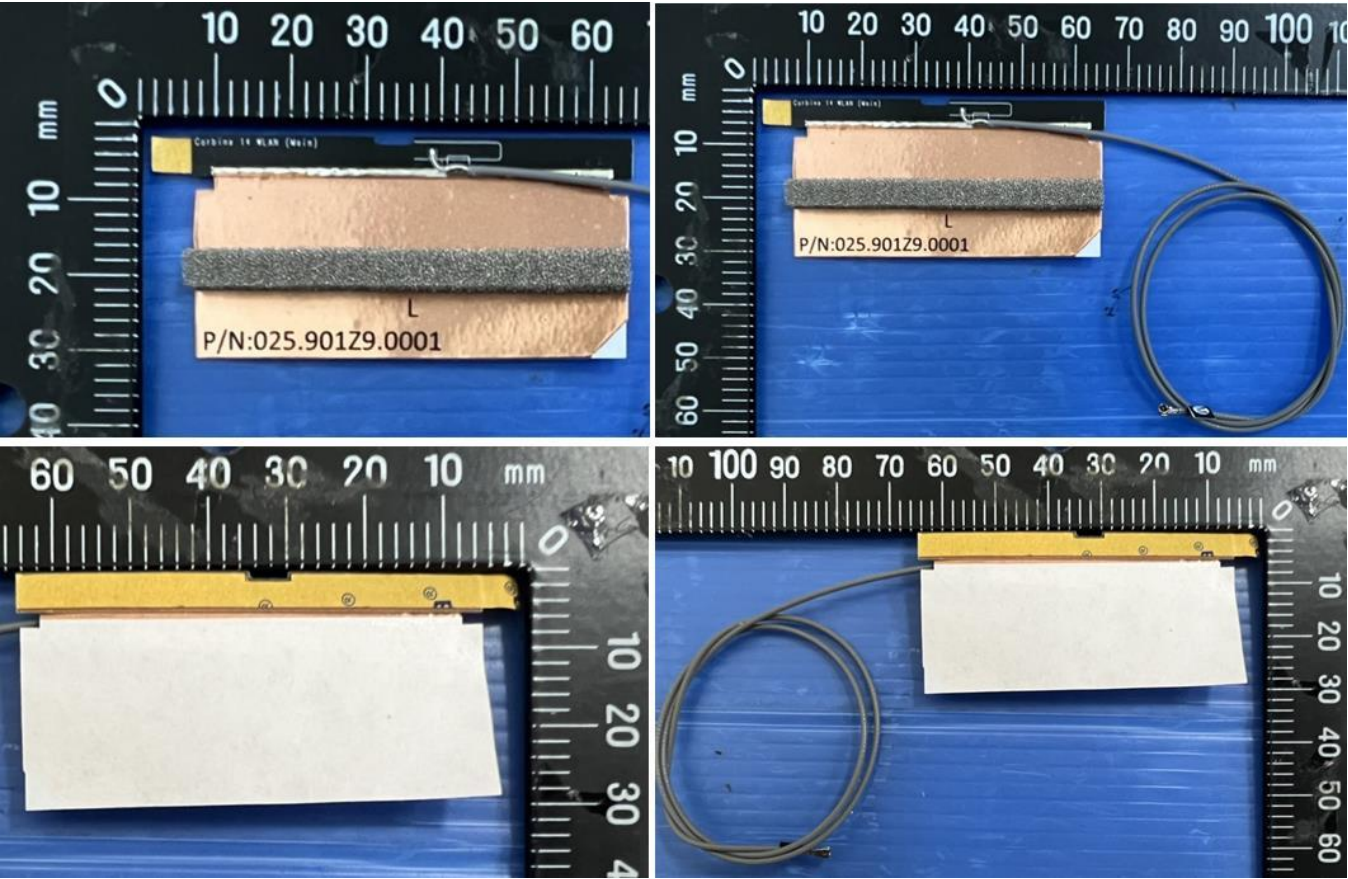


Include a dimensioned photo and dimensioned drawing of Tx2 (or Rx2) antenna here.

Tx2 (or Rx2) Antenna Dimensioned Drawing:



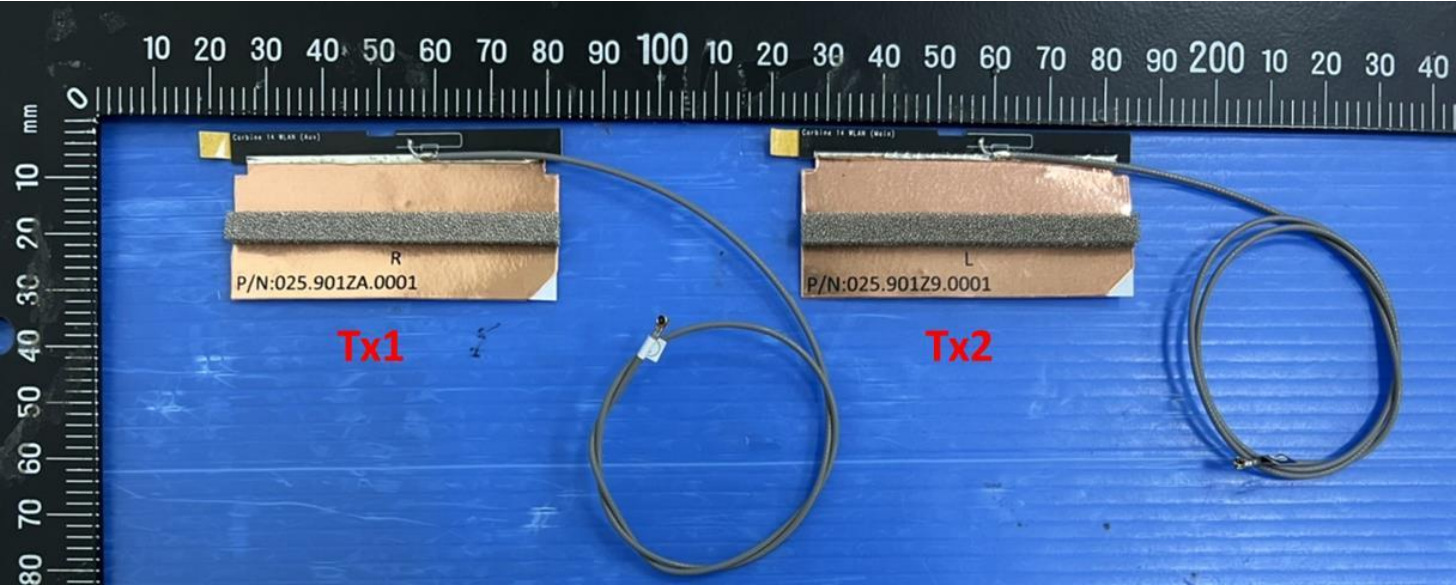
Tx2 (or Rx2) Antenna Photo:



Note: antenna photo should include L type ruler

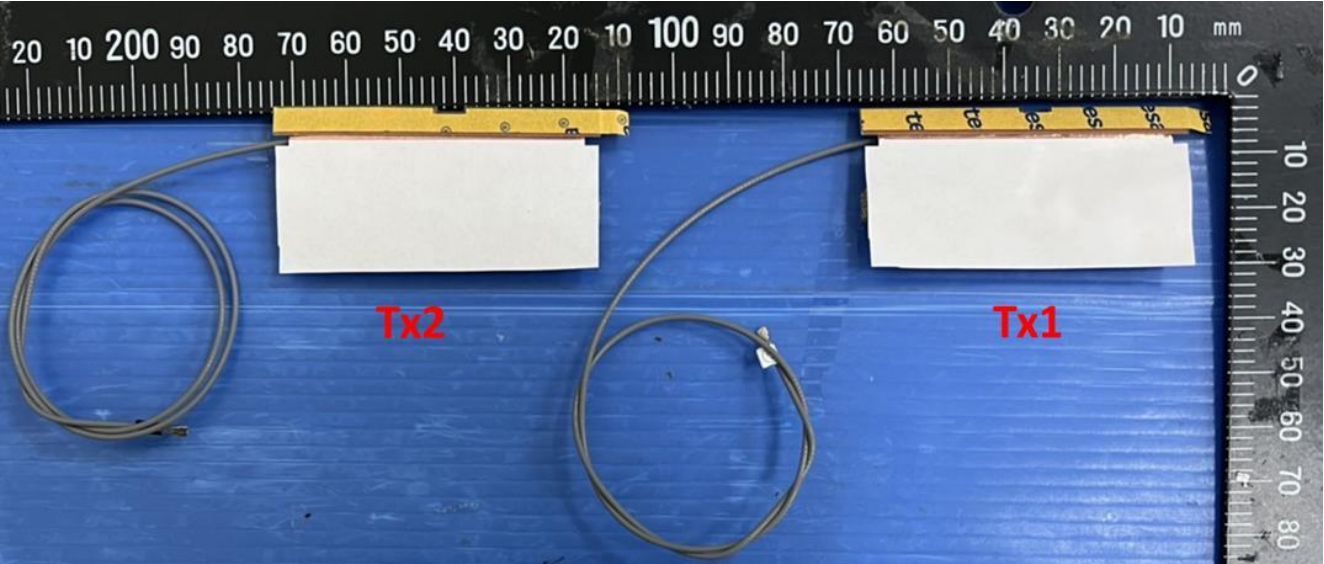
Include front view photo of all 3 antennas here.

Antenna Manufacturer: INPAQ
Antenna Part Number: 025.901ZA.0001(WA-P-LE-02-056) (Tx1), 025.901Z9.0001(WA-P-LE-02-055) (Tx2 or Rx2)



Include back view photo of all 3 antennas here.

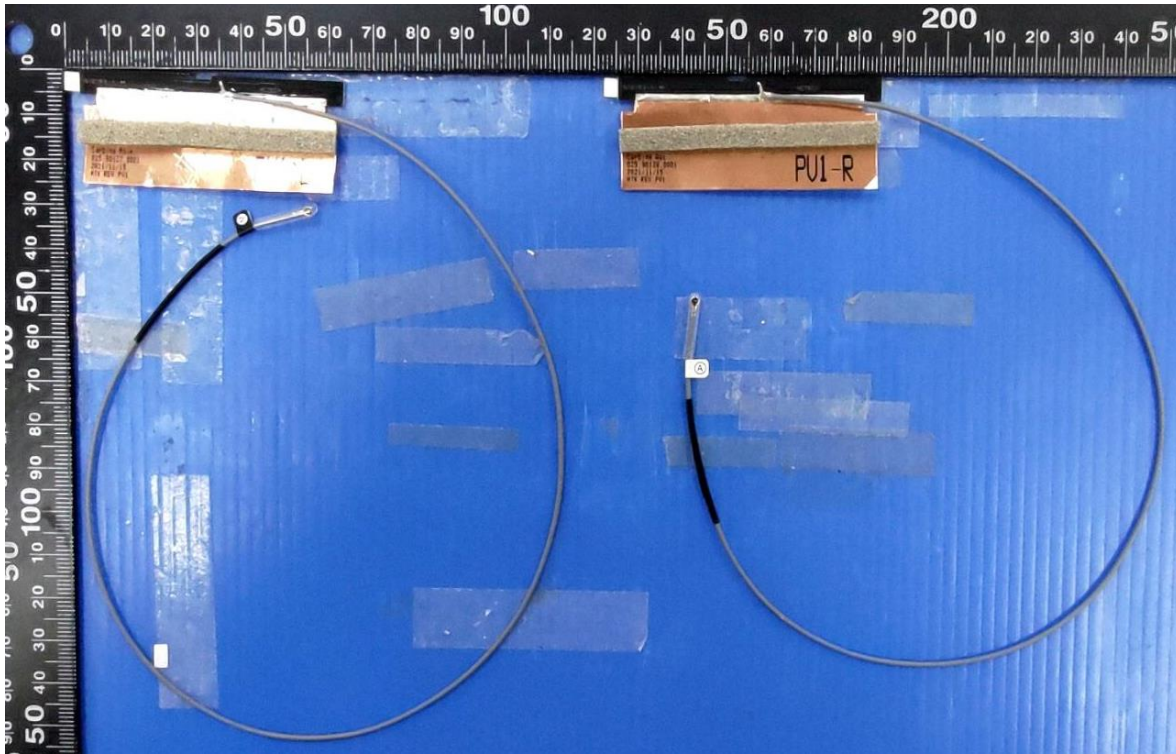
Antenna Manufacturer: INPAQ
Antenna Part Number: 025.901ZA.0001(WA-P-LE-02-056) (Tx1), 025.901Z9.0001(WA-P-LE-02-055) (Tx2 or Rx2)



Include front view photo of all 2 antennas here.

Antenna Manufacturer: High-Tek Electronics Co., Ltd

Antenna Part Number: 025.901Z8.0001 (Tx1), 025.901Z7.0001 (Tx2 or Rx2)



Note: antenna photo should include L type ruler

Include back view photo of all 2 antennas here.

Antenna Manufacturer: High-Tek Electronics Co., Ltd

Antenna Part Number: 025.901Z8.0001 (Tx1), 025.901Z7.0001 (Tx2)

