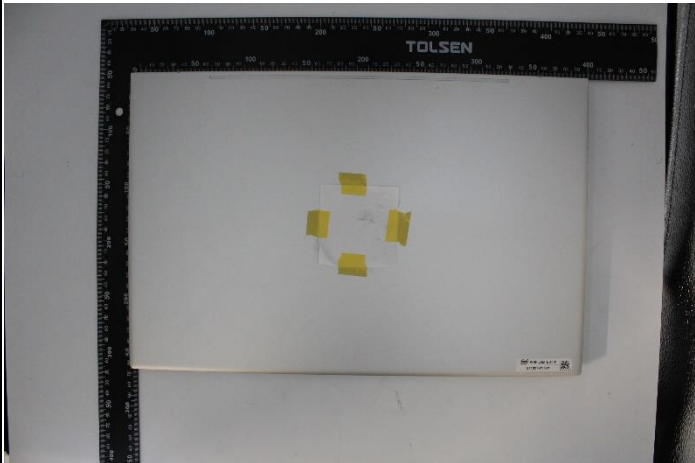







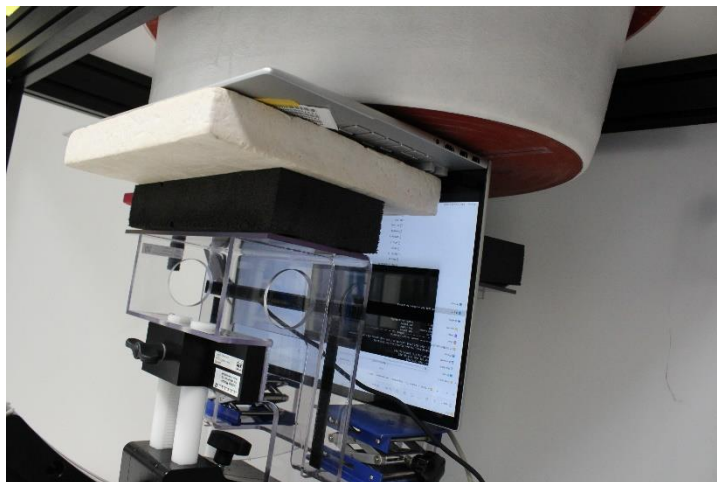
# Annex F. Photographs

## F.1 Test Sample

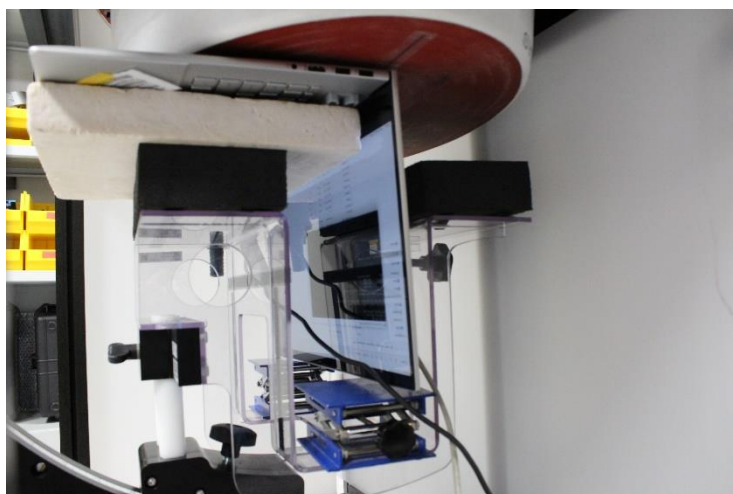
<div>Sample Front 211207-01.S01</div> <div></div>	<div>Sample Back 211207-01.S01</div> <div></div>
<div>Sample Laptop Mode 211207-01.S01</div> <div></div>	<div>Sample Laptop Mode 211207-01.S03</div> <div></div>
<div>Sample Front 211207-01.S03</div> <div></div>	<div>Sample Back 211207-01.S03</div> <div></div>

## F.2 Test positions

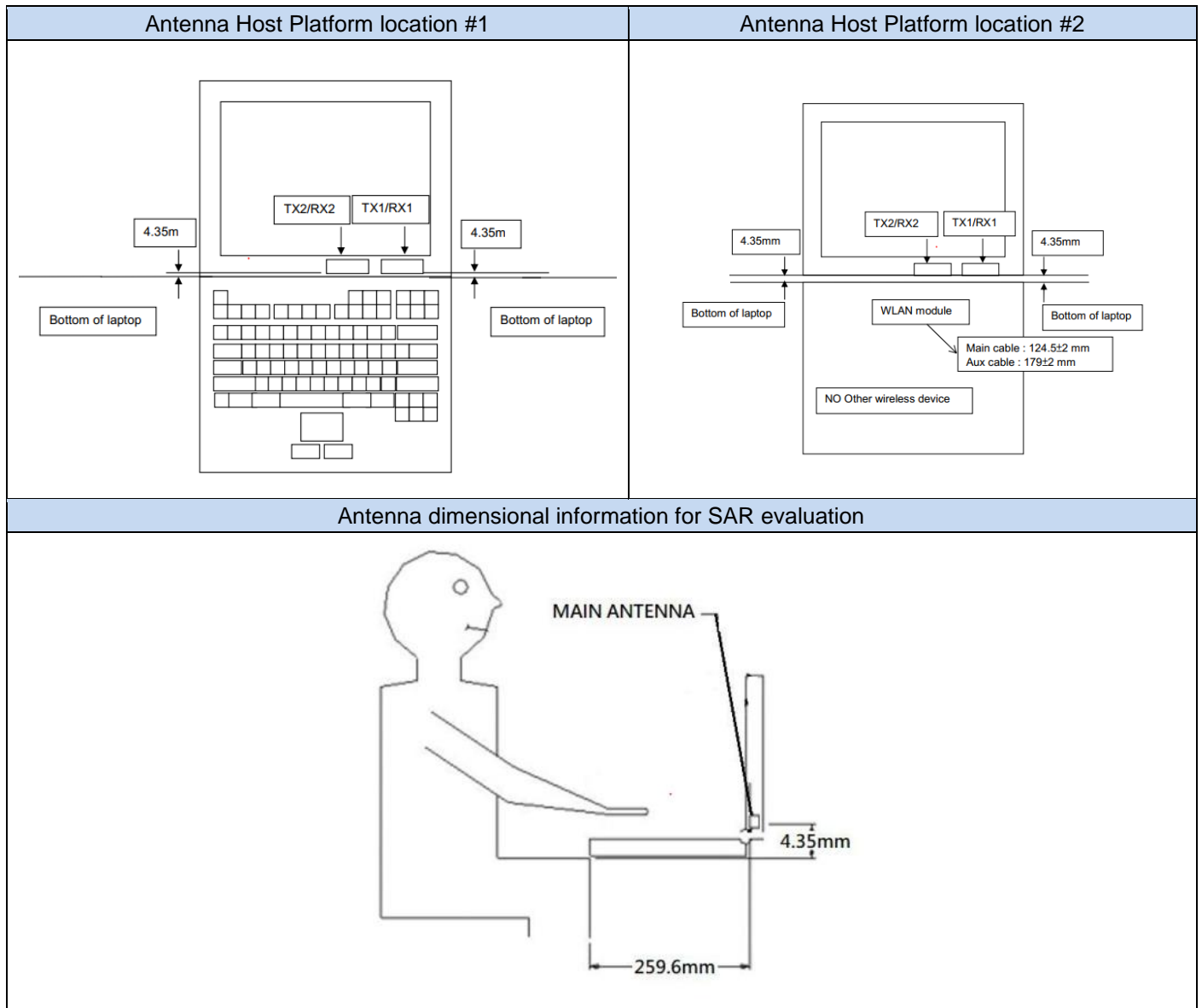
Laptop



Laptop – Side view

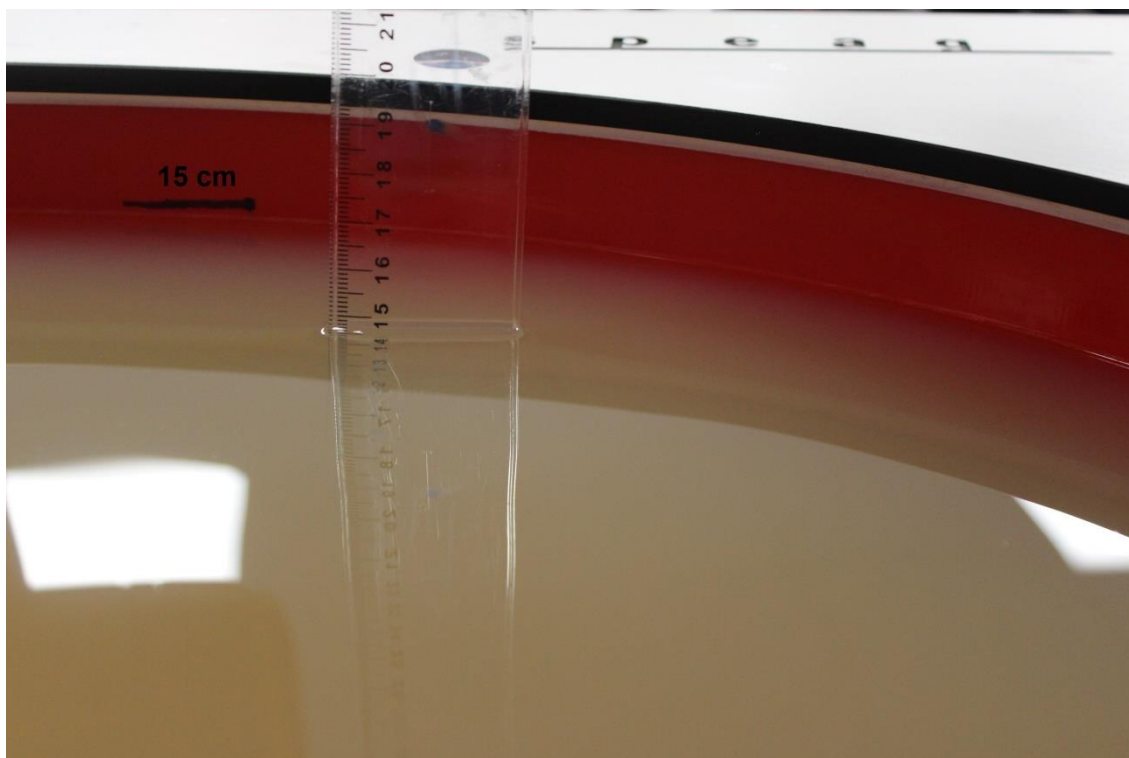


F.3      **Antenna host platform location and adjacent edge positions relative to the body (provided by the customer)**



#### F.4 Phantom liquid level during measurements

ELI phantom Body liquid SAR Dasy SPEAG – 180206-04 - MBBL600-6000V6 Batch -1



### **End of the report**

**This page is intentionally left blank and marks the last page of the test report.**