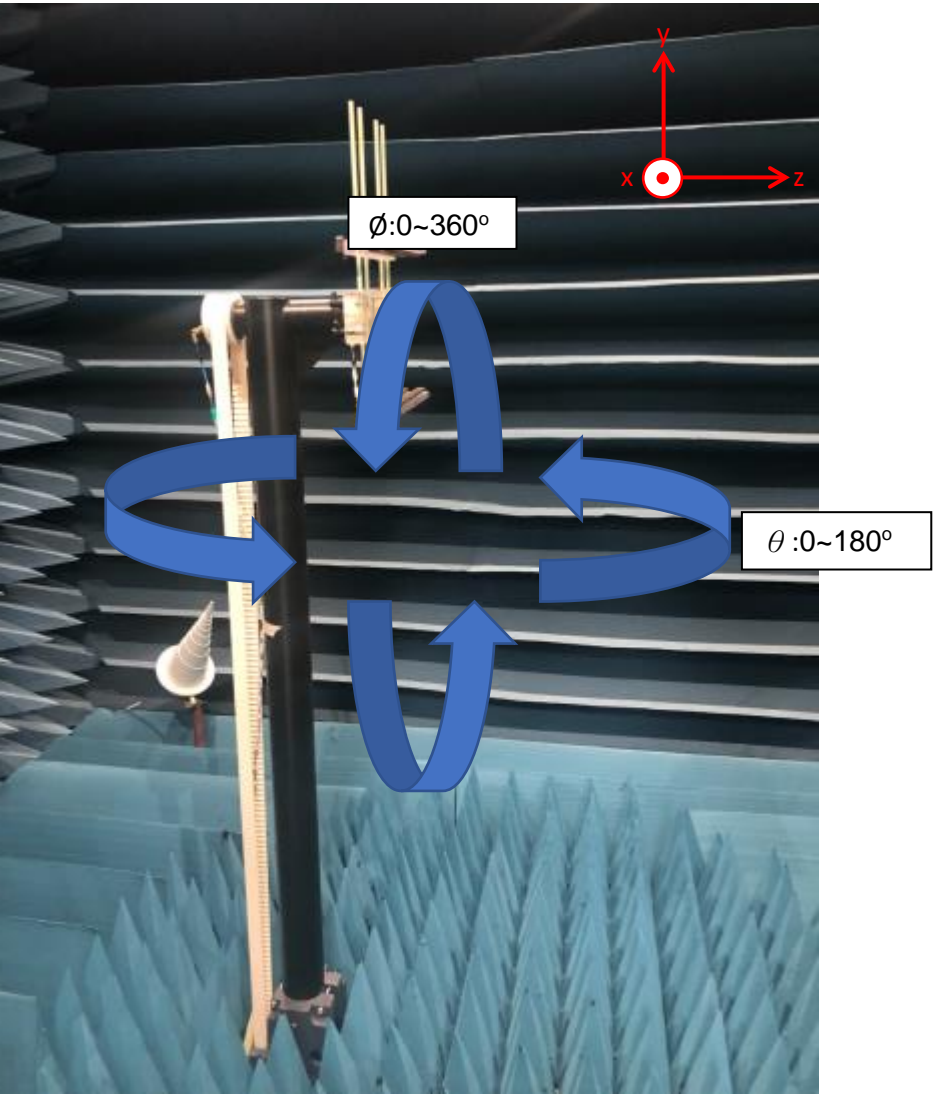


3. Setup photo

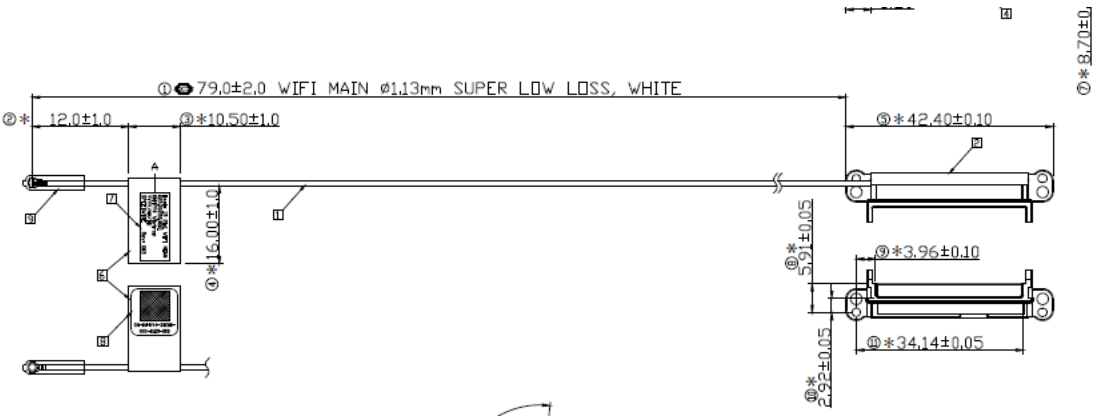
Test Conditions

- NB under test placed on a non-conductive structure at sufficient height to be in the ‘quiet zone’ of the chamber
- The NB under test must be fully populated with a power, motherboard, hard drive, disk drives, etc... The purpose is to characterize the antennas on a fully populated customer deliverable unit.
- NB’s panel should be parallel with XY-plane and face to Y-axe, see diagram below.

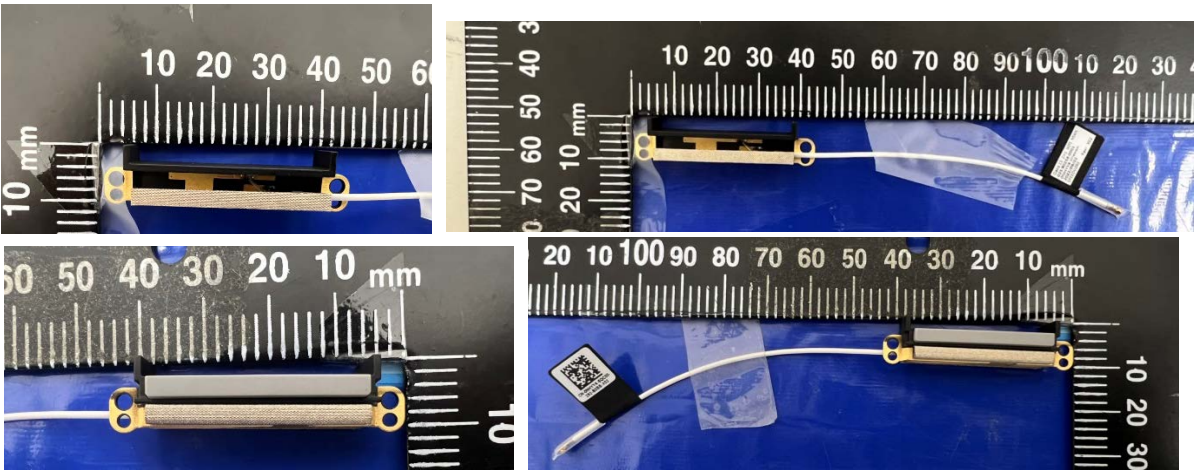


Section 2. Dimensioned Photos and Drawings of Antennas
Include the dimensioned photo and drawing of Main antenna here.

Main Antenna Drawing:



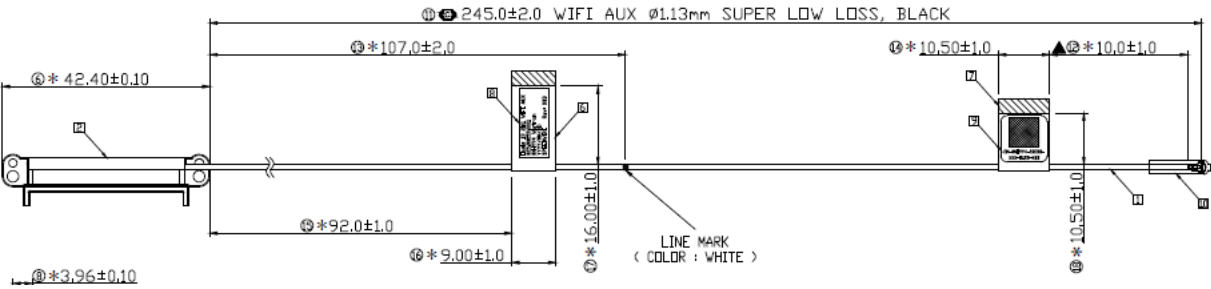
Main Antenna Photo (Front/Back):



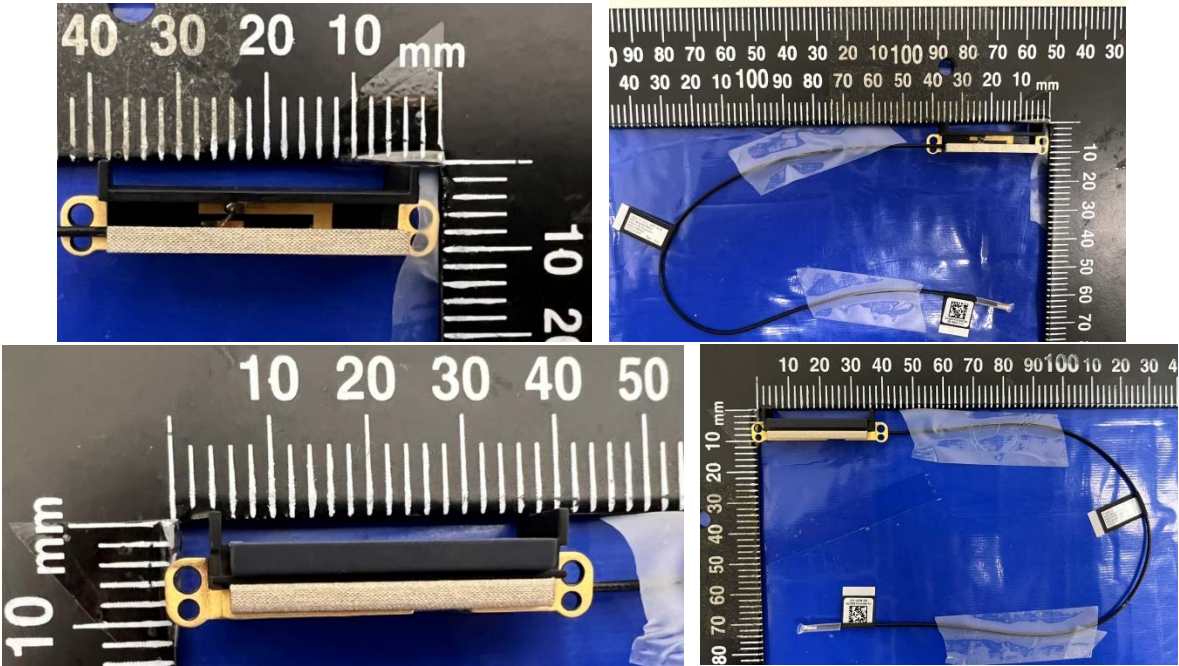
Note: antenna photo should include L type ruler

Include the dimensioned photo and drawing of Aux antenna here.

Aux Antenna Drawing:



Aux Antenna Photo (Front/Back):



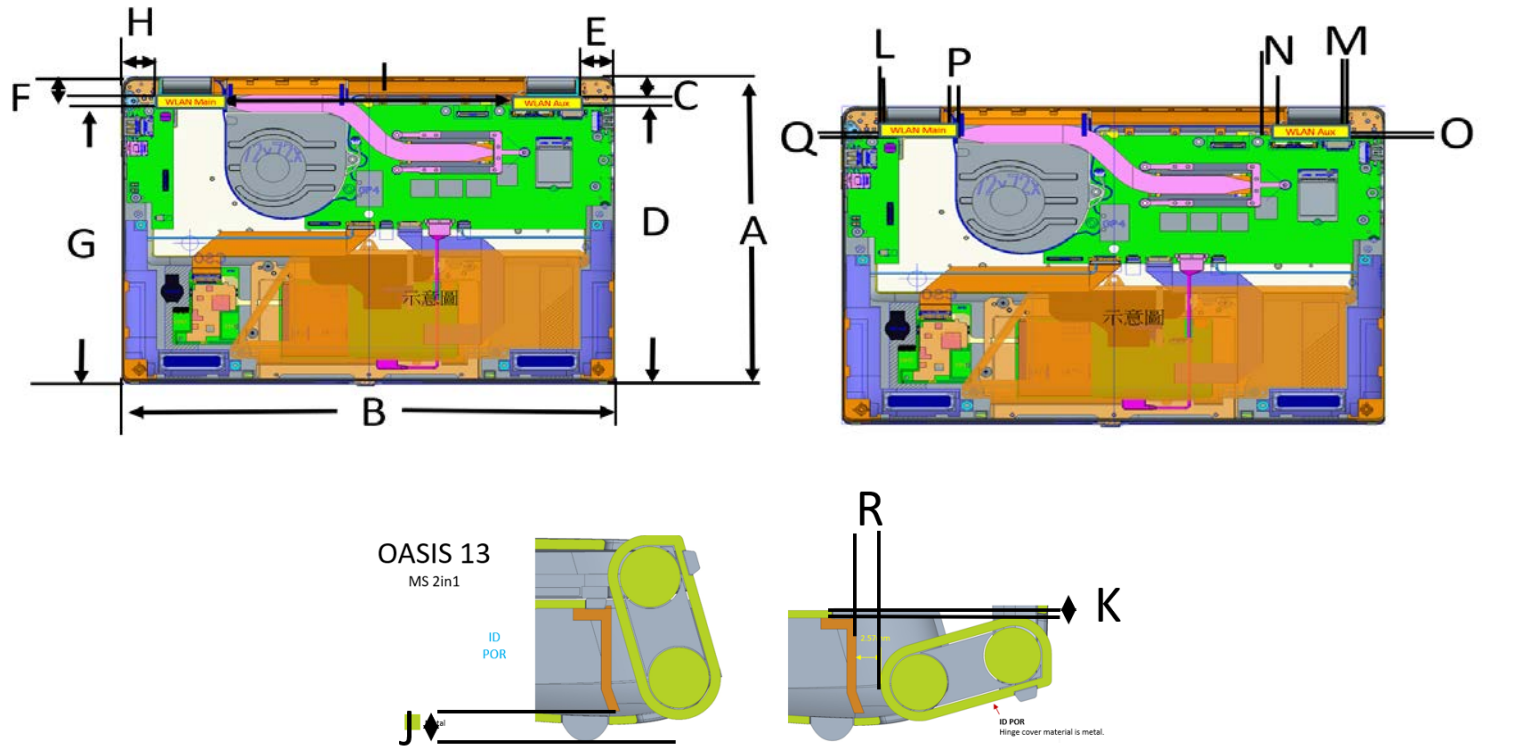
Note: antenna photo should include L type ruler

Section 4. Antenna Host Platform Location Information

Include a **dimensioned photo(s) or dimensioned drawing(s)** of Main and Aux antenna placements (measurements are not required for receive-only antenna).

Any antenna that transmits must show dimensions to bottom of laptop. Provide a description of the materials that are used for supporting or surrounding transmit antennas; for example, non-conductive plastics vs. conductive coated plastic or metallic materials.

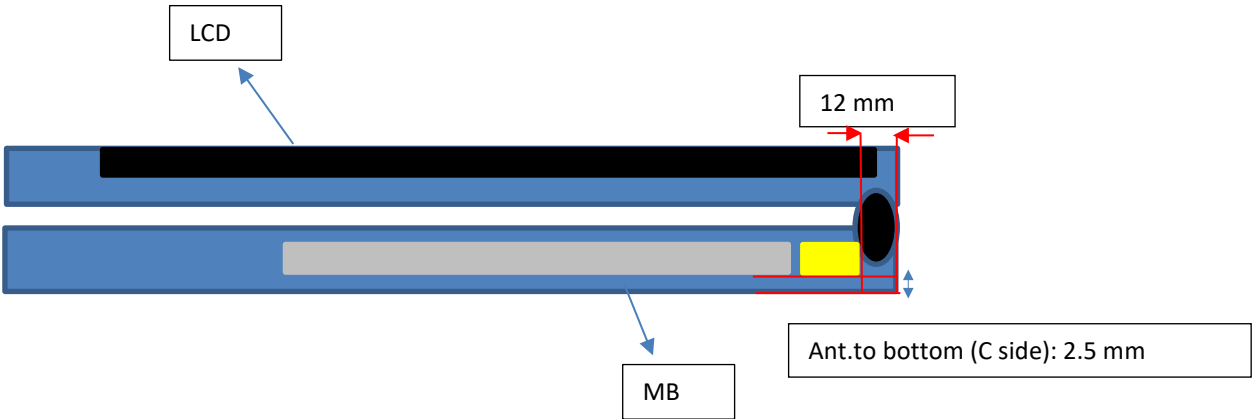
NB mode



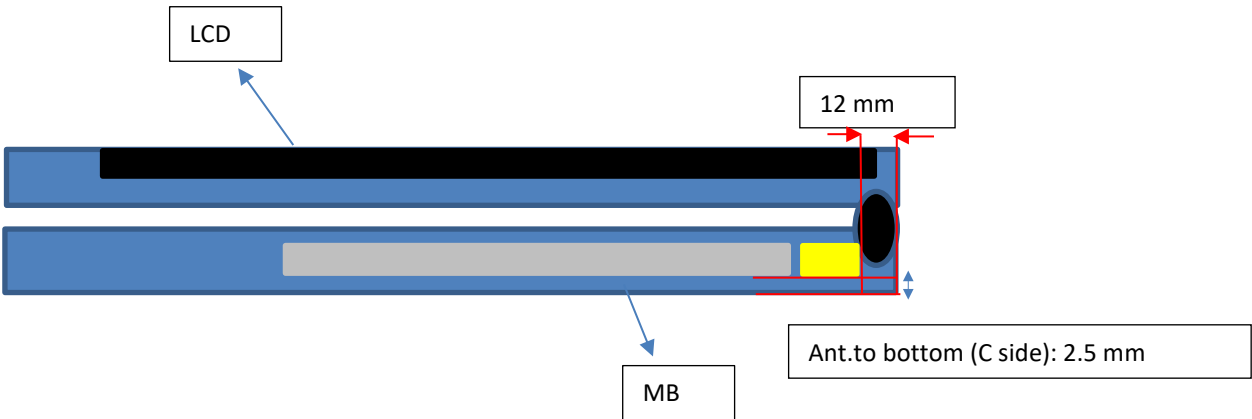
| Item | Location | distance |
|------|---------------------------|----------|
| A | SYSTEM Y | 211.76 |
| B | SYSTEM X | 300.99 |
| C | WLAN-main to edge | 12 |
| D | WLAN-main to edge | 192.61 |
| E | WLAN-main to edge | 23.5 |
| F | WLAN-aux to edge | 12 |
| G | WLAN-aux to edge | 192.61 |
| H | WLAN-aux to edge | 23.5 |
| I | WLAN-aux to WLAN-main | 186.6 |
| J | WLAN to table | 4.3 |
| K | WLAN to C cover | 2.5 |
| L | WLAN to metal | 2.3 |
| M | WLAN to metal | 2.3 |
| N | WLAN to metal (EDP cable) | 3.3 |
| O | WLAN to metal (MB) | 0.25 |
| P | WLAN to metal (ANT cable) | 3.34 |
| Q | WLAN to metal (MB) | 0.25 |
| R | WLAN to metal (Hinge cap) | 1.89 |

TB mode

WLAN Main/Tx1

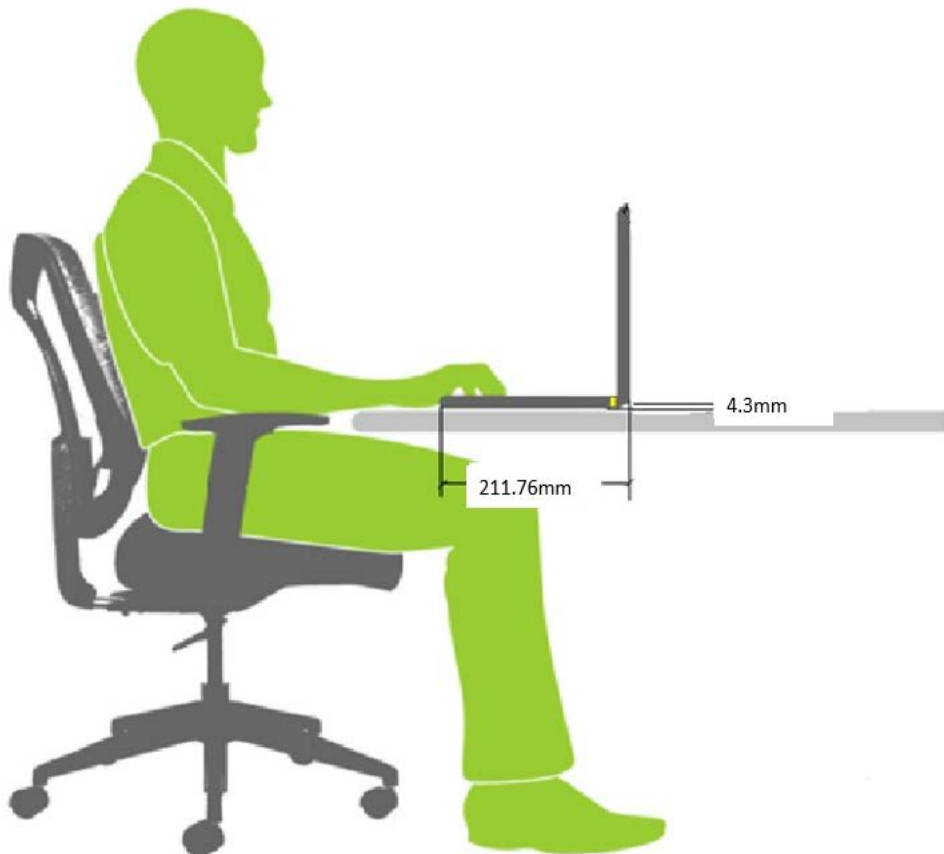


WLAN AUX/Tx2



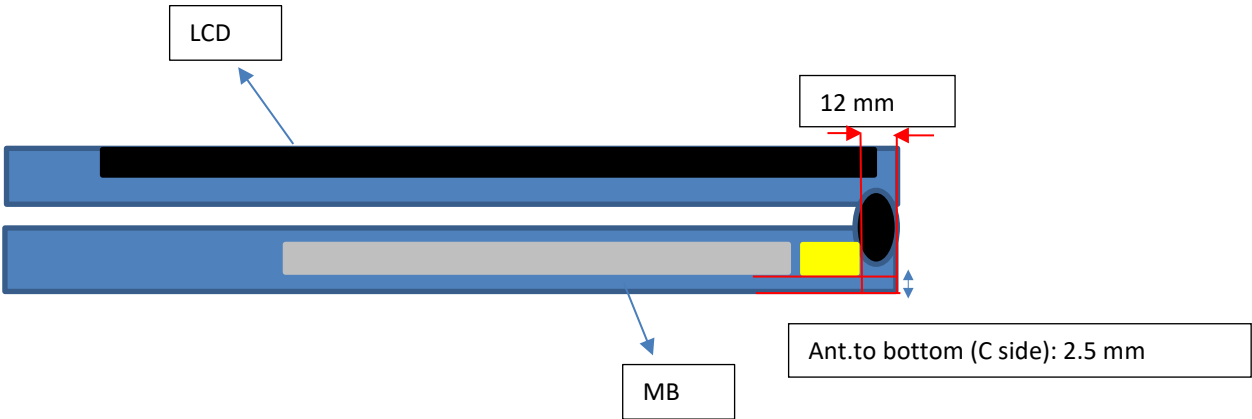
Section 5. Antenna dimensional information for SAR evaluation

Include a **dimensioned photo(s) or dimensioned drawing(s)** showing the distance (mm) between the transmit antennas and the user. For notebook/laptop hosts show lapheld position (example below). For tablet hosts show all orientations including lapheld, primary & secondary portrait, primary & secondary landscape positions. Include a description of any proximity sensors or power throttling implementations that limit or exclude use of any host orientation.



TB mode

WLAN Main/Tx1



WLAN AUX/Tx2

