



# TEST REPORT

## KCTL Inc.

65, Sinwon-ro, Yeongtong-gu,  
Suwon-si, Gyeonggi-do, 16677, Korea  
TEL: 82-31-285-0894 FAX: 82-505-299-8311  
[www.kctl.co.kr](http://www.kctl.co.kr)

Report No.:  
KR21-SPF0057  
Page (1) of (107)

# KCTL

### 1. Client

- Name : Intel Mobile Communications
- Address : 100 Center Point Circle, Suite 200 Columbia, South Carolina 29210 USA
- Date of Receipt : 2021-07-15

2. Use of Report : Class II Permissive Change

3. Name of Product and Model : WLAN and BT, 2x2 PCIe M.2 1216 SD adapter card

- Model Number : AX210D2W
- Manufacturer and Country of Origin: Intel Mobile Communications / USA

4. Host Product Name : Notebook PC

- Host Model Name : NP950XDC
- Manufacturer : Samsung Electronics Co., Ltd.

5. FCC ID Number : PD9AX210D2

6. Date of Test : 2021-08-20 ~ 2021-08-24

7. Location of Test : ☒ Permanent Testing Lab ☐ On Site Testing  
(Address: 65, Sinwon-ro, Yeongtong-gu, Suwon-si, Gyeonggi-do, 16677, Korea)

8. Test Standards : IEEE 1528-2013, KDB Publication


9. Test Results : Refer to the test result in the test report

Affirmation	Tested by	Technical Manager
	Name : Mungi Jeong (Signature)	Name : Jongwon Ma (Signature)

2021-09-01

## KCTL Inc.

As a test result of the sample which was submitted from the client, this report does not guarantee the whole product quality. This test report should not be used and copied without a written agreement by KCTL Inc.

<b>KCTL Inc.</b> 65, Sinwon-ro, Yeongtong-gu, Suwon-si, Gyeonggi-do, 16677, Korea TEL: 82-31-285-0894 FAX: 82-505-299-8311 <a href="http://www.kctl.co.kr">www.kctl.co.kr</a>	Report No.: <b>KR21-SPF0057</b> Page (2) of (107)	
---	---	---

## REPORT REVISION HISTORY

Date	Revision	Page No
2021-09-01	Originally issued	-

*This report shall not be reproduced except in full, without the written approval of KCTL Inc. This document may be altered or revised by KCTL Inc. personnel only, and shall be noted in the revision section of the document. Any alteration of this document not carried out by KCTL Inc. will constitute fraud and shall nullify the document. This test report is a general report that does not use the KOLAS accreditation mark and is not related to KS Q ISO/IEC 17025 and KOLAS accreditation.*

## General remarks for test reports

### Statement concerning the uncertainty of the measurement systems used for the tests

(may be required by the product standard or client)

☐ Internal procedure used for type testing through which traceability of the measuring uncertainty has been established:

### Procedure number, issue date and title:


Calculations leading to the reported values are on file with the testing laboratory that conducted the testing.

☒ Statement not required by the standard or client used for type testing

1. Identification when information is provided by the customer: Information marked " #" is provided by the customer. - Disclaimer: This information is provided by the customer and can affect the validity of results.

## CONTENTS

1. General information.....	4
2. Device information .....	5
3. Specific Absorption Rate .....	10
4. SAR Test Methods and Procedures.....	12
5. RF Exposure Limits .....	13
6. RF Average Conducted Output Power.....	14
7. System Verification .....	15
8. SAR Test Results .....	18
9. Power Density Test Results .....	20
10. Simultaneous Transmission .....	21
11. SAR Measurement Variability.....	22
12. Measurement Uncertainty.....	23
13. Test Equipment Information .....	25
14. Test System Verification and Test Results.....	26
Appendixes List.....	47
Appendix A. Calibration certificate .....	48
Appendix B. SAR Tissue Specification.....	104
Appendix C. #Antenna Location & Distance .....	105
Appendix D. EUT Photo .....	106
Appendix E. Test Setup Photo.....	107
End of test report .....	107

<b>KCTL Inc.</b> 65, Sinwon-ro, Yeongtong-gu, Suwon-si, Gyeonggi-do, 16677, Korea TEL: 82-31-285-0894 FAX: 82-505-299-8311 <a href="http://www.kctl.co.kr">www.kctl.co.kr</a>	Report No.: <b>KR21-SPF0057</b> Page (4) of (107)	
---	---	---

## 1. General information

Client : Intel Mobile Communications  
 Address : 100 Center Point Circle, Suite 200 Columbia, South Carolina 29210 USA  
 Manufacturer : Intel Mobile Communications  
 Address : 100 Center Point Circle, Suite 200 Columbia, South Carolina 29210 USA  
 Contact Person : Steven Hackett / Steven.c.hackett@intel.com  
 Laboratory : KCTL Inc.  
 Address : 65, Sinwon-ro, Yeongtong-gu, Suwon-si, Gyeonggi-do, 16677, Korea  
 Accreditations : FCC Site Designation No: KR0040, FCC Site Registration No: 687132  
                           VCCI Registration No. : R-3327, G-198, C-3706, T-1849  
                           CAB Identifier: KR0040, ISED Number: 8035A  
                           KOLAS No.: KT231

### 1.1 Report Overview

This report details the results of testing carried out on the samples listed in section 2, the results contained in this test report do not relate to other samples of the same product. The manufacturer should ensure that all products in series production are in conformity with the product sample detailed in this report.

This report may only be reproduced and distributed in full. If the product in this test report is used in any configuration other than that detailed in the test report, the manufacturer must ensure the new configuration complies with all relevant standards and certification requirements. Any mention of KCTL Inc. Wireless lab or testing done by KCTL Inc. Wireless lab made in connection with the distribution or use of the tested product must be approved in writing by KCTL Inc. Wireless lab.

## 2. Device information

### 2.1 Basic description

Product Name		WLAN and BT, 2x2 PCIe M.2 1216 SD adapter card
Product Model Number		AX210D2W
Product Manufacturer		Intel Mobile Communications
Host Product Name		Notebook PC
Host Model Number		NP950XDC
Host Manufacturer		Samsung Electronics Co., Ltd.
Host Product Serial Number	Radiation	1HPB91ZR200023P
		1GH591ZR100119F
	Conduction	1HPB91ZR200023P
Mode of Operation		WLAN 802.11a,n,ac,ax
Device Overview		U-NII-5: 5 955.0 MHz ~ 6 415.0 MHz U-NII-6: 6 435.0 MHz ~ 6 515.0 MHz U-NII-7: 6 535.0 MHz ~ 6 855.0 MHz U-NII-8: 6 875.0 MHz ~ 7 115.0 MHz

Note 1: WLAN 2.4 GHz, 5 GHz & Bluetooth Information refer to the legacy report. (KR21-SPF0007)

### 2.2 Summary of Test Results

Band	Highest Reported	
	SAR 1g (W/kg)	PD 4cm <sup>2</sup> (W/m <sup>2</sup> )
U-NII-5	0.92	7.24
U-NII-6	1.03	6.83
U-NII-7	<b>1.19</b>	<b>7.30</b>
U-NII-8	0.93	7.03

**2.3 #Maximum Tune-up power**

This device operates using the following maximum output power specifications. SAR values were scaled to the maximum allowed power to determine compliance per KDB Publication 447498 D01v06.

**2.3.1 #Maximum WLAN Output Power**

Band	Ant.	Mode	Channel	Output Power (dB m)		
				Target	Max. Allowed	SAR Test
U-NII-5, U-NII-6	Main, Aux	802.11a	All Channel	4.50	<b>5.50</b>	No
		802.11n (HT20)	All Channel	4.50	<b>5.50</b>	No
		802.11n (HT40)	All Channel	7.75	<b>8.75</b>	No
		802.11ac (VHT20)	All Channel	4.50	<b>5.50</b>	No
		802.11ac (VHT40)	All Channel	7.75	<b>8.75</b>	No
		802.11ac (VHT80)	All Channel	10.25	<b>11.25</b>	No
		802.11ac (VHT160)	All Channel	13.00	<b>14.00</b>	No
		802.11ax SU 20 MHz	All Channel	4.50	<b>5.50</b>	No
		802.11ax SU 40 MHz	All Channel	7.75	<b>8.75</b>	No
		802.11ax SU 80 MHz	All Channel	10.25	<b>11.25</b>	No
		802.11ax SU 160 MHz	All Channel	13.00	<b>14.00</b>	Yes
		802.11ax RU 26T	All Channel	-4.00	<b>-3.00</b>	No
		802.11ax RU 52T	All Channel	-1.00	<b>0.00</b>	No
		802.11ax RU 106T	All Channel	2.00	<b>3.00</b>	No
		802.11ax RU 242T	All Channel	4.50	<b>5.50</b>	No
		802.11ax RU 484T	All Channel	7.75	<b>8.75</b>	No
		802.11ax RU 996T	All Channel	10.25	<b>11.25</b>	No
	MIMO	802.11a	All Channel	2.00	<b>3.00</b>	No
		802.11n (HT20)	All Channel	2.00	<b>3.00</b>	No
		802.11n (HT40)	All Channel	5.00	<b>6.00</b>	No
		802.11ac (VHT20)	All Channel	2.00	<b>3.00</b>	No
		802.11ac (VHT40)	All Channel	5.00	<b>6.00</b>	No
		802.11ac (VHT80)	All Channel	7.50	<b>8.50</b>	No
		802.11ac (VHT160)	All Channel	10.50	<b>11.50</b>	No
		802.11ax SU 20 MHz	All Channel	2.00	<b>3.00</b>	No
		802.11ax SU 40 MHz	All Channel	5.00	<b>6.00</b>	No
		802.11ax SU 80 MHz	All Channel	7.50	<b>8.50</b>	No
		802.11ax SU 160 MHz	All Channel	10.50	<b>11.50</b>	Yes
		802.11ax RU 26T	All Channel	-6.50	<b>-5.50</b>	No
		802.11ax RU 52T	All Channel	-3.50	<b>-2.50</b>	No
		802.11ax RU 106T	All Channel	-0.50	<b>0.50</b>	No
		802.11ax RU 242T	All Channel	2.00	<b>3.00</b>	No
		802.11ax RU 484T	All Channel	5.00	<b>6.00</b>	No
		802.11ax RU 996T	All Channel	7.50	<b>8.50</b>	No



**KCTL Inc.**

65, Sinwon-ro, Yeongtong-gu,  
Suwon-si, Gyeonggi-do, 16677, Korea  
TEL: 82-31-285-0894 FAX: 82-505-299-8311  
[www.kctl.co.kr](http://www.kctl.co.kr)

Report No.:  
KR21-SPF0057  
Page (7) of (107)



Band	Ant.	Mode	Channel	Output Power (dB m)		
				Target	Max. Allowed	SAR Test
U-NII-7	Main, Aux	802.11a	All Channel	3.75	4.75	No
		802.11n (HT20)	All Channel	3.75	4.75	No
		802.11n (HT40)	115	7.75	8.75	No
			Except 115	7.00	8.00	
		802.11ac (VHT20)	All Channel	3.75	4.75	No
		802.11n (HT40)	115	7.75	8.75	No
			Except 115	7.00	8.00	
		802.11ac (VHT80)	All Channel	9.50	10.50	No
		802.11ac (VHT160)	All Channel	12.25	13.25	No
		802.11ax SU 20 MHz	All Channel	3.75	4.75	No
		802.11ax SU 40 MHz	115	7.75	8.75	No
			Except 115	7.00	8.00	
		802.11ax SU 80 MHz	All Channel	9.50	10.50	No
		802.11ax SU 160 MHz	All Channel	12.25	13.25	Yes
		802.11ax RU 26T	115	-4.00	-3.00	No
			Except 115	-4.75	-3.75	
		802.11ax RU 52T	115	-1.00	0.00	No
			Except 115	-1.75	-0.75	
		802.11ax RU 106T	115	2.00	3.00	No
			Except 115	1.25	2.25	
		802.11ax RU 242T	115	4.50	5.50	No
			Except 115	3.75	4.75	
		82.11ax RU 484T	115	7.75	8.75	No
			Except 115	7.00	8.00	
		802.11ax RU 996T	All Channel	9.50	10.50	No
	MIMO	802.11a	All Channel	1.00	2.00	No
		802.11n (HT20)	All Channel	1.00	2.00	No
		802.11n (HT40)	115	5.00	6.00	No
			Except 115	4.50	5.50	
		802.11ac (VHT20)	All Channel	1.00	2.00	No
		802.11ac (VHT40)	115	5.00	6.00	No
			Except 115	4.50	5.50	
		802.11ac (VHT80)	All Channel	7.00	8.00	No
		802.11ac (VHT160)	All Channel	9.50	10.50	No
		802.11ax SU 20 MHz	All Channel	1.00	2.00	No
		802.11ax SU 40 MHz	115	5.00	6.00	No
			Except 115	4.50	5.50	
		802.11ax SU 80 MHz	All Channel	7.00	8.00	No
		802.11ax SU 160 MHz	All Channel	9.50	10.50	Yes
		802.11ax RU 26T	115	-6.50	-5.50	No
			Except 115	-7.50	-6.50	
		802.11ax RU 52T	115	-3.50	-2.50	No
			Except 115	-4.50	-3.50	
		802.11ax RU 106T	115	-0.50	0.50	No
			Except 115	-1.50	-0.50	
		802.11ax RU 242T	115	2.00	3.00	No
			Except 115	1.00	2.00	
		82.11ax RU 484T	115	5.00	6.00	No
			Except 115	4.50	5.50	
		802.11ax RU 996T	All Channel	7.00	8.00	No

This test report shall not be reproduced, except in full, without the written approval

**KCTL Inc.**

65, Sinwon-ro, Yeongtong-gu,  
Suwon-si, Gyeonggi-do, 16677, Korea  
TEL: 82-31-285-0894 FAX: 82-505-299-8311  
[www.kctl.co.kr](http://www.kctl.co.kr)

Report No.:  
KR21-SPF0057  
Page (8) of (107)



Band	Ant.	Mode	Channel	Output Power (dB m)		
				Target	Max. Allowed	SAR Test
U-NII-8	Main, Aux	802.11a	Except 233	3.75	4.75	No
			233	-1.50	-0.50	
		802.11n (HT20)	Except 233	3.75	4.75	No
			233	-1.50	-0.50	
		802.11n (HT40)	All Channel	7.00	8.00	No
		802.11ac (VHT20)	Except 233	3.75	4.75	No
			233	-1.50	-0.50	
		802.11n (HT40)	All Channel	7.00	8.00	No
		802.11ac (VHT80)	All Channel	9.50	10.50	No
		802.11ac (VHT160)	All Channel	12.25	13.25	No
		802.11ax SU 20 MHz	Except 233	3.75	4.75	No
			233	-1.50	-0.50	
		802.11ax SU 40 MHz	All Channel	7.00	8.00	No
		802.11ax SU 80 MHz	All Channel	9.50	10.50	No
		802.11ax SU 160 MHz	All Channel	12.25	13.25	Yes
		802.11ax RU 26T	All Channel	-4.75	-3.75	No
		802.11ax RU 52T	All Channel	-1.75	-0.75	No
		802.11ax RU 106T	All Channel	1.25	2.25	No
	MIMO	802.11a	Except 233	1.00	2.00	No
			233	-5.00	-4.00	
		802.11n (HT20)	Except 233	1.00	2.00	No
			233	-5.00	-4.00	
		802.11n (HT40)	All Channel	4.50	5.50	No
		802.11ac (VHT20)	Except 233	1.00	2.00	No
			233	-5.00	-4.00	
		802.11n (HT40)	All Channel	4.50	5.50	No
		802.11ac (VHT80)	All Channel	7.00	8.00	No
		802.11ac (VHT160)	All Channel	9.50	10.50	No
		802.11ax SU 20 MHz	Except 233	1.00	2.00	No
			233	-5.00	-4.00	
		802.11ax SU 40 MHz	All Channel	4.50	5.50	No
		802.11ax SU 80 MHz	All Channel	7.00	8.00	No
		802.11ax SU 160 MHz	All Channel	9.50	10.50	Yes
		802.11ax RU 26T	All Channel	-7.50	-6.50	No
		802.11ax RU 52T	All Channel	-4.50	-3.50	No
		802.11ax RU 106T	All Channel	-1.50	-0.50	No
		802.11ax RU 242T	Except 233	1.00	2.00	No
			233	-5.00	-4.00	
		802.11ax RU 484T	All Channel	4.50	5.50	No
		802.11ax RU 996T	All Channel	7.00	8.00	No



## 2.4 SAR Test Configurations

### 2.4.1 #DUT Antenna Locations

A diagram showing the location of the device antennas can be found in Appendix C.

Device Type	Band / Ant.	Device Edge for SAR Testing (Front View)					
		Front	Rear	Left Edge	Right Edge	Top	Bottom
Notebook	WLAN 6 GHz	No	Yes	No	No	No	No

### 3. Specific Absorption Rate

#### 3.1 Introduction

The SAR is related to the rate at which energy is absorbed per unit mass in an object exposed to a radio field. The SAR distribution in a biological body is complicated and is usually carried out by experimental techniques or numerical modeling. The standard recommends limits for two tiers of groups, occupational / controlled and general population/uncontrolled, based on a person's awareness and ability to exercise control over his or her exposure. In general, occupational/controlled exposure limits are higher than the limits for general population/uncontrolled.

#### 3.2 SAR Definition

The SAR definition is the time derivative (rate) of the incremental energy (dW) absorbed by (dissipated in) an incremental mass (dm) contained in a volume element (dv) of a given density ( $\rho$ ). The equation description is as below:

$$SAR = \frac{d}{dt} \left( \frac{dW}{dm} \right) = \frac{d}{dt} \left( \frac{dW}{\rho dv} \right)$$

SAR is expressed in units of Watts per kilogram (W/kg)

SAR measurement can be either related to the temperature elevation in tissue by

$$SAR = C \left( \frac{\delta T}{\delta t} \right)$$

Where: C is the specific heat capacity,  $\delta T$  is the temperature rise and  $\delta t$  is the exposure duration, or related to the electrical field in the tissue by

$$SAR = \frac{\sigma |E|^2}{\rho}$$

Where:  $\sigma$  is the conductivity of the tissue,  $\rho$  is the mass density of the tissue and E is the RMS electrical field strength. However for evaluating SAR of low power transmitter, electrical field measurement is typically applied.

### 3.3 Peak Spatially Averaged Power Density Assessment Based on E-field Measurements

Within a short distance from the transmitting source, power density was determined based on both electric and magnetic fields. Generally, the magnitude and phase of two components of either the E-field or H-field were needed on a sufficiently large surface to fully characterize the total E-field and H-field distributions. Nevertheless, solutions based on direct measurement of E-field and H-field can be used to compute power density. The general measurement approach used for this device was:

- a) The local E field on the measurement surface was measured at a reference location where the field is well above the noise level. This reference level was used at the end of this procedure to assess output power drift of the DUT during the measurement.
- b) The electric field on the measurement surface was scanned. Measurements are conducted according to the instructions provided by the measurement system manufacturer. Measurement spatial resolution can depend on the measured field characteristic and measurement methodology used by the system. The planar scan step size was configured at  $\lambda/4$ .
- c) For cDASY6, H-field was calculated from the measured E-field using a reconstruction algorithm. As the power density calculation requires knowledge of both amplitude and phase, reconstruction algorithms can also be used to obtain field information from the measured E-field data (e.g. the phase from the amplitude if only the amplitude is measured). H-field and phase data was reconstructed from repeated measurements (three per measurement point) on two measurement planes separated by  $\lambda/4$ .
- d) The total Peak spatially averaged power density (psPD) distribution on the evaluation surface is determined per the below equation. The spatial averaging area, A, is specified by the applicable exposure limits or regulatory requirements.

$$psPD = \frac{1}{2A_{av}} \iint_{A_{av}} || Re\{E \times H^*\} || dA$$

- e) The maximum spatial-average on the evaluation surface is the final quantity to determine compliance against applicable limits.
- f) The local E field reference value, at the same location as step 2, was re-measured after the scan was complete to calculate the power drift. If the drift deviated by more than 5%, the power density test and drift measurements were repeated.

## 4. SAR Test Methods and Procedures

The tests documented in this report were performed in accordance with IEEE 1528-2013 and the following published KDB procedures:

- TCB Workshop – October 2020 : RF Exposure Policies and Procedures
- SPEAG DASY6 System Handbook (June 2020)
- SPEAG DASY6 Application Note (Interim Procedures for Devices Operating at 6-10 GHz)
- IEEE 1528-2013
- IEC TR 63170:2018
- IEC 62479:2010
- IEC/IEEE 62209-1528:2020
- FCC KDB 865664 D02 v01r02
- FCC KDB 248227 D01 v02r02
- FCC KDB 447498 D01 v06
- FCC KDB 865664 D01 v01r04
- FCC KDB 616217 D04 v01r02

### 4.1 Tested Conditions

The Device was operated utilizing proprietary software and each channel was measured using a broadband power meter to determine the maximum average power.

As per the Interim Procedures for UNII 6-7GHz RF Exposure, explained in RF Exposure Policies and Procedures: TCB Workshop – October 2020, the testing has been performed on SAR following IEC/IEEE 62209-1528:2020 and then on Power Density for the highest SAR test configurations.

The testing has been in both chains and four considered bands U-NII-5, U-NII-6, U-NII-7 and U-NII-8 in SAR mode.

## 5. RF Exposure Limits

### 5.1 RF Exposure Limits for Frequencies Below 6 GHz

**UNCONTROLLED ENVIRONMENTS** are defined as locations where there is the exposure of individuals who have no knowledge or control of their exposure. The general population/uncontrolled exposure limits are applicable to situations in which the general public may be exposed or in which persons who are exposed as a consequence of their employment may not be made fully aware of the potential for exposure or cannot exercise control over their exposure. Members of the general public would come under this category when exposure is not employment-related; for example, in the case of a wireless transmitter that exposes persons in its vicinity.

**CONTROLLED ENVIRONMENTS** are defined as locations where there is exposure that may be incurred by persons who are aware of the potential for exposure, (i.e. as a result of employment or occupation). In general, occupational/controlled exposure limits are applicable to situations in which persons are exposed as a consequence of their employment, who have been made fully aware of the potential for exposure and can exercise control over their exposure. This exposure category is also applicable when the exposure is of a transient nature due to incidental passage through a location where the exposure levels may be higher than the general population/uncontrolled limits, but the exposed person is fully aware of the potential for exposure and can exercise control over his or her exposure by leaving the area or by some other appropriate means.

Human Exposure	Uncontrolled Environment General Population	Controlled Environment Occupational
<b>Partial Peak SAR</b> <sup>1)</sup> (Partial)	1.60 mW/g	8.00 mW/g
<b>Partial Average SAR</b> <sup>2)</sup> (Whole Body)	0.08 mW/g	0.40 mW/g
<b>Partial Peak SAR</b> <sup>3)</sup> (Hands/Feet/Ankle/Wrist)	4.00 mW/g	20.00 mW/g

- 1) The spatial Peak value of the SAR averaged over any 1g gram of tissue (defined as a tissue volume in the shape of a cube) and over the appropriate averaging time.
- 2) The spatial Average value of the SAR averaged over the whole body.
- 3) The Spatial Peak value of the SAR averaged over any 10 grams of tissue (defined as a tissue volume in the shape of a cube) and over the appropriate averaging time.

### 5.2 RF Exposure Limits for Frequencies Above 6 GHz

Per §1.1310 (d)(3), the MPE limits are applied for frequencies above 6 GHz. Power Density is expressed in units of W/m<sup>2</sup> or mW/cm<sup>2</sup>.

Peak Spatially Averaged Power Density was evaluated over a circular area of 4 cm<sup>2</sup> per interim FCC Guidance for near-field power density evaluations per October 2018 TCB Workshop notes.

Human Exposure	Uncontrolled Environment General Population	Controlled Environment Occupational
<b>Power Density</b>	1.0 mW/cm <sup>2</sup>	5.0 mW/cm <sup>2</sup>

Note: 1.0 mW/cm<sup>2</sup> is 10 W/m<sup>2</sup>

## 6. RF Average Conducted Output Power

Band	Ant.	Mode	Conducted Powers (dBm)		
			Low	Mid	High
U-NII-5	Main	802.11ax (160-SU)	13.29	13.21	13.25
	Aux		13.13	13.21	13.29
	MIMO(Main)		11.26	11.38	11.48
	MIMO(Aux)		11.42	11.24	11.32
U-NII-6	Main	802.11ax (160-SU)	-	13.34	-
	Aux		-	13.28	-
	MIMO(Main)		-	11.36	-
	MIMO(Aux)		-	11.20	-
U-NII-7	Main	802.11ax (160-SU)	13.18	-	13.08
	Aux		13.02	-	13.17
	MIMO(Main)		10.41	-	10.32
	MIMO(Aux)		10.49	-	10.42
U-NII-8	Main	802.11ax (160-SU)	-	12.15	-
	Aux		-	13.04	-
	MIMO(Main)		-	10.33	-
	MIMO(Aux)		-	10.35	-

Justification for test configurations for WLAN per KDB Publication 248227 D01v02r02:

- Power measurements were performed for the transmission mode configuration with the highest maximum output power specified for production units.
- For transmission modes with the same maximum output power specification, powers were measured for the largest channel bandwidth, lowest order modulation and lowest data rate.
- For transmission modes with identical maximum specified output power, channel bandwidth, modulation and data rates, power measurements were required for all identical configurations.
- For each transmission mode configuration, powers were measured for the highest and lowest channels; and at the mid-band channel(s) when there were at least 3 channels supported.

Power Measurement Setup





## 7. System Verification

### 7.1 Tissue Verification

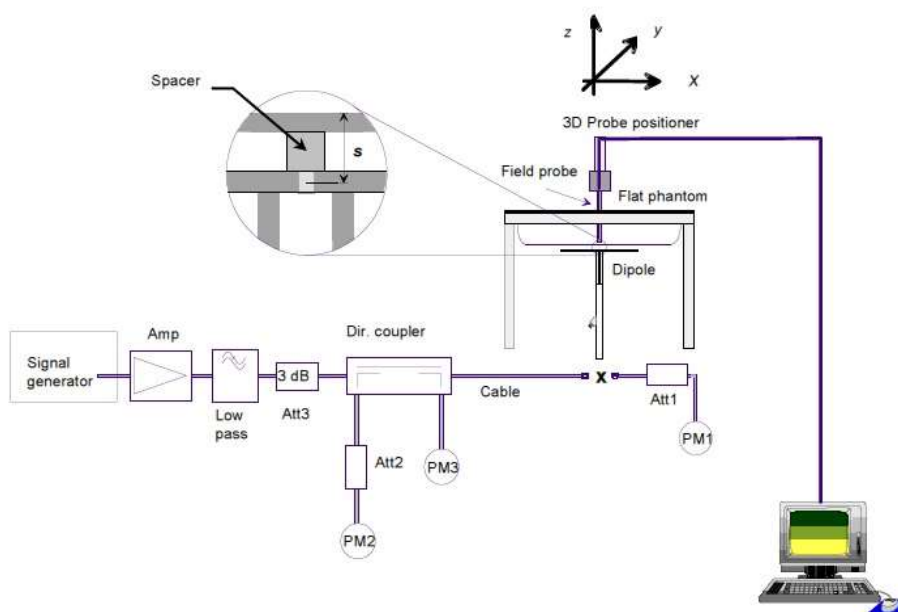
The dielectric properties for this Tissue Simulant Liquids were measured by using the SPEAG Model DAK3.5 Dielectric Probe in conjunction with Agilent E5071B Network Analyzer (300 kHz – 8 500 MHz). The Conductivity ( $\sigma$ ) and Permittivity ( $\rho$ ) are listed in Table 1. For the SAR measurement given in this report. The temperature variation of the Tissue Simulant Liquids was  $(22 \pm 2) ^\circ\text{C}$ .

Freq. (MHz)	Limit/Measured		Permittivity ( $\rho$ )	Conductivity ( $\sigma$ )	Temp. ( $^\circ\text{C}$ )
6 500.0	Recommended Limit		$34.50 \pm 5 \%$ (32.78~36.23)	$6.07 \pm 5 \%$ (5.77~6.37)	$22 \pm 2$
	Measured	2021-08-20	34.00	6.28	20.49
6 500.0	Recommended Limit		$34.50 \pm 5 \%$ (32.78~36.23)	$6.07 \pm 5 \%$ (5.77~6.37)	$22 \pm 2$
	Measured	2021-08-21	33.70	6.22	21.26
6 500.0	Recommended Limit		$34.50 \pm 5 \%$ (32.78~36.23)	$6.07 \pm 5 \%$ (5.77~6.37)	$22 \pm 2$
	Measured	2021-08-24	33.70	6.21	21.09

<Table 1. Measurement result of Tissue electric parameters>

## 7.2.1 SAR Test System Verification

The microwave circuit arrangement for system verification is sketched below picture. The daily system accuracy verification occurs within the flat section of the SAM phantom. A SAR measurement was performed to see if the measured SAR was within  $\pm 10\%$  from the target SAR values. The tests were conducted on the same days as the measurement of the EUT. The obtained results from the system accuracy verification are displayed in the Table 2. During the tests, the ambient temperature of the laboratory was in the range  $(22 \pm 2) ^\circ\text{C}$ , the relative humidity was in the range  $(50 \pm 20)\%$  and the liquid depth Above the ear/grid reference points was above 15 cm in all the cases. It is seen that the system is operating within its specification, as the results are within acceptable tolerance of the reference values.



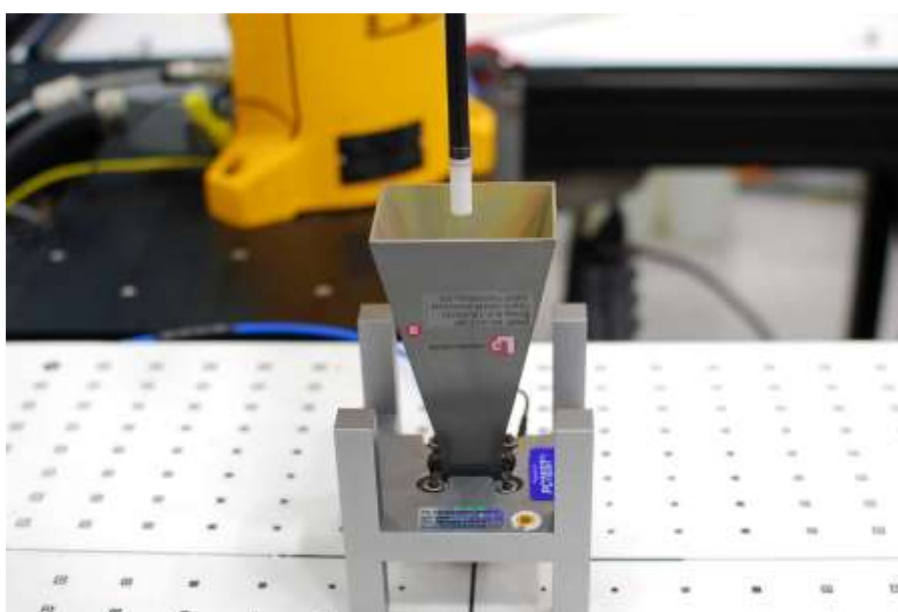
Verification Kit	Probe S/N	Frequency (MHz)	Tissue Type	Input Power (mW)	Limit/Measured (Normalized to 1 W)		
					Recommended Limit 1g (Normalized)	Measured	2021-08-20
D6.5GHzV2 SN: 1005	EX3DV4 SN: 3865	6 500.0	HSL	10	Recommended Limit 1g (Normalized)	286.00 $\pm$ 10 % (257.40~314.60)	
					Measured	2021-08-20	287.00
D6.5GHzV2 SN: 1005	EX3DV4 SN: 3865	6 500.0	HSL	10	Recommended Limit 1g (Normalized)	286.00 $\pm$ 10 % (257.40~314.60)	
					Measured	2021-08-21	281.00
D6.5GHzV2 SN: 1005	EX3DV4 SN: 3865	6 500.0	HSL	10	Recommended Limit 1g (Normalized)	286.00 $\pm$ 10 % (257.40~314.60)	
					Measured	2021-08-24	280.00

<Table 2. System Verification Result>

## 7.2.2 Power Density Test System Verification

The system was verified to be within  $\pm 0.66$  dB of the power density targets on the calibration certificate according to the test system specification in the user's manual and calibration facility recommendation. The 0.66 dB deviation threshold represents the expanded uncertainty for system performance checks using SPEAG's mmWave verification sources. The same spatial resolution and measurement region used in the source calibration was applied during the system check.

The measured power density distribution of verification source was also confirmed through visual inspection to have no noticeable differences, both spatially (shape) and numerically (level) from the distribution provided by the manufacturer, per November 2017 TCBC Workshop Notes.



[Figure 3. System Verification Setup Photo]

Source (S/N)	Probe (S/N)	Frequency (GHz)	Date	Prad (mW)	Total psPD (W/m <sup>2</sup> over 4 cm <sup>2</sup> )	Input Power (mW)	Total psPD (W/m <sup>2</sup> over 4 cm <sup>2</sup> )		Deviation (dB)	Limit (dB)
					Target		Measured	Normalized		
1023	9489	10	2021-08-23	74.0	41.6	10	6.20	45.9	0.43	$\pm 0.66$
1023	9489	10	2021-08-24	74.0	41.6	10	5.63	41.7	0.01	$\pm 0.66$

### Notes

- 1) 10 mm distance spacing was used from the reference horn antenna aperture to the probe element.
- 2) According to IEC TR 63170, the power density measurement results should be normalized to the delivered input power to an input power level of 0 dBm and compared to the appropriate target values of the calibrated reference sources.

## 8. SAR Test Results

### 8.1 Standalone Body SAR and Absorbed Power Density Test Results

U-NII-5													
Mode	Ant.	EUT Position	Distance (mm)	Frequency (MHz)	Measured Conducted Power (dBm)		Max. Tune-up Power (dBm)	Power Scaling Factor	Duty Cycle Compensate Factor	Measured 1g SAR (W/kg)	Scaled 1g SAR (W/kg)	Estimated APD (W/m²)	Plot No.
					Main	Aux						4 cm²	
802.11ax (160-SU)	Main	Rear	0	6 025.0	13.29		14.00	1.178	1.012	0.495	0.590	3.450	
		Rear	0	6 345.0	13.25		14.00	1.189	1.012	0.766	<b>0.922</b>	5.390	1
		Rear	0	6 185.0	13.21		14.00	1.199	1.012	0.590	0.716	4.130	
	Aux	Rear	0	6 345.0	13.29		14.00	1.178	1.012	0.553	<b>0.659</b>	3.690	2
		Rear	0	6 185.0	13.21		14.00	1.199	1.012	0.371	0.450	2.470	
	MIMO	Rear	0	6 345.0	11.48	11.32	11.50	1.042	1.021	0.416	<b>0.443</b>	2.940	3
		Rear	0	6 025.0	11.26	11.42	11.50	1.057	1.021	0.271	0.292	1.880	

U-NII-6													
Mode	Ant.	EUT Position	Distance (mm)	Frequency (MHz)	Measured Conducted Power (dBm)		Max. Tune-up Power (dBm)	Power Scaling Factor	Duty Cycle Compensate Factor	Measured 1g SAR (W/kg)	Scaled 1g SAR (W/kg)	Estimated APD (W/m <sup>2</sup> )	Plot No
					Main	Aux						4 cm <sup>2</sup>	
802.11ax (160-SU)	Main	Rear	0	6 505.0	13.34		14.00	1.164	1.012	0.874	<b>1.030</b>	6.000	4
	Aux	Rear	0	6 505.0	13.28		14.00	1.180	1.012	0.778	<b>0.929</b>	5.190	5
	MIMO	Rear	0	6 505.0	11.36	11.20	11.50	1.072	1.021	0.555	<b>0.607</b>	3.850	6
	Repeated SAR Test												
	Main	Rear	0	6 505.0	13.34		14.00	1.164	1.012	0.874	1.030	6.020	

U-NII-7													
Mode	Ant.	EUT Position	Distance (mm)	Frequency (MHz)	Measured Conducted Power (dBm)		Max. Tune-up Power (dBm)	Power Scaling Factor	Duty Cycle Compensate Factor	Measured 1g SAR (W/kg)	Scaled 1g SAR (W/kg)	Estimated APD (W/m <sup>2</sup> )	Plot No.
												4 cm <sup>2</sup>	
					Main	Aux							
802.11ax (160-SU)	Main	Rear	0	6 665.0	13.18		13.25	1.016	1.012	1.090	1.121	7.460	
		Rear	0	6 825.0	13.08		13.25	1.040	1.012	1.060	1.116	7.330	
	Aux	Rear	0	6 825.0	13.17		13.25	1.019	1.012	0.650	<b>0.670</b>	4.300	8
	MIMO	Rear	0	6 665.0	10.41	10.49	10.50	1.021	1.021	0.591	<b>0.616</b>	4.100	9
	Repeated SAR Test												
	Main	Rear	0	6 665.0	13.18		13.25	1.016	1.012	1.160	<b>1.193</b>	7.980	7

U-NII-8													
Mode	Ant.	EUT Position	Distance (mm)	Frequency (MHz)	Measured Conducted Power (dBm)		Max. Tune-up Power (dBm)	Power Scaling Factor	Duty Cycle Compensate Factor	Measured 1g SAR (W/kg)	Scaled 1g SAR (W/kg)	Estimated APD (W/m <sup>2</sup> )	Plot No.
					Main	Aux						4 cm <sup>2</sup>	
802.11ax (160-SU)	Main	Rear	0	6 985.0	12.15		13.25	1.288	1.012	0.713	<b>0.929</b>	5.200	10
	Aux	Rear	0	6 985.0	13.04		13.25	1.050	1.012	0.665	<b>0.707</b>	4.320	11
	MIMO	Rear	0	6 985.0	10.33	10.35	10.50	1.040	1.021	0.500	<b>0.531</b>	3.510	12

**KCTL Inc.**

65, Sinwon-ro, Yeongtong-gu,  
Suwon-si, Gyeonggi-do, 16677, Korea  
TEL: 82-31-285-0894 FAX: 82-505-299-8311  
[www.kctl.co.kr](http://www.kctl.co.kr)

Report No.:  
KR21-SPF0057  
Page (19) of (107)

**General Notes:**

1. The test data reported are the worst-case SAR values according to test procedures specified in IEEE 1528-2013, and FCC KDB Publication 447498 D01v06.
2. Batteries are fully charged at the beginning of the SAR measurements.
3. Liquid tissue depth was at least 15.0 cm for all frequencies.
4. SAR results were scaled to the maximum allowed power to demonstrate compliance per FCC KDB Publication 447498 D01v06.
5. Per FCC guidance, SAR was performed using 6.5 GHz SAR probe calibration factors. Per October 2020 TCB Workshop notes, 5 channels were tested. Absorbed power density (APD) using a 4cm<sup>2</sup> averaging area is reported based on SAR measurements.

**WLAN Notes:**

1. When the maximum reported 1g averaged SAR is  $\leq 0.8$  W/kg, SAR testing on additional channels was not required. Otherwise, SAR for the next highest output power channel was required until the reported SAR result was  $\leq 1.20$  W/kg for 1g evaluations or all test channels were measured.
2. The device was configured to transmit continuously at the required data rate, channel bandwidth and signal modulation, using the highest transmission duty factor supported by the test mode tools. The reported SAR was scaled to the 100% transmission duty factor to determine compliance.

## 9. Power Density Test Results

### 9.1 Standalone Body Power Density Test Results

U-NII-5											
Mode	Ant.	EUT Position	Distance (mm)	Frequency (MHz)	Max. Tune-up Power (dBm)	iPD (W/m <sup>2</sup> )	Grid Step (λ)	Measurement Uncertainty	Measured Total psPD (W/m <sup>2</sup> )	Scaled Total psPD (W/m <sup>2</sup> )	Plot No.
									4 cm <sup>2</sup>	4 cm <sup>2</sup>	
802.11ax (160-SU)	Main	Rear	2	6 345.0	14.00	-	0.0625	1.462	4.95	<b>7.24</b>	13
		Rear	2	6 185.0	14.00	-	0.0625	1.462	4.01	5.86	
		Rear	2	6 025.0	14.00	-	0.0625	1.462	2.88	4.21	

U-NII-6											
Mode	Ant.	EUT Position	Distance (mm)	Frequency (MHz)	Max. Tune-up Power (dBm)	iPD (W/m <sup>2</sup> )	Grid Step (λ)	Measurement Uncertainty	Measured Total psPD (W/m <sup>2</sup> )	Scaled Total psPD (W/m <sup>2</sup> )	Plot No.
									4 cm <sup>2</sup>	4 cm <sup>2</sup>	
802.11ax (160-SU)	Main	Rear	2	6 505.0	14.00	-	0.0625	1.462	4.67	<b>6.83</b>	14

U-NII-7											
Mode	Ant.	EUT Position	Distance (mm)	Frequency (MHz)	Max. Tune-up Power (dBm)	iPD (W/m <sup>2</sup> )	Grid Step (λ)	Measurement Uncertainty	Measured Total psPD (W/m <sup>2</sup> )	Scaled Total psPD (W/m <sup>2</sup> )	Plot No.
									4 cm <sup>2</sup>	4 cm <sup>2</sup>	
802.11ax (160-SU)	Main	Rear	2	6 665.0	13.25	-	0.0625	1.462	4.98	7.28	
		Rear	2	6 825.0	13.25	2.57	0.0625	1.462	4.99	<b>7.30</b>	15
		Rear	8.79	6 825.0	13.25	3.02	0.0625	1.462	3.19	4.66	

U-NII-8											
Mode	Ant.	EUT Position	Distance (mm)	Frequency (MHz)	Max. Tune-up Power (dBm)	iPD (W/m <sup>2</sup> )	Grid Step (λ)	Measurement Uncertainty	Measured Total psPD (W/m <sup>2</sup> )	Scaled Total psPD (W/m <sup>2</sup> )	Plot No.
									4 cm <sup>2</sup>	4 cm <sup>2</sup>	
802.11ax (160-SU)	Main	Rear	2	6 985.0	13.25	-	0.0625	1.462	4.81	<b>7.03</b>	16

#### Power Density General Notes:

- Batteries are fully charged at the beginning of the measurements.
- Power density was calculated by repeated E-field measurements on two measurement planes separated by  $\lambda/4$ .
- The device was configured to transmit continuously at the required data rate, channel bandwidth and signal modulation, using the highest transmission duty factor supported by the test mode tools.
- Per FCC guidance and equipment manufacturer guidance, power density results were scaled according to IEC 62479:2010 for the portion of the measurement uncertainty > 30%. Total expanded uncertainty of 2.46 dB (76.198%) was used to determine the psPD measurement scaling factor.
- Per equipment manufacturer guidance, power density was measured at  $d=2\text{mm}$  and  $d=\lambda/5\text{mm}$  using the same grid size and grid step size for some frequencies and surfaces. The integrated Power Density (iPD) was calculated based on these measurements. Since iPD ratio between the two distances is < 1dB, the grid step was sufficient for determining compliance at  $d=2\text{mm}$ .



## 10. Simultaneous Transmission

### 10.1 #Simultaneous Transmission Configurations

No.	Scenario	Operation
1	WLAN 6 GHz Main + Bluetooth Aux	Yes
2	WLAN 6 GHz Aux + Bluetooth Aux	Yes
3	WLAN 6 GHz Main + WLAN 6 GHz Aux	Yes
4	WLAN 6 GHz MIMO + Bluetooth Aux	Yes

Notes:

- It is to use the Bluetooth and WLAN same antenna path.

### 10.2 Simultaneous Transmission Analysis

Exposure Condition /Position		WLAN			Bluetooth	Summation		
		6.5 GHz Main	6.5 GHz Aux	6.5 GHz MIMO	Aux			
		[①]	[②]	[③]	[④]	[①+④]	[②+④]	[③+④]
<b>Body</b>	Rear	1.193	0.929	0.616	0.133	<b>1.326</b>	1.062	0.749

Notes:

- 1) Simultaneous transmission SAR test exclusion considerations  
 Simultaneous transmission SAR test exclusion is determined for each operating configuration and exposure condition according to the reported standalone SAR of each applicable simultaneously transmitting antenna. When the sum of 1-g or 10-g SAR of all simultaneously transmitting antennas in an operating mode and exposure condition combination is within the SAR limit, SAR test exclusion applies to that simultaneous transmission configuration. Per KDB Publication 447498 D01v06.
- 2) When the sum of SAR1g of all simultaneously transmitting antennas in an operating mode and exposure condition combination is within the SAR limit (SAR1g 1.6 W/kg), the SPLSR procedures is not required. When the sum of SAR1g is greater than the SAR limit (SAR1g 1.6 W/kg), SAR test exclusion is determined by the SPLSR.
- 3) Please refer to the figure in the original report (KR21-SPF0007) for Bluetooth values.

## 11. SAR Measurement Variability

Per FCC KDB Publication 865664 D01v01r04, SAR measurement variability was assessed for each frequency band, which was determined by the SAR probe calibration point and tissue-equivalent medium used for the device measurements. When both head and body tissue-equivalent media were required for SAR measurements in a frequency band, the variability measurement procedures were applied to the tissue medium with the highest measured SAR, using the highest measured SAR configuration for that tissue-equivalent medium. These additional measurements were repeated after the completion of all measurements requiring the same head or body tissue equivalent medium in a frequency band. The test device was returned to ambient conditions (normal room temperature) with the battery fully charged before it was re-mounted on the device holder for the repeated measurement(s) to minimize any unexpected variations in the repeated results.

SAR Measurement Variability was assessed using the following procedures for each frequency band:


- 1) Repeated measurements are not required when the original highest measured SAR is < 0.80 W/kg.
- 2) **When the original highest measured SAR is  $\geq 0.80$  W/kg, the measurement was repeated once.**
- 3) A second repeated measurement was performed only if the ratio of largest to smallest SAR for the original and first repeated measurements was > 1.20 or when the original or repeated measurement was  $\geq 1.45$  W/kg (~ 10% from the 1-g SAR limit).
- 4) A third repeated measurement was performed only if the original, first or second repeated measurement was  $\geq 1.5$  W/kg and the ratio of largest to smallest SAR for the original, first and second repeated measurements is > 1.20.

Band	Mode	Ant.	Frequency (MHz)	EUT Position	Separation Distance (mm)	Measured 1 g SAR (W/kg)	Repeated 1g SAR (W/kg)	Ratio
U-NII-6	802.11ax (160-SU)	Main	6 505.0	Rear	0	0.874	0.874	1.00
U-NII-7	802.11ax (160-SU)	Main	6 665.0	Rear	0	1.090	1.160	1.03

## 12. Measurement Uncertainty

### 12.1 SAR Measurement Uncertainty

Per KDB 865664 D01 SAR measurement 100MHz to 6GHz, when the highest measured 1-g SAR within a frequency band is  $< 1.5$  W/kg and the measured 10-g SAR within a frequency band is  $< 3.75$  W/kg. The expanded SAR measurement uncertainty must be  $\leq 30\%$ , for a confidence interval of  $k = 2$ . If these conditions are met, extensive SAR measurement uncertainty analysis described in IEEE Standard 1528-2013 is not required in SAR reports submitted for equipment approval. For this device, the highest measured 1-g SAR is less 1.5W/kg and highest measured 10-g SAR is less 3.75W/kg. Therefore, the measurement uncertainty table is not required in this report.

<b>KCTL Inc.</b> 65, Sinwon-ro, Yeongtong-gu, Suwon-si, Gyeonggi-do, 16677, Korea TEL: 82-31-285-0894 FAX: 82-505-299-8311 <a href="http://www.kctl.co.kr">www.kctl.co.kr</a>	Report No.: <b>KR21-SPF0057</b> Page (24) of (107)	
---	--	---

## 12.2 Power Density Measurement Uncertainty

Source of uncertainty	Uncertainty Value ( $\pm$ dB)	Probability distribution	Div.	$c_i$	Standard Uncertainty ( $\pm$ dB)	$\nu_i$
<b>Measurement system</b>						
Calibration	0.49	N	1.00	1.00	0.49	$\infty$
Probe correction	0.00	R	1.73	1.00	0.00	$\infty$
Frequency response (BW $\leq$ 1 GHz)	0.20	R	1.73	1.00	0.12	$\infty$
Sensor cross coupling	0.00	R	1.73	1.00	0.00	$\infty$
Isotropy	0.50	R	1.73	1.00	0.29	$\infty$
Linearity	0.20	R	1.73	1.00	0.12	$\infty$
Probe scattering	0.00	R	1.73	1.00	0.00	$\infty$
Probe positioning offset	0.30	R	1.73	1.00	0.17	$\infty$
Probe positioning repeatability	0.04	R	1.73	1.00	0.02	$\infty$
Sensor mechanical offset	0.00	R	1.73	1.00	0.00	$\infty$
Probe spatial resolution	0.00	R	1.73	1.00	0.00	$\infty$
Field impedance dependence	0.00	R	1.73	1.00	0.00	$\infty$
Amplitude and phase drift	0.00	R	1.73	1.00	0.00	$\infty$
Amplitude and phase noise	0.04	R	1.73	1.00	0.02	$\infty$
Measurement area truncation	0.00	R	1.73	1.00	0.00	$\infty$
Data acquisition	0.03	N	1.00	1.00	0.03	$\infty$
Sampling	0.00	R	1.73	1.00	0.00	$\infty$
Field reconstruction	1.77	R	1.73	1.00	1.02	$\infty$
Forward transformation	0.00	R	1.73	1.00	0.00	$\infty$
Power density scaling	-	R	1.73	1.00	-	$\infty$
Spatial averaging	0.10	R	1.73	1.00	0.06	$\infty$
System detection limit	0.04	R	1.73	1.00	0.02	$\infty$
<b>DUT and environmental factors</b>						
Probe coupling with DUT	0.00	R	1.73	1.00	0.00	$\infty$
Modulation response	0.40	R	1.73	1.00	0.23	$\infty$
Integration time	0.00	R	1.73	1.00	0.00	$\infty$
Response time	0.00	R	1.73	1.00	0.00	$\infty$
Device holder influence	0.10	R	1.73	1.00	0.06	$\infty$
DUT alignment	0.00	R	1.73	1.00	0.00	$\infty$
RF ambient conditions	0.04	R	1.73	1.00	0.02	$\infty$
Ambient reflections	0.04	R	1.73	1.00	0.02	$\infty$
Immunity / secondary reception	0.00	R	1.73	1.00	0.00	$\infty$
Drift of the DUT	0.22	R	1.73	1.00	0.13	$\infty$
Combined standard uncertainty	RSS				1.23	
Expanded uncertainty (95 % confidence interval)	$k = 2$				2.46	

### 13. Test Equipment Information

Test Platform	SPEAG DASY6 System			
Version	DASY6: 16.0.0.116 / DASY6 mmWave: 2.4.2.62			
Location	KCTL Inc, 65, Sinwon-ro, Yeongtong-gu, Suwon-si, Gyeonggi-do, Korea			
Manufacture	SPEAG			
Hardware Reference				
Equipment	Model	Serial Number	Date of Calibration	Due date of next Calibration
Shield Room	-	8F - 3	-	-
Shield Room	-	8F - 4	-	-
DASY6 Robot	TX60 Lspeag	F/19/0007289/A/001	-	-
DASY6 Robot	TX90XL speag	F/18/0004968/A/001	-	-
Mounting Device	Laptop Holder	-	-	-
Phantom	mmWave Phantom	1062	-	-
Phantom	2mm Oval Phantom ELI5	2097	-	-
mmWave Device Holder	mmWave Device Holder	1116	-	-
DAE	DAE4	1342	2021-06-02	2022-06-02
DAE	DAE4	1586	2021-04-27	2022-04-27
Probe	EX3DV4	3865	2021-01-25	2022-01-25
Isotropic E-Field Probe	EUmmWV4	9489	2021-05-28	2022-05-28
PSG Analog Signal Generator	E8257D	MY60020337	2021-01-21	2022-01-21
Dual Power Meter	EPM-442A	GB37480680	2021-05-11	2022-05-11
Power Sensor	8481H	2703A11902	2021-05-11	2022-05-11
Power Sensor	8481H	3318A18090	2021-05-11	2022-05-11
Attenuator	8491A	21552	2021-05-10	2022-05-10
Attenuator	8491A	35560	2021-05-10	2022-05-10
Attenuator	8491A	35934	2021-05-10	2022-05-10
Dual Directional Coupler	772D	2839A160504	2021-05-10	2022-05-10
Preamplifier	8449B	3008A01802	2021-04-01	2022-04-01
System Verification Device	5G Verification Source 10 GHz	1023	2021-01-19	2022-01-19
Dipole Validation Kits	D6.5GHzV2	1005	2020-08-21	2022-08-21
Network Analyzer	E5071B	MY42403524	2021-02-15	2022-02-15
Dielectric Assessment Kit	DAK-3.5	1078	2021-05-26	2022-05-26
Humidity/Temp	MHB-382SD	46301	2021-02-28	2022-02-28
Humidity/Temp	MHB-382SD	46307	2021-08-12	2022-08-12
Spectrum Analyzer	FSP7	100289	2020-12-23	2021-12-23

## 14. Test System Verification and Test Results

### 14.1 SAR Test System Verification and Test Results

KCTL Inc.

Measurement Report for Dipole D6.5GHzV2, FRONT, Validation band, UID 0 -, Channel 6500 (6500.0MHz)

#### Device under Test Properties

Model, Manufacturer	Dimensions [mm]	IMEI	DUT Type
Dipole D6.5GHzV2, Speag	16.0 x 6.0 x 300.0	1005	Validation Dipole

#### Exposure Conditions

Phantom Section, TSL	Position, Test Distance [mm]	Band	Group, UID	Frequency [MHz], Channel Number	Conversion Factor	TSL Conductivity [S/m]	TSL Permittivity
Flat, HSL	FRONT, 5.00	Validation band	CW, 0--	6500.0, 6500	5.25	6.28	34.0

#### Hardware Setup

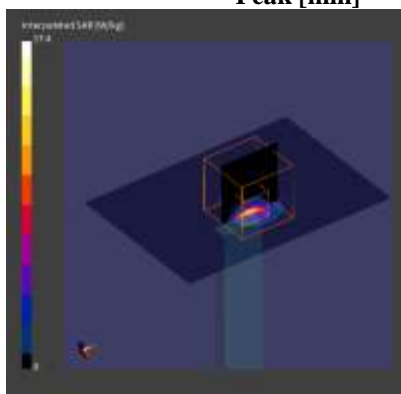
Phantom	TSL, Measured Date	Probe, Calibration Date	DAE, Calibration Date
Front_Left_ELI V8.0 - 2097	HBBL-600-10000, 2021- Aug-20	EX3DV4 - SN3865, 2021- 01-25	DAE4 Sn1586, 2021-04- 27

#### Scan Setup

	Area Scan	Zoom Scan
Grid Extents [mm]	60.0 x 85.0	22.0 x 22.0 x 22.0
Grid Steps [mm]	6.0 x 8.5	3.4 x 3.4 x 1.4
Sensor Surface [mm]	3.0	1.4
Graded Grid	Yes	Yes
Grading	1.5	1.4
Ratio		
MAIA	N/A	N/A
Surface	VMS + 6p	VMS + 6p
Detection		
Scan Method	Measured	Measured

#### Measurement Results

	Area Scan	Zoom Scan
Date	2021-08-20	2021-08-20
psSAR1g [W/kg]	2.61	2.87
psSAR10g [W/kg]	0.516	0.550
Power Drift [dB]		-0.18
Power	Disabled	Disabled
Scaling		
Scaling		
Factor [dB]		
M2/M1 [%]		50.4
Dist 3dB Peak [mm]		4.9





KCTL Inc.

Measurement Report for Dipole D6.5GHzV2, FRONT, Validation band, UID 0 -, Channel 6500 (6500.0MHz)

#### Device under Test Properties

Model, Manufacturer	Dimensions [mm]	IMEI	DUT Type
Dipole D6.5GHzV2, Speag	16.0 x 6.0 x 300.0	1005	Validation Dipole

#### Exposure Conditions

Phantom Section, TSL	Position, Test Distance [mm]	Band	Group, UID	Frequency [MHz], Channel Number	Conversion Factor	TSL Conductivity [S/m]	TSL Permittivity
Flat, HSL	FRONT, 5.00	Validation band	CW, 0--	6500.0, 6500	5.25	6.22	33.7

#### Hardware Setup

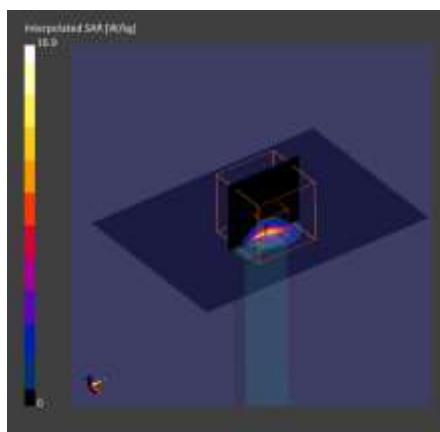
Phantom	TSL, Measured Date	Probe, Calibration Date	DAE, Calibration Date
Front_Left_ELI V8.0 - 2097	HBBL-600-10000 , 2021-Aug-21	EX3DV4 - SN3865, 2021-01-25	DAE4 Sn1586, 2021-04-27

#### Scan Setup

	Area Scan	Zoom Scan
Grid Extents [mm]	60.0 x 85.0	22.0 x 22.0 x 22.0
Grid Steps [mm]	6.0 x 8.5	3.4 x 3.4 x 1.4
Sensor Surface [mm]	3.0	1.4
Graded Grid	Yes	Yes
Grading Ratio	1.5	1.4
MAIA	N/A	N/A
Surface Detection	VMS + 6p	VMS + 6p
Scan Method	Measured	Measured

#### Measurement Results

	Area Scan	Zoom Scan
Date	2021-08-21	2021-08-21
psSAR1g [W/kg]	2.58	2.81
psSAR10g [W/kg]	0.504	0.540
Power Drift [dB]		-0.04
Power Scaling	Disabled	Disabled
Factor [dB]		
M2/M1 [%]		50.6
Dist 3dB Peak [mm]		4.9



KCTL Inc.

Measurement Report for Dipole D6.5GHzV2, FRONT, Validation band, UID 0 -, Channel 6500 (6500.0MHz)

#### Device under Test Properties

Model, Manufacturer	Dimensions [mm]	IMEI	DUT Type
Dipole D6.5GHzV2, Speag	16.0 x 6.0 x 300.0	1005	Validation Dipole

#### Exposure Conditions

Phantom Section, TSL	Position, Test Distance [mm]	Band	Group, UID	Frequency [MHz], Channel Number	Conversion Factor	TSL Conductivity [S/m]	TSL Permittivity
Flat, HSL	FRONT, 5.00	Validation band	CW, 0--	6500.0, 6500	5.25	6.21	33.7

#### Hardware Setup

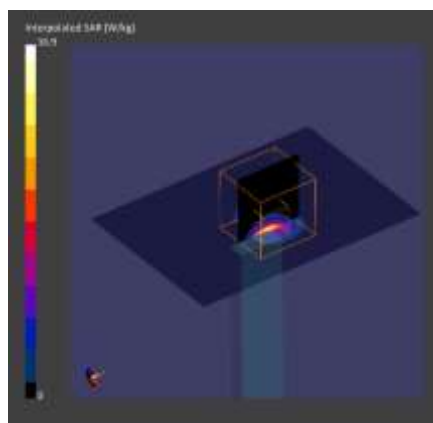
Phantom	TSL, Measured Date	Probe, Calibration Date	DAE, Calibration Date
Front_Left_ELI V8.0 - 2097	HBBL-600-10000, 2021- Aug-24	EX3DV4 - SN3865, 2021- 01-25	DAE4 Sn1586, 2021-04- 27

#### Scan Setup

	Area Scan	Zoom Scan
Grid Extents [mm]	60.0 x 85.0	22.0 x 22.0 x 22.0
Grid Steps [mm]	6.0 x 8.5	3.4 x 3.4 x 1.4
Sensor Surface [mm]	3.0	1.4
Graded Grid	Yes	Yes
Grading Ratio	1.5	1.4
MAIA	N/A	N/A
Surface Detection	VMS + 6p	VMS + 6p
Scan Method	Measured	Measured

#### Measurement Results

	Area Scan	Zoom Scan
Date	2021-08-24	2021-08-24
psSAR1g [W/kg]	2.56	2.80
psSAR10g [W/kg]	0.507	0.540
Power Drift [dB]		-0.03
Power Scaling	Disabled	Disabled
Factor [dB]		
M2/M1 [%]		50.2
Dist 3dB Peak [mm]		4.8



1)

**KCTL Inc.**

**Measurement Report for NP950XDC, BACK, Custom Band 802.11 ax, UID 10755 AAC, Channel 79 (6345.0MHz)**

#### Device under Test Properties

Model, Manufacturer	Dimensions [mm]	IMEI	DUT Type
NP950XDC, SAMSUNG	354.0 x 226.0 x 12.0	1GH591ZR100119F	Laptop + Main Antenna

#### Exposure Conditions

Phantom Section, TSL	Position, Test Distance [mm]	Band	Group, UID	Frequency [MHz], Channel Number	Conversion Factor	TSL Conductivity [S/m]	TSL Permittivity
Flat, HSL	BACK, 0.00	Custom Band	CW, 10755-AAC	6345.0, 79	5.25	6.07	34.3

#### Hardware Setup

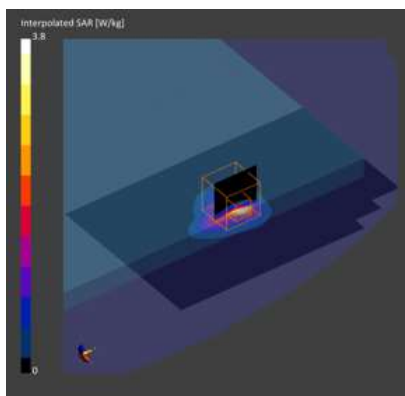
Phantom	TSL, Measured Date	Probe, Calibration Date	DAE, Calibration Date
Front_Left_ELI V8.0 - 2097	HBBL-600-10000, 2021-Aug-20	EX3DV4 - SN3865, 2021-01-25	DAE4 Sn1586, 2021-04-27

#### Scan Setup

	Area Scan	Zoom Scan
Grid Extents [mm]	102.0 x 153.0	22.0 x 22.0 x 22.0
Grid Steps [mm]	8.5 x 8.5	3.4 x 3.4 x 1.4
Sensor Surface [mm]	3.0	1.4
Graded Grid	Yes	Yes
Grading Ratio	1.5	1.4
MAIA	Y	Y
Surface	VMS + 6p	VMS + 6p
Detection		
Scan Method	Measured	Measured

#### Measurement Results

	Area Scan	Zoom Scan
Date	2021-08-20	2021-08-20
psSAR1g [W/kg]	0.816	0.766
psSAR10g [W/kg]	0.256	0.237
Power Drift [dB]		0.03
Power	Disabled	Disabled
Scaling		
Scaling Factor [dB]		
M2/M1 [%]		53.9
Dist 3dB Peak [mm]		6.1



2)

KCTL Inc.

Measurement Report for NP950XDC, BACK, Custom Band 802.11 ax, UID 10755 AAC, Channel 79 (6345.0MHz)

#### Device under Test Properties

Model, Manufacturer	Dimensions [mm]	IMEI	DUT Type
NP950XDC, SAMSUNG	354.0 x 226.0 x 12.0	1GH591ZR100119F	Laptop + Aux Antenna

#### Exposure Conditions

Phantom Section, TSL	Position, Test Distance [mm]	Band	Group, UID	Frequency [MHz], Channel Number	Conversion Factor	TSL Conductivity [S/m]	TSL Permittivity
Flat, HSL	BACK, 0.00	Custom Band	CW, 10755-AAC	6345.0, 79	5.25	6.07	34.3

#### Hardware Setup

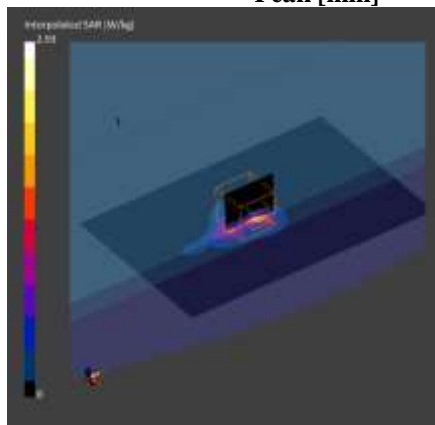
Phantom	TSL, Measured Date	Probe, Calibration Date	DAE, Calibration Date
Front_Left_ELI V8.0 - 2097	HBBL-600-10000, 2021-Aug-20	EX3DV4 - SN3865, 2021-01-25	DAE4 Sn1586, 2021-04-27

#### Scan Setup

	Area Scan	Zoom Scan
Grid Extents [mm]	102.0 x 153.0	22.0 x 22.0 x 22.0
Grid Steps [mm]	8.5 x 8.5	3.4 x 3.4 x 1.4
Sensor Surface [mm]	3.0	1.4
Graded Grid	Yes	Yes
Grading Ratio	1.5	1.4
MAIA	Y	Y
Surface Detection	VMS + 6p	VMS + 6p
Scan Method	Measured	Measured

#### Measurement Results

	Area Scan	Zoom Scan
Date	2021-08-20	2021-08-20
psSAR1g [W/kg]	0.534	0.553
psSAR10g [W/kg]	0.158	0.163
Power Drift [dB]		-0.01
Power Scaling	Disabled	Disabled
Scaling Factor [dB]		
M2/M1 [%]		53.8
Dist 3dB Peak [mm]		5.3



3)

**KCTL Inc.**

**Measurement Report for NP950XDC, BACK, Custom Band 802.11 ax, UID 10755 AAC, Channel 79 (6345.0MHz)**

#### Device under Test Properties

Model, Manufacturer	Dimensions [mm]	IMEI	DUT Type
NP950XDC, SAMSUNG	354.0 x 226.0 x 12.0	1GH591ZR100119F	Laptop + MIMO Antenna

#### Exposure Conditions

Phantom Section, TSL	Position, Test Distance [mm]	Band	Group, UID	Frequency [MHz], Channel Number	Conversion Factor	TSL Conductivity [S/m]	TSL Permittivity
Flat, HSL	BACK, 0.00	Custom Band	CW, 10755-AAC	6345.0, 79	5.25	6.07	34.3

#### Hardware Setup

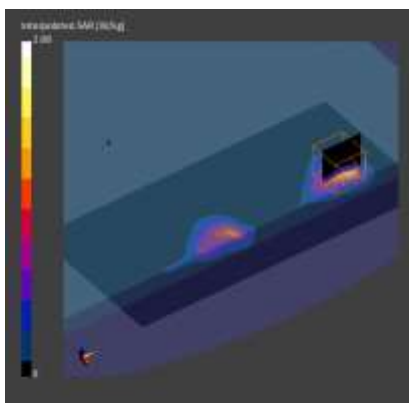
Phantom	TSL, Measured Date	Probe, Calibration Date	DAE, Calibration Date
Front_Left_ELI V8.0 - 2097	HBBL-600-10000, 2021-Aug-20	EX3DV4 - SN3865, 2021-01-25	DAE4 Sn1586, 2021-04-27

#### Scan Setup

	Area Scan	Zoom Scan
Grid Extents [mm]	102.0 x 204.0	22.0 x 22.0 x 22.0
Grid Steps [mm]	8.5 x 8.5	3.4 x 3.4 x 1.4
Sensor Surface [mm]	3.0	1.4
Graded Grid	Yes	Yes
Grading Ratio	1.5	1.4
MAIA	Y	Y
Surface Detection	VMS + 6p	VMS + 6p
Scan Method	Measured	Measured

#### Measurement Results

	Area Scan	Zoom Scan
Date	2021-08-20	2021-08-20
psSAR1g [W/kg]	0.378	0.416
psSAR10g [W/kg]	0.123	0.129
Power Drift [dB]		-0.05
Power Scaling	Disabled	Disabled
Scaling Factor [dB]		
M2/M1 [%]		54.4
Dist 3dB Peak [mm]		6.3



4)

**KCTL Inc.**

**Measurement Report for NP950XDC, BACK, Custom Band 802.11 ax, UID 10755 AAC, Channel 111 (6505.0MHz)**

#### Device under Test Properties

Model, Manufacturer	Dimensions [mm]	IMEI	DUT Type
NP950XDC, SAMSUNG	354.0 x 226.0 x 12.0	1GH591ZR100119F	Laptop + Main Antenna

#### Exposure Conditions

Phantom Section, TSL	Position, Test Distance [mm]	Band	Group, UID	Frequency [MHz], Channel Number	Conversion Factor	TSL Conductivity [S/m]	TSL Permittivity
Flat, HSL	BACK, 0.00	Custom Band	CW, 10755-AAC	6505.0, 111	5.25	6.28	34.0

#### Hardware Setup

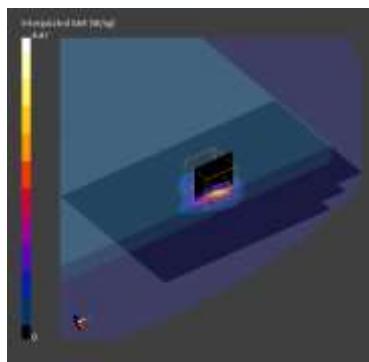
Phantom	TSL, Measured Date	Probe, Calibration Date	DAE, Calibration Date
Front_Left_ELI V8.0 - 2097	HBBL-600-10000, 2021-Aug-20	EX3DV4 - SN3865, 2021-01-25	DAE4 Sn1586, 2021-04-27

#### Scan Setup

	Area Scan	Zoom Scan
Grid Extents [mm]	102.0 x 153.0	22.0 x 22.0 x 22.0
Grid Steps [mm]	8.5 x 8.5	3.4 x 3.4 x 1.4
Sensor Surface [mm]	3.0	1.4
Graded Grid	Yes	Yes
Grading Ratio	1.5	1.4
MAIA	Y	Y
Surface Detection	VMS + 6p	VMS + 6p
Scan Method	Measured	Measured

#### Measurement Results

	Area Scan	Zoom Scan
Date	2021-08-20	2021-08-20
psSAR1g [W/kg]	0.843	0.874
psSAR10g [W/kg]	0.258	0.263
Power Drift [dB]	0.09	0.01
Power Scaling	Disabled	Disabled
Factor [dB]		
M2/M1 [%]		51.8
Dist 3dB Peak [mm]		6.3





5)

**KCTL Inc.**

**Measurement Report for NP950XDC, BACK, Custom Band 802.11 ax, UID 10755 AAC, Channel 111 (6505.0MHz)**

#### Device under Test Properties

Model, Manufacturer	Dimensions [mm]	IMEI	DUT Type
NP950XDC, SAMSUNG	354.0 x 226.0 x 12.0	1GH591ZR100119F	Laptop + Aux Antenna

#### Exposure Conditions

Phantom Section, TSL	Position, Test Distance [mm]	Band	Group, UID	Frequency [MHz], Channel Number	Conversion Factor	TSL Conductivity [S/m]	TSL Permittivity
Flat, HSL	BACK, 0.00	Custom Band	CW, 10755-AAC	6505.0, 111	5.25	6.28	34.0

#### Hardware Setup

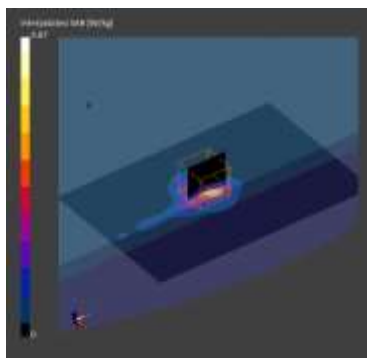
Phantom	TSL, Measured Date	Probe, Calibration Date	DAE, Calibration Date
Front_Left_ELI V8.0 - 2097	HBBL-600-10000, 2021-Aug-20	EX3DV4 - SN3865, 2021-01-25	DAE4 Sn1586, 2021-04-27

#### Scan Setup

	Area Scan	Zoom Scan
Grid Extents [mm]	102.0 x 153.0	22.0 x 22.0 x 22.0
Grid Steps [mm]	8.5 x 8.5	3.4 x 3.4 x 1.4
Sensor Surface [mm]	3.0	1.4
Graded Grid	Yes	Yes
Grading Ratio	1.5	1.4
MAIA	Y	Y
Surface Detection	VMS + 6p	VMS + 6p
Scan Method	Measured	Measured

#### Measurement Results

	Area Scan	Zoom Scan
Date	2021-08-20	2021-08-20
psSAR1g [W/kg]	0.671	0.778
psSAR10g [W/kg]	0.215	0.226
Power Drift [dB]		0.04
Power Scaling	Disabled	Disabled
Factor [dB]		
M2/M1 [%]		52.3
Dist 3dB Peak [mm]		6.1



6)

KCTL Inc.

Measurement Report for NP950XDC, BACK, Custom Band 802.11 ax, UID 10755 AAC, Channel 111  
(6505.0MHz)

#### Device under Test Properties

Model, Manufacturer	Dimensions [mm]	IMEI	DUT Type
NP950XDC, SAMSUNG	354.0 x 226.0 x 12.0	1GH591ZR100119F	Laptop + MIMO Antenna

#### Exposure Conditions

Phantom Section, TSL	Position, Test Distance [mm]	Band	Group, UID	Frequency [MHz], Channel Number	Conversion Factor	TSL Conductivity [S/m]	TSL Permittivity
Flat, HSL	BACK, 0.00	Custom Band	CW, 10755-AAC	6505.0, 111	5.25	6.28	34.0

#### Hardware Setup

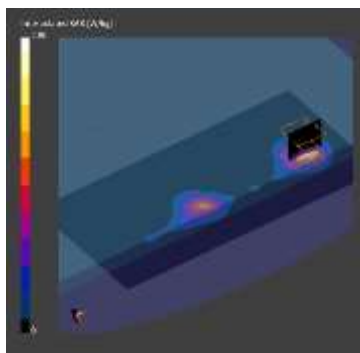
Phantom	TSL, Measured Date	Probe, Calibration Date	DAE, Calibration Date
Front_Left_ELI V8.0 - 2097	HBBL-600-10000, 2021-Aug-20	EX3DV4 - SN3865, 2021-01-25	DAE4 Sn1586, 2021-04-27

#### Scan Setup

	Area Scan	Zoom Scan
Grid Extents [mm]	102.0 x 204.0	22.0 x 22.0 x 22.0
Grid Steps [mm]	8.5 x 8.5	3.4 x 3.4 x 1.4
Sensor Surface [mm]	3.0	1.4
Graded Grid	Yes	Yes
Grading Ratio	1.5	1.4
MAIA	Y	Y
Surface Detection	VMS + 6p	VMS + 6p
Scan Method	Measured	Measured

#### Measurement Results

	Area Scan	Zoom Scan
Date	2021-08-20	2021-08-20
psSAR1g [W/kg]	0.514	0.555
psSAR10g [W/kg]	0.163	0.168
Power Drift [dB]		-0.06
Power Scaling	Disabled	Disabled
Factor [dB]		
M2/M1 [%]		52.7
Dist 3dB Peak [mm]		6.1



7)

KCTL Inc.

Measurement Report for NP950XDC, BACK, Custom Band 802.11 ax, UID 10755 AAC, Channel 143  
(6665.0MHz)

#### Device under Test Properties

Model, Manufacturer	Dimensions [mm]	IMEI	DUT Type
NP950XDC, SAMSUNG	354.0 x 226.0 x 12.0	1GH591ZR100119F	Laptop + Main Antenna

#### Exposure Conditions

Phantom Section, TSL	Position, Test Distance [mm]	Band	Group, UID	Frequency [MHz], Channel Number	Conversion Factor	TSL Conductivity [S/m]	TSL Permittivity
Flat, HSL	BACK, 0.00	Custom Band	CW, 10755-AAC	6665.0, 143	5.25	6.46	33.2

#### Hardware Setup

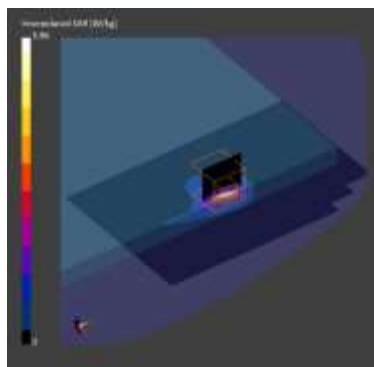
Phantom	TSL, Measured Date	Probe, Calibration Date	DAE, Calibration Date
Front_Left_ELI V8.0 - 2097	HBBL-600-10000, 2021-Aug-21	EX3DV4 - SN3865, 2021-01-25	DAE4 Sn1586, 2021-04-27

#### Scan Setup

	Area Scan	Zoom Scan
Grid Extents [mm]	102.0 x 153.0	22.0 x 22.0 x 22.0
Grid Steps [mm]	8.5 x 8.5	3.4 x 3.4 x 1.4
Sensor Surface [mm]	3.0	1.4
Graded Grid	Yes	Yes
Grading Ratio	1.5	1.4
MAIA	Y	N/A
Surface Detection	VMS + 6p	VMS + 6p
Scan Method	Measured	Measured

#### Measurement Results

	Area Scan	Zoom Scan
Date	2021-08-21	2021-08-21
psSAR1g [W/kg]	1.29	1.16
psSAR10g [W/kg]	0.387	0.348
Power Drift [dB]		-0.07
Power Scaling	Disabled	Disabled
Factor [dB]		
M2/M1 [%]		51.5
Dist 3dB Peak [mm]		6.1



8)

KCTL Inc.

Measurement Report for NP950XDC, BACK, Custom Band 802.11 ax, UID 10755 AAC, Channel 125  
(6825.0MHz)

#### Device under Test Properties

Model, Manufacturer	Dimensions [mm]	IMEI	DUT Type
NP950XDC, SAMSUNG	354.0 x 226.0 x 12.0	1GH591ZR100119F	Laptop + Aux Antenna

#### Exposure Conditions

Phantom Section, TSL	Position, Test Distance [mm]	Band	Group, UID	Frequency [MHz], Channel Number	Conversion Factor	TSL Conductivity [S/m]	TSL Permittivity
Flat, HSL	BACK, 0.00	Custom Band	CW, 10755-AAC	6825.0, 125	5.25	6.68	32.9

#### Hardware Setup

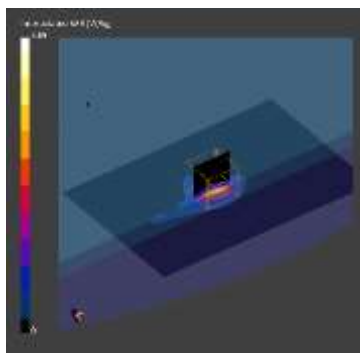
Phantom	TSL, Measured Date	Probe, Calibration Date	DAE, Calibration Date
Front_Left_ELI V8.0 - 2097	HBBL-600-10000, 2021- Aug-21	EX3DV4 - SN3865, 2021- 01-25	DAE4 Sn1586, 2021-04- 27

#### Scan Setup

	Area Scan	Zoom Scan
Grid Extents [mm]	102.0 x 153.0	22.0 x 22.0 x 22.0
Grid Steps [mm]	8.5 x 8.5	3.4 x 3.4 x 1.4
Sensor Surface [mm]	3.0	1.4
Graded Grid	Yes	Yes
Grading Ratio	1.5	1.4
MAIA	Y	Y
Surface Detection	VMS + 6p	VMS + 6p
Scan Method	Measured	Measured

#### Measurement Results

	Area Scan	Zoom Scan
Date	2021-08-21	2021-08-21
psSAR1g [W/kg]	0.658	0.650
psSAR10g [W/kg]	0.190	0.186
Power Drift [dB]		0.10
Power Scaling	Disabled	Disabled
Factor [dB]		
M2/M1 [%]		48.8
Dist 3dB Peak [mm]		5.5



9)

**KCTL Inc.**

**Measurement Report for NP950XDC, BACK, Custom Band 802.11 ax, UID 10755 AAC, Channel 143 (6665.0MHz)**

#### Device under Test Properties

Model, Manufacturer	Dimensions [mm]	IMEI	DUT Type
NP950XDC, SAMSUNG	354.0 x 226.0 x 12.0	1GH591ZR100119F	Laptop + MIMO Antenna

#### Exposure Conditions

Phantom Section, TSL	Position, Test Distance [mm]	Band	Group, UID	Frequency [MHz], Channel Number	Conversion Factor	TSL Conductivity [S/m]	TSL Permittivity
Flat, HSL	BACK, 0.00	Custom Band	CW, 10755-AAC	6665.0, 143	5.25	6.46	33.2

#### Hardware Setup

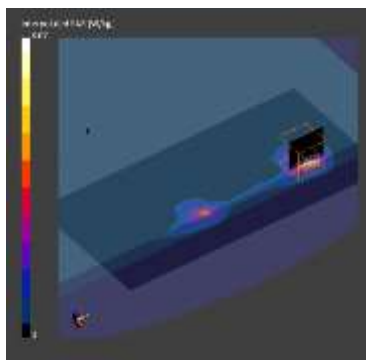
Phantom	TSL, Measured Date	Probe, Calibration Date	DAE, Calibration Date
Front_Left_ELI V8.0 - 2097	HBBL-600-10000, 2021-Aug-21	EX3DV4 - SN3865, 2021-01-25	DAE4 Sn1586, 2021-04-27

#### Scan Setup

	Area Scan	Zoom Scan
Grid Extents [mm]	102.0 x 204.0	22.0 x 22.0 x 22.0
Grid Steps [mm]	8.5 x 8.5	3.4 x 3.4 x 1.4
Sensor Surface [mm]	3.0	1.4
Graded Grid	Yes	Yes
Grading Ratio	1.5	1.4
MAIA	Y	Y
Surface Detection	VMS + 6p	VMS + 6p
Scan Method	Measured	Measured

#### Measurement Results

	Area Scan	Zoom Scan
Date	2021-08-21	2021-08-21
psSAR1g [W/kg]	0.554	0.591
psSAR10g [W/kg]	0.177	0.179
Power Drift [dB]		-0.07
Power Scaling	Disabled	Disabled
Factor [dB]		
M2/M1 [%]		50.6
Dist 3dB Peak [mm]		6.7



10)

KCTL Inc.

Measurement Report for NP950XDC, BACK, Custom Band 802.11 ax, UID 10755 AAC, Channel 207  
(6985.0MHz)

#### Device under Test Properties

Model, Manufacturer	Dimensions [mm]	IMEI	DUT Type
NP950XDC, SAMSUNG	354.0 x 226.0 x 12.0	1GH591ZR100119F	Laptop + Main Antenna

#### Exposure Conditions

Phantom Section, TSL	Position, Test Distance [mm]	Band	Group, UID	Frequency [MHz], Channel Number	Conversion Factor	TSL Conductivity [S/m]	TSL Permittivity
Flat, HSL	BACK, 0.00	Custom Band	CW, 10755-AAC	6985.0, 207	5.3	6.92	32.8

#### Hardware Setup

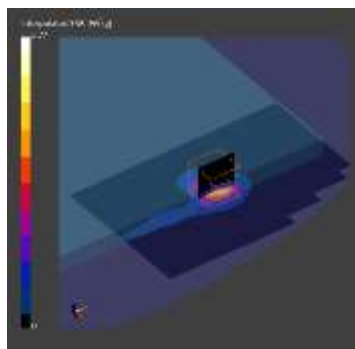
Phantom	TSL, Measured Date	Probe, Calibration Date	DAE, Calibration Date
Front_Left_ELI V8.0 - 2097	HBBL-600-10000, 2021-Aug-24	EX3DV4 - SN3865, 2021-01-25	DAE4 Sn1586, 2021-04-27

#### Scan Setup

	Area Scan	Zoom Scan
Grid Extents [mm]	102.0 x 153.0	22.0 x 22.0 x 22.0
Grid Steps [mm]	8.5 x 8.5	3.4 x 3.4 x 1.4
Sensor Surface [mm]	3.0	1.4
Graded Grid	Yes	Yes
Grading Ratio	1.5	1.4
MAIA	Y	Y
Surface Detection	VMS + 6p	VMS + 6p
Scan Method	Measured	Measured

#### Measurement Results

	Area Scan	Zoom Scan
Date	2021-08-24	2021-08-24
psSAR1g [W/kg]	0.702	0.713
psSAR10g [W/kg]	0.225	0.227
Power Drift [dB]		-0.06
Power Scaling	Disabled	Disabled
Factor [dB]		
M2/M1 [%]		49.3
Dist 3dB Peak [mm]		6.8



11)

KCTL Inc.

Measurement Report for NP950XDC, BACK, Custom Band 802.11 ax, UID 10755 AAC, Channel 207  
(6985.0MHz)

#### Device under Test Properties

Model, Manufacturer	Dimensions [mm]	IMEI	DUT Type
NP950XDC, SAMSUNG	354.0 x 226.0 x 12.0	1GH591ZR100119F	Laptop + Aux Antenna

#### Exposure Conditions

Phantom Section, TSL	Position, Test Distance [mm]	Band	Group, UID	Frequency [MHz], Channel Number	Conversion Factor	TSL Conductivity [S/m]	TSL Permittivity
Flat, HSL	BACK, 0.00	Custom Band	CW, 10755-AAC	6985.0, 207	5.3	6.91	32.8

#### Hardware Setup

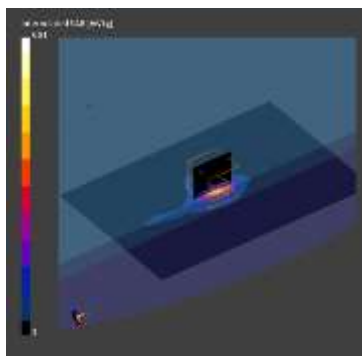
Phantom	TSL, Measured Date	Probe, Calibration Date	DAE, Calibration Date
Front_Left_ELI V8.0 - 2097	HBBL-600-10000, 2021- Aug-21	EX3DV4 - SN3865, 2021- 01-25	DAE4 Sn1586, 2021-04- 27

#### Scan Setup

	Area Scan	Zoom Scan
Grid Extents [mm]	102.0 x 153.0	22.0 x 22.0 x 22.0
Grid Steps [mm]	8.5 x 8.5	3.4 x 3.4 x 1.4
Sensor Surface [mm]	3.0	1.4
Graded Grid	Yes	Yes
Grading Ratio	1.5	1.4
MAIA	Y	Y
Surface Detection	VMS + 6p	VMS + 6p
Scan Method	Measured	Measured

#### Measurement Results

	Area Scan	Zoom Scan
Date	2021-08-21	2021-08-21
psSAR1g [W/kg]	0.689	0.665
psSAR10g [W/kg]	0.192	0.187
Power Drift [dB]		0.08
Power Scaling	Disabled	Disabled
Factor [dB]		
M2/M1 [%]		48.5
Dist 3dB Peak [mm]		5.8





12)

**KCTL Inc.**

**Measurement Report for NP950XDC, BACK, Custom Band 802.11 ax, UID 10755 AAC, Channel 207 (6985.0MHz)**

#### Device under Test Properties

Model, Manufacturer	Dimensions [mm]	IMEI	DUT Type
NP950XDC, SAMSUNG	354.0 x 226.0 x 12.0	1GH591ZR100119F	Laptop + MIMO Antenna

#### Exposure Conditions

Phantom Section, TSL	Position, Test Distance [mm]	Band	Group, UID	Frequency [MHz], Channel Number	Conversion Factor	TSL Conductivity [S/m]	TSL Permittivity
Flat, HSL	BACK, 0.00	Custom Band	CW, 10755-AAC	6985.0, 207	5.3	6.91	32.8

#### Hardware Setup

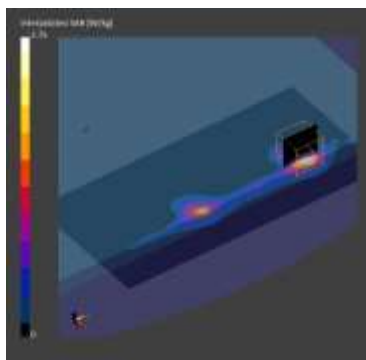
Phantom	TSL, Measured Date	Probe, Calibration Date	DAE, Calibration Date
Front_Left_ELI V8.0 - 2097	HBBL-600-10000, 2021-Aug-21	EX3DV4 - SN3865, 2021-01-25	DAE4 Sn1586, 2021-04-27

#### Scan Setup

	Area Scan	Zoom Scan
Grid Extents [mm]	102.0 x 204.0	22.0 x 22.0 x 22.0
Grid Steps [mm]	8.5 x 8.5	3.4 x 3.4 x 1.4
Sensor Surface [mm]	3.0	1.4
Graded Grid	Yes	Yes
Grading Ratio	1.5	1.4
MAIA	Y	Y
Surface Detection	VMS + 6p	VMS + 6p
Scan Method	Measured	Measured

#### Measurement Results

	Area Scan	Zoom Scan
Date	2021-08-21	2021-08-21
psSAR1g [W/kg]	0.458	0.500
psSAR10g [W/kg]	0.150	0.153
Power Drift [dB]		-0.08
Power Scaling	Disabled	Disabled
Factor [dB]		
M2/M1 [%]		49.3
Dist 3dB Peak [mm]		6.1



## 14.2 PD Test System Verification and Test Results

KCTL Inc.

Measurement Report for 10 GHz Verification Source, FRONT, Validation band, UID 0 -, Channel 10000 (10000.0MHz)

### Device Under Test Properties

Model, Manufacturer	Dimensions [mm]	IMEI	DUT Type
10 GHz Verification Source, Speag	100.0 x 172.0 x 100.0	1023	Validation Dipole

### Exposure Conditions

Phantom Section	Position, Test Distance [mm]	Frequency [MHz], Channel Number	Conversion Factor
5G	FRONT, 10.00	10000.0, 10000	1.0

### Hardware Setup

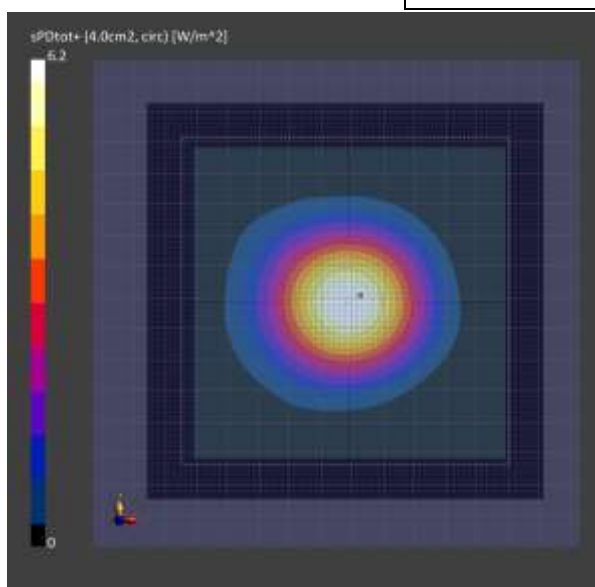
Phantom	Medium	Probe, Calibration Date	DAE, Calibration Date
mmWave	Air	EUmmWV4 - SN9489_F1-55GHz, 2021-05-28	DAE4 Sn1342, 2021-06-02

### Scans Setup

#### Measurement Results

Scan Type	5G Scan
Grid Extents [mm]	120.0 x 120.0
Grid Steps [lambda]	0.25 x 0.25
Sensor Surface [mm]	10.0
MAIA	N/A

Scan Type	5G Scan
Date	2021-08-23
Avg. Area [cm <sup>2</sup> ]	4.00
psPDn+ [W/m <sup>2</sup> ]	6.18
psPDtot+ [W/m <sup>2</sup> ]	6.20
E <sub>max</sub> [V/m]	51.5
Power Drift [dB]	-0.03



**KCTL Inc.**

**Measurement Report for 10 GHz Verification Source, FRONT, Validation band, UID 0 -, Channel 10000 (10000.0MHz)**

**Device Under Test Properties**

Model, Manufacturer	Dimensions [mm]	IMEI	DUT Type
10 GHz Verification Source, Speag	100.0 x 172.0 x 100.0	1023	Validation Dipole

**Exposure Conditions**

Phantom Section	Position, Test Distance [mm]	Frequency [MHz], Channel Number	Conversion Factor
5G	FRONT, 10.00	10000.0, 10000	1.0

**Hardware Setup**

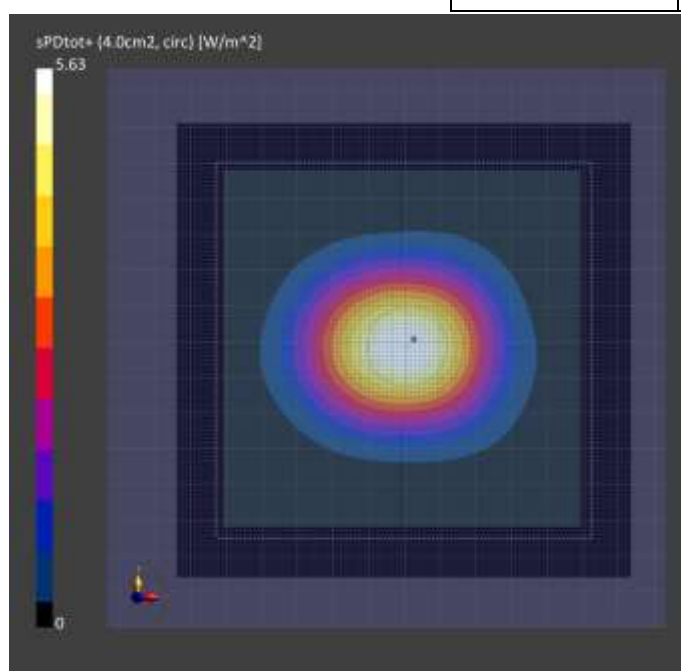
Phantom	Medium	Probe, Calibration Date	DAE, Calibration Date
mmWave	Air	EUmmWV4 - SN9489_F1-55GHz, 2021-05-28	DAE4 Sn1342, 2021-06-02

**Scans Setup**

**Measurement Results**

Scan Type	5G Scan
Grid Extents [mm]	120.0 x 120.0
Grid Steps [lambda]	0.25 x 0.25
Sensor Surface [mm]	10.0
MAIA	N/A

Scan Type	5G Scan
Date	2021-08-24
Avg. Area [cm <sup>2</sup> ]	4.00
psPDn+ [W/m <sup>2</sup> ]	5.60
psPDtot+ [W/m <sup>2</sup> ]	5.63
E <sub>max</sub> [V/m]	49.1
Power Drift [dB]	0.18



13)

**KCTL Inc.**

**Measurement Report for NP950XDC, BACK, Custom Band 802.11 ax, UID 10755 AAC, Channel 79 (6345.0MHz)**

#### Device Under Test Properties

Model, Manufacturer	Dimensions [mm]	IMEI	DUT Type
NP950XDC, SAMSUNG	226.0 x 12.0 x 354.0	1HPB91ZR200023P	Laptop + Main Antenna

#### Exposure Conditions

Phantom Section	Position, Test Distance [mm]	Frequency [MHz], Channel Number	Conversion Factor
5G	BACK, 2.00	6345.0, 79	1.0

#### Hardware Setup

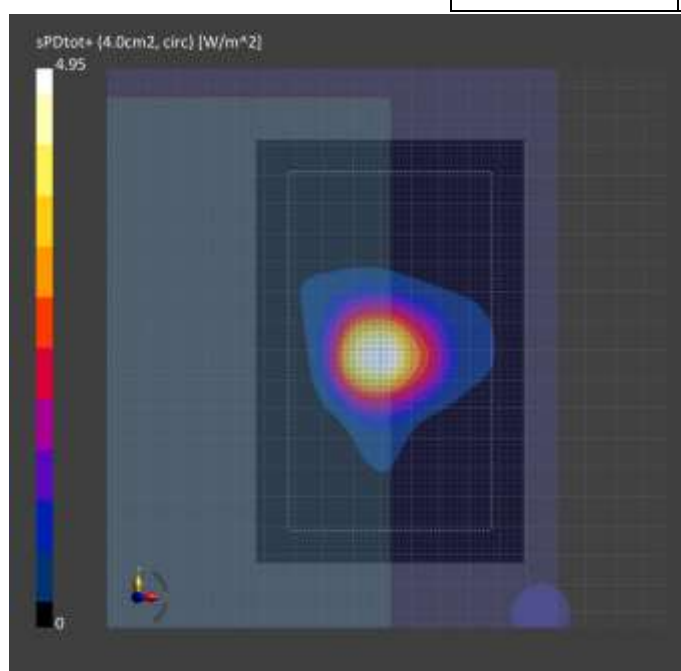
Phantom	Medium	Probe, Calibration Date	DAE, Calibration Date
mmWave	Air	EUmmWV4 - SN9489_F1-55GHz, 2021-05-28	DAE4 Sn1342, 2021-06-02

#### Scans Setup

##### Measurement Results

Scan Type	5G Scan
Grid Extents [mm]	90.0 x 140.0
Grid Steps [lambda]	0.0625 x 0.0625
Sensor Surface [mm]	2.0
MAIA	N/A

Scan Type	5G Scan
Date	2021-08-23
Avg. Area [cm <sup>2</sup> ]	4.00
psPDn+ [W/m <sup>2</sup> ]	4.19
psPDtot+ [W/m <sup>2</sup> ]	4.95
E <sub>max</sub> [V/m]	81.6
Power Drift [dB]	-0.03



14)

**KCTL Inc.**

**Measurement Report for NP950XDC, BACK, Custom Band 802.11 ax, UID 10755 AAC, Channel 111 (6505.0MHz)**

**Device Under Test Properties**

Model, Manufacturer	Dimensions [mm]	IMEI	DUT Type
NP950XDC, SAMSUNG	226.0 x 12.0 x 354.0	1HPB91ZR200023P	Laptop + Main Antenna

**Exposure Conditions**

Phantom Section	Position, Test Distance [mm]	Frequency [MHz], Channel Number	Conversion Factor
5G	BACK, 2.00	6505.0, 111	1.0

**Hardware Setup**

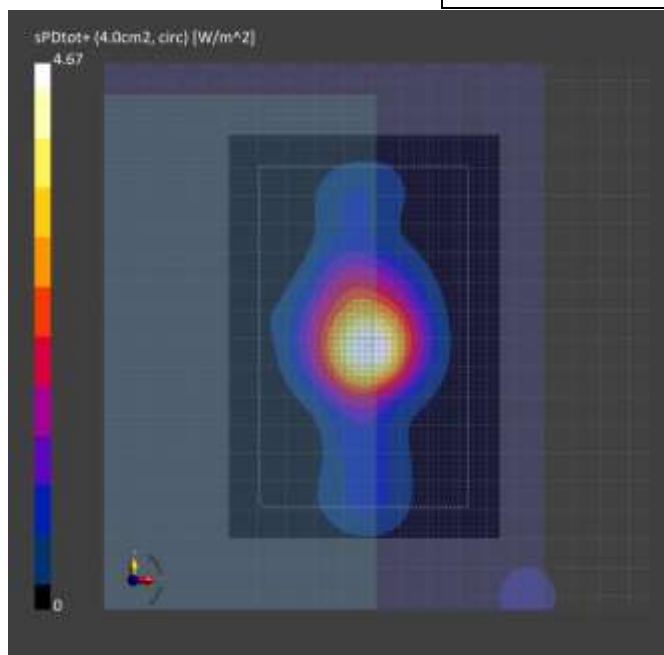
Phantom	Medium	Probe, Calibration Date	DAE, Calibration Date
mmWave	Air	EUmmWV4 - SN9489_F1-55GHz, 2021-05-28	DAE4 Sn1342, 2021-06-02

**Scans Setup**

**Measurement Results**

Scan Type	5G Scan
Grid Extents [mm]	90.0 x 140.0
Grid Steps [lambda]	0.0625 x 0.0625
Sensor Surface [mm]	2.0
MAIA	N/A

Scan Type	5G Scan
Date	2021-08-23
Avg. Area [cm <sup>2</sup> ]	4.00
psPDn+ [W/m <sup>2</sup> ]	3.97
psPDtot+ [W/m <sup>2</sup> ]	4.67
E <sub>max</sub> [V/m]	69.9
Power Drift [dB]	0.18



15)

**KCTL Inc.**

**Measurement Report for NP950XDC, BACK, Custom Band 802.11 ax, UID 10755 AAC, Channel 175 (6825.0MHz)**

**Device Under Test Properties**

Model, Manufacturer	Dimensions [mm]	IMEI	DUT Type
NP950XDC, SAMSUNG	226.0 x 12.0 x 354.0	1HPB91ZR200023P	Laptop + Main Antenna

**Exposure Conditions**

Phantom Section	Position, Test Distance [mm]	Frequency [MHz], Channel Number	Conversion Factor
5G	BACK, 2.00	6825.0, 175	1.0

**Hardware Setup**

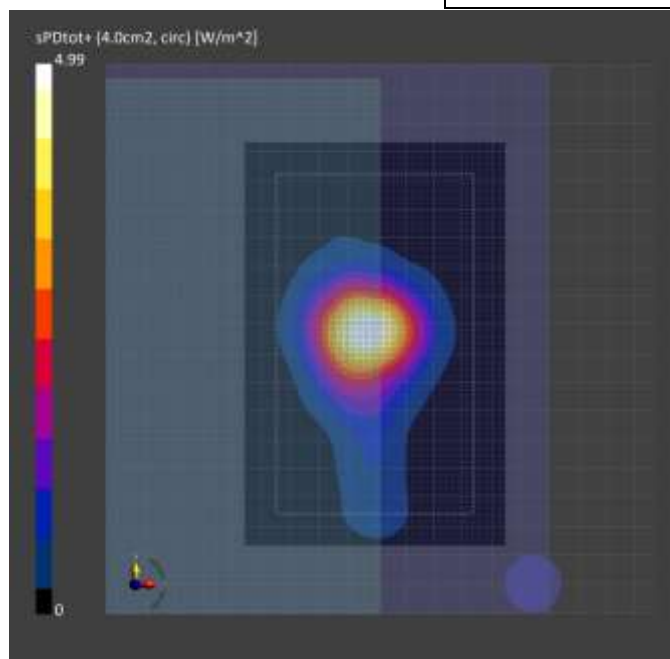
Phantom	Medium	Probe, Calibration Date	DAE, Calibration Date
mmWave	Air	EUmmWV4 - SN9489_F1-55GHz, 2021-05-28	DAE4 Sn1342, 2021-06-02

**Scans Setup**

**Measurement Results**

Scan Type	5G Scan
Grid Extents [mm]	90.0 x 140.0
Grid Steps [lambda]	0.0625 x 0.0625
Sensor Surface [mm]	2.0
MAIA	N/A

Scan Type	5G Scan
Date	2021-08-23
Avg. Area [cm <sup>2</sup> ]	4.00
psPDn+ [W/m <sup>2</sup> ]	3.86
psPDtot+ [W/m <sup>2</sup> ]	4.99
E <sub>max</sub> [V/m]	82.4
Power Drift [dB]	-0.09



16)

**KCTL Inc.**

**Measurement Report for NP950XDC, BACK, Custom Band 802.11 ax, UID 10755 AAC, Channel 207 (6985.0MHz)**

**Device Under Test Properties**

Model, Manufacturer	Dimensions [mm]	IMEI	DUT Type
NP950XDC, SAMSUNG	226.0 x 12.0 x 354.0	1HPB91ZR200023P	Laptop + Main Antenna

**Exposure Conditions**

Phantom Section	Position, Test Distance [mm]	Frequency [MHz], Channel Number	Conversion Factor
5G	BACK, 2.00	6985.0, 207	1.0

**Hardware Setup**

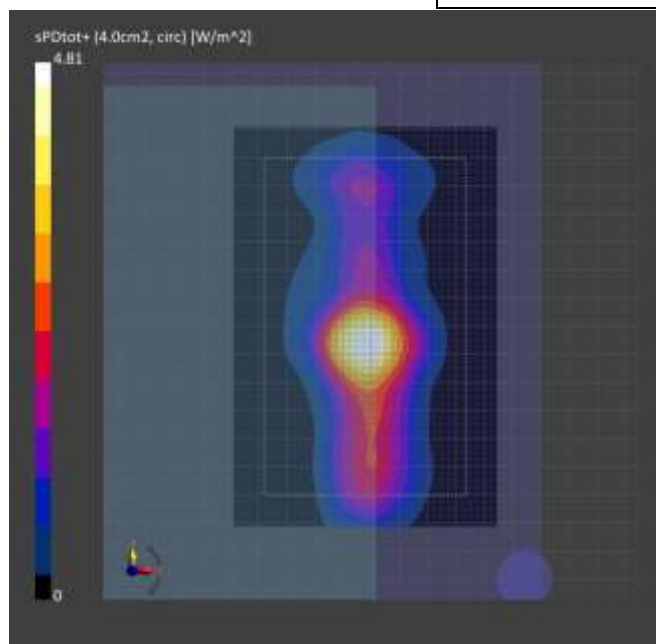
Phantom	Medium	Probe, Calibration Date	DAE, Calibration Date
mmWave	Air	EUmmWV4 - SN9489_F1-55GHz, 2021-05-28	DAE4 Sn1342, 2021-06-02

**Scans Setup**

**Measurement Results**

Scan Type	5G Scan
Grid Extents [mm]	90.0 x 140.0
Grid Steps [lambda]	0.0625 x 0.0625
Sensor Surface [mm]	2.0
MAIA	N/A

Scan Type	5G Scan
Date	2021-08-24
Avg. Area [cm <sup>2</sup> ]	4.00
psPDn+ [W/m <sup>2</sup> ]	3.74
psPDtot+ [W/m <sup>2</sup> ]	4.81
E <sub>max</sub> [V/m]	81.3
Power Drift [dB]	0.04





## Appendixes List

<b>Appendix A</b>	A.1 Probe Calibration certificate (EX3DV4_3865)
	A.2 Probe Calibration certificate (EUmmWV4_9489)
	A.3 System Calibration certificate 5G Verification Source 10 GHz_1023)
	A.4 Dipole Calibration certificate (D6.5GHzV2_SN1005)
	A.5 Justification for Extended SAR Dipole Calibrations
<b>Appendix B</b>	SAR Tissue Specification
<b>Appendix C</b>	#Antenna Location & Distance
<b>Appendix D</b>	EUT Photo
<b>Appendix E</b>	Test Setup Photo