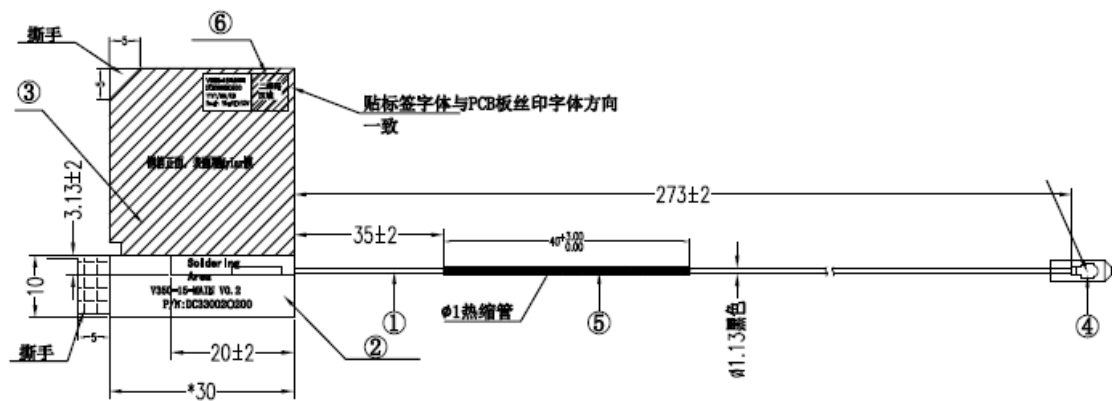


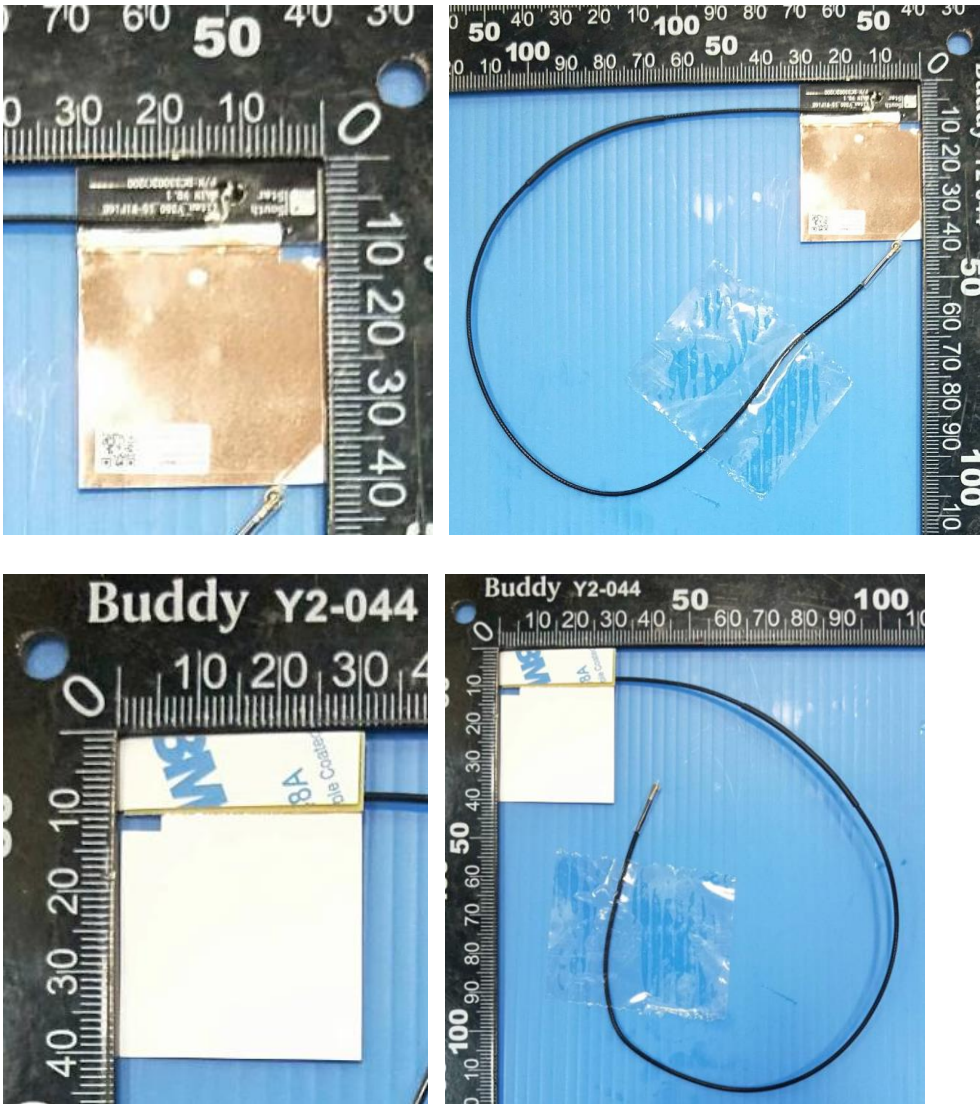
Section 2. Dimensioned Photos or Drawings of Antennas

Include a dimensioned photo and dimensioned drawing of Main antenna here.

Main Antenna Dimensioned Drawing:



Main Antenna Photo:



The four photographs show evidence items with rulers for scale. The top-left photo shows a small rectangular object with a ruler. The top-right photo shows a coiled wire with a ruler. The bottom-left photo shows a white rectangular object with a ruler. The bottom-right photo shows a coiled wire with a ruler.

Include front view photo of all 2 antennas here.

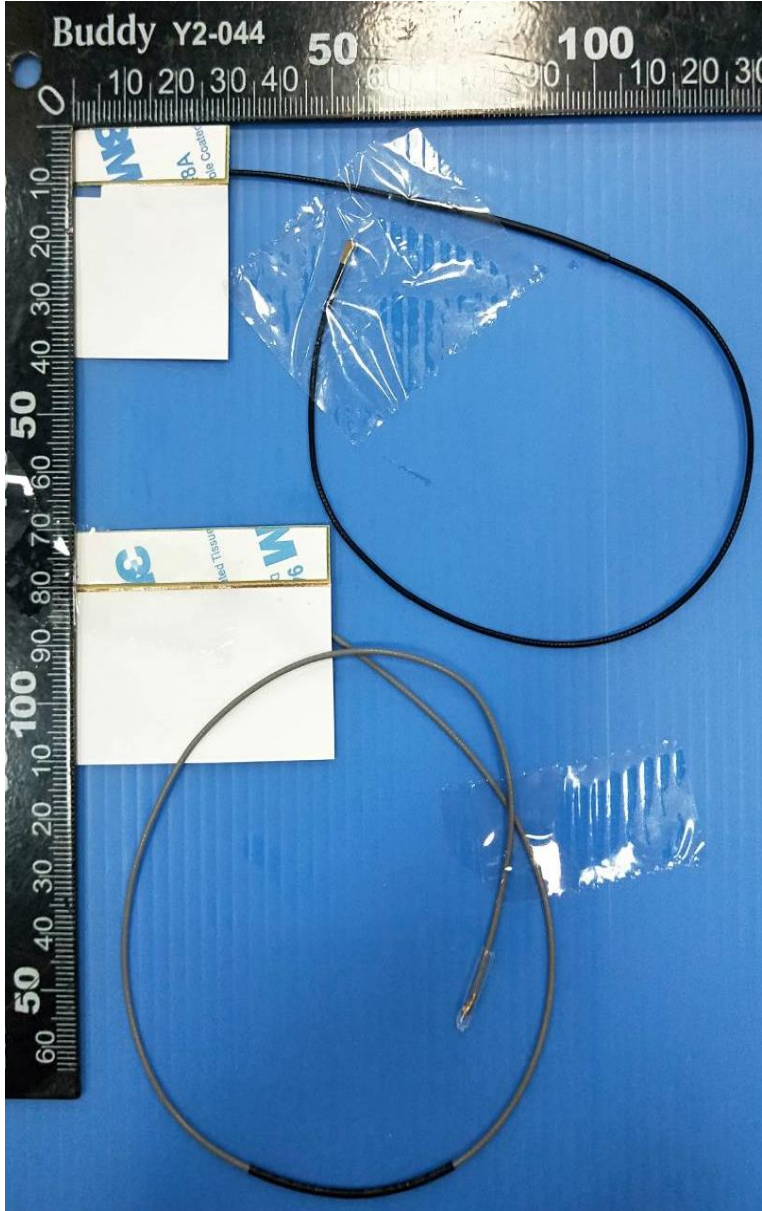
Antenna Manufacturer: N12-7952-R0A (Main and Aux)

Antenna Part Number: DC33002O000 (Main and Aux)



Include back view photo of all 2 antennas here.

Antenna Manufacturer: N12-7952-R0A (Main and Aux)
Antenna Part Number: DC33002O000 (Main and Aux)

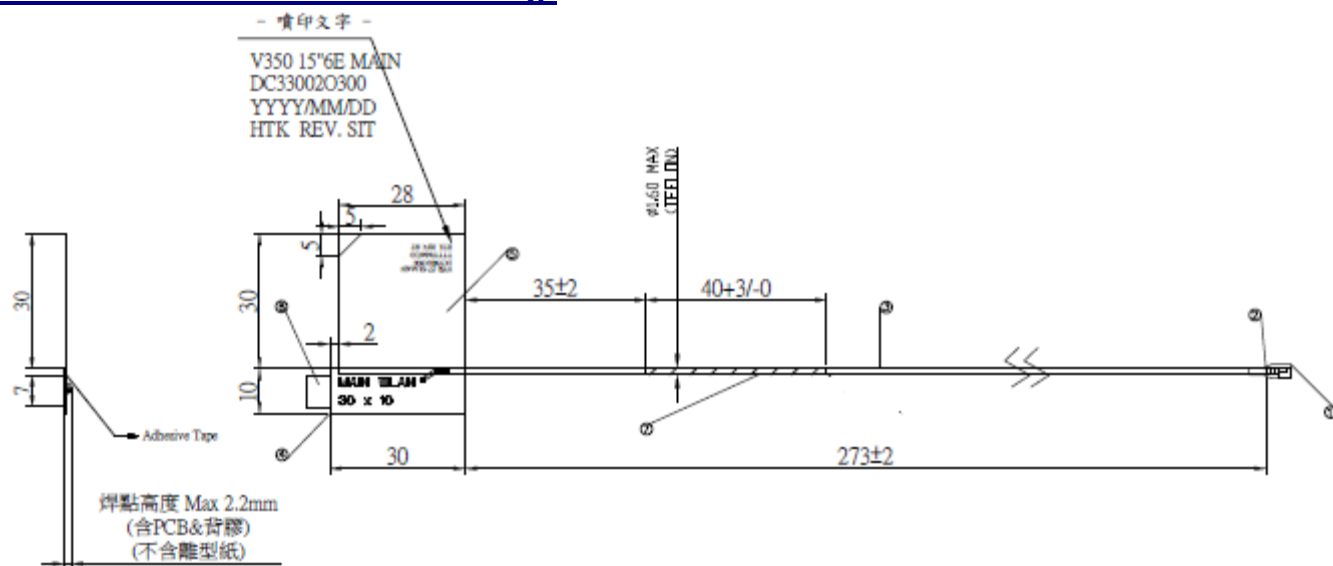


Note: antenna photo should include L type ruler

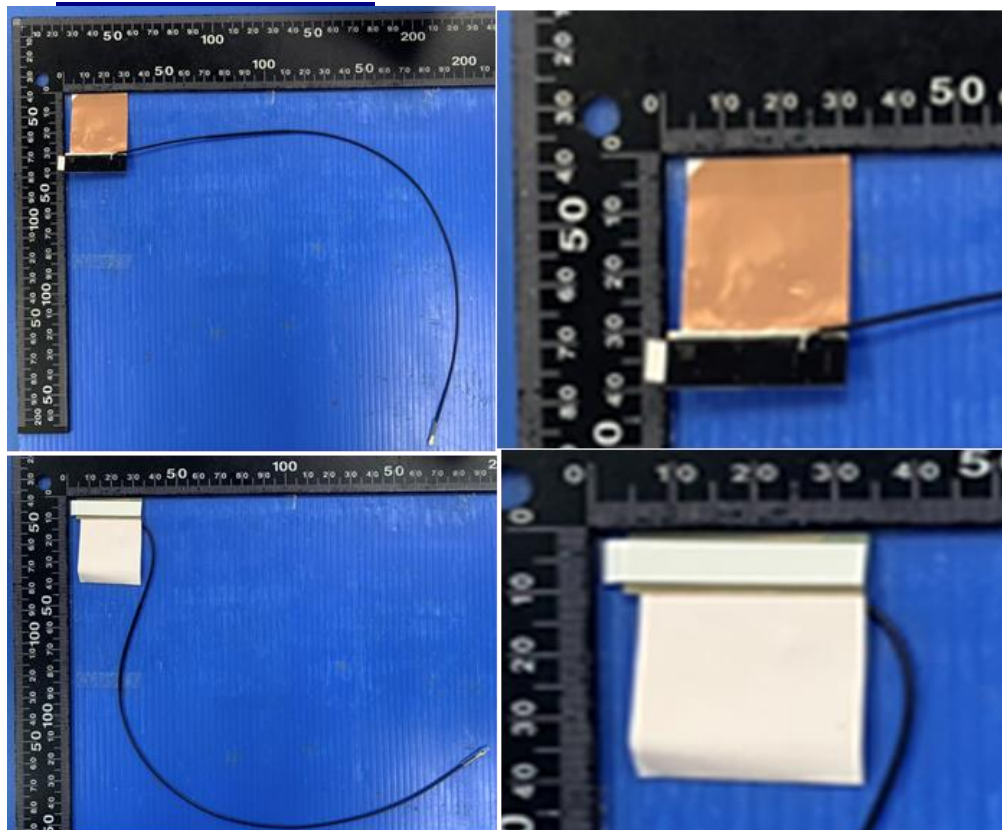
Section 2. Dimensioned Photos or Drawings of Antennas

Include a dimensioned photo and dimensioned drawing of Main antenna here.

Main Antenna Dimensioned Drawing:

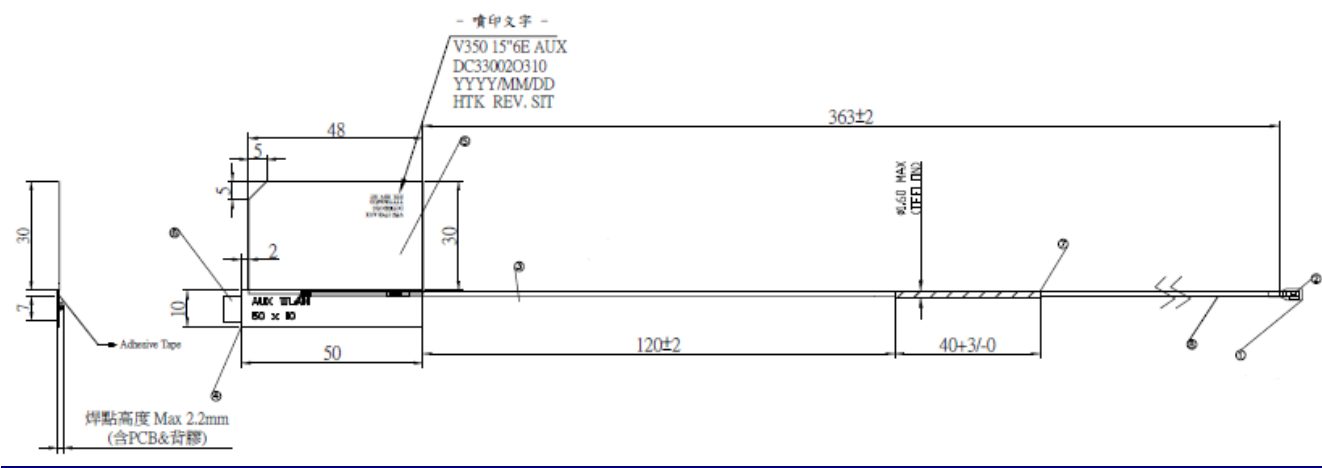


Main Antenna Photo:

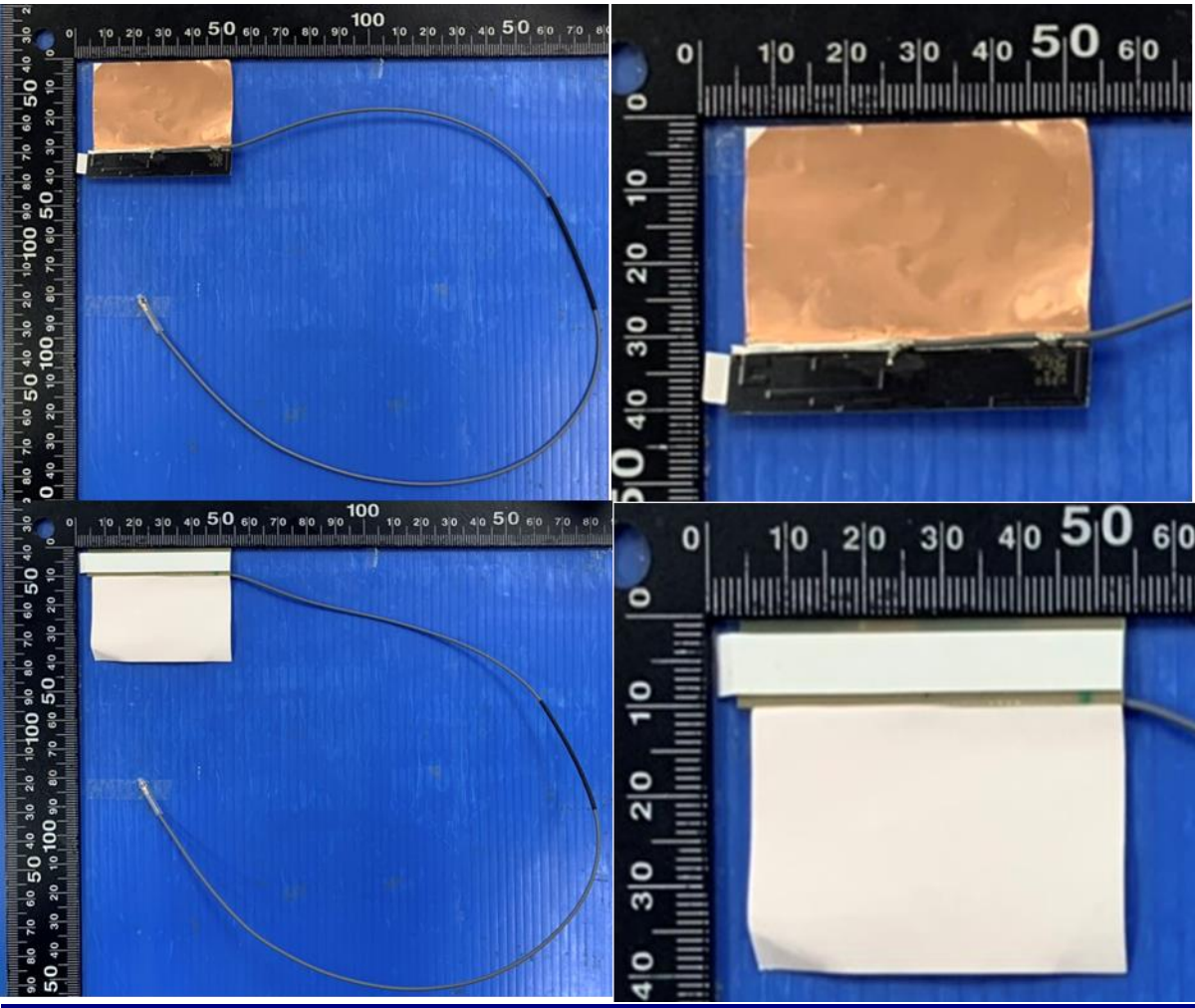


Include a dimensioned photo and dimensioned drawing of Aux antenna here.

Aux Antenna Dimensioned Drawing:



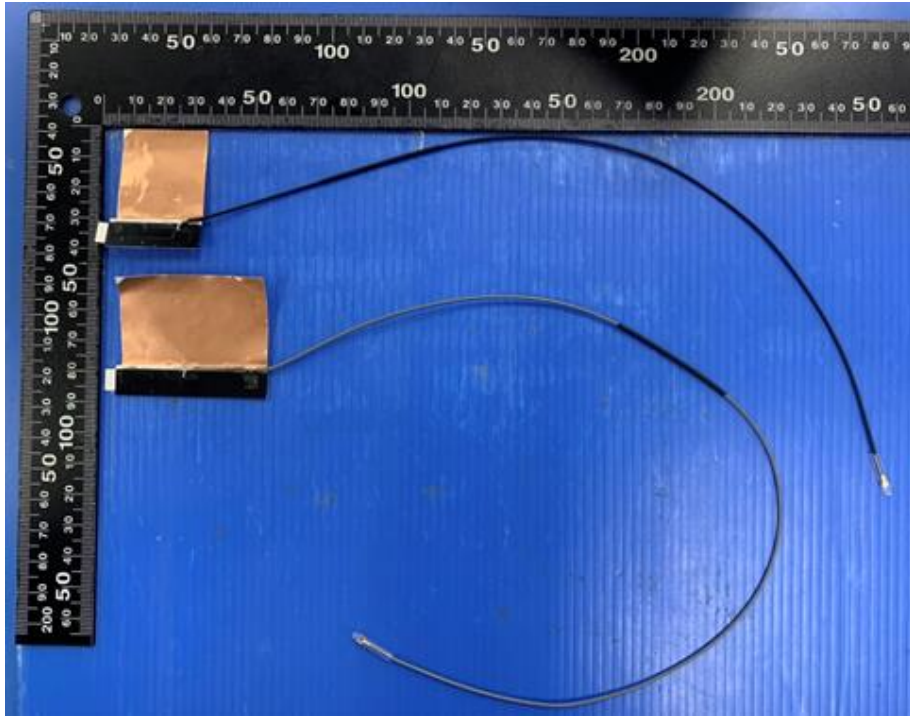
Aux Antenna Photo:



Include front view photo of all 2 antennas here.

Antenna Manufacturer: High-Tek Electronics Co., Ltd

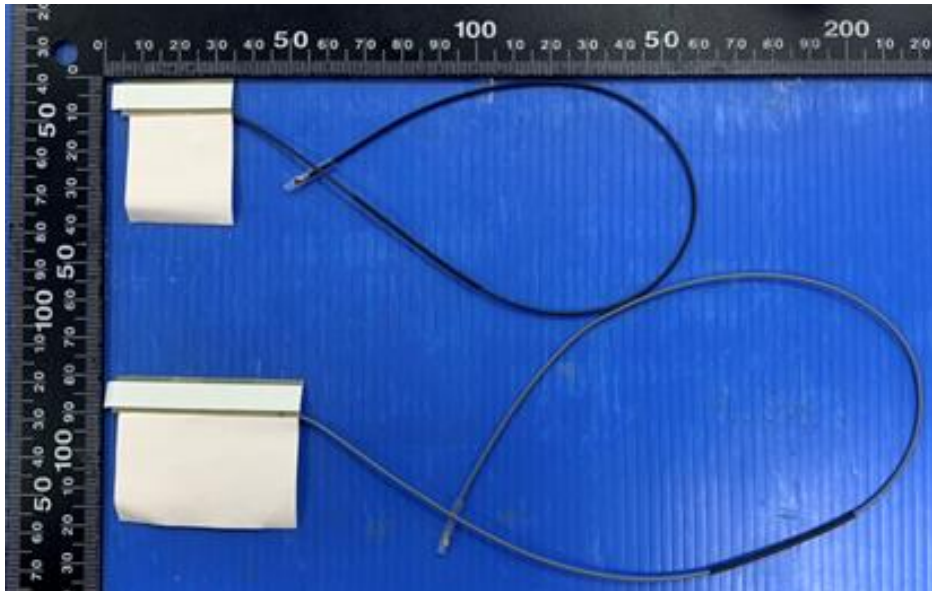
Antenna Part Number: 0ACCN021026N (Main), 0ACCN021027N (Aux)



Include back view photo of all 2 antennas here.

Antenna Manufacturer: High-Tek Electronics Co., Ltd

Antenna Part Number: 0ACCN021026N (Main), 0ACCN021027N (Aux)



Note: antenna photo should include L type ruler