




# Annex F. Photographs

## F.1 Test Sample

<p>Front Sample 05</p>  A photograph showing the front of a silver laptop, Sample 05. The laptop is closed and lying flat. A circular logo is visible in the center of the lid. The laptop is placed on a white surface with a black ruler and a 'TOLSEN' brand scale visible in the background.	<p>Front Sample 06</p>  A photograph showing the front of a silver laptop, Sample 06. The laptop is closed and lying flat. A circular logo is visible in the center of the lid. The laptop is placed on a white surface with a black ruler and a 'TOLSEN' brand scale visible in the background.
<p>Back Sample 05</p>  A photograph showing the back of a silver laptop, Sample 05. The laptop is closed and lying flat. The back of the lid features a large, rectangular, perforated area. The laptop is placed on a white surface with a black ruler and a 'TOLSEN' brand scale visible in the background.	<p>Back Sample 06</p>  A photograph showing the back of a silver laptop, Sample 06. The laptop is closed and lying flat. The back of the lid features a large, rectangular, perforated area. The laptop is placed on a white surface with a black ruler and a 'TOLSEN' brand scale visible in the background.
<p>Laptop Sample 05</p>  A photograph showing the laptop, Sample 05, open. The screen is tilted back, and the keyboard is visible. The laptop is placed on a white surface with a black ruler and a 'TOLSEN' brand scale visible in the background.	<p>Laptop Sample 06</p>  A photograph showing the laptop, Sample 06, open. The screen is tilted back, and the keyboard is visible. The laptop is placed on a white surface with a black ruler and a 'TOLSEN' brand scale visible in the background.

F.2 Test positions

Laptop	Laptop – Side view
	

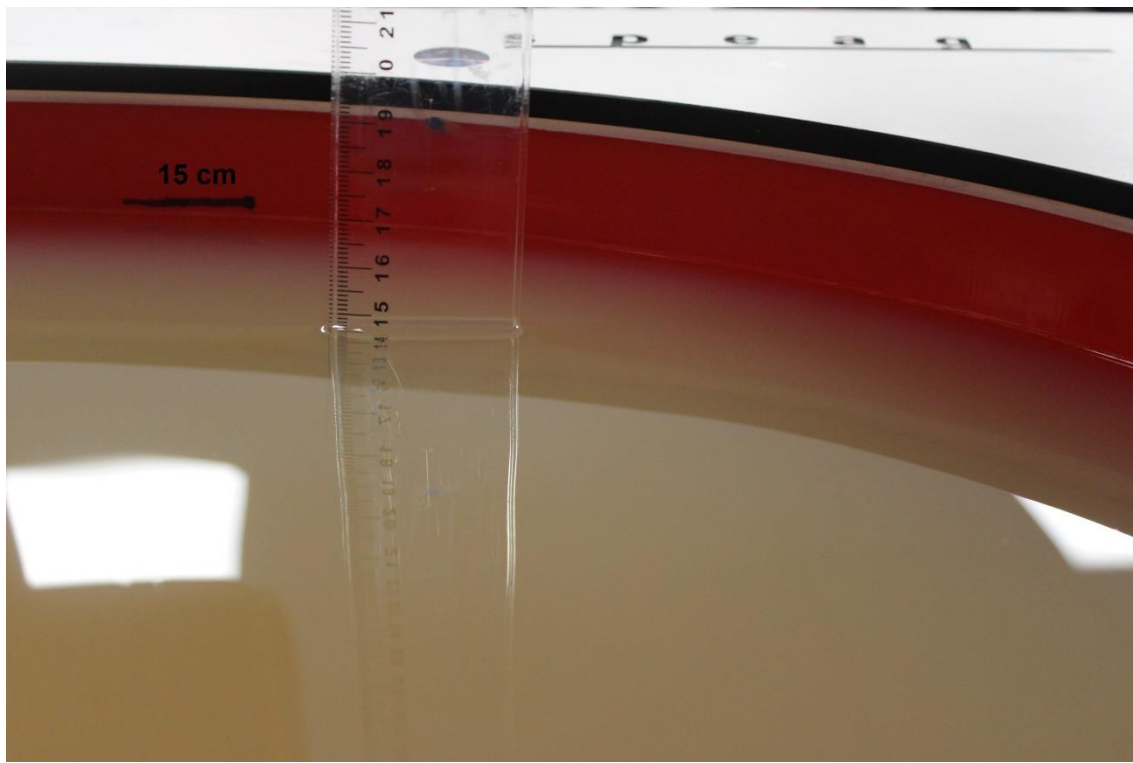
F.3      **Antenna host platform location and adjacent edge positions relative to the body**

All information (diagrams, values and dimensions) in this section are provided by the manufacturer

Antenna Host Platform location																																			
Antenna Host Platform location - 2																																			
	<table><tr><th>Item</th><th>Location</th><th>distance</th></tr><tr><td>A</td><td>SYSTEM Y</td><td>228.9</td></tr><tr><td>B</td><td>SYSTEM X</td><td>356.06</td></tr><tr><td>C</td><td>WLAN-main to edge</td><td>172.53</td></tr><tr><td>D</td><td>WLAN-main to edge</td><td>21.37</td></tr><tr><td>E</td><td>WLAN-main to edge</td><td>2.8</td></tr><tr><td>F</td><td>WLAN-aux to edge</td><td>172.53</td></tr><tr><td>G</td><td>WLAN-aux to edge</td><td>21.37</td></tr><tr><td>H</td><td>WLAN-aux to edge</td><td>2.8</td></tr><tr><td>I</td><td>WLAN-aux to WLAN-main</td><td>334.46</td></tr><tr><td>J</td><td>WLAN to table</td><td>1.38</td></tr></table>	Item	Location	distance	A	SYSTEM Y	228.9	B	SYSTEM X	356.06	C	WLAN-main to edge	172.53	D	WLAN-main to edge	21.37	E	WLAN-main to edge	2.8	F	WLAN-aux to edge	172.53	G	WLAN-aux to edge	21.37	H	WLAN-aux to edge	2.8	I	WLAN-aux to WLAN-main	334.46	J	WLAN to table	1.38	
Item	Location	distance																																	
A	SYSTEM Y	228.9																																	
B	SYSTEM X	356.06																																	
C	WLAN-main to edge	172.53																																	
D	WLAN-main to edge	21.37																																	
E	WLAN-main to edge	2.8																																	
F	WLAN-aux to edge	172.53																																	
G	WLAN-aux to edge	21.37																																	
H	WLAN-aux to edge	2.8																																	
I	WLAN-aux to WLAN-main	334.46																																	
J	WLAN to table	1.38																																	
Laptop Mode																																			

#### F.4 Phantom liquid level during measurements

ELI phantom Body liquid SAR Dasy SPEAG MBL600-6000V6 Batch - 160630-01



### **End of the report**

**This page is intentionally left blank and marks the last page of the test report.**