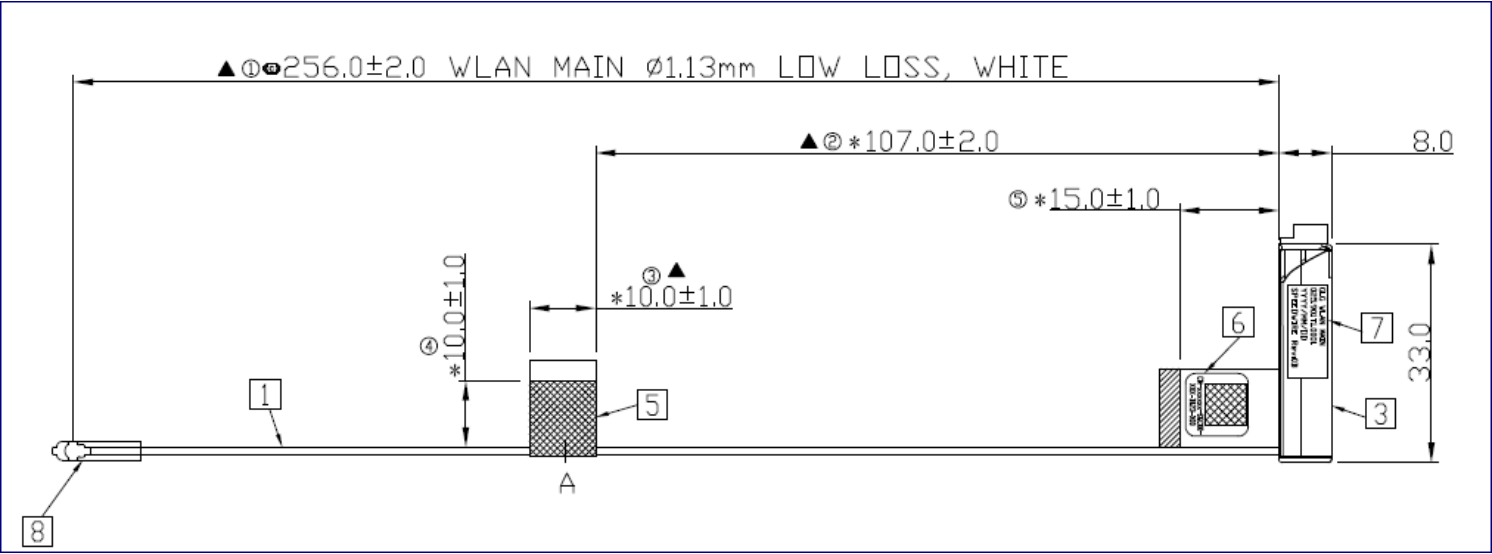


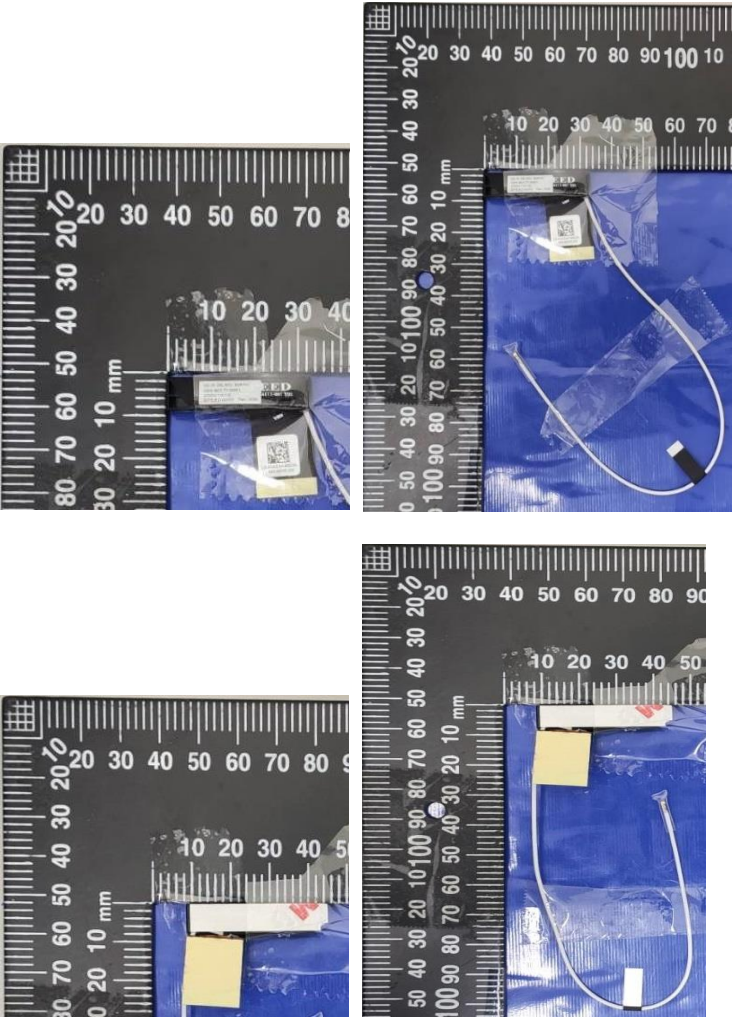
Section 2. Dimensioned Photos or Drawings of Antennas

Include a dimensioned photo and dimensioned drawing of Main antenna here.

Main Antenna Dimensioned Drawing:

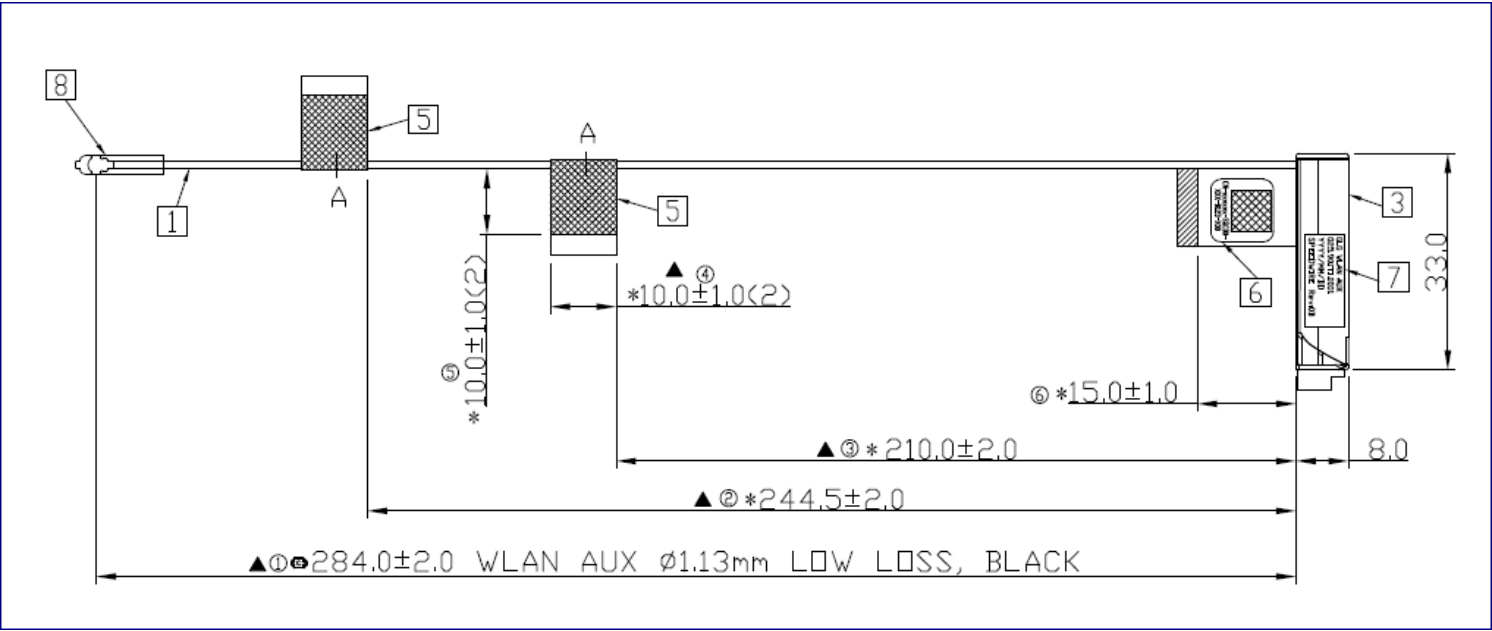


Main Antenna Photo:

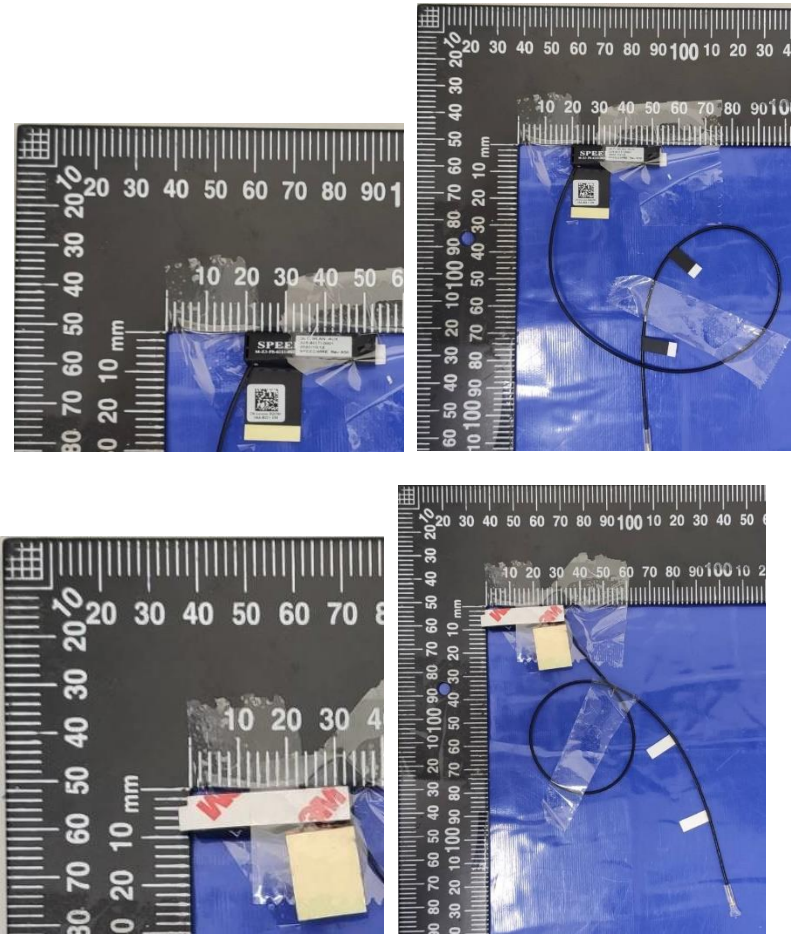


Include a dimensioned photo and dimensioned drawing of Aux antenna here.

Aux Antenna Dimensioned Drawing:



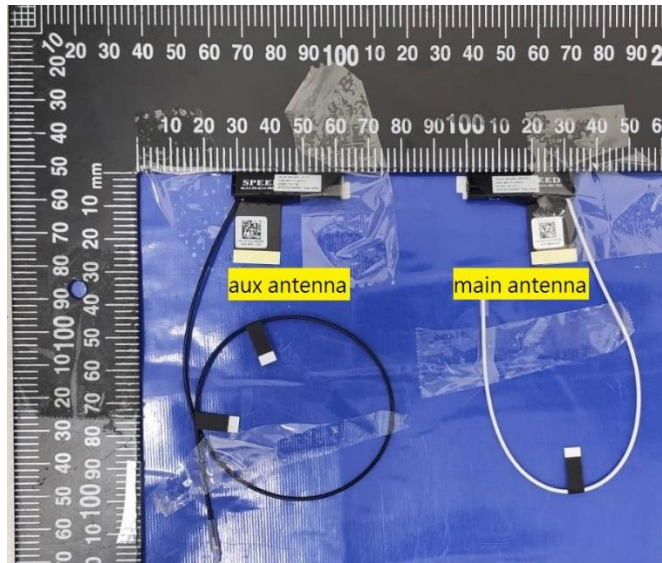
Aux Antenna Photo:



**Include front view photo of all 2 antennas here.**

Antenna Manufacturer: SPEED

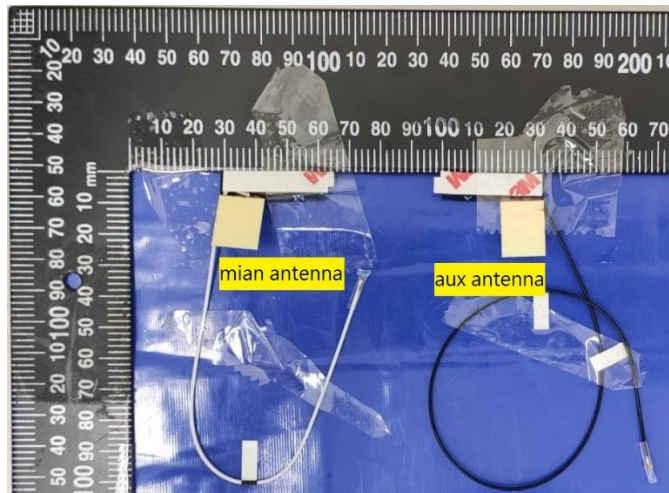
Antenna Part Number: F-0G-FS-6111-001-00 (Main), F-0G-FS-6111-002-00 (Aux)



**Include back view photo of all 2 antennas here.**

Antenna Manufacturer: SPEED

Antenna Part Number: F-0G-FS-6111-001-00 (Main), F-0G-FS-6111-002-00 (Aux)

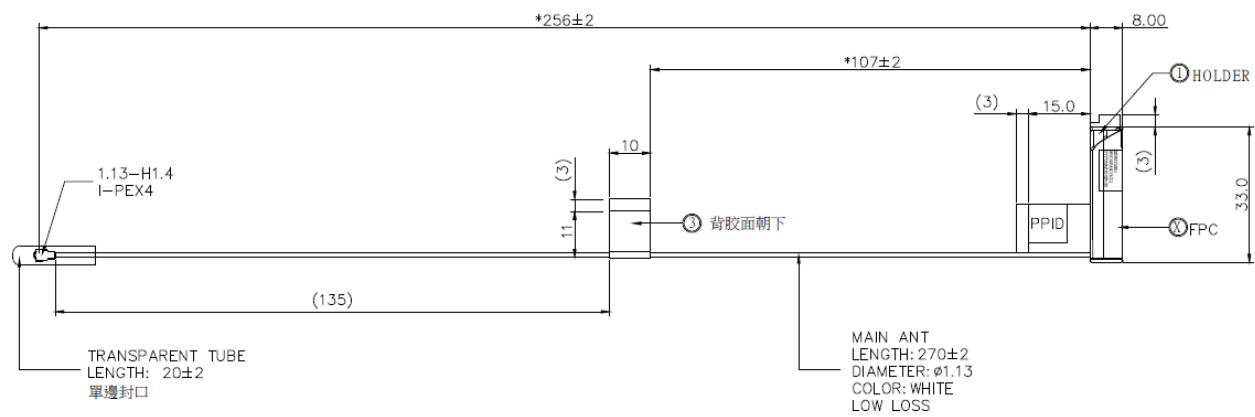


**Note: antenna photo should include L type ruler**

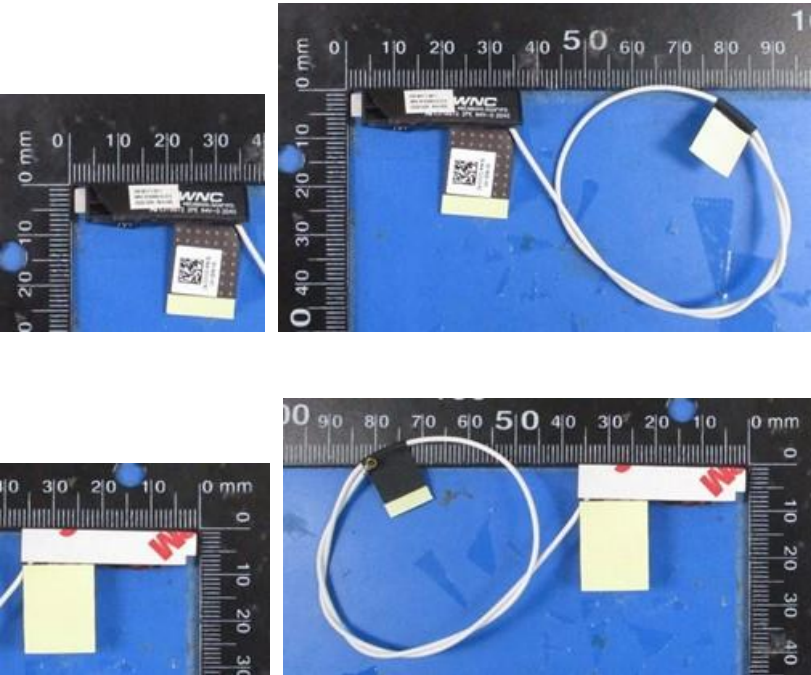
Section 2. Dimensioned Photos or Drawings of Antennas

Include a dimensioned photo and dimensioned drawing of Main antenna here.

Main Antenna Dimensioned Drawing:



Main Antenna Photo:





TRANSPARENT TUBE  
LENGTH: 20±2  
單邊封口

1.13-H1.4  
I-PEX4

(60.0)

(26) 10 (3)

10

③ 背胶面朝下

AUX ANT  
LENGTH: 298±2  
DIAMETER: Ø1.13  
COLOR: BLACK  
LOW LOSS

PPID

X FPC

(3) 15.0 (3)

33.0

① HOLDER

8.00

\*210.0±2

\*244.5±2

\*284±2

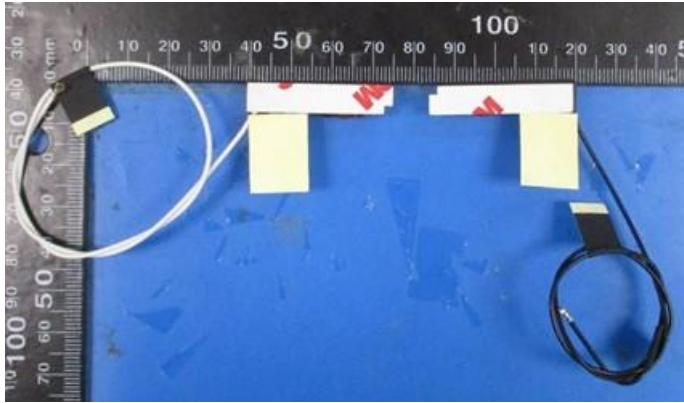
Figure 7 shows the front view of the PPID device assembly. It includes dimensions for the transparent tube (length 20±2), the main body length (210.0±2), and the total length (284±2). Key components labeled include the AUX ANT (Auxiliary Antenna), PPID (Passive Interferometric Identification Device), X FPC (Flexible Printed Circuit), and the HOLDER. The diagram also indicates the orientation of the adhesive side (背胶面朝下) and provides specific mounting dimensions.

Figure 1 consists of three photographs showing the experimental setup. (a) Top view of the device, a small black rectangular component with a QR code and a yellow label, placed on a blue surface next to a ruler. (b) Side view of the device, showing its thickness and the yellow label, also next to a ruler. (c) Close-up of the device's components, showing the QR code and the yellow label, with a ruler for scale.

**Include front view photo of all 2 antennas here.**

Antenna Manufacturer: WNC

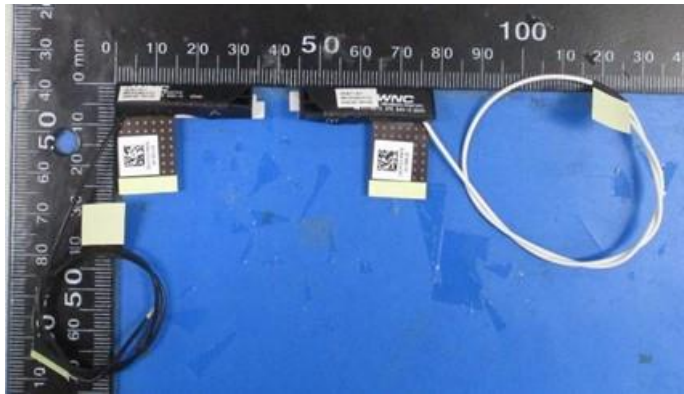
Antenna Part Number: 025.901T1.0011 (81EABG15.G12) (Main), 025.901TI.0011 (81EABG15.G27)(Aux)



**Include back view photo of all 2 antennas here.**

Antenna Manufacturer: WNC

Antenna Part Number: 025.901T1.0011 (81EABG15.G12) (Main), 025.901TI.0011 (81EABG15.G27)(Aux)



**Note: antenna photo should include L type ruler**