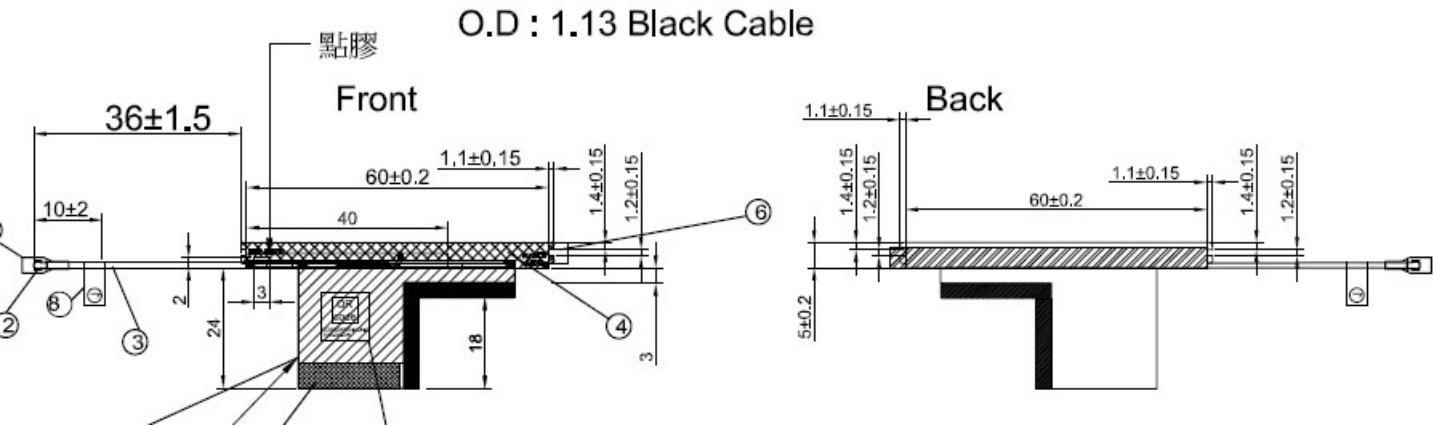


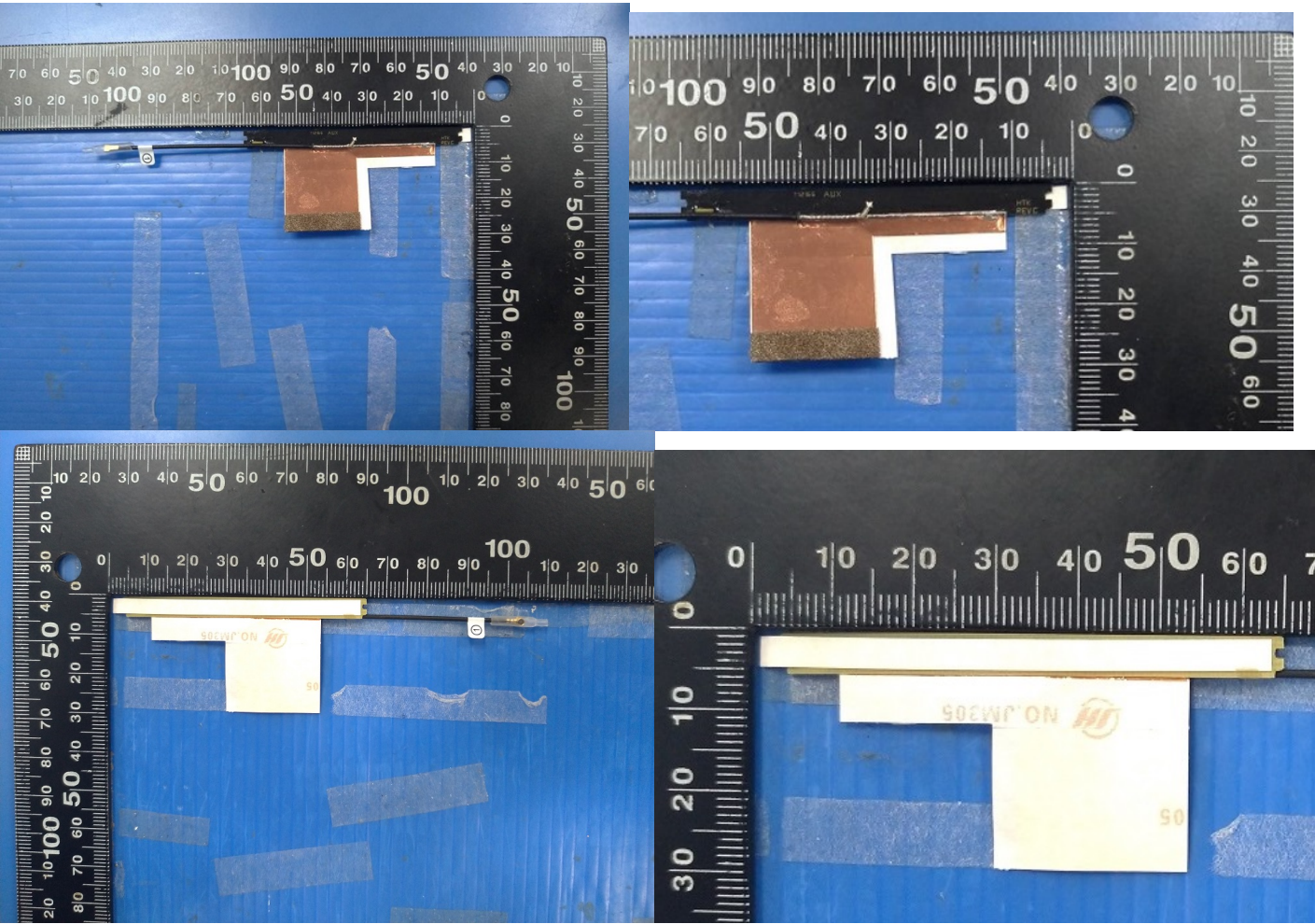
Section 2. Dimensioned Photos or Drawings of Antennas

Include a dimensioned photo and dimensioned drawing of Tx1 antenna here.

Tx1 Antenna Dimensioned Drawing:

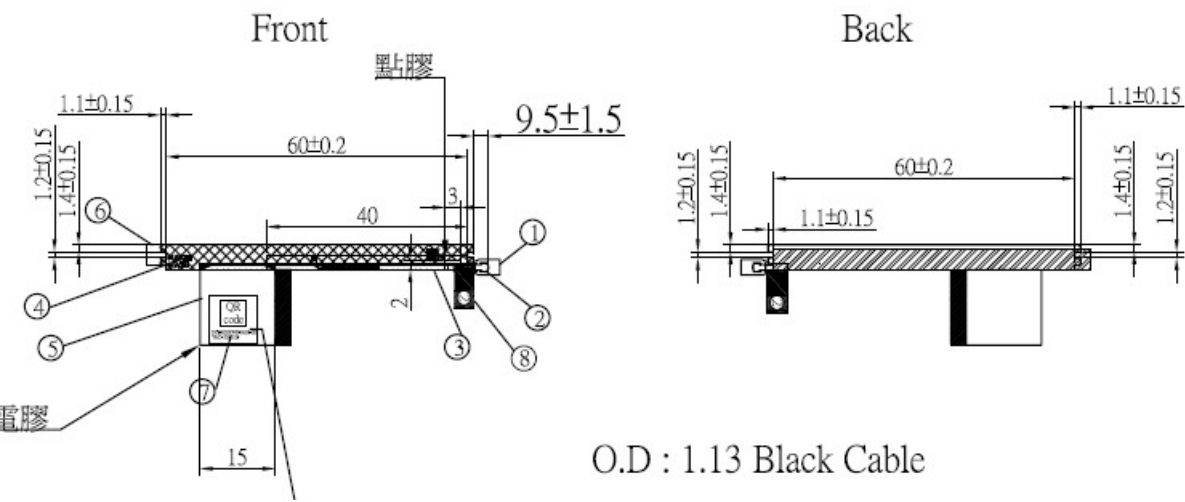


Tx1 Antenna Photo:

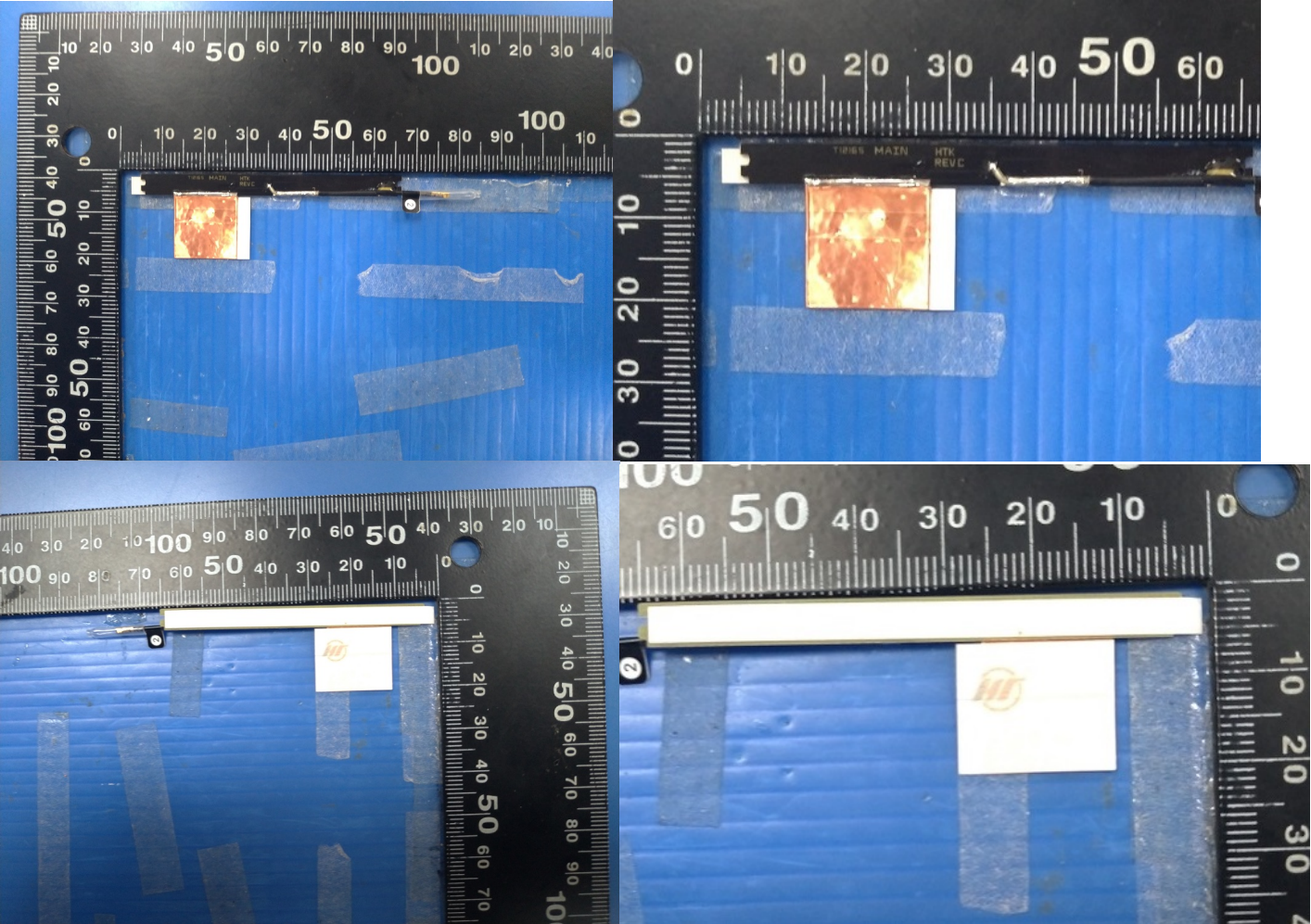


Include a dimensioned photo and dimensioned drawing of Tx2 (or Rx2) antenna here.

Tx2 (or Rx2) Antenna Dimensioned Drawing:

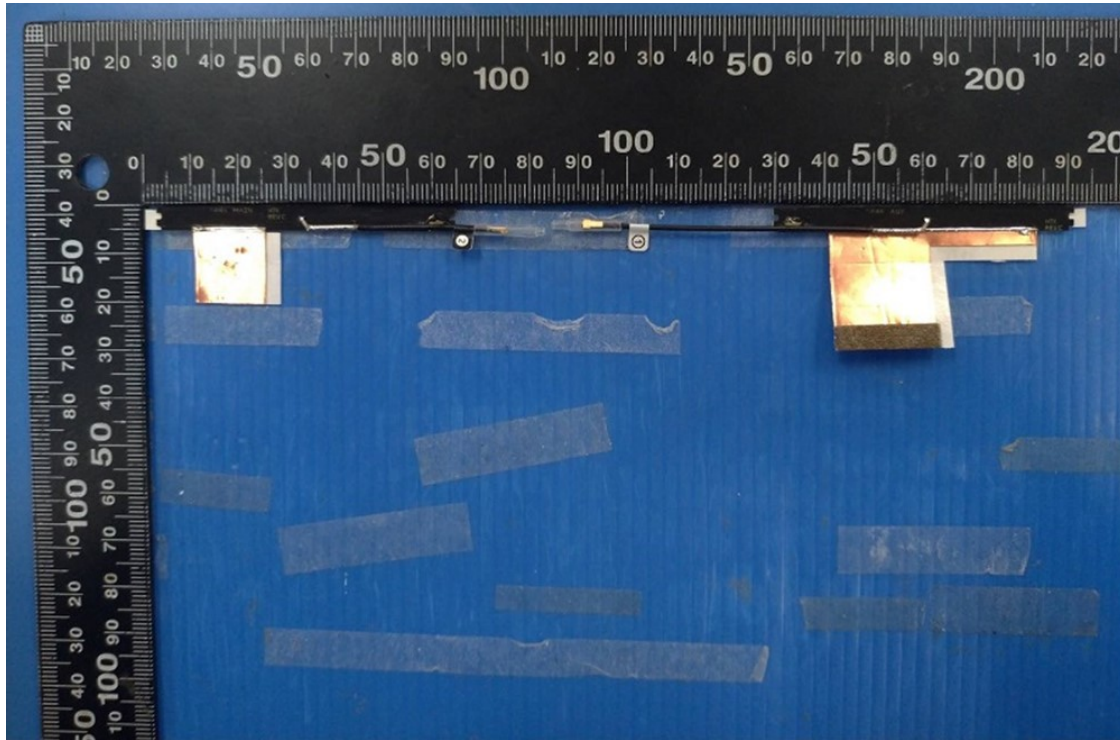


Tx2 (or Rx2) Antenna Photo:



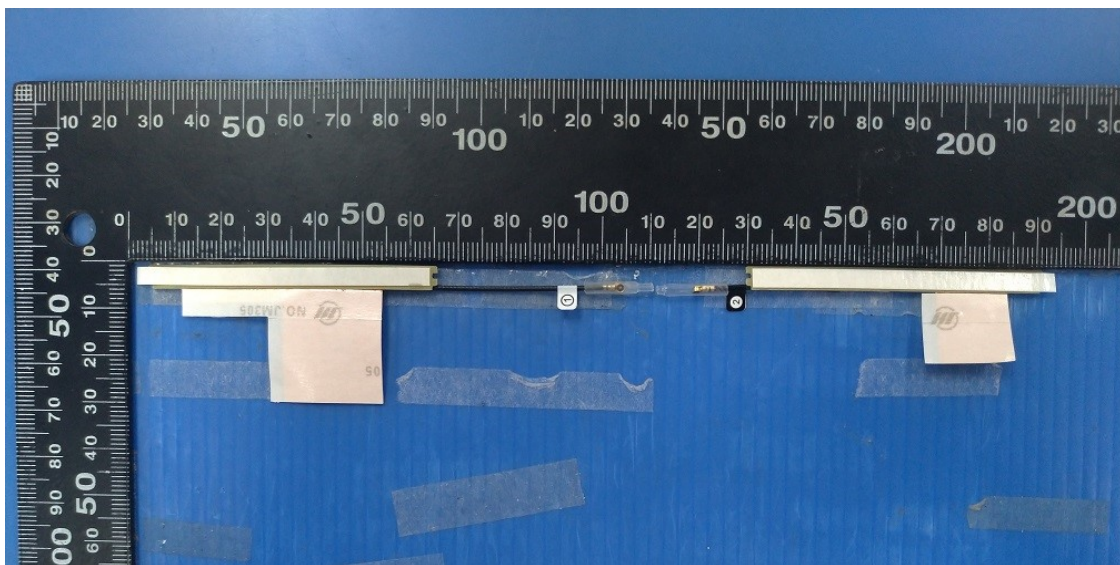
Include front view photo of all 2 antennas here.

Antenna Manufacturer: High-Tek Electronics Co., Ltd
Antenna Part Number: 0ACCN021002N (DC33002KW10)TX1 ;
0ACCN021001N (DC33002KW00) TX2/RX2



Include back view photo of all 2 antennas here.

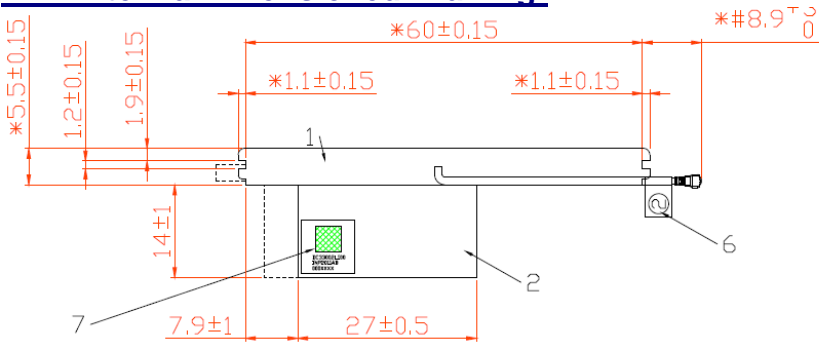
Antenna Manufacturer: High-Tek Electronics Co., Ltd
Antenna Part Number: 0ACCN021002N (DC33002KW10)TX1 ;
0ACCN021001N (DC33002KW00) TX2/RX2



Section 2. Dimensioned Photos or Drawings of Antennas

Include a dimensioned photo and dimensioned drawing of Tx1 antenna here.

Tx1 Antenna Dimensioned Drawing:

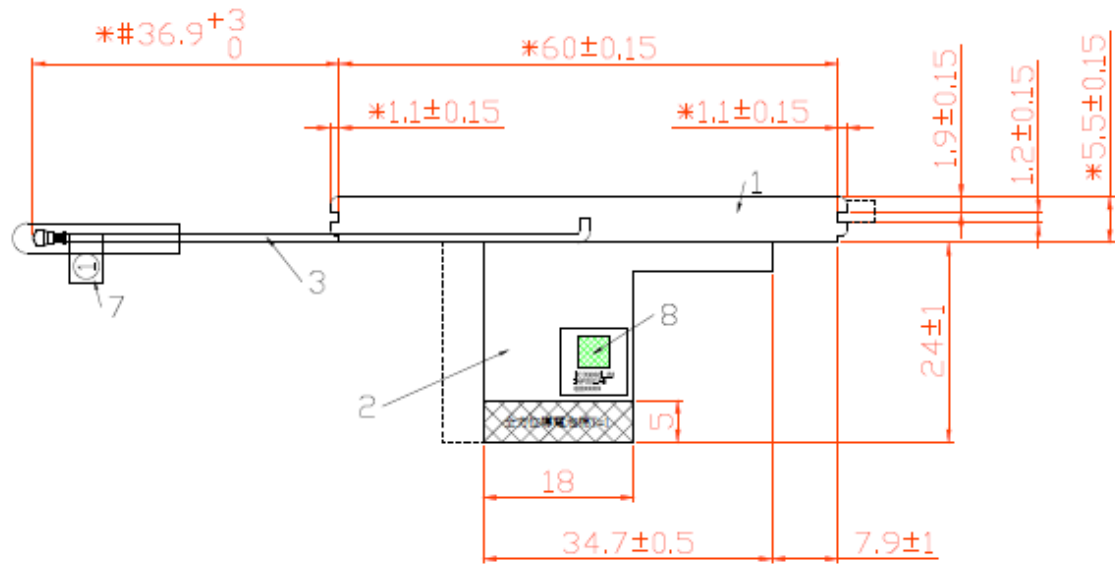


Tx1 Antenna Photo:

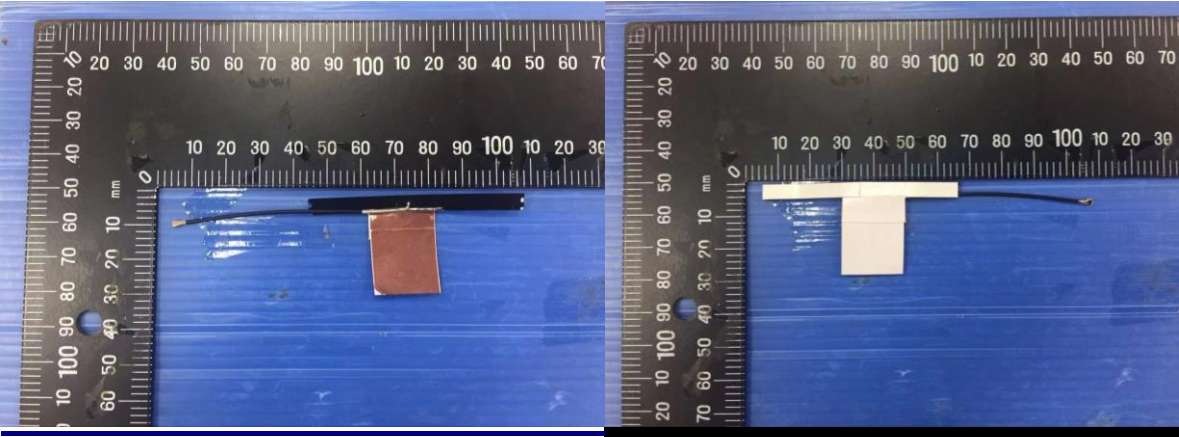


Include a dimensioned photo and dimensioned drawing of Tx2 (or Rx2) antenna here.

Tx2 (or Rx2) Antenna Dimensioned Drawing:



Tx2 (or Rx2) Antenna Photo:



Include front view photo of all 2 antennas here.

Antenna Manufacturer: INPAQ

Antenna Part Number: WA-P-LE-02-035 (DC33002L100)TX1 ;

WA-P-LE-02-036 (DC33002L110) TX2/RX2



Include back view photo of all 2 antennas here.

Antenna Manufacturer: INPAQ

Antenna Part Number: WA-P-LE-02-035 (DC33002L100)TX1 ;

WA-P-LE-02-036 (DC33002L110) TX2/RX2

