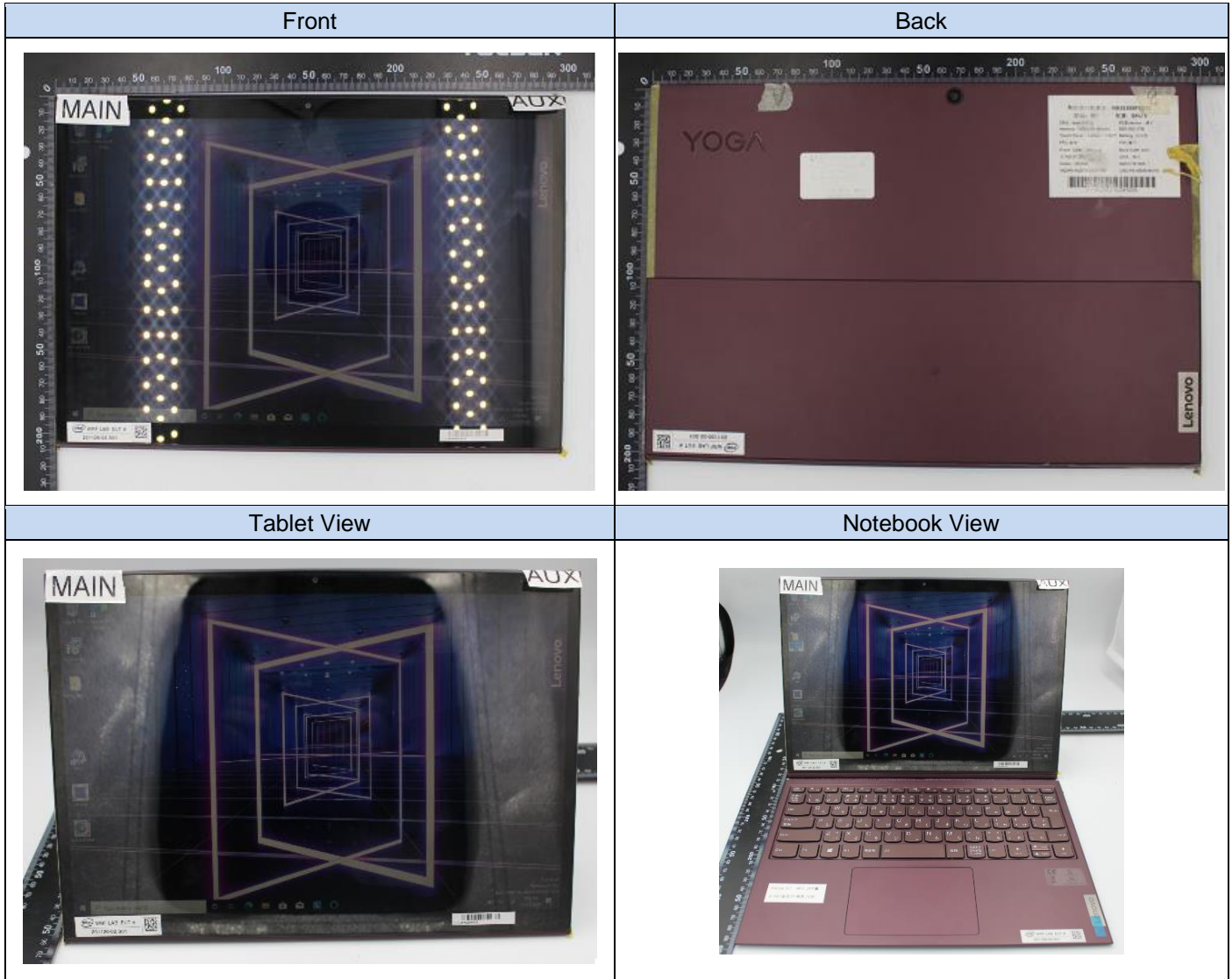
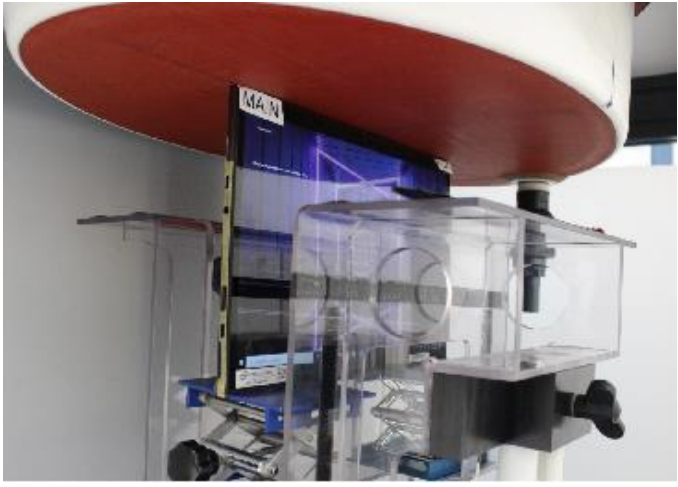


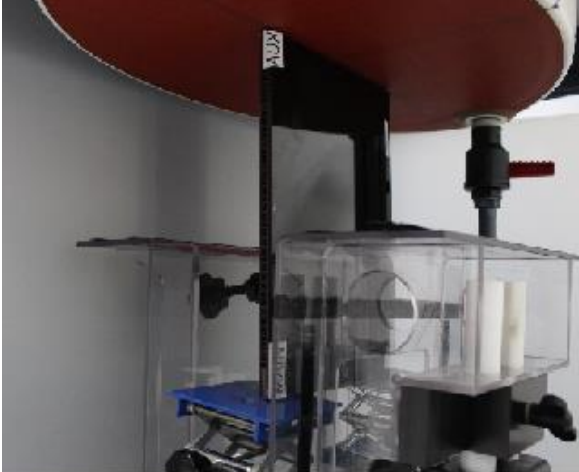


# Annex F. Photographs

## F.1 Test Sample

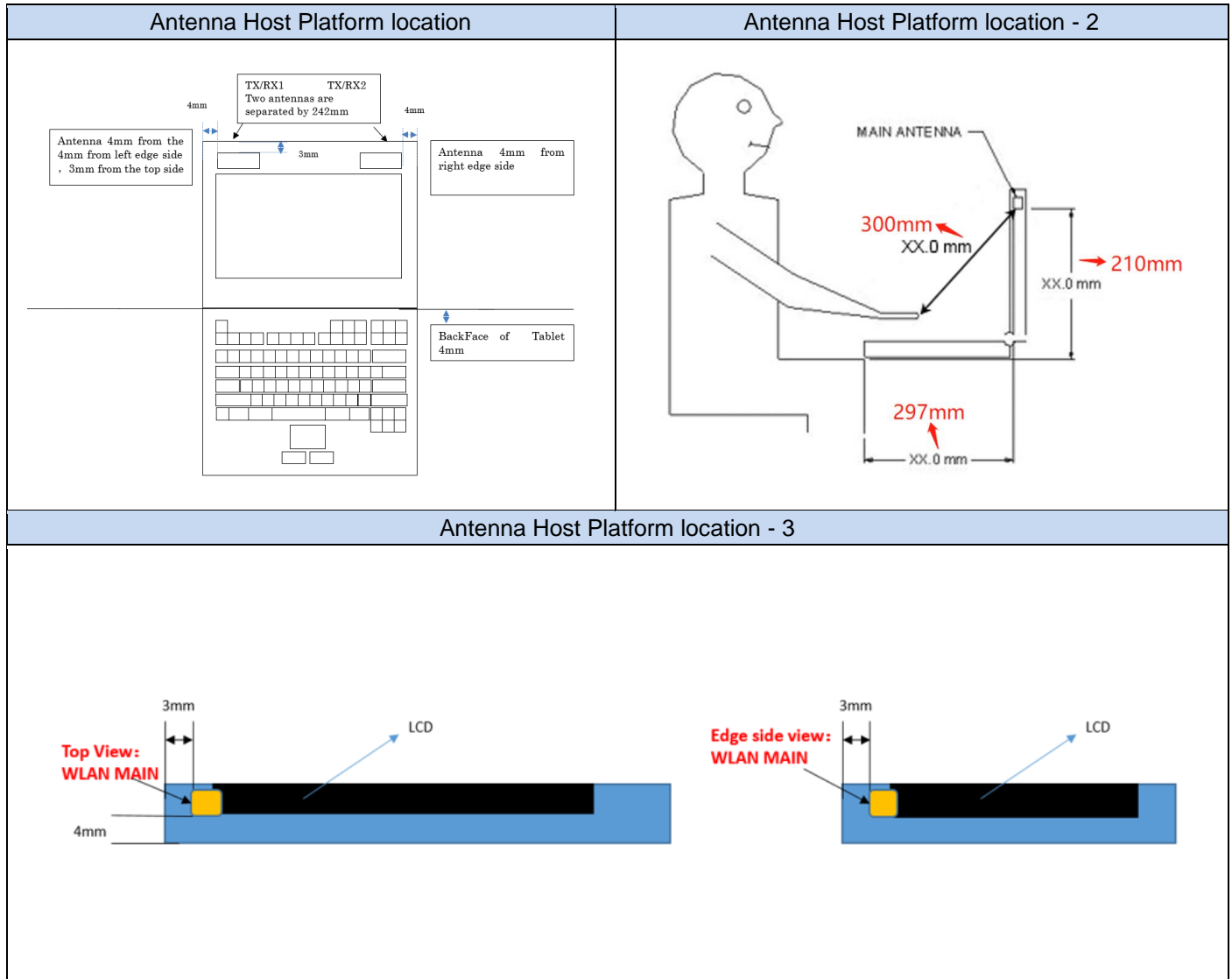


## F.2 Test positions

Top Edge	Back Face
 A photograph showing the top edge of a clear acrylic test chamber. The chamber is mounted on a black metal frame. A red circular light fixture is visible above the chamber. A blue cart is partially visible in the background.	 A photograph showing the back face of the test chamber. The chamber is mounted on a black metal frame. A red circular light fixture is visible above the chamber. A blue cart is partially visible in the background.
Left Edge	Right Edge
 A photograph showing the left edge of the test chamber. The chamber is mounted on a black metal frame. A red circular light fixture is visible above the chamber. A blue cart is partially visible in the background.	 A photograph showing the right edge of the test chamber. The chamber is mounted on a black metal frame. A red circular light fixture is visible above the chamber. A blue cart is partially visible in the background.

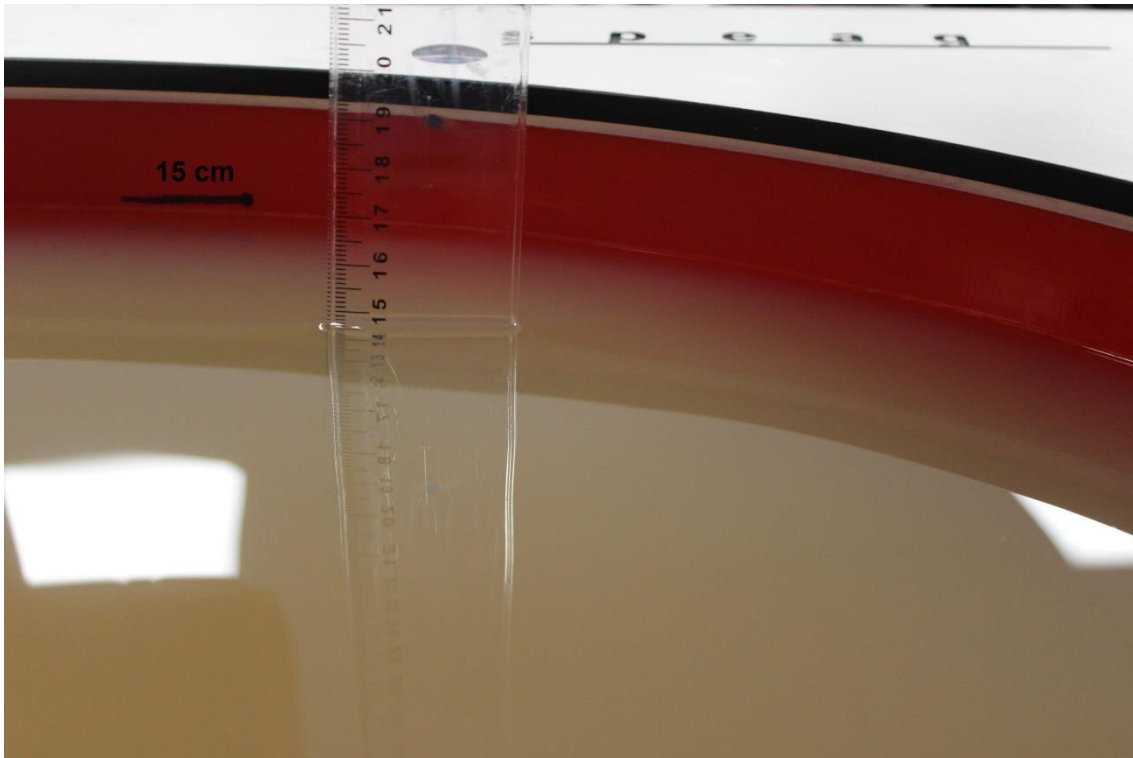
### F.3 Antenna host platform location and adjacent edge positions relative to the body

All information (diagrams, values and dimensions) in this section are provided by the manufacturer



### F.4 Phantom liquid level during measurements

ELI phantom Body liquid SAR Dasy SPEAG MBL600-6000V6 Batch - 160630-01



**End of the report**

**This page is intentionally left blank and marks the last page of the test report.**