
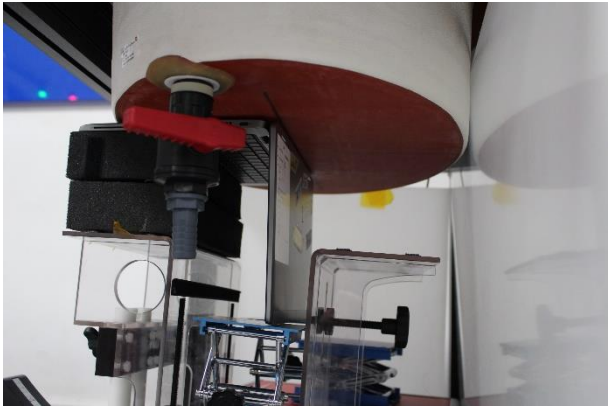




# Annex F. Photographs

## F.1 Test Sample

Front	Back
	
Screen	Keyboard
	
Laptop Mode	
	

F.2 Test positions

Laptop Mode	Laptop Mode – Side View
	
Back Face	Bottom Edge
	

F.3 Antenna host platform location and adjacent edge positions relative to the body

All information (diagrams, values and dimensions) in this section are provided by the manufacturer

Antenna Host Platform location

Top

Left

Right

Bottom

NB mode open 90°  
Panel should be vertical to desk

Antenna Host Platform location - 2

Minimum Separation Distance			
Item	Antenna	Position	Distance (mm)
A	WLAN-Aux	to Top	193
B	WLAN-Aux	to Right	168
C	WLAN-Aux	to Left	104
D	WLAN-Aux	to Bottom	3.65
E	WLAN-Aux	Aux Antenna Length	32
F	Main-Aux	Main to Aux	51
G	WLAN-Main	to Top	193
H	WLAN-Main	to Right	86
I	WLAN-Main	to Left	189
J	WLAN-Main	to Bottom	3.65
K	WLAN-Main	Main Antenna Length	32
L	NB	Bumper thickness	0.79

Antenna Host Platform location - 3

Doc.No :3.8.05 Rev – 8.6

Front

Left

Right

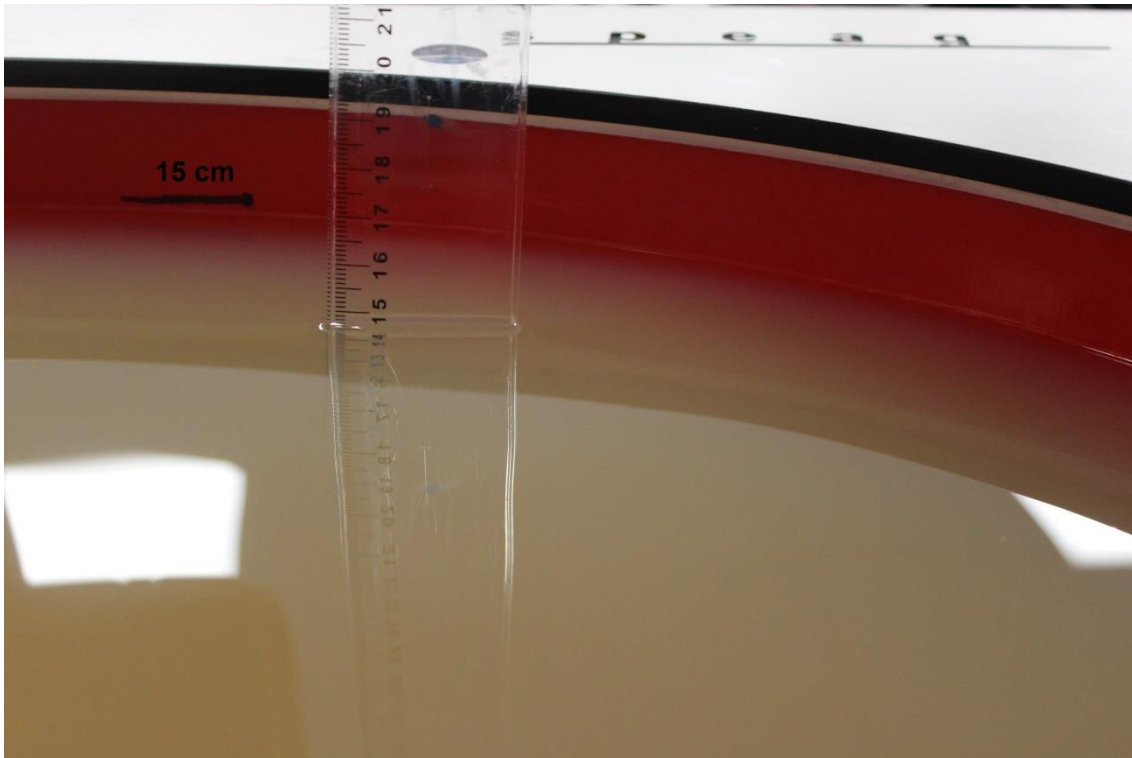
Rear

Antenna Host Platform location - 4

Minimum Separation Distance			
Item	Antenna	Position	Distance (mm)
Q	WLAN-Aux	to Front	11.2
P	WLAN-Aux	to Rear	2.2
R	WLAN-Main	to Front	11.2
S	WLAN-Main	to Rear	2.2

**F.4 Phantom liquid level during measurements**

ELI phantom Body liquid SAR Dasy SPEAG MBBL600-6000V6 Batch - 160603-01



### **End of the report**

**This page is intentionally left blank and marks the last page of the test report.**