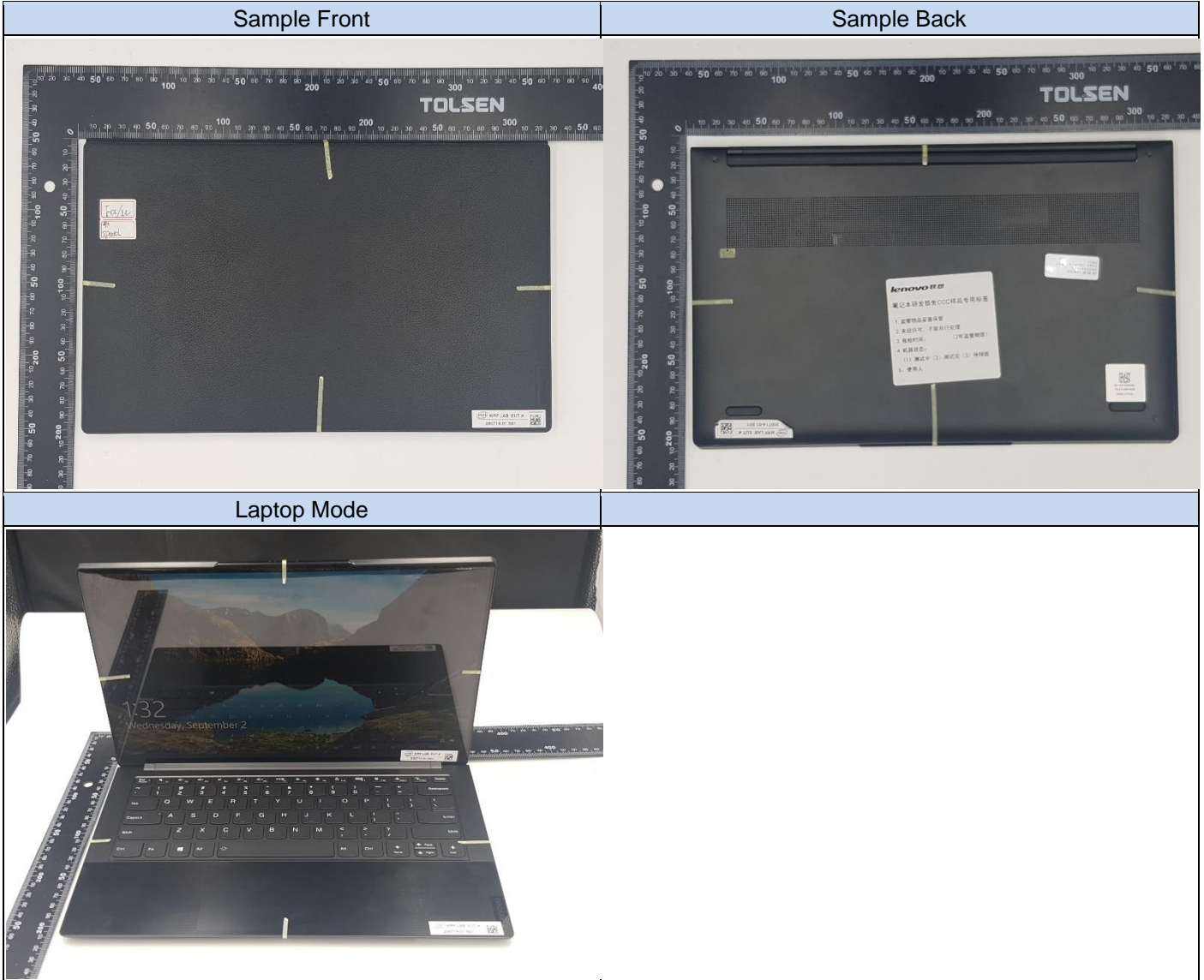
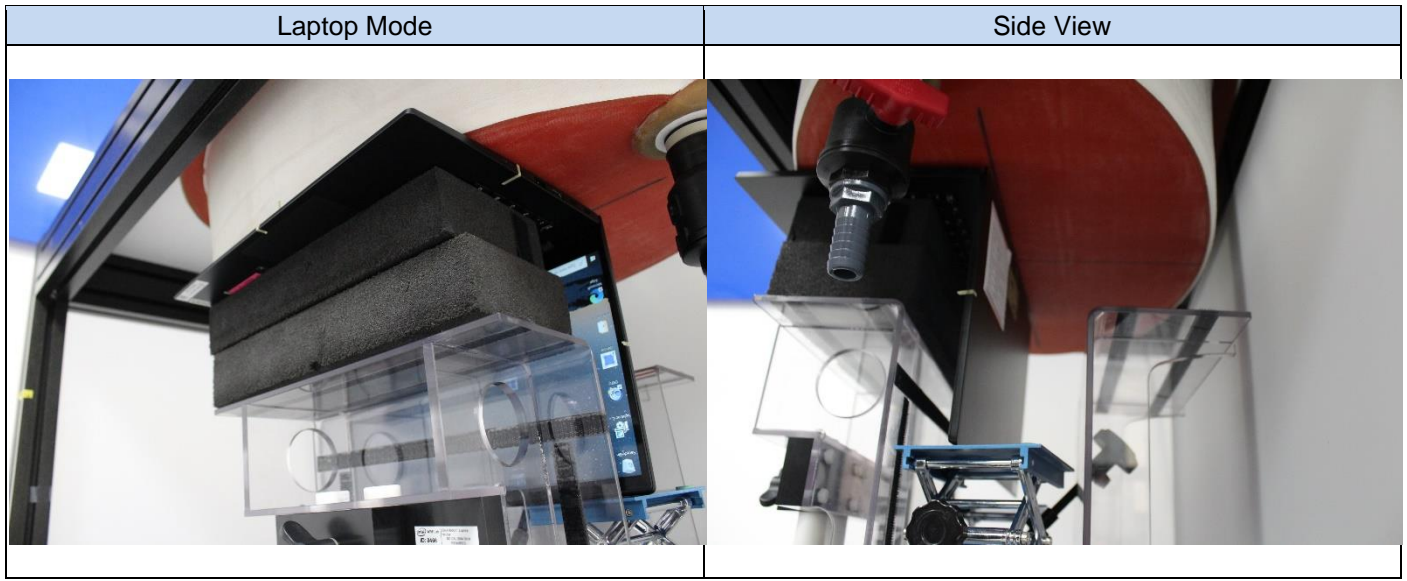


Annex F. Photographs

F.1 Test Sample

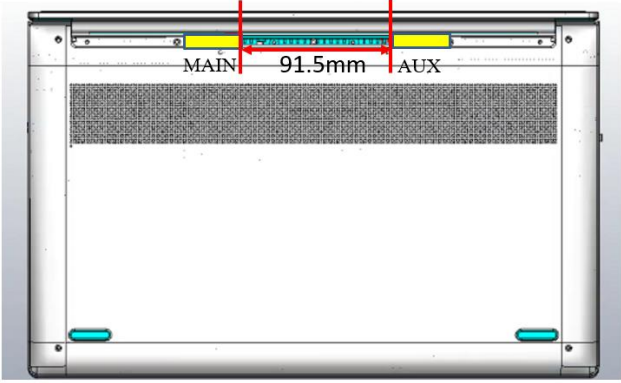
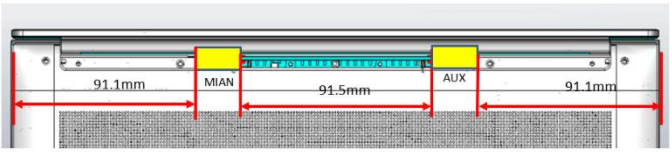
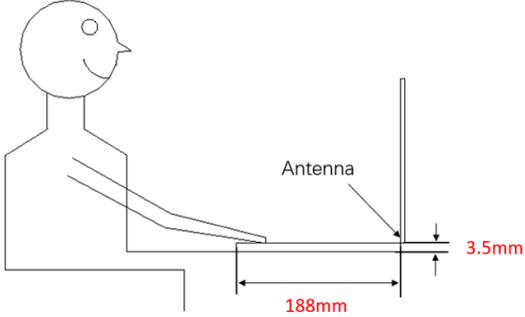


F.2 Test positions



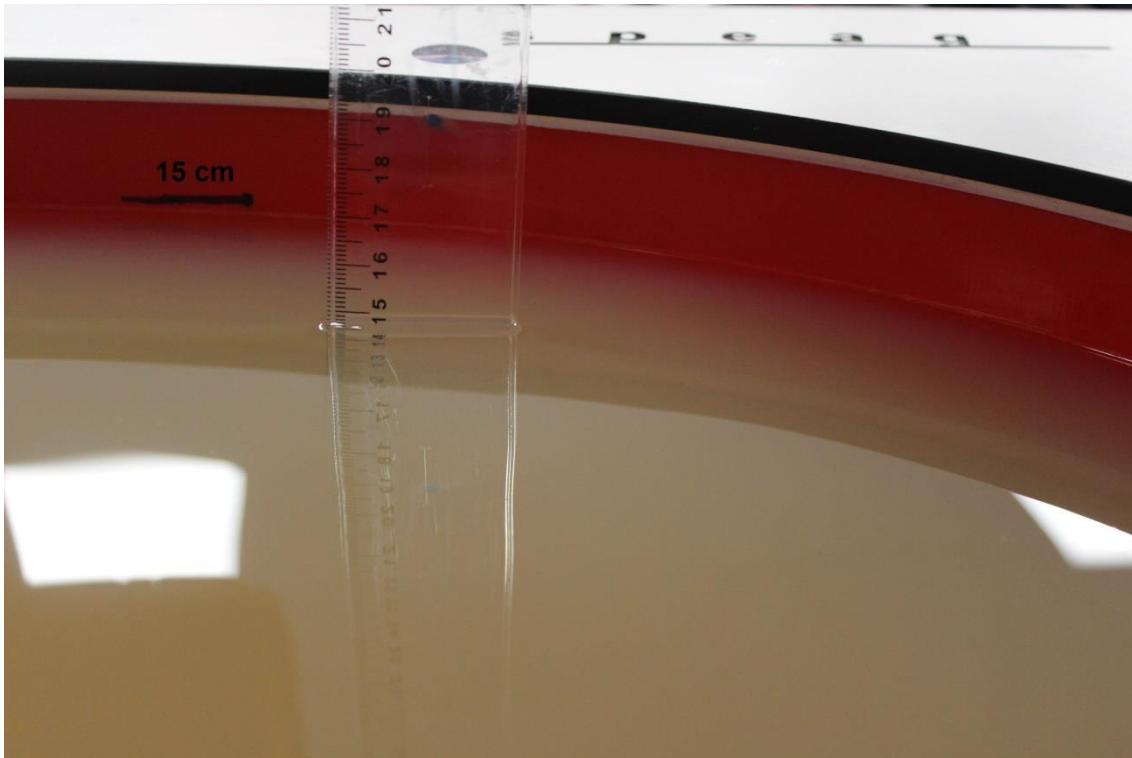
F.3 Antenna host platform location and adjacent edge positions relative to the body

Information provided by the customer

Antenna Host Platform location	Antenna Host Platform location - 2
 <p>Diagram showing the antenna host platform location on the laptop. The main antenna (MAIN) and auxiliary antenna (AUX) are positioned along the top edge. The distance between the center of the main antenna and the center of the auxiliary antenna is 91.5mm.</p>	 <p>Diagram showing the antenna host platform location on the laptop. The main antenna (MIAN) and auxiliary antenna (AUX) are positioned along the top edge. The distance from the left edge to the center of the main antenna is 91.1mm. The distance between the center of the main antenna and the center of the auxiliary antenna is 91.5mm. The distance from the center of the auxiliary antenna to the right edge is 91.1mm.</p>
Laptop Mode	
 <p>Diagram showing a person sitting at a laptop. The antenna is positioned on the laptop. The distance from the center of the person's torso to the center of the antenna is 188mm. The height of the antenna above the laptop surface is 3.5mm.</p>	

F.4 Phantom liquid level during measurements

ELI phantom Body liquid SAR Dasy SPEAG MBBL600-6000V6 Batch – 191014-02



End of the report

This page is intentionally left blank and marks the last page of the test report.