

**Color Side 1:**  
BLACK + PMS 2925

**Color Side 2:**  
BLACK + PMS 2925


**Flat size:**  
12.75 x 5.5 in.

**Finished size:**  
4.25 x 5.5 in.

**Fold 1:**  
3-panel  
C-fold



## More HP resources

Resource	Location
<b>HP support</b> <ul style="list-style-type: none"><li>Online chat with an HP technician (select countries).</li><li>Find telephone numbers.</li><li>Locate HP service center locations.</li></ul>	Go to <a href="http://www.hp.com/support">http://www.hp.com/support</a> .
<b>Product Notices, Warranty, and User Guide</b> <ul style="list-style-type: none"><li>Safety and regulatory information</li><li>The HP Limited Warranty applicable to your tablet</li><li>Product documentation</li></ul>	To access the user guides, tap the <b>Start</b> button  , tap <b>All apps</b> , tap <b>HP Help and Support</b> , and then tap <b>HP Documentation</b> .
<b>Serial number, product number, model number, and IMEI number</b>	On the back of the tablet, or from <b>HP Help and Support</b> .

### Product description

This product is a lightweight tablet and features a thin-panel display, processor, RAM, integrated battery pack, and an external AC adapter. This printed *Quick Start* guide identifies the hardware components of your tablet. The AC adapter has an input rating of 100–240 V ac, 50/60 Hz, and a DC output rating of 0.3–1.0 A. You can access the latest user guide from **HP Help and Support**.

### Specification

The tablet operates on DC power, which can be supplied by an AC or a DC power source. The AC power source must be rated at 100–240 V, 50/60 Hz.

**NOTE:** The HP adapter included with your tablet is recommended for charging the tablet.

**Temperature** Operating: Metric, 0°C to 35°C; U.S., 32°F to 95°F

**Relative humidity (noncondensing)** Operating: 10% to 90%

### Limited Warranty

You can find your HP Limited Warranty located with the user guides using **HP Help and Support**. In some countries or regions, HP may provide a printed warranty in the box. For countries or regions where the warranty is not provided in printed format, you can request a copy from <http://www.hp.com/go/orderdocuments>. For products purchased in Asia Pacific, you can write to HP at Hewlett Packard, POD, P.O. Box 200, Alexandra Post Office, Singapore 911507. Include your product name, and your name, phone number, and postal address.

### Product notices

Some notices may not apply to your product.

One or more integrated wireless devices are installed in this device. In some environments, the use of wireless devices may be restricted. Such restrictions may apply aboard airplanes, in hospitals, near explosives, in hazardous locations, and so on. If you are uncertain of the policy that applies to the use of this product, ask for authorization to use it before you turn it on.

### Regulatory information







For regulatory identification purposes, your product is assigned a Regulatory Model Number (RMN), HSTNH-I508FC. The RMN is located on the back of the tablet, and should not be confused with the marketing name (if any, etc.) or product numbers (HP P/N, etc.).

If required, regulatory markings for your country or region are located on the back of the unit, under the removable battery (if equipped), on the packaging, or elsewhere in this document. For more safety and regulatory information, refer to the *Product Notices* included with your tablet, accessible via **HP Help and Support**.

### Regulatory Model Number and Simplified Declaration of Conformity

The Regulatory Model Number (RMN) for this equipment is HSTNH-I508FC. The RMN is located on the back of the tablet.

Hereby, HP declares that this equipment is in compliance with the essential requirements and other relevant provisions of Directive 1999/5/EC. To view the Declaration of Conformity for this equipment, go to [www.hp.eu/certificates](http://www.hp.eu/certificates) and search using this equipment's RMN.

	<b>WARNING:</b> To reduce the risk of electric shock or damage to the equipment, plug the AC adapter into an AC outlet that is easily accessible at all times.
	<b>WARNING:</b> To reduce potential safety issues, only the AC adapter provided with the product, a replacement AC adapter provided by HP, or an AC adapter purchased as an accessory from HP should be used with the product.
	<b>WARNING:</b> To reduce the possibility of heat-related injuries or of overheating the tablet, do not place the tablet directly on your lap. Do not allow a soft surface, such as pillows or rugs or clothing, to block airflow. Also, do not allow the AC adapter to contact the skin or a soft surface, such as pillows or rugs or clothing, during operation. The tablet and the AC adapter comply with the user-accessible surface temperature limits defined by the International Standard for Safety of Information Technology Equipment (IEC 60950-1).
	<b>WARNING:</b> To reduce the risk of fire or burns, do not disassemble, crush, or puncture; do not short external contacts; do not dispose of in fire or water.
	<b>WARNING:</b>  To prevent possible hearing damage, do not listen at high volume levels for long periods.
	<b>IMPORTANT:</b> The battery(ies) in this product cannot be easily replaced by users themselves. Removing or replacing the battery could affect your warranty coverage. If a battery is no longer holding a charge, contact support. When a battery has reached the end of its useful life, do not dispose of the battery in general household waste. Follow the local laws and regulations in your area for battery disposal.



822094-001

Printed in China    Impreso en China    中国印刷  
Imprimé en Chine    Impresso na    중국에서 인쇄  
Stampato in Cina    China

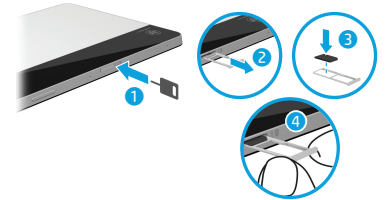
## Quick Start

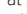
### Setting up your tablet



- 1 If you purchased a micro SIM card for your Internet data plan, install the micro SIM card in the micro SIM card slot.\*

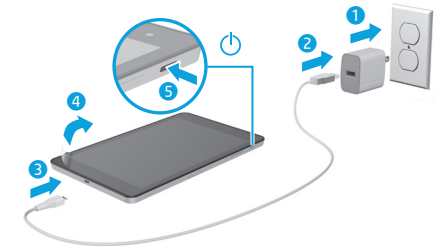
\*Select products only



- 2 After charging the battery, press the power button  for at least 2 seconds to turn on the tablet.

- 3 Follow the on-screen instructions to select a language, a wireless network, and a Microsoft® account.

**NOTE:** If you do not have a Microsoft account, you can create one now.



### Turning off the tablet

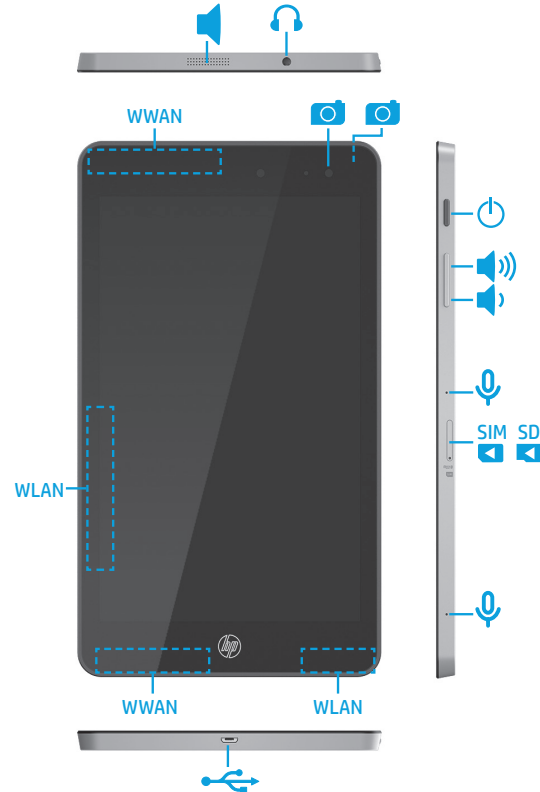
Tap the **Start** button , tap the **Power** icon , and then tap **Shut down**.

**NOTE:** If your tablet becomes unresponsive, press and hold the power button  until the tablet turns off.



## Getting to know your tablet

Features may vary by product and country.



## Navigating the Windows Start screen

The Windows® Start screen provides a central location where you can access your information and email, browse the Web, stream videos, view photos, and access your social media websites.



**NOTE:** The appearance of the Windows screen may vary.



### Display the Start menu

Tap the **Start** button in the lower-left corner of the taskbar.



### Search

In the taskbar search box, begin typing the name of an app, setting, file, or Internet topic.



### List your apps

Tap the **Start** button, and then tap **All apps**.



### Shut down your computer

Tap the **Start** button, tap the **Power** icon, and then tap **Shut down**.



### Switch between open apps

Tap the **Task view** icon in the taskbar.

### Find more information

To learn about Windows and to access help topics, tap the **Start** button, and then tap the **Get started** app.

To access the user guides, tap the **Start** button, tap **All apps**, tap **HP Help and Support**, and then tap **HP Documentation**.

### Back up your data

HP strongly encourages you to periodically back up your personal data and media on your tablet to another computer, a dedicated storage device, or to the cloud using one of several commercially available solutions. For more information, you can access the user guide from **HP Help and Support**.

### Use the pen\*

You can use the pen directly on the tablet. For details about using the pen, refer to the instructions included with the pen.

\*Select products only



### Change your tablet's view

The Auto-rotate feature allows you to change your tablet's view. For landscape view, hold the tablet horizontally. For portrait view, hold the tablet vertically.

**NOTE:** Some apps do not rotate automatically.

### Use the keyboard\*

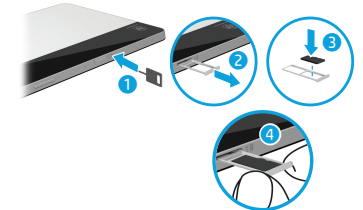
You can use the detachable Bluetooth® keyboard for easy navigation, after the keyboard folio is paired with the tablet.

To pair the keyboard to the tablet, type **Bluetooth** in the taskbar search box, select **Bluetooth settings**, select the keyboard, and then follow the on-screen instructions to pair the keyboard. For details about using the keyboard, refer to the instructions included with the keyboard.

\*Select products only

### Use a microSD card

Insert a microSD card (purchased separately) in the microSD slot.



**NOTE:** Your tablet has read/write support for SDXC microSD cards up to 64 GB.