



**FCC OET BULLETIN 65 SUPPLEMENT C
IC RSS-102 ISSUE 3**

SAR EVALUATION REPORT

For

**Intel 1000 Series WiFi card
(Tested inside of Lenovo S10-3T Tablet)**

**FCC ID: PD9112BNHU
IC: 1000M-112BNHU**

**FCC MODEL: 112BNHMH
IC MODEL: 112BNHU**

REPORT NUMBER: 09U12893-2

ISSUE DATE: November 16, 2009

Prepared for

**INTEL CORPORATION
2111 N.E. 25TH AVENUE
HILLSBORO, OR 97124, USA**

Prepared by

**COMPLIANCE CERTIFICATION SERVICES
47173 BENICIA STREET
FREMONT, CA 94538, U.S.A.
TEL: (510) 771-1000
FAX: (510) 661-0888**



NVLAP LAB CODE 200065-0

Revision History

Rev.	Issue Date	Revisions	Revised By
--	November 16, 2009	Initial Issue	--

TABLE OF CONTENTS

1. ATTESTATION OF TEST RESULTS	4
2. TEST METHODOLOGY	5
3. FACILITIES AND ACCREDITATION	5
4. CALIBRATION AND UNCERTAINTY	6
4.1. MEASURING INSTRUMENT CALIBRATION	6
4.2. MEASUREMENT UNCERTAINTY	7
5. EQUIPMENT UNDER TEST	9
6. SYSTEM SPECIFICATIONS	10
7. COMPOSITION OF INGREDIENTS FOR TISSUE SIMULATING LIQUIDS	11
8. LIQUID PARAMETERS CHECK	12
8.1. LIQUID CHECK RESULTS FOR 2450 MHZ	13
9. SYSTEM CHECK	14
9.1. SYSTEM CHECK RESULTS FOR D2450V2	15
10. OUTPUT POWER VERIFICATION	16
11. SUMMARY OF TEST RESULTS	17
11.1. SAR TEST RESULT FOR THE 2.4 GHZ BAND	17
12. ENHANCED ENERGY COUPLING (KDB 447498)	18
13. WORST-CASE SAR TEST PLOTS	19
14. ATTACHMENTS	20
15. TEST SETUP PHOTO	21
16. HOST DEVICE PHOTO	25

1. ATTESTATION OF TEST RESULTS

COMPANY NAME: INTEL CORPORATION
2111 N.E. 25TH AVENUE
HILLSBORO, OR 97124, USA

EUT DESCRIPTION: Intel 1000 Series WiFi card (Tested inside of Lenovo S10-3T Tablet)

FCC ID: PD9112BNHU

MODEL: 112BNHMH

IC: 1000M-112BNHU

MODEL: 112BNHU

DEVICE CATEGORY: Portable

EXPOSURE CATEGORY: General Population/Uncontrolled Exposure

DATE TESTED: November 13 , 2009

THE HIGHEST SAR VALUES:

FCC / IC Rule Parts	Frequency Range [MHz]	The Highest SAR Values (1g_mW/g)	Limit (mW/g)
15.247 / RSS-102	2400 – 2483.5	0.191 (Secondary Portrait)	1.6

APPLICABLE STANDARDS AND TEST PROCEDURES:

STANDARD	TEST RESULTS
FCC OET BULLETIN 65 SUPPLEMENT C and the following specific Test Procedure: <ul style="list-style-type: none"> ○ KDB 248227 SAR measurement procedures for 802.11a/b/g transmitters ○ KDB 447498 RF Exposure Requirements and Procedures for mobile and portable devices 	Pass
RSS-102 ISSUE 3	Pass

Compliance Certification Services, Inc. (CCS) tested the above equipment in accordance with the requirements set forth in the above standards. All indications of Pass/Fail in this report are opinions expressed by CCS based on interpretations and/or observations of test results. Measurement Uncertainties were not taken into account and are published for informational purposes only. The test results show that the equipment tested is capable of demonstrating compliance with the requirements as documented in this report.

Note: The results documented in this report apply only to the tested sample, under the conditions and modes of operation as described herein. This document may not be altered or revised in any way unless done so by CCS and all revisions are duly noted in the revisions section. Any alteration of this document not carried out by CCS will constitute fraud and shall nullify the document. This report must not be used by the client to claim product certification, approval, or endorsement by NVLAP, NIST, any agency of the Federal Government, or any agency of any government.

Approved & Released For CCS By:

Sunny Shih

SUNNY SHIH
ENGINEERING SUPERVISOR
COMPLIANCE CERTIFICATION SERVICES

2. TEST METHODOLOGY

The tests documented in this report were performed in accordance with FCC OET Bulletin 65 Supplement C, Specific FCC Procedure KDB 248227 SAR Measurement Procedure for 802.11abg Transmitters, 447498_RF Exposure Requirements and Procedures for mobile and portable devices and IC RSS 102 Issue 3.

3. FACILITIES AND ACCREDITATION

The test sites and measurement facilities used to collect data are located at 47173 Benicia Street, Fremont, California, USA.

CCS is accredited by NVLAP, Laboratory Code 200065-0. The full scope of accreditation can be viewed at <http://www.ccsemc.com>

4. CALIBRATION AND UNCERTAINTY

4.1. MEASURING INSTRUMENT CALIBRATION

The measuring equipment utilized to perform the tests documented in this report has been calibrated in accordance with the manufacturer's recommendations, and is traceable to recognized national standards.

Name of Equipment	Manufacturer	Type/Model	Serial No.	Cal. Due date		
				MM	DD	Year
Robot - Six Axes	Stäubli	RX90BL	N/A			N/A
Robot Remote Control	Stäubli	CS7MB	3403-91535			N/A
DASY4 Measurement Server	SPEAG	SEUMS001BA	1041			N/A
Probe Alignment Unit	SPEAG	LB (V2)	261			N/A
SAM Phantom (SAM1)	SPEAG	QD000P40CA	1185			N/A
SAM Phantom (SAM2)	SPEAG	QD000P40CA	1050			N/A
Oval Flat Phantom (ELI 4.0)	SPEAG	QD OVA001 B	1003			N/A
Electronic Probe kit	HP	85070C	N/A			N/A
S-Parameter Network Analyzer	Agilent	8753ES-6	MY40001647	11	22	2010
Signal Generator	Agilent	8753ES-6	MY40001647	11	22	2010
E-Field Probe	SPEAG	EX3DV4	3686	3	23	1010
Data Acquisition Electronics	SPEAG	DAE3 V1	500	9	15	2010
System Validation Dipole	SPEAG	D900V2	108	1	21	2010
System Validation Dipole	SPEAG	D1800V2	294	1	29	2010
System Validation Dipole	SPEAG	D1900V2	5d043	1	29	2010
System Validation Dipole	SPEAG	D2450V2	748	4	14	2010
System Validation Dipole	SPEAG	D5GHzV2	1003	11	21	2009
ESG Vector Signal Generator	Agilent	E4438C	US44271090	9	17	2010
Power Meter	Giga-tronics	8651A	8651404	1	11	2010
Power Sensor	Giga-tronics	80701A	1834588	1	11	2010
Amplifier	Mini-Circuits	ZVE-8G	90606			N/A
Amplifier	Mini-Circuits	ZHL-42W	D072701-5			N/A
Simulating Liquid	SPAEG	H2450	N/A	Within 24 hrs of first test		
Simulating Liquid	SPAEG	M2450	N/A	Within 24 hrs of first test		
Simulating Liquid	SPAEG	M5800	N/A	Within 24 hrs of first test		

4.2. MEASUREMENT UNCERTAINTY

Measurement uncertainty for 300 MHz – 3000 MHz

Uncertainty component	Tol. (±%)	Probe Dist.	Div.	Ci (1g)	Ci (10g)	Std. Unc.(±%)	
						Ui (1g)	Ui(10g)
Measurement System							
Probe Calibration	4.80	N	1	1	1	4.80	4.80
Axial Isotropy	4.70	R	1.732	0.707	0.707	1.92	1.92
Hemispherical Isotropy	9.60	R	1.732	0.707	0.707	3.92	3.92
Boundary Effects	1.00	R	1.732	1	1	0.58	0.58
Linearity	4.70	R	1.732	1	1	2.71	2.71
System Detection Limits	1.00	R	1.732	1	1	0.58	0.58
Readout Electronics	1.00	N	1	1	1	1.00	1.00
Response Time	0.80	R	1.732	1	1	0.46	0.46
Integration Time	2.60	R	1.732	1	1	1.50	1.50
RF Ambient Conditions - Noise	1.59	R	1.732	1	1	0.92	0.92
RF Ambient Conditions - Reflections	0.00	R	1.732	1	1	0.00	0.00
Probe Positioner Mechanical Tolerance	0.40	R	1.732	1	1	0.23	0.23
Probe Positioning With Respect to Phantom Shell	2.90	R	1.732	1	1	1.67	1.67
algorithms for max. SAR evaluation	3.90	R	1.732	1	1	2.25	2.25
Test sample Related							
Test Sample Positioning	1.10	N	1	1	1	1.10	1.10
Device Holder Uncertainty	3.60	N	1	1	1	3.60	3.60
Power and SAR Drift Measurement	5.00	R	1.732	1	1	2.89	2.89
Phantom and Tissue Parameters							
Phantom Uncertainty	4.00	R	1.732	1	1	2.31	2.31
Liquid Conductivity - Target	5.00	R	1.732	0.64	0.43	1.85	1.24
Liquid Conductivity - Meas.	8.60	N	1	0.64	0.43	5.50	3.70
Liquid Permittivity - Target	5.00	R	1.732	0.6	0.49	1.73	1.41
Liquid Permittivity - Meas.	3.30	N	1	0.6	0.49	1.98	1.62
Combined Standard Uncertainty	RSS					11.44	10.49
Expanded Uncertainty (95% Confidence Interval)	K=2					22.87	20.98
Notesfor table							
1. Tol. - tolerance in influence quaitity							
2. N - Nomal							
3. R - Rectangular							
4. Div. - Divisor used to obtain standard uncertainty							
5. Ci - is te sensitivity coefficient							

Measurement uncertainty for 3 GHz – 6 GHz

Uncertainty component	Tol. (±%)	Probe Dist.	Div.	Ci (1g)	Ci (10g)	Std. Unc.(±%)	
						Ui (1g)	Ui(10g)
Measurement System							
Probe Calibration	4.80	N	1	1	1	4.80	4.80
Axial Isotropy	4.70	R	1.732	0.707	0.707	1.92	1.92
Hemispherical Isotropy	9.60	R	1.732	0.707	0.707	3.92	3.92
Boundary Effects	1.00	R	1.732	1	1	0.58	0.58
Linearity	4.70	R	1.732	1	1	2.71	2.71
System Detection Limits	1.00	R	1.732	1	1	0.58	0.58
Readout Electronics	1.00	N	1	1	1	1.00	1.00
Response Time	0.80	R	1.732	1	1	0.46	0.46
Integration Time	2.60	R	1.732	1	1	1.50	1.50
RF Ambient Conditions - Noise	3.00	R	1.732	1	1	1.73	1.73
RF Ambient Conditions - Reflections	3.00	R	1.732	1	1	1.73	1.73
Probe Positioner Mechanical Tolerance	0.40	R	1.732	1	1	0.23	0.23
Probe Positioning With Respect to Phantom Shell	2.90	R	1.732	1	1	1.67	1.67
Extrapolation, interpolation, and integration algorithms for max. SAR evaluation	3.90	R	1.732	1	1	2.25	2.25
Test sample Related							
Test Sample Positioning	1.10	N	1	1	1	1.10	1.10
Device Holder Uncertainty	3.60	N	1	1	1	3.60	3.60
Power and SAR Drift Measurement	5.00	R	1.732	1	1	2.89	2.89
Phantom and Tissue Parameters							
Phantom Uncertainty	4.00	R	1.732	1	1	2.31	2.31
Liquid Conductivity - Target	5.00	R	1.732	0.64	0.43	1.85	1.24
Liquid Conductivity - Meas.	8.60	N	1	0.64	0.43	5.50	3.70
Liquid Permittivity - Target	5.00	R	1.732	0.6	0.49	1.73	1.41
Liquid Permittivity - Meas.	3.30	N	1	0.6	0.49	1.98	1.62
Combined Standard Uncertainty	RSS					11.66	10.73
Expanded Uncertainty (95% Confidence Interval)	K=2					23.32	21.46
Notesfor table							
1. Tol. - tolerance in influence quaitity							
2. N - Nomal							
3. R - Rectangular							
4. Div. - Divisor used to obtain standard uncertainty							
5. Ci - is te sensitivity coefficient							

5. EQUIPMENT UNDER TEST

Intel 1000 Series WiFi card

(Tested inside of Lenovo S10-3T Tablet)

LCD Sizes: 10.1"

Normal operation:

- Laptop - Lap-held,
- Tablet - Edge (underarm) & lap-held

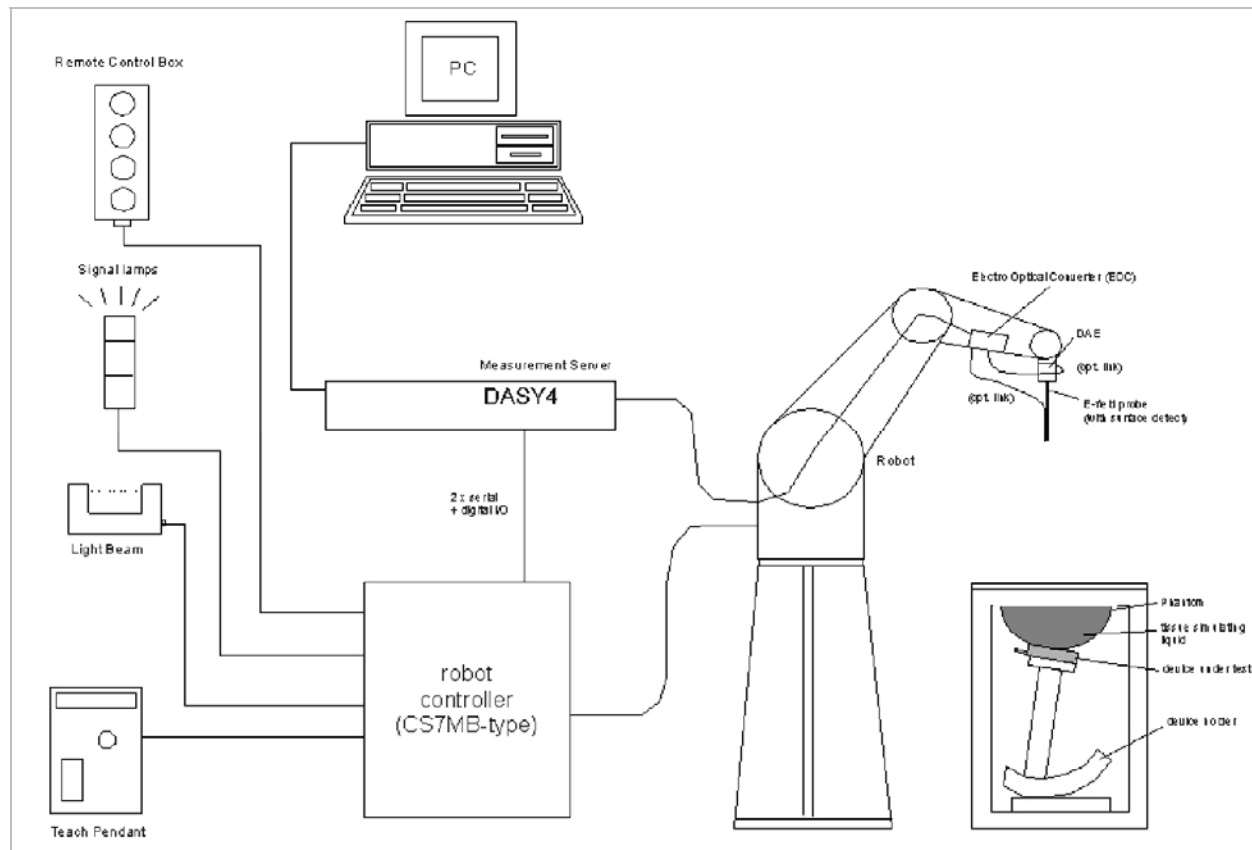
Antenna tested:

<u>Manufactured</u>	<u>Model Number</u>	<u>Peak gain (dBi)</u>
Quanta	QADCFL2_WL_M (Main)	-0.1.4

Note: Aux antenna is for receiving only.

Power supply: Power supplied through laptop computer (host device)

6. SYSTEM SPECIFICATIONS



The DASY4 system for performing compliance tests consists of the following items:

- A standard high precision 6-axis robot (Stäubli RX family) with controller, teach pendant and software. An arm extension for accommodating the data acquisition electronics (DAE).
- A dosimetric probe, i.e., an isotropic E-field probe optimized and calibrated for usage in tissue simulating liquid. The probe is equipped with an optical surface detector system.
- A data acquisition electronics (DAE) which performs the signal amplification, signal multiplexing, AD-conversion, offset measurements, mechanical surface detection, collision detection, etc. The unit is battery powered with standard or rechargeable batteries. The signal is optically transmitted to the EOC.
- The function of the measurement server is to perform the time critical tasks such as signal filtering, control of the robot operation and fast movement interrupts.
- A probe alignment unit which improves the (absolute) accuracy of the probe positioning.
- A computer operating Windows 2000 or Windows XP.
- DASY4 software.
- Remote controls with teach pendant and additional circuitry for robot safety such as warning lamps, etc.
- The SAM twin phantom enabling testing left-hand and right-hand usage.
- The device holder for handheld mobile phones.
- Tissue simulating liquid mixed according to the given recipes.
- Validation dipole kits allowing to validate the proper functioning of the system.

7. COMPOSITION OF INGREDIENTS FOR TISSUE SIMULATING LIQUIDS

The following tissue formulations are provided for reference only as some of the parameters have not been thoroughly verified. The composition of ingredients may be modified accordingly to achieve the desired target tissue parameters required for routine SAR evaluation.

Ingredients (% by weight)	Frequency (MHz)									
	450		835		915		1900		2450	
Tissue Type	Head	Body	Head	Body	Head	Body	Head	Body	Head	Body
Water	38.56	51.16	41.45	52.4	41.05	56.0	54.9	40.4	62.7	73.2
Salt (NaCl)	3.95	1.49	1.45	1.4	1.35	0.76	0.18	0.5	0.5	0.04
Sugar	56.32	46.78	56.0	45.0	56.5	41.76	0.0	58.0	0.0	0.0
HEC	0.98	0.52	1.0	1.0	1.0	1.21	0.0	1.0	0.0	0.0
Bactericide	0.19	0.05	0.1	0.1	0.1	0.27	0.0	0.1	0.0	0.0
Triton X-100	0.0	0.0	0.0	0.0	0.0	0.0	0.0	0.0	36.8	0.0
DGBE	0.0	0.0	0.0	0.0	0.0	0.0	44.92	0.0	0.0	26.7
Dielectric Constant	43.42	58.0	42.54	56.1	42.0	56.8	39.9	54.0	39.8	52.5
Conductivity (S/m)	0.85	0.83	0.91	0.95	1.0	1.07	1.42	1.45	1.88	1.78

Salt: 99+% Pure Sodium Chloride

Sugar: 98+% Pure Sucrose

Water: De-ionized, 16 MΩ+ resistivity

HEC: Hydroxyethyl Cellulose

DGBE: 99+% Di(ethylene glycol) butyl ether, [2-(2-butoxyethoxy)ethanol]

Triton X-100 (ultra pure): Polyethylene glycol mono [4-(1,1, 3, 3-tetramethylbutyl)phenyl]ether

8. LIQUID PARAMETERS CHECK

The simulating liquids should be checked at the beginning of a series of SAR measurements to determine if the dielectric parameters are within the tolerances of the specified target values. The relative permittivity and conductivity of the tissue material should be within $\pm 5\%$ of the values given in the table below.

Reference Values of Tissue Dielectric Parameters for Head and Body Phantom (for 150 – 3000 MHz and 5800 MHz)

The head tissue dielectric parameters recommended by the IEEE SCC-34/SC-2 in IEEE Standard 1528 have been incorporated in the following table. These head parameters are derived from planar layer models simulating the highest expected SAR for the dielectric properties and tissue thickness variations in a human head. Other head and body tissue parameters that have not been specified in P1528 are derived from the tissue dielectric parameters computed from the 4-Cole-Cole equations and extrapolated according to the head parameters specified in IEEE Standard 1528.

Target Frequency (MHz)	Head		Body	
	ϵ_r	σ (S/m)	ϵ_r	σ (S/m)
150	52.3	0.76	61.9	0.8
300	45.3	0.87	58.2	0.92
450	43.5	0.87	56.7	0.94
835	41.5	0.9	55.2	0.97
900	41.5	0.97	55	1.05
915	41.5	0.98	55	1.06
1450	40.5	1.2	54	1.3
1610	40.3	1.29	53.8	1.4
1800 – 2000	40	1.4	53.3	1.52
2450	39.2	1.8	52.7	1.95
3000	38.5	2.4	52	2.73
5800	35.3	5.27	48.2	6

(ϵ_r = relative permittivity, σ = conductivity and ρ = 1000 kg/m³)

8.1. LIQUID CHECK RESULTS FOR 2450 MHZ

Simulating Liquid Dielectric Parameters for Muscle 2450 MHz

Room Ambient Temperature = 24°C; Relative humidity = 40%

Measured by: Sunny Shih

f (MHz)	Liquid Parameters			Measured	Target	Delta (%)	Limit (%)
2450	e'	53.03	Relative Permittivity (ϵ_r):	53.032	52.7	0.63	± 5
	e''	14.21	Conductivity (σ):	1.937	1.95	-0.69	± 5

Liquid Temperature: 23 deg. C

November 13, 2009 8:13 AM

Frequency	e'	e''
2400000000	53.12801	13.96142
2405000000	53.11591	14.03482
2410000000	53.10131	14.10002
2415000000	53.09771	14.14352
2420000000	53.08381	14.16972
2425000000	53.07921	14.18792
2430000000	53.08491	14.18122
2435000000	53.06911	14.18732
2440000000	53.06471	14.20182
2445000000	53.03571	14.22952
2450000000	53.03181	14.20862
2455000000	52.96281	14.18522
2460000000	52.92671	14.15712
2465000000	52.86291	14.11992
2470000000	52.84751	14.07232
2475000000	52.83241	14.04812
2480000000	52.84021	14.05522
2485000000	52.83341	14.07432
2490000000	52.83581	14.13162
2495000000	52.83771	14.20542
2500000000	52.83281	14.30832

The conductivity (σ) can be given as:

$$\sigma = \omega \epsilon_0 e'' = 2 \pi f \epsilon_0 e''$$

where $f = \text{target } f * 10^6$

$$\epsilon_0 = 8.854 * 10^{-12}$$

9. SYSTEM CHECK

The system performance check is performed prior to any usage of the system in order to guarantee reproducible results. The system performance check verifies that the system operates within its specifications of $\pm 10\%$.

System Performance Check Measurement Conditions

- The measurements were performed in the flat section of the SAM twin phantom filled with Head or Body simulating liquid of the following parameters.
- The DASY4 system with an Isotropic E-Field Probe EX3DV4 was used for the measurements.
- The dipole was mounted on the small tripod so that the dipole feed point was positioned below the center marking of the flat phantom section and the dipole was oriented parallel to the body axis (the long side of the phantom). The standard measuring distance was 10 mm (above 1 GHz) and 15 mm (below 1 GHz) from dipole center to the simulating liquid surface.
- The coarse grid with a grid spacing of 15 mm was aligned with the dipole.
For 5 GHz band - The coarse grid with a grid spacing of 10 mm was aligned with the dipole.
- Special 7x7x7 fine cube was chosen for cube
- Distance between probe sensors and phantom surface was set to 3 mm.
For 5 GHz band - Distance between probe sensors and phantom surface was set to 2.5 mm
- The dipole input power (forward power) was 250 mW $\pm 3\%$.
- The results are normalized to 1 W input power.

IEEE Standard 1528-2003 Numerical reference SAR values (W/kg) for reference dipole and flat phantom

Frequency (MHz)	Distance (mm)	1g SAR [W/kg]	10g SAR [W/kg]	Local SAR at surface (above feed-point)
300	15	3	2	4.4
450	15	4.9	3.3	7.2
835	15	9.5	6.2	4.1
900	15	10.8	6.9	16.4
1450	10	29	16	5.02
1800	10	38.1	19.8	69.5
1900	10	39.7	20.5	72.1
2000	10	41.1	21.1	74.6
2450	10	52.4	24	104.2
3000	10	63.8	25.7	104.2

Reference SAR Values for HEAD & BODY-tissue from calibration certificate of SPEAG. Certificate no: D2450V2-748_April 14, 2008

f (MHz)	Head Tissue		Body Tissue	
	SAR _{1g}	SAR _{10g}	SAR _{1g}	SAR _{10g}
2450			49.5	23.3

9.1. SYSTEM CHECK RESULTS FOR D2450V2

System Validation Dipole: D2450V2 SN: 748

Date: November 13, 2009

Ambient Temperature = 24°C; Relative humidity = 38%

Measured by: Sunny Shih

Medium	CW Signal (MHz)	Forward power (mW)	Measured (Normalized to 1 W)		Target	Delta (%)	Tolerance (%)
Body	2450	250	1g SAR:	52.5	49.5	6.06	±10
			10g SAR:	24.3	23.3	4.29	

10. OUTPUT POWER VERIFICATION

The following procedures had been used to prepare the EUT for the SAR test.

The client provided a special driver and program, CRTU v5.15.36.0, which enable a user to control the frequency and output power of the module.

The modes with highest output power channel were chosen for the conducted output power measurement.

Results

Mode	Channel	f (MHz)	Average Output Power (dBm)	Duty Cycle (%)	Gain Power Setting
802.11b	1	2412	16.8	100	19.0
	6	2437	16.8	100	19.5
	11	2462	16.7	100	20.0
802.11n 20 MHz	6	2437	16.6	99	24.5

11. SUMMARY OF TEST RESULTS

Since bluetooth output power is less than $60/f_{\text{(GHz)}}$, bluetooth individual SAR is not required. Distances between Bluetooth antenna to WiFi main antenna is both more than 5 cm, and thus no SAR evaluation for simultaneous transmission.

11.1. SAR TEST RESULT FOR THE 2.4 GHZ BAND

1) Laptop Mode: Lap-held with the display open at 90° to the keyboard

Mode	Channel	f (MHz)	Antenna	Results (mW/g)	
				1g-SAR	10g-SAR
802.11b	6	2437	Main	0.018	0.009

2) Tablet Mode 1: Edge - Primary Landscape

Mode	Channel	f (MHz)	Antenna	Results (mW/g)	
				1g-SAR	10g-SAR
802.11b	6	2437	Main	0.037	0.020

3) Tablet Mode 2: Secondary Landscape

Mode	Channel	f (MHz)	Antenna	Results (mW/g)	
				1g-SAR	10g-SAR
802.11b	6	2437	Main	0.0072	0.0038

4) Tablet Mode 3: Primary Portrait

WLAN main antenna is more than 20 cm from phantom for primary portrait, so SAR test is not required.

5) Tablet Mode 4: Edge – Secondary Portrait

Mode	Channel	f (MHz)	Antenna	Results (mW/g)	
				1g-SAR	10g-SAR
802.11b	6	2437	Main	0.191	0.104
802.11n 20 MHz	6	2437	Main	0.166	0.086

6) Tablet Mode 5: Bottom Face - Lap-held

Mode	Channel	f (MHz)	Antenna	Results (mW/g)	
				1g-SAR	10g-SAR
802.11b	6	2437	Main	0.040	0.021

12. ENHANCED ENERGY COUPLING (KDB 447498)

According to KDB 447498, the test configuration with the highest 1-g SAR must be used to determine if additional SAR evaluation is required due to enhanced energy coupling at increased separation distances.

From the test results below, additional 1-g SAR evaluation is not required.

Test configuration	Band	Antenna-to-person distance (cm)		Peak SAR (mW/g)	E-field (V/m)	Lower than Initial (%)
Tablet mode Secondary portrait	2.4 GHz	Initial	Touch	0.251	11.45	
		Increased	5	0.123	8.03	49.2%
		Increased	15	0.046	4.92	37.5%

13. WORST-CASE SAR TEST PLOTS

WORST-CASE SAR PLOT

Date/Time: 11/13/2009 2:56:02 PM

Test Laboratory: Compliance Certification Services

Tablet - Secondary Portrait

DUT: Lenovo; Type: NA; Serial: NA

Communication System: 802.11bgn; Frequency: 2437 MHz; Duty Cycle: 1:1

Medium parameters used (interpolated): $f = 2437$ MHz; $\sigma = 1.92$ mho/m; $\epsilon_r = 53.1$; $\rho = 1000$ kg/m³

Phantom section: Flat Section

Room Ambient Temperature: 24.0 deg. C; Liquid Temperature: 23.0 deg. C

DASY4 Configuration:

- Area Scan setting - Find Secondary Maximum Within: 2.0 dB and with a peak SAR value greater than 0.0012W/kg
- Probe: EX3DV4 - SN3686; ConvF(6.48, 6.48, 6.48); Calibrated: 3/23/2009
- Sensor-Surface: 3mm (Mechanical Surface Detection)
- Electronics: DAE3 Sn500; Calibrated: 9/15/2009
- Phantom: Flat Phantom ELI4.0; Type: QDOVA001BA; Serial: SN:1003
- Measurement SW: DASY4, V4.7 Build 80; Postprocessing SW: SEMCAD, V1.8 Build 186

802.11b M-ch/Area Scan (7x9x1): Measurement grid: dx=15mm, dy=15mm

Info: [Interpolated medium parameters used for SAR evaluation.](#)

Maximum value of SAR (measured) = 0.247 mW/g

802.11b M-ch/Zoom Scan (7x7x9)/Cube 0: Measurement grid: dx=5mm, dy=5mm, dz=3mm

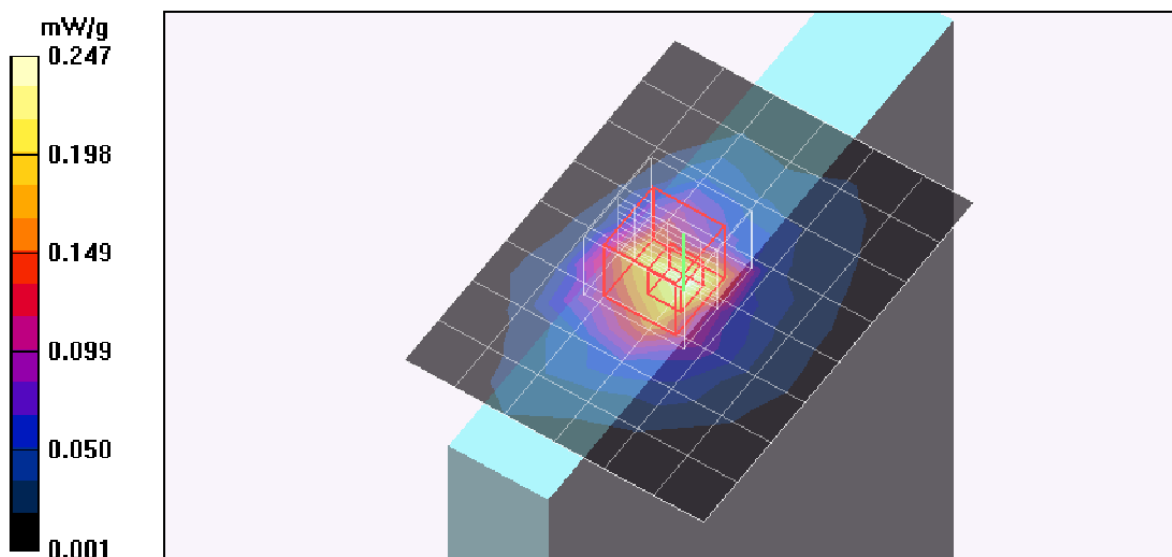
Reference Value = 9.71 V/m; Power Drift = -0.457 dB

Peak SAR (extrapolated) = 0.393 W/kg

SAR(1 g) = 0.191 mW/g; SAR(10 g) = 0.104 mW/g

Info: [Interpolated medium parameters used for SAR evaluation.](#)

Maximum value of SAR (measured) = 0.251 mW/g



14. ATTACHMENTS

No.	Contents	No. of page (s)
1	System Performance Check Plots	2
2	SAR Test Plots	8
3	Certificate of E-Field Probe – EX3DV4 SN 3686	10
4	Certificate of System Validation Dipole - D2450V2 SN:748	6