

Internal Photos of Daimler LFSPG-MH:



Fig. 1 : PCBs of Daimler LFSPG.MH (TOP)



Fig.2: Connectors of Daimler LFSPG-MH

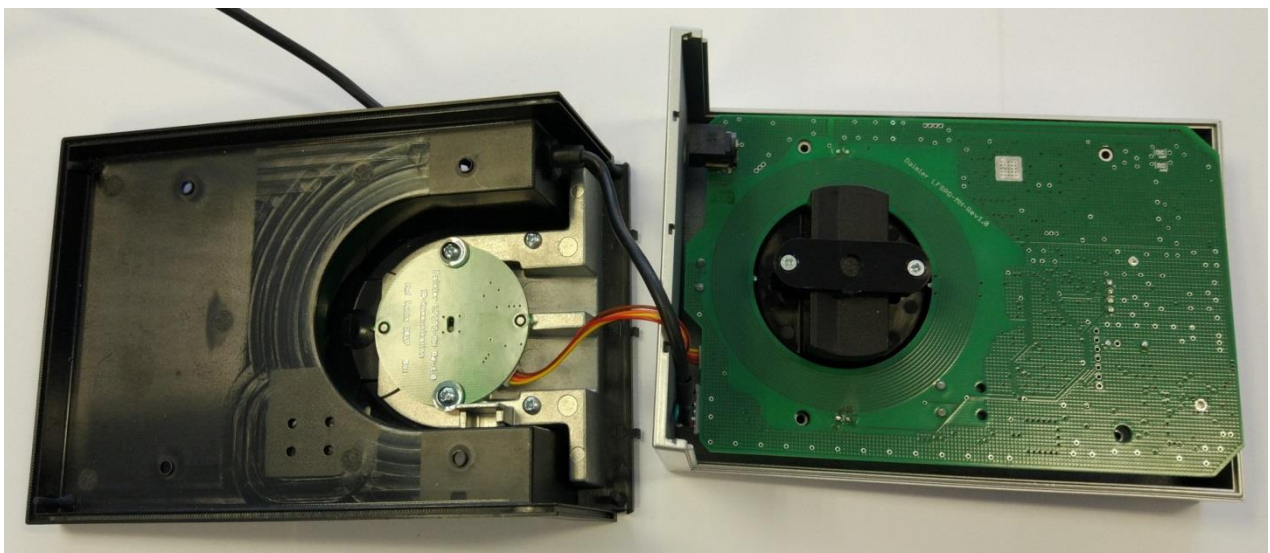


Fig.3: PCBs of Daimler LFSPG-MH (BOT)



Fig.4: Main PCB of Daimler LFSPG-MH

Contact Person: Daniel Klenner

(Huf Tools GmbH Velbert, Gueterstr. 17, 42551 Velbert, Germany, Tel.+49 2051 2767-773, Daniel.Klenner@Huf-Tools.de)