

## BATTERY INSTALLATION

The T-Rex uses 3 "AA" 1.5V batteries(included) and the Remote Control uses 2 "AAA" 1.5V batteries(not included). You will need to use a Phillips or Cross screwdriver to open the battery compartments.

- Using a screwdriver, remove the screw from the battery compartment.
- Open the battery compartment door and insert 2 "AAA" batteries (Fig. 1).
- Using a screwdriver, attach the battery compartment door back onto the remote.

## INSTALLING THE DINOSAUR'S BATTERIES

**NOTE: FOR BEST RESULTS, REPLACE DINOSAUR BATTERIES UPON PURCHASE.**

- Locate the battery compartment located on the side of the tail.
- Using a screwdriver, remove the screw from battery compartment.
- Open the battery compartment door and insert 3 "AA" batteries (Fig. 2).
- Using a screwdriver, attach the battery compartment door back onto the dinosaur's tail.

## CLEANING

- Use a soft and damp sponge only. Never drop water or any other liquid onto the Dinosaur.
- Do not immerse the product into water for cleaning.

## STORAGE

- Remove the batteries when the product is not in use for a long period of time.
- Put the product into its package when not in use and store neatly in a dry, cool location protected from direct sunlight.

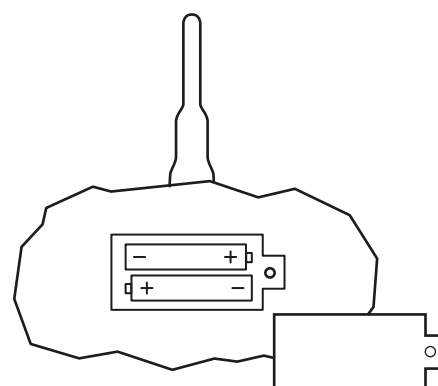


Fig. 1  
INSERT 2 "AAA" BATTERIES

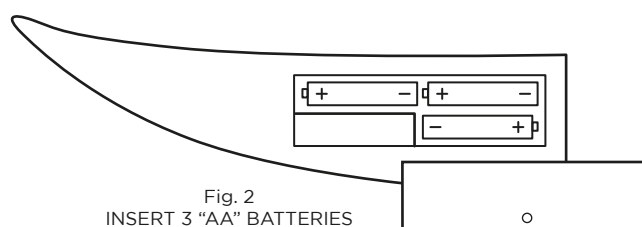


Fig. 2  
INSERT 3 "AA" BATTERIES

### BATTERY WARNING:

- Do not mix old and new batteries.
- Do not mix alkaline, standard (carbon-zinc), or rechargeable batteries.
- Alkaline batteries are recommended. Use only the specified voltage.
- Insert batteries using the correct polarity. Always use, replace, and recharge (if applicable) batteries under adult supervision.
- Do not charge with non-rechargeable batteries.
- Do not short-circuit the battery supply terminals.
- Do not dispose of batteries in a fire, batteries may explode or leak.
- Remove batteries before storing.
- Recycle or dispose of batteries according to federal, state, and local laws.
- Keep this package for future reference.

### WARNING:

- Changes or modifications to this unit not expressly approved by the party responsible for compliance could void the user's authority to operate the equipment.
- Inspect the product before every use. If the product appears damaged in any manner, discontinue use and discard immediately.

This device complies with Part 15 of the FCC Rules. Operation is subject to the following two conditions: (1) this device may not cause harmful interference, and (2) this device must accept any interference received, including interference that may cause undesired operation.

Warning: Changes or modifications to this unit not expressly approved by the party responsible for compliance could void the user's authority to operate the equipment.

NOTE: This equipment has been tested and found to comply with the limits for a Class B digital device, pursuant to Part 15 of the FCC Rules. These limits are designed to provide reasonable protection against harmful interference in a residential installation. This equipment generates, uses, and can radiate radio frequency energy and, if not installed and used in accordance with the instructions, may cause harmful interference to radio communications. However, there is no guarantee that interference will not occur in a particular installation. If this equipment does cause harmful interference to radio or television reception, which can be determined by turning the equipment off and on, the user is encouraged to try to correct the interference by one or more of the following measures:

- Reorient or relocate the receiving antenna.
- Increase the separation between the equipment and receiver.
- Connect the equipment into an outlet on a circuit different from that to which the receiver is connected.
- Consult the dealer or an experienced radio TV technician for help.

### SAFETY WARNINGS: PLEASE READ BEFORE USE

- Never aim or shoot the balls at other people.
- Adult supervision required.

Model NO: 1012362

© 2020 Discovery Communications, LLC. DISCOVERY™ and the related logos are trademarks of Discovery Communications, LLC, used under license. All rights reserved.  
Distributed by and © 2020 MerchSource, LLC. Irvine, CA, 92618. All rights reserved.  
For technical support, please call 1-800-374-2744  
Printed in China

KEEP THIS INSTRUCTION MANUAL AS IT CONTAINS IMPORTANT INFORMATION FOR FUTURE REFERENCE.

Due to continuous product improvements, the pictures on this manual may differ slightly from the actual product.



**WARNING:**  
**CHOKING HAZARD - Small Balls.**  
**Not for Children under 3 years.**

## RC T-REX

### RADIO CONTROLLED ACTION DINOSAUR

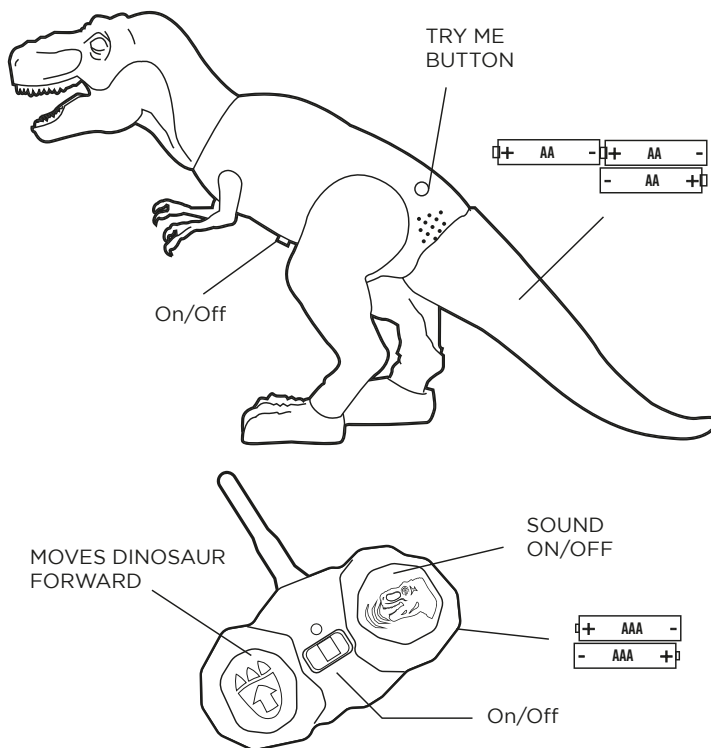
Thank you for your purchase of the Discovery RC T-Rex Radio Controlled Action Dinosaur ! Have fun with a T-Rex you control. Be sure to use this product in a safe, traffic free environment. Please read all instructions and warnings on this sheet prior to use. Keep this instruction sheet as it contains important information for future reference.

### CONTENTS

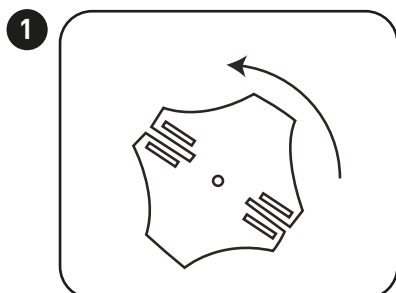
RC T-Rex

Infrared Remote Control

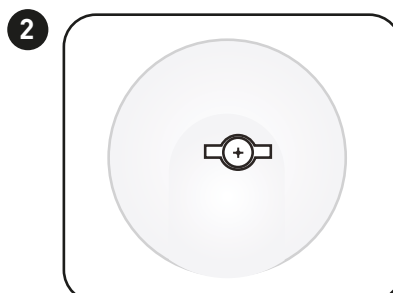
### FEATURES



### REMOVE THE REMOTE AND RC T-REX FROM PACKAGING

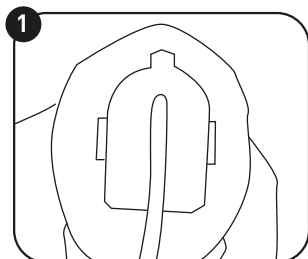


Remove the remote by turning counter clockwise the plastic keylock.

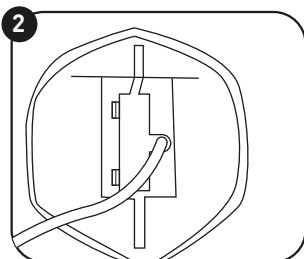


Using a Philips head screwdriver, unscrew the T-Rex RC from the insert.

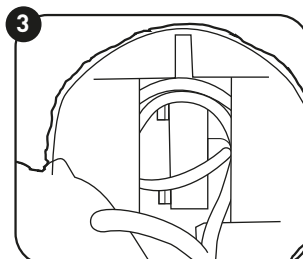
### ATTACH THE TAIL



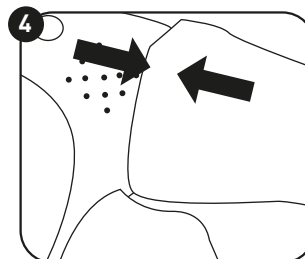
Locate the white cord connected to the dinosaur's body.



Note the recessed area on the inside of the tail. Continued on back.



Coil the white cord into the recessed area of the tail to close the gap between the tail and body of the dinosaur.



Align the recessed area of the tail to the body and press the tail into the body until it clicks.