

## 7-2. Album Manager



This menu enables you to make a new album to keep your digital photos, edit information about the album or delete a specific album from your well-organized album list.

### Χρεατινγ Α Νεω Αλβυμ

- Input a new name and a description of the album that you want to make and select the background music.
- Click the Locate button to locate the folder containing your photos.
- Click the **Add** button and you can find the abum name in the album list.

20

### Buttons

Locate - locate a folder

- Add - make a new album.
- Edit - edit the information about the existing album you select(name, folder, memo etc. )
- Delete - remove the existing album from the album list.
- Clear - clear input boxes.



- Home - return to the **Home** Menu.

Sound Recorder - record your voice (You can record a discription of the album as a wave file)

## 7-3. Photo Manager



This menu enables you to add a new photo to the album, edit information about the photo or remove a specific photo from the album.

### Adding A New Photo

Click the Folder button to select a photo that you want and input a short no about it.



Sound - play the recoding file for the selected photo.

Click the **Add** button and you can find a new serial number in the list.

View - show the selected photo.

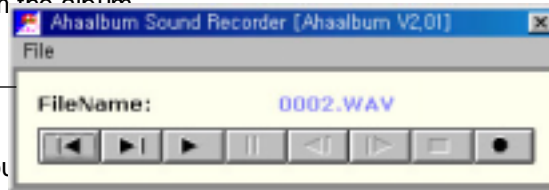


Folder - add a new photo or all the photos in the folder automatically

22

Add - add a new photo to the album.

- Edit - modify the information about the selected photo.
  - Delete - remove the selected photo from the album.
  - Clear - clear input boxes.
  - Home - return to the **Home** menu.
  - The Right Mouse Button Command
- Sound Recorder - record your voice (You as a wave file)



Movie Player - add movie files to the album

#### 7-4. Album Viewer

This menu enables you to view photos and movies in the album with various effects.



2



Sound - play the recoding for the selected photo or the current album.

Movie - play movie files in the album

Slideshow - slide show with the background music on

Home - return to the the **Home** menu

24

#### The Right Mouse Button Command.

- ✓ Slide Background - set the background image to be used for the slide show.
- ✓ Transition Time - set the time between displaying each slide.
- ✓ Memo Color - set the color of the text to be used for the slide show. Slideshow Type - play once or continuously.
- ✓ Album Book - view an album book without launching the Internet browser.
- ✓ Background Music On - if checked, slide show with the background music on
- ✓ Stop- stop the slide show.

#### 7-5. Book Maker

This menu enables you to make an album book consisting of htm files.

By the follwing 4 stpes, you can make a new book.

- A. Create Cover
- B. Create Section
- C. Put Stickers
- D. Enlarge Photo



#### Buttons



View- show the selected

Create - move to the **Create Cover** menu.

Reset - clear the selected photos.

Home - return to the **Home** menu.

The Right Mouse button Command

Using all photos - make a book with all photos in the ablum .

Using the selected photos - make a book with photos you select.

Using the existing books - make a book with the information of the exsting



This menu shows the list of album books in the current album according to the creation date. Here you can view, print and distribute the selected album book.

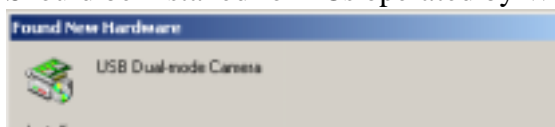
26

<div data-bbox="360 705 878 940" data-label="Image"> </div> <div data-bbox="306 844 435 879" data-label="Section-Header"> <h3>Buttons</h3> </div> <div data-bbox="305 879 1305 951" data-label="Text"> <p>Open - Launch the Internet browser so that you can view and print the selected book.</p> </div> <div data-bbox="305 953 1269 1024" data-label="Text"> <p>Copy - Copy all files related to the selected album to the distribution folder.</p> </div> <div data-bbox="305 1031 1331 1134" data-label="Text"> <p>Note: if you have movie files in the album, you have to copy them to the distribution folder manually because movie files in the album are not automatically copied.</p> </div>	<div data-bbox="258 1121 643 1159" data-label="Section-Header"> <h3>8. Management Information</h3> </div> <div data-bbox="305 1138 1331 1213" data-label="Text"> <p>Delete - Delete the selected book. (all htm files &amp; database file related to the selected book)</p> </div> <div data-bbox="305 1211 802 1249" data-label="Text"> <p>Home - Return to the Home Menu.</p> </div>
<div data-bbox="305 1159 1328 1228" data-label="Text"> <p>1. Do not use the camera in cold places (27/32°F or lower) or hot places (40°/104°F or higher).</p> </div> <div data-bbox="305 1228 1323 1337" data-label="Text"> <p>2. When any moisture inside the camera freezes, stop using the camera. In this case, keep the camera at room temperature for several hours to enable the moisture to evaporate.</p> </div> <div data-bbox="305 1339 1305 1413" data-label="Text"> <p>3. Use of improper batteries may cause leakage or breakage, fire or injury, or pollution of the environment by using the batteries.</p> </div> <div data-bbox="513 1392 685 1577" data-label="Image"> </div>	

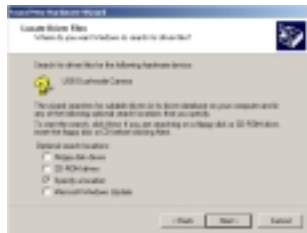
28

### 9. Installation Instruction for Windows 2000

As USB is not available on Windows 2000 and Windows 95, manufacturer's driver Should be installed for PCs operated by Windows 2000 or Windows 95.

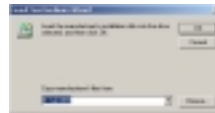


1. Upon connecting cable to USB port



<Image 4-4>

4.To start search for suitable driver,mark check on Specify a location and click **Next**.



<Image 4-5>

5.To locate driver,type drive where CD has been inserted and click **Ok**,Snial 2000 Driver

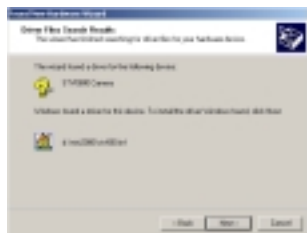
6.Select STV680.inf and click **Open**.



<Image 4-6>

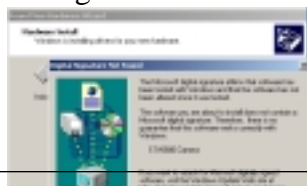


30

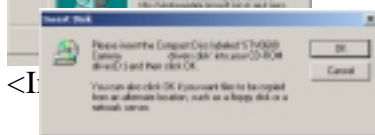


<Image 4-7>

7.Search results appears. Click **Next**

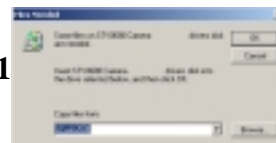


8.To proceed installation,Click **Yes** button.



<Image 4-9>

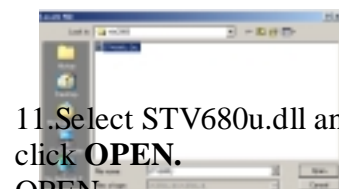
9.Insert Snail CD and then click **OK** button.



31

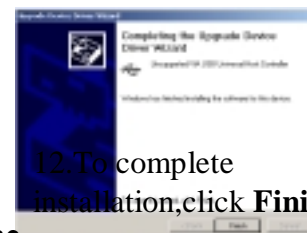
<Image 4-10>

10.Select directory Win2000 on CD-ROM and then Click **OK** button.



<Image 4-11>

11.Select STV680u.dll and click **OPEN**.



32

<Image 4-12>

12.To complete installation,click **Finish**.

### Battery Status

When the batteries are nearly empty, letters on LCD display begin to flicker. The camera will go to sleep off after 30 seconds of inactivity. During sleeping off of the camera, batteries should be replaced with new ones. For the pictures taken to remain,

batteries should be changed within three(3) hours from the moment flickering begins.

Warranty this product to be free from defects of material and workmanship for one(1) year from the date of purchase. During the warranty period, Hudson Tech will replace this equipment satisfactorily without charge. The replacement unit must be manufactured with Part of equipment of the same functionality. After one(1) year customer shall pay for parts, labor and service.

Hudson Tech warrants that software products will conform to published specifications in effect at the time of delivery for 90 days after purchase.

### Hudson Tech. Co., Ltd.

Μαϊν Οφφίχε : 5Φ Ωοοψουνγ ζεντυρε 1330-13 Σεοχηο-δονγ Σεοχηο-γυ  
Σεουλ Κορεα

Τελ : 82-2-523-9112      Φαξ : 82-2-523-9474

Φαχοτρψ : 812 Ηανσολ Τεχηο Τοων #812, 16-1 Δανγφονγ-δονγ, Κυνπο



# ***Snail Poto***

DSC SNAILPHOTO

## User Guide



copyright(c)2000 HUDSON TECH Co. Ltd, 



In this version 1.0 two modes  
are available,  
Snap image capturing mode  
and Videostream mode.  
This application was  
written with Delphi 5.

**Snail  
Poto**

Copyright(c)2000 HUDSON TECH Co. Ltd, **HUDSON TECH**

