

DYNAMIC SOUND & VISUAL EXPERIENCE

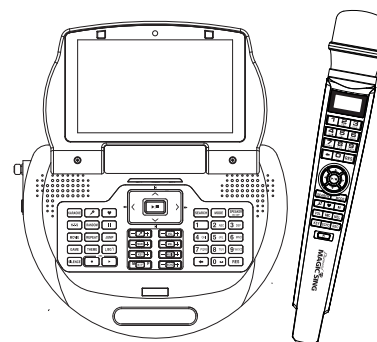
MAGICSING USER'S MANUAL



ALL-IN-ONE KARAOKE
ET21KV
VER.100

Thank you for your purchase

Please read this carefully before using your MAGICSING



Thank you for purchasing Enter Tech's MagicSing.
With this wireless karaoke system, you can enjoy singing.
Sing together and have fun with your family and friends.
Show off your talent anytime, anywhere!

User's Manual | ET21KV
VER.100

CONTENTS

Chapter 01. Introduction

Specifications	01-01
Basic Items	01-02
Optional Items	01-03

Chapter 02. How to Set up Your MAGICSING

How to Connect to a TV	02-01
How to Connect to a TV & Stereo (Sound System)	02-01
How to Change the Background Video using Other Video Sources	02-02
How to Convert [PAL] or [NTSC] mode of TV	02-02

Chapter 03. Product Guide

ET21KV Main Station	03-01
ET21KV Main Station & Wireless Mic Key Buttons	03-02
ET21KV Remote Control	03-08

Chapter 04. Functions and Settings

KARAOKE	
- Song Search	04-01
- Recording	04-03
- MY-MIC	04-05
- User's Contents	04-06
- Theme	04-07
- Jump	04-07
- Vocal Assist (Multiplex)	04-08
- Musical Notation	04-08
- User Background (SD card)	04-09
HOW TO SING	04-10
MOVIE	04-11
GAME	04-11
Configuration Menu	04-12
Software Installation	04-14
ET Manager	04-22
ET Encoder	04-25

Chapter 05. Optional Items

Recording Pack	05-01
Additional Song Pack	05-02

Chapter 06. Additional Information

Precaution	06-01
Troubleshooting	06-02
FCC Information to User	06-03

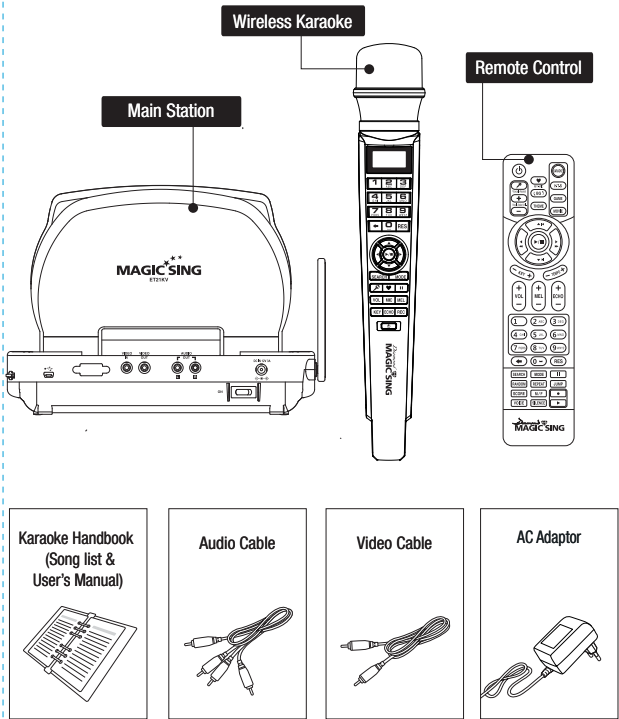
Chapter.01 - Introduction

SPECIFICATIONS

ET21KV MAIN STATION	
• Model No.	ET21KV
• Sound Engine	CT-500(SEIP-II)
• RF Frequency	2.4GHz ISM Band
• Dimension / Weight	260(W) x 75(H) x 190(D) mm / 1,065g
• Power Consumption	During the Stand-By : 30mA/360mW During the Playing - Karaoke JPEG Mode : 850mA/10.2W - Karaoke Moving Picture Mode : 1.2A/14.4W - Moving Picture Mode : 2A/24W
• Audio Output	Audio Output Stereo Line Out (Full scale Output) - 2Vrms -Speaker Out : 2W x 2
• Video Output	Composite 1Vp-p@750hm Load (NTSC)
• External Video Input	Composite 1Vp-p@750hm Load (NTSC)
• LCD Resolution	800 X 480 (7inch, TFT LCD)
• Video Resolution	720 X 480 (interlace, NTSC)
• USB(Host)	USB2.0, USB1.1Support
• USB(Device)	USB2.0(HI Speed), USB1.1Support
• Operating Temperature	0°C ~ 60°C
• Power Supply	AC Adaptor (DC 12V/3A)

WIRELESS KARAOKE	
• Model No.	EX19DD
• RF Frequency	2.4GHz ISM Band
• Battery	1.5V (AA) x 2 EA
• Dimensions	43.5(W) x 43.5(L) x 259(H) mm
• Weight	182g (without the batteries)
• Wattage	70mA / 210mW
• Operating Temperature	0°C ~ 60°C
• Effective Distance	Up to 10m unobstructed distance

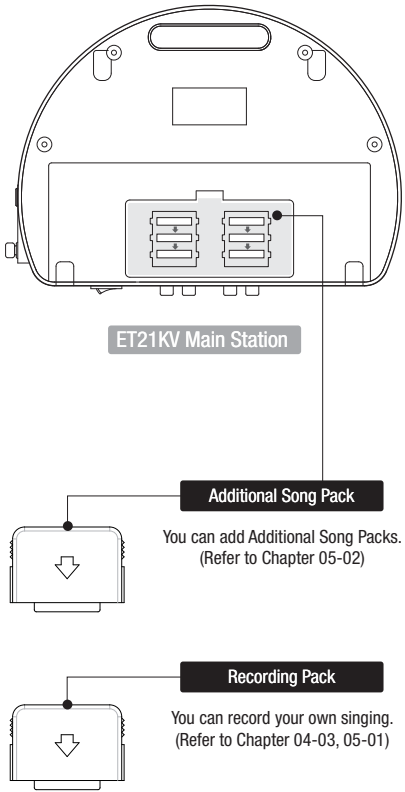
BASIC ITEMS



BASIC ITEMS

- | | |
|---|---|
| ET21KV Main Station | Karaoke Handbook (Songlist & User's Manual) |
| Wireless Karaoke x 2 ea / Battery AA x 4 ea | Remote Control / Battery AAA x 2 ea |
| USB Installation CD | Audio Cable |
| Video Cable | AC Adaptor |
| USB Cable | SD card |

OPTIONAL ITEMS

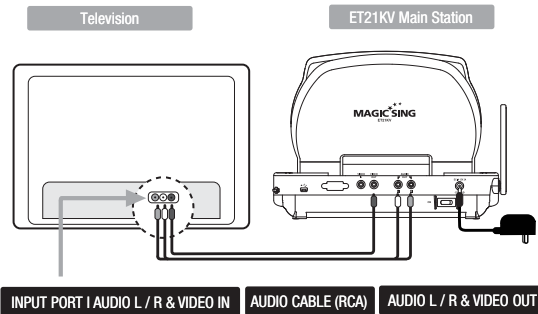


OPTIONAL ITEMS

- | | |
|----------------|----------------------|
| Recording Pack | Additional Song Pack |
|----------------|----------------------|

How to Set up Your MAGICSING - Chapter.02

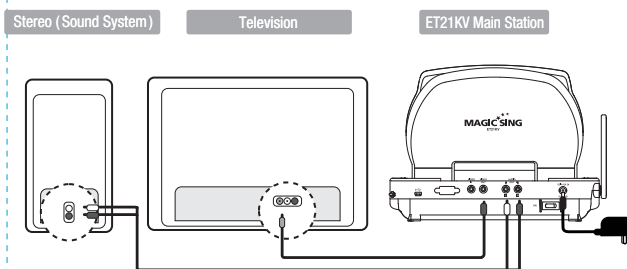
HOW TO CONNECT TO A TV



1. Connect the Audio / Video cable to the RCA jack terminal on your TV, as shown above. If there are only two RCA jack terminals on your TV (mono TV), connect the yellow jack (male) to the yellow RCA jack terminal and connect the white jack (male) to the other RCA jack terminal of your TV.

※ Please turn off the function “Automatic Volume Levelling” (AVL / AVC) on your television set.

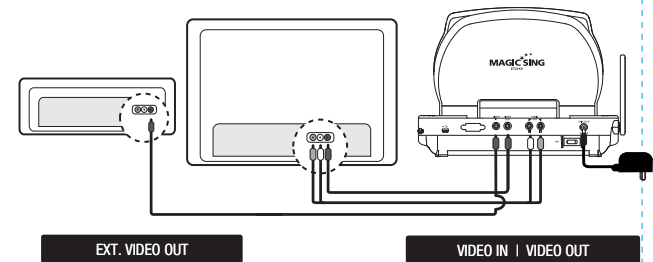
HOW TO CONNECT TO A TV & STEREO (SOUND SYSTEM)



1. Connect the yellow jack to the yellow RCA terminal on your TV. Connect the red and white jack to jack terminals on your stereo (sound system). You might need an extension cable if your stereo (sound system) is placed far away from your TV.

Chapter.02 - How to Set up Your MAGICSING

HOW TO CHANGE THE BACKGROUND VIDEO USING OTHER VIDEO SOURCES

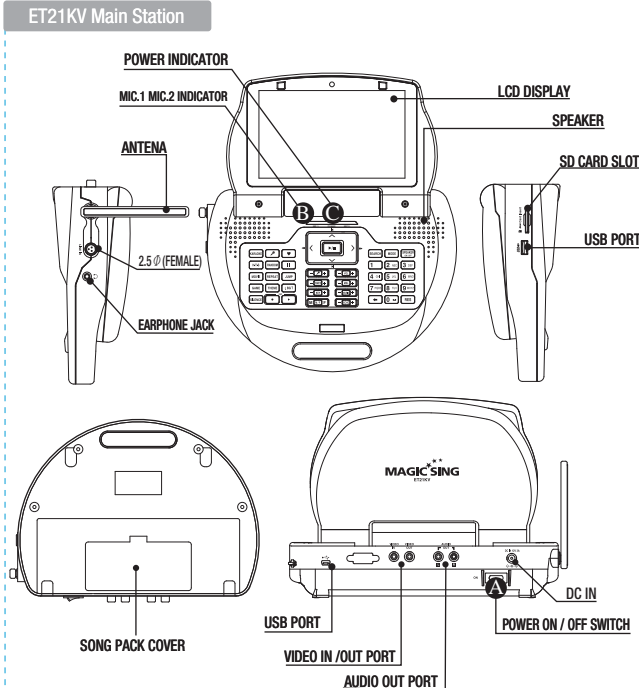


1. Connect the video cable to the VIDEO OUT jack terminal on other optional video sources (VCD, DVD, VIDEO).
2. Connect the other side of the video cable to the VIDEO IN jack terminal of MAGICSING.
3. Press [MODE + 0] on the mic or on the remote control to use other video sources as background by setting "EXT.VIDEO INPUT" on the "configuration menu".

HOW TO CONVERT [PAL] OR [NTSC] MODE OF TV

1. To convert to PAL mode, turn off the mic first.
Press and hold button [8] on the mic, and then press the [POWER] button using another finger until the word "PAL" appears on the TV screen.
(Do not release button [8] and the [POWER] button until the word "PAL" appears on the TV screen.)
2. To convert to NTSC mode, turn off the mic first.
Press and hold button [9] on the mic, and then press the [POWER] button using another finger until the word "NTSC" appears on the TV screen.
(Do not release button [9] and the [POWER] button until the word "NTSC" appears on the TV screen.)

ET21KV MAIN STATION



A POWER ON / OFF SWITCH

- Turns on or off the main station.

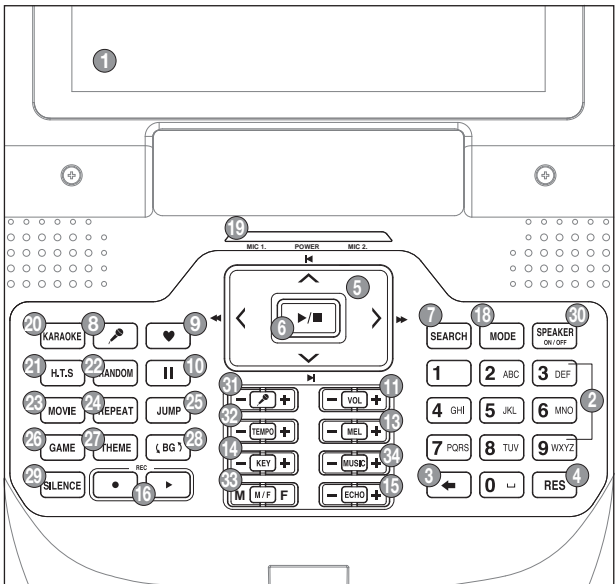
B WIRELESS MIC INDICATORS

- A blue light indicates that the wireless mic is connected to the main station.

C POWER INDICATOR

- A green light indicates that the ET21KV is turned on and ready for use.
- A red light indicates that the ET21KV is in the standby mode. Press the power button on the remote control or turn off the power button on the main station and turn it on again.
- No light indicates that the power button on the main station is in the off position. Please turn it on.

ET21KV MAIN STATION & WIRELESS MIC KEY BUTTONS



1 LCD DISPLAY

2 0~9 : Arabic numbers.

3 ◀ : Cancel character, exit current mode.

4 RES : Reserves and cancels a reservation.

5 NAVIGATION : Multi-function guide buttons.

6 PLAY / STOP : Plays & Stops a song or function.

7 SEARCH : Song search.

8 VOCAL ASSIST SETTING :

Shows the list of vocal assist songs / Vocal assist function ON/OFF.

9 MY-MIC : Saves your song's settings.

10 II : Pause.

11 VOLUME : Adjusts the volume.

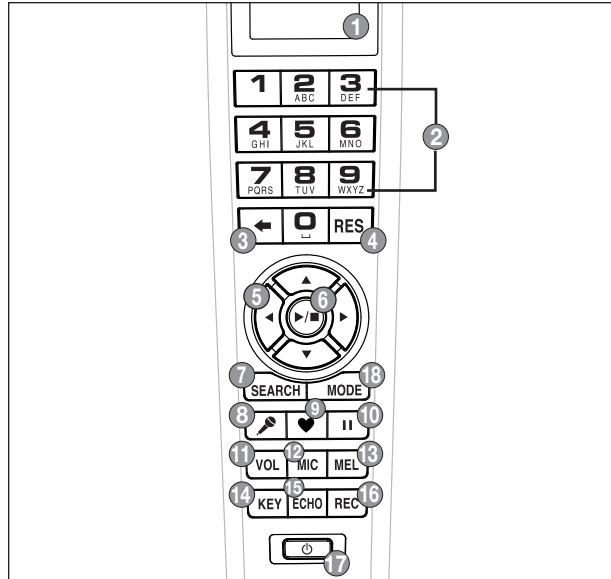
12 MIC : Adjust the volume of the main mic.

13 MELODY : Adjusts the melody level.

14 KEY : Adjusts the song key.

15 ECHO : Adjusts the echo level.

16 REC : Recording & Playback.



- 17 **POWER** : POWER ON/OFF.
- 18 **MODE** : Functions.
- 19 **MIC1. POWER. MIC2 LED**
- 20 **KARAOKE** : Moves to the "Karaoke" mode.
- 21 **H.T.S** : Moves to the "How To Sing" mode.
- 22 **RANDOM** : Random song select.
- 23 **MOVIE** : Moves to the "Movie" mode.
- 24 **REPEAT** : Section repeat.
- 25 **JUMP** : Skips the Prelude / Interlude of a song.
- 26 **GAME** : Moves to the "Game" mode.
- 27 **THEME** : Selects a background among 9 themes.
- 28 **BACKGROUND CHANGE** : Changes backgrounds.
- 29 **SILENCE** : Silence mode.
- 30 **SPEAKER** : On/Off Speaker.
- 31 **VOCAL ASSIST VOLUME** : Adjusts the volume of vocal assist song.
- 32 **TEMPO** : Adjusts the song tempo.
- 33 **M/F** : Converts voice to man's or woman's.
- 34 **MUSIC** : Adjusts the music volume.

1 WIRELESS MIC KEY BUTTONS FUNCTIONS

1. LCD DISPLAY

2. NUMBER BUTTON

3. CANCEL BUTTON



- Press this button to erase one by one what you input or to cancel some function you chose.

4. RESERVATION BUTTON



- Please select a song and press [RES] to reserve the song (The song number will be displayed on the screen under the "Reserved" menu.)
- Press [MODE] twice to exit the reservation list and go back to the on-screen list by pressing [▼] [▲].
- In case you want to delete a reserved song, select that song in the "reserved" list and press [RES] again.
- You can reserve up to 100 songs, but only 4 songs with their respective numbers will appear on a blue bar on the upper portion of the screen.
- This button also used to exit from some function you chose.

5. NAVIGATION BUTTONS



- Press these buttons to choose different modes, different songs and so on by scrolling up/down and left/right.

6. PLAY / STOP BUTTON



- Press [▶/■] once to play the selected song.
- Press [▶/■] again to stop playing the song.

7. SEARCH BUTTON



- Pressing [SEARCH] will prompt you to different modes of choosing a song.
- You can also search a song from the on-screen list by pressing [▼] [▲] or inputting characters. (Refer to Chapter.04-01)

8. VOCAL ASSIST BUTTON



- Press this button to see the list of vocal assist.
(Refer to Chapter.04–08)
- While singing a song, you can activate or deactivate vocal assist function by pressing this button repeatedly.

9. MY-MIC BUTTON



- This function enables you to save your own customized settings over the song you chose.
- While singing a song, adjust settings such as the volume, melody, echo, etc., press [♥] on the mic to save the settings.
- To see the stored [MY-MIC] song list, press [♥] again.
- Press [▼] [▲] to select the song you wish to sing again with the adjusted settings. Press [▶/■] to play the song and press [RES] to delete it from the list.
- The lists containing the customized settings will be retained even after turning off the ET19KV.

10. PAUSE BUTTON



- Press this button to pause the song you are singing.
- After pressing this button, you can also enjoy the "How to Sing" function by using the navigation buttons.

11. VOLUME BUTTON(for wireless mic)



- When you press [VOL], two different sub volume control menus appear on the TV screen ① Music (press once)
② Vocal Assist : Multiplex (press two times).

12. MIC BUTTON



- Press [MIC] to adjust the volume of the main mic then press [▼] [▲] to decrease / increase the volume.
- This setting will remain until the product is reset or the values are changed by users.

13. MELODY BUTTON



- Press this button, and then use the navigation buttons to adjust the melody levels of a song.

14. KEY BUTTON



- Press [KEY] and then press [▼] [▲] to decrease / increase the pitch level while singing a song.
The TV screen will display the range of keys (-7 ~ 8) with the default value [0] on the key bar at the upper part of the screen.
- At the end of the song or when you press [▶/■] to stop the song, this setting will return to the initial default value [0].

15. ECHO BUTTON



- Press this button and then use the navigation buttons to adjust the ECHO levels of a song.

16. RECORD BUTTON



- Choose / select a song first before recording.
- Press [MODE + REC] to start recording.
- Press [▶/■] to stop recording.
- Press [REC] to start the playback of the song.

17. POWER BUTTON



- Turns on or off the mic.
Press [POWER] slightly to turn it on.
Press [POWER] for 3 seconds to turn it off.
- When there is no input signal within 10 minutes, the power will be turned off automatically.

18. MODE BUTTON

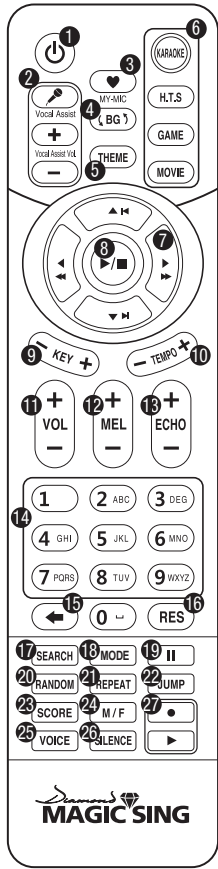


- You can see the function menu bar on the upper screen by pressing [MODE]. First, find a function you want to use by pressing [▼] [▲] and then press [▶/■] to prompt you to the sub-menu.
Press [▼] [▲] then [▶/■] to choose an option.
- [MODE] is used in conjunction with other buttons to access secondary functions.

2 MODE FUNCTIONS

[MODE]+[1]	VOLUME (3 Different Sub Volume Control Menus Appear) ① Music volume control 0~15 / ② Melody volume control 0~15 ③ Vocal Assist volume control 0~15
[MODE]+[2]	TEMPO (Adjusts the Tempo of a Song) The range of the tempo adjustment is between -7 ~ 8, and you can select a tempo at which you want to play the song by selecting a value from this scope.
[MODE]+[3]	KEY (Adjusts the Level of the Pitch) The range of the pitch adjustment is between -7 ~ 8, and you can select the pitch level.
[MODE]+[4]	SEARCH (Song Search Function) Look for your favorite song.
[MODE]+[5]	EFFECT (Musical Effects) : 4 Different Sub Menus Appear ① Mic Echo volume control 0~15 ② Instrument : You can change the melody instrument by using [▼] [▲] [◀] [▶] to one of the 8 instrumental sounds while singing a song. ③ Voice change : Mic voice alteration function that can change your voice either to female voice or to male voice. ④ Vocal assist ON / OFF
[MODE]+[6]	PLAYING (Technical Effects) : 5 Different Sub Menus Appear ① Jump : Skips the prelude or interlude ② Continuous Playback : If you wish to continue playing songs in sequential order, select a starting song and press MODE → 6 → 2 (for example, if you select song number 241, play the song, and then press MODE → 6 → 2). ③ Random Play : MagicSing randomly chooses a song for you. ④ Pause : A song pauses. Press [▶/■] to continue playing. ⑤ Selected Section Repeat : Repeats a certain section in a song. ※ Press [MODE + 6 + 5] to set the starting point and [MODE + 6 + 5] again to set the ending point. Pressing [MODE + 6 + 5] 3rd time turns off this function. ※ This "selected repeat function" is not available for the prelude and interlude sections of a song
[MODE]+[7]	USER'S CONTENTS ① USER'S JPEG / ② MP3
[MODE]+[8]	REC & PLAY : 4 Different Sub Menus Appear ① Record ② Playback (Playing the recorded song) ③ Chain Recording ④ Chain Replay
[MODE]+[9]	SPECIAL EFFECT : 5 Different Sub Menus Appear ① Musical Notation (Key Note Guide) / ② My-Mic / ③ Theme : Background Themes (9 background themes to choose from) and Scoreboard (Records your scores at the end of each song) / ④ Silence : Silent mode (you can choose from "level 1", "level 2", and "off") / ⑤ Lyrics ON / OFF
[MODE]+[0]	CONFIG. (Configuration)

ET21KV REMOTE CONTROL



- ❶ **POWER** : POWER ON/OFF.
- ❷ **VOCAL ASSIST SETTING** : Vocal Assist ON / OFF
- ❸ **MY-MIC** : MY-MIC.
- ❹ **BACKGROUND CHANGE** : Changes backgrounds.
- ❺ **THEME** : Selecting background image.
- ❻ **SHORTCUT** : Guides directly to some modes.
- ❼ **NAVIGATION** : Mult-function guide buttons.
- ❽ **PLAY / STOP** : Plays & Stops a song or function.
- ❾ **KEY** : Adjusts the song key.
- ❿ **TEMPO** : Adjusts the song tempo.
- ⓫ **VOLUME** : Adjusts the volume.
- ⓬ **MELODY** : Adjusts the melody level.
- ⓭ **ECHO** : Adjusts the echo level.
- ⓮ **0~9** : Arabic numbers.
- ⓯ **←** : Cancel.
- ⓰ **RES** : Reserves and cancels a reservation.
- ⓱ **SEARCH** : Song search.
- ⓲ **MODE** : Functions.
- ⓳ **II** : Pause.
- ⓴ **RANDOM** : Random song select.
- ⓵ **REPEAT** : Section repeat.
- ⓶ **JUMP** : Skips the Prelude / Interlude of a song.
- ⓷ **SCORE** : Changes the level of difficulty.
- ⓸ **M/F** : Converts voice to man's or woman's
- ⓹ **VOICE** : Changes the voice.
- ⓺ **SILENCE** : Silence mode.
- ⓻ **REC** : Recording & Playback.

KARAOKE

1 SONG SEARCH

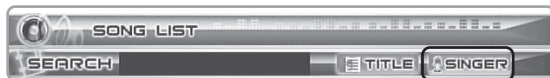
I. Entering the Song Search Mode

- Press [SEARCH] or [MODE+4] on the remote control to enter the Song Search Screen.



II. Buttons for the song search mode on the remote control

- [SEARCH] : Press [SEARCH] repeatedly to select one of these three modes below.
 - 1) Searching by Title : You can search for a song by typing some letters or numbers or special characters of the song title. (Refer to "IV. How to Search a Song" on the next page, chapter 04-02)
 - 2) Searching by Singer : You can search for a song by typing some letters or numbers or special characters of the singer's name. (Refer to "IV. How to Search a Song" on the next page, chapter 04-02)
 - 3) Exit Mode : Neither the "title" icon nor the "singer" icon will be highlighted on the screen.
- [←] : Press this button to erase characters.
- [MODE] : Pressing this button repeatedly while keying in characters toggles you to either the letters, numbers or special characters.



III. Exiting the "Song Search" mode

- After entering the "song search" mode, search a song using [▼] [▲] [◀] [▶] and play the song by pressing [▶/■] or reserve the song by pressing [RES].
- After entering the "song search" mode, set it to the "exit mode" by pressing [SEARCH] and end the search by pressing any number button. (If there are reserved songs, the list containing those reserved songs will be displayed on the screen.)

IV. How to Search a Song

After entering the song search screen, press [MODE] to set one of the three input methods below.

- ① Input letters
 - [1] [2] A → B → C [3] D → E → F [4] G → H → I [5] J → K → L [6] M → N → O [7] P → Q → R → S [8] T → U → V [9] W → X → Y → Z [0] SPACE
- ② Input numbers
 - [1] → 1 [2] → 2 [3] → 3 [4] → 4 [5] → 5 [6] → 6 [7] → 7 [8] → 8 [9] → 9 [0] → 0
- ③ Input special characters
 - [1] . → , → : → ; [2] ' → " → ` [3] _ → = → ~ [4] + → - → * → / [5] ! → # → \$ → % [6] & → ? → @ [7] ^ → w → l [8] (→) → < → > [9] [→] [0] SPACE



(The search function disregards spaces. E.g. : If you want to search a song whose title is "A DONDE VOY," you only have to enter "AD" without space between characters to execute the search.)

- Press the [0] ~ [9] buttons to input characters.

- Examples

To enter "TOU" : Press [8] once → [6] three times → [8] two times

To enter "ABC" : Press [2] once → [2] two times → [2] three times



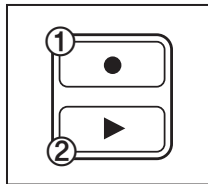
2 RECORDING

Use this function to record your singing(VOICE with the MUSIC) and to playback your recorded singing performance.

1. RECORDING TO THE MEMORY IN THE MAIN STATION

In case of no SD card and/or Recording Pack on the main station, follow the procedure below.

How to Use:



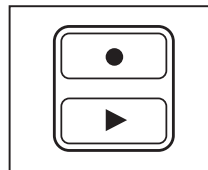
- 1) Select a song.
- 2) Press [●] the remote control to start recording (①).
- 3) To stop : Press [►/■].
- 4) To do playback : Press [►] on the remote control (②).
- 5) To stop the playback : Press [►/■].

- ※ A song recorded less than two seconds will not be recorded.
- ※ You can record a song of up to five minutes long.
[approximately for 1(one) song]

2. RECORDING TO AN SD CARD AND/OR RECORDING PACK

You can record your own singing into an SD card or a Recording Pack. If both the SD card and Recording Pack inserted at the same time, you need to decide which one to use.
(The recording pack looks exactly the same as an additional song pack but contains no songs and its data is replaceable.)

How to Use:



- 1) Insert an SD card or Recording Pack before turning on the main station.
- 2) Select a song.
- 3) Press [●] under the "RECORD" section on the remote control to start recording
- 4) To stop, press [►/■].

- 5) To see the list of the recorded songs, press [►] the remote control.
- 6) To play back the song, choose a recorded song first by pressing [▼] [▲] [◀] [▶] on the remote control. After selecting the song the song, press [►/■] on the remote control.
- 7) To stop the playback, press [►/■].
- 8) To delete a recorded song, choose the song and press [RES].

9) Chain Recording

To record multiple songs nonstop choose the songs you want to record and reserve them. Next press the "Chain Recording" button to start singing & recording.

Consecutively all reserved songs are played and recorded in order.

10) Chain Replay

To play multiple recorded songs select the song you want to play first from the list. All recorded songs are replayed and stopped by the end of the list.

- ※ You can't record your singing to an SD card when MOVING PICTURES are playing. While an SD card or Recording Pack is being used, your singing cannot be recorded on the main station memory.
- ※ When an Additional Song Pack is used on the main station, songs recorded from the Additional Song Pack can be played or deleted too.
- ※ You cannot record your singing performance in the middle of the song. Therefore, even if you press [●] on the remote control while singing a song, the song stops, restarts, and then the recording takes place.
- ※ Settings such as tempo or key should be set in advance as these cannot be changed while the song is being recorded. Also, during the recording, certain functions such as continuous play or pause are not available.
- ※ Recording time
 1. Recording Pack : About 180 minutes (NAND 1Gb)
 2. SD card : About 60 Hours (2GB)
(In case there is no files on the SD card)

3. HOW TO SET UP A RECORDING PACK & AN ADDITIONAL SONG PACK

CAUTION: TURN THE POWER OFF FIRST.

It is very important to power off first before removing or inserting a recording pack or an additional song pack

1. Locate the back cover of main station. Open the back cover.
2. The arrow on the top of a recording pack or other packs should be pointing towards the main station head. Insert any pack into one of the 6 slots in the back of the main station and carefully press it. A click sound indicates that it is properly inserted.
3. Close the back cover. Turn the power on.

3 MY-MIC

This function enables you to save your own customized settings over the song you chose such as the volume of music, melody, microphone, echo effect, and vocal assist as well as the tempo, key setting. You can recall these settings when you select and sing the song again.

1. SAVING ADJUSTED SETTINGS

- While singing a song, adjust settings such as the volume of music, melody and so the way you want to customize the song, and then press [♥] on the remote control while the song is still playing.
- The song with the adjusted settings will be saved in the [MY-MIC] song list.
(If the same song is already in the list, the song will be updated with new settings.)
- The lists containing the customized settings will be retained even after turning off the ET21KV.

2. SELECTING & PLAYING A SONG

- Press [♥] to see the [MY-MIC] song list while not playing any song.
- Select the song from the list and press [▶/■] to play the song with the stored settings.

3. DELETING A SONG

- Press [♥] while selecting a song to see the stored list of MY-MIC songs.
- Press [▼] [▲] [◀] [▶] to select the song you want to delete, and press [RES] to delete it .

4 USER'S CONTENTS

Users can play their own contents (MP3 and Picture) saved in an SD card. Press [MODE + 7] to explore.

1. USER'S JPEG

- Play & Enjoy your own picture through TV.
- Before putting JPEG files into an SD card, the files have to be converted by ET-MANAGER.
(Refer to the chapter 04-09 "USER BACKGROUND" section)
- Insert the SD card into ET21KV and turn on the power.
- Select this function for your pictures to be shown on the screen.
- To move pictures forward and backward, press [◀] or [▶].
- To exit, press [◀] or [RES].

2. MP3

- Play & Enjoy MP3 files through TV.
(No need to convert any MP3 files and to use any music player.)
- Move the downloaded MP3 files into the "MP3" folder on the SD card from your PC.
- Insert the SD card into ET21KV and turn on the power.
- When you select this function, a MP3 list will appear on the screen.
- Select a song from the list and press [▶/■] to play the song.
- Follow the direction of "Control Bar" shown on the screen.
- To exit, press [◀] or [RES].

※ HELP = Press [MODE]

5 THEME (BACKGROUND THEME AND SCOREBOARD)

1. THIS FUNCTION CAN ONLY BE SET BEFORE CHOOSING A SONG

- Press [MODE + 9 + 3] or [THEME] on the remote control for this function.

2. TO FINISH THIS FUNCTION, PRESS [RES]

3. BACKGROUND THEME

- You can select any theme from a set of nine different themes as screen background.
- Press number buttons [1] ~ [9] or [▼] [▲] [◀] [▶] to set the theme you want.

[1] Love	[2] Party	[3] Summer
[4] Nature	[5] Carnival	[6] Sports
[7] City	[8] Country	[9] Tour

Once a background theme is set, only the pictures related to the selected theme will be shown on the screen.

4. SCOREBOARD

- The scoreboard shows the corresponding song numbers and the scores of the songs that you have played.
(Only 7 songs will be displayed on the screen.)

6 JUMP (PRELUDE / INTERLUDE SKIP)

- You can use the [JUMP] function only during the prelude or the interlude of a song.
- Press [JUMP] on the remote control to skip the prelude or the interlude part of a song.

7 VOCAL ASSIST (MULTIPLEX)

The song comes up with a professional singer's voice with the music. This feature is available only songs indicated "Vocal Assist" on the TV screen and song book.

1. VOCAL ASSIST [ON]

- If you wish to activate this function, press the [🎤] on remote control or [MODE + 5 + 4] to turn it ON, while singing a multiplex song.
- The voice will fade out when you sing a song and if you stop singing, the voice will fade in.

2. VOCAL ASSIST [OFF]

- If you wish to deactivate this function, press [🎤] or [MODE + 5 + 4] to turn it OFF, while singing a multiplex song, which enables you to sing along with the singer's voice.
- If you do not want to hear any voice of the vocal assist at all, press [–] button of [Vocal Assist] on the remote control, and then the volume bar will appear on the upper part of the TV screen. Then press [–] until it reaches "0".

3. VOLUME ADJUSTMENT

- Press Vocal Assist [–], [+] on the remote control to adjust the volume of the vocal assist until it reaches a desired level.

8 MUSICAL NOTATION (KEY NOTE GUIDE)

- Press [MODE + 9 + 1] on the mic to see the song list containing only the songs with this note guide function.
(This function is available only for the songs in the list.)
 - Choose a song from the list and play the song.
After that, press [MODE + 9 + 1] on the mic to choose one of the two settings which are "Normal", and "OFF".
 - Normal** : Displays the musical notes on the upper part of the screen with the original key of the song.
 - OFF** : Does not display any musical notes.
- ※ A musical notation appears on the upper part of the screen as soon as a song starts.
 - ※ This gives the user an idea of the key/pitch of the song he/she is about to sing.

9 USER BACKGROUND(SD CARD)

1. BACKGROUND IMAGES

- If you have background images in a folder named "BACKGROUND" on your SD card, you can display them on the TV screen when you select "USER'S JPEG" mode.

2. HOW TO USE

- Install "ET MANAGER" on your computer using the CD provided with the mic.
- Execute "ET MANAGER".
- Change the format of image files that you have by selecting "BACKGROUND IMAGE".
- When changing the image file format, these files are stored in a designated folder with the format of "*.ebj".
- Move the converted image files into the "BACKGROUND" folder on the SD card, and insert the SD card into the slot of the main station.
- ※ If the SD card drive is designated as "E : \", and the converted image file is "image.ebj", move the "image.ebj" into the "E:\BACKGROUND" folder.
- ※ Image file formats that you can convert into ".ebj" format include Bitmap file (*.bmp), JPEG file (*.jpg, *.jpeg), TIF file (*.tif, *.tiff), and GIF file (*.gif).
- ※ For the detail information, refer to "ET-MANAGER" section. (Chapter.04-22)

HOW TO SING

1 SINGING PRACTICE

This function is for users to keep practicing a particular part of a song they want by moving the part of the song forward and backward. You also can find any particular parts of a song with its play time as well.



1. PURPOSE

- When you want to repeat some part of the song over and over to practice.
- When you want to move to some part of song without waiting.
- When you want to memorize some part of song.
- When you want to go backward to repeat singing.

2. HOW TO USE

- 1) Press [II] while singing.
- 2) Press [▼] [▲] [◀] [▶] to show lyrics.
- 3) Press [▼] [▲] to go forward or backward.
- 4) Press [▶/■] to play.
- 5) Press [II] again if you want to repeat the part and follow the same procedure from 2) above.

3. EXIT

To change categories or exit from "How to Sing", press [◀] .

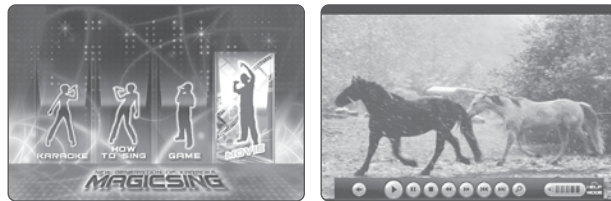
2 TUNING METER

This is a function in which you can check if your notes(scores) from your singing are correct with the piano keys.

- Press [9] to change female voice or to male voice.
- Press [0] to change the musical instruments.
- o exit, press [◀] or [RES].

MOVIE

This mode is for users to enjoy music videos, moving pictures and their own contents downloaded from the internet such as MTV, movies, TV shows.



1. HOW TO USE

- 1) Press the **[MOVIE]** button located on the upper part of the remote control.
- 2) When the list of movies is shown, press the **[] []** buttons to navigate through movie files, and then select the movie file you want to play.
- 3) Press **[▶/■]** to play or stop.
- 4) Press **[◀◀] [▶▶]** to move it faster (Pressing once : x2 faster, twice : x4 faster) and then press **[▶/■]** to play.
- 5) Press **[▼] [▲]** to select another movie file you want to play.
- 6) Press **[+] [-]** under the **[VOLUME]** section on the remote control to adjust the volume.
- 7) **ZOOM** : Press **[0]** **HELP** : Press **[MODE]**

- ※ If the capacity of a movie file is too big due to its high definition, some delay on its video and sound may occur.
- ※ ET21KV supports an SD memory card up to 8GB

2. EXIT

To change categories or exit from "Movie", press **[◀]**.

GAME

When you select a game, its instructions will be displayed on the TV screen before the game starts.

- To restart the game, press **[MODE]**.
- To exit, press **[◀]** or **[RES]**.

CONFIGURATION MENU

1. Press **[MODE]+[0]** to enter the configuration menu.
 - [1] Select a function using the **[▼] [▲]** buttons.
 - [2] Change the mode pressing the **[◀] [▶]** buttons.
 - [3] To exit configuration, press **[MODE]**.

2. Press **[MODE]** to exit the configuration.

3. CONFIGURATION OPTIONS



- [1] **SELECTING BACKGROUNDS** : Users can select one of the four types of background images as below.
 - 1) **MAGIC SING JPEG** :
Showing built in JPEG image files as a background.
 - 2) **EXT-VIDEO INPUT** :
Showing external videos as a background.
 - 3) **MOVING PICTURE(SD)** :
Showing moving pictures (video files) from a SD card.
 - 4) **MOVING PICTURE(USB)** :
Showing moving pictures (video files) from a USB memory.
 - 5) **USER'S JPEG** :
Showing the user's JPEG files from an SD card.
- [2] **LYRICS BAR** : ON (A blue bar behind lyrics appears) / OFF.
(The blue bar disappears)
- [3] **MIC V.C.** : Changes your voice either to a female's or male's.
(The "OFF" mode means to go back to your own voice)
- [4] **AUTO POWER OFF** : ON (If there is no action for 10 minutes, automatically shuts down.)
OFF (Power stays on until user shuts down.)
- [5] **SONG DISPLAY** : Sets the order of song list displayed on screen.
Lists can be displayed by the title or song number.

[6] SCORE CHECK

1) BEGINNER :

This level only evaluates your tempo when you sing a song.

2) AMATEUR :

This level evaluates both tempo and pitch when you sing a song. Singing in suitable chord is accepted.

3) PROFESSIONAL :

This level evaluates both tempo and pitch based on the original Song's key and tempo.

4) OFF :

Turns off(hides) score check function when you sing a song.

[7] **REAL TIME SCORE** : Shows your score throughout the whole song your are currently singing if you turn this function on.

[8] **SONG COUNTDOWN** : Sets the countdown (4, 3, 2, 1) display ON/OFF.

[9] LYRICS LINE :

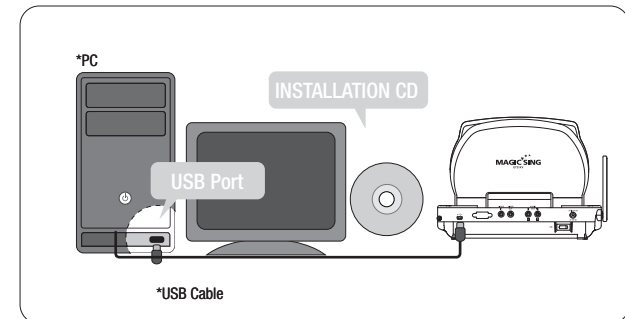
Selects the number of lyric lines shown on the TV screen (2 lines, 3 lines, Auto).

[10] **LYRICS POSITION** : Sets the position of lyrics on the screen. (Center, Left-Right, All Mixed)

[11] **LANGUAGE** : Selects the language for the system.

SOFTWARE INSTALLATION

Installing the USB driver, ET manager and ET encoder in your PC :



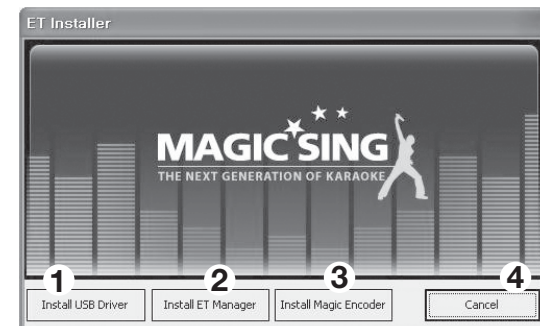
1. Enables you to use your own images or pictures in your computer as MagicSing background pictures on TV.
2. Enables you to convert the recorded songs from the Recording Pack to your PC as MP2 files.

Note : In the absence of the Installation CD, you can install the ET manager and USB driver softwares in your PC by downloading them from our website. (www.enter-tech.com)

1 HOW TO INSTALL

USB DRIVER + ET MANAGER + ET ENCODER

Insert the Installation CD into your PC, and then you will see the pop-up screen as shown below.

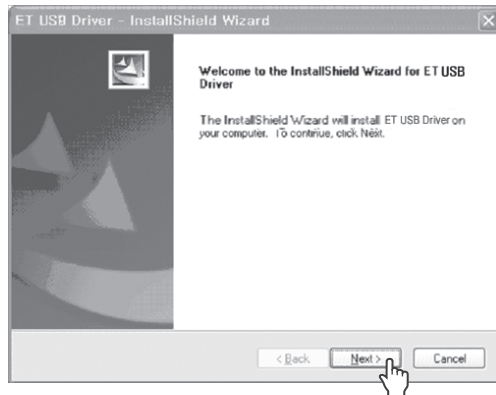


Note : Please do not connect MagicSing to a PC by USB cable before installing "Install USB Driver".

1) USB Driver Installation

This installation should be completed in advance to execute ET Manager. Click "Install USB Driver" (①) and follow the below instruction of "ET USB Driver - InstallShield Wizard" as shown below.

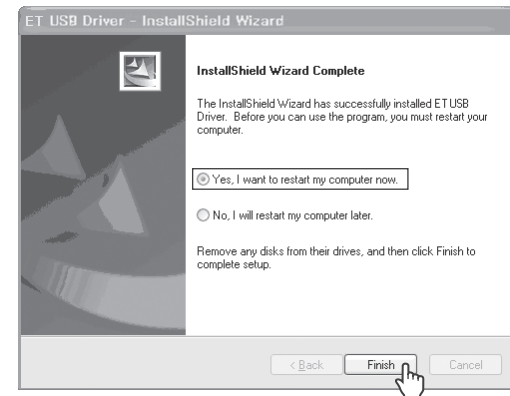
a) Click "Next" to start the installation.



b) Click "Continue anyway" to proceed.



c) Select "Yes" and click "Finish" to restart the computer.

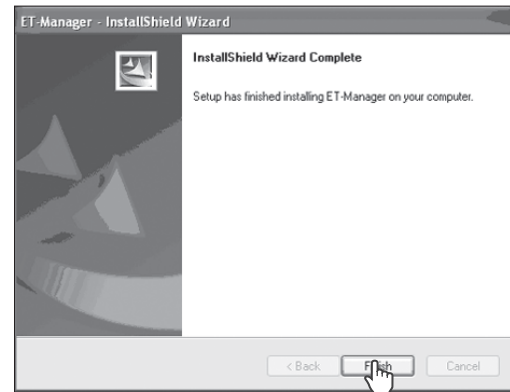


2) ET Manager Installation

After restarting the computer, take the "Installation CD" out and put it back into your PC again.

Click "Install ET Manager" (②) on the first pop-up screen and follow the instructions of "ET Manager InstallShield Wizard".

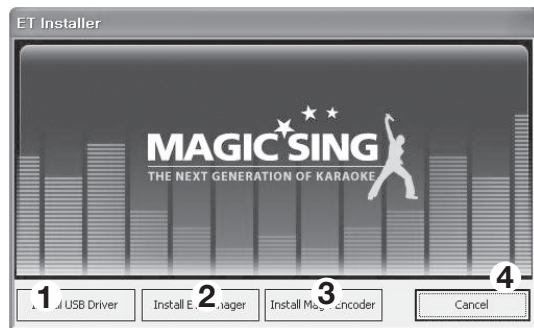
When you see the pop-up screen below, click "Finish" to complete the ET Manager installation.



3) EXIT

After completing the two previous installations, you will see the screen below again.

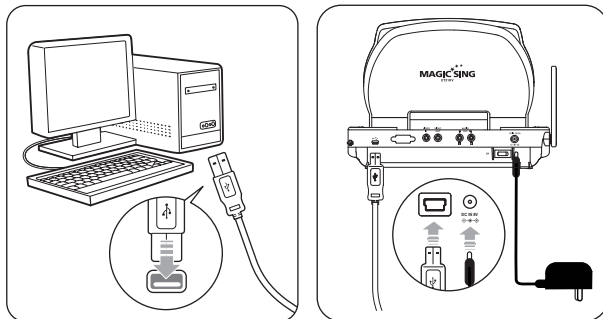
In order to exit, click "Cancel" (④).



And follow the below steps to execute the ET Manager properly.

2 HOW TO CONNECT MAGICSING TO A PC WITH A USB CABLE

1. Turn on the power of main station.
2. Plug the USB cable in the PC's USB port as shown in the picture below.
3. Plug the USB cable in the MagicSing's USB port as shown in the picture below.



"USB CONNECTED" will appear on TV SCREEN.

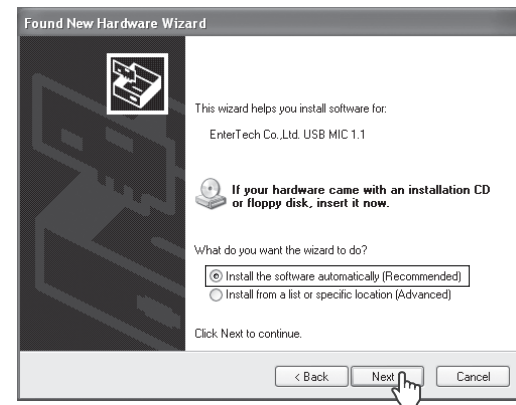
4. When you connect MagicSing to a PC for the first time, the "Found New Hardware Wizard" window below will show up as it will try to search the USB driver in your PC system.

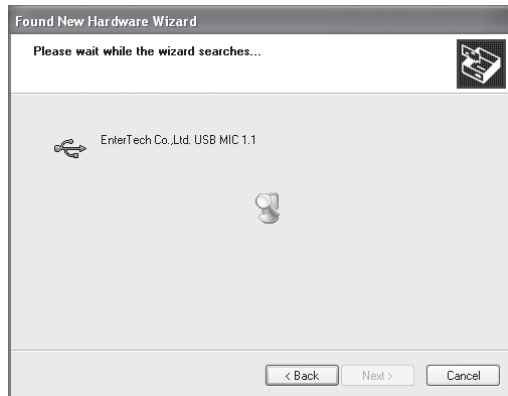
(In order to operate "ET manager", the following steps should be completed.)

- a) Click "Yes, this time only" and "Next" to continue.



- b) Click "Install the software automatically (Recommended)" and "Next" to continue.

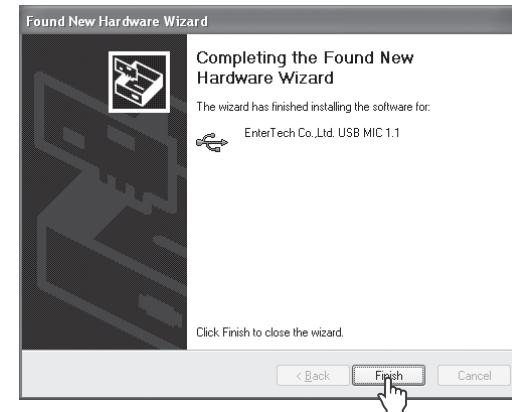




c) Click "Continue anyway" to proceed.



d) Click "Finish" to close the wizard.



3 INSTALLING THE ET ENCODER IN YOUR PC.

1. HOW TO USE INSTALL ET ENCODER

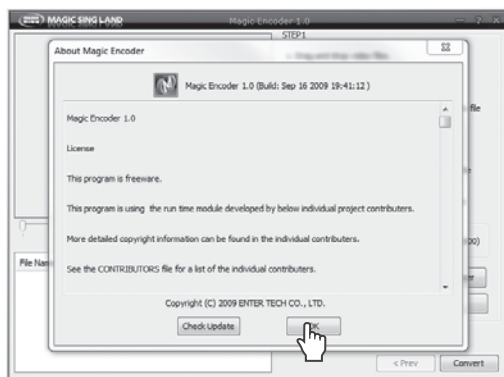
a) Insert the installation CD into your PC, and then you will see the POP-UP screen as shown below. Click 'Install Magic Encoder'.



b) Follow direction.



c) Now Installation is finished. Program will be shown.



ET MANAGER

1 GENERAL DESCRIPTION

A. Background Image

Converts image files you have in your PC into background images of MagicSing so that you can enjoy your personalized picture backgrounds on TV.

B. Recorded Song

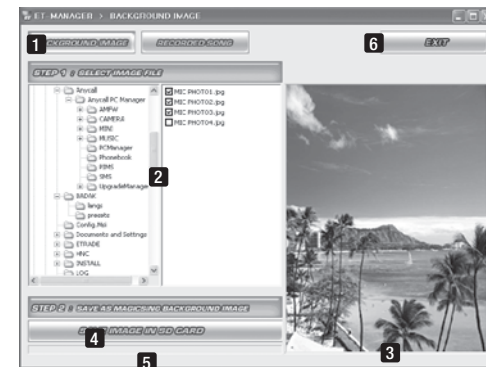
You can save your songs in the Recording Pack and you can convert and transmit the recorded songs into your PC as a "MP2" file (USB cable needed) to play those through PC or MP3 player.

Note : This function is available only when you use a Recording and SD card.

2 FUNCTION

A. Background Image

1) User Interface Layout



- 1 **BACKGROUND IMAGE** : Shows the "Background Image" window when you click on this button.
- 2 **IMAGE FILE SEARCH WINDOW** : Enables you to search folders in your PC and select the images from the chosen folders.
- 3 **IMAGE VIEWER** : Enables you to see your chosen images.
- 4 **SAVE IMAGE IN SD CARD** : Converts the selected image to a MagicSing background image file when you click on this button.
- 5 **CONVERT PROGRESS BAR** : Shows the length of the time in which your image files are being saved into an SD card.
- 6 **EXIT** : Allows you to exit from the "ET manager window" above.

Functions & Settings - Chapter.04

2) How to use

STEP1

- 1 Open the ET Manager window by double-clicking the ET Manager icon in your PC a "Background Image" screen will appear.
- 2 Search and select images from your files.(Choose from among the folders first, and then select an image by checking off the small box beside the file name.)
- 3 Click the file name to see the image on the Image Viewer.
- 4 Click the "SAVE IMAGE IN SD CARD" to save the selected images as background files.

STEP2

- 6 Search for your SD card and click it, and then click ok.
(You will see the progress bar moving which indicates that the files are being saved.)
- 7 To make sure that the images were saved in the SD card, open the SD card by clicking "My Computer", and then click "Removable Disk" (the SD card folder). You will see a folder entitled "BACKGROUND", click it and you will see your image files converted to EBJ.file format.

STEP3

- 8 Safely remove the SD card from your PC and insert it into the SD card slot located on the right side of the MagicSing main station.(IMPORTANT : THE MAIN STATION SHOULD BE TURNED OFF before inserting the .SD card)
- 9 Turn the main station on.
MagicSing will automatically display the images saved in the SD card on your TV.

B. Record

1) User Interface Layout.



Chapter.04 - Functions & Settings

- 1 **RECORDED SONG** : Click on the "RECORDED SONG" tab to work with Recorded Songs.
- 2 **SONG LIST** : When you click "LIST", it shows you the list of the song titles recorded in the recording pack. (if there's any)
- 3 **RECORDED SONG INFO** : Shows the song info. of a song recorded in the recording pack which is currently playing.
- 4 **SONG COUNTER BAR** : Time counter of the song currently playing.
- 5 **LIST** : Clicking on this tab shows you the song titles(if there's any) in the "Song list" window.
- 6 **PLAY / STOP** : Clicking on this "PLAY" tab plays the selected song (Select a song by checking off the box beside the song title.) Clicking on this "STOP" tab stops the song currently playing. (The "PLAY" button will be transformed into the "STOP" button as soon as the song starts playing.)
- 7 **NEXT** : Clicking on this tab plays the next song on the list. (Check off the box first beside the song title(s) you want to play next.)
- 8 **SAVE** : Clicking on this tab saves the selected songs in your PC as a MP2 file.
- 9 **DOWNLOAD PROGRESS BAR** : Shows the length of the recorded song currently playing.
- 10 **EXIT** : Allows you to exit from the "RECORDED SONG" window.

2) How to use

- 1 Insert a recording pack into the main station and turn on the power.
- 2 If there are recorded songs in the recording pack, just go to step 3.
If not, record your favorite songs first which you want to convert and save into your PC.
- 3 Connect the main station to a PC by USB cable.
- 4 Execute "ET MANAGER".
- 5 Click on the "RECORDED SONG" tab.
- 6 Click on the "LIST" tab to show you the song titles (if there's any) in the "Song List" window.
- 7 Select a song from the song list by checking off the box beside the song.
- 8 Click on the "PLAY / STOP" tab to hear the selected song on your PC.
- 9 Click on the "NEXT" tab to play the next song.
(Check off the box first beside the song title(s) you want to play next.)
- 10 Click on the "PLAY / STOP" tab to stop the song currently playing.
- 11 Click on the "SAVE" tab to save the selected song into your PC as a MP2 file.

ET ENCODER

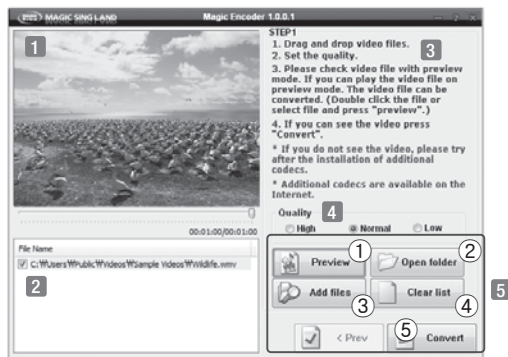
1 GENERAL DESCRIPTION

ET encoder convert video files.

There are many kinds of video files. MagicSing does not support all kinds of formats. So files need to be converted to play on MagicSing.

2 FUNCTION

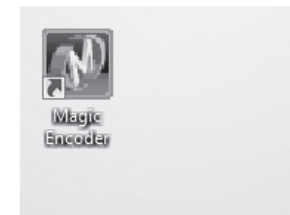
User Interface layout



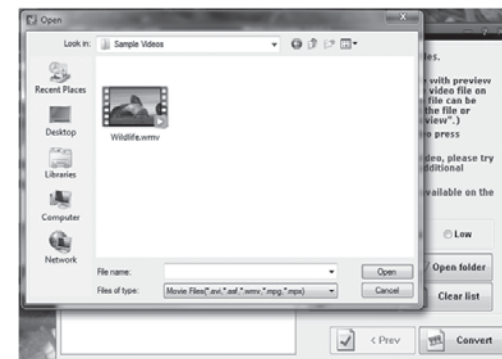
- 1 **Video display** : Shows Video preview.
- 2 **File list box** : Shows list of files.
(Drag and drop video files to this box)
- 3 **Instruction** : Shows step to convert video file.
- 4 **Quality** : Video quality selecting mode.
- 5 **Buttons** :
 - ① Preview : Play video preview.
 - ② Open folder : Search video files.
 - ③ Add Files : Search video files.
 - ④ Clear list : Clear list of files on File list box.
 - ⑤ Convert : To start converting.

3 HOW TO USE

1. Double-click ET Encoder icon to open the ET Encoder program on your PC.

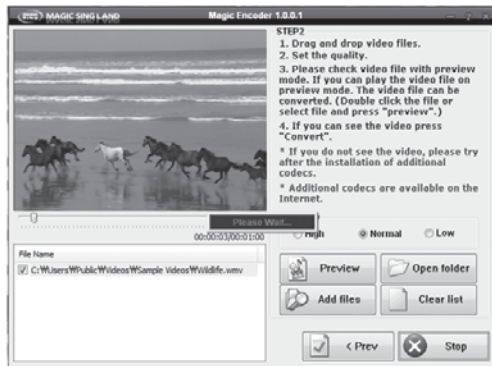


2. Click "Add file" button. Search and select files from your PC.



Functions & Settings - Chapter.04

3. First select a video file by double click. Then list will be appear on "File list box".

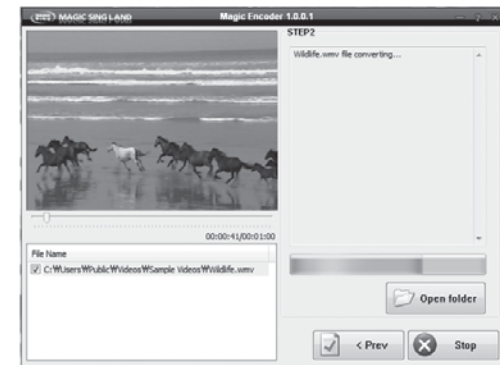


4. Click "Convert" button. Converting will start. Converting will take time depend on the size.

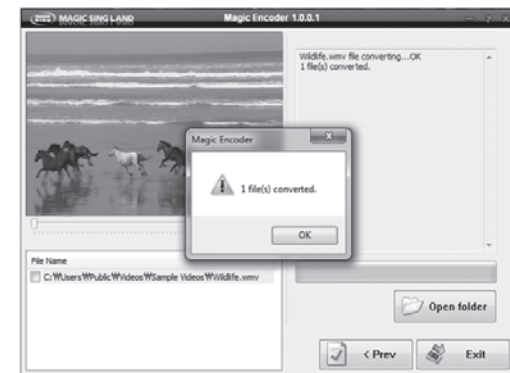


Chapter.04 - Functions & Settings

5. Progress bar will show during converting.



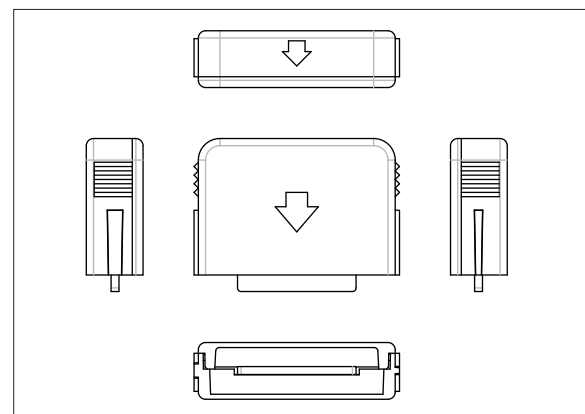
6. "1 file(s) converted" pop up message will appear after converting is finished.



7. Encoded file will be next to original file.
8. Drag and drop encoded file to SD card.
9. Safely remove SD card from your PC and insert it into the SD card slot located on the right side of MagicSing main station.
(IMPORTANT : THE MAIN STATION SHOULDK BE TURNED OFF before inserting the SD card)
10. Turn the main station on and go to movie mode. Enjoy video!

RECORDING PACK

You can record your own singing into the Recording Pack.



- **Turn off MagicSing** : MagicSing should be turned off first.
- Insert the Recording Pack into one of the slots in the back of the main station according to the direction of the arrow.
- Turn on the power of main station then select a song number and press [●] under the “record” section on the remote control.
- To stop the recording, press [●] again on the remote control or you can also press [▶/■].
- To play back the recorded songs, press [▶] under the “record” section on the remote control, and your recorded songs will be listed on the screen. Select a song using [▼/▲] then press [▶/■].
- To stop the playback, press [▶/■] again.
- To delete the recorded songs, press [RES] on the highlighted songs.

You cannot record your singing performance in the internal memory of main station while you are recording it in the recording pack.

You cannot record your singing performance in the middle of a song. If you press [●] in the middle of the song, the song stops, restarts, and then recording takes place.

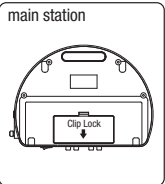
The Tempo, Jump and Key functions will not work when you are playing back the recorded songs.

ADDITIONAL SONG PACK

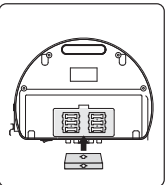
You can add more of your favorite songs to MagicSing.

How to Insert an Additional Song Pack

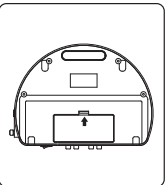
First, turn OFF the power. This is very important to turn off the main station before removing or inserting a song pack.



- Turn off the power of the main station
- Pull up the clip lock on the back cover of the main station, according to the direction of the arrow, then remove the back cover.

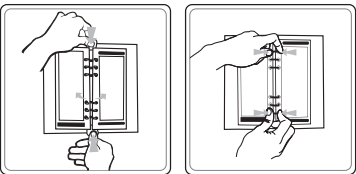


- Make sure the arrow on the song pack is pointing left when you insert the song pack.
(6 additional song packs can be inserted.)



- After the song pack is inserted, close the back cover.
- Turn on the power of main station.

SONGLIST INSERTION



Press down both the top and the bottom metal tabs of the binder simultaneously to open the binder rings.

Insert the new song list between the binder rings.

Close the binder rings.

PRECAUTION



Use the adaptor that comes with MagicSing only. There are many adaptors that are plug-compatible with MagicSing, but have different electrical specifications. These adaptors would work only for a short period of time but would very soon damage MagicSing.

USE THE RECOMMENDED ACCESSORIES ONLY (12V / 3A)



Do not drop MagicSing. Any external or internal damage due to dropping is not covered under warranty.



Do not insert or remove song packs while MagicSing is turned on.



Do not store MagicSing in direct sunlight, in a high temperature, or highly humid.



Do not use strong chemicals to clean MagicSing, as these chemicals may damage the unit.
Keep MagicSing away from pets and small children.



Do not press the LED / LCD part.



Never use a sharp object on the keypad.



In case MagicSing was stored in a high-temperature setting, allow sufficient time for it to cool down before using it.



Do not immerse MagicSing in water or splash water on it. Water damage is not covered by the warranty.



Do not disassemble the parts of the MagicSing. This will void the warranty.



Do not plug MagicSing in if it is wet. Immediately contact the service center. If any solid object or liquid gets inside MagicSing, unplug it and have it checked by our service center.

TROUBLESHOOTING

In case of problems, please check the following recommendations before contacting the service center.

If MagicSing doesn't power up

ET21KV MAIN STATION

Make sure the adaptor is correctly plugged into the power outlet. Check that the male plug is properly inserted into the female jack.

WIRELESS KARAOKE

Check if the battery type is AA. If the battery is low, MagicSing may not work properly.

If the user's voice cannot be heard

Press the VOL button and check the volume of the wireless karaoke.

If the TV does not show pictures or emit sound

Make sure all the AV connectors are properly connected according to the correct colors. Check if the TV is in the video mode.

If the video does not show properly (converting PAL or NSC mode)

To convert to PAL mode, turn off a wireless mic first. Press and hold button "8" on the wireless mic, and then press "POWER" button using another finger until the word "PAL" appears on the TV screen. (Do not release button "8" and the "POWER" button until the word "PAL" appears on the TV screen.) To convert to NTSC mode, turn off a wireless mic first. Press and hold button "9" on the wireless mic, and then press the "POWER" button using another finger until the word "NTSC" appears on the TV screen. (Do not release button "9" and the "POWER" button until the word "NTSC" appears on the TV screen.)

If there is any doubt about the product's performance

Turn off a wireless mic first, and then press and hold the "0" button on the wireless mic, and press the [POWER] button using another finger until the words "USER RESET" appear on the TV screen. (Do not release the "0" button and the [POWER] button until the words "USER RESET" appear on the TV screen)

When the wireless karaoke needs to be repaired, the main station should be included and returned to your nearest service center.

To contact our nearest service center in your area, please visit our website. "www.enter-tech.com"

FCC Information to User (For U.S. territory)

This equipment has been tested and found to comply with the limits for a Class A digital device, pursuant to part 15 of the FCC Rules.

These limits are designed to provide reasonable protection against harmful interference when the equipment is operated in a commercial environment. This equipment generates, uses, and can radiate radio frequency energy and, if not installed and used in accordance with the instruction manual, may cause harmful interference to radio communications. Operation of this equipment in a residential area is likely to cause harmful interference in which case the user will be required to correct the interference at his own expense.

Caution

Modifications not expressly approved by the party responsible for compliance could void the user's authority to operate the equipment.

This device complies with Part 15 of FCC Rules. Operation is subject to the following two conditions:
(1) the device may not cause interference, and
(2) the device must accept any interference, including interference that may cause undesired operation of this device.



VER.100

WWW.ENTER-TECH.COM

ENTER-TECH CO.,LTD.

Enter Bldg, 156-7, Ojeong-dong, Ojeong-gu, Bucheon-city, Kyunggi-do, 421-814, Korea
TEL : +82-32-673-1671 / +82-2-2605-0884 | FAX : +82-2-2691-5354 | E-MAIL : enter@enter-tech.com
MADE IN KOREA
VER.100