

Table of Contents

● ● DANGER	3
ISSUES THAT REQUIRE SPECIAL ATTENTION DURING INSTALLATION	3
ISSUES THAT REQUIRE SPECIAL ATTENTION DURING USE	3
● ● LOOKS AND FUNCTION	4
● ● SOFTWARE INSTALL IN WIN98 OR WIN98SE	5
● ● HARDWARE INSTALLATION	8
INSTALLING CAMERA	8
INSTALLING DRIVER	8
INSTALLING THE DRIVER IN WINDOWS 2000	12
● PLUS CAM MAIN SOFTWARE	13
● ● VIDEOOFFICE	19
VIDEO AND AUDIO SETTINGS	19
TOOLBAR	20
VIDEOOFFICE CONFIGURATION OPTIONS .오류! 책갈피가 정의되어 있지 않습니다.21	20
REAL TIME MPEG CAPTURING	24
● ● PC SNOOP SE	27
PC SNOOP SCREEN SAVER SE	27
WATCHDOG MODE	29
PC SNOOP BROWSER SE	30
● ● HOW TO USE NETMEETING	34
● ● PICTUREDRAW2000	37
MAIN SCREEN	37
TOOL BAR	38
MENUS	40
● ● SPECIFICATION	44
● ● SYSTEM REQUIREMENTS	44

Thank you for choosing PLUS CAM.

Please read all the instructions carefully. It will help you to be an expert of PLUS CAM USB CAMERA. For more detailed information, refer to the Adobe Acrobat 4.0 in PLUS CAM program CD.

We are promising that all software programs and manuals of PLUS CAM will be upgraded continuously by its website and the manufacturer of the bundle software. If you have any questions or problems using PLUS CAM, please email us so that we could solve your problems.

Once again, thank you for your support and hope you enjoy using PLUS CAM.

<http://www.plusonnet.com>

<http://www.darin.com>

people-future@hanmail.net (for Paint Draw 2000)

DANGER

Issues that require special attention during installation

1. Avoid installing near heating equipment, humidified area, and direct sunlight.
Most suitable operating conditions : 5 ~ 35°C, 30 ~ 80% RH
2. Do not install in dusty area, and where water (rainwater) could bounce up.
3. Put away from magnets or sound equipment such as speakers.
Those could negatively affect image quality or sound transmission.
4. Do not install at unstable place. Dropping or impact the product might damage or render the product in operational.

Issues that require special attention during use

The following safety condition issues are to prevent any damage due to mistreatment of the usage and also extend longer product life.
Please read the issues carefully and use the product according to these recommendations.

1. Take the USB cable out when it is not in use for a long time.
 2. Clean the camera and lens with soft fabric.
Do not touch or wipe out the lens with bare hands.
Do not use spray water or the inflammables like benzene or thinner to clean.
 3. Do not bend or pull the USB cables strongly.
 4. Do not leave coffee or drinks near to the camera.
 5. Do not disassemble, repair, or rebuild the unit.
Contact A/S center or the dealer for repairs.
 6. For more detailed information, please visit PL US CAM Internet site.
<http://www.phisonintl.com>.
- Program upgrade or software installation could be downloaded from Internet.
Q & A section could be used to get answers or solutions for any problems with the product.

● Looks and function



Software Install In Win98 or Win98SE

Driver and software should be installed before you connect the camera to your computer. Insert the included CD before hooking up the camera to PC and installation window will pop up your desktop. Press a button of the driver and software you want to install in the pop-up window and follow the steps that is shown on the desktop.

If you've already connected the USB Camera before installing the CD, please follow the "Hardware Installation" procedures in page 8P.

1. Installation of the driver and software

This procedure allows you to install the driver to configure the camera in your computer and you can also install the application software you need to enjoy the PLUS CAM world. It will start from CD-ROM drive of your computer that contains Software CD.

Basically, there are three ways you can install the driver. You can choose any way you wish but the easiest way is '1.1 Installation in Auto-Run.'

1.1 Installation in Auto-run.



- Insert the software CD into the CD-ROM drive of your computer. (The installation window will pop into the desktop).
- Install the PLUS CAM driver by pressing the button of 'PLUS ONE PLUS CAM Driver'
- The driver will be installed automatically by running Auto-Run as soon as you insert the CD into the CD-ROM drive of your computer.
- Install the PLUS ONE PLUS CAM Application by pressing the button and following the steps your system shows.

5

- In the same way, you can install another software you wish (PC SnOp SE, PictureDraw 2000, Netmeeting 3.01, Acrobat Reader4.0). If you already have these applications or if you don't want to install these applications, press the EXIT and get out of the installation window.
- Connect the PLUS CAM camera to your computer and your system will configure the camera automatically. (Occasionally, your computer shows Dialogue Box asking for the directory of the file folder. In that case, specify the 'C:\PLUS ONE USB Camera' by using Browse.)

- Please refer to "Hardware Installation (page - 8P)" to get help for connecting the Camera to your computer.

8) Enjoy the PLUS CAM World.



During installation, the button of the software in the window will be checked if the software had been installed. It will also be checked if you already had the software in your system.

1.2 Installation using Windows Explorer.

- 1) Insert the software CD into the CD-ROM and select the CD-ROM drive in Windows Explorer.
- 2) Find the SETUP.EXE file and start the installation by double-clicking the file.
- 3) The next steps is the same as explained in '1.1 Installation with Auto-run'. As it were, you can see the installation window on the desktop and proceed to Step2 in the 1.1 Installation with Auto-run

1.3 Installation with run

- 1) Click the Start button and click Run
- 2) In the open box, enter the path and file name of the setup file. That is, type the letter of the CD-ROM drive, followed by a colon(:), a backslash(\), and the word 'setup'. (For example D: \SETUP.EXE)

6

3) Click OK.

The installation window will pop into the desktop and proceed to Step2 in the 1.1 installation with Auto-run.

- Basically, PLUS ONE PLUS CAM software CD was made to go down to Auto-run as soon as you insert the CD into the CD-ROM driver. In case Auto run was not available in your system, install the driver and software by following the instruction of 1.2 installation using Windows Explorer and 1.3 installation with Run

1.4 Explanation of the menu in installation window

You can select the programs you want to install in the installation window if setup is run.

- PLUS ONE PLUS CAM Driver : Driver for the PLUS ONE PLUS CAM (Hardware) ; should be installed.
- PLUS ONE PLUS CAM Application : Main software for making use of PLUS CAM ; should be installed
- VideoOffice : Software for capturing the video clips, taking snapshots, and MPEG compression.
- PC SnOp SE : Software for using your computer as a personal receptionist or a watchdog.
- PaintDraw 2000 : Image-editing software.
- NetMeeting : MS software for video conference.

In addition to this, the DirectX and Manual are also included in the CD. As soon as you finish the installation of the software you've selected, the icon and folder related to PLUS CAM is made automatically in your system and related information will be written in the registry.

● Hardware Installation

Installing camera

The first step you have to take for using the camera is to connect it to your computer. The PLUS CAM uses the USB slot, which makes the installation a lot easier. Plug the USB cable of the camera to the USB slot as shown in Figure 1.



Figure 1. The USB slot

When you use the Macintosh, connect the camera to the USB port as shown above.

Note : The Driver Installation procedure described below could be applied if the camera is installed before Software Installation or upgrading on PC even though Software Installation has been done first. If it is asking for the file location, specify 'C:\PLUS ONE USB Camera'.

Installing driver

If you connect the USB cable to the computer prior to installing the driver and software, you will see "New Hardware Found" message and then "Add New Hardware Wizard" windows as below.



The PLUS CAM needs two kinds of device driver to operate properly. One is "USB Device" as Universal Serial Bus Controller and the other is "ARK 8500 USB Camera- Ver 1.29" as Imaging Device.

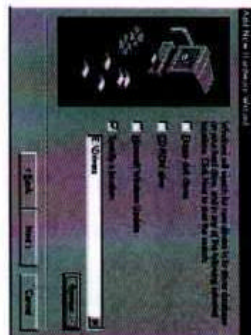
If you Click **Next>** on the above windows to install the driver for the "USB Device", the windows ask for the location of driver. Then insert PLUS ONE USB Camera driver CD in your CD-ROM and select "Search for the best driver for your device".



All driver files needed for the camera are in Driver folder of the driver CD (ex, D:\driver). So click Browse button to specify this location. And click **NEXT>**.



9



Your system will find the driver files for the "ARK 8500 USB Camera- Ver 1.29" as below.



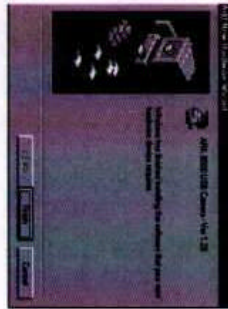
Click **Next>** The Windows copy all driver files needed and complete the driver installation as below. At this moment, if the installation was completed well, the LED lamp on the camera will be turned on.

Note: During copying driver files, the Windows may ask some system files as below. Then insert Windows 98 CD and specify the location



Click **Finish** to complete the installation as below.

10



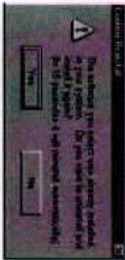
Uninstall the Software.

If you'd like to remove the PLUS CAM software from your computer, you should run Uninstall Program in the PLUS ONE USB Camera. Click the Start button, Programs, PLUS ONE USB Camera and then run the uninstall PLUS ONE PLUS CAM (Start -> Programs -> PLUS ONE USB Camera -> Uninstall PLUS ONE PLUS CAM). You can get rid of the driver and software safely by following the above steps. I



Reinstall the software

You should reinstall the driver and software if you come across the functional disorder or if there are serious functional errors while you are using PLUS CAM. In those cases, you should insert the installation CD into your CD-ROM driver and then installation window will appear on the screen with the following window. Press OK and then, PLUS CAM driver and software will be removed and you can start the installation from the initial installation window.



Installing the driver in Windows 2000

11

Note: The "PLUS ONE PLUS CAM Driver" on setup menu does not work in Windows 2000. Please follow these procedures to install the driver in Windows 2000.
If you need more information or help to install the driver in Windows 2000, please refer to our Homepage(<http://www.plusoneintl.com>)

- Connect USB cable to the computer.
- "Found New Hardware Wizard" window will show up.
- Specify driver files in the Drivers folder of CD (D:\drivers)
- Your system will copy all driver files.
- Click Finish to complete the "Found New Hardware Wizard".
- Then install other applications you want via Setup menu.

PLUS CAM 1.1 – Main Software

The PLUS C

AMI.1 is the main software for enjoying the PLUS CAM World. You can capture a video clips, take snapshots, and send them via E-mail. It is also linked to NetMeeting(for video conference) PictureDraw 2000(Image editing program) and PC SnOp SE(for using PC as a personal receptionist or a watchdog).

From now on, let's learn how to use the PLUS CAM.

On running the Couple, you can find the following control window with the video window.

12

- Open** Opens an image
- Image Scan** Shows all the thumbnail images in Database folder.
- Save to Clipboard** Copies an image to a clipboard.
- Print** Prints an image.
- Input comments** Write down here on the image.
- Fonts and Color** Defines fonts and color of the fonts.
- Slide Show** Arranges images with frame effects on slide.
- Load Images** Loads an image and shows effects on the image frame.
- Save File** Saves changes made to a slide file.
- Open File** Opens an existing slide file.
- Effect** Shows frame effects.
- Effect Setup** Shows setup frame effects.
- Insert Effect** Applies a certain effect that you choose in an effects box on the selected frame.
- Time Control** "Effect time" means time for changing the effects, and "frame" means the interval of frames.
Go one frame forward or backward.

● Specification

Description	Specifications
Optical System	1/3" CMOS
Active pixels	640(H) * 480(V)
Lens mount	EFL 4.3mm, F 2.0
Illumination	Slux (mm)
MIC	NONE
Output signal	USB format
Output resolution	30 fps at CIF 7~8 fps at VGA
Signal process	DSP
White balance	Automatic
Power Supply	DC 5V via USB Cable
Power consumption	Max 1.2W
Dimensions	62(W) * 140(H) * 32 (D)
Weight	160g(Included Stand, USB Cable)

● System Requirements

Description	Specifications
CPU	Pentium 133MHz (MMX Recommended)
Cable Port	USB Port
Memory	32MB (64MB Recommended)
OS	Windows98, Window2000, MAC
Monitor Resolution	800 * 600 (1024*768 Recommended)
Hard Disk	100MB or more
Installed Driver	CD - ROM
Required systems for Audio & Video conference	LND-Card or Modem (33.6Kbps or higher speed) Sound Card compatible with Sound Blaster, Speaker

* Upgrade software through our website at www.plusonint.com.

If the product has any problems, please check the list of most common solutions below.

Problem	Solution
- Slowed transmitting speed	<ul style="list-style-type: none"> - Problem caused by declined transmitting speed of the current communication line - Close other open programs which may slow down the system.
- The screen is dark	<ul style="list-style-type: none"> - The image brightness and contrast depends on ambient light conditions. Move the object closer to light source. - Adjust counter light correction, brightness, or white balance in the adjustment panel.
- Image on the screen is not sharp	<ul style="list-style-type: none"> - Adjust the focus of camera - Check the surface of lens.
- Captured still images have excessive low quality and noise.	<ul style="list-style-type: none"> - It could happen when the capture rate is too fast. Adjust the rate in the Camera Adjustment Panel. - The most suitable frame speed for capturing images : 5 frames
- Bundle software is not functioning.	<ul style="list-style-type: none"> - Check the current O/S type. The product should be installed in Windows98, not in Windows95 or Windows NT.
- Sound from the speaker is too noisy during the video conference. The noise prevents you from hearing other sounds and remote party voice.	<ul style="list-style-type: none"> - Noise could be generated by the specific characteristics of the Sound card and the Speaker. Check with your PC vendor or dealer. - Adjust the direction of the speakers and the mic. - Decrease the volume on the speakers. - Use Audio control to adjust the mic and speakers level settings.
- PC shuts down abnormally.	<ul style="list-style-type: none"> - Check connection of USB cables. (Do not take out cables without terminating communication program!) If the cables are taken out, terminate the program first, connect cables, and restart the program. Conflicts between several running software applications could cause this problem. Reboot PC try again.