

User's Manual

Enjoy
MP3/AAC/WMA Player



© CVC Networks Co., Ltd.



CONTENTS

1. Check point before you use	1
1) Including	
2) Computer Capacity	
2. Specification of the CAP (ICP-2000)	2
3. Overview of the outer parts of the CAP (ICP-2000)	3
4. Installing Software	4
5. How to connect CAP to your PC	5
6. How to use CAP Station, a Manager S/W	5
7. Operating Instruction for CAP (ICP-2000)	7
1) Power On/Off	
2) Music files	
■ How to playback Music files (MP3/AAC/WMA)	
■ Selecting a Music	
■ Repeat Play	
3) Voice files	
■ Voice Recording	
■ Playback the Voice Recording Files	
4) Deleting Music or Voice Recording Files	
8. Troubleshooting	9
9. Customer Service	10
10. Warranty	10

MP3/AAC/WMA Player!

Users Guide for CAP (ICP-2000)

Thank you for your purchasing CAP. Now you can enjoy multi format music files from a one player! This "Users guide" introduces CAP (ICP-2000)'s features and shows you how to use this product most properly. Before you operate this unit, please read these instructions carefully and keep them for future reference. If you lost this manual, you can download it from our homepage www.cvon.co.kr.

1. Check Point before you use

1) Including

Please check to make sure that you have the following items before you use this player.

Contact your dealer if any of these items is missing. Your dealer will provide the optional accessories depending on your selection of purchase.



PLAYER



USER'S MANUAL



USB CABLE



HEADPHONE



INSTALLATION S/W CD



2*AAA BATTERIES



NECK STRAP



2) Computer Capacity

The minimum system requirements for your CAP (ICP-2000) are:

- MICROSOFT WINDOWS 98/WINDOWS 98 SECOND EDITION/ WINDOWS 2000
- PENTIUM 166MHZ CPU
- IBM PC/AT COMPATIBLE MACHINE WITH USB CABLE
- CD-ROM DRIVE
- 10MB FREE HDD SPACE
- 32MB RAM OR HIGHER

<Note> For PC interface, you have to use the USB cable which comes with your purchase.

2. Specification of CAP (ICP 2000)

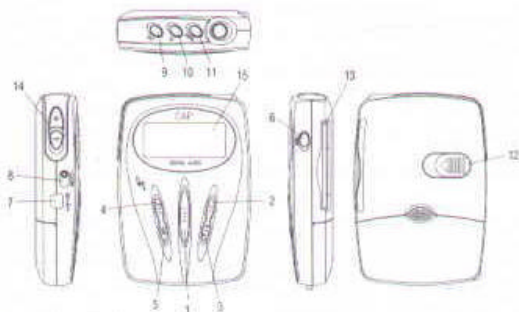
File Format	MP3/AAC/WMA (without DRM)
Dimension (W*H*D)	58*63*20(mm)
Weight	55(g)
Storage	Built-in memory 32Mbyte (extension 96Mbyte) External memory 16/32Mbyte (Smart Media Card)
PC Interface	USB (Universal Serial Bus) cable
Easy download software	Operated in Windows 98/Second edition 98/2000 Show files and manage tracks inside the player
Equalizer	5 band EQ for Audio Mania
EQ Mode	Flat/ Rock/ Latin/ Dance/ Jazz
Voice Recording	ADPCM for 2 hours (32MB)
Decode	MP3 ~ 320Kbps, AAC ~ 256Kbps, WMA ~ 196Kbps
Graphic LCD	Display playing time/ Condition of batteries / Track No / Song file name / Condition of memory
File Management method	FAT or SFSDC compatible
Batteries	DC + 1.5V x 2 (AAA) Ultra Alkaline
Playing time	12 hours long
Frequency Response(L/R)	20~20KHz ± 3 dB
T.H.D (L/R)	Under 0.1%
S/N (L/R)	More than 80dB
Current Consumption	85 mA

■ By Using the DSP, "CAP" can decode all kinds of internet contents file formats and be easily upgraded.

■ Above specifications are subject to change without any notice.

MP3/AAC/WMA Player!

3. Overview of the outer parts of the CAP (ICP-2000)

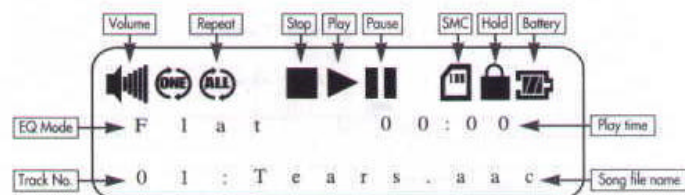


< Button description >

- | | | | | |
|-----------|-----------------|--------------|------------|-------------------|
| 1) PLAY | 2) FF | 3) REW | 4) REP | 5) STOP |
| 6) MENU | 7) USB Slot | 8) HOLD | 9) REC | 10) EQ(Equalizer) |
| 11) ERASE | 12) SMC ejector | 13) SMC Slot | 14) Volume | 15) LCD |

<Note> When you download the music, please clear the rubber cover of the USB and replace it after you finish download to protect the player from dust and humidity.

<LCD display>



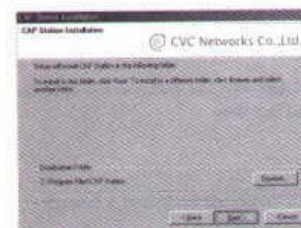
<Note> Battery state has three levels: Full /Middle /Low.



4. Installing Software

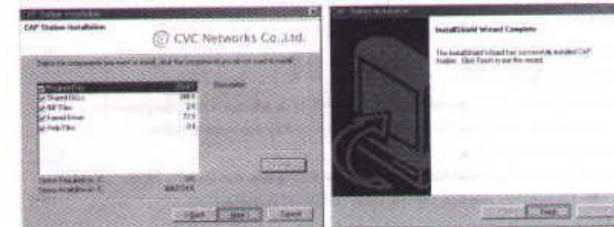


1) After you insert an installation software CD into a CD-ROM drive of your PC, if the installing software doesn't be displayed automatically, please open "My Computer" from your desktop window by double clicking. You can find the setup program by double clicking the "CD-ROM drive" and start the installation by double clicking the "Capsetup.exe". Follow the instructions on your screen to continue through the setup process by clicking the "Next" button.



2) If you want to choose another directory to set up, click the "Browse" button and select the directory you want and click the "Next" button. The default setup path is "C:\Program Files\CAP Station".

3) Click the "Next" button to follow the installing process and click the "Finish" button.



MP3/AAC/WMA Player!

5. How to connect CAP to your PC

To download the music files from your PC, the player must be connected to your computer by the USB cable which comes with your purchase.

- Plug in the one end of cable to a USB slot of your PC.
- Connect the other end of cable to your player and turn the power on by pressing the "PLAY" button. You can connect them after you turn the power on.
- "Connected to PC" will display on the LCD indicator.

<Note> Reconnecting to your PC

When the file directory is not displayed properly on the PC or you get the message "Player is not connected", you can reconnect by choosing the [Refresh] button (●) from your manager S/W.

6. How to use CAP Station, a Manager S/W

1) Starting CAP Station

After connecting the player with PC, start the "CAP Station" from your desktop window by double clicking or by selecting this program from the Windows Start Menu.

2) Download

■ Drag and Drop

- Directory selection → (2) File selection → (3) Memory selection (Internal or External)
- (4) Drag and Drop the selected file at the player list part

■ Using Download button (▲)

- Directory selection → (2) File selection → (3) Memory selection (Internal or External)
- (4) Press the Download button (▼)

3) Upload

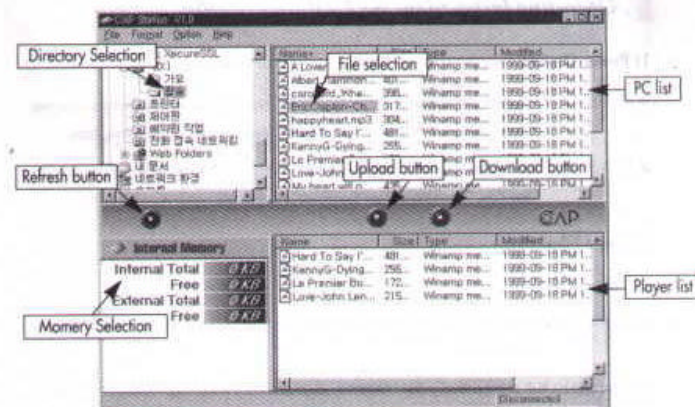
■ Drag and Drop

- Memory selection (Internal or External) → (2) File selection from your player list
- (3) Drag and Drop the selected file at the directory you want to upload

■ Using upload button (▲)

- Memory selection (Internal or External) → (2) File selection from the player list part
- (3) Directory selection → (4) Press the Upload button (▲)

<Notes> For copyright protection, some music files (MP3/AAC/WMA) cannot be uploaded.



4) Delete File(s)

- Select the file you want to delete → (2) Click the right button of mouse
- (3) Click the "Delete File(s)" button

5) Format

■ Internal Memory Format

- Select the directory C:\Program\CAP Station → (2) Click the [Format] from the Menu bar
- (3) Click the [Format Internal Memory]
- (4) "Do you really want to format Internal Memory?" then click the "Yes" button.

■ External Memory Format

- Click the [Format] from the Menu bar → (2) Click the [Format external Memory]
- (3) "Do you really want to format External Memory?" then click the "Yes" button.

<Notes> If you format without selecting the directory C:\Program\CAP Station, you can't play anything even though you download music files successfully.

7. Operating Instructions for CAP (ICP-2000)

1) Power On/Off

- POWER ON : To power the player on, press the "PLAY" button for a second and you can see "Enjoy CAP! Multi Format Player" then the memory state for the Music Base.
- POWER OFF : To turn the player off, press the "STOP" button for four seconds and you can see "See You.." message before the player is turned off.

2) Music Files

- How to playback Music files.

- (1) POWER ON : Press the "PLAY" button and the music file from the base memory will be played automatically.
- (2) CHANGING THE MENU : Press the "STOP" button first and press the "MENU" button to change the menu from "Music Base" to "Voice Base", "Music SMC" or "Voice SMC" then you can see the each menu's memory state.

<Note1> Base means internal memory and SMC(Smart Media Card) is external memory.

<Note 2> You can see the "bpm" state if you press the MENU button during the music playing.

- (3) PLAY : Press the "PLAY" button to play the music after you select file you want to enjoy by pressing the "FF" or "REW". (FF for the next track REW for the former track). You can see the song file name is scrolling, which shows the song name and file format (MP3/AAC/WMA).
- (4) PAUSE : Press the "PLAY" button during the music playing and repress the "PLAY" button to play the music again from where you pause.
- (5) STOP : Press the "STOP" button during the music playing and if you press the "PLAY" button, the music will start from the beginning of the music you stopped.
- (6) CHANGING EQ MODE : Press the "EQ" button until you find the EQ mode you want (Flat/ Rock/ Latin/ Dance/ Jazz). You can change the EQ mode during the music playing.

- Selecting a Music

Press the "FF" or "REW" button during playing or before playing.

- Repeat Play

Press the "REP" button and select Normal/ One/ All ("All" is selected automatically when you turn on the power).

- One: Replays a selected single song only
- All: Replays all the songs

3) Voice Files

- Voice Recording

(1) SELECTING THE MENU

- Selecting the Voice Base or Voice SMC by pressing the "MENU" button.
- To prevent the user from starting record accidentally, any Voice Menu must be selected first.

(2) RECORDING : Press the "REC" button to start recording. You can see "Voice REC" on the LCD indicator.

(3) STOP : Press the "STOP" button to finish voice recording.

- When you record another voice file, the player will designate each recording in the following order

: Adp - 001, Adp - 002

<Note> With the internal memory of 32M Bytes, you can record up to about 2 hours.

- Playback the Voice Recording File

(1) SELECTING THE MENU

- Change to Voice Base or Voice SMC menu by pressing the "MENU" button and you can see the free memory.

(2) PLAY : Press the "PLAY" button to play voice files.

(3) STOP : Press the "STOP" button to stop playing.

(4) SELECTING THE FILE : Press the "FF" or "REW" button to select the voice file you want.

MP3/AAC/WMA Player!

4) Deleting Music or Voice Recording Files

- (1) SELECTING THE FILE : Select a file you want to delete by pressing the "FF" or "REW" button.
- (2) ERASE : Press the "ERASE" button and you can see "Erase Yes?" then press the "ERASE" button again.
- (3) CANCEL : Press any other button to cancel the erasing order.
- (4) CONFIRM : If you succeed in erasing, you can see the message "Erasing".

<Notes> Be careful because you cannot recover a file once deleted.

8. Troubleshooting

Careful care and maintenance of this product is needed to optimize the performance of your player.

- A serious damage can occur to this product when dropped or banged.
- Do not leave this player in the car parked in direct sunlight.
- Do not operate or store this player in places that are extremely hot, cold, humid or dusty.
- This product will not operate properly when it is connected to a USB slot sharing device.

You can obtain technical assistance if some problems you encounter when using this unit cannot be identified and solved by the User's Manual. Contact us at technical@cvcn.co.kr website.

Before you ask for the technical assistance, please check and follow the Trouble Shooting as below.

1) NO POWER ON

- 1) Check to see if the battery is placed properly.
- 2) Check to see if the battery is all used up.
- 3) Check to see if the battery is placed upside down.

2) UNABLE TO DOWNLOAD DATA

- 1) Check the USB cable is properly connected to you PC and the CAP ICP-2000.
- 2) Restart the CAP station program.
- 3) Power the CAP off and then power it on again.
- 4) Check if the battery is low.



3) NO SOUND OR INTERMITTENT PLAY

Format the memory and download the music files (MP3/AAC/WMA) all over again.

4) UNABLE TO VOICE RECORD

Format the memory and record the voice again.

5) MEMORY CARD CAN NOT BE INSERTED

Check the memory type. The 5V memory card cannot be used in the player.

6) THE FILE ON THE MEMORY CARD IS NOT BEING RECOGNIZED

Using the CAP Station, format the Memory card and copy files again.

7) BUTTONS DON'T WORK

Check the "HOLD" button or battery is low.

9. Customer Service

If you experience any troubles with your CAP, Please contact us by e-mail at the following.

E-mail : customer@cvcn.co.kr

If you need software upgrade or further information regarding the CAP, please visit our website below.

Website : <http://www.cvcn.co.kr>

10. Warranty

< One year warranty>

"MULTI FORMAT DIGITAL AUDIO PLAYER" LIMITED WARRANTY TO ORIGINAL PURCHASER"

- This CAP (ICP-2000) brand product, as configured and distributed by CVC Networks Co., Ltd (CVC). And delivered new, in the original carton to the original consumer purchase, is warranted by CVC against manufacturing defects in materials and workmanship for following limited warranty period: One (1) Year
- This limited warranty begins on the original date of purchase, and does not include transportation, installation, removal, and reinstallation.

MP3/AAC/WMA Player!

- CVC shall not be liable for loss of revenue or profits, or any other special, incidental or consequential damages caused by the use, misuse or inability to use this product, regardless of the legal theory on which the claim is based, and even if CVC has been advised of the possibility of such damages.

< Exceptional Case >

In some following cases, you can get the free of charge service during the warranty term.

- Damage which occurs in shipment
- Applications and uses for which this product was not intended
- Failures or problems which are caused by products or equipment not supplied by CVC
- Accidents, misuse, abuse, neglect, misapplication, fire, water, lighting or other acts of nature
- Incorrect electrical line voltage, fluctuations or surges
- Damage caused by improper or faulty installation; improper connection with any peripheral
- Product alteration or modification; improper or unauthorized repair; cosmetic damage or exterior finish; product with altered serial numbers
- Failure to follow operating instruction, customer adjustment, maintenance and environmental instructions that are covered and prescribed in the instruction book
- Use of non-CVC or unauthorized parts, supplies, accessories or equipment that damage this product or result in service problems
- Failures or problems; failures or problems due to incompatibility with other equipment.

< The Process of asking Service >

Please contact the dealer you purchased the product first and ask the service you want. You should get the service from the service center which CVC designate and approved. You can get the information of service center from the dealer.

< Dealer' Contact Point >

<Note> Non-CVC manufacturers suppliers, or publishers may provide their own warranties.

Thank you for purchasing CAP again and please visit our website
www.cvcn.co.kr if you need more information.

FCC INFORMATION

This equipment has been tested and found to comply with the limits for a Class B digital device, pursuant to part 15 of FCC Rules. These limits are designed to provide reasonable protection against harmful interference in a residential installation. This equipment generates, uses and can radiate radio frequency energy and, if not installed and used in accordance with the instructions, may cause harmful interference to radio communications. However, there is no guarantee that interference will not occur in a particular installation. If this equipment does cause harmful interference to radio or television reception, which can be determined by turning the equipment off and on, the user is encouraged to try to correct the interference by one more of the following measures:

- Reorient or relocate the receiving antenna.
- Increase the separation between the equipment and receiver.
- Connect the equipment into an outlet on a circuit different from that to which the receiver is connected.
- Consult the dealer or an experienced radio/TV technician for help.

Warning

Changes or modifications not expressly approved by the manufacturer could void the user's authority to operate the equipment.