

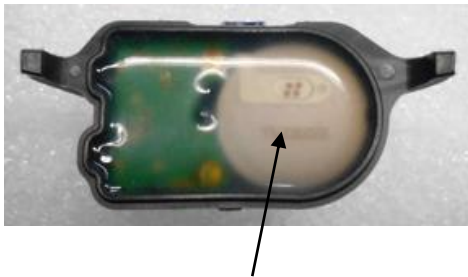
10. Outline View

Top view of Transmitter

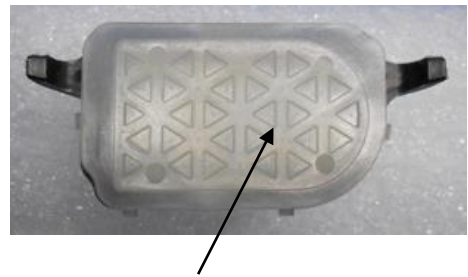


or

Bottom view of Transmitter



Resin sealing structure



or

Resin sealing + Structure with a cover

Fig. 12

Front view of Transmitter



or



Rear view of Transmitter



or



Right side view of Transmitter



or



Left side view of Transmitter



or



Fig. 13

NOTE

The only difference between the left and right transmitters is that they have a cover.