

OPERATING INSTRUCTIONS

BEDIENUNGSANLEITUNG

MODE D' EMPLOI

EV-128MRS

MEMORY AUDIO PLAYER

REPRODUCTOR DE AUDIO CON

MEMORIA

OWNER' S RECORD

For your convenience, record the model number and the serial number (you will find them in the battery compartment of your set) in the space provided below. Please refer them when you contact your **Evaluation** dealer in case of difficulty.

FCC NOTICE

THIS DEVICE COMPLIES WITH PART 15 OF THE FCC RULES.
OPERATION IS SUBJECT TO THE FOLLOWING TWO CONDITION:
(1) THIS DEVICE MAY NOT CAUSE HARMFUL INTERFERENCE, AND
(2) THIS DEVICE MUST ACCEPT ANY INTERFERENCE RECEIVED,
INCLUDING INTERFERENCE THAT MAY CAUSE UNDERSIRED
OPERATION.

This equipment has been tested and found to comply with the limits for a Class B digital device, pursuant to part 15 of the FCC Rules. These limits are designed to provide reasonable protection against harmful interference in a residential installation. This equipment generates, uses and can radiate radio frequency energy and, if not installed and used in accordance with the instructions, may cause harmful interference to radio communication. However, there is no guarantee that interference will not occur in a particular installation. If this equipment does cause harmful interference to radio or television reception, which can be determined by turning the equipment off and on, the user is encouraged to try to correct the interference by one or more of the following measures :

- Reorient or relocate the receiving antenna.
- Increase the separation between the equipment and receiver.
- Connect the equipment into an outlet on a circuit different from that to which the receiver is connected.
- Consult the dealer or an experienced radio/TV technician for help.

NOTE : The manufacturer is not responsible for any radio or TV interference caused by unauthorized modifications to this equipment. Such modifications could void the user' s authority to operate the equipment.

NOTICE TO USERS

WARNING

TO REDUCE THE RISK OF FIRE OR ELECTRIC SHOCK, DO NOT EXPOSE THIS APPLIANCE TO RAIN OR MOISTURE.

Copyright Notices

Under the copyright laws, neither the documentation nor the software for this product may be copied, photocopied, reproduced, translated, or reduced to any electronic medium or machine-readable form, in whole or in part, without the prior written consent of **Evolution Technologies, Inc..**

Copyright ©2002 **Evolution Technologies, Inc.** All rights reserved.

- Microsoft, Windows, Windows Media and the Windows Logo are trademarks or registered trademarks of Microsoft Corporation.
- Intel and Pentium are registered trademarks of Intel Corporation.
- MultiMediaCard is a trademark of Infineon Technologies AG.
- The names of systems and products appearing in this manual may be registered trademarks or trademarks of their respective companies or organizations. In this manual, the TM or ®mark is not always explicitly described.



Disclaimer

Evolution Technologies, Inc. will not be responsible for any loss or damage of music files due to their transfer to the EV-128MRS player.

About the supplied software

- For using the supplied Audio Manager software, follow the terms of License Agreement that you can view during the installation of the software.
- You need software upgrades in order to support emerging new compression methods other than WMA and MP3. Some software upgrades may not be free of charge.
- For FAQs and downloading the new software for the EV-128MRS player, refer to <http://www.nowevolution.com>

Warning

You must be aware that distributing copies of WMA- or MP3-format music files to any other person without permission is against the copyright laws. You can use the software in the supplied installation CD-ROM for personal use only.

COPYRIGHT

Please check the laws on copyright relating to **recordings from discs or external tapes** for country in which the machine is being used.

PRECAUTIONS

The following are precautions that you should always keep in mind. Any violation of one or more of the following precautions may cause damage and will void the warranty.

To maintain good performance

- Avoid exposure to heat, moisture and static electricity.
- Do not use the player in places that are extremely hot, cold, dusty, or humid.
- In particular, do not keep the player in a high humidity area such as a bathroom, near a heater or in an area exposed to direct sunlight *e.g., inside a parked car).
- When you carry the battery in your pocket, do not have other metal objects such as coins or keys in the same pocket.

Friction caused by the metal and the battery rubbing together may cause a fire.

- Make sure that pins or other foreign objects do not get inside the player.

Caution of impact

Do not drop the player or allow any sharp impact. This may cause serious damage to the player.

Note on listening with the headphones

- Listening to the player at full poser for extended periods of time can result in hearing damage.
- Do not wear the headphones while driving or cycling. This may create a traffic hazard.
- You should use extreme caution or temporarily discontinue use in potentially hazardous situations, such as walking, jogging, etc.
- Wear them properly; L is left and R is right.
- The in-ear type headphones should be worn with the longer cord behind your neck.

To clean the cabinet

Do not use chemicals to clean the cabinet. This may change the color of the player or damage the surface. Use a soft towel to clean the surface of the player.

TABLE OF CONTENTS

Chapter 1. Introduction	7
Main features	7
Accessories	7
System requirements	8
About this manual	9
Viewing Help	9
Restrictions on transferring music files and using MultimediaCards	10
Chapter 2. Preparation	11
1. Installing the Audio Manager and driver software	11
Uninstalling the Audio Manager and driver software	14
2. Preparing the EV-128MRS player	15
Charging the battery	15
Inserting the battery	15
Battery indicator	16
Installing a MultiMediaCard	16
Formatting a MultiMediaCard	17
3. Connecting the EV-128MRS player to your computer	18
Disconnecting the EV-128MRS player	19
Installing the USB driver	20
Chapter 3. Using Audio Manager	22
1. Starting Audio Manager	22
Switching between the Audio Manager window and small player	23
To exit Audio Manager	23
Changing the appearance of the Audio Manager window	23
2. Identification of Audio Manager controls	24
Audio Manager window	24
3. Recording tracks from a music CD	26
Read a CD window	26
Recording tracks	28
Obtaining track information about a music CD automatically	32
4. Obtaining music files via the Internet	33
5. Organizing tracks using play list	35
Play List window	35
Creating a play list	38
Creating a play list so that it contains music files already on your computer	40
Adding tracks to the previously created play list	41
Deleting tracks from the previously created play list	42

Deleting tracks and play lists from your database	43
Editing track information	45
Playing the tracks in the play list	45
Playing the tracks on the music CD	46
Shortcut menus	47
6. Transferring tracks to the EV-128MRS player	48
Copy to Devices window	48
Transferring tracks to the EV-128MRS player	51
Viewing current memory usage status of the memory media	54
Deleting tracks from the memory media	55
Increasing the number of files that can be transferred to the EV-128MRS player	55
Formatting the internal Flash Memory and MultiMediaCard	56
Chapter 4. Using the EV-128MRS player	56
1. Player overview	56
Main unit	56
Display window	59
2. Using the player	59
Playing back tracks	61
Selecting a play mode	60
Playing a desired portion of a track repeatedly (A-B Repeat Playback)	61
Selecting equalizer settings to suit tracks	61
Chapter 5. Appendix	62
1. Specifications	62
2. Frequently asked questions	64
General questions	64
Questions about the EV-128MRS player	65
3. Troubleshooting	66

Chapter 1. Introduction

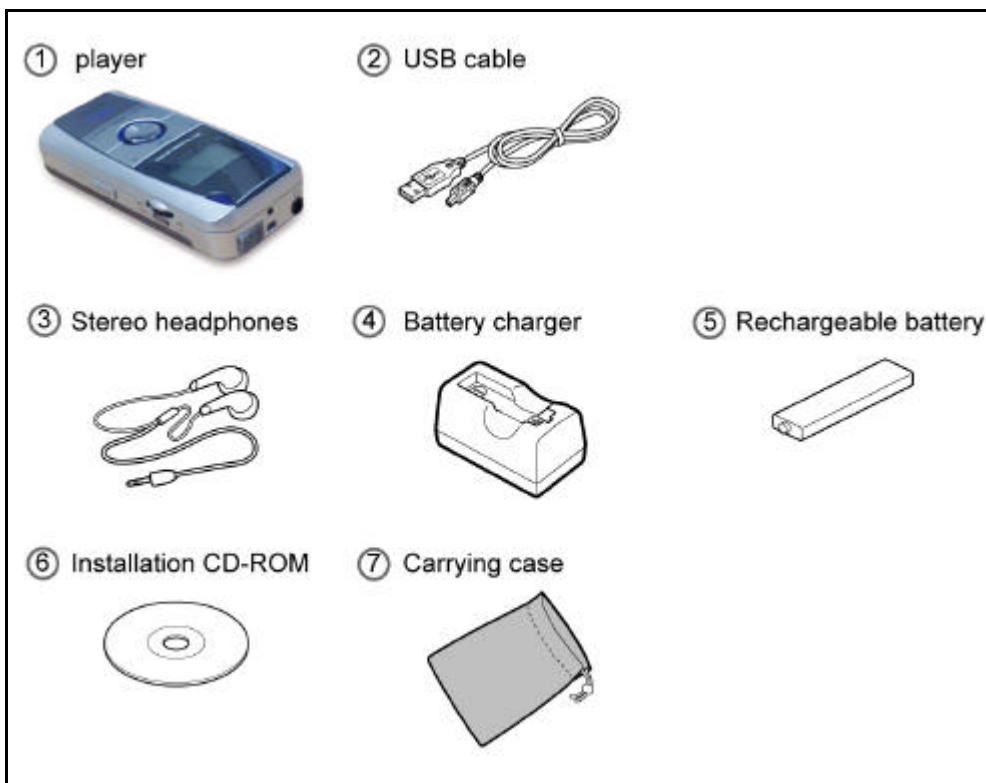
Main features

- Boosts the capability of portable audio equipment by incorporating the large internal memory size in addition to the high audio performance memory audio player.
- Having no drive mechanism results in skip-free sound.
- The USB computer interface provides high-speed transfer of music files.
- Plays back highly compressed CD-quality WMA- and MP3-format music files that have been transferred from your computer using the supplied Audio Manager software.

Accessories

The following accessories are supplied with the EV-128MRS player. Make sure all of the items are in the package.

If anything is missing, please contact the store where you purchased the EV-128MRS player.



System requirements

The following hardware and software are required for using the supplied Audio Manager software.

Hardware requirements

- Intel Pentium 233 MMX or faster
- 64MB RAM or more
- Free hard-disk space
 - 32MB or more for software installation
 - 150MB** or more for music-file storage
- CD-ROM drive that supports digital audio extraction
- 1 available USB port
- Sound card
- 256-color display (16-bit color display is recommended) and 16-bit color video card
- 28.8-kbps modem or faster required for Internet access (ISDN or LAN connection recommended)

Software requirements

- Microsoft Windows 98 or Windows 98 Second Edition*
 - * You can use the Audio Manager software only on computers on which Microsoft Windows 98 or Windows 98 Second Edition has been preinstalled by the manufacturer.

The EV-128MRS player does not support Macintosh computers.

- Microsoft Internet Explorer (Version 4.01 Service Pack 2 or later)

Note

Sound skip may occur, depending on the configuration of the computer system and the applications running on it.

About this manual

This manual includes basic instructions for using the EV-128MRS player and the supplied Audio Manager software. For detailed information on how to use the versatile functions provided by Audio Manager, refer to the Help menu that can be accessed from the Audio Manager window.




You are also recommended to read the Readme file included on the installation CD-ROM, which contains helpful supplemental information.

Viewing Help

To view Help, click "Help" in the Audio Manager window, and then click "Help Topics."

The "Audio Manager Online Help" window appears.



- Click on  to open any book and display the topics it contains.
To close a book, double-click .
- Click on  to open a topic page.
- Click an underlined term in the topic to jump to another related topic.

Searching by Keyword

1. Click the "Index" tab in the Online Help window.

A list of keywords appears.

2. Enter the word that you wish to search for or scroll the list of keywords.

3. Select a keyword from the list and click "Display."

The related topic appears.

When two or more topics are related to a selected keyword, a "Topics Found" dialog box appears. Select the desired topic from the list and click "Display."

Restrictions on transferring music files and using MultiMediaCards

For the purpose of copyright protection for music files, the EV-128MRS player and the supplied Audio Manager software have some restrictions on transferring music files and using MultiMediaCards on portable players.

- MP3 files recorded from music CDs can be transferred to up to 3 EV-128MRS players.
- WMA files recorded from music CDs can EV-128MRS players. However, future changes in the file format due to changes in specifications or because of copyright protection measures may lead to some restrictions on transferring and therefore on playing back WMA files on the EV-128MRS player. For detailed information, refer to <http://www.nowevolution.com>.
- For a music file that is obtained from a content provider via the Internet, the number of EV-128MRS players to which you can transfer the music file depends on the information written in the file by the content provider.
- A music file transferred to the player cannot be restored to your computer.

Tip

For specific restrictions on transferring music files to the EV-128MRS player, click on the “Advanced” button, which you can find in the Copy to Devices window.

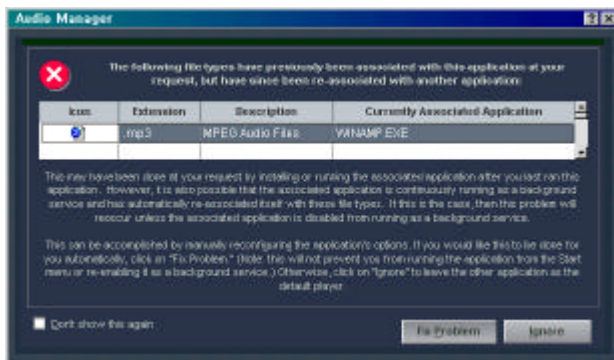
Chapter 2. Preparation

1. Installing the Audio Manager and driver software


Before using the EV-128MRS player, you must install the Audio Manager and driver software on your computer.

Before starting the installation

- Do NOT connect the EV-128MRS player to your computer.
- Quit any active applications.
- If you have already installed a different version of Audio Manager, delete it by following the procedure described in “Uninstalling the Audio Manager and driver software” (Chapter 2).
- If you install the Audio Manager software under Windows 98 (but not Windows SE), the installation program will not change the program to be associated with a WAVE (.wav) file by Audio Manager. If your system is running Windows 98, click on “Fix Problem” when the dialog box noticing you for it appears during installation.

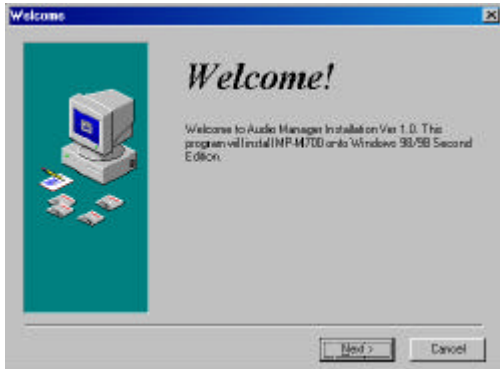


You can also change the setting after installation is finished. Click on the box to the left of “Wave Audio Files” under the “File Types” tag that can be accessed by clicking on “Options” of the “View” menu.

1. Insert the installation CD-ROM into the CD-ROM drive of your computer.
2. Double-click on the My Computer icon on the desktop.
3. Double-click on the  icon to access the CD-ROM.

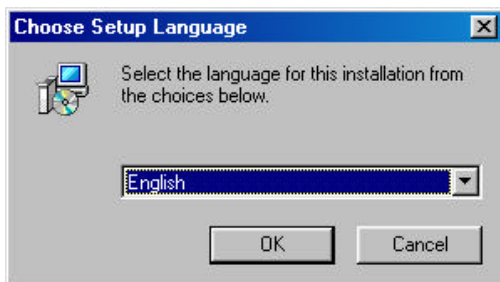
4. Double-click on the  icon to start the installation program.

The “Welcome!” dialog box appears.



5. Click on “Next.”

The “Choose Setup Language” dialog box appears.



6. Select the desired language from the drop-down menu opened by clicking on the ▾ button, then click on “OK.”

The “License Agreement” dialog box appears.

7. Click on “Yes” if you accept the terms of the Agreement.

8. Click on “Yes” in the next “Privacy Statement” dialog box if you accept the terms of the agreement.

9. Click on “Next” if you accept the default installation location or click on “Browse” to select your desired location from the “Choose Folder” dialog box.

Tip

If you wish to change the configuration, you can click on “Back” to redo any step of the installation process.

10. Click on “Next” if you accept the default location for storing created music files or click on “Browse” to select your desired location from the “Choose Folder” dialog box.

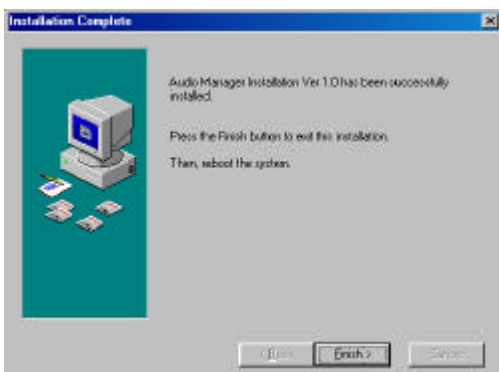
A dialog box appears and asks if you want to register Audio Manager as a default player.



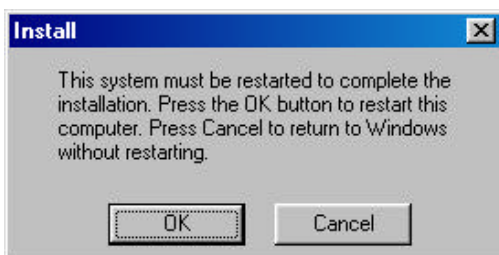
11. Click on “Yes” if you want to use Audio Manager as a default player. Otherwise, click on “No” in the dialog box.

Copying of the driver software to the computer starts.

12. Click on “Finish” in the “Installation Complete” dialog box.



13. Click on “OK” in the dialog box that prompts you to restart your computer.



When your computer finishes rebooting, installation of the Audio Manager and driver software is completed.

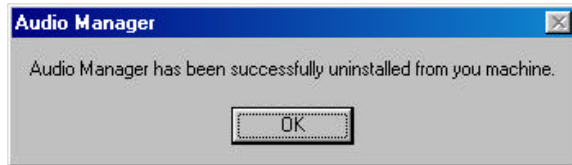
Uninstalling the Audio Manager and driver software

1. Click on the “Start” button, point to “Programs” and “Audio Manager ”, then click on “Uninstall Audio Manager”.

A dialog box appears and asks if you really want to uninstall the software.



2. Click on “Yes” in the dialog box.
3. Click on “OK” in the Uninstallation completion dialog box.



Successively uninstall the driver software.

4. Click on the “Start” button, point to “Programs” and “Audio Manager ”, then click on “Uninstall driver”.

You are finished uninstalling when you return to the desktop.

2. Preparing the EV-128MRS player

Charging the battery

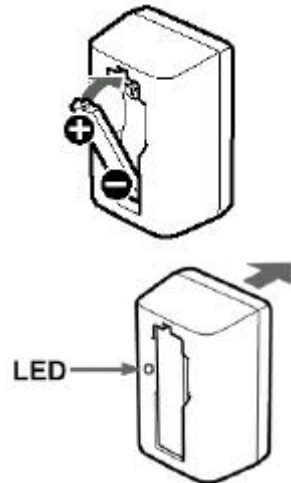
Before using the rechargeable battery for the first time, charge it for about **3 hours**.

1. Insert the rechargeable battery into the supplied battery charger.

2. Plug the battery charger into a wall outlet.

Note :

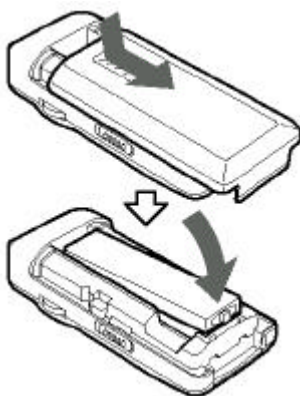
The LED will be turned on while charging the battery.
When charging is completed, the LED will be turned off.



Recharging a completely drained battery takes about **3 hours**.

When the battery has finished charging, remove it from the battery charger and disconnect the battery charger from the wall outlet.

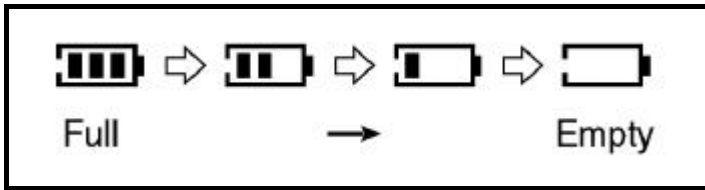
Inserting the battery

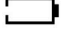
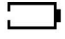


- 1. Remove the battery compartment cover.**
- 2. Install the rechargeable battery with the \oplus and \ominus poles correctly aligned.**
- 3. Replace the battery compartment cover.**

Battery indicator

The battery indicator shows the power remaining.



When  appears, recharge the battery. If you continue to use the EV-128MRS player after  is displayed, the “LOW BATT” indicator appears, operation stops, and the EV-128MRS player beeps, and the player is turned off.

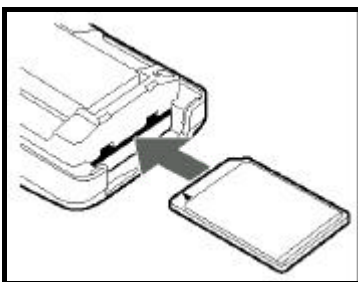
Note on the rechargeable battery

- Use only the supplied battery charger to recharge the battery.
- Do NOT carry the battery in a pocket or handbag together with metal objects such as pendants or key holders.
- Do NOT short-circuit the terminals by placing a metal object across them.
- Do NOT try to disassemble the battery, heat it, or put it in water.
- The supplied rechargeable battery can be recharged approximately 300 times.

Installing a MultiMediaCard

Before you purchase an additional contact your nearest **Evolution** service personnel to find out which kind that works best with your EV-128MRS player.

Before installing or removing a MultiMediaCard, be sure to turn off the EV-128MRS player and disconnect the USB cable from it.



1. Remove the battery compartment cover.

2. Insert the MultiMediaCard into the slot in the correct direction, holding it with the beveled corner to the right.

The mark printed on the player over the slot indicates the correct orientation of the card.

3. Replace the battery compartment cover.

To remove the MultiMediaCard

First push the MultiMediaCard in slightly to release it.

Formatting a MultiMediaCard

In order to use a MultiMediaCard with an EV-128MRS player, you must initialize it to EV-128MRS format using the format function of the supplied Audio Manager.

For details on formatting a MultiMediaCard, see "Formatting the internal Flash Memory and MultiMediaCard" (Chapter 3).

Note on the MultiMediaCard

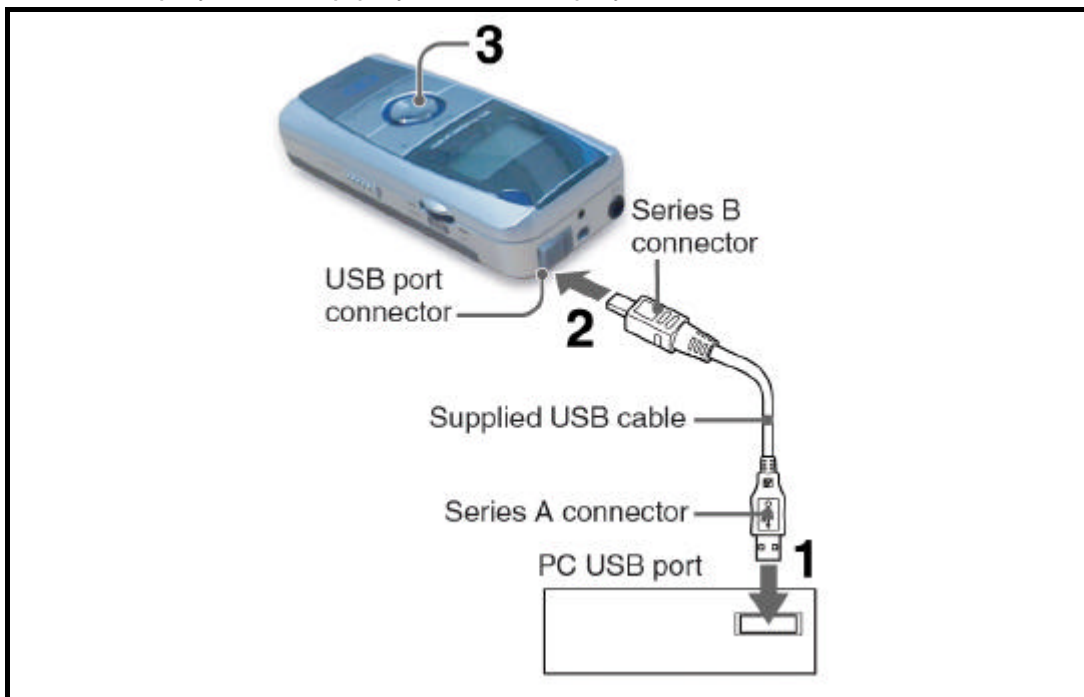
- Insert the MultiMediaCard completely into the slot to ensure that it is recognized by Audio Manager.
- NEVER remove the MultiMediaCard from the EV-128MRS player while Audio Manager is formatting it or transferring music files to the EV-128MRS player. Doing so may cause not only the computer to freeze up but also the memory media to be damaged.
- Music files on the MultiMediaCard cannot be played back with another player.

3. Connecting the EV-128MRS player to your computer

Use the supplied USB cable to connect the EV-128MRS player to your computer, as shown below.

1. Connect the series A connector (the larger one) to the computer's USB port.
2. Connect the series B connector (the smaller one) to the USB port connector of the EV-128MRS player.
3. Turn on the player by holding the **■||▶** button pressed until "CONNECT USB" appears on the display of the EV-128MRS player.

If you connect the USB cable to the EV-128MRS player while it is in Playback mode, the player will stop playback and display "CONNECT USB."



Note

If the "Add New Hardware Wizard" appears after you turn on the EV-128MRS player in step 3, install the USB driver, following the procedure described in "Installing the USB driver" (chapter 2).

- Before connecting the EV-128MRS player to your computer with the supplied USB cable, be sure to fully charge the battery.

If "LOW BATT" or "NO BATT" appears on the display of the EV-128MRS player when it is connected to the computer, disconnect the EV-128MRS player from the computer, then reconnect it after fully charging the battery.

- The following actions are strictly prohibited while transferring music files or formatting the memory media. Doing so may cause not only the computer to freeze up but also the memory media to be damaged.

—Disconnecting the USB cable from the EV-128MRS player or the computer

—Removing the battery from the EV-128MRS player

—Removing the MultiMediaCard from the EV-128MRS player

- Do NOT turn on or off the computer while the EV-128MRS player is connected to the computer. This may cause damage to the EV-128MRS player or the music files stored on it.

Disconnecting the EV-128MRS player

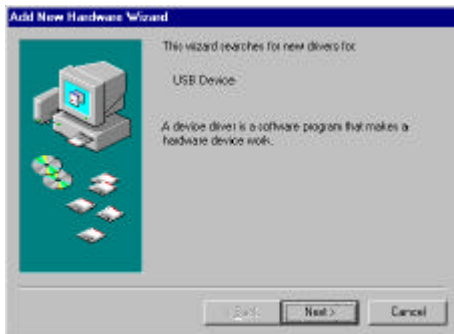
You can disconnect the EV-128MRS player from your computer whenever you like except during the process of transferring music files or formatting the memory media.

When you disconnect the USB cable from the EV-128MRS player, it will automatically shut off, leaving the message "GOOD-BYE"

Installing the USB driver

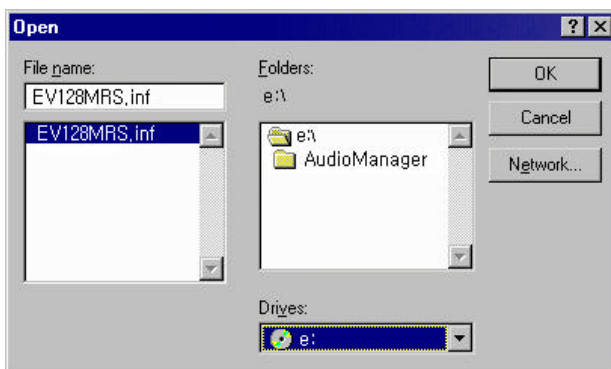
Installation of the USB driver is automatically performed when you turn on the EV-128MRS player for the first time after connecting it to the computer (chapter 2).

If any problem occurs during installation of the Audio Manager software, the “Add New Hardware Wizard” appears when you connect the EV-128MRS player and turn it on. If this happens, install the USB driver by following the steps below.



1. Click on “Next” in the “Add New Hardware Wizard” window.
2. Select “Display a list of all the drivers in a specific location, so you can select the driver you want”, then click on “Next”.
3. Select “Universal Serial bus controllers” from the list, then click on “Next”.
4. Click on the “Have disk” button.
5. Insert the supplied installation CD-ROM into the CD-ROM drive of your computer, then click on the “Browse” button.

The “Open” dialog box appears.



6. Select an appropriate drive from the “Drives” drop-down menu, then click on “OK”.
7. Click on “Next” after confirming that **“EV-128MRS”** is listed in the “Models” list box.

A window appears telling you that Windows is ready to install the driver.


8. Click on “Next”.

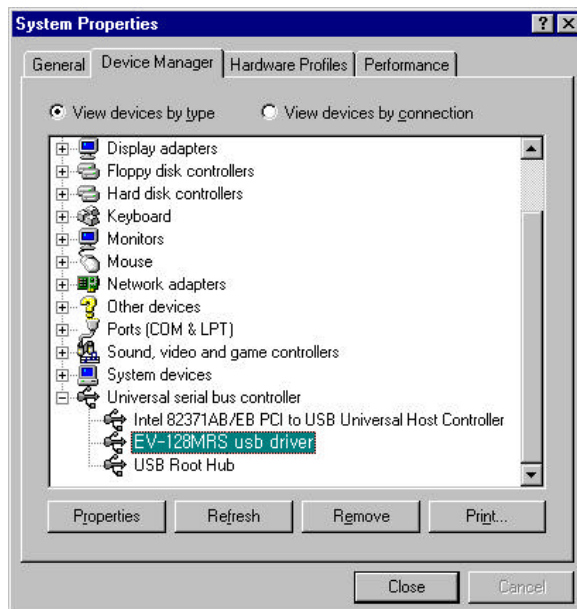
The wizard begins copying the necessary files to your computer. A subsequent window appears when copying of files is completed.

9. Click on “Finish”.

Confirming Installation of the USB driver


You can confirm if the USB driver is successfully installed by the following procedure:

1. Check that the EV-128MRS player is connected to your computer and turned on.
2. Point to “Settings” of the “Start” menu, then click “control Panel”.
3. Double-click on the “System” icon to open the “System Properties” dialog box.
4. Click on the “Device Manager” tab.
5. Click on the  mark of the “Universal Serial Bus controllers” item.
6. If **“EV-128MRS USB driver”** is listed, the USB driver is successfully installed.



Chapter 3. Using Audio Manager

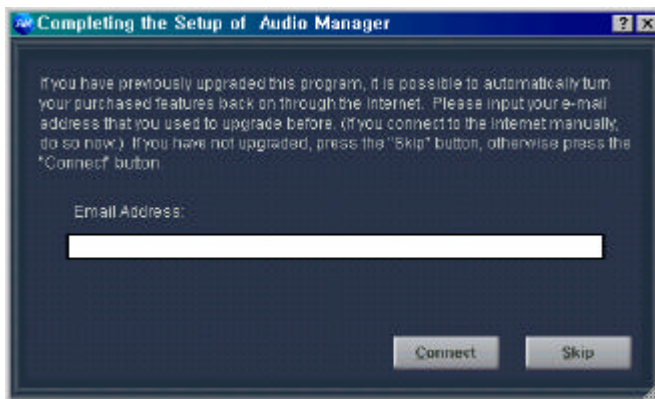
1. Starting Audio Manager

To start Audio Manager, double-click on the  (Audio Manager) icon on the desktop.

You can also click on the “Start” button, point to “Programs” and “Audio Manager,” then click on “Audio Manager.”


Note

When you start Audio Manager for the first time after installation, the following dialog box appears.



If you have ever installed and upgraded Audio Manager, enter our e-mail address and click on “Connect.” If not, click on “Skip,” and “OK” in the next dialog box.

Switching between the Audio Manager window and small player

To switch to the small player, click on the  (Small Player) icon to the right of the navigation buttons bar in the Audio Manager window.


You can also click on “Small Player” of the “View” menu.

To switch to the Audio Manager window (big player), right-click on the area within the small player, then select “Big Player” from the shortcut menu.

Tip

Each time you press the F8 key, Audio Manager switches between the big player and small player.

To exit Audio Manager

Click on  the upper-right corner of the Audio Manager window and small player.

You can also click on “Exit” from the “File” menu in the Audio Manager window or the shortcut menu of the small player that appears when you right-click.

Changing the appearance of the Audio Manager window

In Audio Manager, several skins of different design are available, which allow you to change the appearance of your Audio Manager window (also of the small player) to suit your preference.

Click on “Link to more skins” of the “Skins” menu in the Audio Manager window to connect to the Web site, where you can find and download skins of your preference.

When you are displaying the small player, click on “Skins” from menu of the small player that appears when you right-click.

2. Identification of Audio Manager controls

Audio Manager window

To make full use of the EV-128MRS player, you need to learn how to use the basic functions of the Audio Manager.



(Audio Manager with the Play List Window opened)

1 Menu bar

Clicking on an item opens a drop-down menu from which you can select commands. The following is the “View” menu opened by clicking on the “View” item on the menu bar.



To learn how each menu command functions, refer to the “Quick Reference” book in the Online Help window.

2 Audio Manager navigation buttons



make a playlist button

Click on this button to open the Play List window, which allows you to listen to tracks and organize tracks into play lists as you like, such as by artist, genre, etc. (chapter 3-5).

**copy to devices button**

Click on this button to open the Copy to Devices window, which allows you to transfer tracks from your computer to your EV-128MRS player (chapter 3-6). The Copy to Devices window also allows you to view a list of tracks and delete tracks stored on the memory media.

**write audio cd button**

Click on this button to open the Write CD window, which allows you to record tracks from your computer on a CD-R.

Note

EV-128MRS does not support the functions available in the Write CD window. For detailed information about the Write CD window, refer to the "Write to a CD" book in the Online Help window.

**read a cd button**

Click on this button to open the Read a CD window, which allows you to record tracks from a music CD to your computer (chapter 3-3).

**go to web button**

Click on this button to connect to the WindowsMedia.com Web site (chapter 3-4).

**Small Player icon**

Click on this icon to transform Audio Manager into a Small Player. For a description of each control, see "Player controls" (chapter 3-5-5).



When you start playing back tracks on Small Player, the WhiteCap window appears giving representations with 3-D curve graphics.

Note

Minimizing Small Player causes the WhiteCap window to disappear. To restore the WhiteCap window, quit audio Manager and restart it.

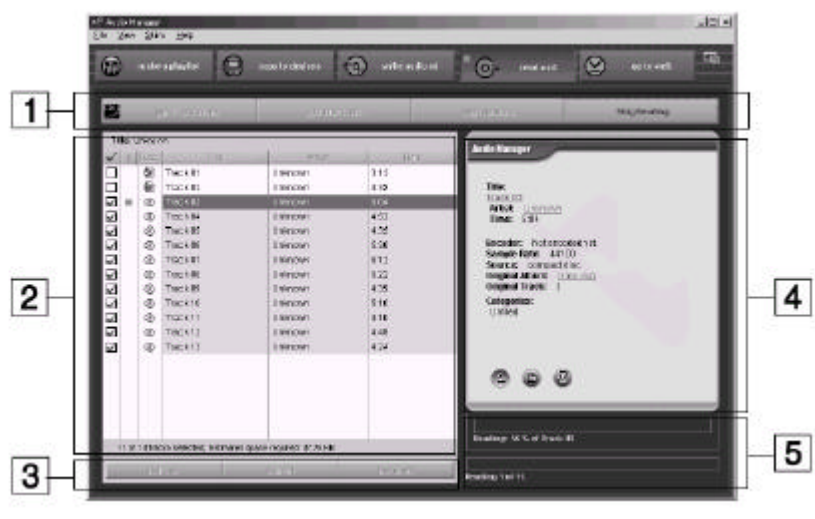
Tip

You can display each window using the "Navigation" command of the "View" menu instead of using above buttons.

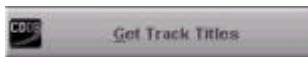
3. Recording tracks from a music CD

Read a CD window

The Read a CD window allows you to record selected tracks from a music CD or record an entire music CD at once. The recorded tracks can be transferred to your EV-128MRS player for playback.



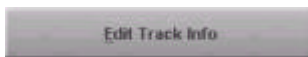
1 Read a CD button bar



button

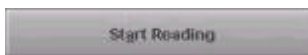
Click on this button to obtain information about the inserted music CD from the CDDb server on the Internet (chapter 3-3).

The CDDb service may require a charge in the future. If you want to keep using the CDDb service at this time, a license will be provided by the CDDb service.



button

Click on this button to open the "Preview Play List" window, which allows you to edit the CD or track information manually.



button

Click on this button to start recording tracks from a music CD.



button

Click on this button to stop recording.

2 Read a CD Track list

Displays information about the loaded music CD, such as an album title, and the title, artist, and length of each track on the music CD.

Select the tracks you want to record by clicking on the box to the left of each track.

3 Read a CD Track list button bar



Click on this button to reload information on the music CD.



Click on this button to select all the tracks on the list for recording. All the boxes to the left of the tracks are checked at once.



Click on this button to clear the check marks for all the tracks on the list at once.

4 Track Details box

Displays information about the selected track, such as the title, artist, playing time, album title, category, and lyrics. You can view more detailed information and edit it by clicking on the "Edit Track Info" button.

5 Status box

Displays the current progress of the recording process. The upper status bar displays the recording progress of the track currently being processed, and the lower status bar shows the overall recording progress for all the tracks selected for recording.

Recording tracks


Before starting

Before starting you may confirm and change the settings to use when recording tracks from a music CD by following the steps below.


To learn more about setting preferences, refer to the “Set Preferences” book in the Online Help window.

- ① Click on “Options” of the “View” menu to open the “Options” dialog box.
- ② Under the “Read CD” tab, confirm the following settings and change them if necessary.


Drive:

Choose the CD-ROM drive to use when recording tracks from a music CD. If you have multiple CD-ROM drives in your computer, you can change the current CD-ROM drive by clicking on  to the right of the “Drive:” field.

Record File As:

Choose the file format to use when recording tracks from a music CD by clicking on  to the right of the “Record File As:” field. You can choose between “Mpeg (.mp3)” and “Microsoft Windows Media Audio (.wma).”

Bit Rate:

Select the bit rate to be used to encode tracks recorded from a music CD. Click on  to the right of the “Bit Rate:” field, then select one of items. Higher bit rates create files with better sound quality, but larger file sizes result in less total recording time that can be stored on the memory media.

Note

- The EV-128MRS player supports WMA and MP3 files encoded with a following bit rate. Files encoded with other bit rates may cause inaccuracy of elapsed playing time indicated on the display and sound skip.
 - WMA files encoded with a bit rate of 64, 80, 96, 128, or 160 kbps
 - MP3 files encoded with a bit rate of 64, 80, 96, 128, 160, 192, 256, or 320 kbps.
- Be sure not to check the “Protect files for use on this machine only” option in the “Bit Rate:” field, if you want to play back the encoded files on another computer or transfer them to the EV-128MRS player using another computer.

③ Under the “CDDDB” tab, check the “Always get title from CDDDB when CD is inserted” option by clicking on it if you want information about a music CD to be obtained automatically.

If you check this option, you can obtain general information about a music CD, such as album title, track titles, artist name, and playing time from the CDDDB* server on the Internet.

Otherwise, leave this option unchecked.

You must have Internet access to use CDDDB.

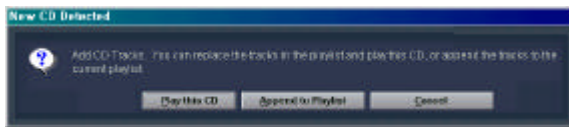
* The disc-recognition service provided via the Internet by CDDDB, Inc.



1. Double-click on the Audio Manager icon on the desktop to start Audio Manager.

2. Insert the music CD from which you wish to record tracks into the CD-ROM drive of your computer.

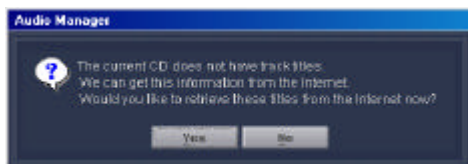
If the Play List window is open and any tracks remain on the list, the “New CD Detected” dialog box appears, asking you to select “Play this CD,” “Append to Play List,” or “Cancel.” If this dialog box appears, click on “Cancel” in the dialog box.



3. Click on the “Read a CD” button to open the Read a CD window.

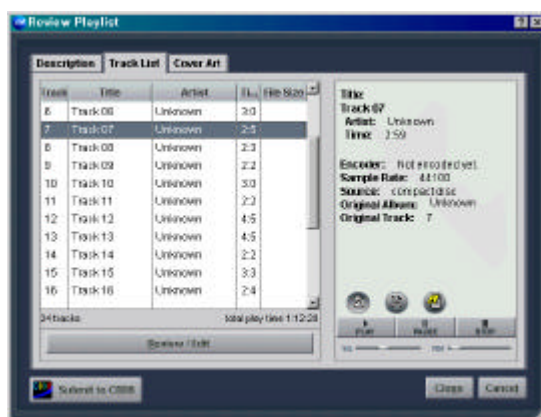
The Read a CD window appears with all the tracks on the music CD checked for recording.

If you did not check the “Always get title from CDDDB when CD is inserted” option mentioned above, the dialog box appears and prompts you to obtain information about the inserted music CD automatically. Now, click on “No” so you can edit information manually.



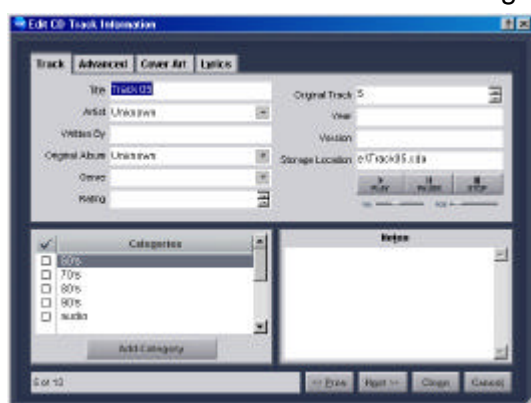
If you want to record the entire music CD into your computer, skip steps 4 and 5, and go to step 6.

The “Preview Playlist” window appears.



② Select the track that you want to edit, then click on the “Review/Edit” button.

The “Edit CD Track Information” dialog box appears.



③ Enter information about the track such as the title, artist, album title, genre, and lyrics.

In some fields, you can select the desired item from the drop-down list by clicking on to the right of the field.

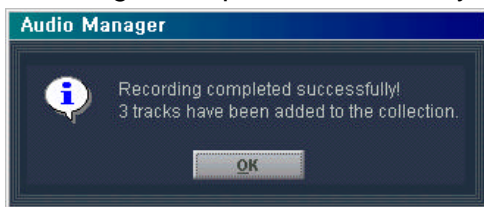
- ④ Click on “Next” once or more times to go to the next track to edit. When you have no more tracks to edit, click on “Close.”
- ⑤ Click on “Close” to close the “Preview Playlist” window. To learn more about how to use the “Edit CD Track Information” dialog box, refer to the “Edit Track Information” under the “Play List” book in the Online Help window.

7. Click on the “Start Reading” button.

The recording process for the selected tracks starts. The Status box displays the progress of the track currently being recorded and the total recording progress of all the tracks selected for recording.

To stop recording, click on the “Stop Reading” button.

When the entire track is successfully recorded, the dialog box stating that recording is completed successfully appears.



If you are going to record tracks from a CD for the first time, the “Testing CD drive...” dialog box appears stating that your system and CD-ROM drive is being tested. Through this process, your system and CD-ROM drive will be automatically configured and optimized for recording.

Note

As to MP3 format, the number of times allowed for encoding is limited to 50. If you try to record tracks from a music CD past that limit, a message notifying you of that will appear once you click on the “Start Reading” button. If this happens, you can use WMA file format, which has no such limitation.

8. Click on “OK.”

The recorded tracks are added to your database.

Now you are ready to go to “Creating a play list” (chapter 3-5).

Obtaining track information about a music CD automatically

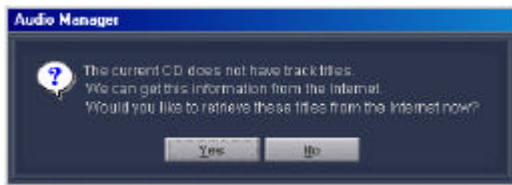
If you have access to the Internet, you can obtain information about the music CD, such as the album title, track title, and artist name, automatically from the CDDB on the Internet.

The CDDB is a database accessible via the Internet, which stores track information regarding a vast amount of music CDs from all over the world. If your music CD is recorded in the database, the track information about the CD will be added to your list. If not, no change will be made to the list. In such a case, you are left with entering the information manually.

To get track information about your music CD, perform the following.

- 1. Confirm that you are connected to the Internet.**
- 2. Insert the music CD into the CD-ROM drive of your computer.**

A dialog box appears asking you if you want to get information about the CD from the Internet.



- 3. Click on "Yes" in the dialog box.**

The connection to the CDDB is automatically established, and downloading starts.

- 4. When downloading is finished, information about your music CD will be displayed on the list.**

Tip

You can get information at any time you like, but before you start recording, by clicking on the "Get Track Titles" button, even if you clicked "No" in step 3 in "Recording tracks" (chapter 3-3). If you click on the "Refresh" button the above dialog box will appear.

4. Obtaining music files via the Internet

Audio Manager provides easy and convenient means to stream music, download music clips, and purchase music via the Internet. Clicking on a single button automatically connects you to the WindowsMedia.com Web site, where you can find vast amounts of music downloads covering almost all popular artists in the world and genres, a variety of entertainment contents such as movies and radio, information about hardware and software. This site also provides many links to other entertainment Web sites.

Note

You must have Internet access to download music via the Internet.

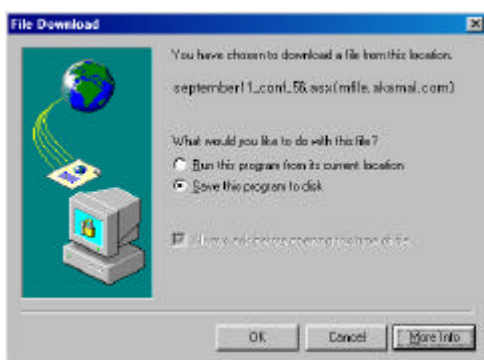


1. Click on the “ go to web” button on the Audio Manager window.

The WindowsMedia.com Web site appears.

2. Search for desired music through links of your preference, or enter a different Web site address in the address field if you know it.
3. When you find your desired music file, start downloading it by clicking on the “Download” button or other such button that may be displayed in a particular case.

The “File Download” dialog box appears.

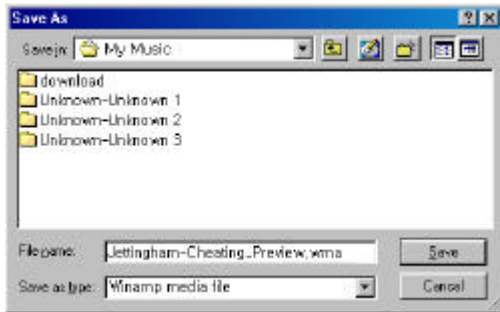


Note

With most contents provider on the Internet, you may be required to fill in information on an enrollment form for membership before you can download music files.

4. Check the “Save this file to disk” option and click on “OK.”

The “Save As” dialog box appears.



5. Check that “My Music” is entered in the “Save in” field, enter a filename if necessary, then click on “Save.”

Downloading starts. When downloading is finished, the “Download complete” dialog box appears.

6. Click on “OK” in the dialog box.

Now you are ready to play the downloaded music file on the Audio Manager and your EV-128MRS player.

For detailed information about obtaining downloadable music files, refer to the “Visit the Internet to get audio and video” and “Play Secure Media” books in the Online Help window.

Note

Most downloadable music files are delivered in a secure files that have encrypted information for copyright protection written in them. Therefore, you may be restricted as to playing back and transferring downloaded music files.

5. Organizing tracks using play list

Play List window

You can use the Play List window to view all the tracks stored on your computer, as well as to create play lists and add selected tracks to them. The Play List window also allows you to play back the tracks you added from your database* to the Play List. If you save the tracks displayed on the Play List as a play list, you can easily prepare a number of tracks for transfer to your EV-128MRS player.

* Music files recorded or downloaded to your computer using Audio Manager are automatically added to your database. Music files already on your computer can be also added to your database. To learn more about the database, refer to the "Tracks Database" and "Play List Database" books in the Online Help window.



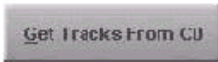
1 Add Tracks to the Play List button bar

Select Tracks From Database button

Click on this button to select desired tracks from your database and add them to the Play List.

Select Playlists From Database button

Click on this button to select desired play lists from your database and add the tracks contained in them to the Play List at once.



button

Click on this button to add the tracks from the music CD in the CD-ROM drive of your computer to the Play List.




2 Play List

Displays the list of the tracks you have added from your database or the music CD in the CD-ROM drive of your computer. Each track has information such as the track title, artist name, original album title and playing time, and also an icon that represents its file type.



A track in MP3 file format



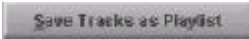
A track in WMA file format (Windows media Audio) file format An icon preceding the track in the Play List indicates the play status of the track (stopped, in play, or play paused.) this icon changes among ,  and  depending on the play status of the track.

3 Organize the Play List button bar



button

Click on this button to clear all the tracks from the Play List.



button

Click on this button to save the tracks displayed on the Play List as a play list, which gives you an easy way to access these grouped tracks for playback and transfer to your EV-128MRS player.



button

Click on the trash can to delete the selected track from the Play List.



button

Click on this button to move a selected track up in the Play List order.



button

Click on this button to move a selected track down in the Play List order.

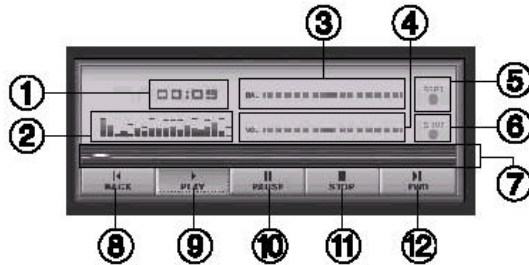
4 Track Details box

Displays detailed information about the selected track, such as the track title, artist name, original album title, ratings, artwork, and lyrics.

You can edit these details by right-clicking on the track and selecting the "Edit Track" menu command.

5 Player controls

Provide basic functions for playing back tracks with Audio Manager.



① **Elapsed playing time indicator**

② **Input level indicator**

③ **Balance control slider**

Drag the slider to adjust the balance between the left and right speakers.

④ **Volume control slider**

Drag the slider to the right or left to adjust the volume.

⑤ **Repeat play button**

Plays the current track repeatedly.

⑥ **Shuffle play button**

Plays all tracks in random order.

⑦ **Track Position slider**


Drag the slider to start playback at a different position within the track.

⑧  **(Backward) button**

Plays the previous track.

⑨  **(Play) button**

Starts playback of the selected track.

⑩  **(Pause) button**

Pauses playback. To resume playback, click on  again or click on




⑪  **(Stop) button**

Stops playback.

⑫  **(Forward) button**

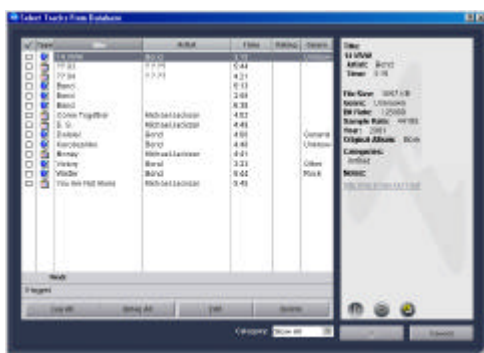
Plays the next track.

Creating a play list

1. Click on the “ make a playlist” button to open the Play List window if it is not already open.
2. Click on the “Clear List” button to clear the tracks already in the Play List.
3. Click on the “Select Tracks From Database” button.

The “Select Tracks From Database” window appears.

You can also click on the “Select Playlist from Database” button instead if you have already created play lists.




4. Select the tracks that you want to add to the new play list by clicking on the box to the left of each track.

To cancel the selection, click on the box again.

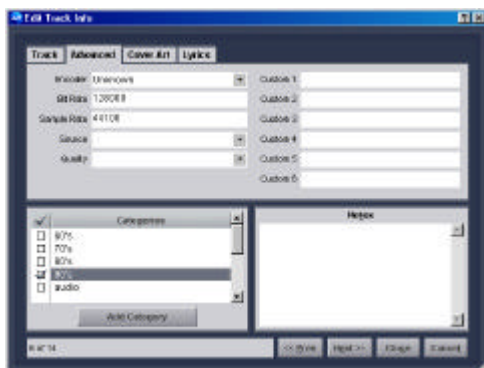
5. Click on “OK” when you have finished selecting the tracks.

The selected tracks are displayed in the Play List.

If there is any track that you want to exclude from the selections, select it and click on .

6. Click on the “Save Tracks as Playlist” button.

The “Add Playlist” window appears.



7. Name the new play list and fill in the other information fields under the “Description” tab.

8. If necessary, enter information about the tracks contained in the new play list in the “Edit Track Info” dialog box that can be opened by right-clicking on the area within the list, then selecting the “Edit Track...” menu command under the “Track List” tab.

9. Click on “Close” in the “Add Playlist” window when you have finished.

The dialog box stating that the play list has been saved appears.

10. Click on “OK.”

You can find the new play list in the “Select Playlist From Database” window that can be opened by clicking on the “Select Playlist From Database” button on the Play List window.

Now you are ready to transfer the tracks to your EV-128MRS player.

Functions available in the Select Tracks From Database window


Following operations are available in the “Select Tracks From Database” window:

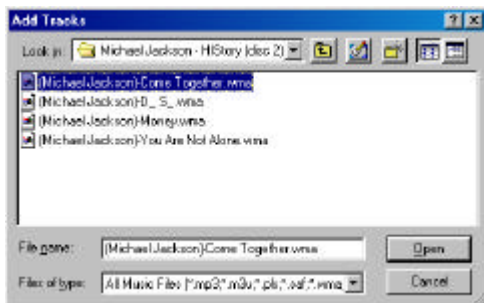
- Sort the track order by track title, artist name, original album title or playing time by clicking on the corresponding column label.
- Use the “Find:” field to locate your target track easily. Click on the label of the column that you want to search, then type the name of the target track in the “Find:” field that you can find under that column.
- Edit track information by clicking on the “Edit” button after selecting the track.
- Listen to the track by right-clicking on the track and selecting “Play” from the shortcut menu. This is helpful when you are not sure that the track you selected is correct.

Also in the “Select Playlist From Database” window, similar operations are available with play lists.

Creating a play list so that it contains music files already on your computer

If you know where the music files are stored

1. Click on the “ make a playlist” button to open the Play List window if it is not already open.
2. Click on the “Clear List” button to clear the tracks on the Play List.
3. Click on “Add Tracks” of the “File” menu to open the “Add Tracks” dialog box.




4. Select the music files that you want to add to the play list, then click on “Open.”

The selected music files are automatically added to your database and displayed on the Play List.

5. Click on the “Save Tracks as Playlist.”
6. Name the new play list, fill in the other fields, then click on “Close.”
7. Click on “OK” in the dialog box that appears successively.

If you do not know where the music files are stored

1. Click the “ make a playlist” button to open the Play List window if it is not already open.
2. Click on the “Clear List” button to clear the tracks on the Play List.
3. Click on “Search Hard Disks for Tracks” of the “File” menu.

All the music files stored on your computer are automatically added to your database and displayed on the Play List.

4. Click on the “Clear List” button to clear the tracks on the Play List.
5. Click on the “Select Tracks From Database” button.

The “Select Tracks From Database” window appears.

6. Select the tracks that you want to add to the new play list by clicking on the box to the left of each track, then click on “OK” when you have finished.

The selected tracks are displayed in the Play List on the Play List window.

7. Click on the “Save Tracks as Playlist.”

8. Name the new play list, fill in the other fields, then click on “Close.”

9. Click on “OK” in the dialog box that appears successively.

Note

Choosing the “Search Hard Disks for Tracks” option in step 3 brings up all the music files, including those transfer of which the EV-128MRS player does not support, such as .wav and RA files, to the Play List.

Adding tracks to the previously created play list

1. Click on the “ make a playlist” button to open the Play List window if it is not already open.

2. Click on “Select Playlists From Database” button.

The “Select Playlists From Database” window appears.

3. Select the play list to which you want to add the tracks by clicking on the box to the left of the play list, then click on the “Edit” button.

The “Edit Playlist” window appears.

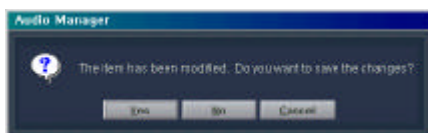
4. Click on the “Add Track” button under the “Track List” tab.

The “Select Tracks From Database” window appears.

5. Select the tracks that you want to add to the play list by clicking on the box to the left of each track, then click on “OK.”

6. Click on “Close” after confirming that the selected tracks are added to the list in the “Edit Playlist” window.

7. Click on “Yes” in the dialog box asking you if you really want to save the changes.



8. Click on “OK” in the “Select Playlists From Database” window.

Deleting tracks from the previously created play list

1. Click on the “ make a playlist” button to open the Play List window if it is not already open.

2. Click on “Select Playlists From Database” button.

The “Select Playlists From Database” window appears.

3. Select the play list from which you want to delete the tracks by clicking on the box to the left of the play list, then click on the “Edit” button.

The “Edit Playlist” window appears.

4. Select the track that you want to delete from the play list, then click on

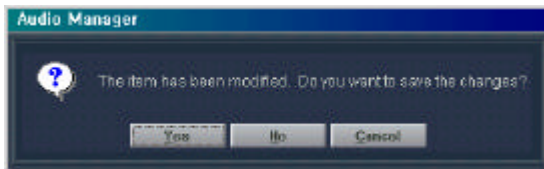


You can also use the shortcut menu that appears when you right-click to delete the selected track.

5. Repeat step 4, if necessary.

6. Click on “Close” when you have finished.


7. Click on “Yes” in the dialog box asking you if you really want to save the changes.

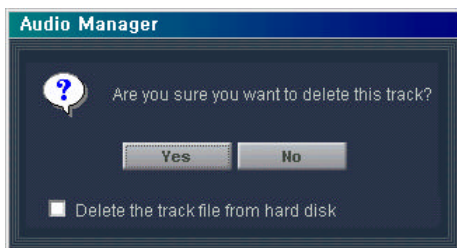


8. Click on “OK” in the “Select Playlists From Database” window.

Deleting tracks and play lists from your database

Deleting tracks from your database

1. Click on the “ make a playlist” button to open the Play List window if it is not already open.
2. Click on the “Select Tracks From Database” button to open the “Select Tracks From Database” window.
3. Click on the track you want to delete to highlight it, then click on the “Delete” button.



A dialog box appears and asks you if you really want to delete the track.

NEVER check the “Delete the track file from hard disk” option unless you are sure you want to delete the track, or you may lose your music files forever.

4. Click on “Yes.”
5. Repeat the procedure for the remaining tracks.
6. Click on “OK” when you have finished.

Tip

Instead of using the “Delete” button, you can use the shortcut menu that appears when you right-click to delete all the selected tracks at once.

Select the tracks you want to delete by clicking on the box to the left of each track, then right-click on the area within the list and select “Delete Tagged Tracks” from the shortcut menu.

button to open the Play List window if it is not already open.

2. Click on the “Select Playlists From Database” button to open the “Select Playlists From Database” window.

3. Click on the play list that you want to delete to highlight it, then click on the “Delete” button.

A dialog box appears and asks you if you really want to delete the play list.

4. Click on “Yes.”

5. Repeat the same procedure for the remaining play list.

6. Click on “OK” when you have finished deleting all the play lists.



Tip

Instead of using the “Delete” button, you can use the shortcut menu that appears when you right-click to delete all the selected play lists at once.


Select the play lists you want to delete by clicking on the box to the left of each play list, then right-click on the area within the list and select “Delete Tagged Playlists” from the shortcut menu.

dialog boxes and meaning of the fields contained in the dialog boxes, refer to the “Work with Tracks” book in the Online Help window.

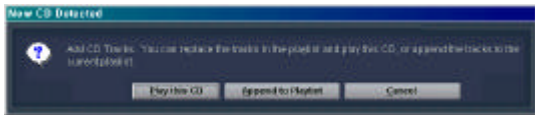
Playing the tracks in the play list

1. Click on the “ make a playlist” button to open the Play List window if it is not already open.
2. Click on the “Clear List” button to clear the tracks on the Play List.
3. Click on the “Select Playlists From Database” button.
The “Select Playlists From Database” window appears.
4. Select the desired play list by clicking on the box to the left of the play list, then click on “OK.”
5. Click on the desired track, then click on .

Playing the tracks on the music CD

1. Click on the “ make a playlist” button to open the Play List window if it is not already open.
2. Click on the “Clear List” button to clear the Play List.
3. Insert the music CD into the CD-ROM drive of your computer, or click on the “Get Tracks From CD” button if the music CD is already in the CD-ROM drive.

If you do not clear the list in step 2, the “New CD Detected” dialog box appears when you insert the CD into the CD-ROM drive and asks you to select “Play this CD,” “Append to Playlist,” or “Cancel.”



- Click on “Play this CD” to delete the current entries in the Play List and replace them with the tracks on the CD. The CD will begin playing.
- Click on “Append to Playlist” to add the tracks on the CD to the tracks already in the Play List.

4. The tracks contained on the music CD are displayed on the Play List.

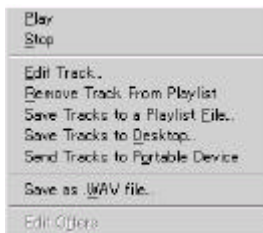
If you did not check the “Always get title from CDDb when CD is inserted” option, a dialog box appears and prompts you to obtain information about the inserted music CD automatically. If you want to get information about the music CD, click on “Yes.” Otherwise, click on “No.”

5. Click on the desired track, then click on .

Shortcut menus

With most of the windows of Audio Manager, there is a shortcut menu that appears when you right-click. Right-clicking on a track or play list opens a shortcut menu that allows you to easily select a frequently used command.

Below is the shortcut menu opened by right-clicking on the track listed in the Play List window.



Note

Any grayed-out menu command is disabled. So you cannot select it.

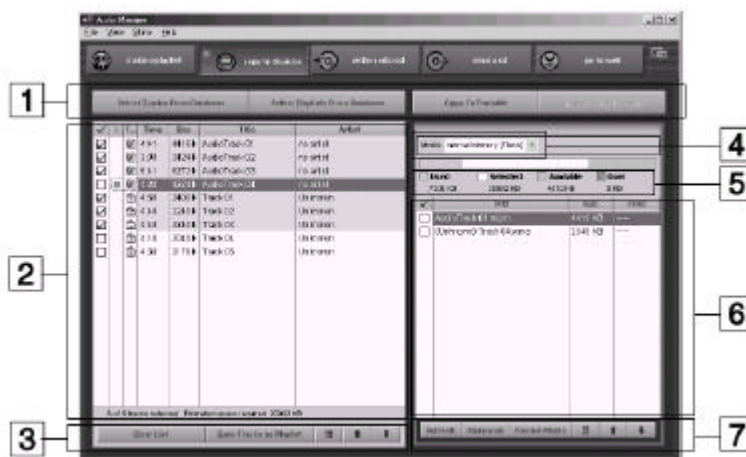
6. Transferring tracks to the EV-128MRS player

To enjoy listening to music on the EV-128MRS player, you must transfer music files stored on your computer to your EV-128MRS player. You can use Audio Manager to transfer MP3 files as well as WMA (Windows Media Audio) files to the EV-128MRS player.

Copy to Devices window

The copy to Devices window allows you to select tracks or play lists from your database and transfer them to your EV-128MRS player.

This window also provides the facility to manage the portable player connected to your computer such as formatting memory media on the portable player and deleting tracks from the memory media.



1 Device window button bar

Select Tracks From Database button

Click on the button to select desired tracks from your database and add them to the Transfer List.

Select Playlists From Database button

Click on this button to select desired play lists from your database and add them to the Transfer List.

Copy To Portable button

Click on this button to start transfer.

2 Transfer List




Displays the list of the tracks you have selected from your database for transfer to your EV-128MRS player. Each track has information such as the playing time, size, track title and artist name, and also an icon that represents its file type.



button A track in MP3 file format



button A track in WMA file format

An icon preceding the track on the Transfer List indicates the play status on the track (stopped, in play, or play paused.) this icon changes among ,  and  depending on the play status of the track.

3 Organize the Transfer List button bat

Clear List

button

Click on this button to clear all the tracks from the Transfer List.

Save Tracks as Playlist

button

Click on this button to save the tracks displayed on the Transfer List as a play list, which gives you an easy way to access these grouped tracks later.



button

Click on the trash can to delete the selected track from the Transfer List.



button


Click on this button to move a selected track up in the Transfer List order.



button

Click on this button to move a selected track down in the Transfer List order.

4 Memory media drop-down list

Displays the currently selected memory media. If your EV-128MRS player has a MultiMediaCard in the slot, select either "Internal Memory(Flash)" or "External Memory(MMC)" to which you wish to transfer tracks by clicking on  button.

5 Device Usage bar

Gives you a graphic representation of current memory usage status of the memory media selected in the "Media:" field.

6 Portable Track List

Displays the list of the tracks stored on the currently selected memory media including the track title and size for each track.

7 Portable Track List button bar

 **button**

Click on this button to redisplay the Portable Track List to match the contents of the selected memory media.

 **button**

Click on this button to display information about restrictions on transferring music files to the EV-128MRS player.

 **button**

Click on this button to initialize the memory media (internal and external) on the EV-128MRS player.

You can usefully use this button when you want to delete all the tracks from the memory media.

 **button**

Click on the trash can to delete the selected track from the Portable Track List. Note that this causes the track not only to disappear from the list but also to be deleted from the memory media.

 **button**

Click on this button to move a selected track up in the Portable Track List order.

 **button**

Click on this button to move a selected track down in the Portable Track List order.




Transferring tracks to the EV-128MRS player

Before starting

- Before connecting the EV-128MRS player to your computer, be sure to fully charge the battery.
- Check that the internal Flash Memory or MultiMediaCard has enough available memory to store the transferred tracks. You can find this information in the Device Usage bar.
- Check that files to be transferred are not encoded with a bit rate or sampling frequency outside the range supported by the EV-128MRS player. For more information about the supported bit rates and sampling frequencies, see chapter 5.

• The following actions are strictly prohibited while transferring music files. Doing so may cause not only the computer to freeze up but also the memory media to be damaged.

- Disconnecting the USB cable from the EV-128MRS player or the computer
- Removing the battery from the EV-128MRS player
- Removing the MultiMediaCard from the EV-128MRS player

1. **Connect your EV-128MRS player to your computer (chapter 2-3).**
2. **Turn on the player by holding the  button pressed until "CONNECT USB" appears on the display of the EV-128MRS player.**
3. **Click on the " copy to devices" button to open the Copy to Devices window if it is not already open.**
4. **Click on the  to the right of the "Media:" field and select "Internal Memory (Flash)" or "External Memory (MMC)" from the drop-down list.**

Note

If you select the MultiMediaCard as a memory media, it takes more time to finish transferring tracks.

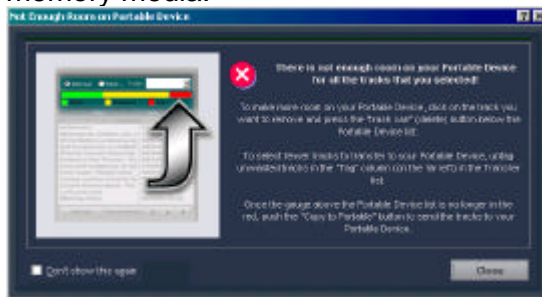
5. **Format the selected memory media if necessary (chapter 3-6).**
6. **Click on the “Clear List” button if any tracks are listed on the Transfer List.**
7. **Click on the “Select Tracks From Database” button.**
The “Select Tracks From Database” window appears.

Tip


If you have created a play list that contains the tracks selected for transfer, you can select the play list from the “Select Playlists From Database” window that can be opened by clicking on the “Select Playlists From Database” button.

8. **Select the tracks that you want to transfer to the EV-128MRS player by clicking on the box to the left of each track, then click on “OK.”**

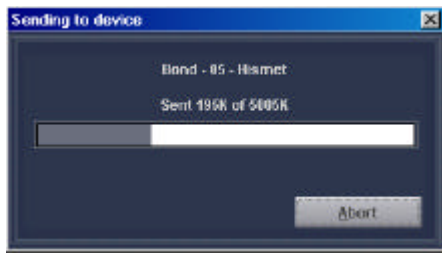
You will be notified if you have selected too many tracks for the selected memory media.



If this dialog box appears, you must delete one or more tracks from the Transfer List or Portable Track List until the total size of the selected tracks falls below the available memory of the memory media.

9. **Click on “Close” to close the dialog box.**
10. **Delete the tracks one at a time until the red porting of the Device Usage bar disappears by clicking on  after selecting the track on the Transfer List or Portable Track List.**
11. **When you are all right with your selection, click on the “Copy To Portable” button.**

Transfer of the selected tracks starts and the “Sending to device” dialog box appears, where you can see the transfer status of each track and the track title currently being transferred. On the EV-128MRS player, “NOW DOWNLOADING PLEASE WAIT” remains displayed while transfer is in progress.



Tracks are transferred to your EV-128MRS player in the order they appear on the Transfer List.

To cancel transfer, click on the “Abort” button of the dialog box.

Note

If you transfer the selected tracks to memory media that contain one or more files, transfer is not performed in the order tracks are listed. The size of each track selected is compared against that of the remaining available memory each time before starting transfer of a track, and the track the size of which best fits the remaining available memory is transferred. Transfer stops when not enough space to store any of the remaining tracks remains on the memory media.

12. Click on “OK” when the message “Finished transferring tracks” is displayed.

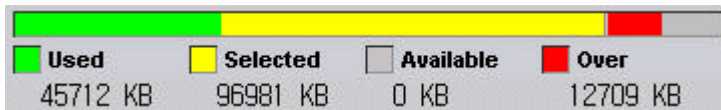
Your EV-128MRS player is now ready for playback.

Note

- The track currently being played back cannot be transferred to the EV-128MRS player.
- You are constrained to playing the tracks on the MultiMediaCard on the original EV-128MRS player that was used to transfer music files.
- Music files cannot be restored to your computer after they have been transferred to the EV-128MRS player.
- The filename extension of an MP3 file will be changed from “.mp3” to “.mpm” because of copyright protection measures after transferring it to the EV-128MRS player.
- Up to 250 music files can be transferred to the EV-128MRS player internal Flash Memory and the MultiMediaCard.

Viewing current memory usage status of the memory media

The Device Usage bar located on the right pane of the Copy to Devices window gives you color-coded representation of current memory usage status of the selected memory media.



Green

The amount of memory currently being used on the memory media

Yellow

The amount of memory necessary for transferring the selected tracks

Grey

The amount of available memory remaining after transferring the selected tracks

Red

The amount of memory shortage when all the selected tracks are transferred

Deleting tracks from the memory media

1. Click on the track that you want to delete from the Portable Track List.

2. Click on .

The selected track is deleted from the memory media.

You can also right-click on the track, then select "Remove" from the shortcut menu.

Tip

If you want to delete all the tracks from the memory media, you may use the "Format Media" button.

Increasing the number of files that can be transferred to the EV-128MRS player

You can transfer more files to the EV-128MRS player by selecting a bit rate lower than that of the tracks selected for transfer.

1. Click on "Options" of the "View" menu to open the "Options" dialog box.

2. Click on  to the right of the "Bit Rate:" field, then select a bit rate lower than that used to encode the selected tracks under the "Read CD" tab.

This causes the files to be reduced in size, resulting in increasing the number of files to be stored on the memory media.

Formatting the internal Flash Memory and MultiMediaCard

Before starting

- Formatting the memory media erases all contents stored on it.
- The following actions are strictly prohibited while formatting the memory media. Doing so may cause not only the computer to freeze up but also the memory media to be damaged.

—Disconnecting the USB cable from the EV-128MRS player or the computer

—Removing the battery from the EV-128MRS player

—Removing the MultiMediaCard from the EV-128MRS player

- Check that there is sufficient power remaining.

1. Connect the EV-128MRS player to the computer with the supplied USB cable.

If it is a MultiMediaCard that you want to format, insert it into the EV-128MRS player before connecting the EV-128MRS player to the computer.

2. Turn on the player by holding the button pressed until “CONNECT USB” appears on the display of the EV-128MRS player.

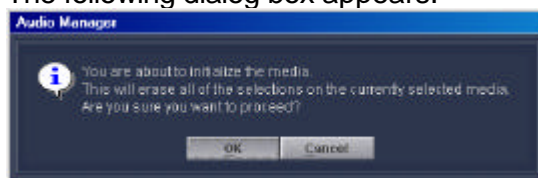
3. Double-click on the (Audio Manager) icon on the desktop.

4. Click on the “ copy to devices” button to open the Copy to Devices window if it is not already open.

5. Click on to the right of the “Media:” field and select the desired memory media “Internal Memory (Flash)” or “External Memory (MMC)” from the drop-down list.

6. Click on the “Format Media” button.

The following dialog box appears.



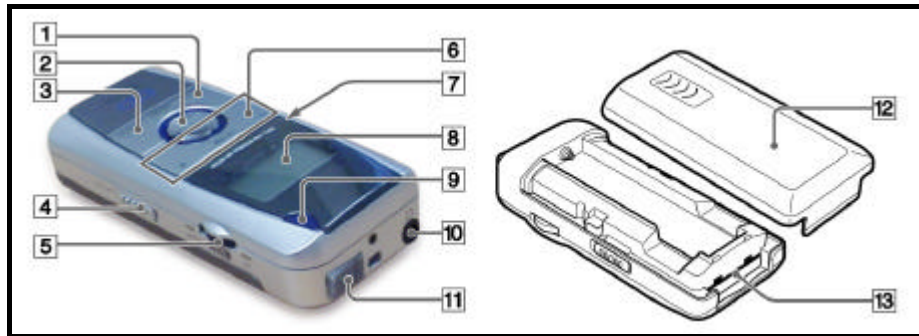
7. Click on “OK” if you are sure you want to format the selected memory media.

When “NOW FORMATTING PLEASE WAIT” changes to “FORMAT COMPLETED!” on the EV-128MRS player, formatting is completed.

Chapter 4. USING THE EV-128MRS PLAYER

1. Player overview

Main unit



1 PRESET -/AREA/PLAY MODE button

- Press during playback to select the desired play mode from among NORMAL, 1 REPEAT, ALL REPEAT, RANDOM, and **RANDOM REPEAT**.

2 ►|| (play / pause) / ■ (off) button

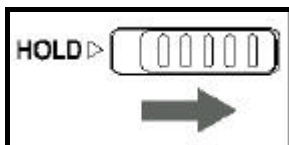
- Press and hold to turn the power on for a few seconds and start playback, or to turn the power off.

3 A→B button

- Press during playback to set **A→B** repeat playback.

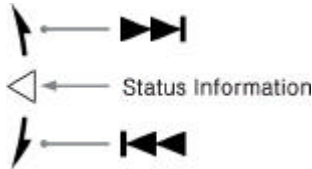
4 HOLD switch

When the player is not being used, set it to the HOLD position to prevent unintentional operation.



5 Multi Jog / Status Information

- Turn up or down during playback to skip to the beginning of the desired track.
- The sampling rate, bit rate and remaining flash memory size are displayed.

**6 VOLUME +/- button**

- Press to increase or decrease volume. Each time you press the button, volume increases or decreases by one step.
- Press and hold to continuously increase or decrease volume.
- Volume is adjusted between 0 and 20.

Note

If you adjust the volume between the level of 14 and 20, it is automatically set to 13 when you turn the power on after turning it off.

7 BASS OFF/ON button

“ON” to set the BASS sound quality.

**8 AUTO PRESET/EQ button**

- Press repeatedly during playback to select the desired EQ mode.

9 Display window**10 (Headphones) jack (stereo mini-jack)**

Used to connect the supplied headphones control.

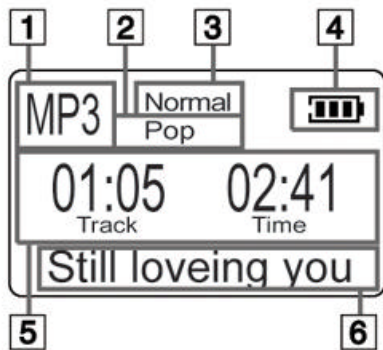
11 USB port connector

Used to connect the series B (smaller) connector of the supplied USB cable to the player and the series A (larger) connector to the USB port of your computer.

12 Battery compartment cover**13 MultiMediaCard slot**

Display window

During playback



1 **Play mode indicator**

2 **EQ indication**

3 **Repeat indication**

4 **Battery indicator**

Displays the remaining battery power.

5 **Main indication**

Displays the track number and elapsed playing time of the current track when the DISPLAY switch is set to the TIME position.

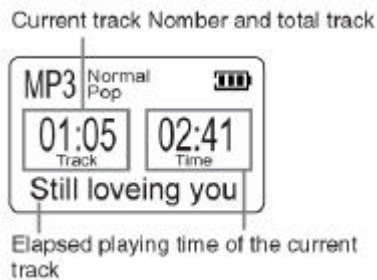
6 Displays the track title of the current track when the DISPLAY switch is set to the TITLE position.

Note

During playback of WMA files, the timer display may show irregular behavior, especially when you skip to another track.

2. Using the player

Playing back tracks



Before starting

Release the HOLD switch to activate the player buttons.

1. Connect the supplied headphones to the jack on the player.

You can connect the headphones directly to the jack as well.

2. Press and hold the ►||/■ button until "DIGITAL AUDIO" appears on the display.

Playback starts automatically from the beginning of the track that was played back last time.

3. Adjust the volume with the VOLUME + or – button.

Note

The EV-128MRS player allows you to play back up to **250 music files** that have been stored on it.

To turn the power off

Press and hold the ►||/■ button until "GOOD-BYE" appears on the display.

On the pause state, the power will be off after 4 minutes.

To put the player in playback pause

Press the ►||/■ button during playback. To resume playback, press the ►||/■ button again.

To search for a track

Turn the Multi Jog up or down repeatedly during playback or playback pause until a desired track is located.

Holding the Multi Jog up or down during the pause state will move the tracks quickly.

To search for a point of a track

During playback, hold turning up or down the Multi Jog until the desired point of the track is located.

Status Information

Pressing the Multi Jog for a seconds will display the current track information and the remaining memory.

"S/R:xxxkHz " : sample rate of the current track

"B/R:xxxkbPS" : bit rate of the current track

"F/M:xxxMB" : available memory size

Selecting a play mode

Press the PLAY MODE button repeatedly during playback to select the desired play mode.

Select	To play
Normal	All the recorded tracks in order. When you are using the player with a MultiMediaCard loaded, playback starts from the Flash Memory, and then proceeds to the MultiMediaCard after the last track in the Flash Memory ends.
1Rep	The current track repeatedly
AllRep	All recorded tracks repeatedly
Random	All recorded tracks in random order
RndRep	All recorded tracks in random order repeatedly

Playing a desired portion of a track repeatedly (A-B Repeat Playback)



1. Press the A-B button at the beginning of your desired portion during playback.

"A→" appears on the display.

2. Press the A-B button at the end of your desired portion during playback.

The player starts to play the portion between point A and B repeatedly.

To cancel A-B Repeat Playback

Press the A-B button during A-B playback.

Selecting equalizer settings to suit tracks



Press the EQ button repeatedly during playback to select your desired EQ mode from among ROCK, POP, JAZZ, and CLASSIC.

Note :

The BASS button should be "OFF" to operate "EQ"

Chapter 5. Appendix

1. Specifications

Storage media	Built-in 128MB Flash Memory MultiMediaCard slot for a removable 8MB,16MB, 32MB, 64MB MultiMediaCard
Maximum output level	5 mW + 5 mW (32 Ω)
Frequency range	20 Hz – 20 kHz
Load impedance	16 – 32 ohms
S/N ratio	85 dB
Distortion rate	0.2 or less
Power supply	1.2 V DC using the supplied MHB-901 Ni-MH rechargeable battery
Continuous playing time with a fully charged battery	Playing time will be approximately 10 hours when playing the 44kHz, 128kbps mp3 files.
Display	Graphic LCD (128 X 64 dots)
PC interface	USB cable
Maximum outside dimensions	41.6 mm(W) X 90.5 mm (H) X 22.8 mm (D) (not including projecting parts and controls)
Weight	Approx. 52g without battery
Accessories	USB cable (1) Battery charger (1) Rechargeable battery (1) Installation CD-ROM (1) Stereo headphones (1 set) Carrying case (1)

* Player specifications and external appearance are subject to change without notice.

2. Frequently asked questions

General questions

What is MP3?

MPEG-1 Audio Layer 3, one of most popular audio formats. It compresses standard audio tracks into much smaller sizes without significantly compromising sound quality. Since the MP3 file format has no mechanism for copyright protection, it is not widely used by commercial music data distribution sites.

What is WMA?

Windows Media Audio is an audio format developed by Microsoft Corporation in order to distribute CD-quality music even via low-speed communication lines such as ISDN. WMA employs a more efficient compression method than MP3, and has the advantage of reducing the bit rate with the least loss of sound quality (80 kbps encoding results in almost the same sound quality as MP3 encoded at 128 kbps).

WMA is a format suitable for portable players with limited memory. WMA also provides the mechanism that allows music files to contain encrypted data such as copyright-protection information in them in combination with Windows Media Rights Manager.

What is the bps?

Data flow per second denoted by "bps." Audio Manager allows you to select a bit rate of 160, 128, 96, 80, or 64 kbps for WMA format encoding and 320, 256, 192, 160, 128, 96, 80, or 64 kbps for MP3 format encoding.

What is a variable bit rate (VBR)?

The variable bit rate (VBR) encoding method allocates fewer bits to silent sections or those with relatively narrow stereo separation, and allocates additional bits to sections that have relatively wide stereo separation. The constant bit rate encoding method uses a consistent bit rate throughout an encoded file. VBR allows smaller encoded file sizes without compromising sound quality. However, VBR is not recommended if you want the MP3 player to report accurate information about the duration of MP3 files, since it is difficult to predict MP3 file size.

What is the CDDB?

A database server that provides information about a music CD in your computer's CD-ROM drive. CDDB-enabled encoding software will search the CDDB database on the Internet for information about your music CD, such as the album title, artist names, and track titles, and automatically enter the information to its track list. You do not have to manually enter information about your music CD.

Questions about the EV-128MRS player

How do I expand the memory?

The EV-128MRS player incorporates 128MB of Flash Memory. You can add memory by installing a MultiMediaCard (8MB, 16MB, 32MB, 64MB).

Can files on a MultiMediaCard that have been written to by an EV-128MRS player be played back on another portable player?

No, they can not be played back on another portable player.

How many minutes of music files can the EV-128MRS player hold?

It depends on the amount of installed memory and the bit rate used for encoding. If you select "96 kBit/s, Near CD, 15:1 reduction" in the "Options" dialog box for encoding WMA, the 128MB internal Flash Memory allows you to store about 182 minutes of music files. The time is reduced to about 136 minutes with the "128 kBit/s, CD Quality, 11.25:1 reduction."

How long does the battery last?

In case of playing 128kbps, 44.1kHz mp3 files, a fully charged battery gives you about 10 hours of playback time.

The volume level differs among tracks.

The volume level of the encoded music files depends on the music source and the software used for encoding.

You need to adjust the volume level manually on the player, because the encoding software usually does not support a function to adjust volume level.

Can I use the EV-128MRS player with a Macintosh computer?

No, you cannot. The EV-128MRS player does not support Macintosh computers.

3. Troubleshooting

If you encounter a problem while using the EV-128MRS player, try the remedial actions listed below. Should the problem persist, consult the store where you purchased the EV-128MRS player.

The buttons are not functional.

- Check to see if the HOLD switch is set to the HOLD position.
- Check to see if the rechargeable battery is installed properly.
Check if the + and - poles of the rechargeable battery are properly aligned.
Check to see if the rechargeable battery needs recharging.
Check to see if memory status is all right.
- Format the memory media using the format function of the supplied Audio Manager software.
- If the problem persists, remove the battery, then reinstall it to reset the player.
This often helps solve a problem.

Nothing or unusual action on the display

- Check to see if the rechargeable battery needs recharging.
- Remove the battery, then reinstall it to reset the player.
This often helps solve a problem.

Various troubles with playback

- "NO FILE" is displayed on the EV-128MRS player. You may have failed to transfer music files to the EV-128MRS player.
→ Check the USB cable connection and remaining battery power, and try to transfer music files to the EV-128MRS player again.
- Some parts of a data stream may be damaged because of power fluctuations while transferring music files.
→ Format the memory media using the format function of the supplied Audio Manager software.
- The player cannot play tracks that are stored on the MultiMediaCard.
→ Check that the MultiMediaCard has been inserted into the card slot properly.
Push the MultiMediaCard into the card slot until it is locked, holding it with the beveled corner to the right.
→ Check that you are not using a MultiMediaCard written to by another player. You can only play a MultiMediaCard on the EV-128MRS player that was used to transfer the music files.

The EV-128MRS player does not play tracks.

- The EV-128MRS player supports WMA and MP3 files encoded with one of the following bit rates and sampling frequency.
 - WMA files encoded with a bit rate of 64, 80, 96, 128, or 160 kbps and a sampling frequency of 44.1 kHz
 - MP3 files encoded with a bit rate of 64, 80, 96, 128, 160, 192, 256, or 320 kbps and a sampling frequency of 22 kHz to 48 kHzFiles other than WMA- or MP3-format files may not be played back on the EV-128MRS player even if they are transferred to the player. Even files in WMA or MP3 file format may not be played back, if they are encoded with a bit rate or sampling frequency outside the range supported by the EV-128MRS player.
 - Retransfer the files after encoding them using WMA or MP3 file format with an appropriate bit rate and sampling frequency, if possible.
- Some MP3 files that are encoded with VBR (variable bit rate) may not be played back on the EV-128MRS player.
 - Retransfer the files after encoding them with a constant bit rate.

With some files, the elapsed playing time indicated on the display is not accurate, and sound skip occurs.

- Files encoded with a bit rate or sampling frequency outside the range supported by the EV-128MRS player may cause inaccuracy of elapsed playing time indicated on the display and sound skip.
 - Retransfer the files after encoding them with an appropriate bit rate and sampling frequency.
 - * This problem may still remain with some files even if they are encoded with an appropriate bit rate and sampling frequency.
- MP3 files that are encoded with VBR (variable bit rate) also may cause inaccuracy of elapsed playing time indicated on the display and sound skip.
 - Retransfer the files after encoding them with a constant bit rate.
 - * This problem may still remain with some files even if they are encoded with a constant bit rate.

ONE HUNDRED EIGHTY DAYS LIMITED WARRANTY

MPMAN warrants that its MPMAN product, and the component parts thereof, will be free from defects in workmanship or materials for one hundred eighty days from the date of purchase by the original user, on the terms stated herein.

This warranty shall not apply to appearance or accessory items including but not limited to mechanical parts, cabinet, cabinet parts, knobs and etc.

This warranty shall, in addition, not apply to damages due to handling, transportation, unpacking, set-up, incorrect charging and battery installation, customer adjustments that are covered in the owner's manual, loss of parts, repair or replacement of parts and any other accessories supplied by other than the MPMAN authorized dealer, any malfunction or failure caused by or resulting from abnormal environmental conditions, improper unauthorized service, improper maintenance, modifications or repair by the consumer, commercial use, rental use, abuse, misuse, abnormal use, neglect, accident, fire, flood, or other Acts of God.

This warranty becomes void in the event serial numbers and bar code labels are altered, defaced or removed.

Should this product become inoperative under the circumstances warranted within the warranty period, it will be repaired or replaced at our option without charge, provided it is returned in secure packaging at freight prepaid and sent to an authorized MPMAN dealer together with a duplicated copy of the original purchase dated and store-identified sales receipt.

You must pay any initial shipping charge required to ship the product for warranty service by way of traceable carrier or first class mail to avoid loss in transit to MPMAN, but the return charges will be at our expense if the product is repaired or replaced under warranty.

How to get prompt and efficient service? You must pack in a strong carton and pad tightly to avoid damage. Damage in transit is not covered by warranty. If possible, use the original packing material. On the carton, carefully print the name and address of MPMAN. Do not forget to include your return address. Enclose this completed warranty registration form. Indicate as clearly as possible, the nature of defect. A defective product will not be repaired or replaced unless this warranty registration form and a duplicated copy of sales receipt accompanies the product at the time of shipment for repair or replacement.

This warranty is the purchaser's sole and exclusive warranty and is in lieu of all other warranties, including any warranty of merchantability or fitness for a particular purpose. There are no other warranties or conditions, expressed or implied, statutory or otherwise. MPMAN neither assumes nor authorizes any person to assume for it any other obligation or liability in connection with the sale or service of the product.

MPMAN's obligation under this warranty shall be limited to the repair, including all

EV-128MRS User' s Guide

necessary parts and the cost of the labour connected therewith, or at our option, the exchange of the product.

In no event, shall MPMAN's liability exceed the purchase price paid by the purchaser for the product.

Replacement parts, furnished in connection with this warranty shall be warranted for a period equal to the unexpired portion of original product warranty.

The repair or replacement, at MPMAN's option, shall constitute purchaser's sole and exclusive remedy and MPMAN's only liability to the purchaser. MPMAN reserves the right to replace any discontinued product with one of equal value.

Except for the obligations specifically set forth in this warranty statement. In no event, shall MPMAN be liable for any special, exemplary, direct, indirect, incidental, or consequential damages under any circumstances and any delay in the performance of this warranty due to cause beyond our control, whether such liability is based on contract, tort, strict liability, and any other legal theory or otherwise.

The purchaser may have other rights under existing state(provincial) or federal laws and where any terms of this warranty are prohibited by such laws on how long an implied warranty lasts and/or exclusion or limitation of incidental or consequential damages; the above limitations may not apply to you but the remainder of this warranty shall remain in effect.

WARRANTY REGISTRATION FORM

Owner's name and address:

First name: _____ Initial: _____ Last Name: _____

Address: street _____ Apt.No.: # _____ City: _____

State (Province): _____ Country: _____ Zip code: _____

Phone Number: _____ E-mail address: _____

Dealer(store)'s name and address(where purchased): _____

Purchase date: _____ Expiry date: _____

Product name: _____ Model No.: _____

Serial No. _____ Nature of defect: _____

(For official use)

Repaired (Replaced) at: _____

Date: _____



/
: 080-567-3131 / 080-466-7626

<http://www.nowevolution.com>

()135-798

159-1

2



P/N : 390-710015-010