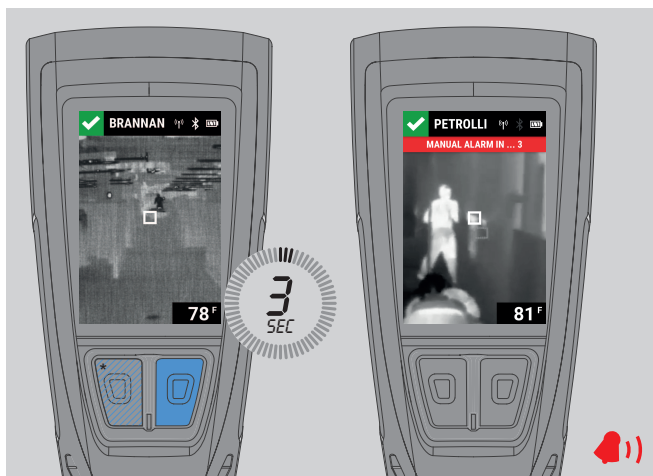


4.0.5 Activating an Alarm



Long press the **Down** or **Enter** button. The alarm sounds.

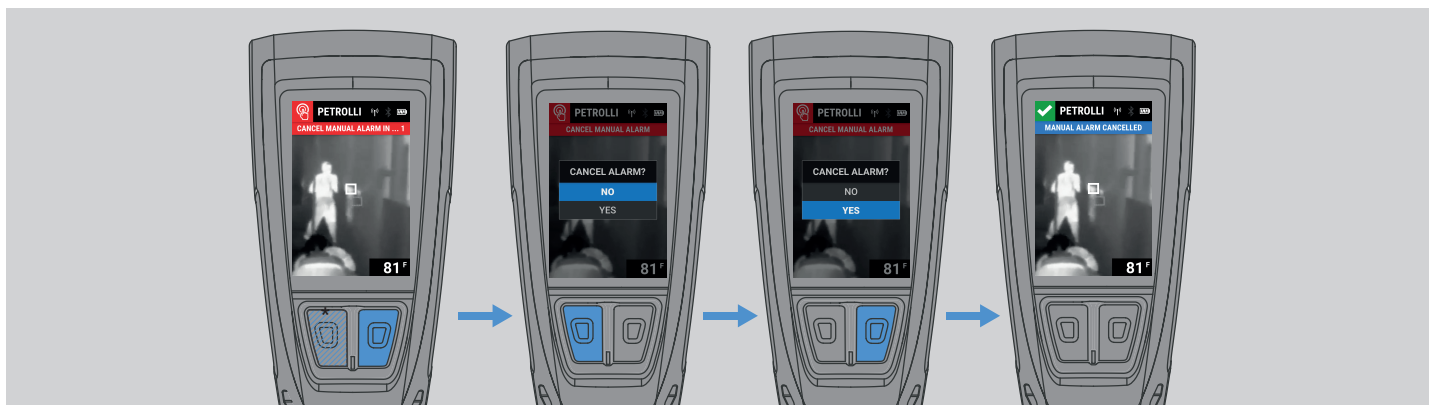
NOTE: If the button(s) is released before the ~~three-second~~ countdown ends, the alarm is not activated.

4.0.6 Cancelling an Alarm

Long press the **Down** or **Enter** button.

NOTE: ~~If the button is released before the three-second countdown ends, the alarm does not turn off.~~

(1) ~~Select **YES** in the the **CANCEL ALARM** dialog box. The alarm is cancelled.~~



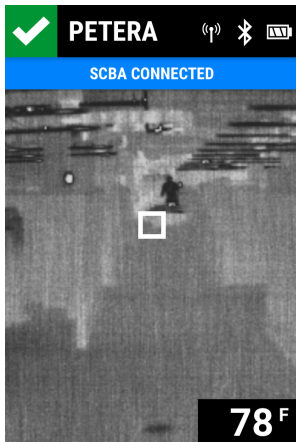
4.0.7 Pairing with an External Device

Pairing can be established with external devices using the RFID tag in LUNAR.



- (1) Ensure the external device is in *Data Link Mode*, or *Pairing Mode*.
- (2) Touch the RFID tag on LUNAR to the external device.
- (3) [Scroll through the TIC palettes](#) until the Status screen is displayed.

Successful Connection Pairing



Connection Established and then Lost No Pairing

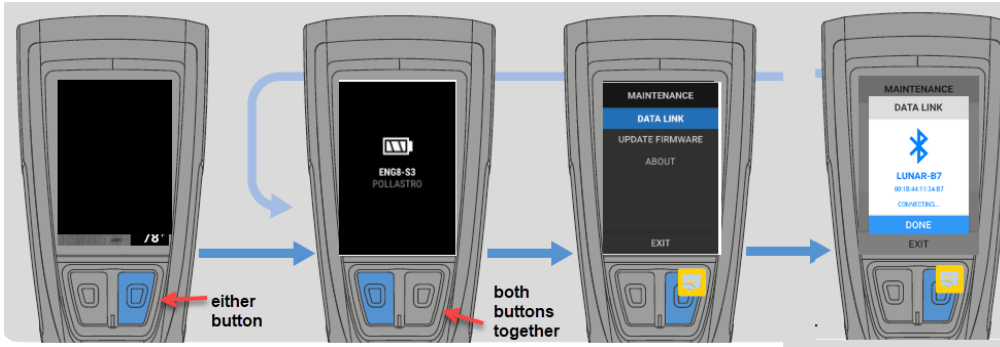


4.1 Configuring and Maintaining

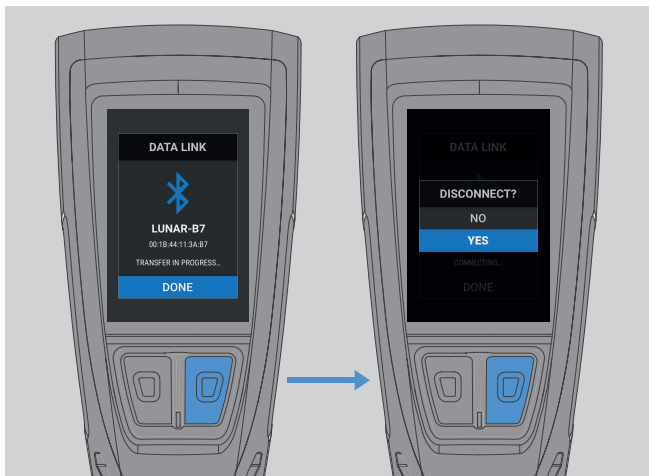
4.1.1 Connecting to FireGrid Configure

LUNAR can be configured to ~~automatically~~ connect with FireGrid **Configure**, making it discoverable for communication with FireGrid ~~and connected devices~~.

- (1) With LUNAR powered off, [start a Quick Check](#).
- (2) Open the [Maintenance menu](#).
- (3) Select **DATA LINK**. LUNAR attempts to connect with FireGrid Configure.

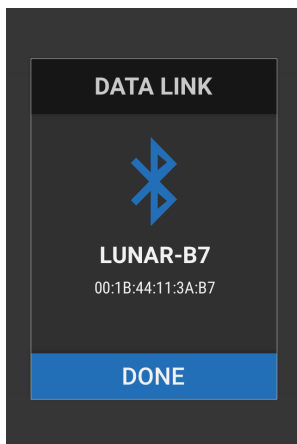


Connection in Progress ~~Successful Pairing~~



- (1) Select **DONE**.
- (2) In the **DISCONNECT** dialog box, select **YES** to disconnect or **NO** to remain **paired**.

Not Actively Transferring Data ~~No Pairing~~



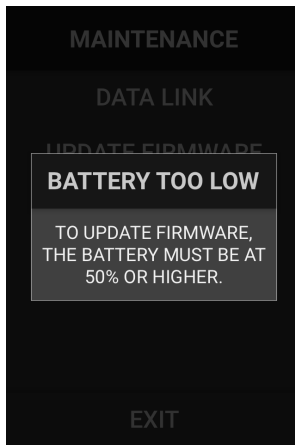
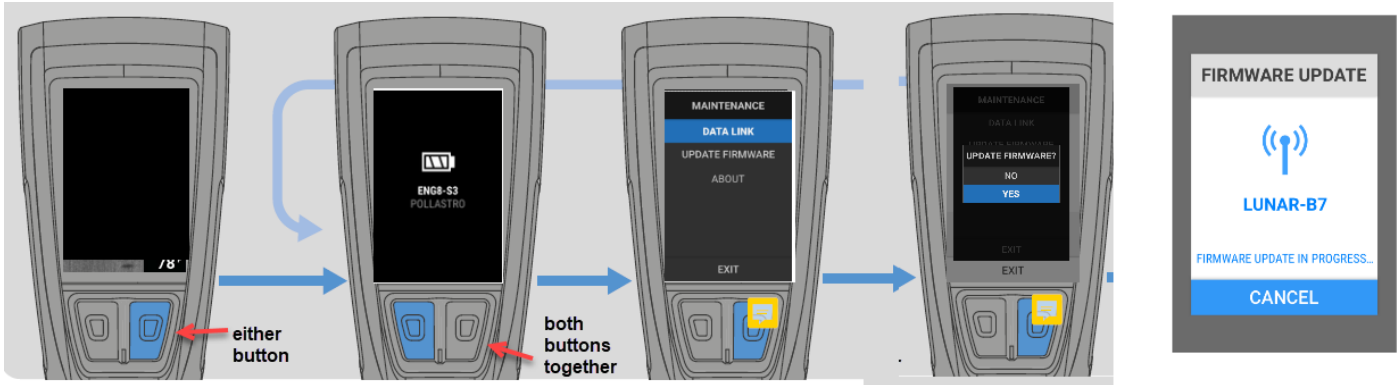
4.1.2 Updating Firmware ~~Software~~

If a firmware update is available, it can be installed from the Maintenance menu. **This applies to LTE only.**

- (1) Open the [Maintenance menu](#).

- (2) Select **UPDATE FIRMWARE**.
- (3) Select **YES** to confirm the update.

To cancel the update, select **CANCEL**.



NOTE: To update the firmware, the battery level must be at 50% or higher.

4.1.3 Charging the Battery

There are two ways to charge the LUNAR battery:

- (1) Using the Single Point Charger