

### Tethering LUNAR to an M1 SCBA



- (1) Identify the M1 SCBA shoulder strap webbing loop (09). It sits on the User's right-hand side, one loop above the strap adjustment.



- (2) Slide the webbing loop (09) between the gap in the Split D-ring (01) until half of the webbing is within the Split D-ring and half of the webbing is underneath it.



- (3) With your right hand, grip the Retractor (02) and pull forcefully to the User's right. With your left, fold the webbing loop (09) under the Split D-ring (01) until it is able to slide between the gap and within the Split D-ring. Note that the stitching on these loops is robust and can handle the amount of force required.



- (4) Flatten out the webbing loop (09) once it is fully contained within the Split-D ring.



- (5) Attach the Retractor (02) to the bottom of LUNAR:
  - a) Push and hold in the Retractor's Swivel Button (04).
  - b) Insert the Swivel End (05) into the bottom of LUNAR.

### Orienting LUNAR



The LUNAR device's directional search antenna is aligned with the axis of the device. The device has an intuitive alignment design and a directional antenna in the center of the Thermal Imaging Camera (TIC) Display.

The directional search signal you receive is the signal from the area shown in the thermal image. Look through the Display to search. The directional antenna remains in the center of the line of vision to help determine optimal orientation.

## 4.0.2 Powering On and Off

### Powering On



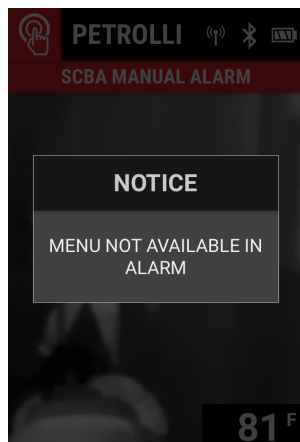
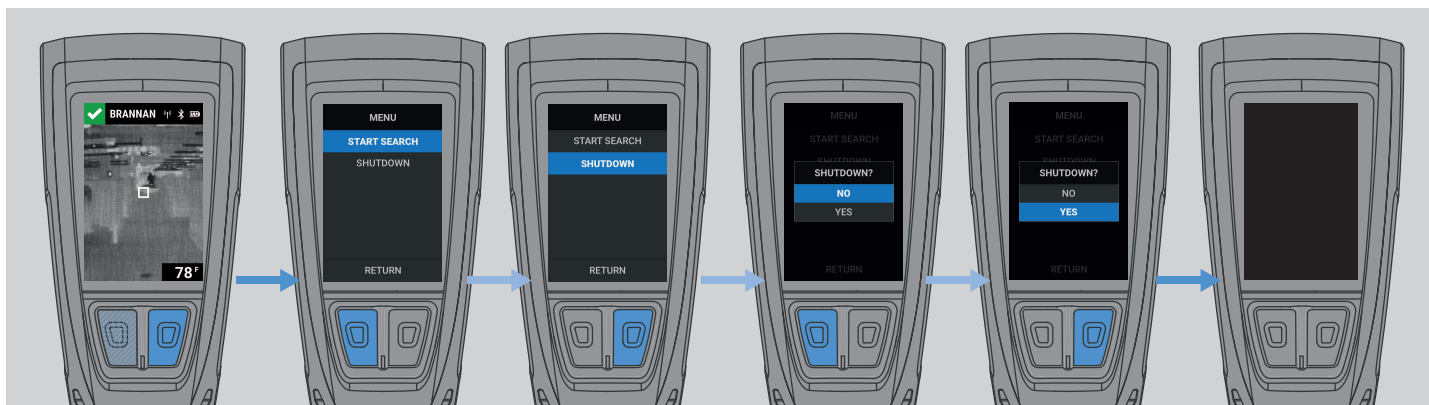
Long p Press the **Down** or **Enter** button.

**NOTE:** Installing a charged battery also powers on the device. See "Installing and Removing the Battery" on page 28.

**NOTE:** Attempting to power on a LUNAR device with a low battery level results in a flashing Low Battery icon, and LUNAR shuts down. See "Charging the Battery" on page 27.

### Powering Off

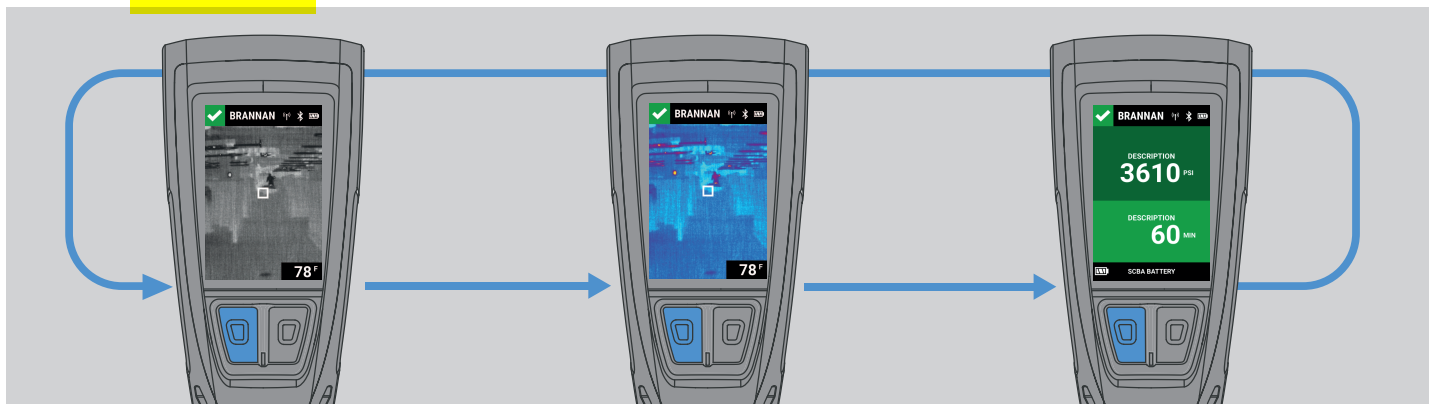
- (1) Open the [Main menu](#).
- (2) Select **SHUTDOWN**.
- (3) Select **YES** to confirm shutdown.



**NOTE:** LUNAR cannot be powered off or enter *Search* mode during a Manual, or Motion or Hardware alarm.

### 4.0.3 TIC Display and Connected Device Status











The Thermal Imaging Camera (TIC) Display is the default LUNAR screen. From this screen, the configured TIC palettes can be scrolled by pressing the **Down** button. If LUNAR is connected to bluetooth with FireGrid Configure and paired with an external device, the status of the connected device can also be viewed.



**NOTE:** If LUNAR is not connected to with bluetooth FireGrid Configure or if the connection is lost, the Status screen will not be available.

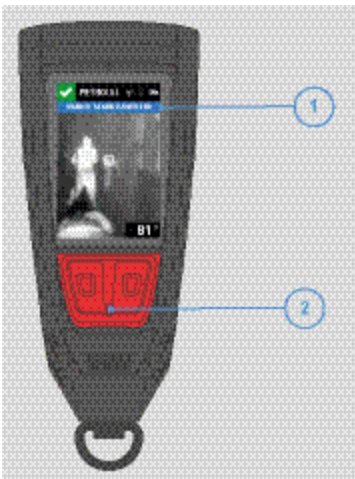
#### Status Icons

Icon	Description
	Normal
	Normal <del>Alert</del> Network with Search Disabled
	Search Mode
	Low Battery Alarm
	Manual Alarm
	Evacuation Alarm
	Hardware Alarm
	Motion Alarm
	Low Pressure Alarm
	PAR Check

Icon	Description
	Strong LTE Connection
	Moderate LTE Connection
	Weak LTE Connection
	No LTE Connection
	Battery Level at 100%-75%
	Battery Level at 75%-50%
	Battery Level at 50%-25%
	Battery Level at 25%-0%
	Bluetooth Connection On
	Bluetooth Connection Off

### Notification Banner

Notifications and alarms are displayed in the notification banner (01). The notification type determines the color of the banner along with the LED (02) color and behavior.



## (01) Notification Banner Color

 Notifications


 Alarms

## (02) LED

 Normal operation

 FireGrid Connect

 Alarm

 Another User is in an alarm state

## Notification Types

No LTE Connection

Motion Pre-Alarm

Target Signal Lost

Manual Alarm Cancelled

External Device Connected

External Device Connection Lost

PAR Check

PAR Check Acknowledged

Evacuate

Firefighter Alarm

## Alarm Types

Alarms are displayed in order of priority. The notification banner for an alarm with a higher priority replaces the notification banner for an active, lower priority alarm.

Alarm Type	Priority	Notes
Hardware Alarm	1	
Motion Alarm	2	<p><del>If an Evacuate notification is received and a Motion alarm begins or is already active, the alarm must be canceled in order to acknowledge the notification. See "Cancelling an Alarm" on page 24.</del></p> <p>A search cannot be started and LUNAR cannot be powered off once a Motion alarm is activated.</p>
Manual Alarm	3	<p><del>If an Evacuate notification is received and a Manual alarm begins or is already active, the alarm must be canceled in order to acknowledge the notification. See "Cancelling an Alarm" on page 24.</del></p>
Device Low Pressure Alarm	4	
Low Battery Warning	5	

**NOTE:** If there are one or more active alarms on the device or if a PAR Check is active, notifications can still be received. The red alarm notification banner is briefly replaced with the blue notification banner.

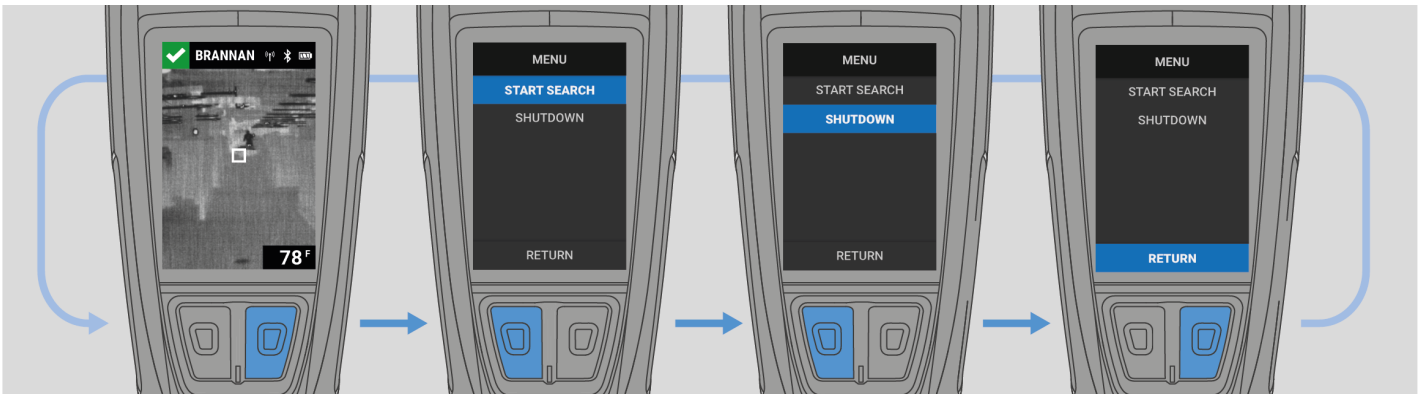
## 4.0.4 Menus

## Main Menu

To open the Main menu from the [Display](#), press the **Enter** button.

From the Main menu, the User can:

- [start a search](#)
- [power off the LUNAR device](#)



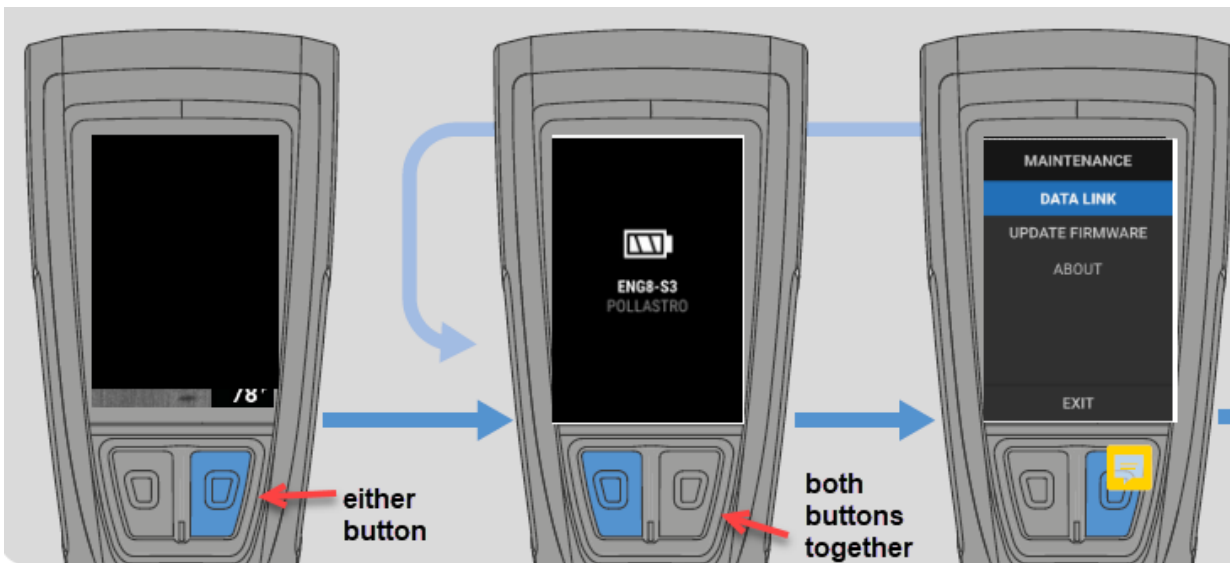
### Maintenance Menu

To open the Maintenance menu:

- (1) With the power off, press the **Down** or **Enter** button to [activate a Quick Check](#).
- (2) Long press both buttons together.

From the Maintenance menu, the User can:

- [connect LUNAR with FireGrid Configure](#)
- [update firmware software](#)
- [view device information](#)



UPDATED IMAGE NEEDED