

## NEXDISK (PSD-56P) Manual

### Index

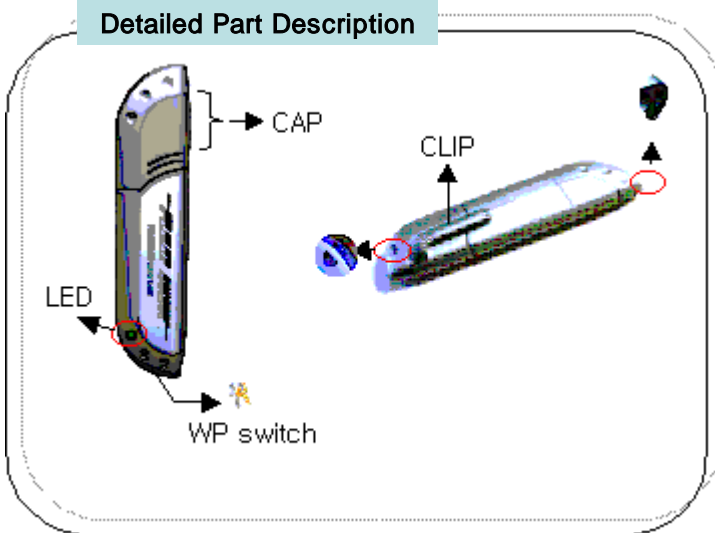
- Product Materials and Detailed Part Description
- Product Features
- Product Specification
- Product Installation
- Program Use
- Product Usage
- Caution
- Product Warranty
- FCC Warning Statement


### Product Materials and Detailed Part Description

#### Product Components

- NEXDISK
- USB Extension Cable
- Portable Neck Strap
- Application CD
- User Manual

#### Detailed Part Description



1. Write Protect Switch: To prevent NEXDISK to write, switch to .
2. Portable Neck Strap: NEXDISK Portable Neck Strap hook.
3. Pocket Clip: To securely clip to pocket or backpack, etc.
4. CAP : To protect USB connection head.
5. LED Indicator (Red) : Lit when NEXDISK is connected to PC or in activity.

## Product Features

### ■ Driver not necessary

NEXDISK can Plug & Play without any software.

(However, Windows 98 requires specific driver that is provided by JUNGSOFT)

### ■ Power Adapter not necessary

By using USB BUS Power NEXDISK does not need extra power source.

### ■ Bootable Media

Just like making Floppy into bootable diskette, NEXDISK is able to make itself a bootable media. Like FDD, CDR, HDD is independently capable of booting the system.

(\*Motherboard that supports USB booting)

### ■ Write Protect Switch

User is able to read the contents of the disk, however, is prohibited from unauthorized writing or misuse.

### ■ Software Security (PASSWORD)

NEXDISK has ability to lock itself with password. Competitor products require other media such as Floppy or CD to unlock device, however, NEXDISK is already installed with software that handles this capability and therefore does not require extra media.

### ■ LED

Indicate power going through the USB disk and monitor activity of the disk.

## Product Specification

<b>Product Code</b>	PSD-56P
<b>Interface</b>	USB 1.1
<b>Data Transfer Rate</b>	Write : 900 KB/Sec    Ready : 600 KB/Sec
<b>Size</b>	80 * 20 * 9.5mm( Cap included ) 70 * 20 * 9.5mm ( Cap Excluded )
<b>Weight</b>	15g
<b>Power</b>	USB bus power
<b>O.S Support</b>	MS-DOS, Windows 98SE/Me/2000/XP or higher, Mac 9.0 or higher, Linux2.4.0 or higher, WinCE3.0 or higher
<b>Application</b>	Desktop PC, Notebook PC, PDA etc, All PCs that support USB
<b>Standard Certification</b>	
<b>Operating Environment</b>	Operating Temp: 0 ° c or higher Maintained Temp : -20 ° c    80 ° c Maintained Humidity : 5%    90%

## Product Installation

### 1. Hardware Installation

- A. Connect NEXDISK to PC.
- B. Connect extended USB cable to PC and connect NEXDISK through it.
- C. Comes up in My Computer as Removable Media.

[Caution] In encrypted password mode contents of the information does not appear.

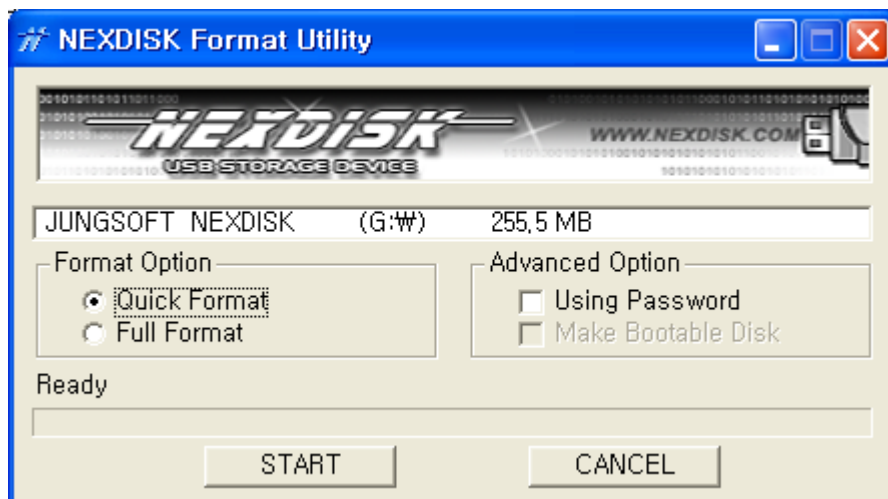
### 2. Installing Driver( For Windows98 Users Only)

- A. Other OS do not need installation drivers.
- B. Installation with Installation CD or Download from our Website ([www.jungsoftusa.com](http://www.jungsoftusa.com))
- C. Select “\DRIVER98\FREEDIK.INF” and install.

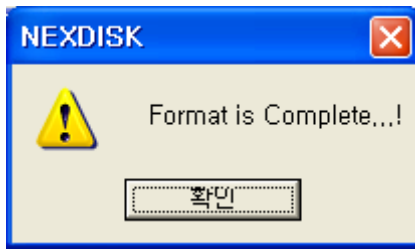
## Program Use

### 1. Format & Mode Selection Program

- All contents of the information is formatted and initialized.
- A. Connect NEXDISK to USB Port.
- B. Run “NEXDISK.exe” in installation CD.
- C. In order to use Password Lock Mode check “Password Mode” or else leave the check box empty.
- D. In order to use Bootable Media option, check “Make Bootable Media”
- E. Select Format type. “Quick Format”, “Format”
- F. When you press “Start”, Format is initiated. Indicated below is progress of the format.



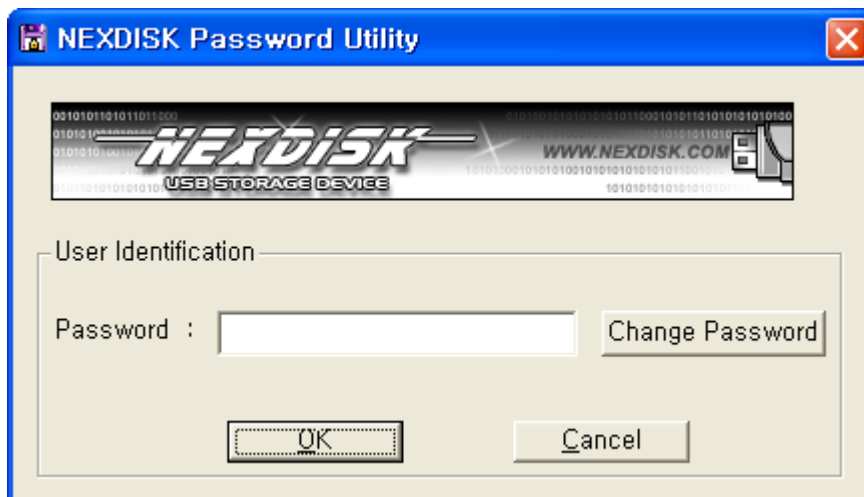
G. When format is completed the following window appears.



[Caution] Bootable Media selection is only available in Windows 98 or ME.

## 2. To Disable Password Lock

- A. In order to access NEXDISK that has a password lock mode enabled  
Use program "NEXPASS.exe" and input password.
- B. Default password is "Empty space(Enter)". Password can be up to  
10 alphanumeric characters.



C. After password is input, NEXDISK is enabled for use.

[Caution] Please do not forget your password. Only people that have the password can use the media.

## Product Usage

### 1 Typical Usage

- A. Use just like a regular Hard Disk.

### 2. Booting Mode Option

- A. Configure CMOS Setup, 1<sup>ST</sup> BOOT DEVICE to be USB ZIP.
- B. When system is rebooted computer will boot from USB.

### 3. NEXDISK Usage in MS-DOS

- A. After copying MS-DOS boot files to the NEXDISK and boots from it, user is able to access contents of the files from A:\ prompt.

### Caution

## 1. Things that you need to remember while using NEXDISK

- A. If you remove NEXDISK while the LED indicator is red, data might be lost or corrupted.
- B. It is impossible to use NEXDISK again if you lose your password, so please take caution not to forget passwords.
- C. JUNGSOFT is not responsible for lost data even if product is defective.  
Please test the product initially.

## 2. Service

- A. After purchase, Jungsoft will provide users with one year of tech support and product replacement. However, mis-use of the product or damage caused by natural disaster will not be covered and users will be charged.
- B. Damage caused by impact, water, and disassembly of the product is not covered by the service.

## Product Warranty

**Product Name :**

Purchase Date :	Year	Month	Day
-----------------	------	-------	-----

Name : TEL :

**Address :**

Store Location : TEL :

## FCC Compliance Statements

**NOTE :** This equipment has been tested and found to comply with the limits for a Class B digital device, pursuant to part 15 of the FCC Rules. These limits are designed to provide reasonable protection against harmful interference in a residential installation. This equipment generates, uses and can radiate radio frequency energy and, if not installed and used in accordance with the instruction, may cause harmful interference to radio communication. However, there is no guarantee that interference will not occur in a particular installation. If this equipment does cause harmful interference to radio or television reception, which can be determined by turning the equipment off and on. The user is encouraged to try to correct the interference by one or more of the following measures:

- Reorient or relocate the receiving antenna
- Increase the separation between the equipment and receiver.
- Connect the equipment into an outlet on a circuit different from that to which the receiver is connected.
- Consult the dealer or an experienced radio / TV technician for help.

**Warning :** You are cautioned that any change or modifications to the equipment not expressly approved by the party responsible for compliance could void your authority to operate such equipment.