

ID & Password for Setup



When you setup, you need password to proceed further.



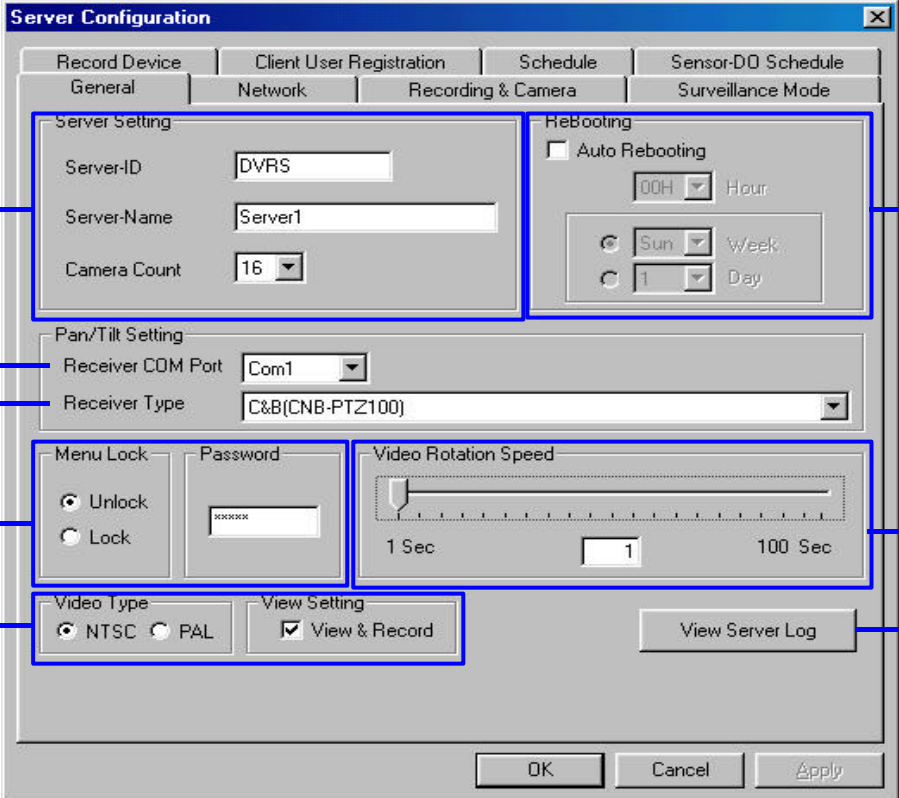
When "Menu Lock" is set to "Lock" as picture below, operator cannot control any functions on DVR screen. Operator must enter "Configuration Menu" to unlock the system.



Password can be changed in the "**Basic Configuration**" section.

page 41

Basic Configuration



The screenshot shows the 'Server Configuration' window with the following settings highlighted by blue lines:

- Server Setting:** Server-ID (DVR5), Server-Name (Server1), Camera Count (16).
- Rebooting:** Auto Rebooting (unchecked), 00H Hour, Sun Week, 1 Day.
- Pan/Tilt Setting:** Receiver COM Port (Com1), Receiver Type (C&B(CNB-PTZ100)).
- Menu Lock/Password:** Unlock (selected), Password field (XXXXXX).
- Video Rotation Speed:** Slider set to 1 second.
- Video Type:** NTSC (selected), PAL (unchecked).
- View Setting:** View & Record (checked).
- View Server Log:** Button.

Server Information : Server ID, Server Name, Number of Recording Cameras.
(You should reboot the program after changing this number.)

Auto Rebooting Option : Reboot everyday at selected time. (Hours and Minutes)

Pan/Tilt Receiver Com Port Selection

Pan/Tilt Receiver Brand Selection

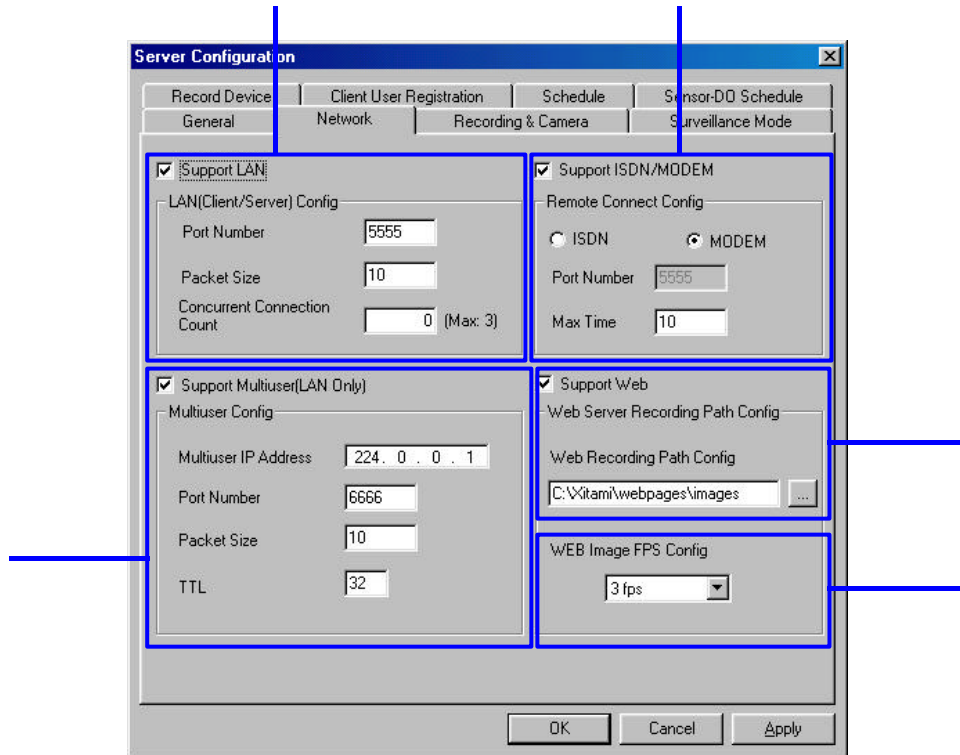
Menu Lock/Password : (Default is no password.)

Period of time in second for “**Alternating channel display**” function in Page35.

Video Format Selection (NTSC : USA, Japan, Korea, etc / PAL : Europe, China, South America)

Server Log File Check (Log-in/out time, Log-in time & IP address of Remote users can be checked.)

Network Setup



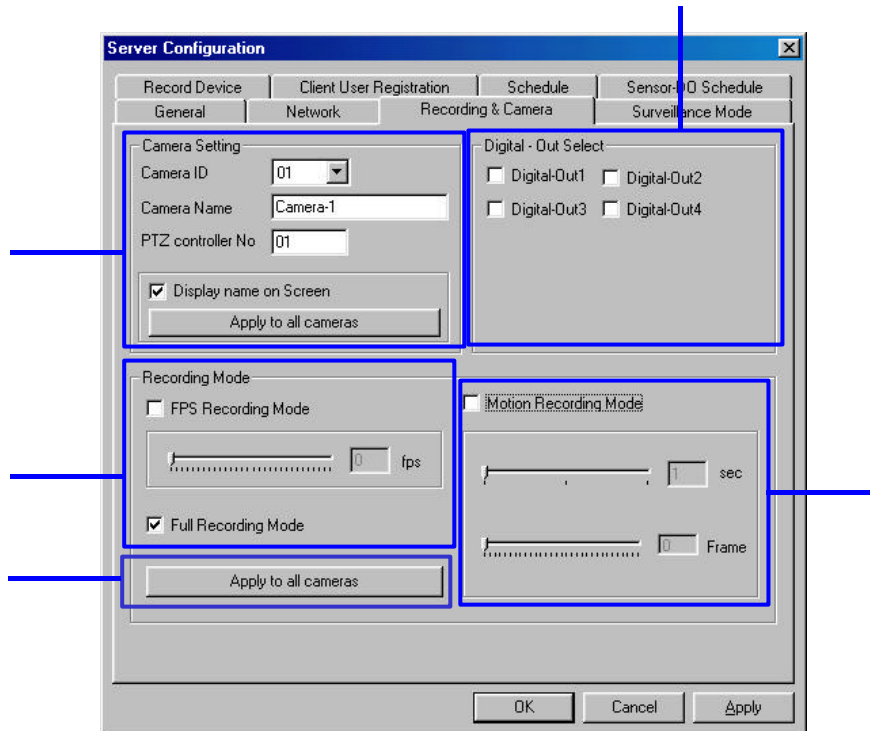
LAN support check box, Port number, Number of Multi-user(Max:3), Packet size
MODEM, ISDN Setup support check box, ISDN&Modem selection, delay time of connection

Web support check box (Optional for client PC, page 62)

Multicasting LAN support check box, IP address, Port number, Packet size,
TTL(Max: 255) : The multicasting router is needed.

WEB image FPS configuration can setup 1 frame/sec to 20 frames/sec

Setup of Recording Cameras



Camera Setup : Camera ID, Camera Name for Recording, Receiver ID for the Pan/Tilted Camera and Camera Name Prompt with the Global Apply Button.

Setup of Digital-Out at Motion detection : If motion is detected, digital output is provided.

Recording mode selection : Full Recording Mode and FPS(Frames Per Second) Recording Mode. Detection Mode and the FPS Selection Mode can be checked simultaneously. You can have recording of preset FPS mode in the normal situation but you can also have full recording mode when motion is detected., the full recording mode starts for the preset period of time.

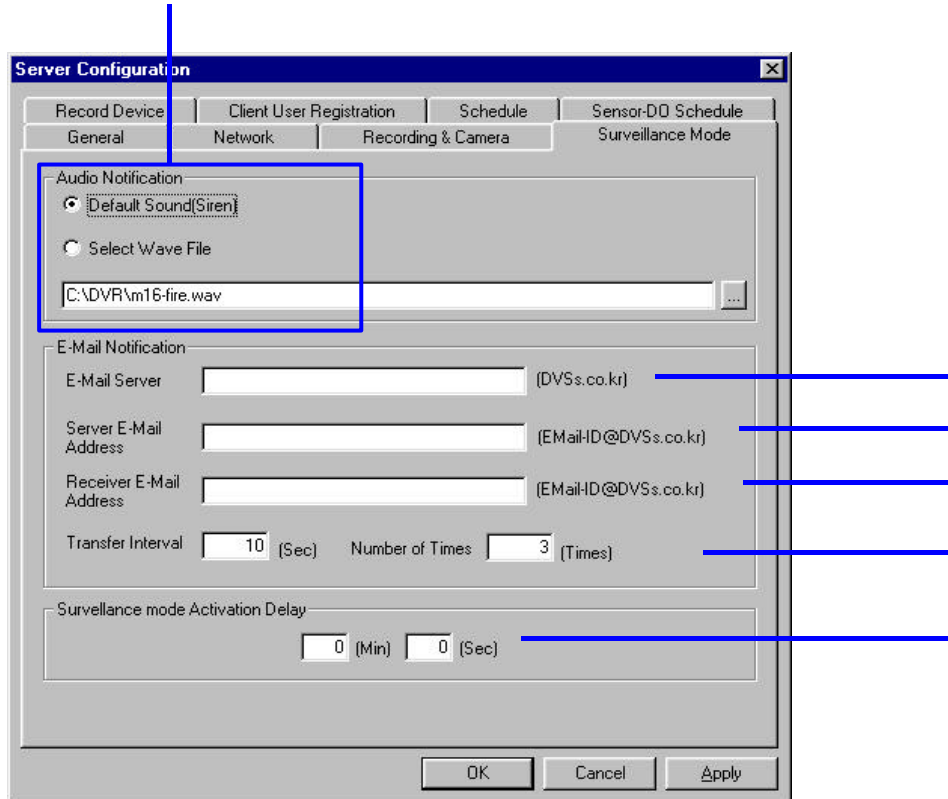
Global Apply Button

Motion Recording Mode : sets up for motion detection and can be configured to various rate per seconds or frames.



FPS Recording Mode is to record in preset frames per second (FPS). By doing this you can select quality of the recording.

Surveillance Mode Setup



The screenshot shows the 'Server Configuration' dialog box with the 'Surveillance Mode' tab selected. The 'Audio Notification' section is highlighted with a blue box. Below the dialog, blue lines point from text labels to specific fields in the dialog:

- Line 1 points to the 'Default Sound(Siren)' radio button.
- Line 2 points to the 'Select Wave File' radio button.
- Line 3 points to the 'C:\DVR\m16-fire.wav' text field.
- Line 4 points to the 'E-Mail Server' text field.
- Line 5 points to the 'Server E-Mail Address' text field.
- Line 6 points to the 'Receiver E-Mail Address' text field.
- Line 7 points to the 'Transfer Interval' text field (value 10).
- Line 8 points to the 'Number of Times' text field (value 3).
- Line 9 points to the 'Surveillance mode Activation Delay' section, specifically the '0 (Min)' field.

Sound options for Motion Detection : Siren or Sound File

URL of the E-mail Server for the Alarm to be sent.

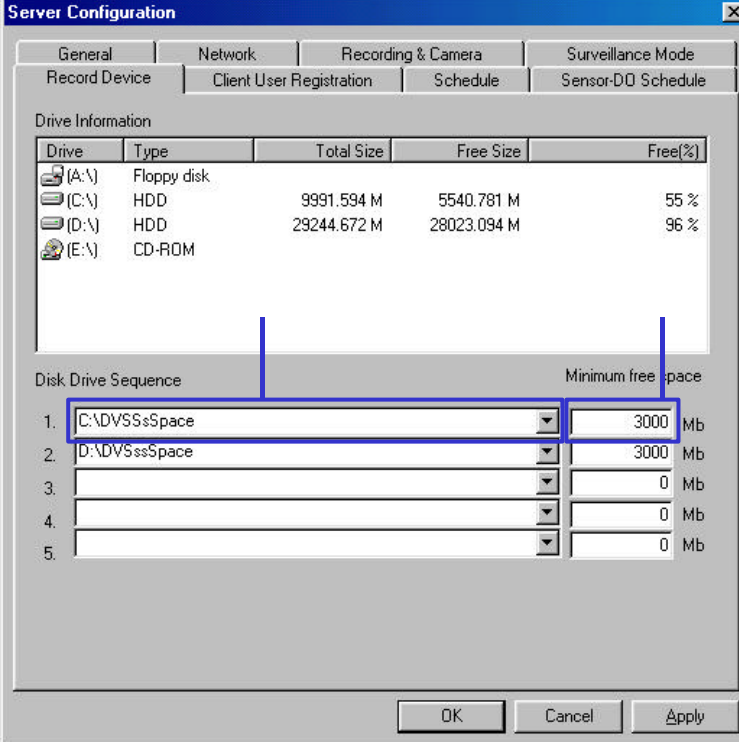
E-mail ID of the Email Server

E-mail ID of the Email Receiver

E-mailing Time Interval and Iteration, in seconds and in number.

Delay time after Motion Detection, in minutes and seconds

Setup of Storage Drives



The **Server Configuration** window is shown with the **Recording & Camera** tab selected. The **Record Device** sub-tab is active, displaying drive information and a disk drive sequence configuration.

Drive Information

Drive	Type	Total Size	Free Size	Free(%)
(A:\)	Floppy disk			
(C:\)	HDD	9991.594 M	5540.781 M	55 %
(D:\)	HDD	29244.672 M	28023.094 M	96 %
(E:\)	CD-ROM			

Disk Drive Sequence

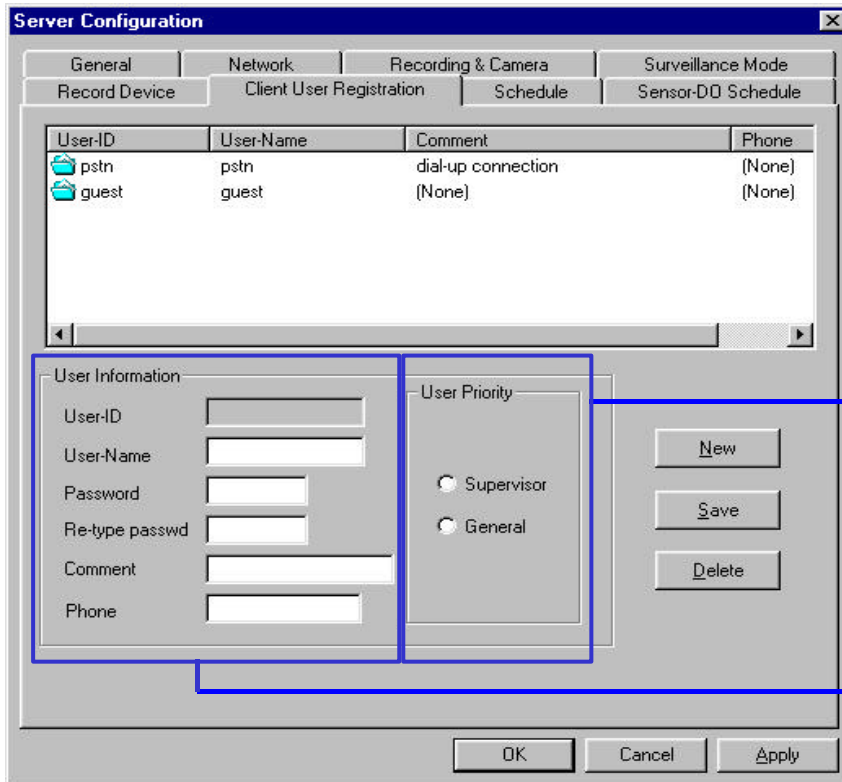
Sequence	Drive	Minimum free space
1.	C:\DVSSsSpace	3000 Mb
2.	D:\DVSSsSpace	3000 Mb
3.		0 Mb
4.		0 Mb
5.		0 Mb

Buttons: OK, Cancel, Apply

Select Directory for Recording Storage

Minimum Storage Capacity not allocated for Recording
(Default: 3000 Mbytes)

Registration of Users



Server Configuration

General | Network | Recording & Camera | Surveillance Mode

Record Device | **Client User Registration** | Schedule | Sensor-DO Schedule

User-ID	User-Name	Comment	Phone
pstn	pstn	dial-up connection	(None)
guest	guest	(None)	(None)

User Information

User-ID:
User-Name:
Password:
Re-type passwd:
Comment:
Phone:

User Priority

☐ Supervisor
☐ General

New Save Delete

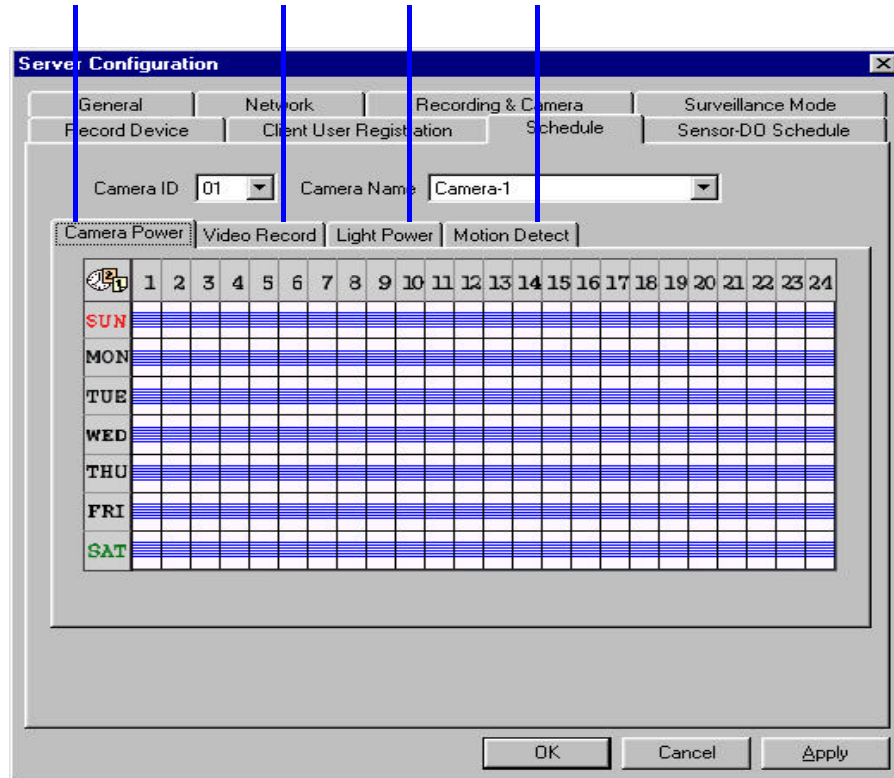
OK Cancel Apply

Access Level Setup (need Supervisor Level for Remote Control of the System : You can click the right mouse button on the active window to see the controllable menu.)

Registration for the Remote Access

- ID & Password for the Remote Access

Scheduling of Recording Cameras



Camera Power : Setup for Camera On/Off Time

Video Record : Recording Schedule Setup for each Camera

Light Power : Setup for Receiver(RX) On/Off Time

Motion Detect : Setup Time for Motion Detection



Schedule setup method

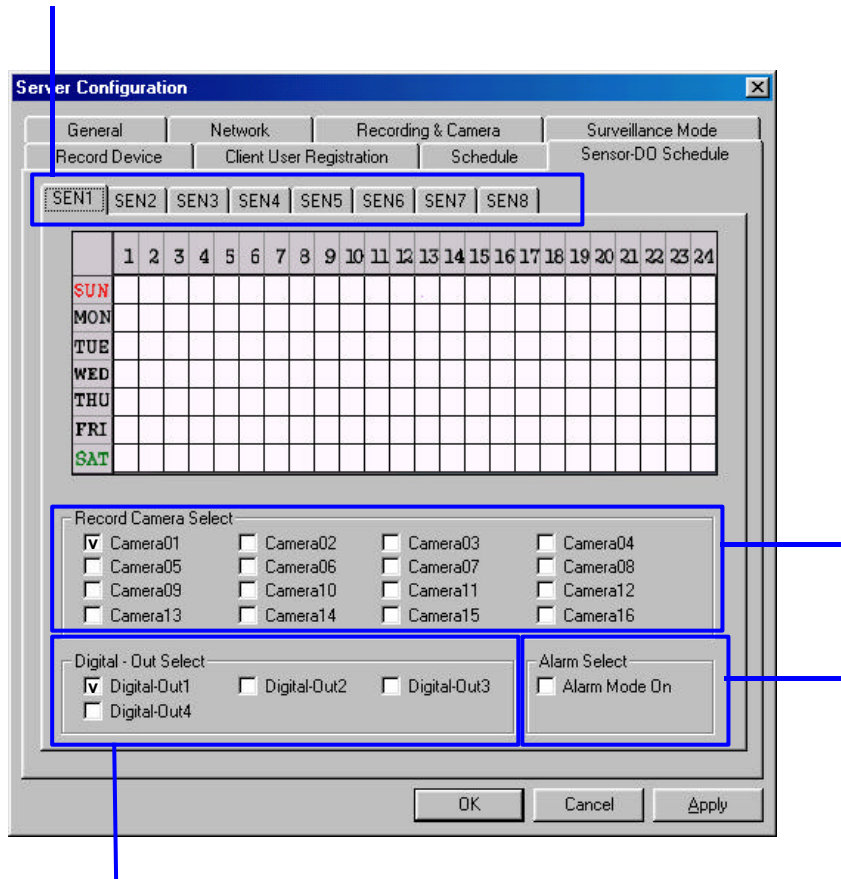
Schedule on Click the **left** button of the mouse and drag over the period

Schedule off Click the **right** button of the mouse and drag over the period



When you schedule a camera in , you should schedule every camera. The unscheduled camera will not record.

Scheduling of Sensors



Schedule setup for each sensor

Select camera to link the sensor

Select Alarm mode on sensor detecting. If checked, the sensor detection triggers the “Motion Detection Mode” automatically.

Select Digital Out port on sensor detecting

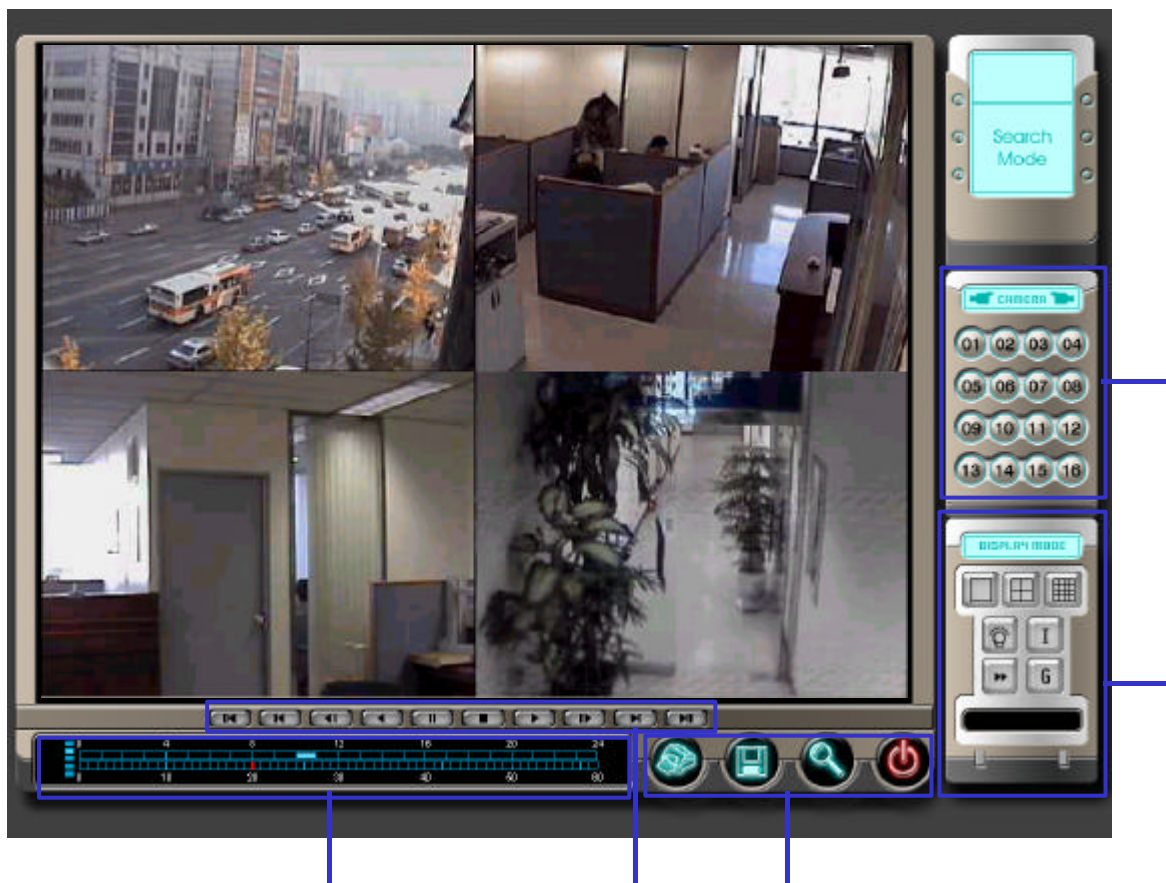


Example : the status of the above figure

When the sensor#1 detects, the camera#1 records and the output will be ported through the digital out#1. This setup is good through 0AM to 8AM and 9PM to 24PM everyday.



Searching the Recorded Images



Search channel selection button.

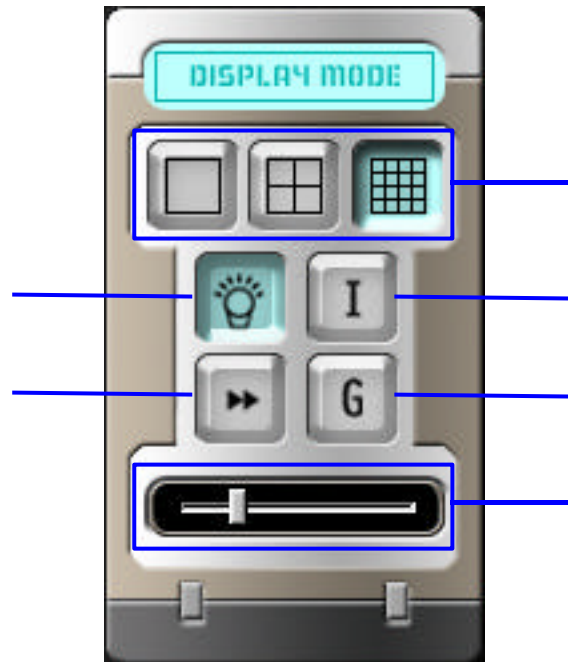
Channel play mode page 53

Printing, AVI file backup, search, exit buttons. page 59~60

Search playing options page 54

Recorded time spans are marked by red bar. You can move to that time by clicking the yellow bar. page 55

Channel Play Mode



Displays various display mode as button shown.

Brightness button.

Sharpness button.

Display speed button.







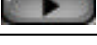
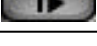
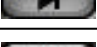
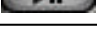
Gray scale display button.

Adjustment bar for button ~

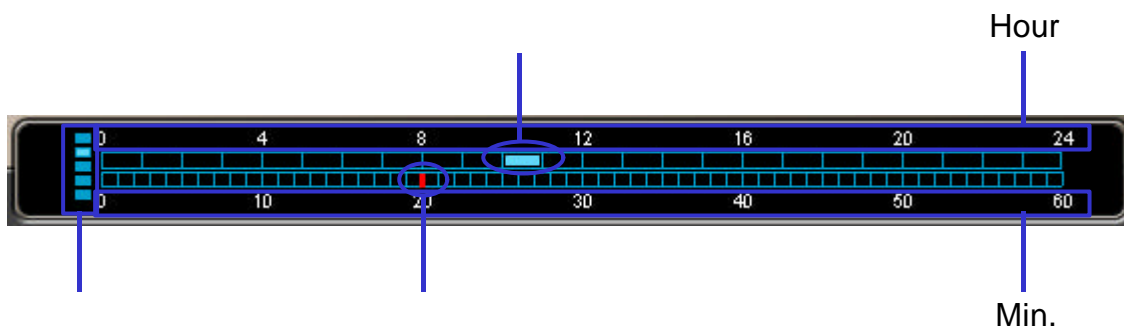
Searching Play Option



Display control buttons will let operator can search from various points as follows.

	Hour back	11:30AM
	Hour start	12:00PM
	One frame back	If current time is 12:30PM
	Play Backward	
	Pause	
	Stop	
	Play	
	One frame next	
	Hour end	
	Hour next	

Record Status Graph



Red bar indicates current playing time.

Blue-colored area indicates recorded area.

Indicates the selected file is being played by illumination.
(Illuminating speed may vary for its play speed)

Enlarging and Calibrating the selected image

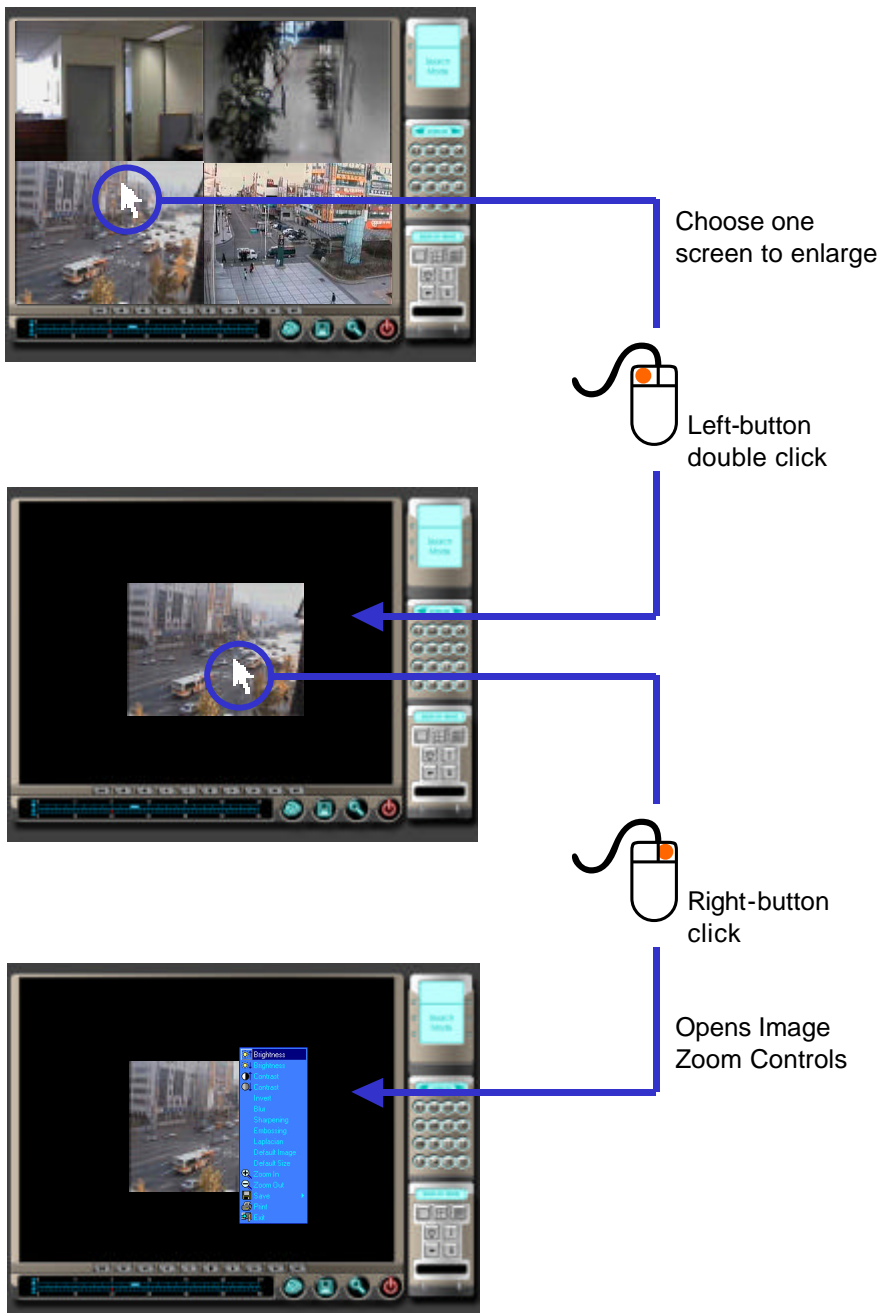
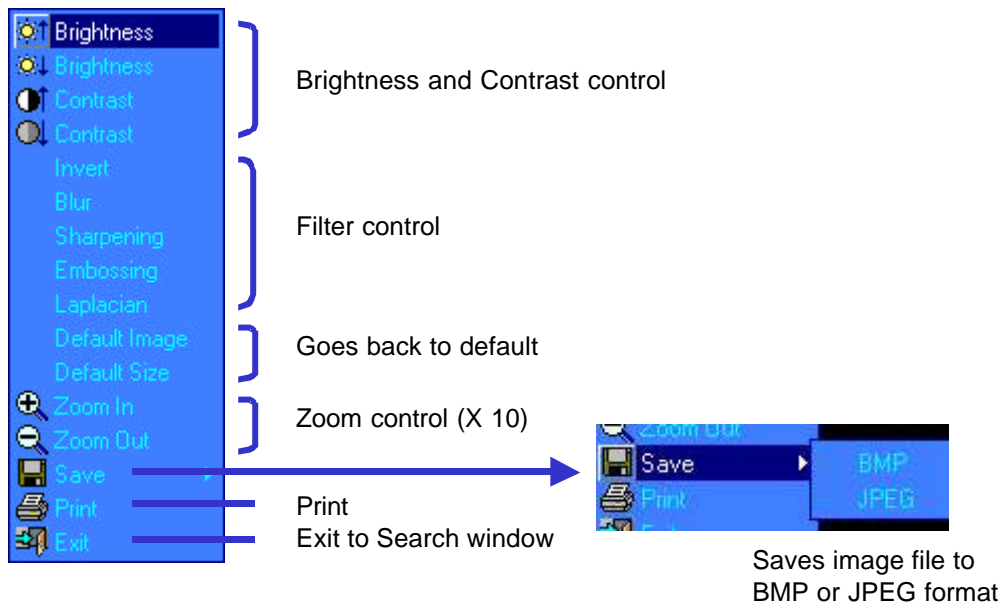


Image Control



Filter Control



Inverts color of image



Blur

Soften the selected image



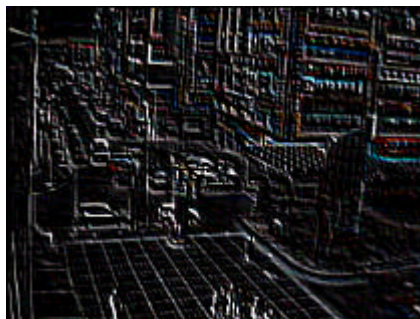
Sharpening

Sharpen the selected image



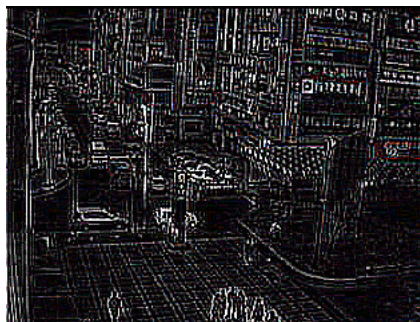
Embossing

Embosses the selected image



Laplacian

Shows only outline of the selected image



Printing the selected screen



Prints selected screen

Operator can also print from “Image Control”

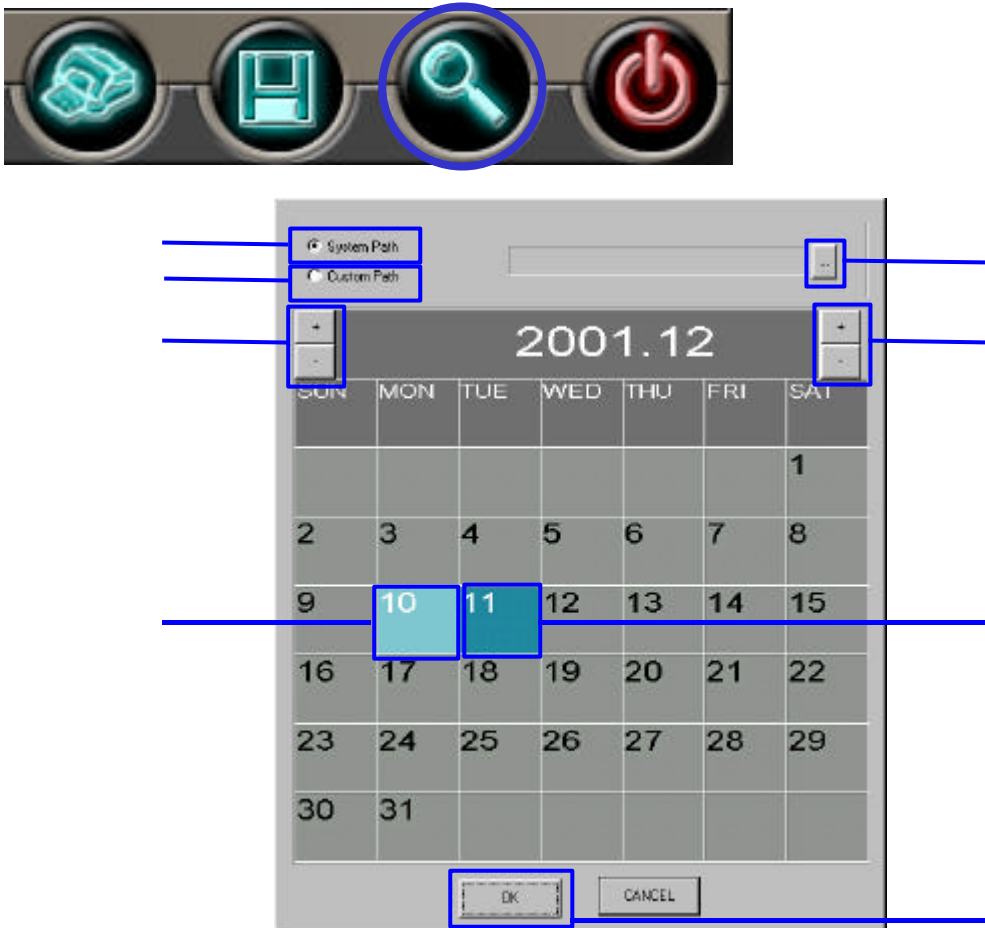
Saving the selected screen



Example : the status of the above figure

The recorded data of camera#2 is to be recorded in the disk D:/ as AVI format.

Locating the Recorded images



Looks for recorded files in system path (default)

Use custom path for recorded file location.

Opens file browse window for custom path use.

Year selection.

Month selection.

Indicates date that files were recorded.

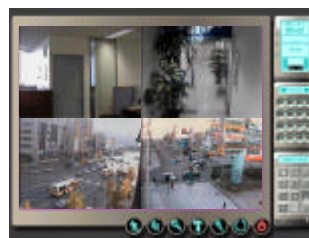
Current date

Clicking "OK" button will start play recorded files in selected date.

Exit to Main Search Screen



Goes back to Main screen



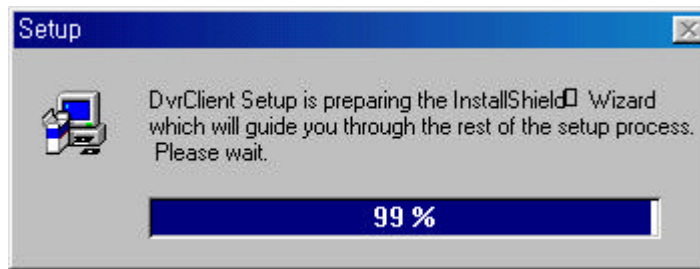
This page was left blank intentionally.

Remote Client PC Setup & Guide

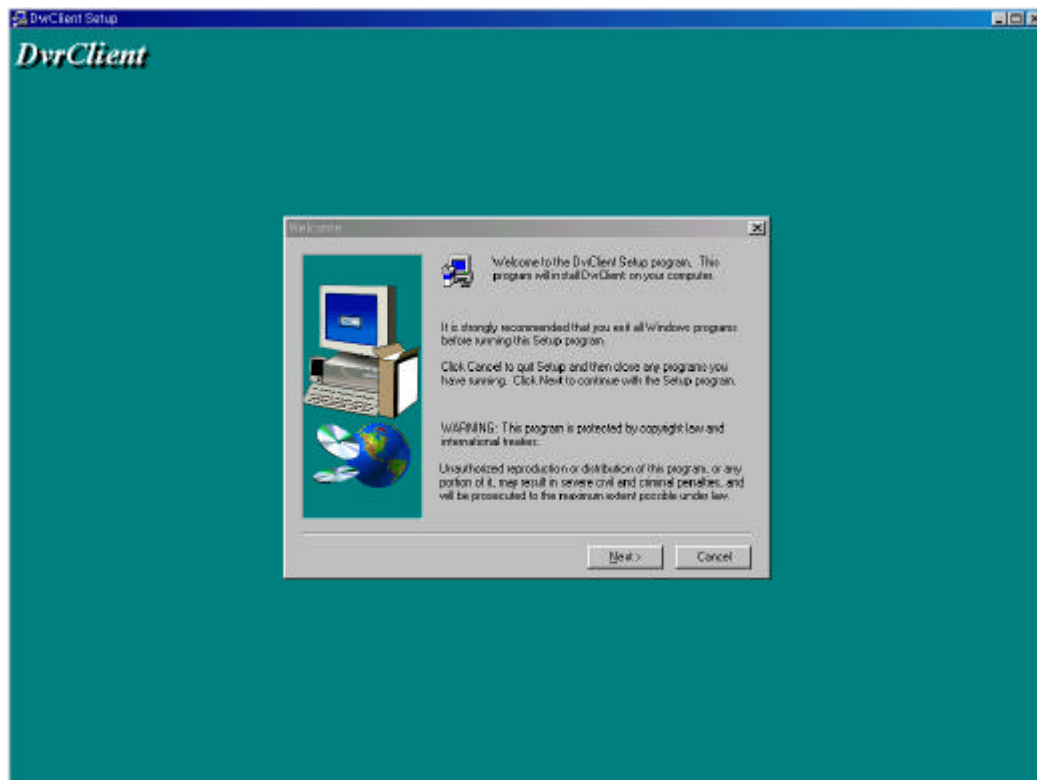
All instructions are based on Windows 98

Client Program Installation

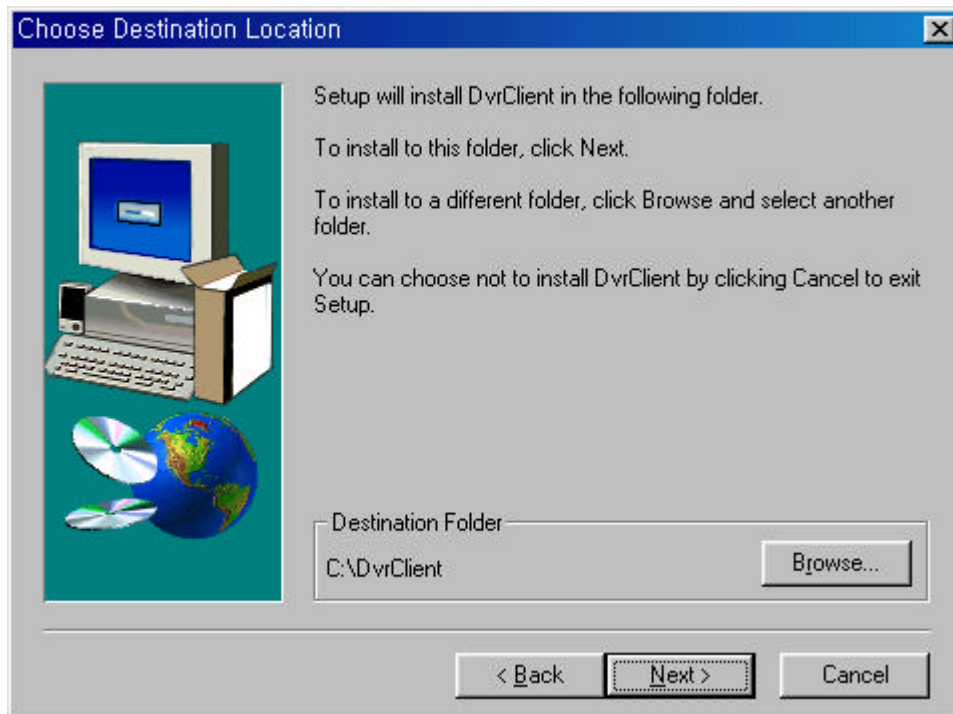
1. Insert the installation CD provided with DVR and select “SecuMesh client setup.exe” Click “next” button at the first screen as follows.



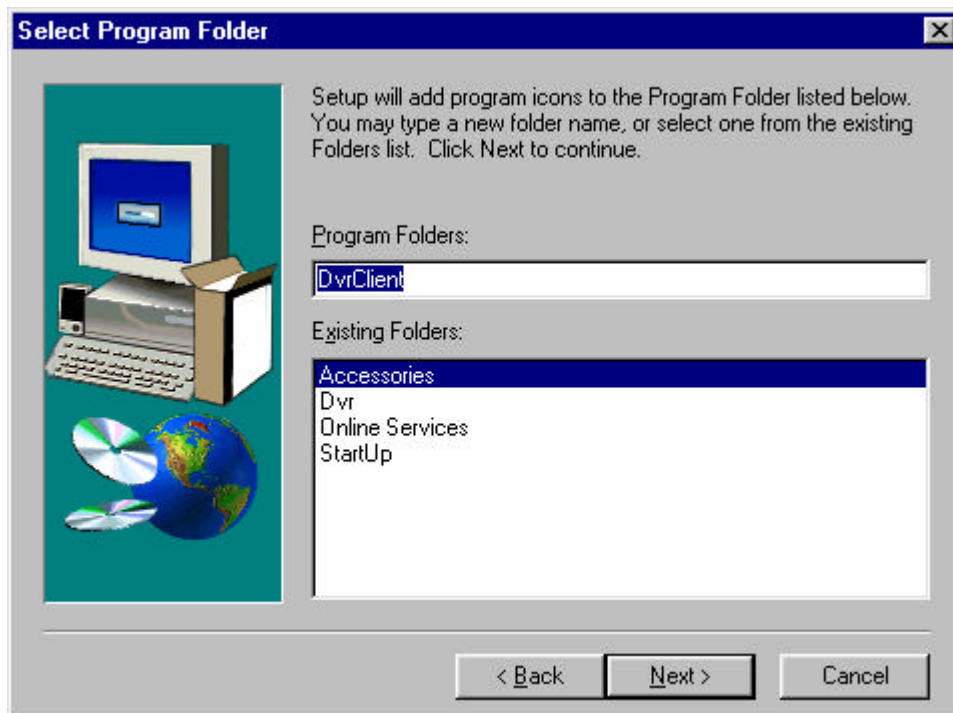
2. Click “NEXT” button in the “DVR Client Setup” window to start setup.



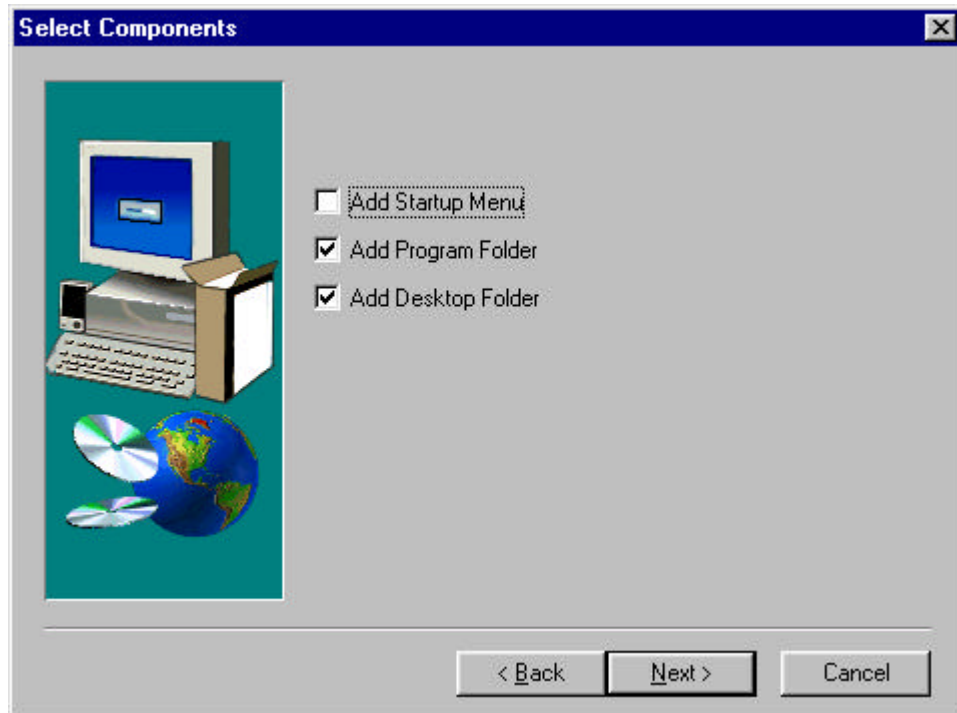
3. Click “NEXT” button in the “Choose Destination Location” window.



4. Click “Next” button at “Select Program Folder” window if you do not want to change the folder name.

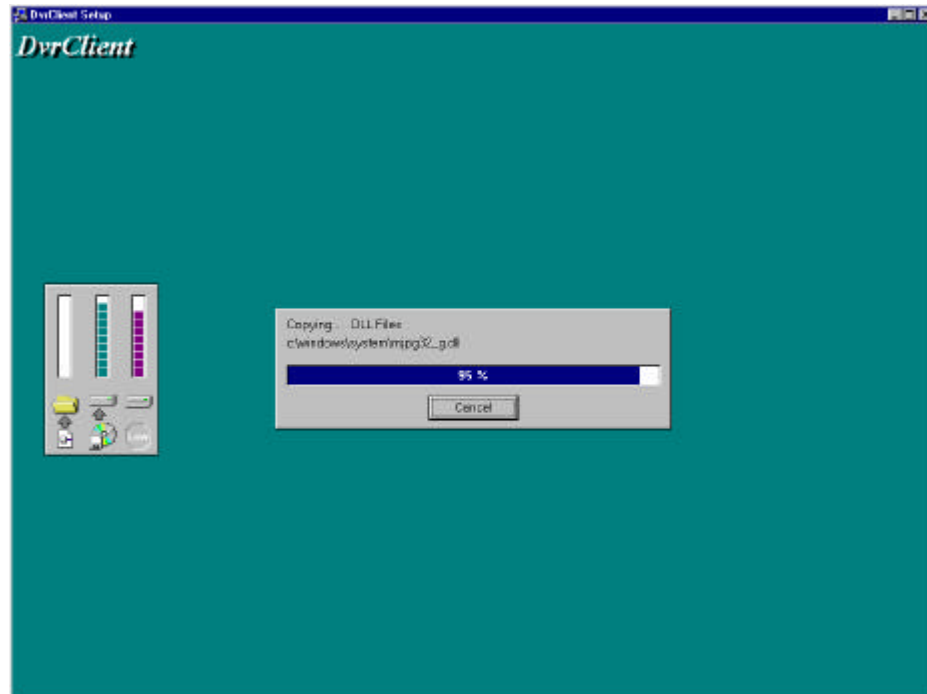


5. Check the boxes of options you want to add.

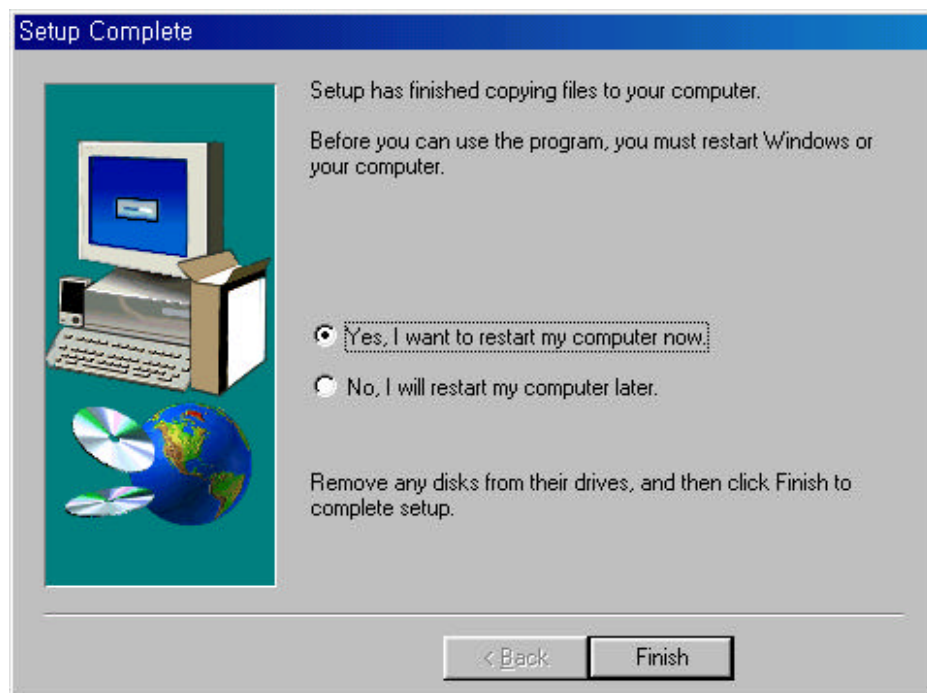


- Add Startup Menu : Program automatically starts when DVR is turned on.
- Add Program Folder : Register in the “Program Files” .
- Add Desktop Folder : Register in the “Desktop” .

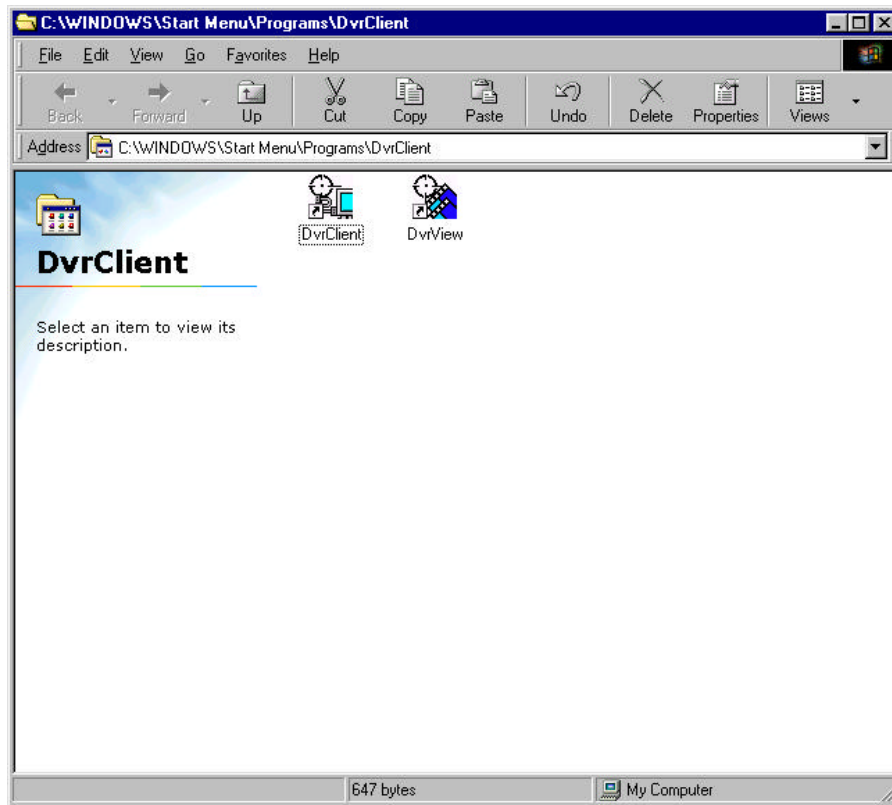
6. Installation is going on.



7. Click "Finish" button when setup is complete. System will reboot.



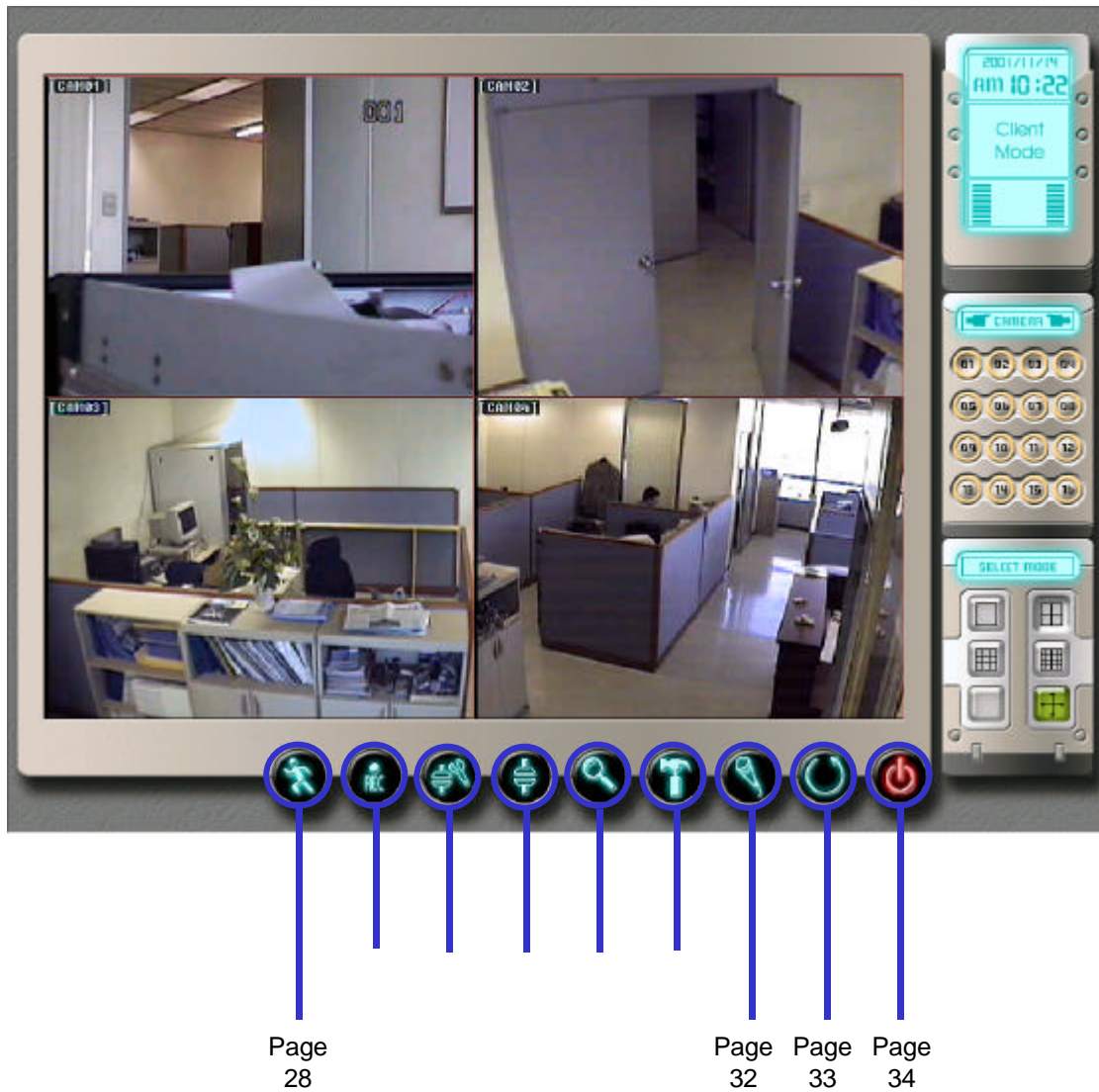
8. Close the window when the following window is prompted.



This page was left blank intentionally.

This page was left blank intentionally.

Main Screen – Client PC



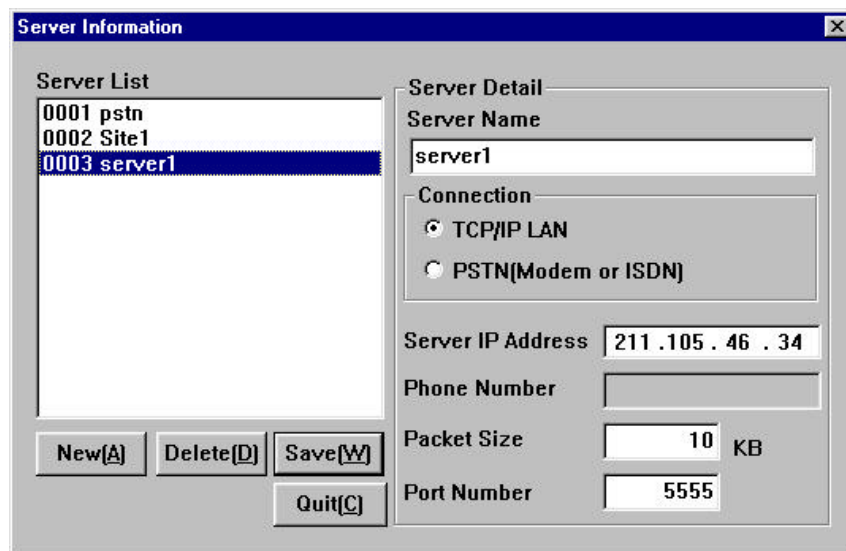
1. Recording transferred images in the HDD.
2. Setup of Connection to Server
3. Connection Execution Button
4. Search in the Local Client Directory
5. Setup for basic configuration

Function Button - Recording



1. Client program displays surveillance image, not if this button is clicked.
2. This button starts recording received images in the local hard disk.
3. The recording directory can be setup in “Basic Configuration” section.
4. When the allocated hard disk space gets below some level, the oldest images will be deleted to accommodate the newest images to be recorded.

Function Button – Connection Setup



1. You can register the server here.
2. The server name to be registered.
3. Choose “TCP/IP” in the LAN environment, or “PSTN” if Modem environment.
4. “Server IP Address” is activated if “TCP/IP” is chosen.
5. “Telephone Number” is activated if “PSTN” is chosen.
6. “Packet Size” is the minimum data size to communicate with the server.
7. “Port Number” is the port number to communicate with server.
8. We recommend “Packet Size” and “Port Number” not to be changed.

Function Button - Connection



Login & Connect

Server Name: server1

LOGIN ID: guest

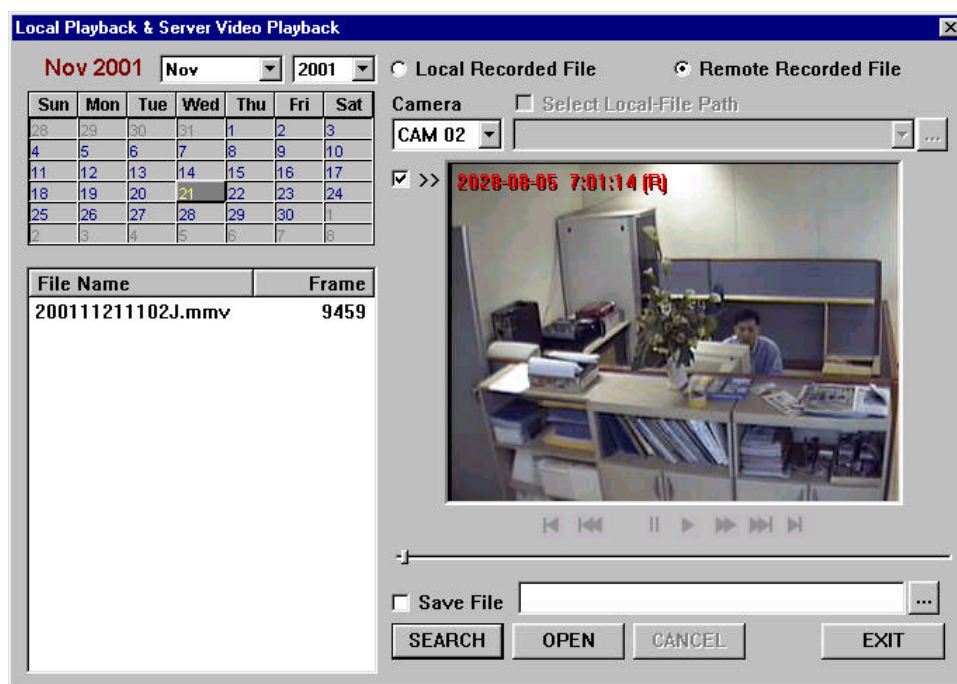
PASSWORD: *****

☒ Save password

Connect Cancel

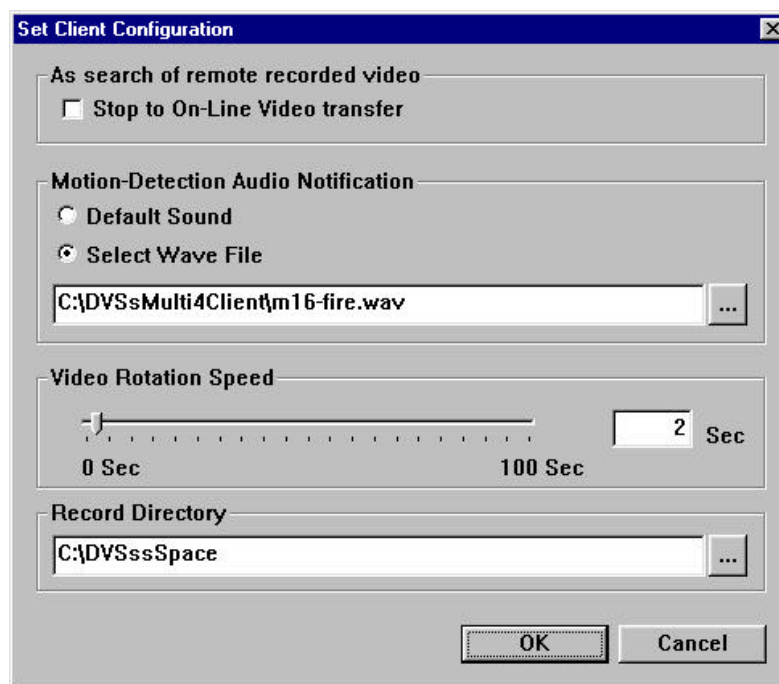
1. You can choose the registered server to be connected.
2. Enter ID here which is registered in the server.
3. Enter Password here which is registered in the server.
4. "Save Password" let the password prompt automatically when you try to connect next time for convenient access.

Function Button - Search



1. Designate the folder(C:\DVSssSpace\Site1) in which the images are recorded.
2. Select date to search.
3. Select the camera channel to search.
4. "File Search" button lists the files with recorded images.
5. The listed files are sorted in the order of date and time so that you can easily select files you need.

Function Button – Client Setup



1. If this “Real time remote image not selected” option is checked, you can accelerate the image transfer rate from the server by skipping the not-that-important images.
2. “Alarm Select” let you choose between the siren and the sound file for the alarm when motion detected.
3. “Alternating time period” let you control the time period of alternating camera channels. Alternating stops if set to “0”.
4. “Recording directory” is the directory for the image to be stored.

Trouble Shooting

Please check the following cases to find out whether they can solve your problem before contacting us to save time and effort. Thank you.

Problem	DVR board is not detected(installed) correctly.
Answer 1	Change the PCI slot.
Answer 2	Remove the colliding devices.

Problem	Program was installed, but Main screen is corrupted.
Answer 1	Check if the monitor color is set to 16bit (high color).

Problem	Program works O.K. But the display quality is low.
Answer 1	Check camera, and/or cord connection
Answer 2	Control brightness and contrast by clicking the right mouse button on the screen.

Problem	Recording is not done.
Answer 1	Check if "Camera Count" is set OK in page 41.
Answer 2	Check if "Video Type" is correctly set in page 41.
Answer 3	Check if "Scheduling" of each camera is set OK in page 47.
Answer 4	Check if each camera is set to record in either the full recording mode or the motion recording mode in page 36.
Answer 5	Check if, when motion detecting mode is set, the responsiveness is too low in page 27.

Problem	No voice communication between the server and the client.
Answer 1	Check if the sound card is installed correctly.
Answer 2	Follow through "Start Program Accessories Entertainment Sound Recorder" and try to record a voice. If recorded, It is OK.
Answer 3	If not recorded, check the software compatibility of the sound card.

Problem	Email setup (POP3)
Answer 1	Check if the "Outlook Express" is a default email application because the email of the DVR server is transferred only through the "Outlook Express".
	(Ask to the system administrator or to the web hosting company.)

Problem	Client User Registration Method
Answer 1	In the DVR server, register the User ID and Password with necessary access level. The "Supervisor" access level can have a full control over the server. If the User ID is "guest", you can not have full control even if you have "Supervisor" access level.

If your problem is not solved until this moment after checking all the cases listed above, please contact us at our sales agents in your area or directly contact to LeadTech Corp. by your preferred contact method.



82 31 708 7677



82 31 708 7673



support@leadtech21.com

Optional Web Package

This web server program provides you with accessibility to the remote DVR server through the Internet to let you monitor and control the DVR without any other help of hardware or software.

1. Web server program installation

Double click the file “bk3224d7.exe” in the “WebPack” directory of the Installation CD provided.

“Installation Wizard” will guide you through the installation.

Register your ID and Password.

Leave all other options as default status.

2. After finishing the Web server program installation, Copy the “default.html”, “vcr class files” in the “WebPack” directory of the Installation CD to “.. \Xitami \Webpages” which is the subdirectory of the Web server program directory.

The “default.html” includes the module to execute the Java Applet which load images on the web browser. You can modify this file to customize your web page output.

3. Start Web server program. You can start this by double-clicking the “xiwin32.exe” file in the Web server program directory.

4. Start the DVSS server.

Check the “Web browser support” check box in the “Network setup” section in page 28 and enter the image streaming directory path as “.. \Xitami (Web server root directory) \webpages \images”.

5. Installation is finished.

From the remote client PC, start the web browser and enter the IP address of the DVSS server or domain name if available.

example) <http://211.188.40.211/default.html>

6. Now you can see the video images of the DVR server.

Warranty

Limited Warranty

LeadTech Corp. warrants this products and all parts thereof, except as set forth below ONLY TO THE ORIGINAL PURCHASER to be FREE FROM DEFECTIVE MATERIALS AND WORKMANSHIP from the date of purchase for the period of ONE YEAR. If this product is found to be defective in the warranty period, LeadTech Corp. will repair or replace defective parts at no charge to the original owner.

What is not covered :

This limited warranty provided by LeadTech Corp. does not cover :

- Products which have been subject to abuse, accident, alteration, modification, tampering, negligence, misuse, faulty installation, lack of reasonable care, or if repaired or serviced by anyone other than a service facility authorized by LeadTech Corp. to render such service, or if affixed to any attachment not provided with the products, or if the model or or serial number has been altered, tampered with, defaced or removed;
- Damage due to line power surge or fire.
- Damage due to operation not under Environmental Specification.
- Damage that occurs in shipment, due to act of God, and cosmetic damage.
- Damage due to incorrect maintenances.
- Damage that occurs due to use of any hardware/software/other accessories not provided initially.
- Reinstallation of the bundled software and/or the software which was installed initially.
- Accessories, Batteries (except rechargeable batteries are covered 90 days from the date of purchase.)

Enter below necessary information and retain this for future reference.

Warranty Sheet

Model No.		
Serial No.		
Warranty Period		One year from the date of purchase
Purchase date		
Purchaser	company	
	name	
	address	
	telephone	
Dealer	company	
	name	
	address	
	telephone	

Memo

Memo

Memo