

USER GUIDE



SecuMesh DVR

LeadTech Corp.

FCC NOTICE

THIS DEVICE COMPLIES WITH PART 15 OF THE FCC RULES. OPERATION IS SUBJECT TO THE FOLLOWING TWO CONDITIONS:
(1) THIS DEVICE MAY NOT CAUSE HARMFUL INTERFERENCE, AND
(2) THIS DEVICE MUST ACCEPT ANY INTERFERENCE RECEIVED, INCLUDING INTERFERENCE THAT MAY CAUSE UNDESIRABLE OPERATION.

This equipment has been tested and found to comply with the limits for a Class B digital device, pursuant to part 15 of the FCC Rules. These limits are designed to provide reasonable protection against harmful interference in a residential installation. This equipment generates, uses and can radiate radio frequency energy and, if not installed and used in accordance with the instructions, may cause harmful interference to radio communication. However, there is no guarantee that interference will not occur in a particular installation. If this equipment does cause harmful interference to radio or television reception, which can be determined by turning the equipment off and on, the user is encouraged to try to correct the interference by one or more of the following measures :

- Reorient or relocate the receiving antenna.
- Increase the separation between the equipment and receiver.
- Connect the equipment into an outlet on a circuit different from that to which the receiver is connected.
- Consult the dealer or an experienced radio/TV technician for help.

NOTE : The manufacturer is not responsible for any radio or TV interference caused by unauthorized modifications to this equipment. Such modifications could void the user's authority to operate the equipment.

Copyright

© 2001 LeadTech Corp. All rights reserved.

SecuMesh DVR User Guide for Windows®

This manual, as well as the software described in it, is furnished under license and may be used or copied only in accordance with the terms of such license. The content of this manual is furnished for informational use only, is subject to change without notice, and should not be construed as a commitment by LeadTech Corp. LeadTech Corp. assumes no responsibility or liability for any errors or inaccuracies that may appear in this documentation. Except as permitted by such license, no part of this publication may be reproduced, stored in a retrieval system, or transmitted, in any form or by any means, electronics, mechanical, recording, or otherwise, without the prior written permission of LeadTech Corp.

All the trademarks described in this document are either registered trademarks or trademarks of LeadTech Corp. in Korea and/or other countries. All other trademarks are the property of their respective owners.

Contents

DVR Overview	6
System Requirement & Technical Specification	7
DVR Packing List	8

DVR Server Setup & Guide

Software Installation

Check Points before Installation	11
Driver Installation	14
DVR Server Program Installation	18

Main Screen Menu

Main Screen	24
Enlarging the screen	25
Video Option	26
Setup of Motion Detection Area	27
Recording Mode in Screen	28
Switching Screens	29
Function Buttons	30
Status Display	37
Camera Selection Display	38
Display & Camera Control Panel	39
Pan/Tilt Control of Cameras	40

Contents - continued

Configuration Menu

ID & Password for Setup	42
Basic Configuration	43
Network Setup	44
Setup of Recording Cameras	45
Surveillance Mode Setup	46
Setup of Storage Drives	47
Registration of Users	48
Scheduling of Recording Cameras	49
Scheduling of Sensors	50

Search Mode Menu

Searching the Recorded Images	52
Channel Play Mode	53
Searching Play Option	54
Record Status Graph	55
Enlarging and Calibrating the selected image	56
Image Control	57
Filter Control	57
Printing the selected screen	59
Saving the selected screen	59
Locating the Recorded Images	60
Exit to Main Search Screen	61

Contents - continued

Remote Client PC Setup & Guide

Client Program Installation	64
Main Screen – Client PC	71
Function Buttons	72
Trouble Shooting	77
Optional Web Packages	79
Limited Warranty	80

DVR Overview

- **Substituting** the current **CCTV/VTR**(analog recording) video surveillance system, **DVR(Digital Video Recorder) is an emerging new method for automatic control, monitoring, alarm and messaging using more reliable digital recording by high-tech computer system with much less human and material resources** than the CCTV/VCR system.
- **DVR system** can record, compress, retrieve and search video images **without need of any extra equipment.**
- High level of reliability of the digital recording in the hard disks **guarantees permanent quality of the video recording.**
- **The best economy** is possible through easy installation, simple operation, and low cost of maintenance of the system.
- **Access to & control of the remote system is possible through the web or the network.**
- Motion detecting & sensing, remote control of cameras **up to 16 independent channels recording** which can be scheduled.

System Requirement & Technical Specification

System Requirement



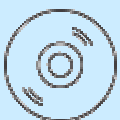


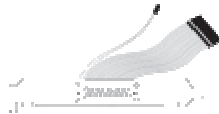


CPU	Pentium IV 1.5GHz or above
OS	Windows 98, ME
Memory	128 MB or above
HDD	40 GB or above
VGA	AGP 32 MB or above
Power	220 VAC

Technical Specification

Display	Max. 120 frames/sec
Recording	Max. 100 frames/sec
Resolution	320 X 240
Codec	MJPEG
Frame size	4 ~ 12 Kbytes/frame
Screens	1, 4, 9, 16
Recording Mode	Continuous, Sensor triggered, Motion triggered
Pan/Tilt	Yes, (Camera dependent)
Communication	LAN (TCP/IP), ISDN, PSTN
Language support	English, Chinese, Japanese, Korean
Client	Remote access to control & monitor the system over Web and network.

DVR Packing List

Item	Quantity
SecuMesh DVR 4CH Board	1
User Guide	1
Application Program CD	1
Accessories	1

Basic Package	Guide Type & Accessories		
	Standard	Option 1	Option 2
 SecuMesh DVR board  User Guide  Program CD	 Basic  SMP 4		
		 SMC 16  SMP 16	
			 LTC-16BP-C

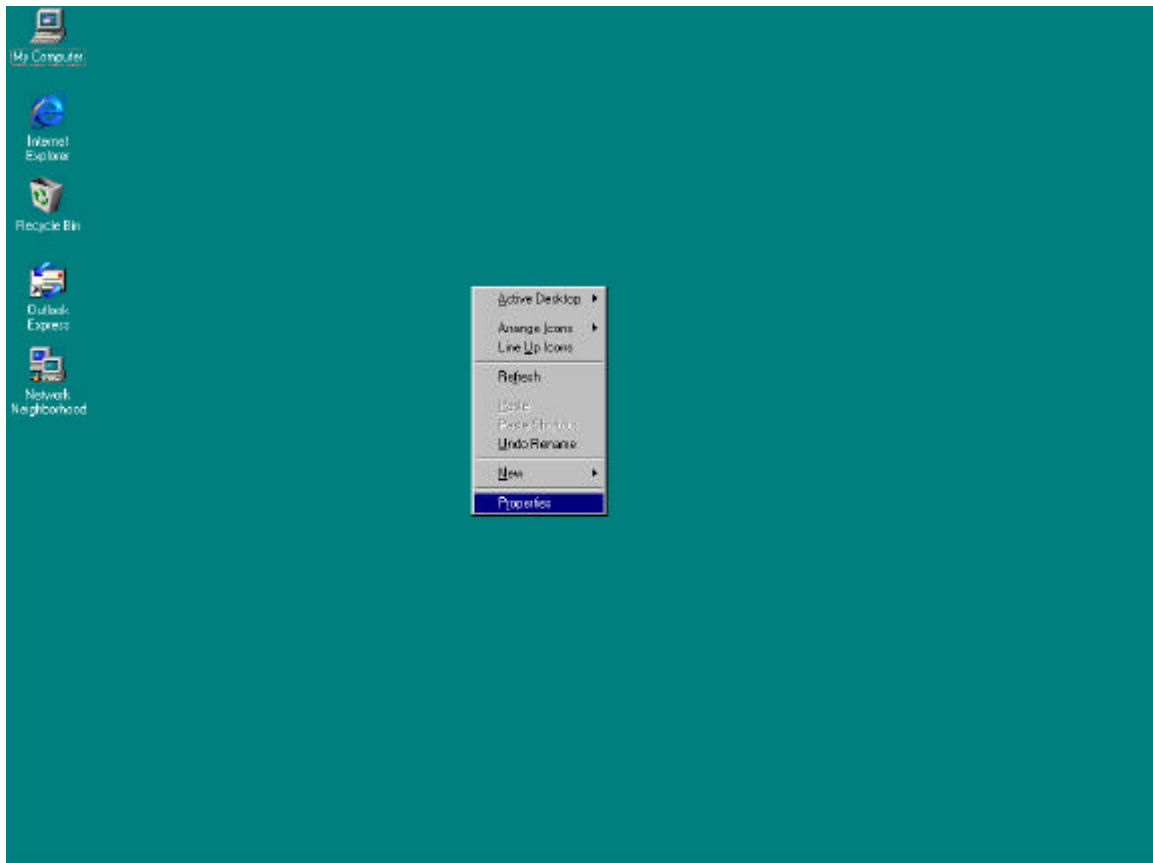
DVR Server Setup & Guide

All instructions are based on Windows 98

This page was left blank intentionally.

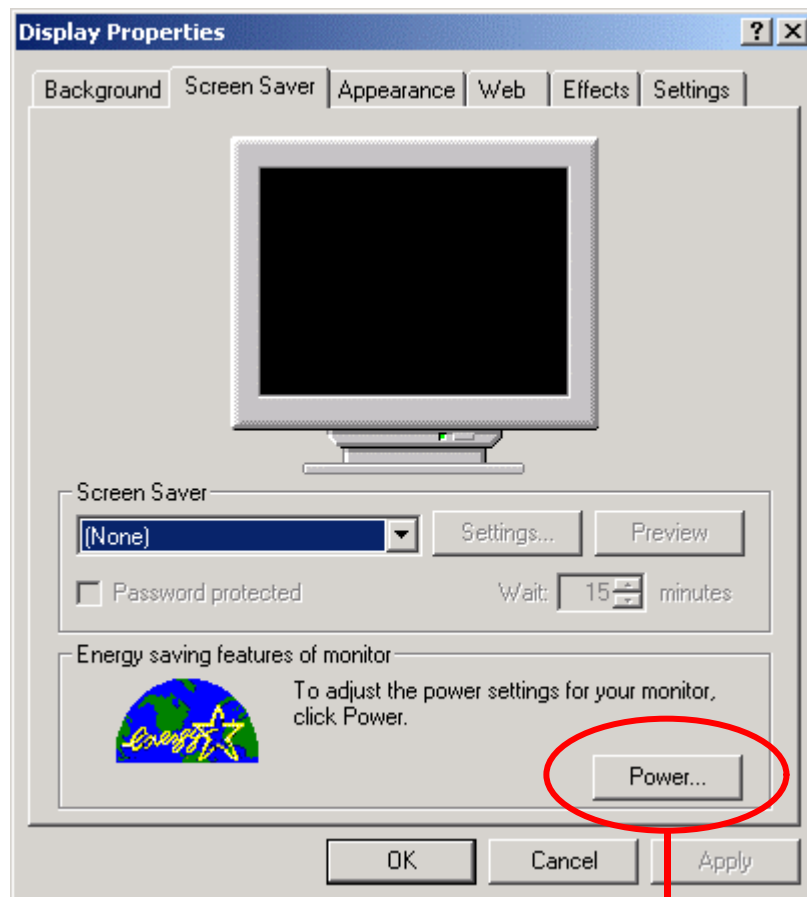
Check Points before Installation

- System Specification
Refer to system requirement section
- Operating System
Windows 98, Windows ME
- Direct X should be installed.
- Recycle Bin setup
Check the check box of “Do not move files to the Recycle Bin. Remove files immediately when deleted.” in the Properties menu of the Recycle Bin
- Setup Display



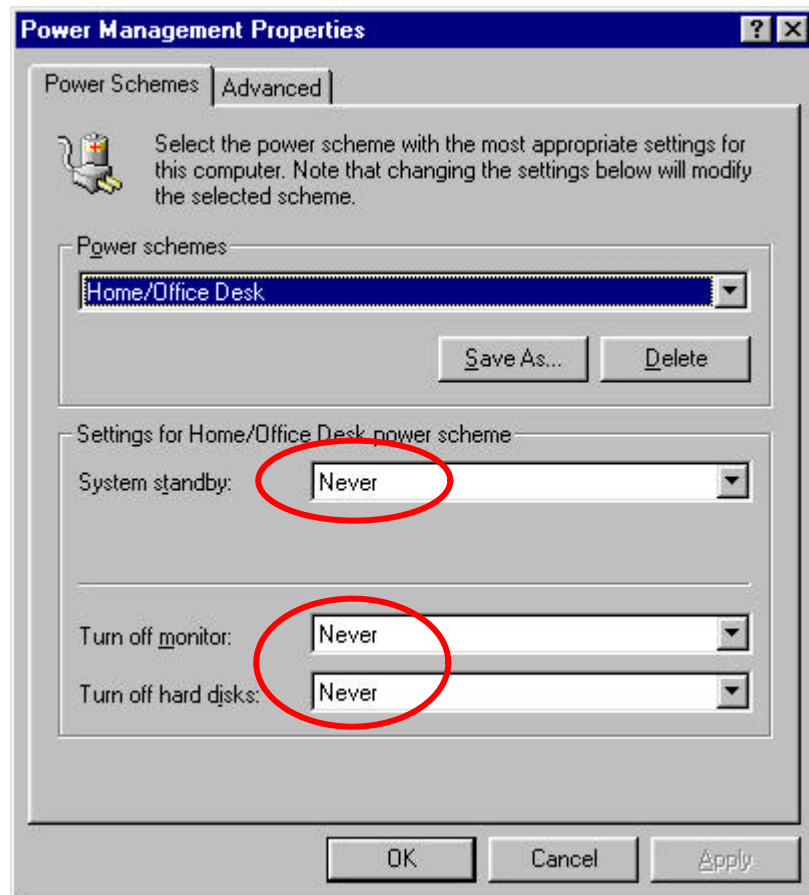
- Click right button of the mouse to choose “Properties”

- Click “Screen saver” tab.



Click “Power ...” button for Power Management Properties setting.

- Set power schemes for both monitor and hard disks to “Never”.



Driver Installation

4 Drivers each for the CAP120 Video Device and the CAP120 Sound Device will be installed. (Totally 8 drivers will be installed.)

1. Start the system. OS will detect the DVR board and “Add/Remove Hardware Wizard” will prompt. Click “Next”



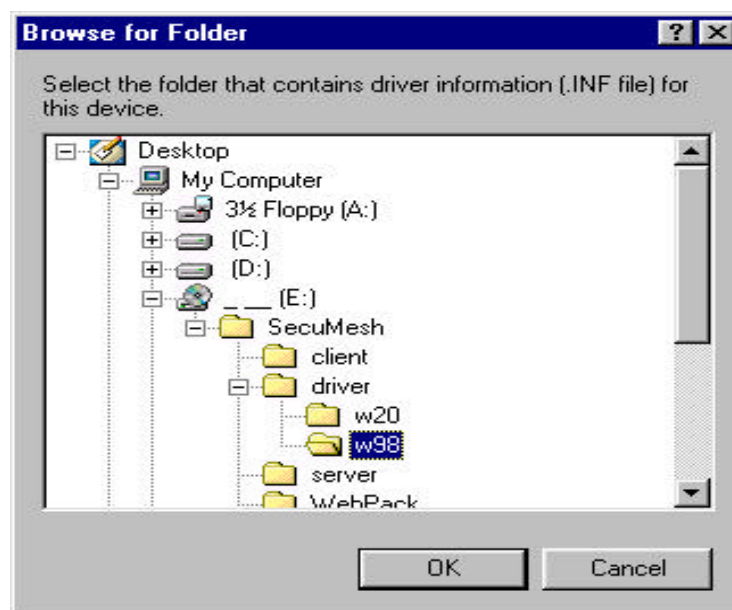
2. Check the “Search for the best driver for your device (recommended)” option and click “Next”.



3. Check the “Specify a location” option and click “Browse..” button.



4. At the “Browse for Folder” window, find the “Driver” directory in the provided program CD and click “Open”



5. At the “Add New Hardware Wizard” window, click “Next” button.



6. Click “Next” button if everything is O.K.

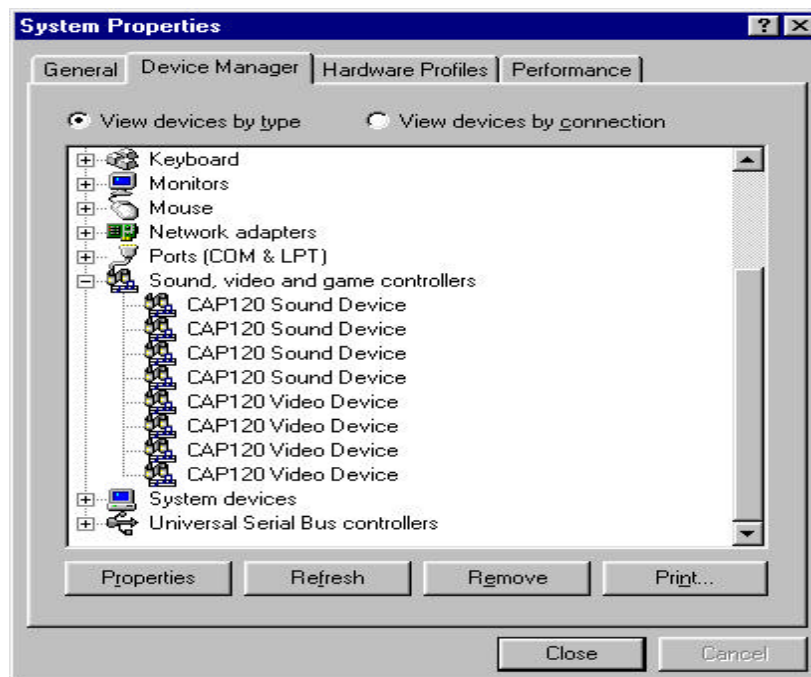


7. After the driver of “CAP120 Video Device” is installed, click the “Finish” button.



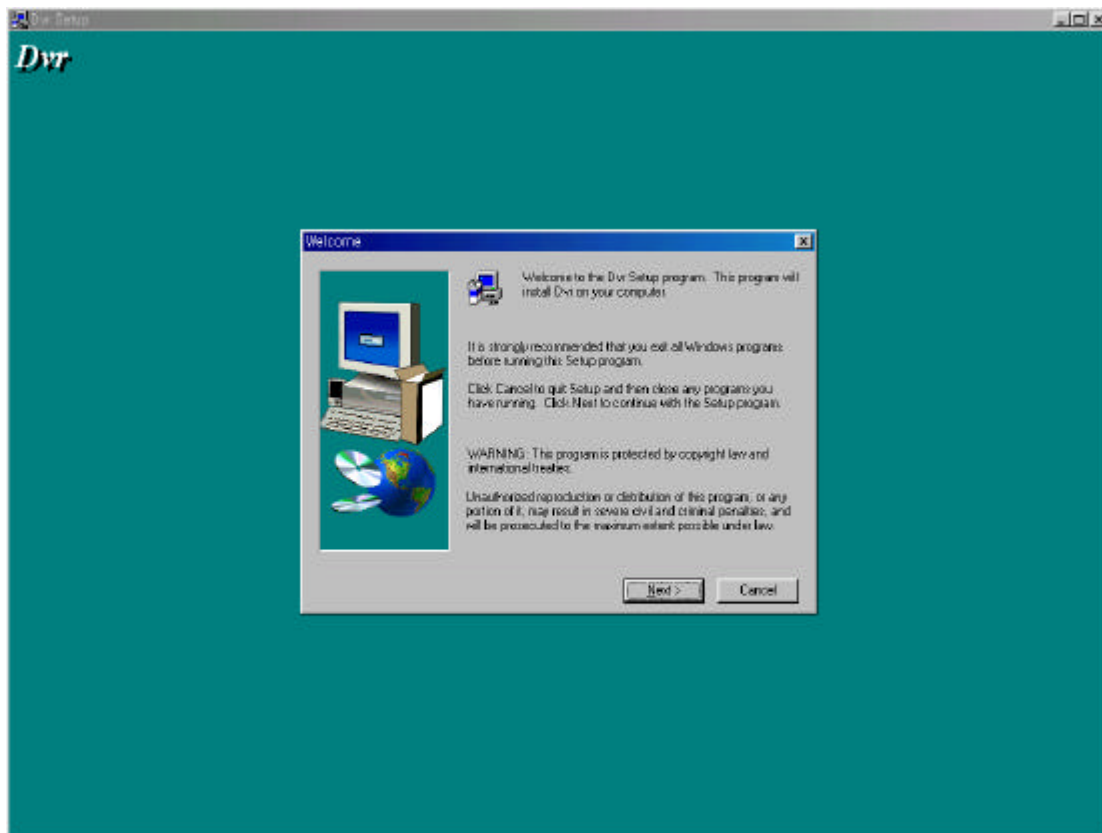
8. Clicking the “Finish” button at above window will automatically start and finish all remaining installation.

9. Follow through ”Start Settings Control Panel System Device Manager Sound, video and game controllers”, and you can check the drivers as below if they are correctly installed.

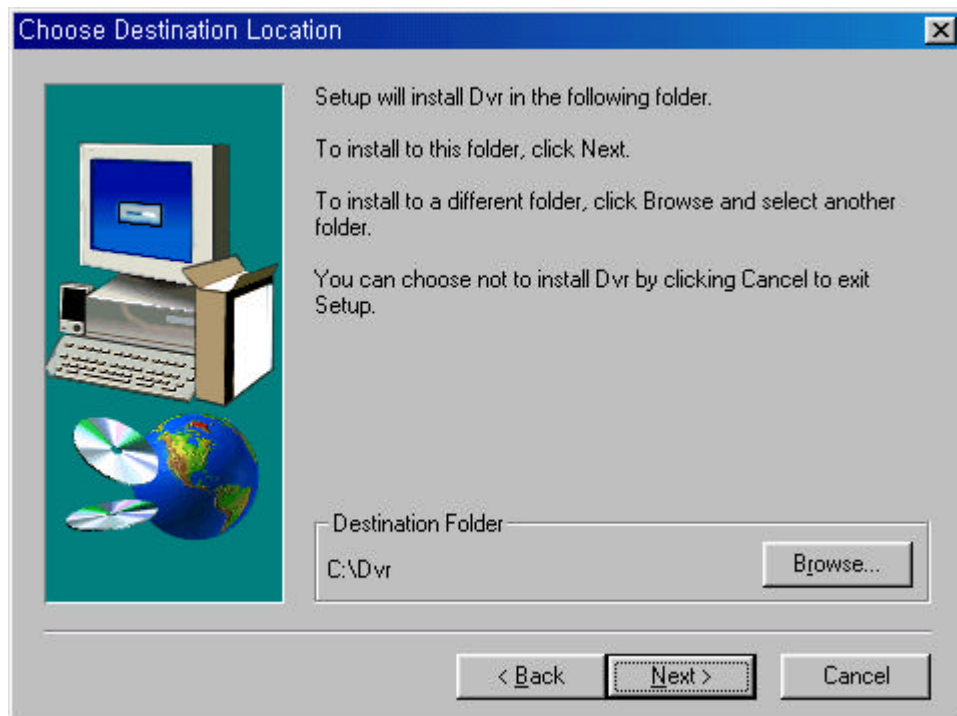


DVR Server Program Installation

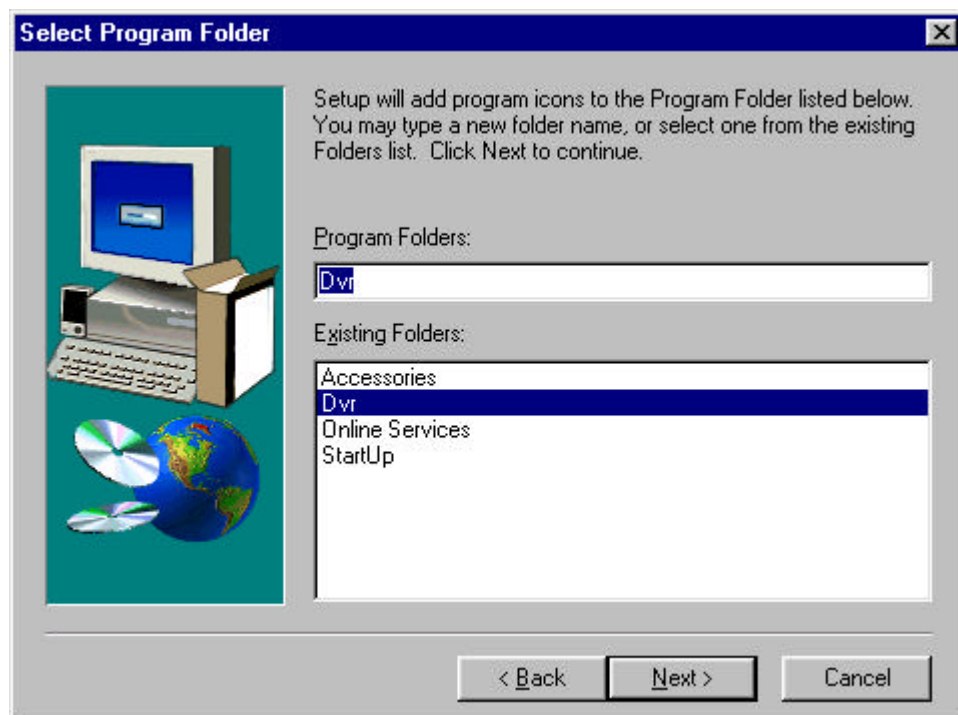
1. Insert the installation CD provided with DVR and select “SecuMesh sever setup.exe” and Click “next” button at the first screen as follows. DVR



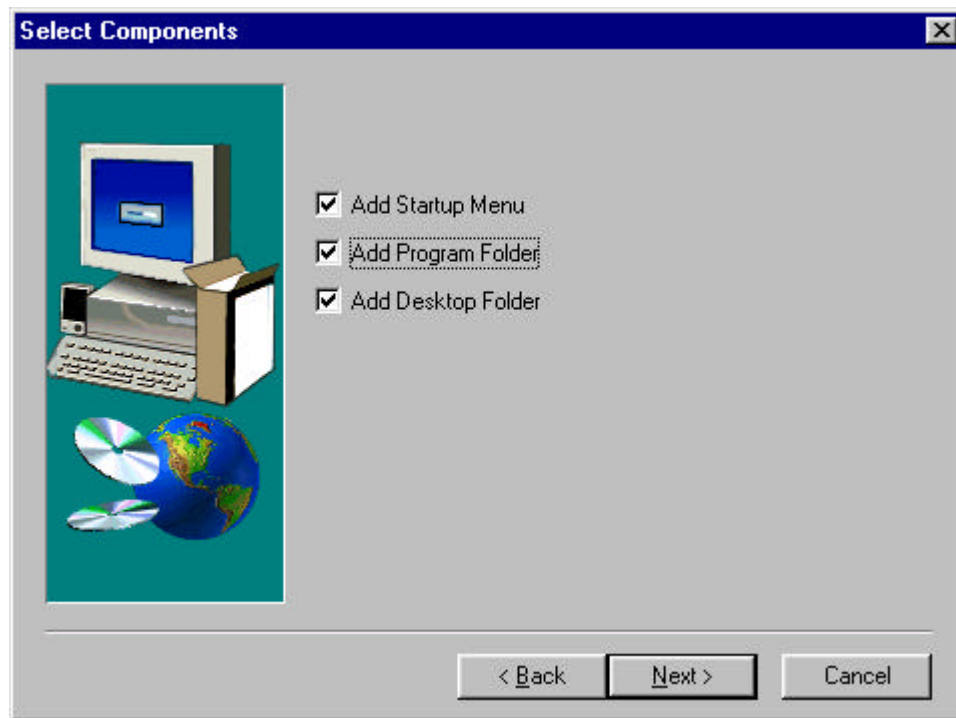
2. Click “Next” button at “Choose Destination Location” window.



3. Click “Next” button at “Select Program Folder” window if you do not want to change the folder name.

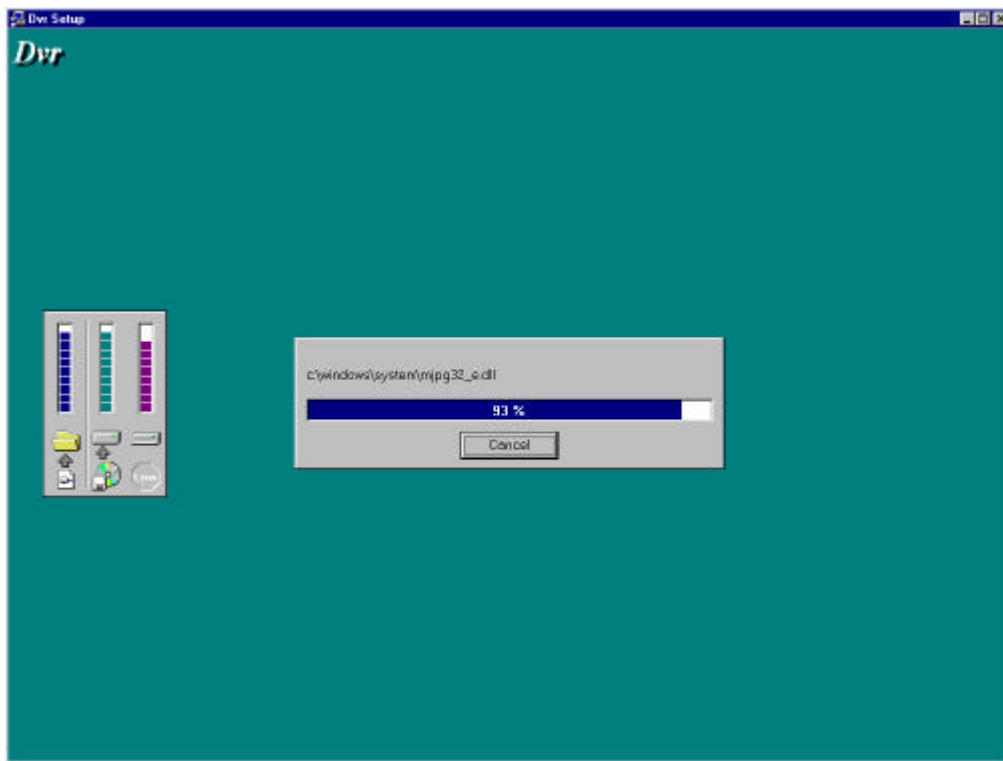


4. Check the boxes of options you want to add.

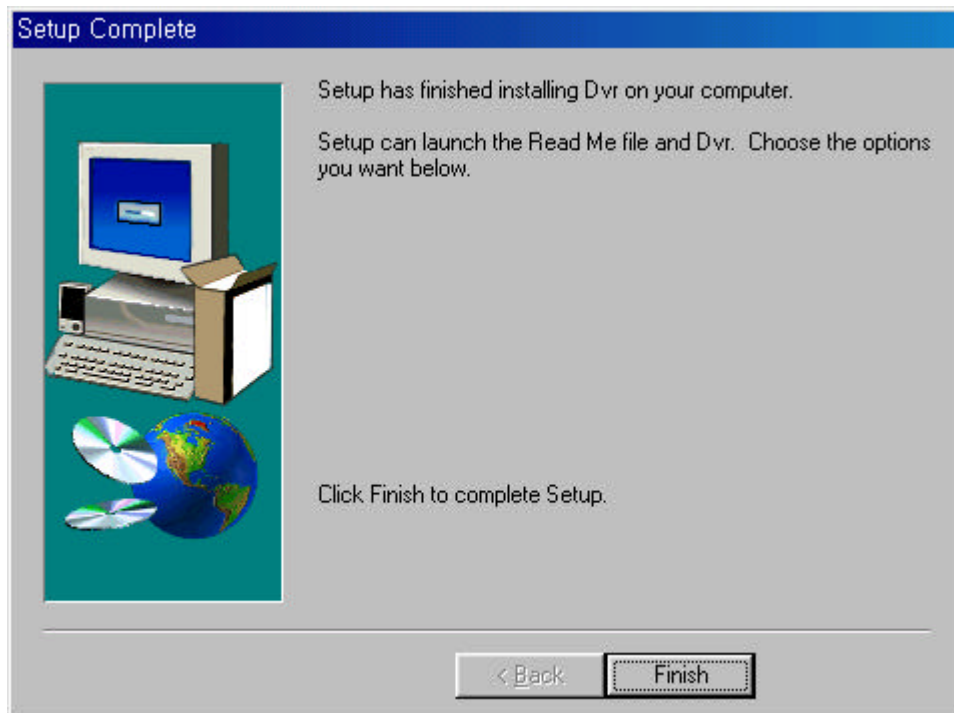


- Add Startup Menu : Program automatically starts when DVR is turned on.
- Add Program Folder : Register in the "Program Files".
- Add Desktop Folder : Register in the "Desktop".

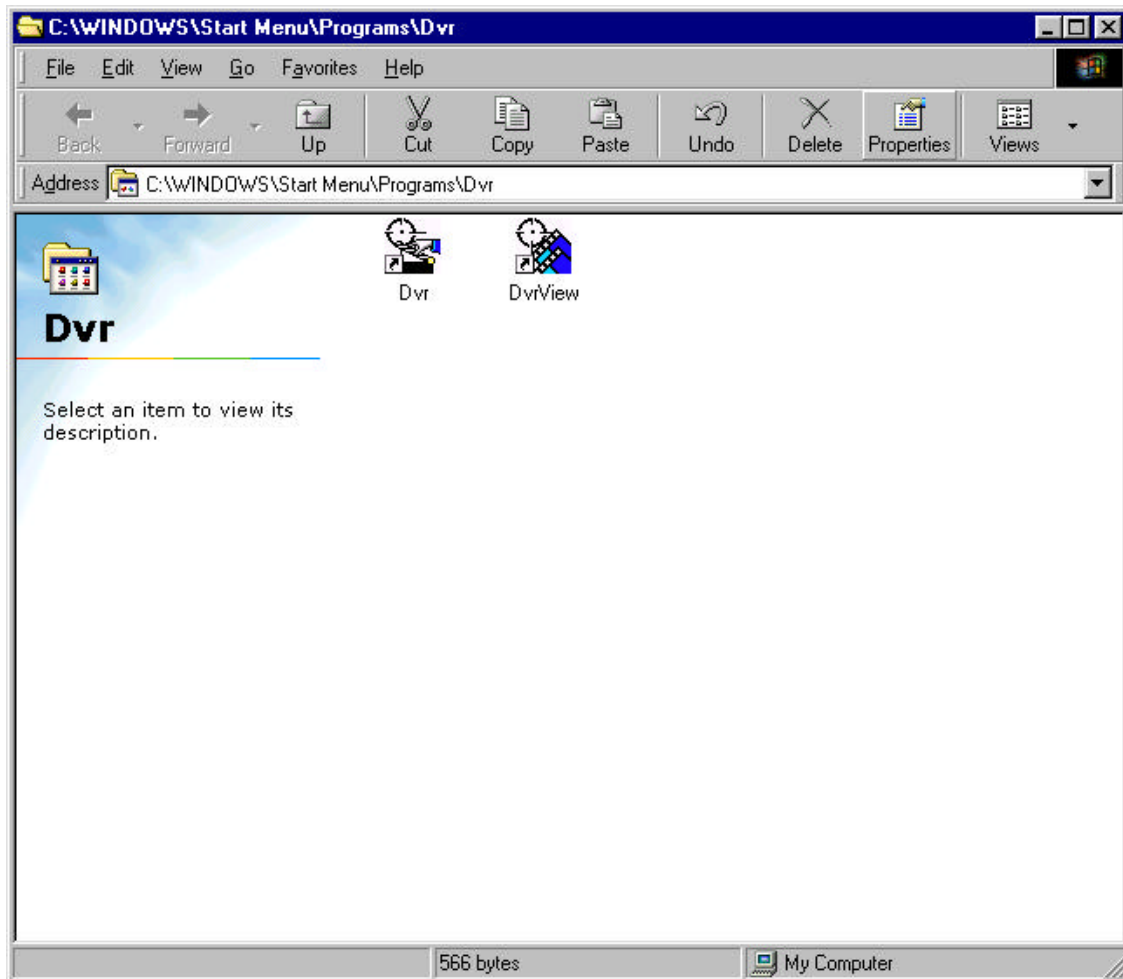
5. Click "Next" button and installation automatically starts.



6. Click "Finish" button when setup is complete.

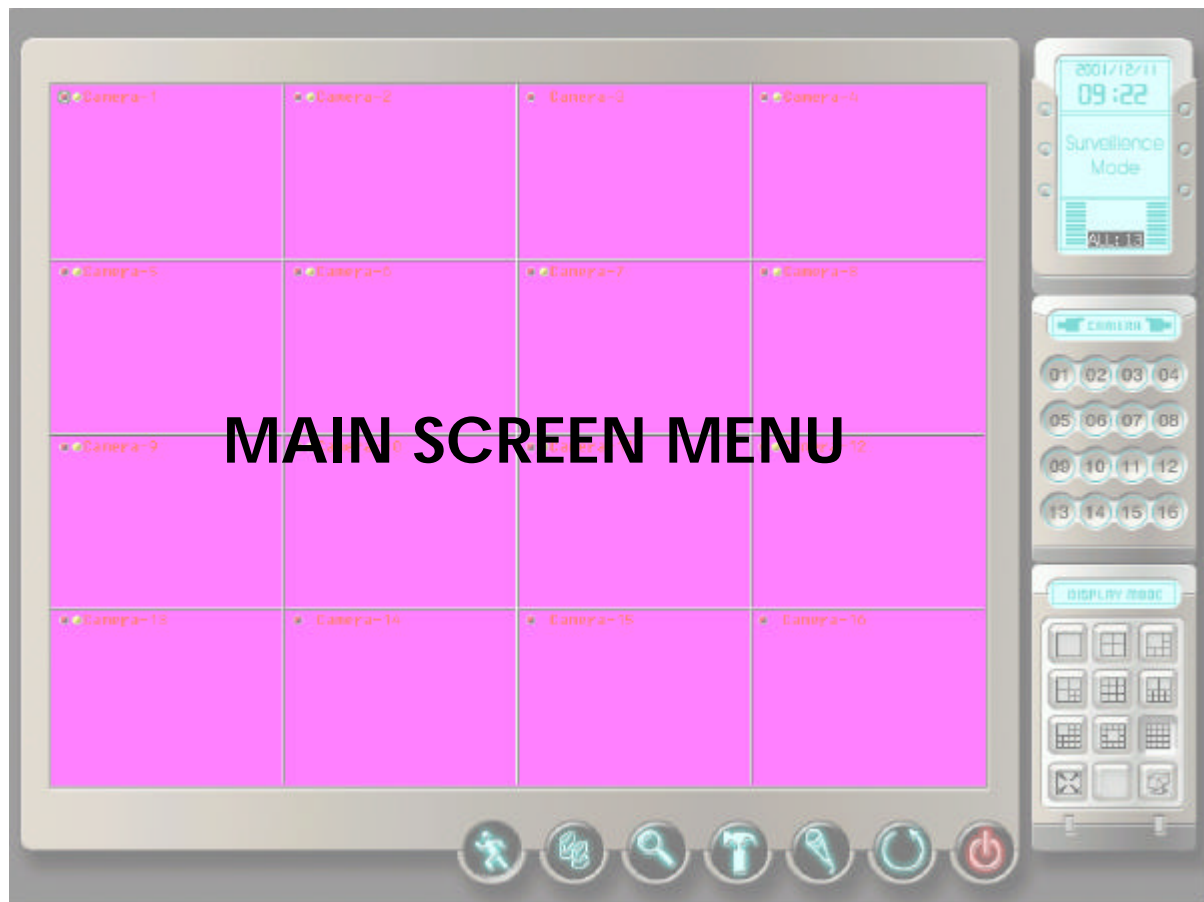


7. Close this window when setup is complete and reboot the system.



If DVR program is not running correctly, check the following.

- Check if SecuMesh 400 board is correctly installed. Click the right button on "My Computer" and Click the "Device Manager" "Sound, Video, Game Controller" You can check whether the board is working O.K.
- Check if the "16bit" color is selected. You can check this by clicking the right button on desktop and choose "Active desktop" "Customize desktop" "Setup".



Main Screen



Monitoring display can be divided by up to 16 separate channels.

Day/Time Storage Status Display page 35

Camera selection buttons page 36

Display Option and Pan/Tilt button for camera control page 37~38

Function Buttons page 28~34

Enlarging the screen



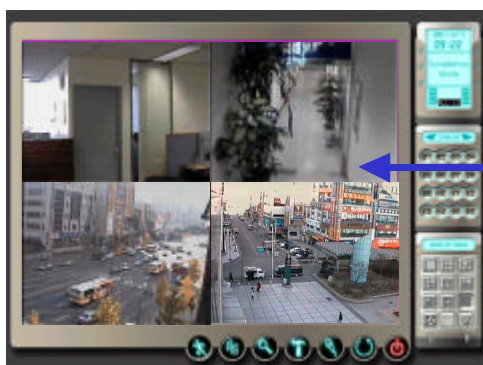
Choose one screen to enlarge



Left-button double click

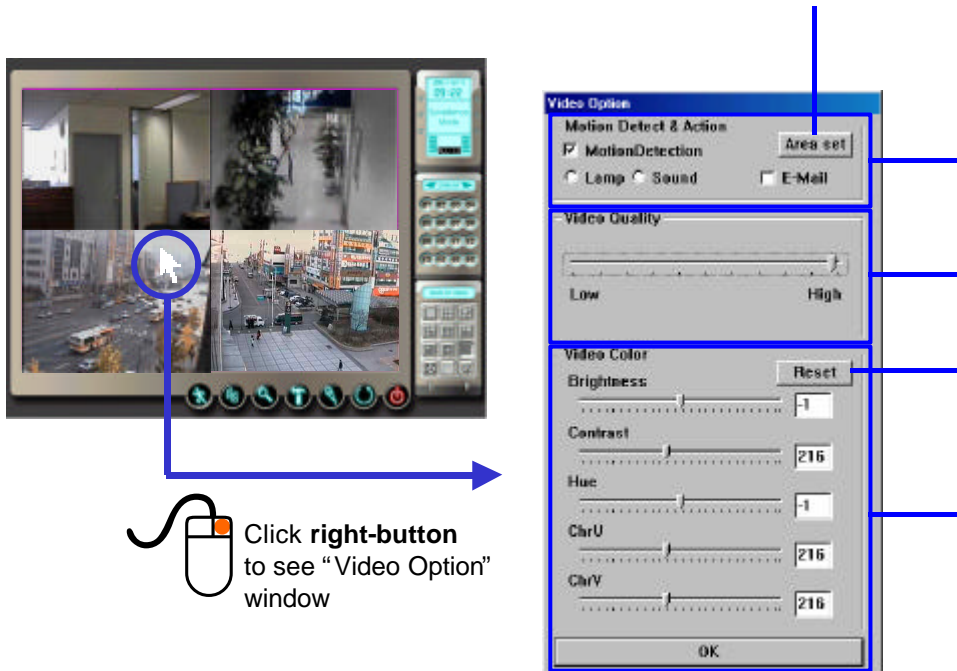



Left-button double click



Goes back to previous display mode

Video Option



 Click **right-button** to see "Video Option" window

Lamp : When motion detected, turn on the lamp on the receiver(RX).

Sound : When motion detected, send alarm to speakers.
(sound card & speaker optional)

E-Mail : When motion detected, send email message when the server is connected to the internet

Record quality level

Set display option back to default

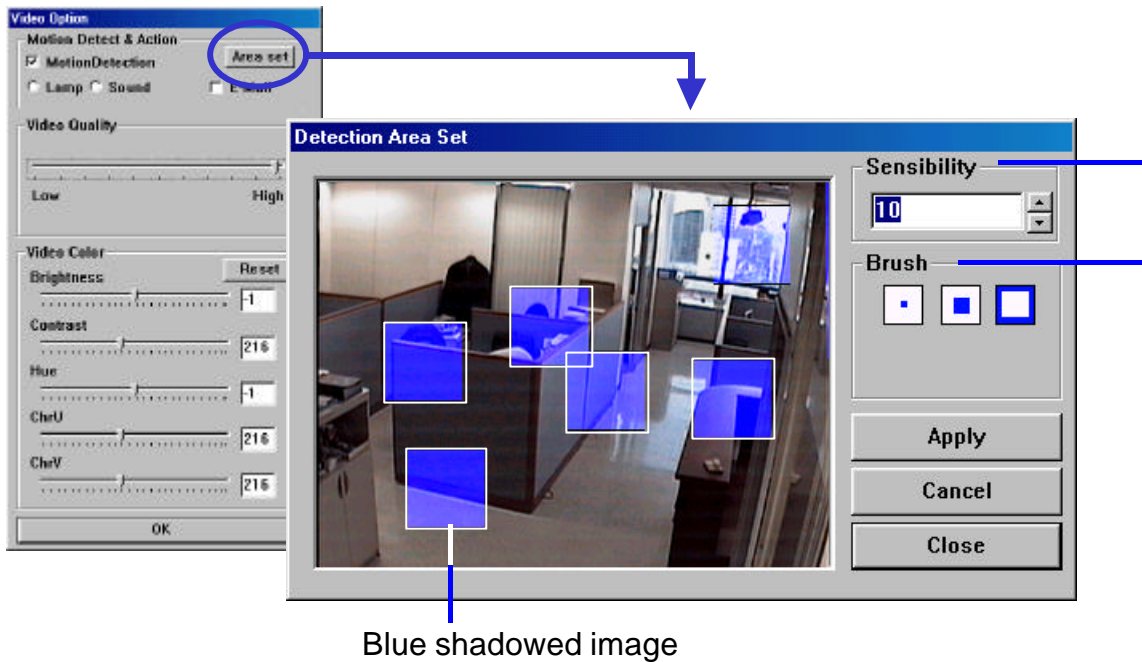
Color brightness and contrast level control

Setup of motion detection areas Explained in the next page.



The video option window can be prompted by clicking the right button of the mouse on the main screen and can be setup by each camera independently.

Setup of Motion Detection Area



Sensibility : The lower, the more sensitive to motion

Brush : Block size selection.



How to setup

- **Area setup** After selecting Brush option, click or drag the left button of the mouse on the screen.
- **Area setoff** After selecting Brush option, click or drag the right button of the mouse on the screen.

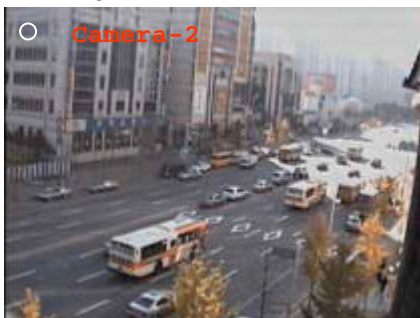


The blue-shadowed areas are blocked area in which motion can be detected.

All screens are blue shadowed as default.

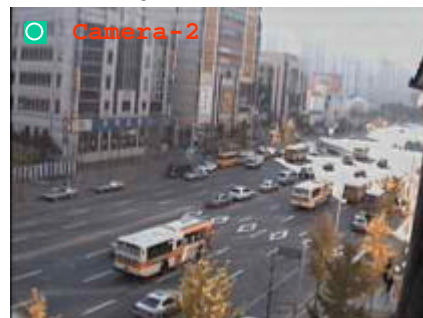
Recording mode in screen

Transparent Circle



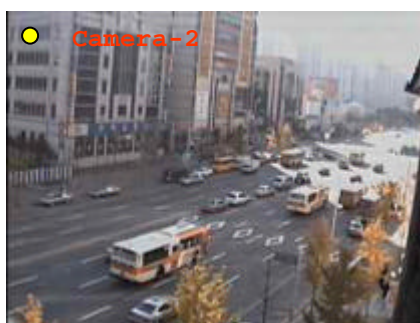
No recording

Green Square



Camera selected

Yellow Circle



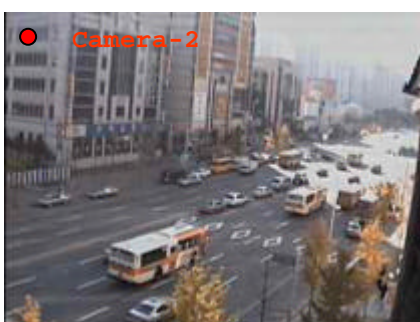
FPS Recording Mode

Green Circle



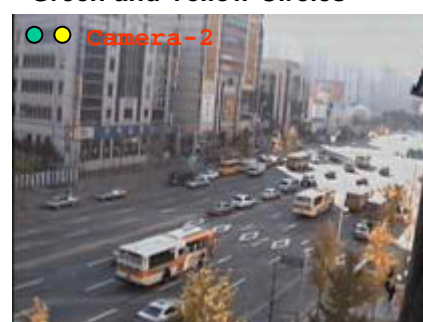
Motion Recording Mode

Red Circle



Full Recording Mode

Green and Yellow Circles



Motion Recording Mode and motion detected

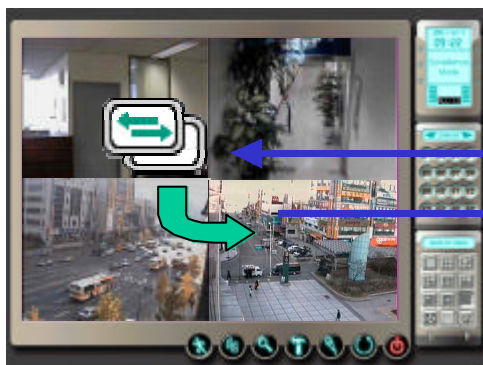
Switching Screens



Choose one screen to change



Left-button hold

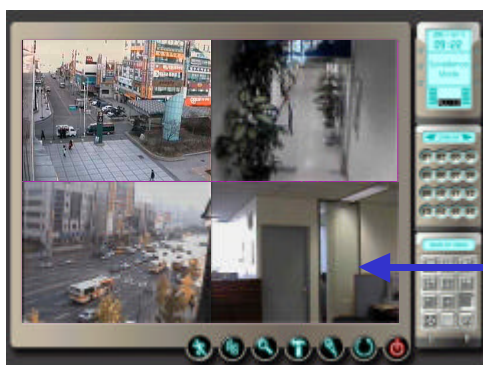


Mouse cursor will be changed to screen change icon

Drag and move icon to screen to switch



Release left-button



Function Buttons – Motion Detection

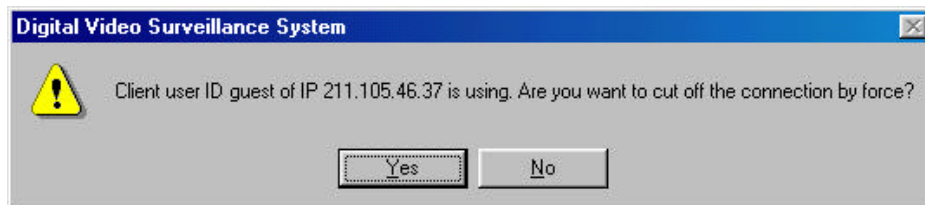


1. If motion detect mode is “On”, the button turns bright.
2. Motion can be detected by analyzing the change in the recorded digital image sequences.
3. Motion detect can trigger an alarm or sending an email message as determined conditions.
4. All the areas in the all the channels of cameras are set as the default “Motion detect area”.
5. Please refer to the page 27 for “Motion detect area” setup.

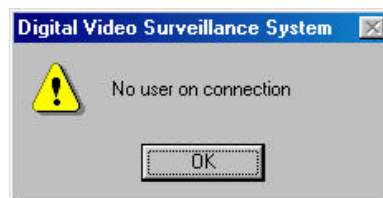
Function Buttons – Network View



1. Shows IP addresses of the remote client hosts connected to the server.
2. The server can disconnect the clients at will if the server becomes overloaded. In this case, the clients can not connect to the server until the server reopens the connection.



Client IP connected



No Client

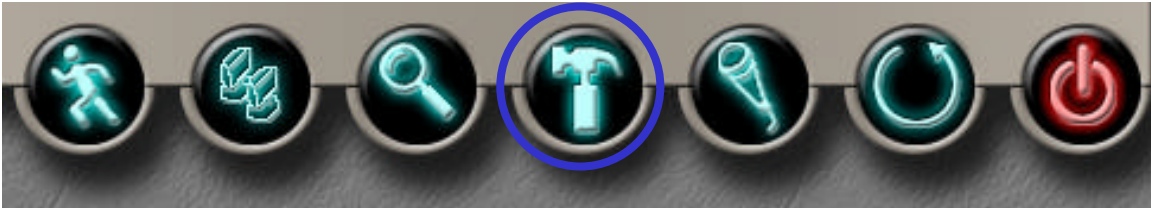
Function Buttons – Search



Search mode screen

1. Search mode screen will appear, but the recording is continuing while you are working in the search mode.
2. You can search by date, time or camera.
3. In the case of emergency, back up recorded images first before you work in the search mode.
4. Refer to the page 51~60 for detailed search procedure.

Function Buttons – Setup



1. You can setup following environment of the DVR server.
2. “Basic setup” is for basic factors for server and cameras.
3. “Network setup” is for networking environment factors setup
4. “Recording camera setup” is for recording mode setup and name of cameras.
5. “Surveillance mode setup” is for alarm and email messaging setup .
6. “Storage setup” is for hard disk and file directory setup.
7. “User registration” is for user ID and password information input.
8. “Schedule setup” is for recording schedule setup for each camera.
9. “Sensor schedule setup” is for sensor schedule setup for each camera.

Function Buttons – Microphone



1. Direct conversation between DVR server and the client PC is possible through the microphone and speaker even in the emergency situation without any other help of communication method.
2. The sound card with a full duplex and recording function is necessary for this function.

Function Buttons – Alternating Channel Display



1. When 1, 4, 9-channel display modes are effective, this button makes the respective number of channels alternate by the preset period of time.
2. The alternating period of time can be set from 1 to 100 second in the “**Basic Configuration**” section.
3. This function is not effective in the 16-channel display mode.
4. This function can be interrupted and any channel can be selected in the middle of this mode at any time by clicking the channel.

Function Buttons – Exit



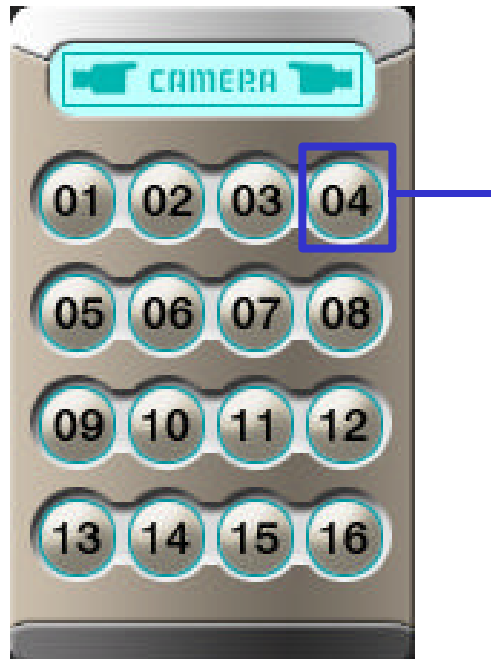
1. This button stops all the activities of the DVR including surveillance and recording.
2. You may need this function before you like to exit Windows.

Status Display

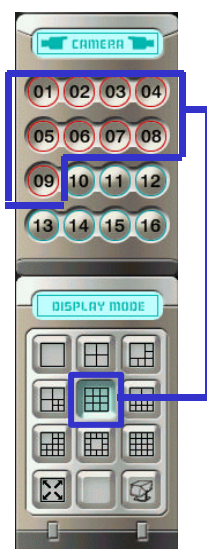


1. Button displays date and time.
2. Button displays which mode the window is.
3. Button displays selected HDDs and usage percent of selected HDDs.
ALL:13 13% is used in all HDDs
C:70 70% is used in HDD C:
HDD can be set with left-button click of mouse.
4. Button displays data storage usage as graph mode.

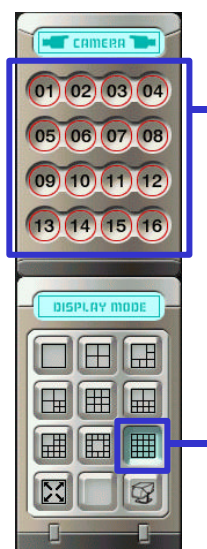
Camera Selection Display



1. Button displays number of camera and its status is as follows.

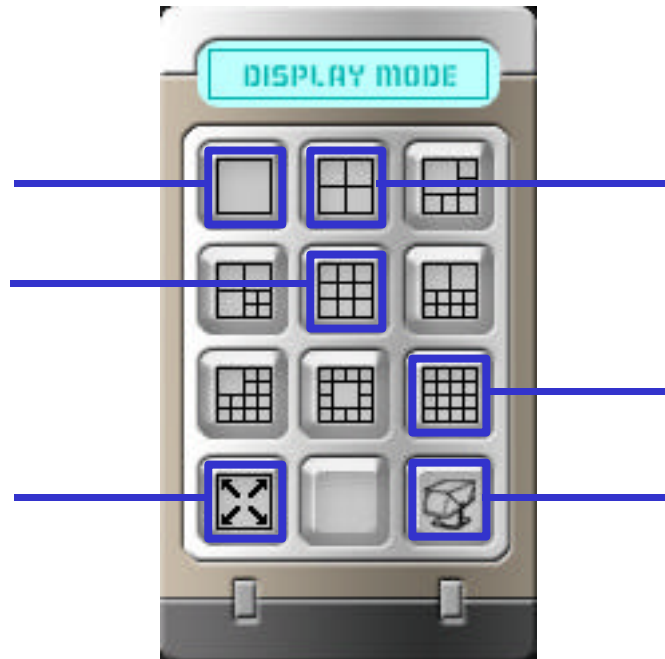


9 channels
selected



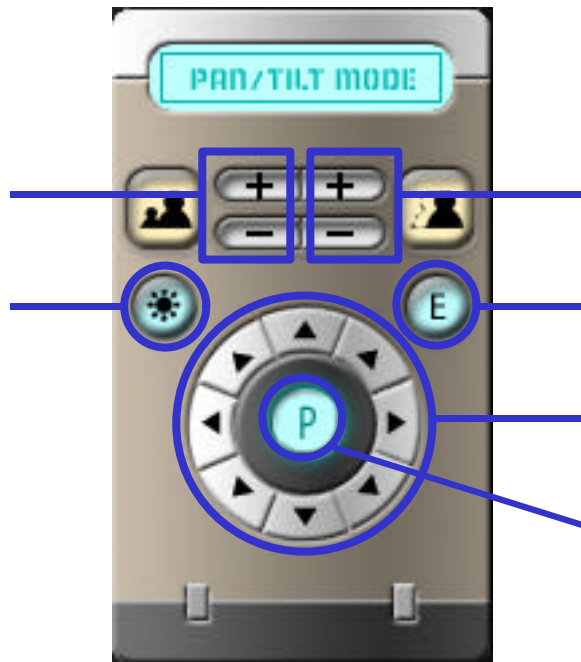
16 channels
selected

Display & Camera Control Panel



1. Button displays one channel on the screen with 800 x 600 resolution.
2. Button displays 4 channels on the screen with 400 x 300 resolution.
3. Button displays 9 channels on the screen with 265 x 200 resolutions respectively.
4. Button displays 16 channels on the screen with 200 x 150 resolutions respectively.
5. Button expands screen without frame.
6. Button activates "Pan/Tilt control of cameras" panel.
7. Other buttons display various display mode as shown on buttons

Pan/Tilt Control of Cameras



1. Because controlling mechanisms of Pan/Tilt/Zoom/Focus of various cameras are all different, please ask your dealer how to use this function correctly.
2. Button 2 is for zooming in(“+”) and zooming out(“-”).
3. Button 3 is for focusing in(“+”) and focusing out(“-”).
4. Button 4 turns on the camera light.
5. Button 5 is for exit to this Pan/Tilt control.
6. Button 6 is for pan/tilt function. Each button makes camera redirect to each direction.
7. Button 7 turns on/off of camera power.

