

## **USB Remote Surveillance System Quick Reference Guide**



**Receiver**



**Transmitter**

**Table Of Contents:**

Chapter 1: Introduction..... 4

Chapter 2: Minimum System Requirements..... 4

Chapter 3: Receiver Setup .....5

Chapter 4: Wireless Camera Setup..... ..9

Chapter 5: Using Amcap5a ..... ..10

Chapter 6: Customer/Technical Support ..... 12

Chapter 7: Copyright ..... 12

## **Federal Communications Commission (FCC) Statement**

This equipment has been tested and found to comply with the limits for a Class B digital device, pursuant to part 15 of the FCC rules. These limits are designed to provide reasonable protection against harmful interference in a residential installation. This equipment generates, uses and can radiate radio frequency energy and, if not installed and used in accordance with the instructions, may cause harmful interference to radio communications. However, there is no guarantee that interference will not occur in a particular installation. If this equipment does cause harmful interference to radio or television reception, which can be determined by turning the equipment off and on, the user is encouraged to try to correct the interference by one or more of the following measures:

- Reorient or relocate the receiving antenna.
- Increase the separation between the equipment and receiver.
- Connect the equipment into an outlet on a circuit different from that to which the receiver is connected.
- Consult the dealer or an experienced radio/TV technician for help.

You are cautioned that changes or modifications not expressly approved by the party responsible for compliance could void your authority to operate the equipment.

## **Chapter 1: Introduction**

Congratulations on your purchase of the USB Remote Surveillance System (Transmitter: CA-2000RF, Camlinc & Receiver: SG-W4A3, S-912RFB, Gateway, S-912RF). It allows you to connect up to 4 wireless cameras and 3 CCTV cameras to monitor your home, office, baby's room, parking lot, or warehouse. Over the Internet, users can remotely view what has been captured by the cameras, or have a realtime view of the cameras over a standard web browser. The USB Remote Surveillance System is easy to use and able to do real-time video capture, motion detection and video recording. With the USB Remote Surveillance System, your life will be more convenient and secure.

Please note that no antenna other than that supplied by the manufacturer shall be used with the device, and the use of a standard antenna jack or electrical connector is prohibited. If your device (SG-W4A3, S-912RFB, Gateway, or S-912RF) comes with a broken antenna, please do not attempt to fix it yourself, instead please contact the dealer you purchased this device from.

## **Chapter 2: Minimum System Requirements**

- IBM<sup>®</sup> or 100% compatible personal computer
- Available USB port

- Microsoft® Windows® 98/98SE/ME, or Windows 2000
- Pentium® CPU 166 MHz or higher
- 32 MB of RAM
- 12 MB or more hard drive space

### **Chapter 3: Receiver Setup**

Setting up your receiver (S-912RFB, SG-W4A3, S-912RF, or Gateway) is easy. Simply follow the steps below, and you will be ready to remotely monitor your home, warehouse, garage, and day-care center.

Connect your receiver to an available USB port on your computer, and the Hardware Wizard of Windows 98/98SE/ME/2000 will automatically detect this device.

- Once you see a dialogue box with “This wizard searches for new drivers for USB Composite Device” during the hardware setup, please do the following:
- Click “Next” to go to the next dialogue box
- When you see a dialogue box with “What do you want Windows to do?”, select “Search for the best driver for your device. (Recommended).” and click “Next”.
- When you are prompted by a dialogue box, “Windows will search for new drivers in its driver database..”, make sure there is a check mark beside “Floppy disk drives.” and click “Next”.

- Windows has found an update driver...choose “ The update driver USB S912RF Video Capture, AME Version 2.62”.
- During the driver installation, Windows may prompt you to insert your Windows CD-ROM because it couldn't find some specific data from the driver disk. When this happens, if you have your Windows CD-ROM, please insert it and direct Windows to copy the required files from your CD-ROM drive. (Click “Browse..” and select your CD-ROM drive) If you do not have your Windows CD-ROM available, you can still complete installation by the following steps:
- When Windows cannot find the file, ‘ks.sys’, please go to “Browse..”, and direct the search to where you installed Windows. In our case is C: drive.
- Then under C: drive, look for the “Windows” directory, and double click on it with your mouse.
- When you are in the “Windows” directory, look for the “system32” directory, and double click on it.
- Once you are in the “system32” directory, look for the “drivers” directory and double click on it, and there is your ‘ks.sys’ file. Click OK, then another OK to continue with the driver installation.
- You may get a prompt by Windows saying that it could not find the file ‘ksclockf.ax’ and asks you to insert your Windows CD-ROM. If you already have your Windows CD-ROM inserted, you will not get this prompt. If you do not have the Windows CD-ROM, go to “Browse..” and follow the steps above, but make changes to the following:

- When you are in the “Windows” directory, please replace the “system32” directory to the “system” directory.
- Once you are in the “system” directory, you will be able to find the “ksclockf.ax” file that Windows is looking for. Click OK and another OK to continue the driver installation.
- Just before you finish the drivers installation, you will be prompted that the file ‘stream.sys’ cannot be found (if you do not have your Windows CD-ROM inserted). Please follow the above steps, but make the following changes:
- When you are in the “Windows” directory, please select the “system32” directory and double click.
- Then select the “drivers” directory and double click, and there is your ‘stream.sys’ file. Click OK and another OK to continue the drivers installation.
- Now that Windows has finished the installation of USB S912RF Video Capture, click “Finish”.
- Windows will automatically show a dialog box with “This wizard searches for new drivers for USB Composite Device”.
- Click “Next” to go to next dialogue box
- When you see a dialogue box with “What do you want Windows to do?”, select “Search for the best driver for your device. (Recommended).” and click “Next”.
- When you are prompted by a dialogue box, “Windows will search for new drivers in its driver database..?”, make sure there is a check mark beside “Floppy disk drives.” and click “Next”.
- Windows will automatically show the message to search for the

USB S-912RF Audio Capture, AME Version 2.62". and you will see something similar to " Location of driver: A:\CA506AAF.INF", click " Next " and Windows will automatically install the drivers for you.

- During the driver installation, Windows may prompt you to insert your Windows CD-ROM because it couldn't find some specific data from the driver disk. When this happens, if you have your Windows CD-ROM, please insert it and direct Windows to copy the required files from your CD-ROM drive. (Click "Browse.." and select your CD-ROM drive).
- If the file "ca 506aaf.sys" can not be found on the Windows 98 Second Edition CD-ROM, please click "Browse" to find the file in " A:\ " and click " ok ".
- Now that Windows has finished the installation of USB S912RF Audio Capture, click "Finish".
- Again, Windows will automatically show a dialog box with " This wizard searches for new drivers for USB Composite Device" .
- Click "Next" to go to the next dialog box
- When you see a dialogue box with "What do you want Windows to do?", select "Search for the best driver for your device. (Recommended)." and click "Next".
- When you are prompted by a dialog box , " Windows will search for new drivers in its driver database..", make sure there is a check mark beside " Floppy disk drives." And click " Next".
- Windows will automatically show the " USB S912RF Video

Capture, AME Version 2.62.” and you will see something similar to “ Location of driver: A:\CA506AV.INF”, click “ Next “ and Windows will automatically install the driver for you.

- During the drivers installation, Windows may prompt you to insert your Windows CD-ROM because it couldn't find some specific data from the driver disk. When this happens, if you have your Windows CD-ROM, please insert it and direct Windows to copy the required files from your CD-ROM drive. (Click “Browse...” and select your CD-ROM drive).
- If the file “ CA 506A.INI” can not be found in CD-ROM, please go to “ A:\ “ to find it.
- When you got a dialog box prompting, “ Windows has finished installing the software .”, click “ Finish” to exit setup.

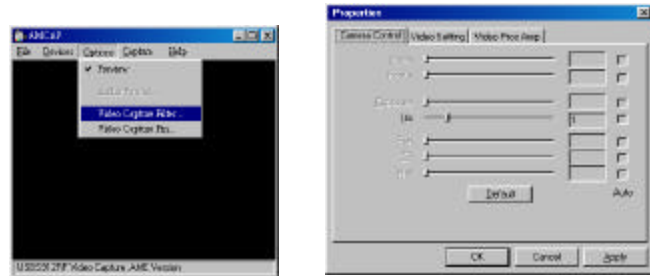
#### **Chapter 4 Wireless Cameras Setup**

The USB Remote Surveillance System can connect up to 4 wireless cameras and 3 CCTV cameras. In order to receive the 4 different radio frequencies from 2.4 GHz wireless cameras, you have to manually adjust the camera channels by turning the switch dial on the top of the wireless cameras. (from 1 to 4)



## Chapter 5 Using Amcap5a

Once you start the application, Amcap5a, you will see two windows pop up, as shown below. **Note:** When you do not have any analog devices, such as CCTV camera, wireless camera, TV, VCR, camcorder etc. connected to your USB remote surveillance system, the screen is black (see below). Once you connect 4 wireless cameras and 3 CCTV cameras to the USB remote surveillance system, you are able to view the video of these cameras from the screen. You can choose to view the video of the 4 wireless cameras and 3 CCTV cameras separately by software channel selection.



USB Remote Surveillance System

To view 7 different video signals separately, please go to the “Option” icon and click “Video Capture Filter”. You will see a dialogue box, please drag the bar under the “Iris” in the Camera Control left and right to view each channel accordingly.

**“Capture” button:**

If you would like to live capture the video, click on the “Start Capture” button, and Amcap5a will prompt you to name the AVI file you are about to save. Click on “Stop” to finish recording.

**“Snap” button:**

If you would like to take an instant picture from what you are seeing, whether or not it is from your cameras, or TV, VCR, camcorder, etc., just click on “Snap” (from the bigger window) and Amcap5a will save the file as a BMP file format.

There are also many functions in this application, Amcap5a, such as adjusting the Brightness, Contrast, Color, etc., that you can familiarize yourself with after you start using your USB Remote Surveillance System. Due to the limited space here, we are not going to go further into details of using this application.

## Chapter 6 Customer/Technical Support

If you have any questions or concerns with your USB Remote Surveillance System, please feel free to contact our Technical Support at [ame@ame-group.com](mailto:ame@ame-group.com), or you may visit our website at [www.ame-group.com](http://www.ame-group.com) or [www.vcam.com.tw](http://www.vcam.com.tw) for more updates.

## Chapter 7 Copyright

This quick reference guide is copyrighted by AME Group with all rights reserved. Under the copyright laws, this quick reference guide may not be reproduced in any form, in whole or part, without the prior written consent of AME Group.

- All brand name and trademarks are the property of their respective owners.

Copyright©2001 AME Optimedia Technology Co., Ltd. All Rights Reserved.  
Version 1.0 (DC) June 2001  
VGrab is a trademark of AME Optimedia Technology Co., Ltd.  
All trademarks and logos shown herein are the property of their respective owners.