

Photographs of P7QRHV-2 Mobile Phone

SEPT 2005

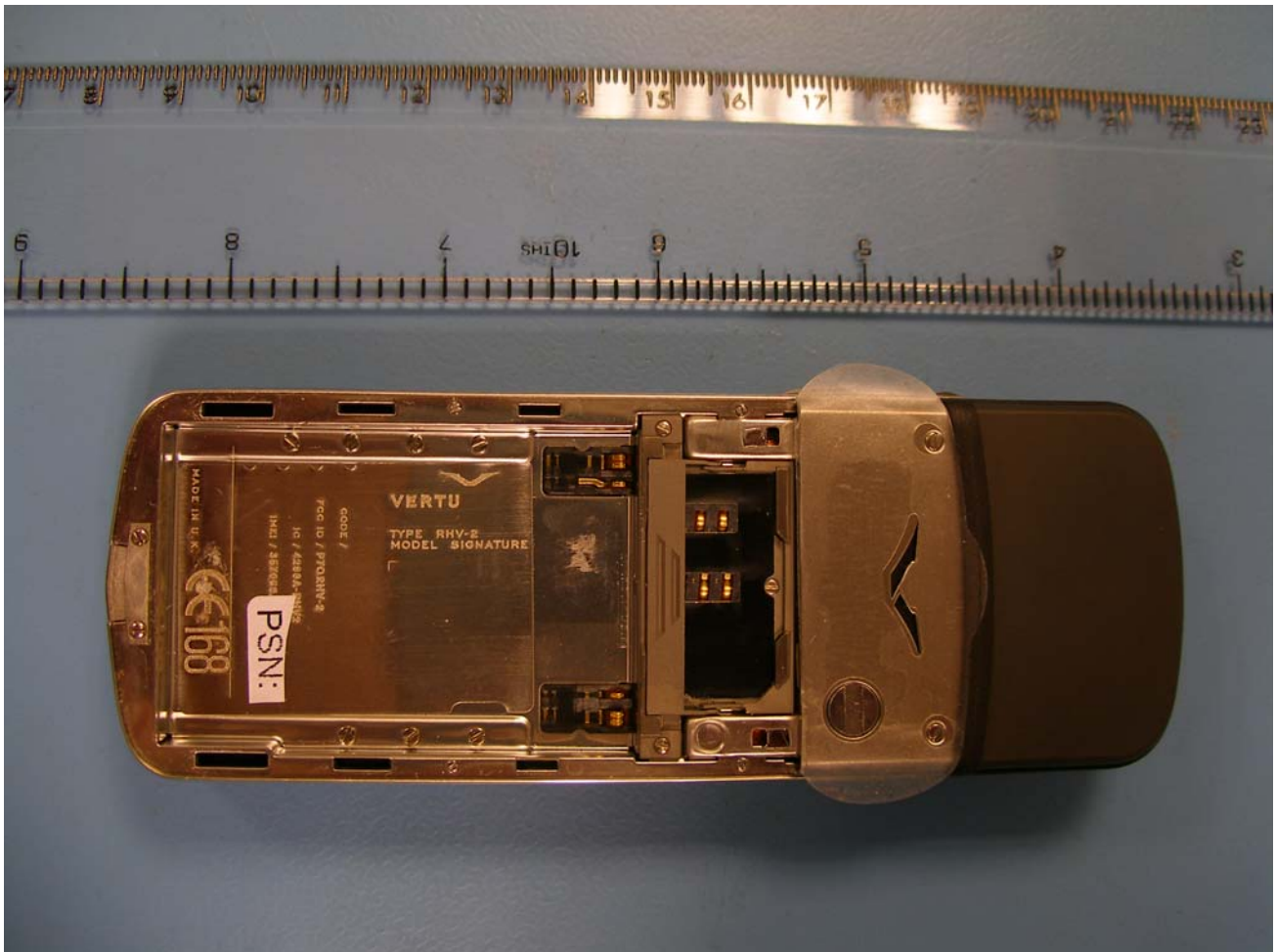


Exhibit 1: INTERNAL View of Vertu FCCID: P7QRHV-2 ,
battery cover removed to show location of

TYPE DESIGNATION LABEL, and SIM card holder.

Photographs of P7QRHV-2 Mobile Phone

SEPT 2005

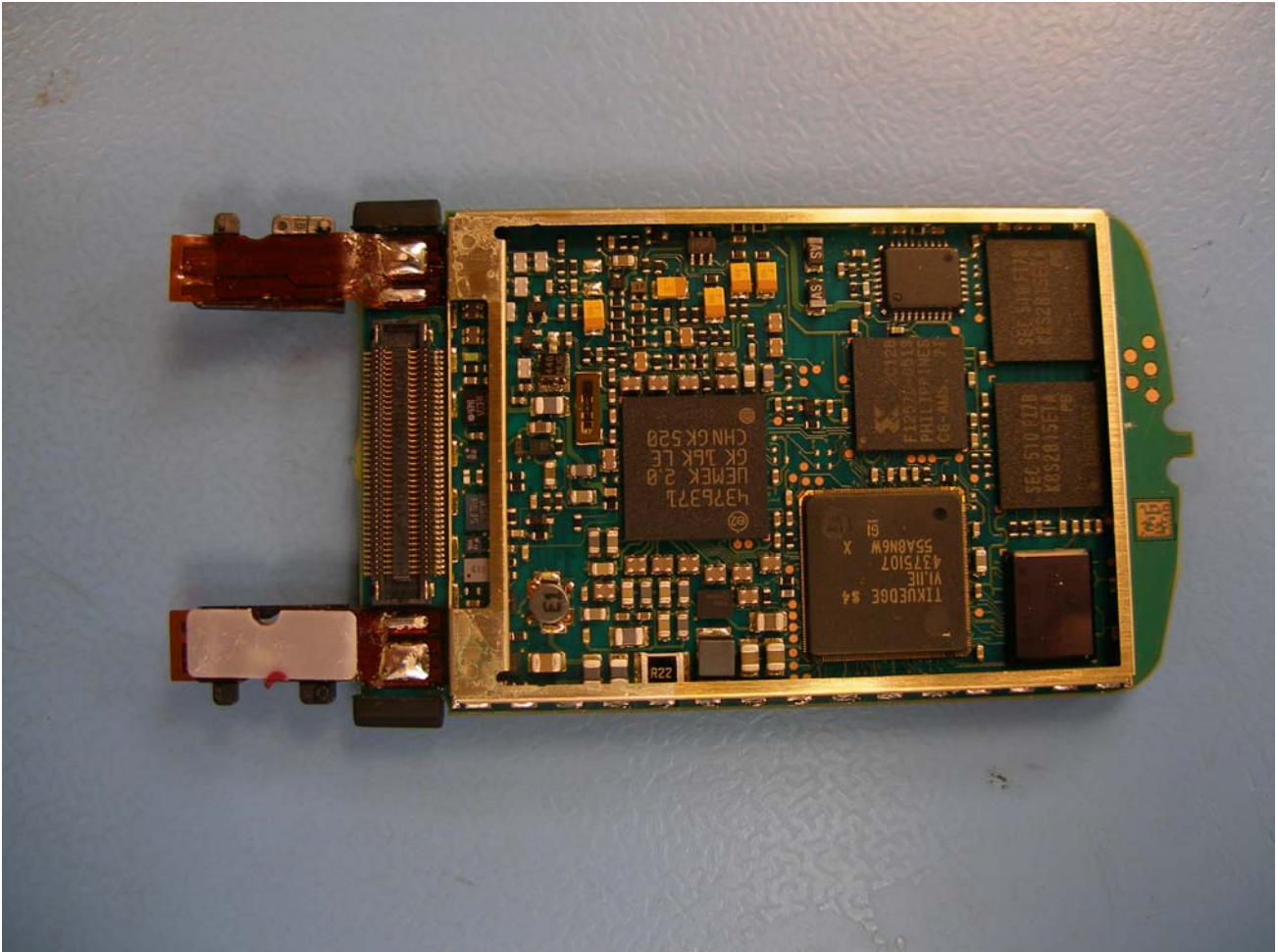


Exhibit 2: INTERNAL VIEW of Vertu FCCID:P7QRHV-2
Showing Circuitry.

Bottom View of Printed wire Board, with removable shielding
cans removed to show baseband circuitry.

Photographs of P7QRHV-2 Mobile Phone

SEPT 2005

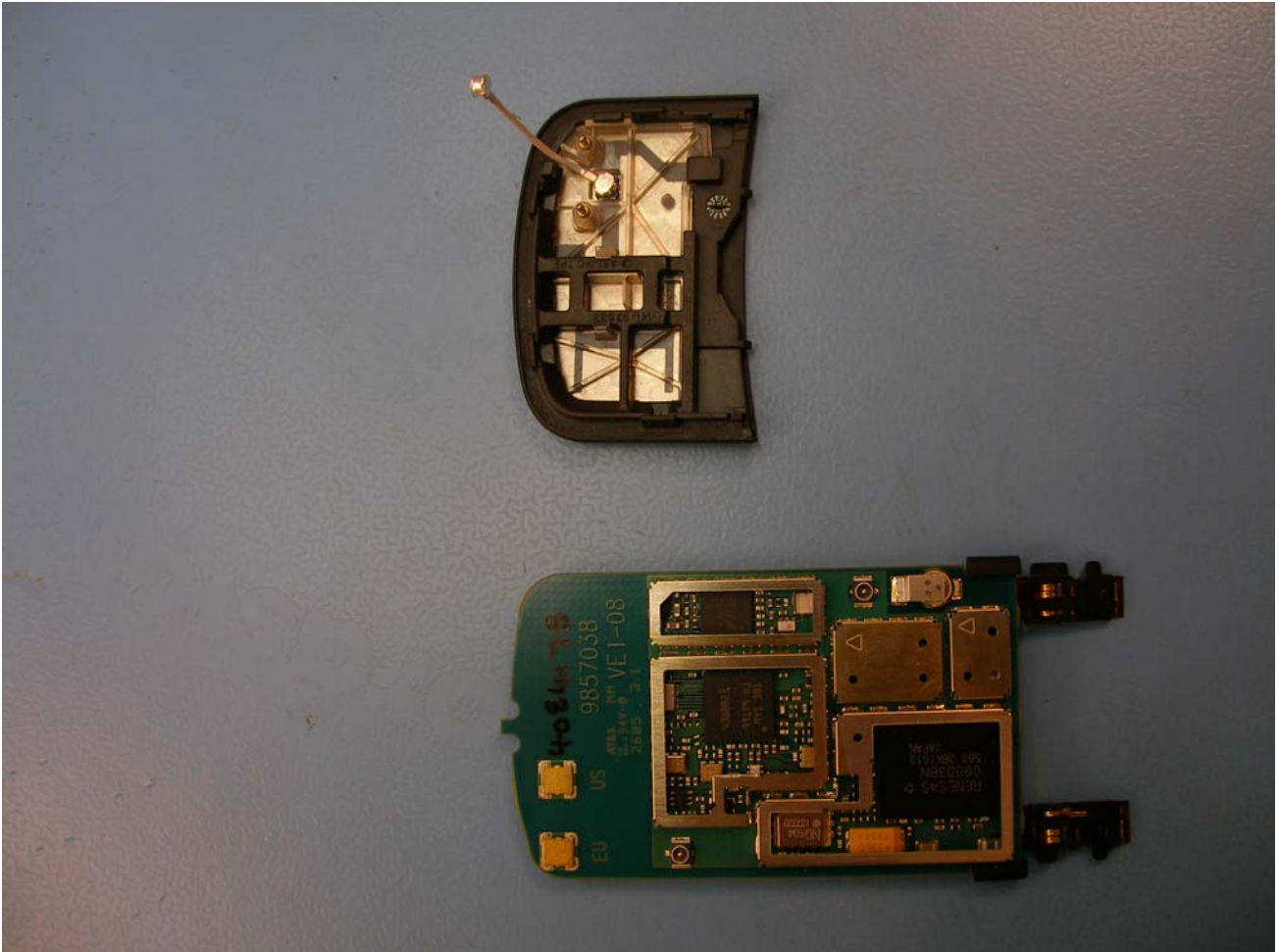


Exhibit 3: INTERNAL VIEW of Vertu FCCID: P7QRHV-2 .

Top View of Printed Wire Board showing RF circuitry, adjacent to associated RF Antenna assembly with printed element .

All screening cans have been opened, where removable.

Photographs of P7QRHV-2 Mobile Phone

SEPT 2005

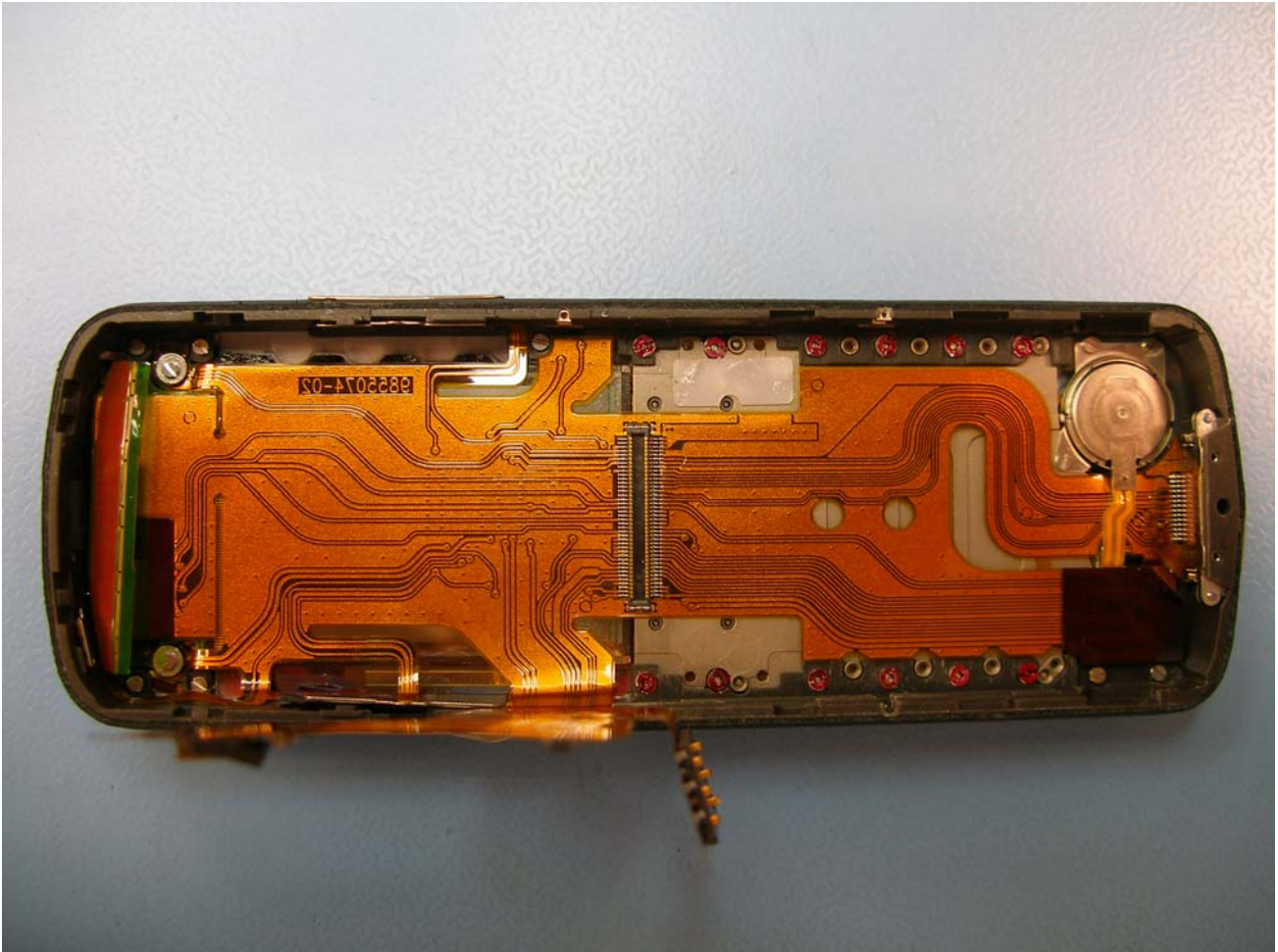


Exhibit 4: INTERNAL VIEW of Vertu FCCID: P7QRHV-2 showing reverse of display module and interconnections.