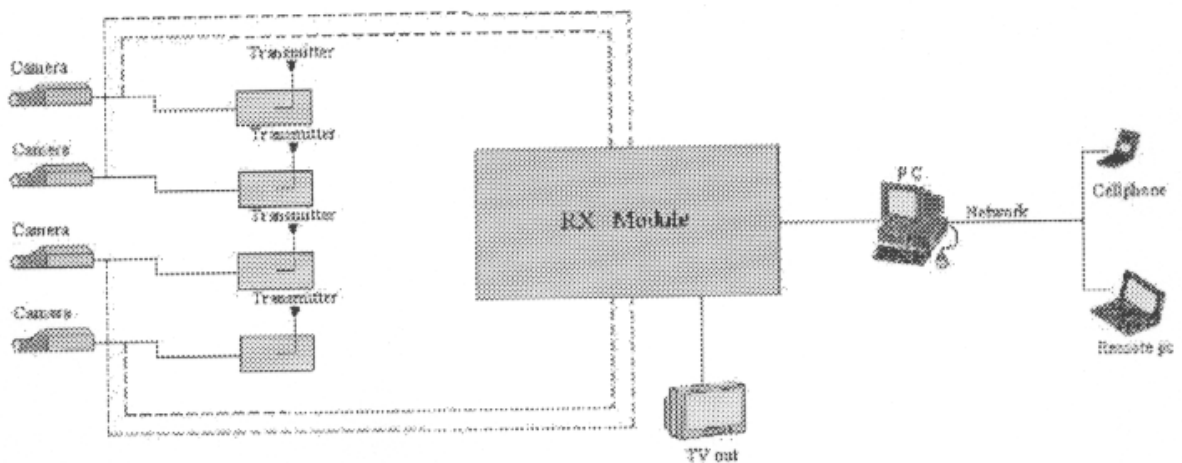


## System Overview

The WeiYang Security Surveillance System (WYSSS) has two application modes, which comply with the Plug-and-Play function of the Microsoft Windows operation systems.

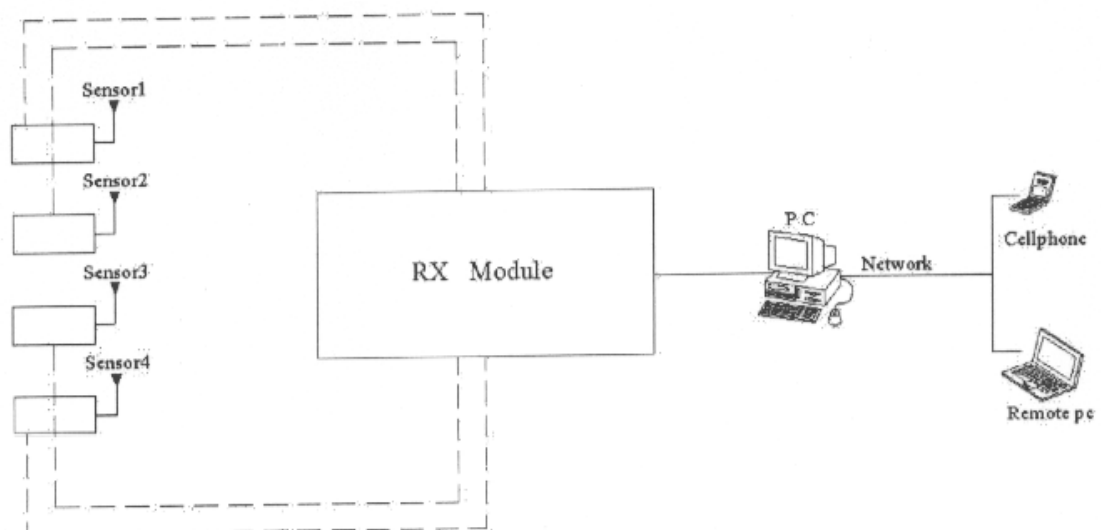
- RF Video Mode:

The video signals of one to four cameras are transmitted with radio frequency. A RX MODULE receiver near the PC circularly captures the video signals of the cameras by changing the RF channel in sequence. These video signals are then sent to the PC through a USB connector. At the same time, the PC is also informed the corresponding RF channel of the video signal.



- Sensor mode:

The sensor signals of one to four sets are transmitted with radio frequency and then sent to PC through RX MODULE, and the user will be immediately informed by the e-mail when an alarm occurs.



( PIR sensors or window sensors or shock sensors..... )

The WYSSS has the following specifications.

- The user can monitor the camera videos on the server PC.
- The camera videos can be monitored through Internet and simply using IE or Netscape web-browser. The alarm recorder is also dynamically shown in the browser.
- The Internet transmission of the image is in JPEG format. The compression rate of JPEG is adjustable, so that the user can use high compression rate in sacrifice of some image quality when Internet is jam.
- The system can detect the moving objects and generate alarm signals.
- The user will be immediately informed by an email when an alarm occurs.
- An alarm record file saves the alarm events.
- Videos are recorded as AVI files in a compression form and can be accessed by Internet.
- Each AVI file records the video of a fixed time interval. The time interval can be selected, so that the size of an AVI file is not too large and then suitable for Internet access.
- One to four sensors are transmitted with radio frequency, and a ball sign will appear in the PC screen when a sensor is tricked.
- Affright function  
The sensor system automatically generates a 110 dB alarm sound to affright ingoing persons.
- UPS function  
Uninterruptible power supply is provided for the main transmitter, so that the system still works even if the AC power supply system is shut down.
- Night-viewing function  
Video signals can be captured by day as well as by night.

# System Requirements

- Pentium II CPU or above
- Operation system: Windows 98, ME, 2000
- 64MB Dram
- 12MB hard disk space for the programs
- 10GB hard disk space for video recording
- One USB port
- CD Rom player

## Install and Remove

- Install the WYSSS software  
Insert the software CD in the CD Rom and always click [NEXT] to finish the installation of the WYSSS application software.
- Remove the WYSSS software  
Use [Add/Remove Programs] under [Control Panel] to select the program WYSSS, and then click [Remove] to remove the application program.

## **Hardware Drive Installation**

- If you never install multimedia program, you need install it by Windows 98 CD driver in advance.
- Windows 98/Me/2000 Hardware Drive are installed the same step.

## Important Notices

It is very important to know the following points before using the WYSSS software. If the user does not follow the below rules, **the WYSSS software may work abnormally.**

- After installation of the WYSSS hardware, please click right button of the mouse at [start]>[action]>[open]>[review] click[review], go to CD-R index and designate installation index:

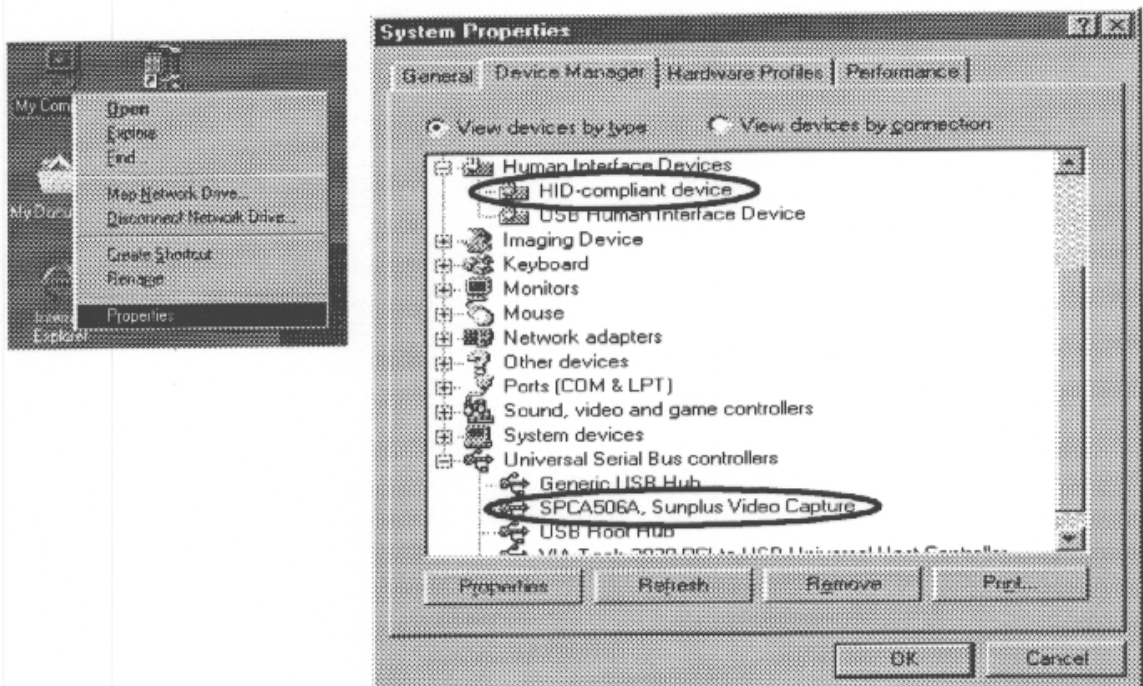
X : \PV321C\DRIVER\WIN98 或 WIN2K (X : represent CD-R) install setup.exe

### **\*\*Note\*\***

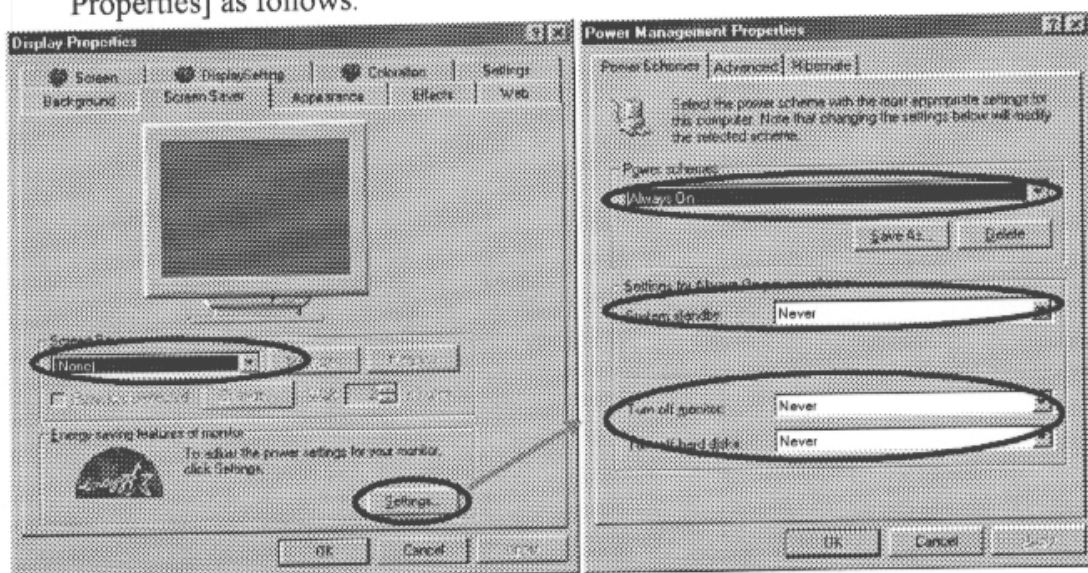
**Please install the driver of PV321 in advance, and then restart computer.. Plug-in USB to interface of computer , and then computer can detect PV321C Capture correctly.**

After restarting company, the system can be automatic research for SPCA506A, Sunplus Video Capture.

You also can go to [My Computer] and select [Properties], and then [Device Manager], finally check if there are [HID-compliant device] and [SPCA506A, Sunplus Video Capture]. If they do not appear, you should repeat the hardware setup.

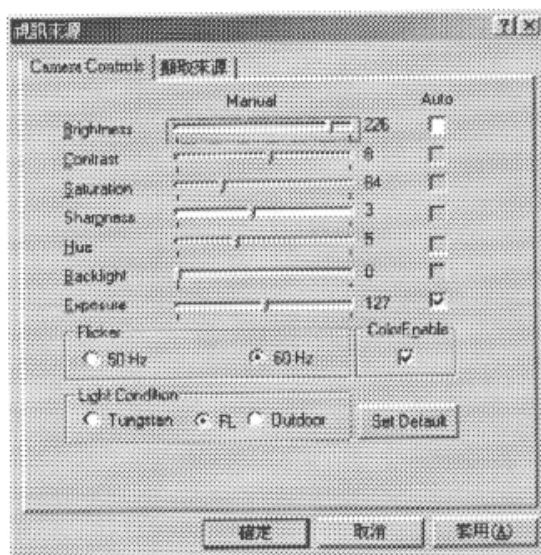
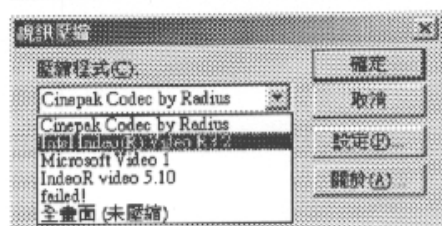
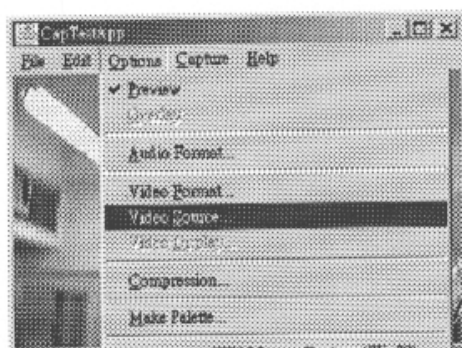


- Do not use monitor screen saver. Always let the computer on. Set [Display Properties] as follows.



- If you have installed an antivirus software, you should delete all scheduled tasks and close the live update.
- Close all application software, if you want to select the no-stop recording.
- If the WYSSS software is suspended and has no response, please restart the computer and turn off and then turn on the power of the receiver box of the WYSSS system. Otherwise, the WYSSS may not work normally.
- Test video.

Use the execution file CAPTEST.EXE in the CD to test the video signal. Double click CAPTEST.EXE, it will prompt the window as follows. Select [Options]→[Compression], and then see if there is the Intel Indeo® Video R3.2 in the video compression window. If there is no, the user should select [Options]→[Video Source] and adjust any item in the [Camera Controls] in the video source window. This should be done repeatedly until the Intel Indeo® Video R3.2 is in the video compression window.



## User's Guide and Settings

The application software of WYSSS has a setting wizard to guide the user to easily make all settings. All setting parameters except [Recording Compression Format] can be saved in a user's assigned file, which can be directly recalled at the next time.

In the following, **Click the Button** means to move the mouse pointer to the Button and click the left button of the mouse.

- **First Step**

Remove all USB type web cam from the computer and plug in the WYSSS receiver to the computer. The WYSSS will capture the other video source if there is any web cam plugged in.

- **Setting Wizard**

Once the application software is executed, the setting wizard is automatically prompted on the screen, which guide the user to make the following settings in sequence:[Home Page Setting], [E-mail Setting], [Recording Mode Setting], [Moving Object Detection Setting], and [Save Parameters].

## ● Home Page Setting

The window of the [Home Page Setting] is shown as follows.

Home Page Setting

☐ Default

☒ Setting File

IP:


Web Site:

User Name:

Password:

Compression Rate:  H L

LOGO:



[Default]: Use the system default values for the setting parameters.

[Setting File]: Call a file that previously saved the setting parameters. The software provides four files (User1, User2, User3, and User4). However, the user can still choose [Other] option and click the icon of [Open File] to find a special file that previously saved the parameters. As was mentioned above, [Selection of Camera] and [Recording Compression Format] cannot be saved, so the user still should make these two settings.

[IP]: The Internet protocol address of the server computer, which is automatically found out by the software.

[Home Page]: The web site address of the software, which is also automatically generated by the software. Indeed, it is the IP address plus “/index.htm”.

[User's Name]: The ID to enter the web site. It can be any combination of the alphabetic and Arabic number. The number of letters is not restricted.

[Password]: The password to enter the web site. It can be any combination of the alphabetic and Arabic numbers. The number of letters is not restricted.



[LOGO]: The user can select any image file in JPG or BMP with the size of 160x120 pixels as the home page logo. The default is the trade mark of Wei Yang Co.

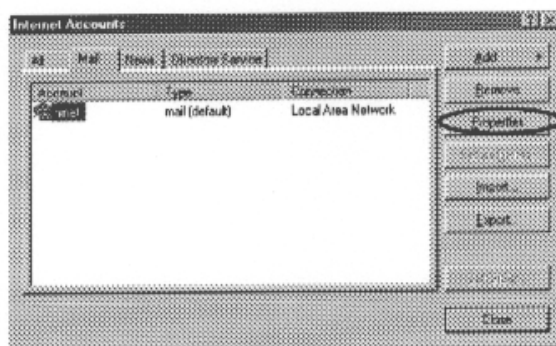
[Compression Rate]: The compression rate of the video to be send by web server. Higher compression rate requires less transmission time but has worse picture quality.

As the user has filled out all settings of this window, the button of [Next] is then prompted. It is suggested to press [Next]. If [Main] is chosen, the setting wizard will be immediately closed and the main window appears. However, a warning window of [Setting is not completed] will appear before go to the main window.

- E-mail Setting

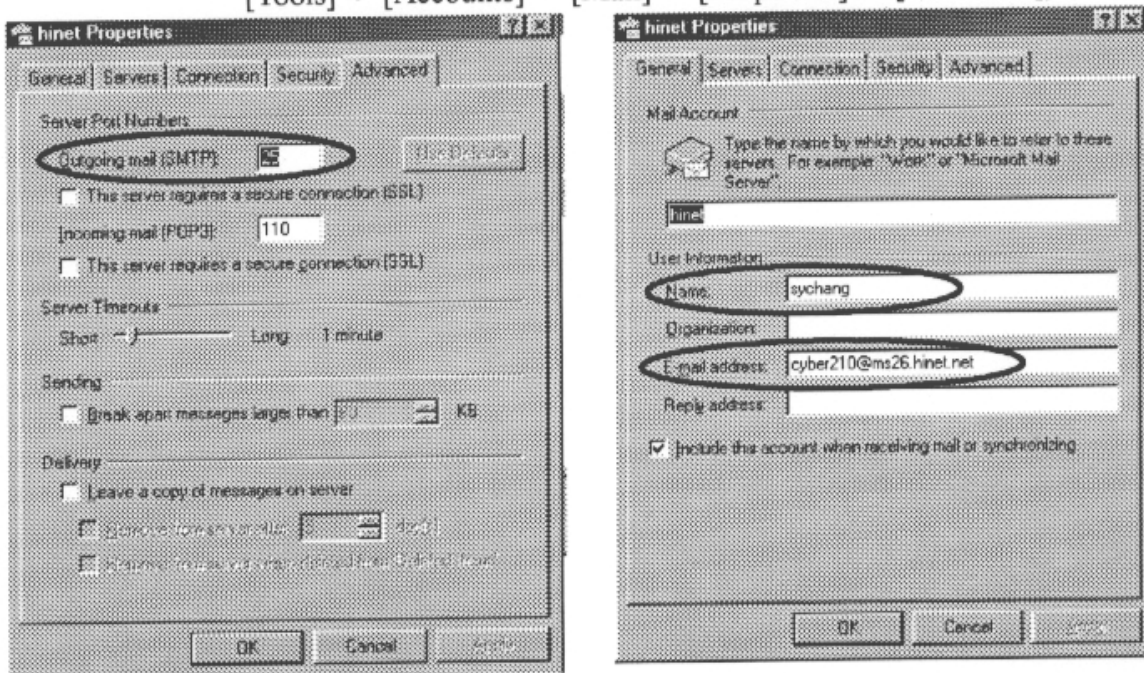
The second setting is the [E-mail Setting], which is shown in the following figure. When a moving is detected, an alarm is triggered. At this moment, an alarm notification will be sent out by email.

[SMTP]: The outgoing mail (SMTP) server. Please refer to the usage of Outlook Express (open [Outlook Express] and click [Tools] -> [Accounts] -> [Mail] -> [Properties] -> [Servers]).



[Account]: The user's account name in the SMTP server (see [Servers] under [Outlook Express]).

[Outgoing Port]: The server port number for the outgoing mail. Normally it is 25. Please refer to the usage of Outlook Express (open [Outlook Express] and click [Tools] -> [Accounts] -> [Mail] -> [Properties] -> [Advanced]).



[Sender Name]: The name of the sender (see [General] under [Outlook Express]).

[Sender Add]: The e-mail address of the sender (see [General] under [Outlook Express]).

[Receiver Add]: The e-mail address of the receiver.

[Cc]: The receivers of the mail copies.

[Subject]: The subject of the email. The default is "Alarm!"..

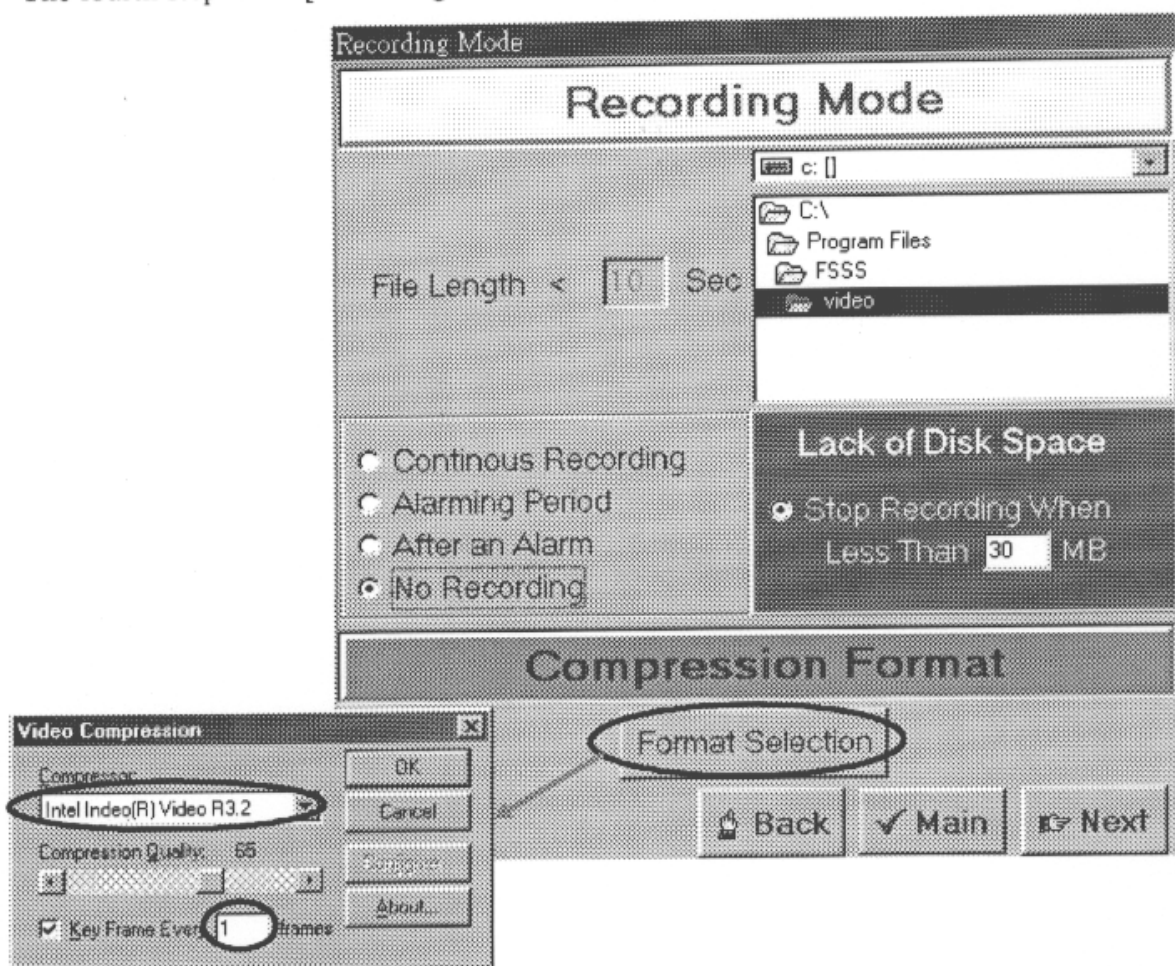
[Attached File]: The default file is "alarm-letter.jpg", which is the image file captured just after the alarm is alerted. Usually, it is recommended not to attach a file for the high priority to send out the email.

[Context]: The default is "Alarm!!!". It is suggested as short as possible.

As the user has filled out all settings of this window, the button of [Next] is then prompted. It is suggested to press [Next]. If [Main] is chosen, the setting wizard will be immediately closed and the main window appears. However, a warning window of [Setting is not completed] will appear before go to the main window.

## ● Recording Mode Setting

The fourth step is the [Recording mode Setting].



[File Length]: The maximum length of each video recording file. The unit is second. This is fixed to 10 sec and cannot be changed.

[Folder]: The folder to save the video recording files. The default is the subfolder "Video" under the execution folder of the software. The name of the recording file is *Vn-hour\_min\_sec(month.day.year).avi*. For example, "V2-15\_4\_0(1.3.2002).avi" is the video of Camera 2 at 15:04:00 on January 3<sup>rd</sup>, 2002.

[Mode]: For no-stop recording from the start please select [Continuous Recording]. The option of [Alarm Period] means that the video only in the alarming interval will be recorded and the recording stops once the alarm is released. If [After an Alarm] is selected, the no-stop recording starts after the first alarm event happens. [No recording] disables the recording ability.

[Lack of Disk Space]: The recording will be stopped when the free space of the hard

disk to record the video is less than the amount MB that the user specifies.

[Compression Format]: It is recommended to select “Intel Indeo (R) Video R3.2”, which is though not the best compression format, but can be played in all operation system of PC. If no compression format is selected, the size of the video file will be very large, and not suitable for the Internet transmission. Note also that it is suggested to set the key frame every “1” frame.

As the user has filled out all settings of this window, the button of [Next] is then prompted. It is suggested to press [Next]. If [Main] is chosen, the setting wizard will be immediately closed and the main window appears. However, a warning window of [Setting is not completed] will appear before go to the main window.

- Moving Object Detection Setting

The fifth step is the [Moving Object Detection Setting].

Detection Parameters

## Moving Object Detection

☒ On ☐ Off

Sampling Rate : Every  Frame

### Detection Parameters

Ratio of Moving Pixel  %

Optic Tolerance

Alarm Siren

☒ Mute ☐ Siren

☒ Synch Event Interval  Min

E-mail Interval  Min ☐ Disable

Back Main Next

[On/Off]: To turn on or off the detection function for moving object. When a moving object is detected, an alarm event is generated, which will be shown on the main window and saved is a file named “alarm-record.txt” in the same directory as that for video recording files.

[Sampling Rate]: The software analyzes the video very  $n$  frames. If  $n=1$ , then every frame is taken into account for the moving object detection.

[Detection Parameters]: These two parameters are used as the criterion for triggering the alarm. An alarm event is generated when the [Ratio of Moving Pixels] over the total pixels is over the specified value. The difference of the brightness of a pixel in the sequential frames is over the [Optic Tolerance], this pixel is seen as a moving pixel.



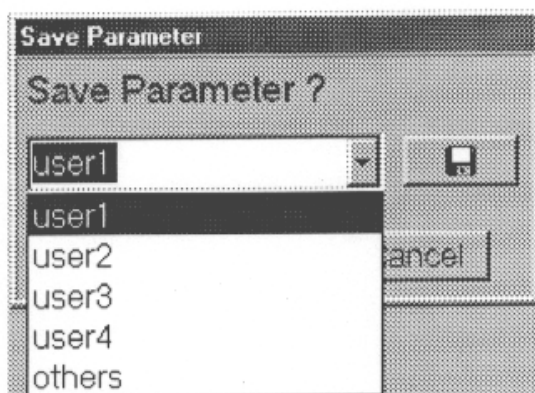
[Alarm Siren]: Select [Mute] to disable the siren. In the [Siren] option, there are five default siren files to be selected. However, the user can also select his own sound file for the siren by select [Others] and clicking the icon of [Open File].

[Event & E-mail Intervals]: The [Event Interval] is used to restrict the next alarm event to be generated in the time interval after the present alarm is released. The [E-mail Interval] asks the minimum time required to send the next email. If the [E-mail Interval] is greater than [Event Interval], some email of the notification of the alarm event will not be sent. It is then recommended to select the [Synchronization] mode, which ensures that every alarm event generates an email.

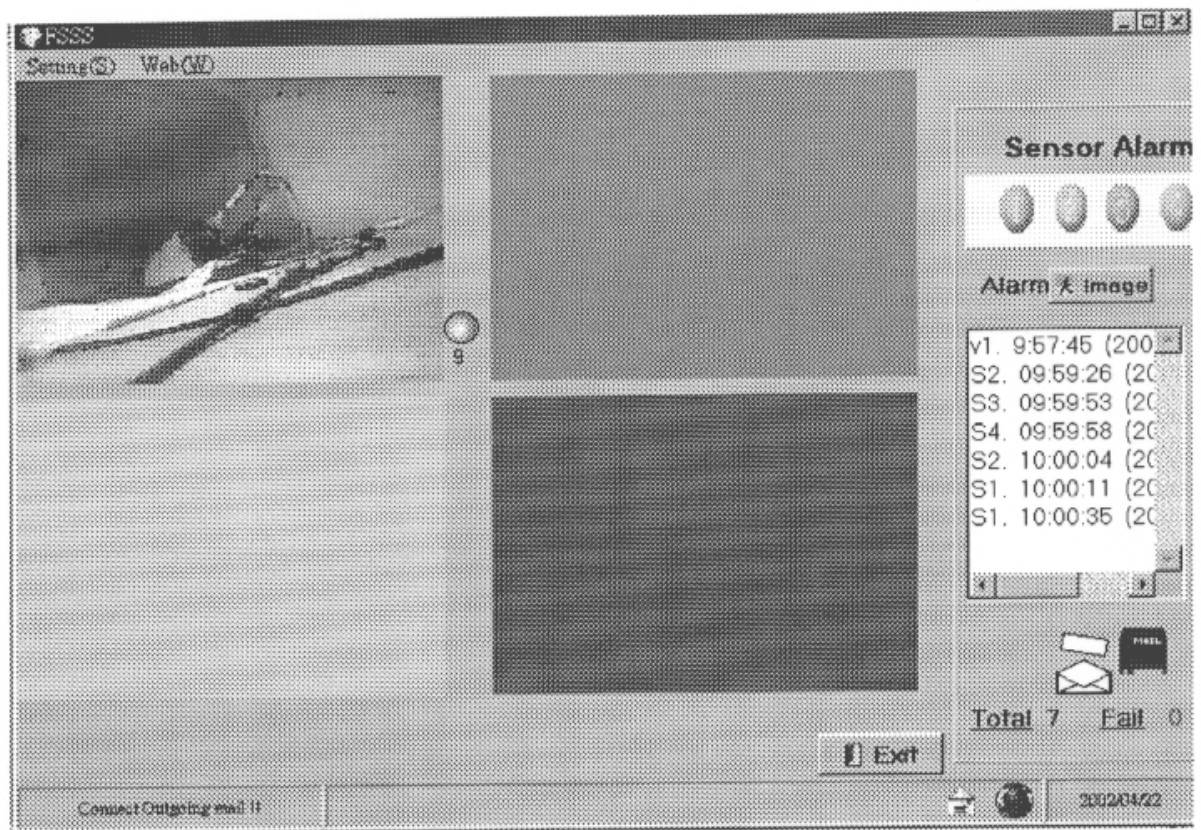
[Disable]: This will disable the function to send e-mails if this is selected.

As the user has filled out all settings of this window, the button of [Finish] is then prompted. It is suggested to press [Finish]. If [Main] is chosen, the setting wizard will be immediately closed and the main window appears. However, a warning window of [Setting is not completed] will appear before go to the main window.

When click [Finish], a [Save Settings] window is prompted. The user can save the setting parameters just filled in a specified file. The software provides five default files: User1, User2, User3, User4, User5. Of course, the user can click [Cancel] to abort saving.



## Main Window





- The box of alarm events will show at least 10 latest alarm events. Click [Pictures] to see the captured images of the moments at which the latest 10 events happened.
- The pull-down menu [Setting] provides the way to reset the parameters, while the [Web] is used to switch on and off the web site.
- There are three icons in the bottom bar to indicate the current status about recording, e-mail, and web-site. The message of [Fail to send mail] denotes that there is some problem to send e-mails, and the user should check the e-mail setting parameters.
- Total+figure is meaning that how many e-mail send out sucessful successfully , Fail is meaning e-mail send out unsuccessfully.
- There are four balls with number 1~4. The appearance of each ball in the main window denotes the corresponding sensor being triggered and the happening time will also be recorded in the alarm events box and the alarm record file.
- Click [ Exit] escape main window.



## Important Safety Instructions

This manual is intended to provide the safe and correct use of the product in order to reduce the risk of personal injury and property loss. The following symbols are used in these instructions:

	Items for improper use may cause serious damage and injury.		Items for improper use may cause some harm and danger.
Warning		Attention	



Warning

Pay attention to some abnormal status.



- Beware of any smoking and smelly odor as they may further lead to fire or electric shock. Turn off the power switch immediately and unplug the AC adapter from the outlet.

Do not attempt to disassemble or modify the product.



- This can result in the risk of fire or electric shock.

Treat this unit with care.



- If the product is dropped and damaged, unplug the AC adapter immediately.

Basic Information of Installation



- This security unit is used to prevent burglaries mainly, which is unable to stop breaking in.
- We are not responsible for any damage or injury caused by burglaries.



Warning

Safety Notice during Operation



- We take no responsibilities for any failure of this security unit due to data disappearing or changing from your computer.
- We are free from any liability if computer data missing or bodily injuries resulting from the use of this security unit.
- If you are going to leave this security unit unused for a long period of time, please remove the battery. For best performance, we recommend that you can check the battery and the function of this unit at least one time in a month.

Product Care:



- Do not install this security unit on the walkway, and make sure the place you position the power cable that will not be stepped on or tripped over.
- Treat your security unit with care, and avoid dropping, knocking or shaking.
- Avoid placing your security unit under direct sunshine, or close to any heat source.
- Do not expose it to liquid, and keep your security unit in a damp free place.

Safety instruction of AC adapter



- Do not scratch, break, twist, press or heat the power cord as this can cause the fire or leakage current.



- The AC adaptor is the optional accessory of the system. Use only the recommended power cord to prevent the risk of the melting, fire, electric shock, etc.



- In case of broken power cord, take the cord to an authorized service center to fix it. Use of improper power cord is very likely to cause fire and electric shock.



- Do not touch the AC adapter with wet hands to prevent any possible electric shock.

Safety instruction of power source and voltage



- Do not use any voltage beyond 100V. Avoid sharing the same outlet with many appliances to prevent the risk of fire and electric shock.

This manual is published by Weiyang Electric Wire & Cable Co., Ltd.  
All Rights Reserved.

THIS DEVICE COMPLIES WITH PART 15 OF THE FCC RULES. OPERATION IS SUBJECT TO THE FOLLOWING TWO CONDITIONS:

- (1) THIS DEVICE MAY NOT CAUSE HARMFUL INTERFERENCE AND
- (2) THIS DEVICE MUST ACCEPT ANY INTERFERENCE RECEIVED, INCLUDING INTERFERENCE THAT MAY CAUSE UNDESIRE OPERATION.

Caution:

The changes or modifications not expressly approved by the party responsible for compliance could void the user's authority to operate the equipment.



**WEIYANG ELECTRIC WIRE & CABLE CO., LTD.**

No.13, Da Tung St., Tu Cheng Industrial District, Taipei Hsien, Taiwan

TEL: (886-2)2269-3323, 2268-5265 FAX: (886-2)2269-3325

E-mail: wy@weiyang.com.tw

http://www.weiyang.com.tw