

KDXA-1001E

OPERATION MANUAL

INDEX

- **Install environment of KDXA-1001E**
- **Install NETWORK environment of
KDXA-1001E**
- **Installation of PPPoA**
- **Installation of PPPoE**
- **Installation of PPPoE (ROUTE MODE)**

Install environment of KDXA-1001E

NOTE! Default of KDXA-1001E is set up with PPPoE

Environment of KDXA-1001E PC

1. Requirement.

- 1) CPU : Over Pentium 133MHz
- 2) RMA : Over 32M
- 3) OS : Win95 / 98 / ME / 2000 / XP / Linux
- 4) 10 / 100 Lan Card
- 5) Lan Cable

2. Characteristic of KDXA-1001E

- 1) Support PPPoA / PPPoE
- 2) Common with Internet Line
- 3) No needed a additional connection program

Install initially of KDXA-1001E

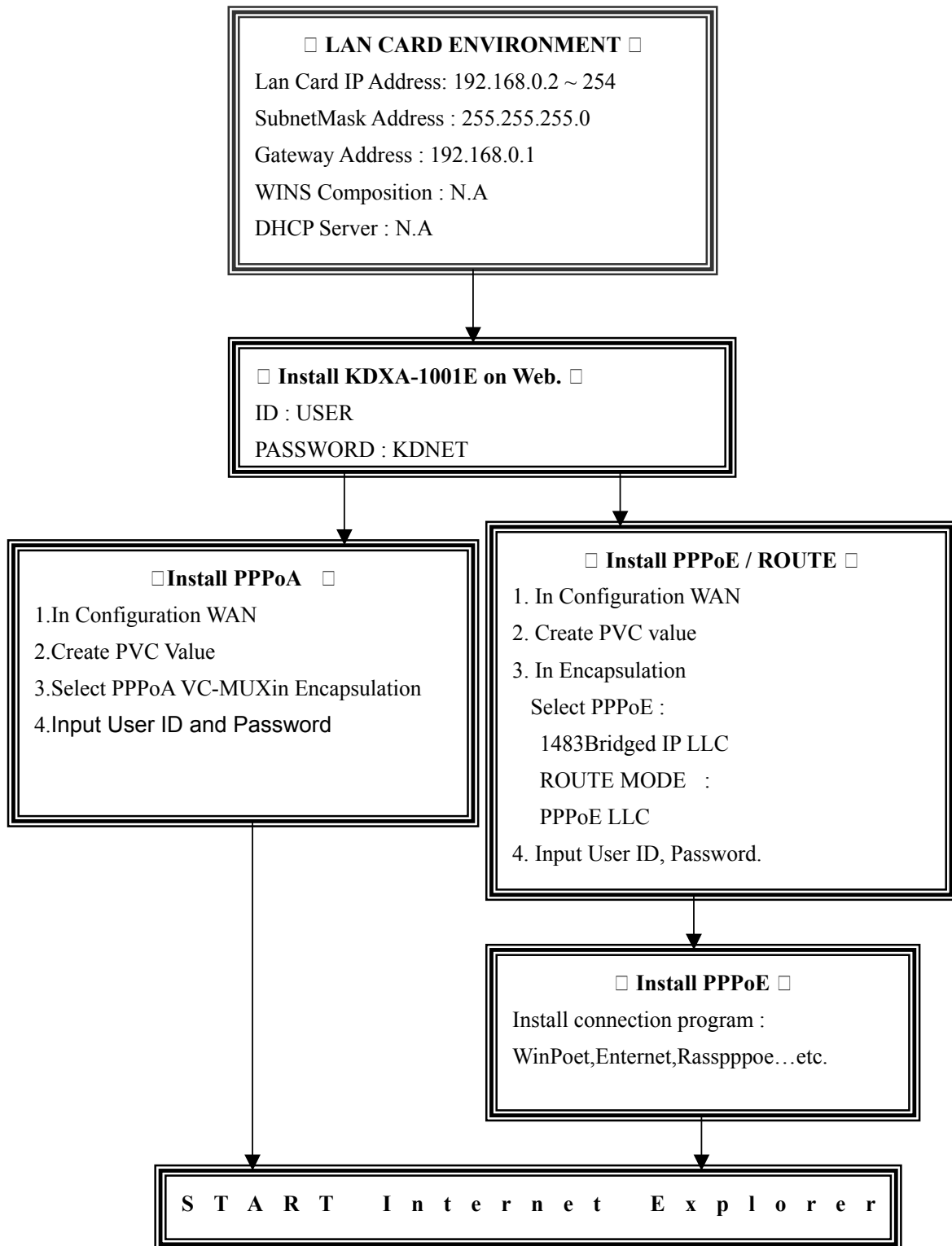
Network environment composition on PC

TCP/IP Protocol is required in Network composition on Windows environment

- * Lan Card IP address : 192.168.0.2 ~ 254
- * SubnetMask address : 255.255.255.0
- * Gateway address : 192.168.0.1

- Installation of KDXA-1001E is available on Web.

KDXA-1001E SETTING PROCESS



Install NETWORK environment of KDXA-1001E

□ Prior to the installation of network environment, LAN CARD must be installed in User's computer and this LAN CARD could be operated under the environment of the installation of TCP/IP protocol.

Unless the LAN CARD could be operated in normal, the LAN CARD and MODEM could not be operated in normal even though the network environment is in normal.

1. Locate MOUSE CURSOR on Network Icon then CLICK the right button of MOUSE as the below Fig.L-1

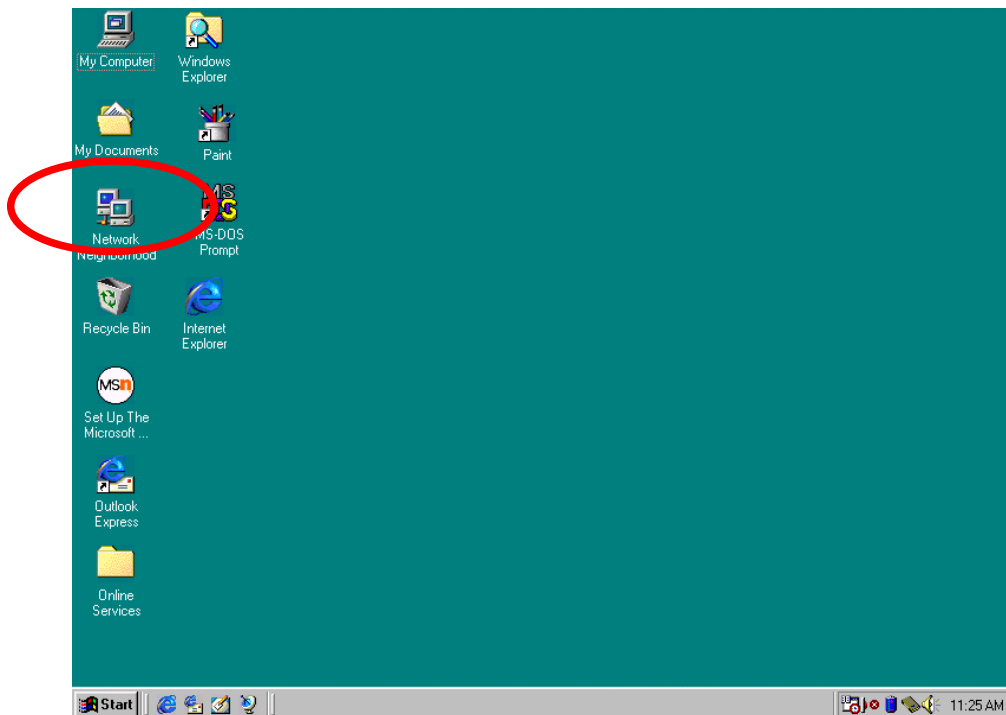


Fig. L-1

2. Select and Click PROPERTIES as Fig.L-2

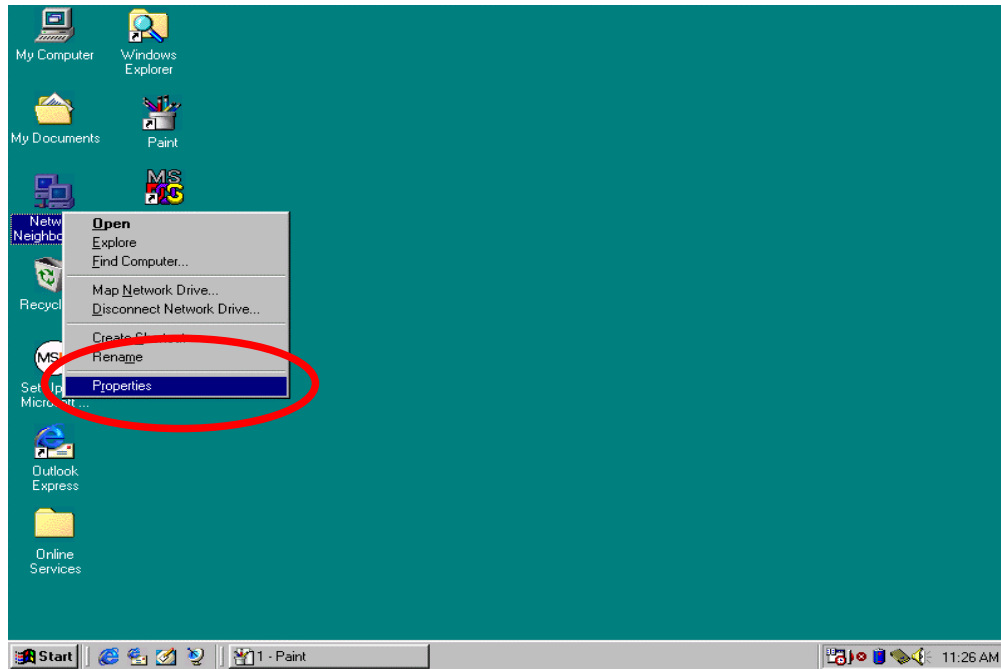


Fig. L-2

3. You can see a picture as the below(Fig.L-3)

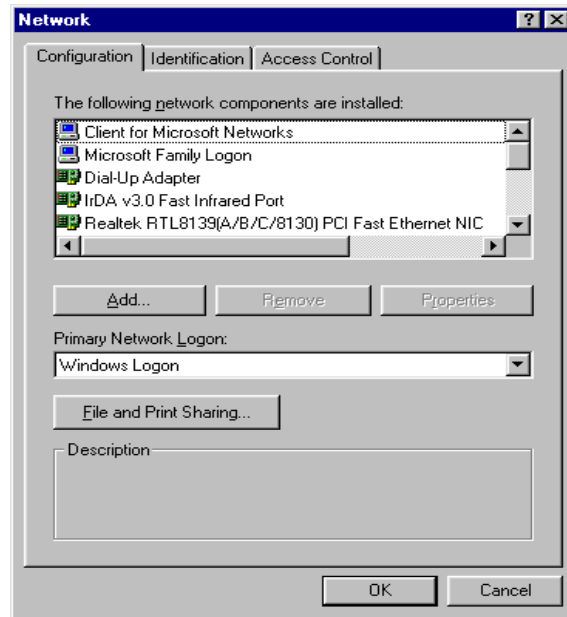


Fig. L-3

4. Select TCP/IP -> LAN CARD and Click Properties key as the below Fig.L-4

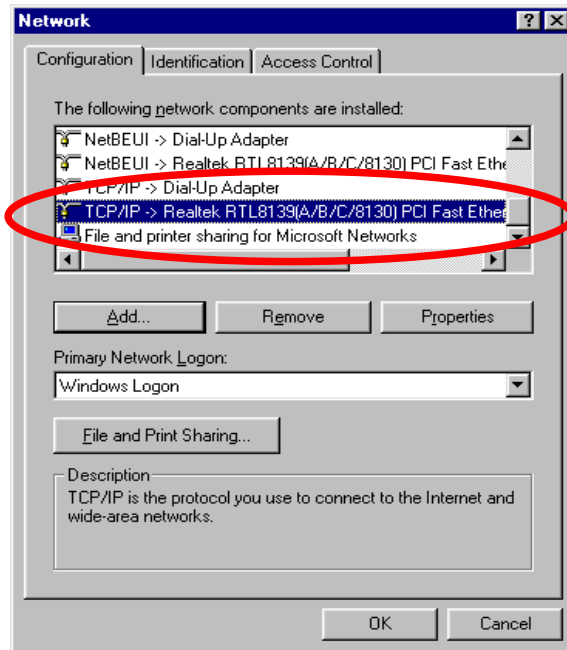


Fig L-4

5. Select “Specify an IP address”

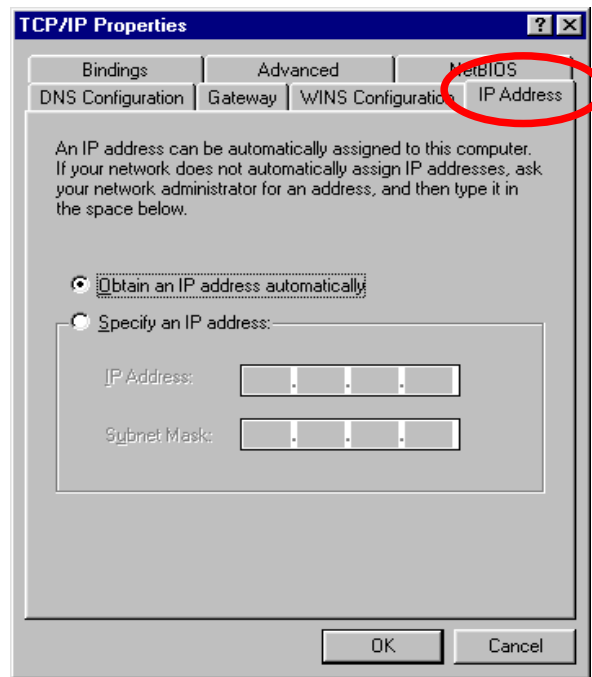
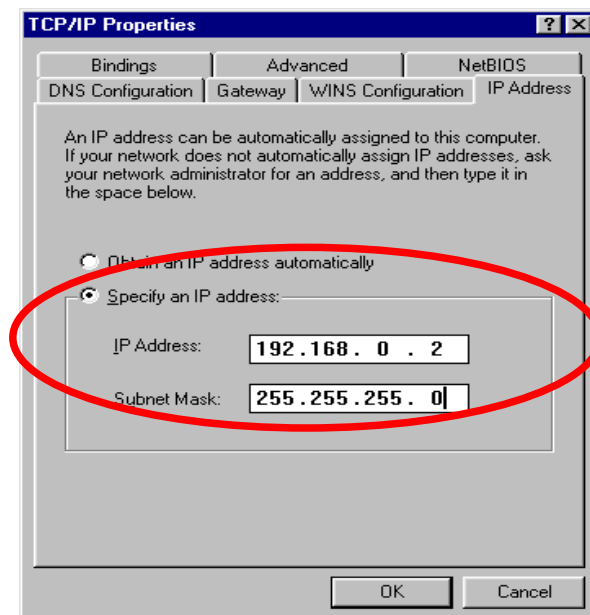


Fig L-5

6. Input IP address as 192.168.0.2 and Subnet mask as 255.255.255.0 as Fig.L-6.



□□ L-6

7. Select “Gateway” as the below Fig.L-7.

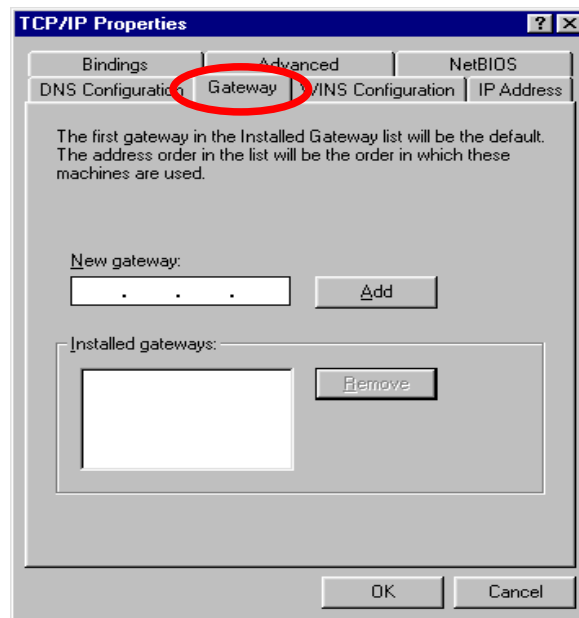


Fig. L-7

8. Input Gateway as 192.168.0.1 and Click “add”button as Fig.L-8 and L-9

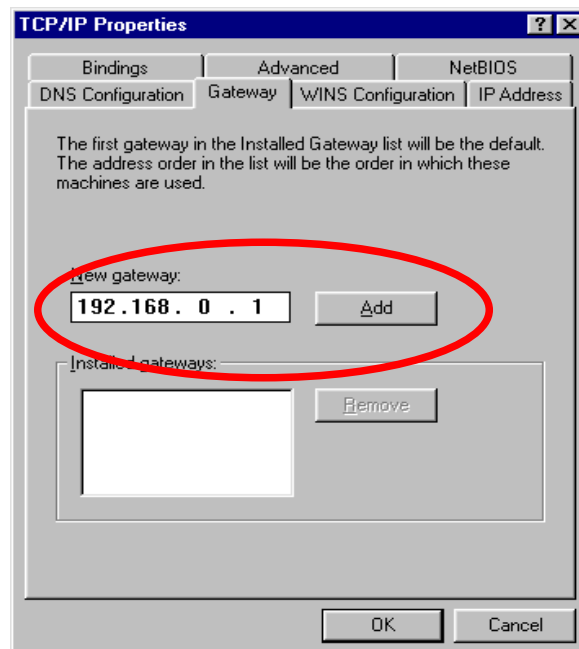


Fig. L-8

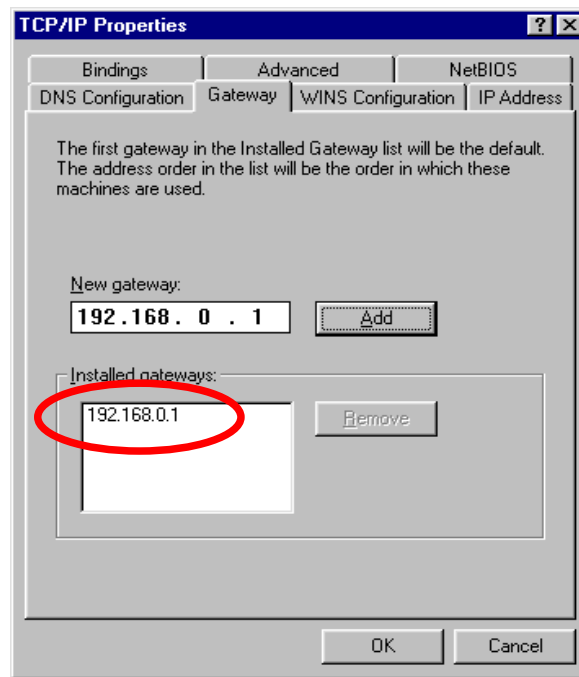


Fig. L-9

9. In "WINS configuration", Select "Disable WINS Resolution" and
Select "DNS Configuration" as Fig. L-10

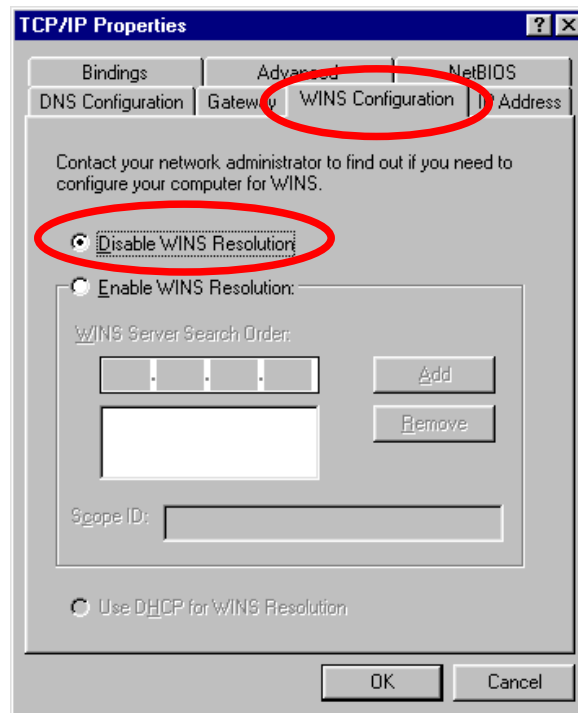


Fig. L-10

11. In DNS Configuration as Fig.L-11,
Select“Enable DNS”and input as following.
Host : Communication ID
Domain : ISP domain
DNS server search order : DNS address of ISP
DNS suffix search order : Domain address of ISP
And push “OK” button.

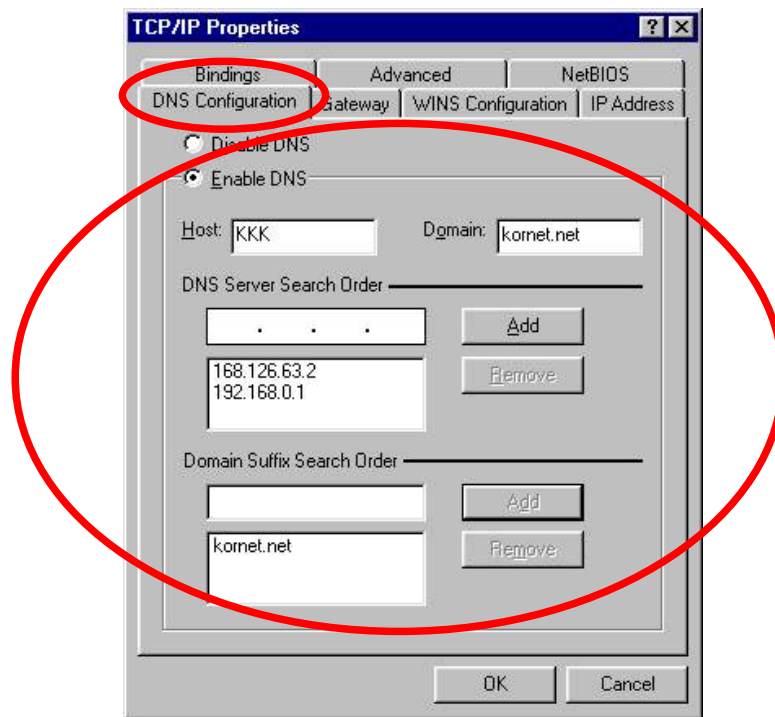


Fig. L-11

12. In a picture as Fig.L-12, Click “OK” button.

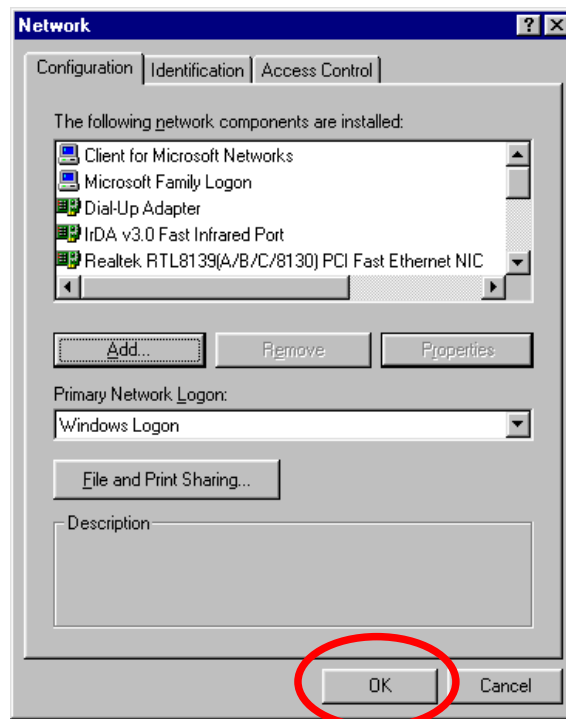


Fig. L-12

13. Then the next picture will be displayed as Fig.L-13 and Click “Yes” to restart the system.

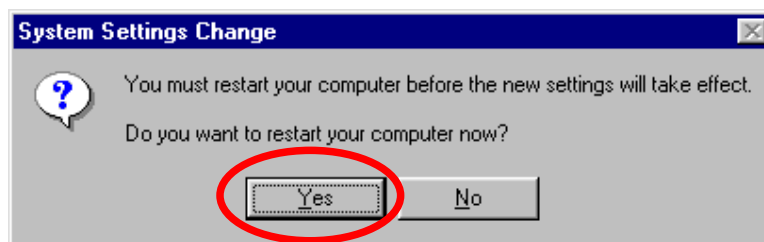


Fig. L-13

- Installation of network environment of KDXA-1001E is completed as the above process then you can install environment of KDXA-1001E MODEM on Web.
(Window CD is required if needed)

Installation KDXA-1001E on Web.

Note!: Install as the following if KDXA-1001E is connect with your computer in normal

Install PPPoA

- 1) Start Internet Explorer and input 192.168.0.1 to address and Enter.

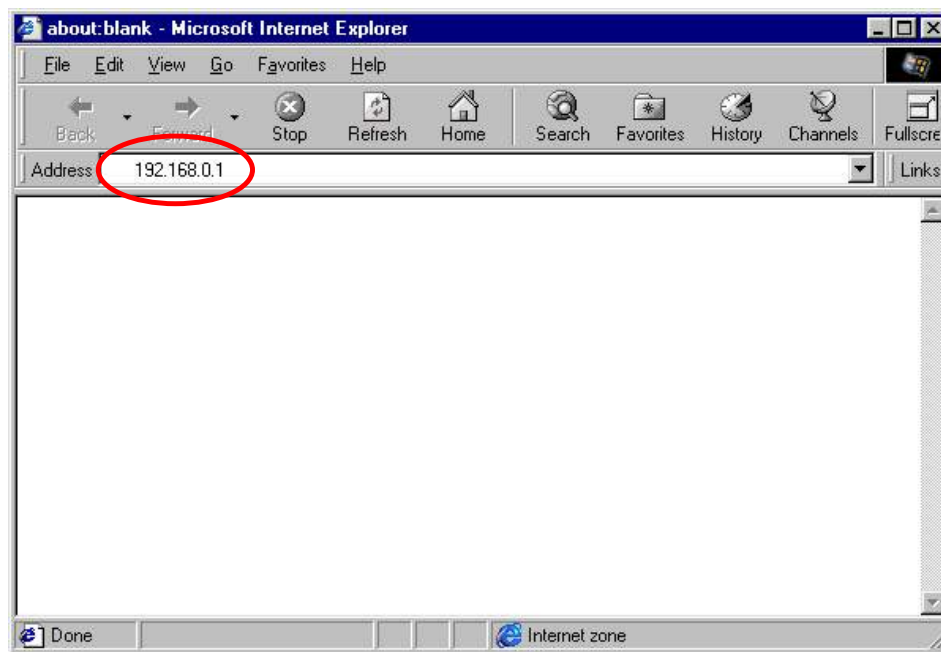


Fig. A-1

- 2) Enter User name as “user” and password as “kdnet” then click “OK”

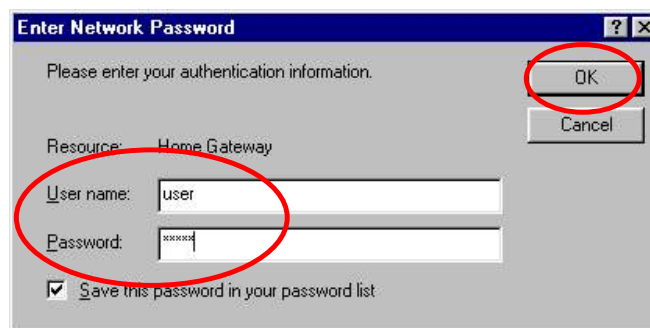


Fig. A-2

3) In the next picture as Fig.A-3, Select “WAN” on Configuration.

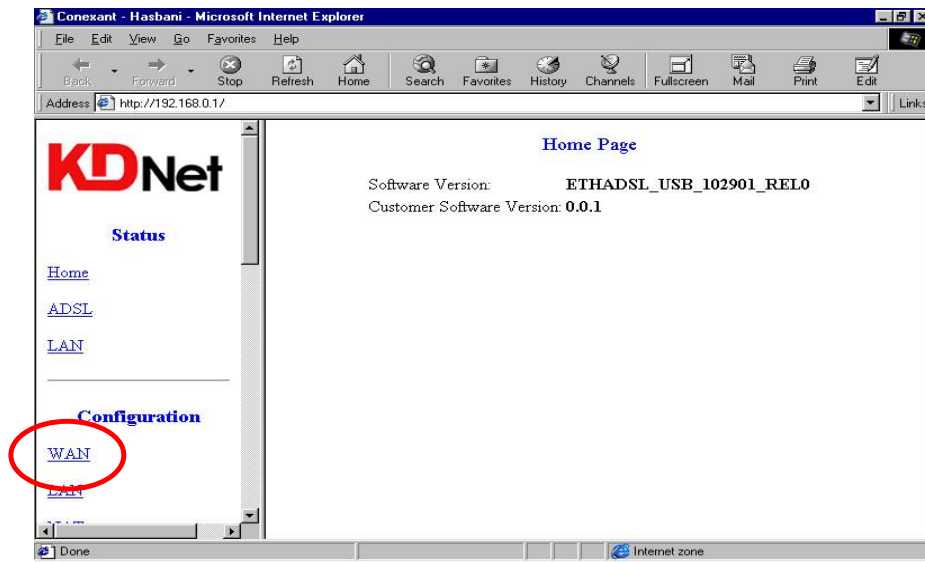


Fig. A-3

4) Input DSLAM value of ISP to VPI/VCI and select “PPPoA VC-MUX” on Encapsulation as the Fig.A-4 and 5.

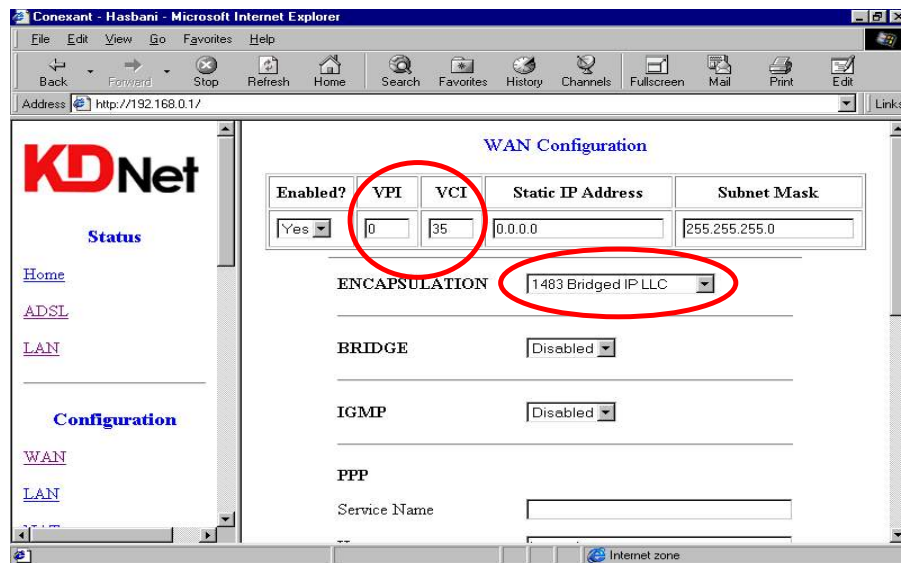


Fig. A-4

WAN Configuration

Enabled?	VPI	VCI	Static IP Address	Subnet Mask
<input type="button" value="Yes"/>	<input type="text" value="0"/>	<input type="text" value="35"/>	<input type="text" value="0.0.0.0"/>	<input type="text" value="255.255.255.0"/>

ENCAPSULATION

BRIDGE

IGMP

Fig. A-5

- 5) Input Username and Password which is granted from ISP company and input “32767” to “Disconnect Timeout” and then click “Automatic Reconnect” as Fig.A-6

Conexant - Hasbani - Microsoft Internet Explorer

Address <http://192.168.0.1/>

KDNet

Status

[Home](#)

[ADSL](#)

[LAN](#)

Configuration

[WAN](#)

[LAN](#)

PPP

Service Name

Username

Password

Disconnect Timeout seconds (Max:32767)

☒ Automatic Reconnect

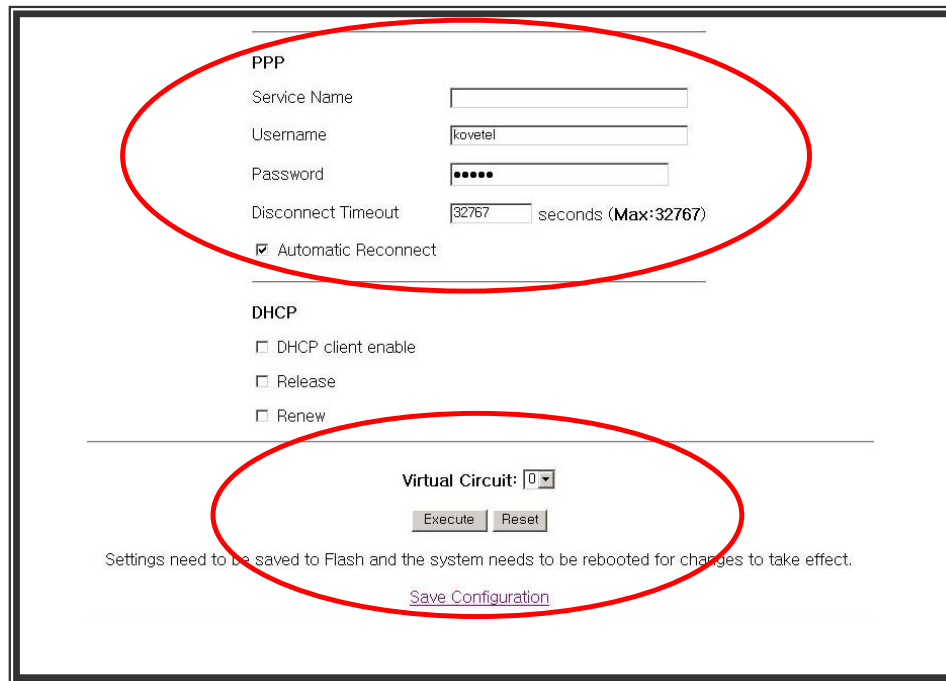
DHCP

☐ DHCP client enable

☐ Release

☐ Renew

Fig. A-6



PPP

Service Name:

Username:

Password:

Disconnect Timeout: seconds (Max:32767)

☒ Automatic Reconnect

DHCP

☐ DHCP client enable

☐ Release

☐ Renew

Virtual Circuit:

[Save Configuration](#)

Settings need to be saved to Flash and the system needs to be rebooted for changes to take effect.

Fig. A-7

- 6) After completion as Fig.A-7,select“Execute”and select “Save configuration”

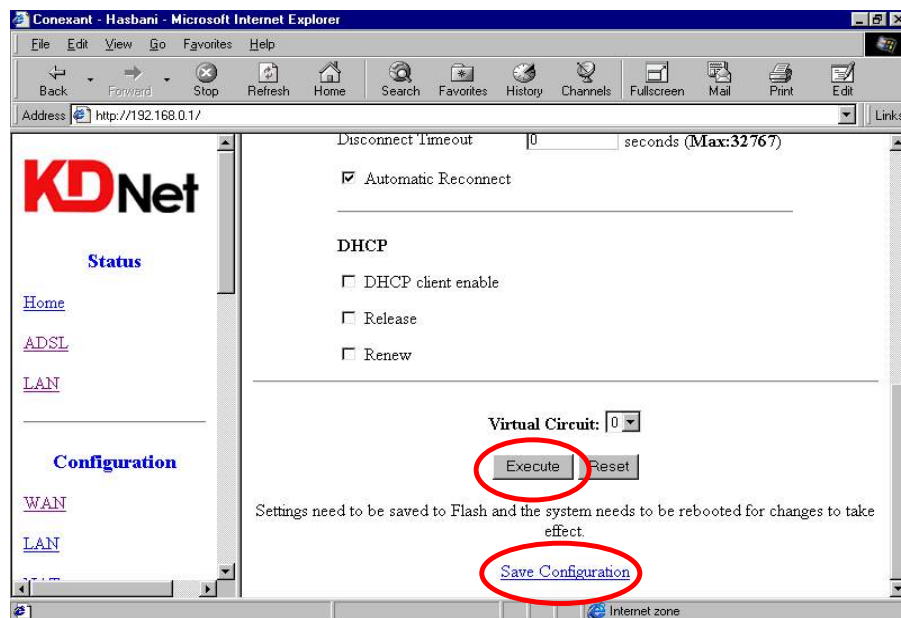


Fig. A-8

7) Push “Submit”key as Fig.A-9.

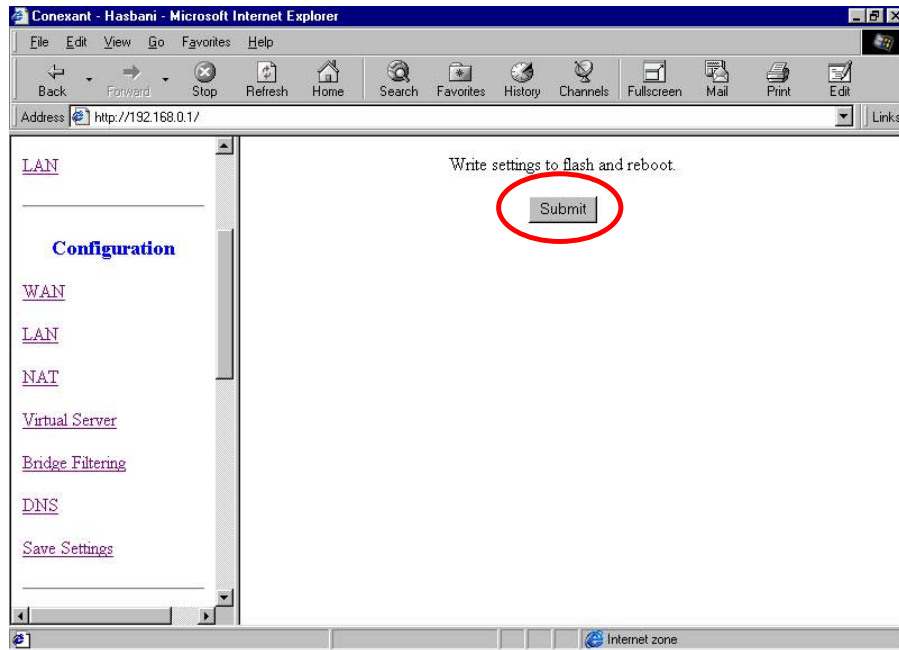


Fig. A-9

All installation is completed then ADSL Link will be disconnected and connected automatically after a while.

Note! During connection again,do not power off. If power off during the time, the data in Flash Rom might be disregarded.

- 7) After ADSL link LED of KDXA-1001E Modem select “ADSL” then the below Picture (Fig.A-10) will be displayed.

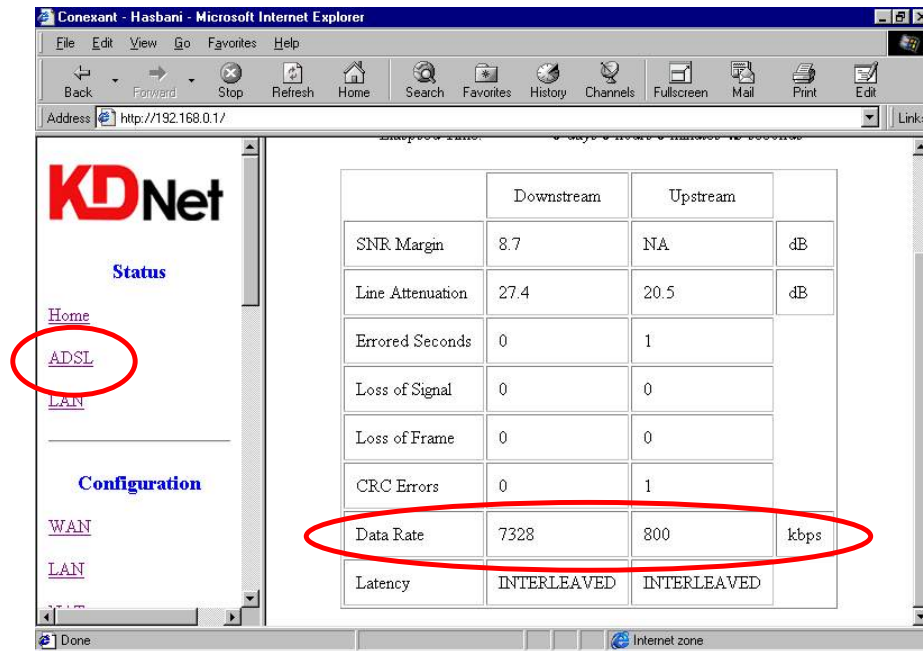


Fig. A-10

- 9) After confirm for the connection as Fig.A-10, Internet will be available with double click “Internet explorer”

Note! If Internet is not able to be operated normally, install once again as the above process.

Pls contact to service company if ADSL Link connection is disconnected.

Installation of KDXA-1001E on Web.

Note! Pls install as the below process if KDXA-1001E connect with computer normally.

Installation of PPPoE(Bridge Mode)

1) Start internet explorer as Fig.E - 1

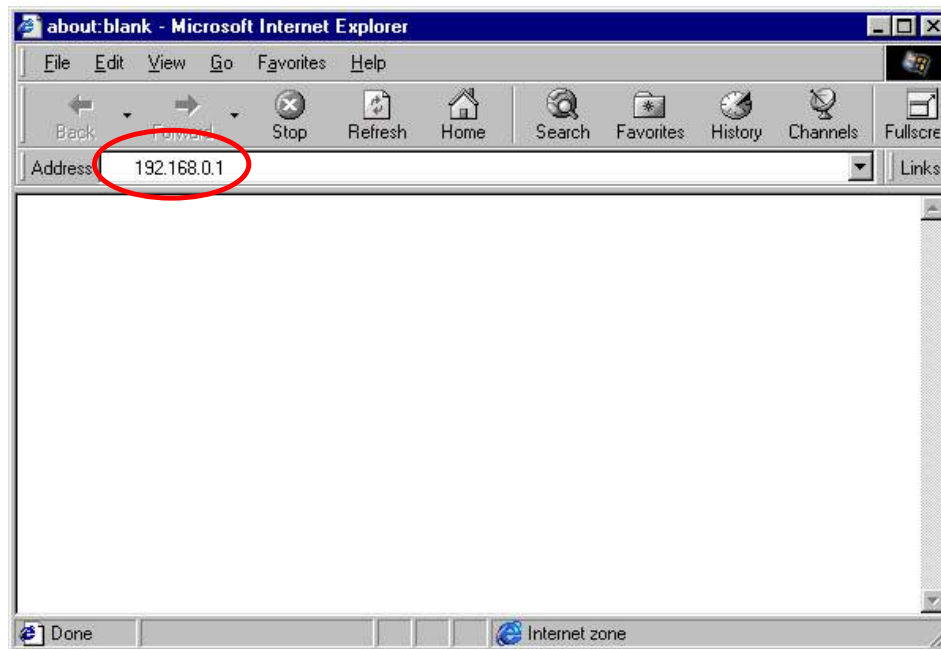


Fig. E - 1

2) Input 192.168.0.1 to address and push the “ENTER”key as Fig.E – 1.

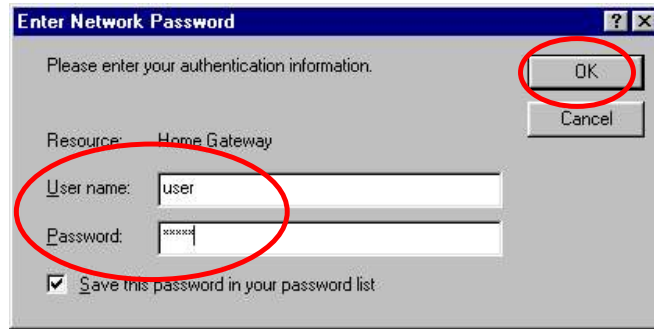


Fig. E - 2

3) Fill up the user name and password as the following.

User name: user.

Password : kdnet

4) On Fig. E –3, Select“WAN”

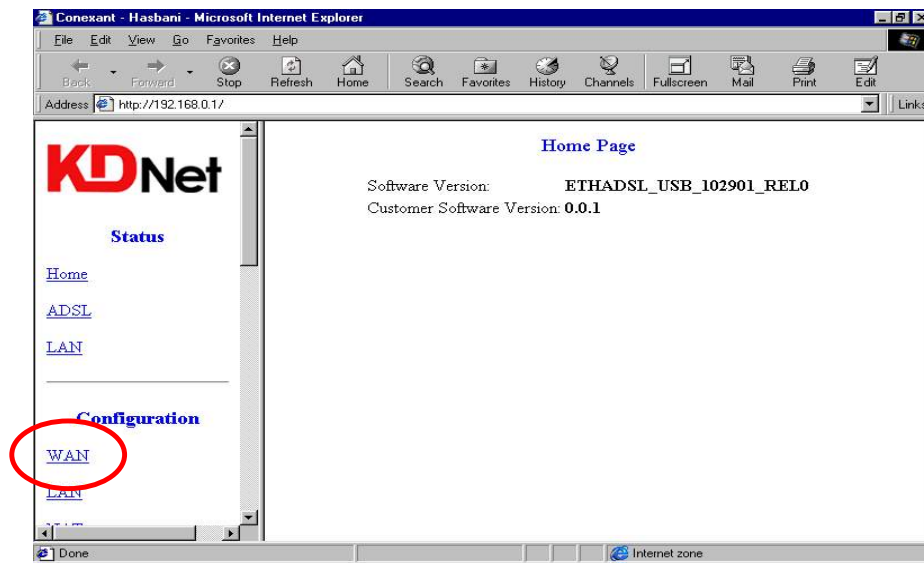


Fig. E - 3

**5) On Fig.E –4,input the DSLAM VALUE of ISP to VPI/VCID
and then select 1483 Bridged IP LLC in Encapsulation and select Enable in
BRIDGE as Fig.E – 4.**

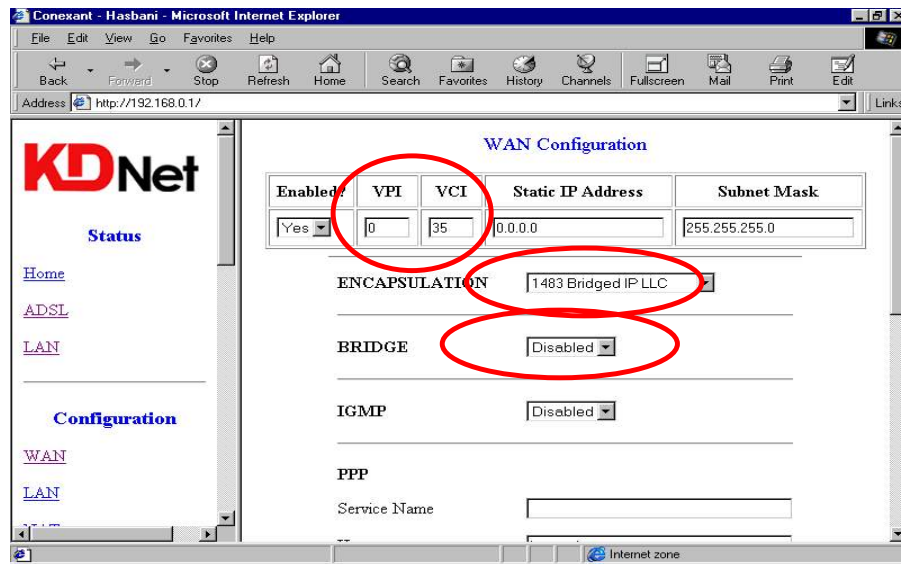


Fig. E - 4

- 6) Input “32767 to Disconnect Timeout and Click“Automatic Reconnect”
as Fig. E – 5.

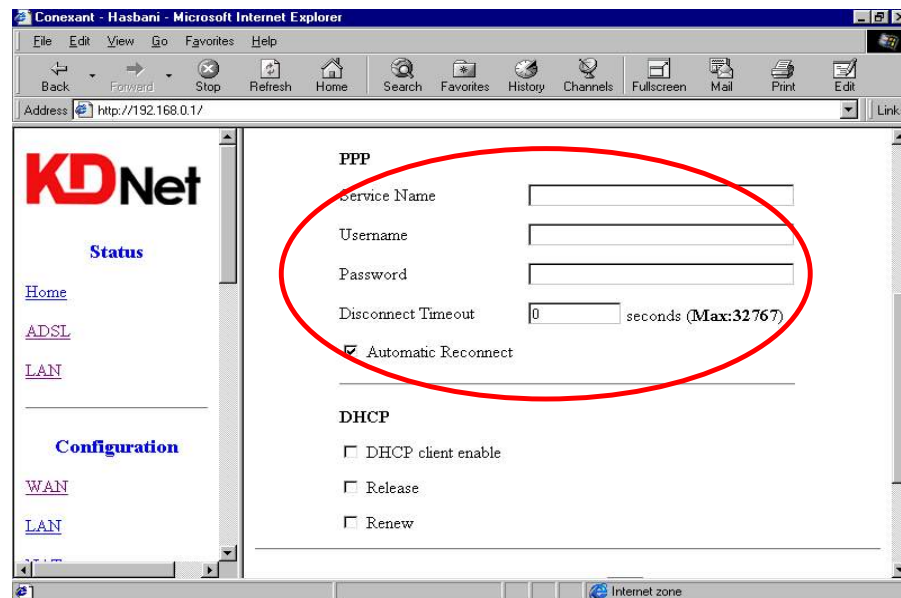


Fig. E – 5

- 7) On Fig.E – 6,
Select “Execute” and collect “Save Configuration”

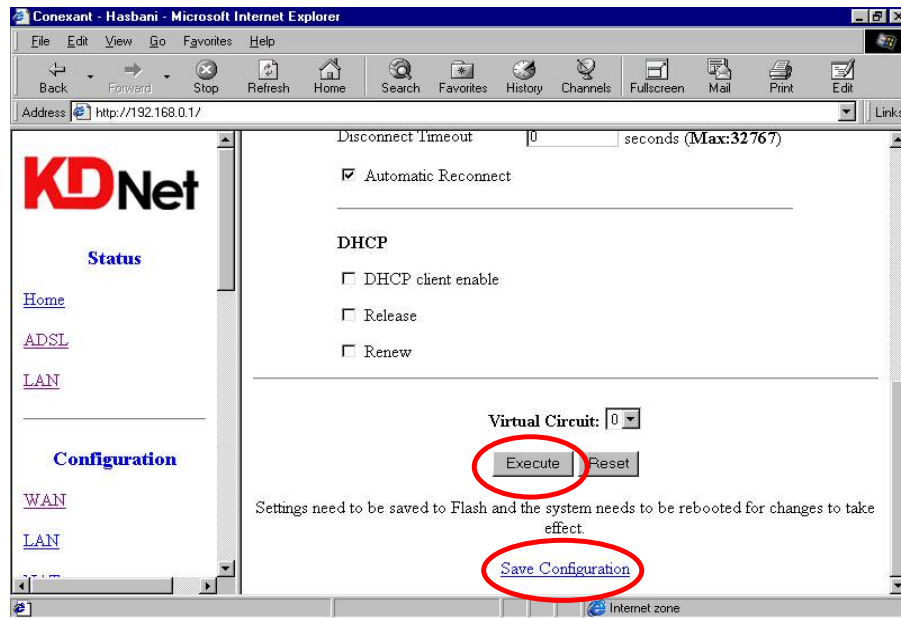


Fig. E - 6

- 8) On Fig.E – 7, Select “Submit”.

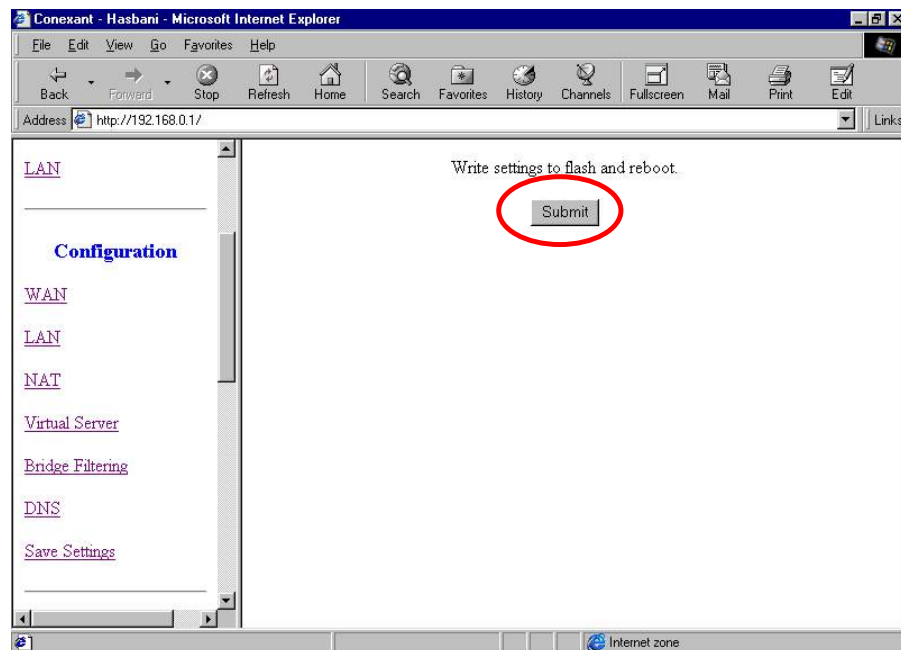


Fig. E - 7

After completion as above, ADSL Link will be disconnected and connect again automatically after a while.

NOTE! Do not power off during connecting again.

If power off during the time, the DATA in Flash Rom might be disregarded.

- 9) After ADSL Link LED of KDXA-1001E Modem is turn on, select “ADSL” then Fig.E –8 will be displayed.

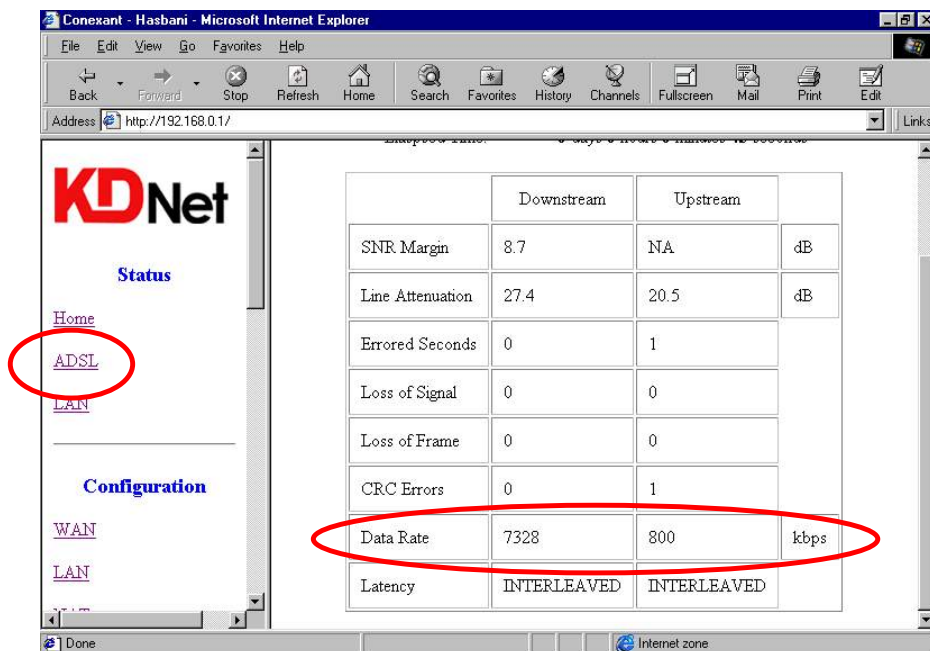


Fig. E - 8

- 10) In order to use Internet, you are required to install the Internet connection programs (WinPoet, Enternet, Rasppoe etc.)
- 11) After installation the Internet connection program, you can use Internet with double click of “Internet explorer)

NOTE! Pls install again if Internet is not operate normally.

If ADSL Link connection is disconnected, Pls contact to service company.

Installation of PPPoE(Route Mode)

1) Start Internet explorer as Fig. R-1.

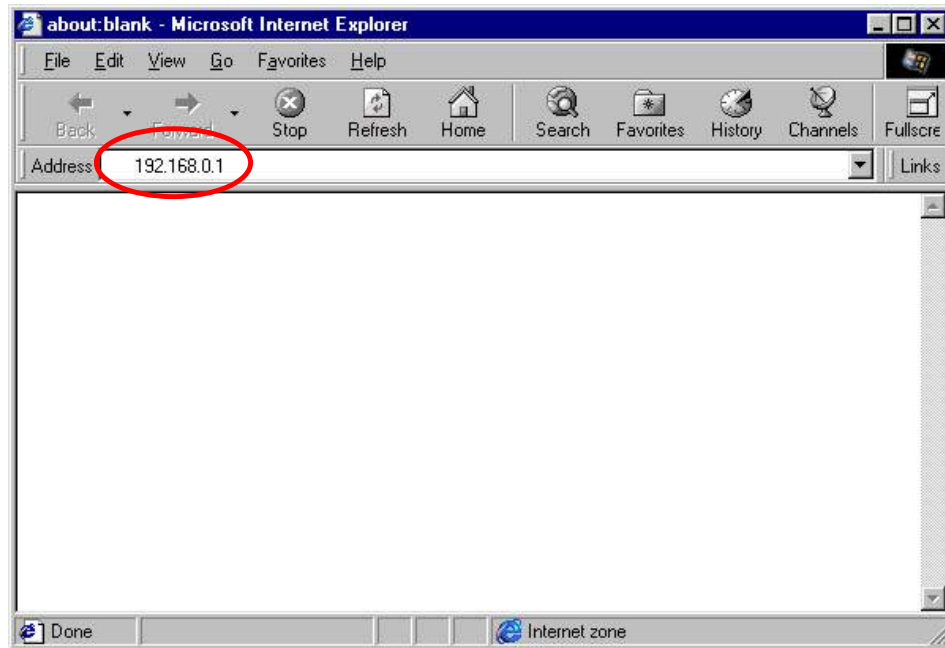


Fig. R - 1

2) Input 192.168.0.1 to address and enter.

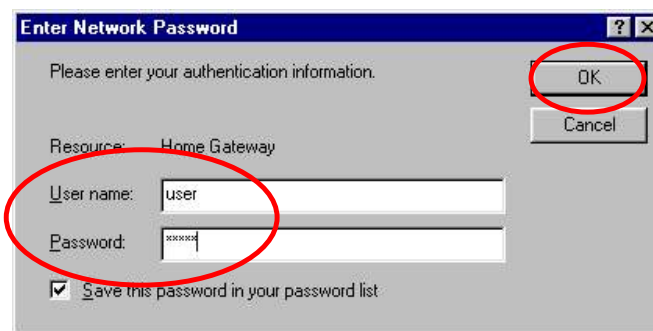


Fig. R - 2

3) On Fig.R –2,input user name and password as the following and click “Enter”

User name: user.

Password:kdnet.

4) Select“WAN”on Fig.R - 3

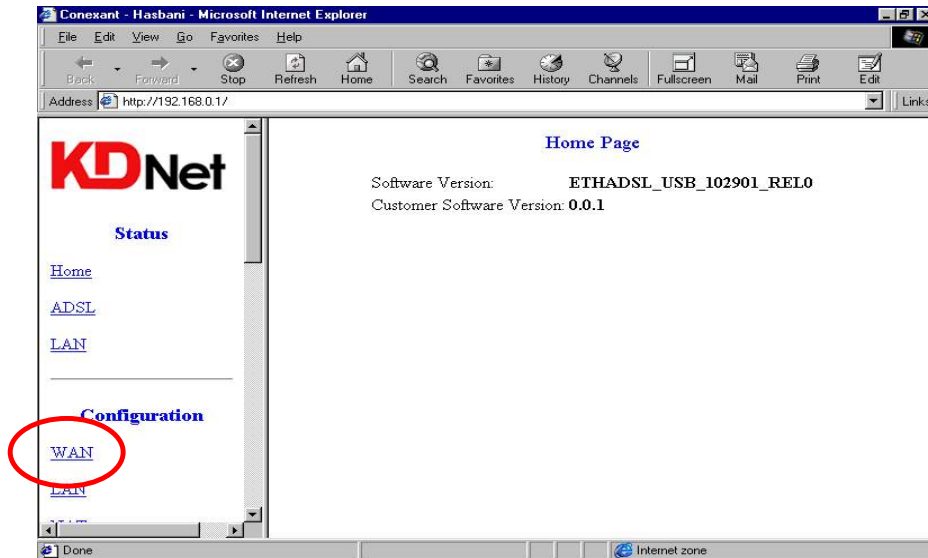


Fig. R - 3

5) Input the DSLAM value to VPI/VCI and select PPPoE LLC in Encapsulation as Fig.R – 4, 5

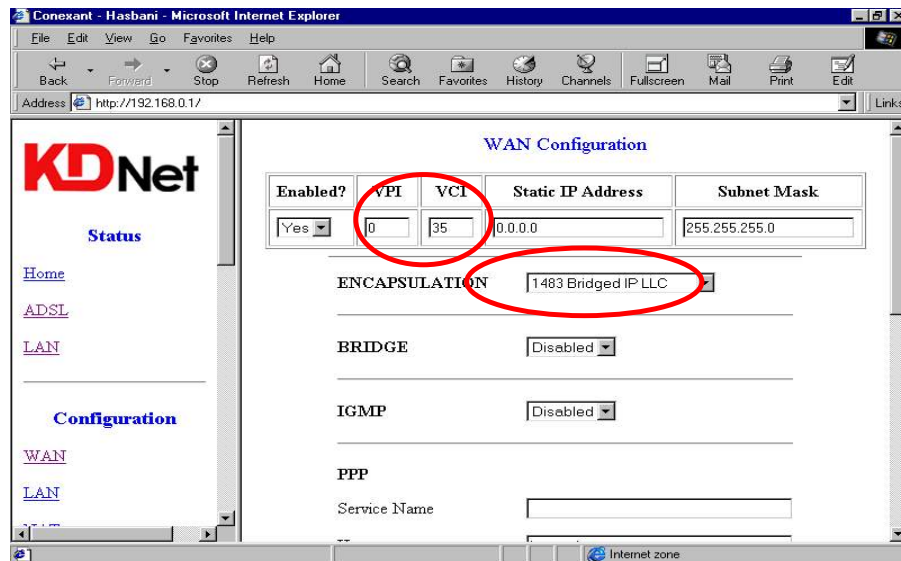


Fig. R - 4

WAN Configuration

Enabled?	VPI	VCI	Static IP Address	Subnet Mask
Yes <input type="button" value="v"/>	0	35	0.0.0.0	255.255.255.0

ENCAPSULATION PPPoE LLC

BRIDGE Disabled

IGMP Disabled

Fig. R - 5

- 6) Input the User name and Password which is granted from ISP company and Input 32767 to Disconnect timeout then click "Automatic Reconnect" as Fig.R - 7

Conexant - Hasbani - Microsoft Internet Explorer

Address <http://192.168.0.1/>

KDNet

Status

[Home](#)

[ADSL](#)

[LAN](#)

Configuration

[WAN](#)

[LAN](#)

PPP

Service Name

Username

Password

Disconnect Timeout seconds (Max:32767)

☒ Automatic Reconnect

DHCP

☐ DHCP client enable

☐ Release

☐ Renew

Internet zone

Fig. R - 6

PPP

Service Name

Username

Password

Disconnect Timeout seconds (Max:32767)

☒ Automatic Reconnect

Fig. R - 7

7) After completion as Fig. R – 7, Select “Execute” then select “Save Configuration” as Fig. R - 8

Conexant - Hasbani - Microsoft Internet Explorer

File Edit View Go Favorites Help

Back Forward Stop Refresh Home Search Favorites History Channels Fullscreen Mail Print Edit

Address <http://192.168.0.1/> Links

KDNet

Status

[Home](#)

[ADSL](#)

[LAN](#)

Configuration

[WAN](#)

[LAN](#)

Disconnect Timeout seconds (Max:32767)

☒ Automatic Reconnect

DHCP

☐ DHCP client enable

☐ Release

☐ Renew

Virtual Circuit:

Settings need to be saved to Flash and the system needs to be rebooted for changes to take effect.

[Save Configuration](#)

Internet zone

Fig. R - 8

8) On Fig. R –9, Select and click “submit’.

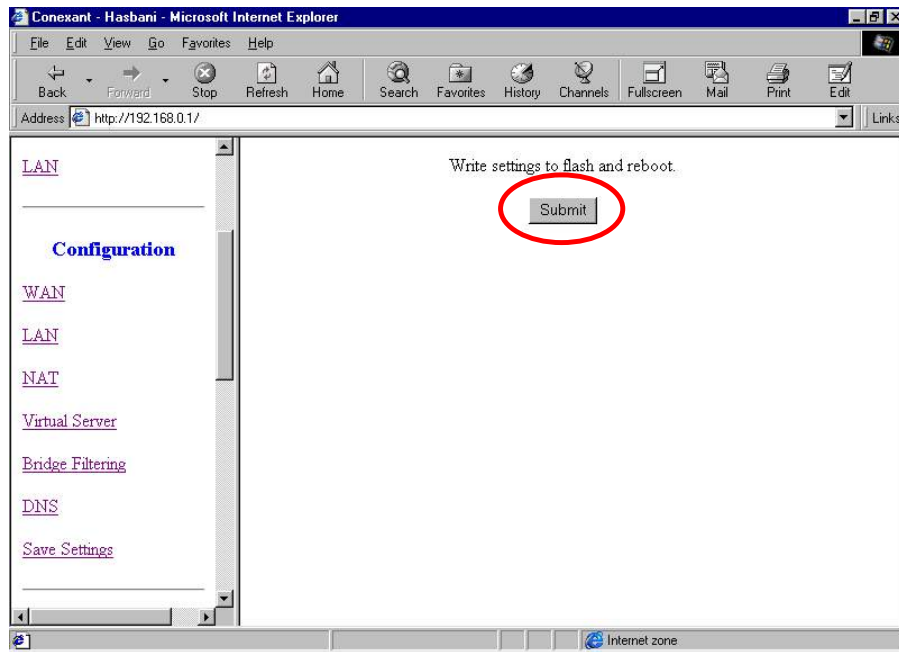


Fig. R – 9

After completion as above, ADSL Link will be disconnected and connect again Automatically after a while.

NOTE! Do not power off during reconnecting.

If power off during the time, the DATA in Flash Rom will be disregarded

9) After ADSL Link LED of KDXA-1001E modem is turn on, select “ADSL” then the below picture will be displayed.

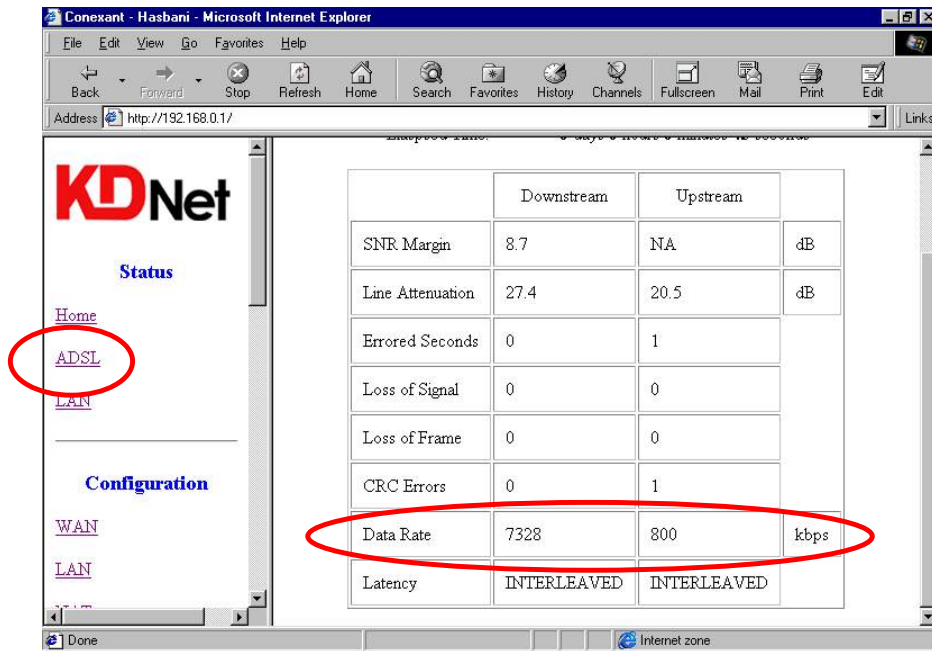


Fig. R - 10

10) Upon confirmation for the connection as above, you can use Internet with double click “Internet explorer”

NOTE! If Internet is not operated normally, pls install again.

Pls contact to service center if ADSL Link connection is disconnected.

FCC NOTICE

NOTE: This equipment has been tested and found to comply with the limits for a Class B digital device, pursuant to Part 15 of the FCC Rules. These limits are designed to provide reasonable protection against harmful interference in a residential installation. This equipment generates, uses and can radiate radio frequency energy and, if not installed and used in accordance with the instructions, may cause harmful interference to radio communications. However, there is no guarantee that interference will not occur in a particular installation. If this equipment does cause harmful interference to radio or television reception, which can be determined by turning the equipment off and on, the user is encouraged to try to correct the interference by one or more of the following measures:

- Reorient or relocate the receiving antenna.
- Increase the separation between the equipment and receiver.
- Connect the equipment into an outlet on a circuit different from that to which the receiver is connected.
- Consult the dealer or an experienced radio/TV technician for help.

NOTE: The manufacturer is not responsible for any radio or TV interference caused by unauthorized modifications to this equipment. Such modifications could void the user's authority to operate the equipment.