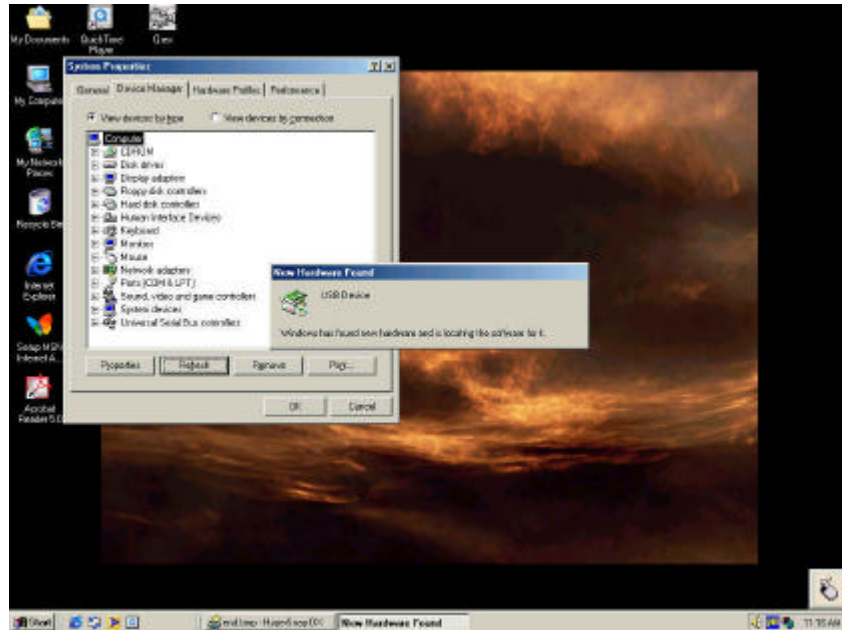
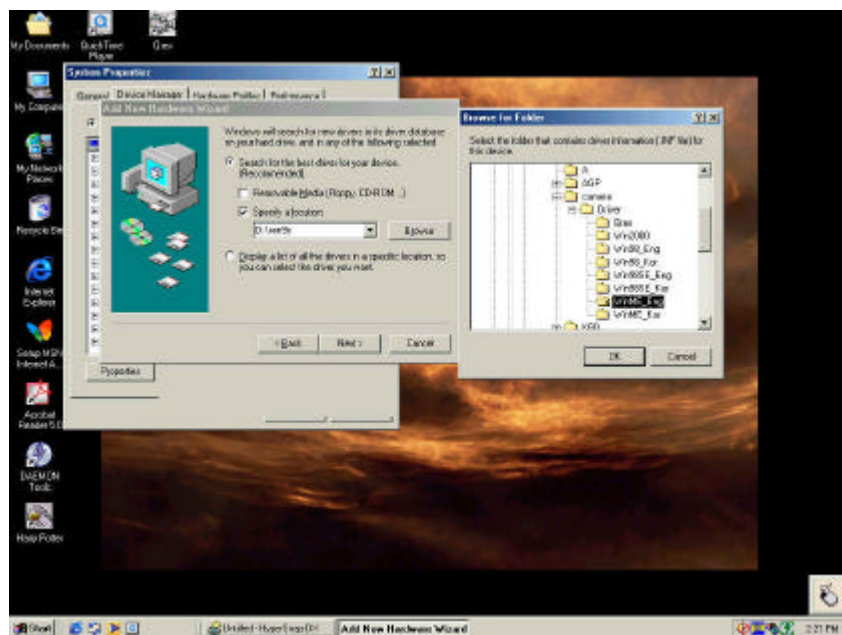


Installing camera driver

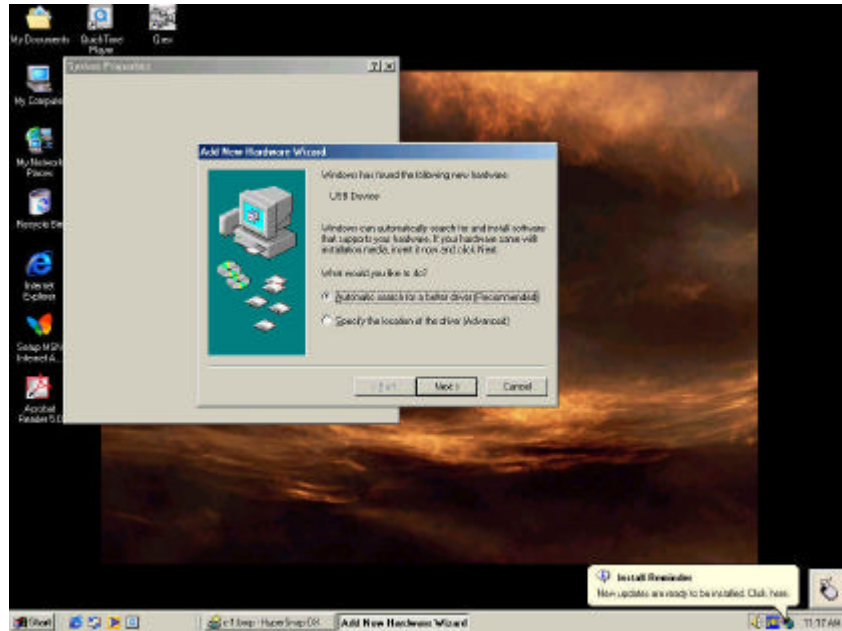
1. 'START'>'SETTINGS'>'CONTROL PANEL'>'SYSTEM'>'DEVICE MANAGER'>
click 'REFRESH'



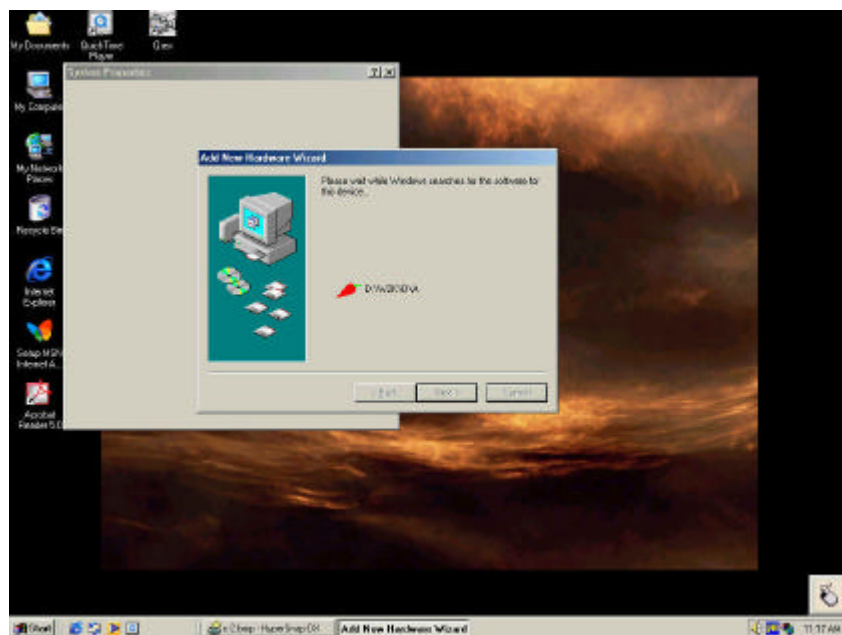
2. After confirmation the add device, select driver of CD-ROM
(Caution : Take a driver for each corresponding OS)



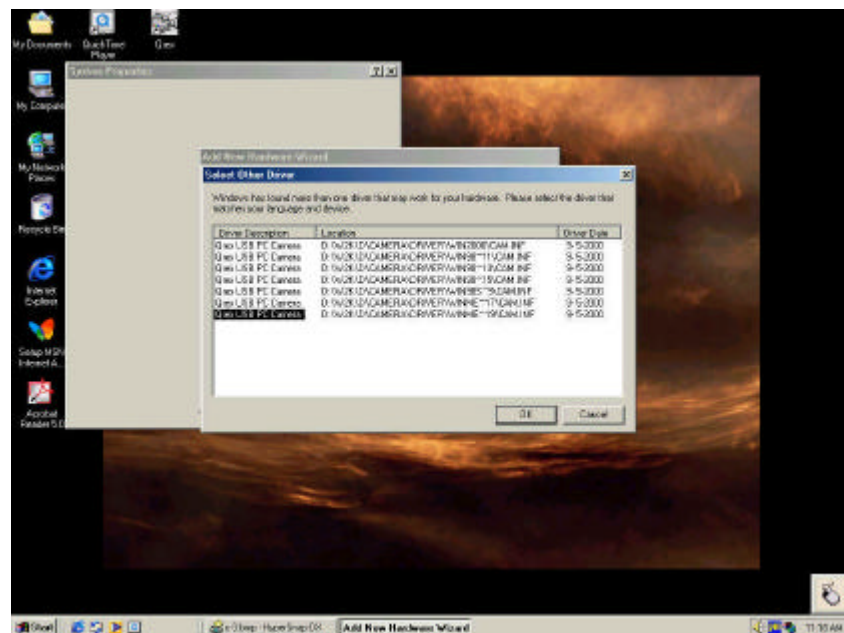
3. Click 'NEXT' on add new hardware wizard screen



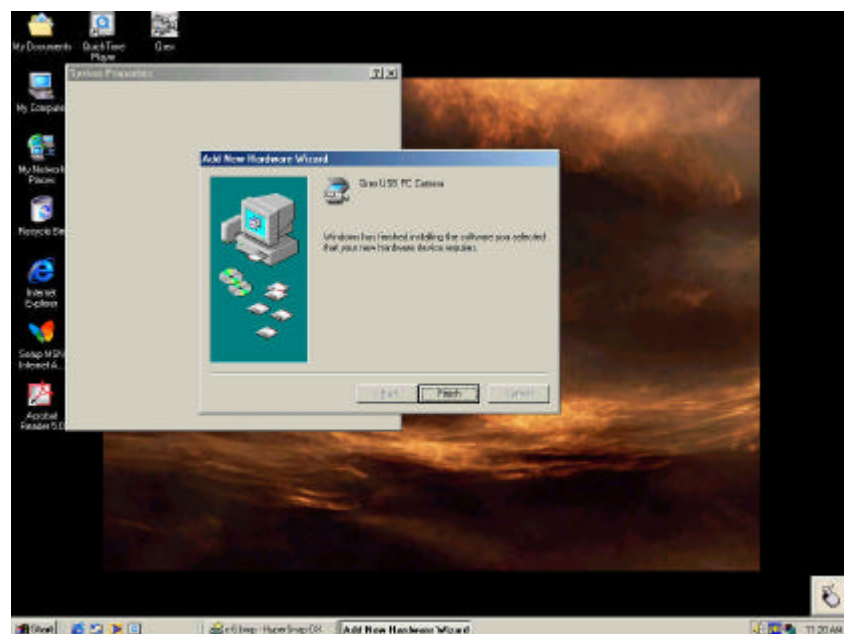
4. Click 'NEXT' on add new hardware wizard screen



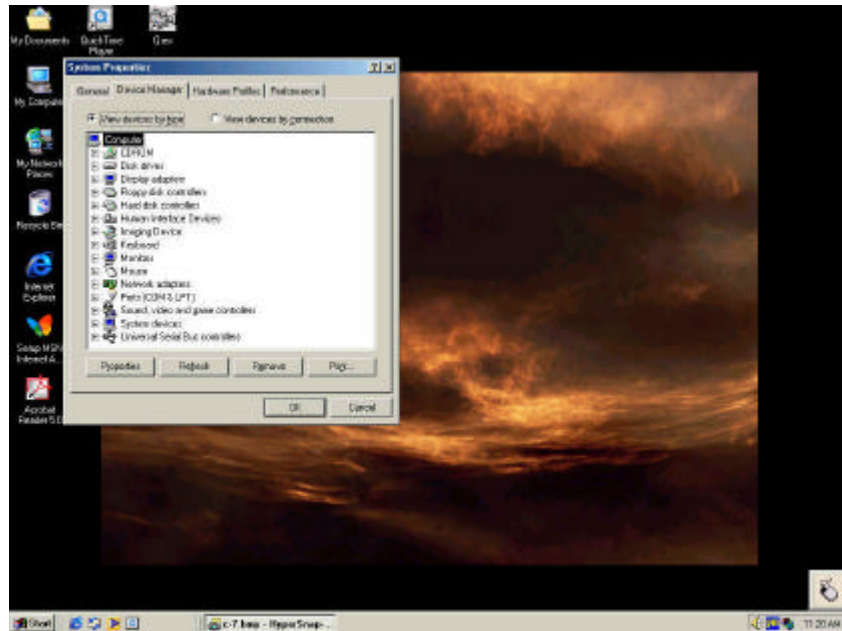
5. Screen of install



6. Click 'CLOSE'



7. Image device is installed on 'DEVICE MANAGER'



8. Camera OS install selection



9. Installing OS driver



10. screen of install



11. When installing is done, click 'FINISH'



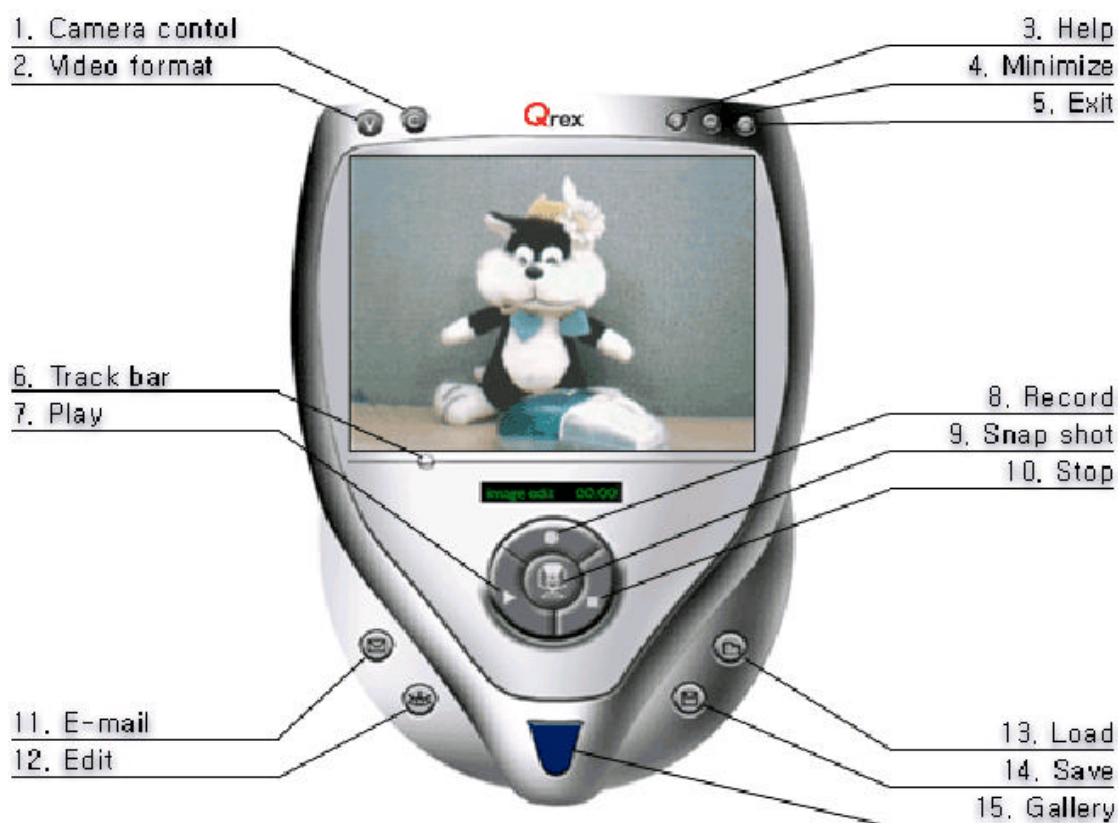
12. Double click 'Qrex' icon on desk top. The Qrex camera window will appear.



Using Camera

1. Function button

You can display image that inputting camera or can take photograph still image and moving image. Also, you can send stillness image and moving image by e-mail with one-click. This convenient program supports moving Image compression function



2. Function button explanation

Camera control	Control color / brightness of camera
Video format	Change Image size / format of camera
Help	Help for how to use program and special feature of camera
Minimize	Minimize size of program
Exit	Close program
Track bar	Time setting the moving image that will record. (Max-60sec)
Play	Running the saved moving image
Record	Recording moving image
Snap shot	Changing moving image to still image
Stop	Stop running moving image
E-mail	Sending moving image and still image
Edit	Editing with image editor
Load	Loading saved moving image and still image from disk
Save	Saving moving image and still image to disk
Gallery open	Viewing the recorded still image / moving image

3. Explanation for main function

Appending image to e-mail

Stillness image supports JPEG, moving image is compressed by MPEG-4 (AVI)

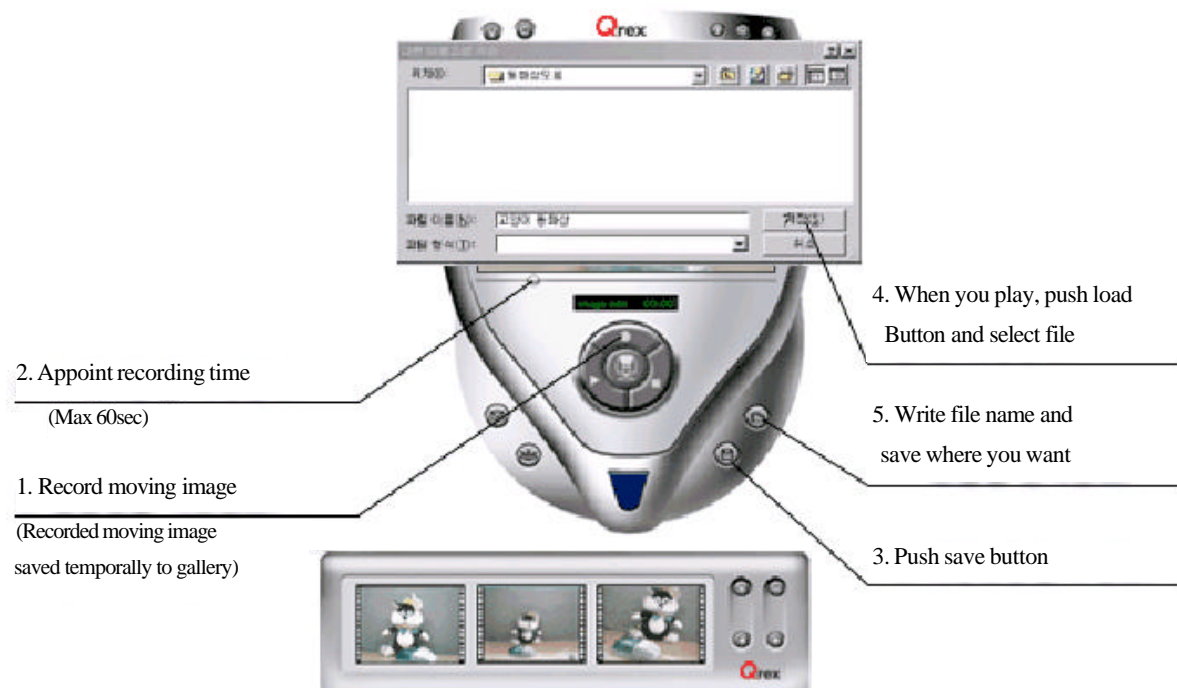
MPEG-4 is not compression codec of window, so it may not be installed in computer. If it is not played, download window media player from Microsoft web site and install.

3. Write message recipients, title, contents, then send e-mail



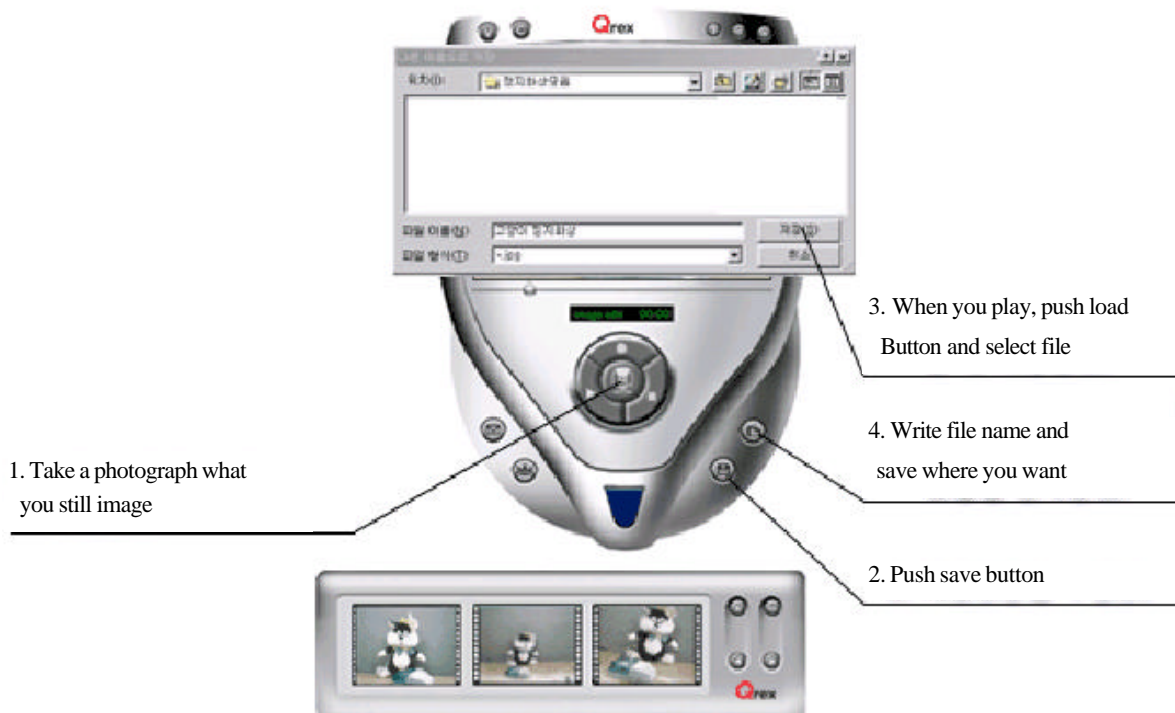
Reference : In case of window98 English version, e-mail attach
function may not play

4. Moving image saving / playing function



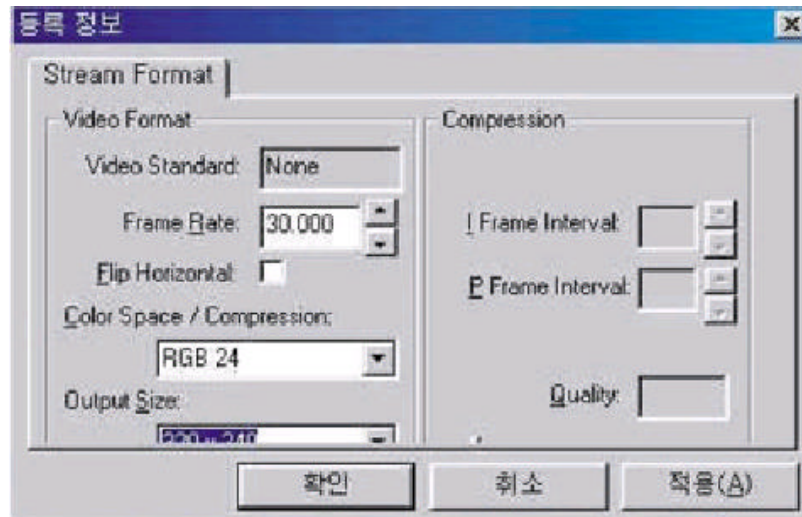
Reference : Moving image is saved by AVI format-

5. Snap shot function (Save / Load function)



Reference : Stillness image can be saved by
BMP / JPG

6. Video format setting



Changing for pixel size / format of viewer

Frame rate

Control frame / sec which is recognized by camera,

640 x 480 (Max15fps) 320 x 230 (Max30fps) With more frame per sec interruption will be low and high quality image will appear. However high function system is required.

But it needs high system

Flip horizontal

Flip over image (switching left to right)

Color S/C

Control screen quality of viewer display

RGB24 is best screen, but speed becomes slow.

Output size

Control pixel size of viewer. Display size is not changed. If you take a photograph with snap shot button, size is pertinent size

7. Camera format setting



Adjust brightness, contrast, color tone, chroma and resolution

Automatic adjustment

Adjust brightness and exposure automatically by mark 'AUTO'

Color selection

Converts the display to color or black and white

Flicker

Removes the flickering of the display

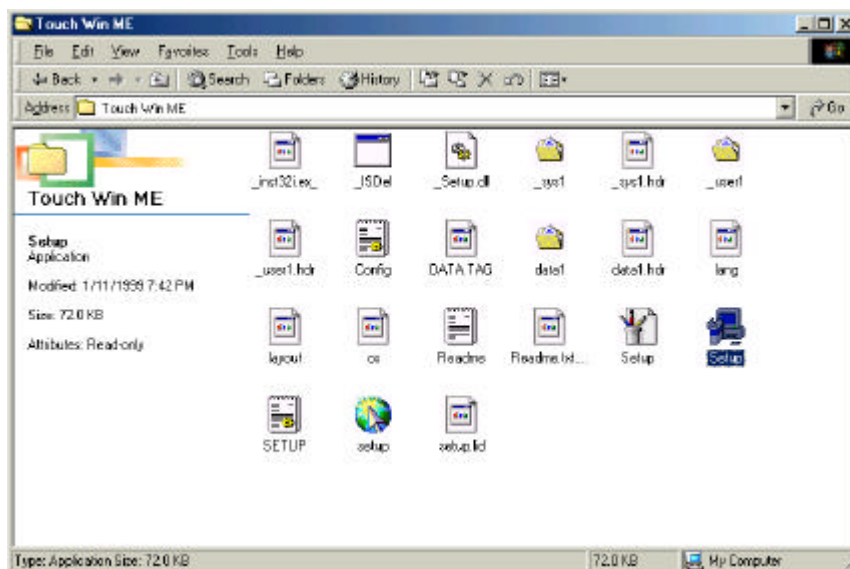
Defaults

Load default settings

Installing touch driver

1. Installing touch driver

(1) Program installing

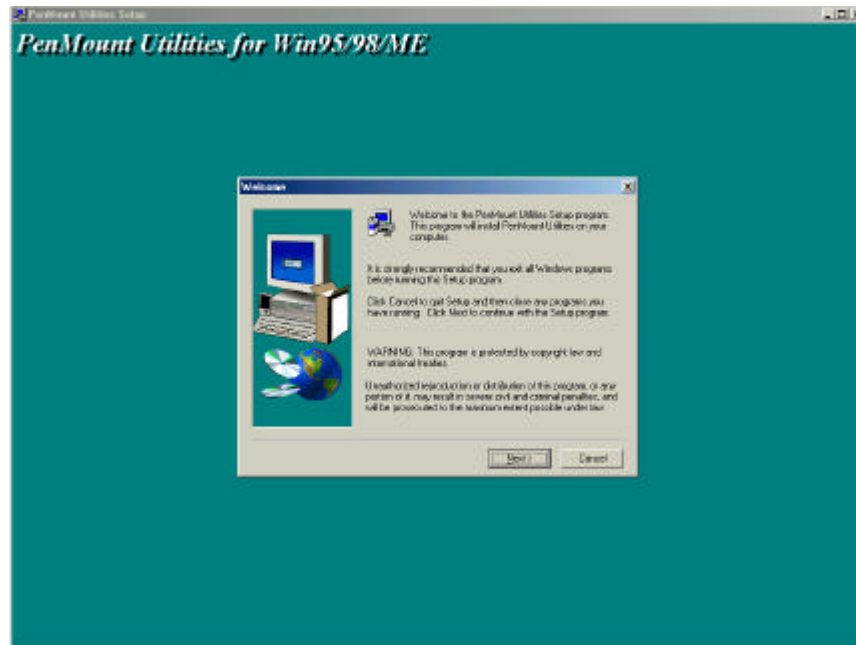


(2) Screen of setup

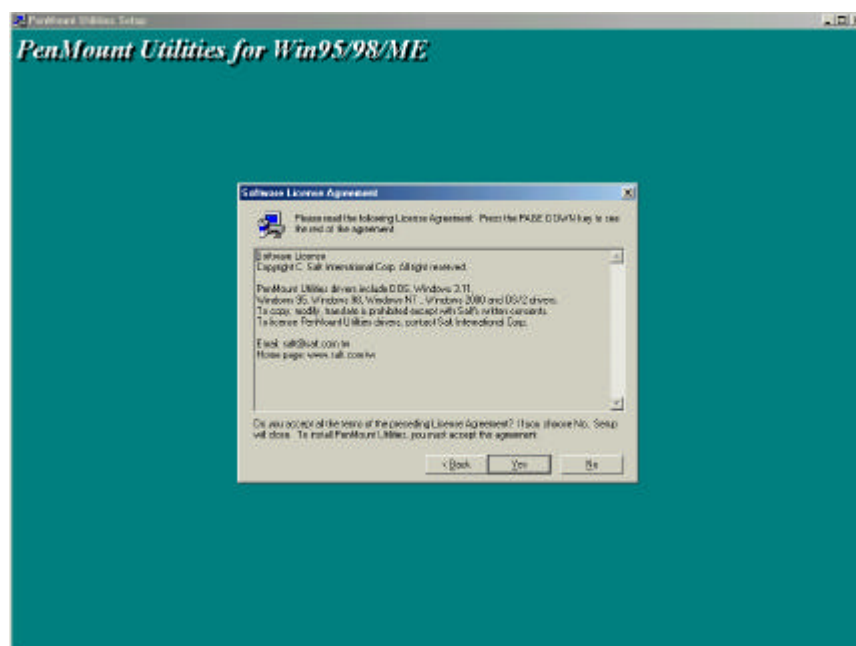


(3) Screen of running install

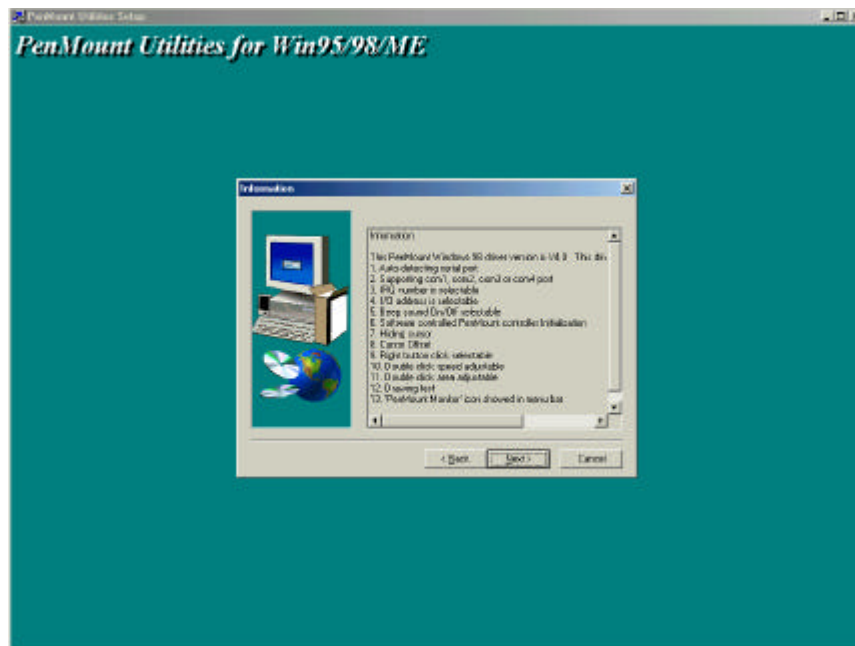
Beginning screen appears when you run setup. Then click 'NEXT'



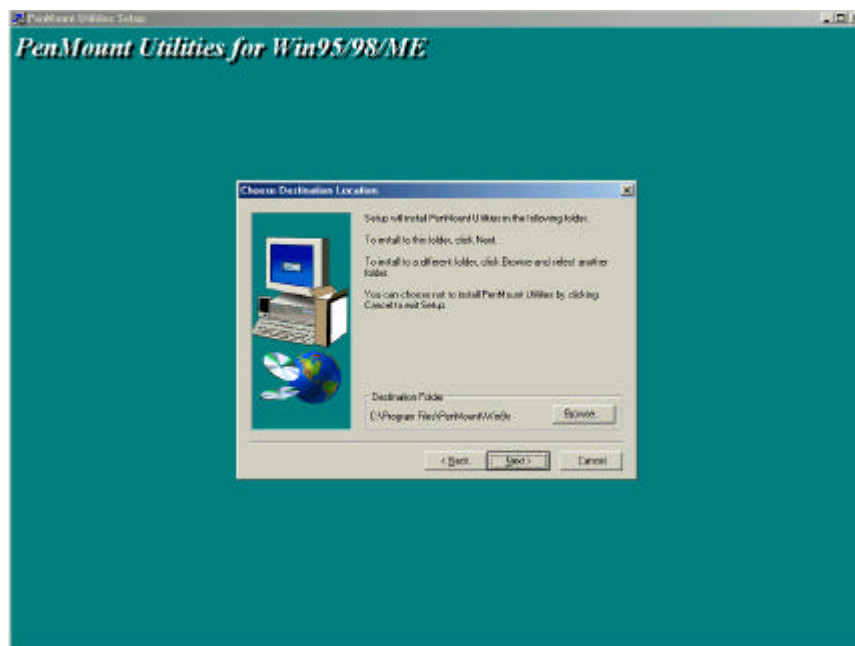
(4) Click 'YES' in software license agreement



(5) Click 'NEXT' on information



(6) Choose destination location screen appears (click 'NEXT')



PenMount Utilities Setup

PenMount Utilities for Win95/98/ME

Select Program Folder

Tekup will add program icons to the Program Folder listed below. You can type in new folder name, or select one from the existing folders list. Click Next to continue.

Program Folder:

Existing Folders:

- Acronis
- BartPE
- Carmen
- HyperSnap-DX 4
- Intel Ultra ATA Storage Driver
- Nvidia GeForce
- Real
- Samsung USB Camera
- StarUp

< Back Next > Cancel

Hardware Utilities Setup

PenMount Utilities for Win95/98/ME

Start Copying Files

Setup has enough information to start copying the program files. If you want to review or change any settings, click Back. If you are satisfied with the settings, click Next to begin copying files.

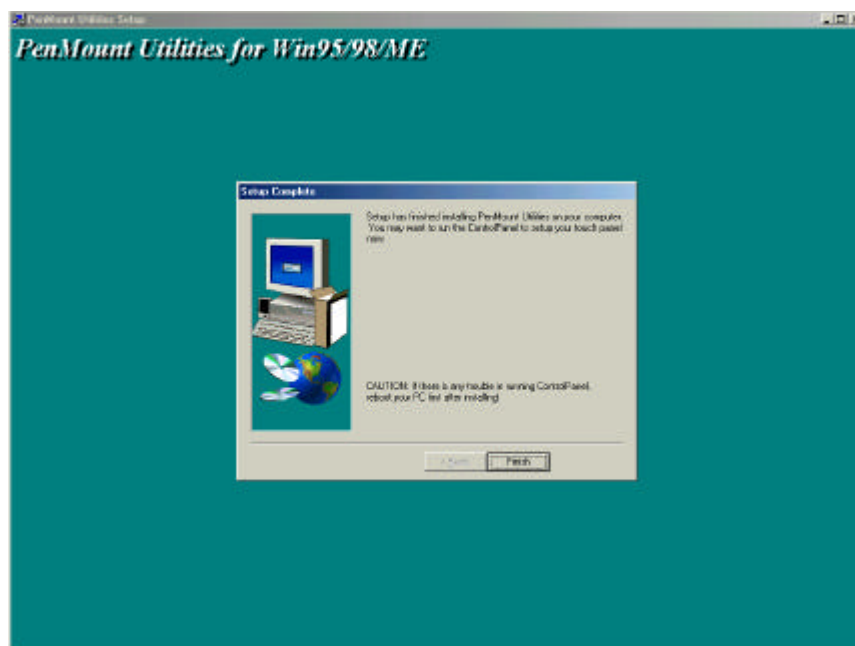
Current Settings:

Destination Folder:
C:\Program Files\PenMount\Setup\...

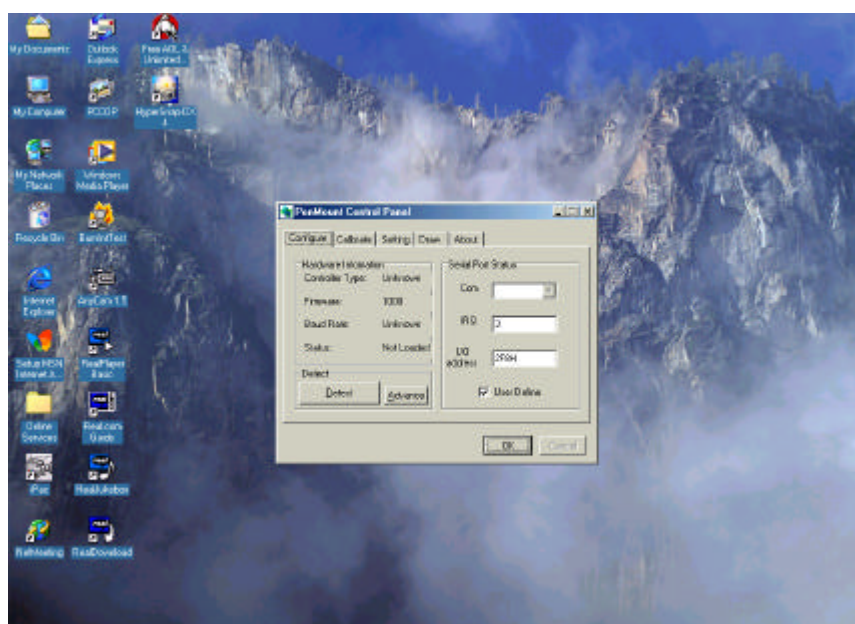
Program Folder:
PenMount Utilities

Back Next > Cancel

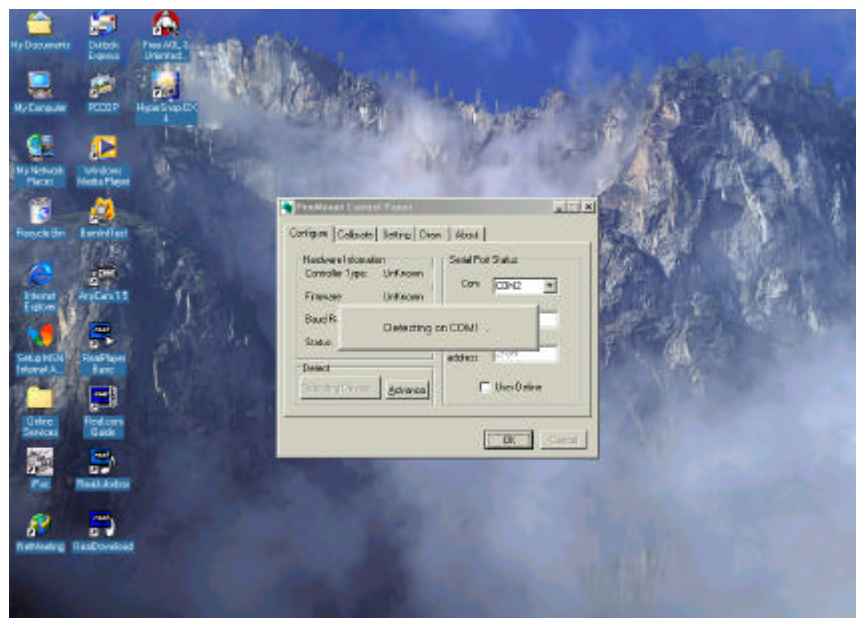
(9) Click 'FINISH' when screen of setup complete appears



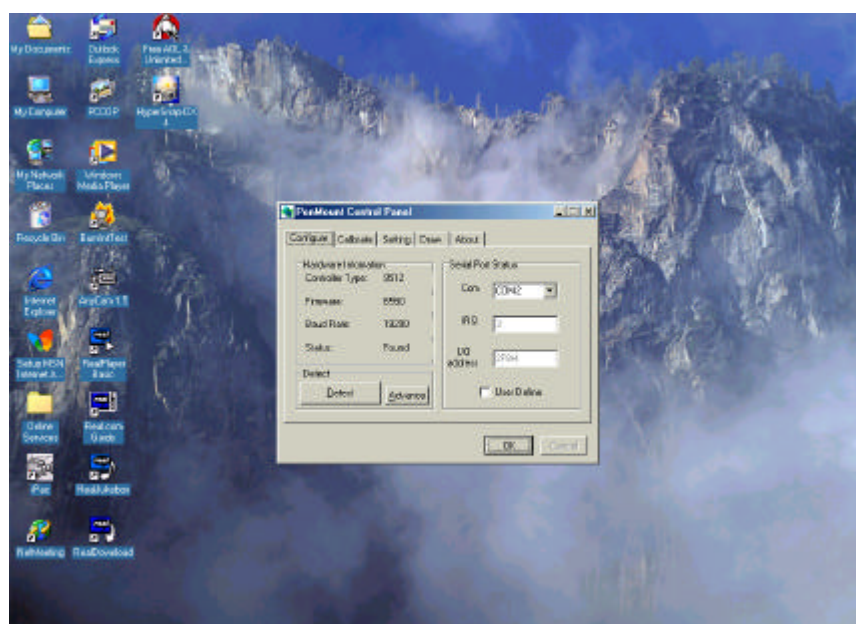
(10) Screen of PenMount Control Panel appears after program installation.



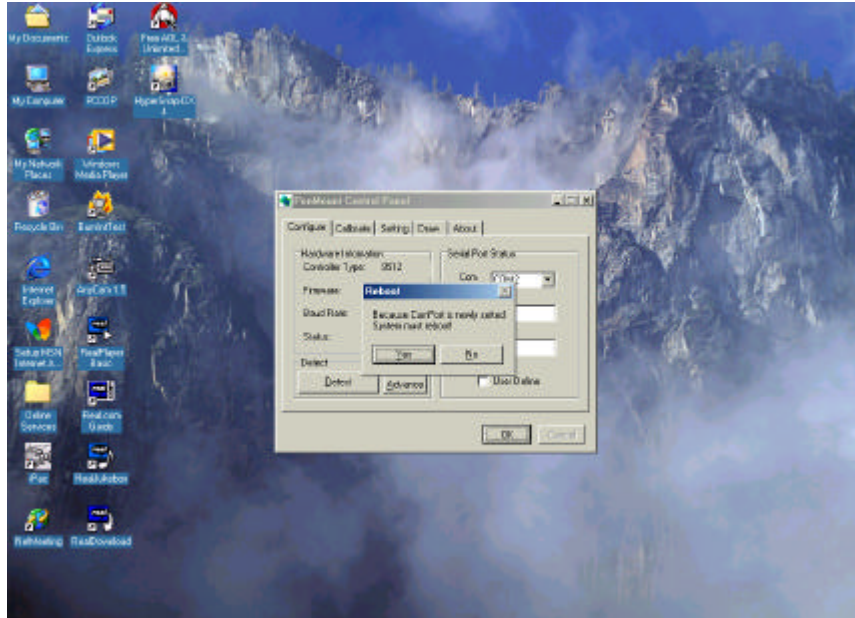
(11) Screen of detecting touch driver



(12) Screen of detected touch driver

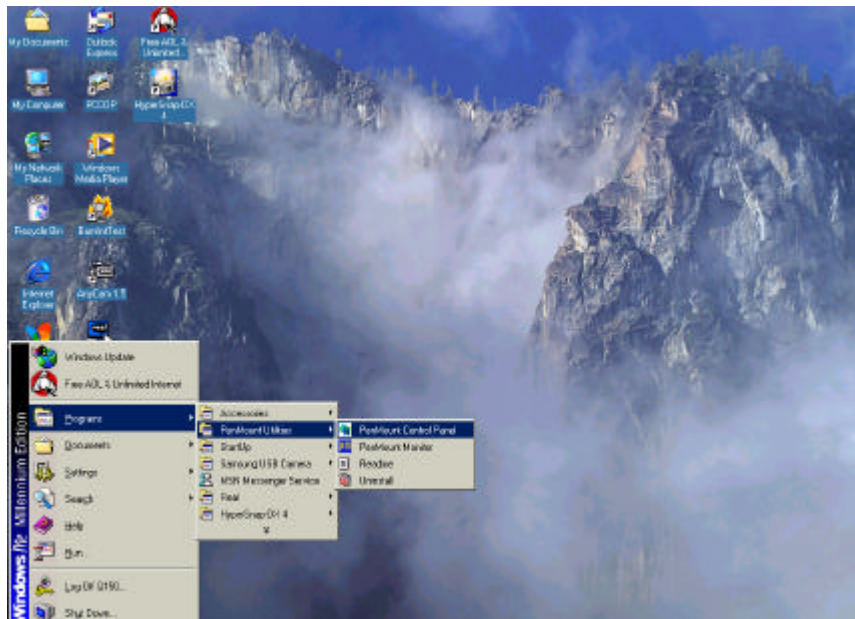


(13) After detecting touch driver, click 'YES' to reboot system.

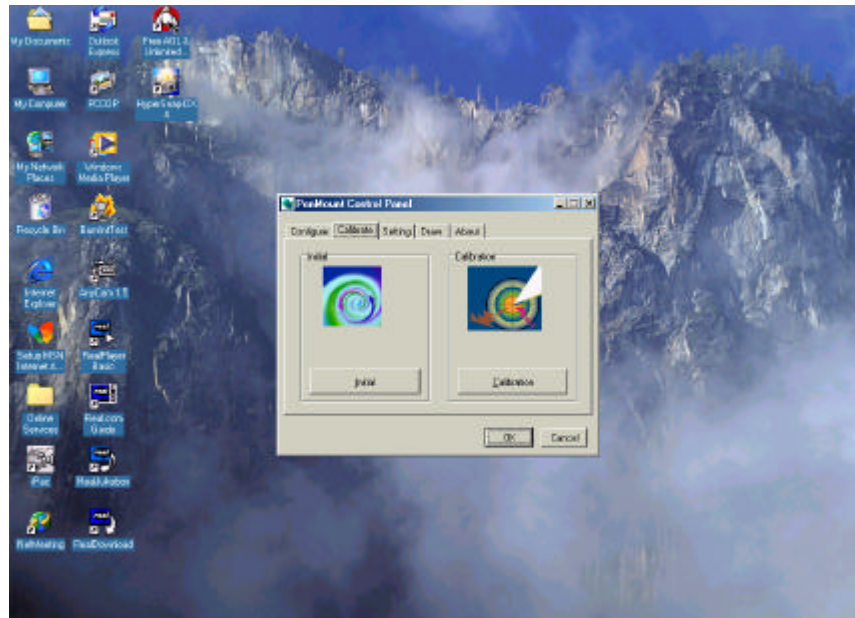


(14) After rebooting, setup touch calibration

'START' > 'PROGRAM' > 'ENMOUNT' > 'PENMOUNT CONTROL'

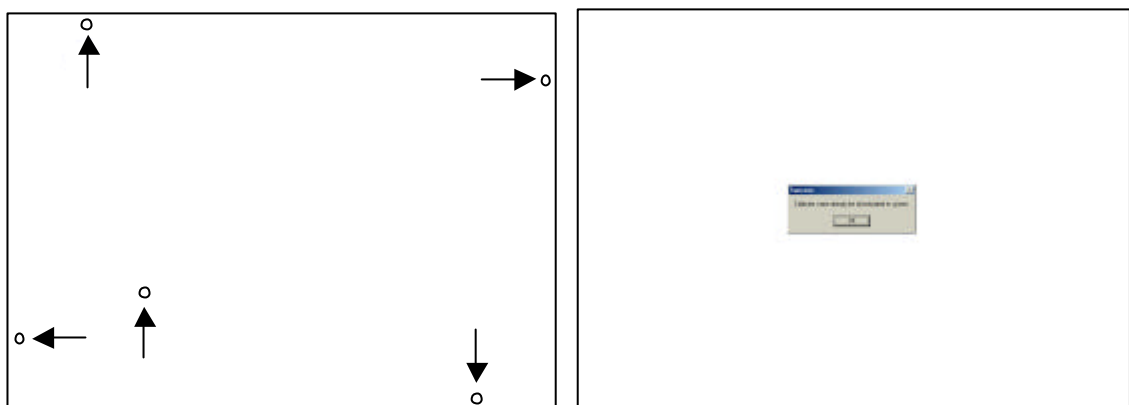


(15) Select calibration



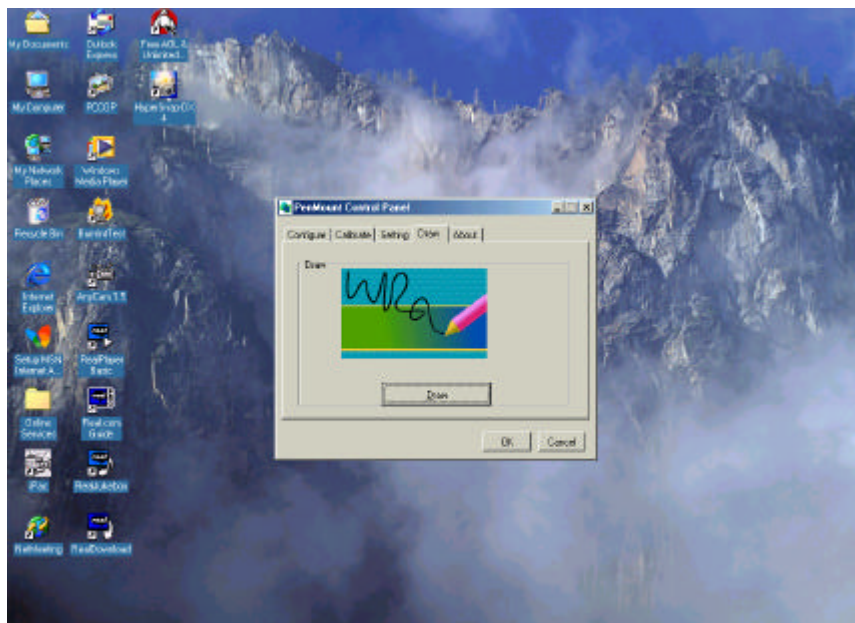
(16) Screen will turn to white, point mark appears five times on screen, push center of mark with Penmount.

After five times selection, click 'OK' when screen of success appears

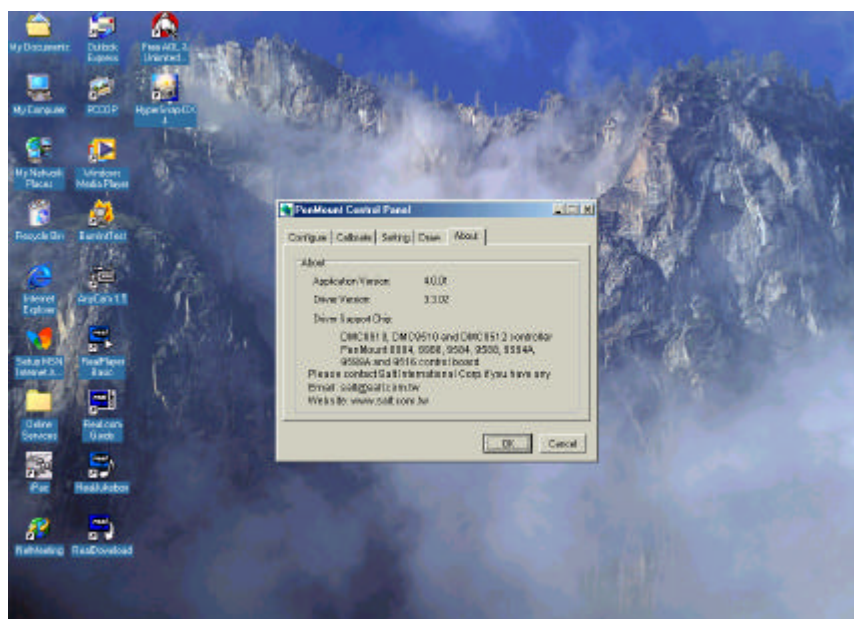


- 59 -

(18) Screen of test drawing

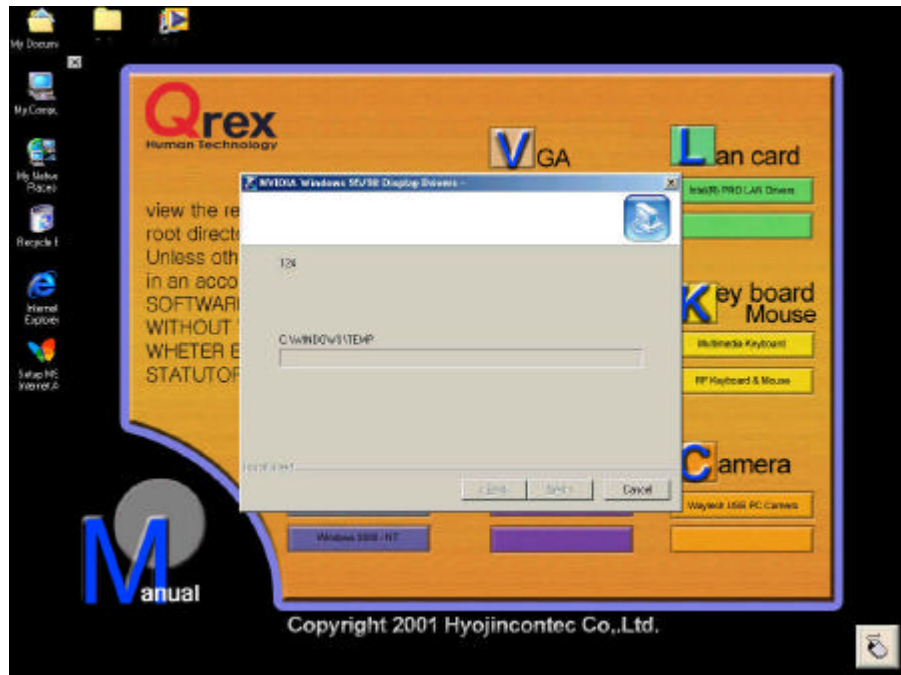


(19) Click 'OK' after setting



Installing VGA (NVIDIA) Driver

1. Click Nvidia button in window of driver CD



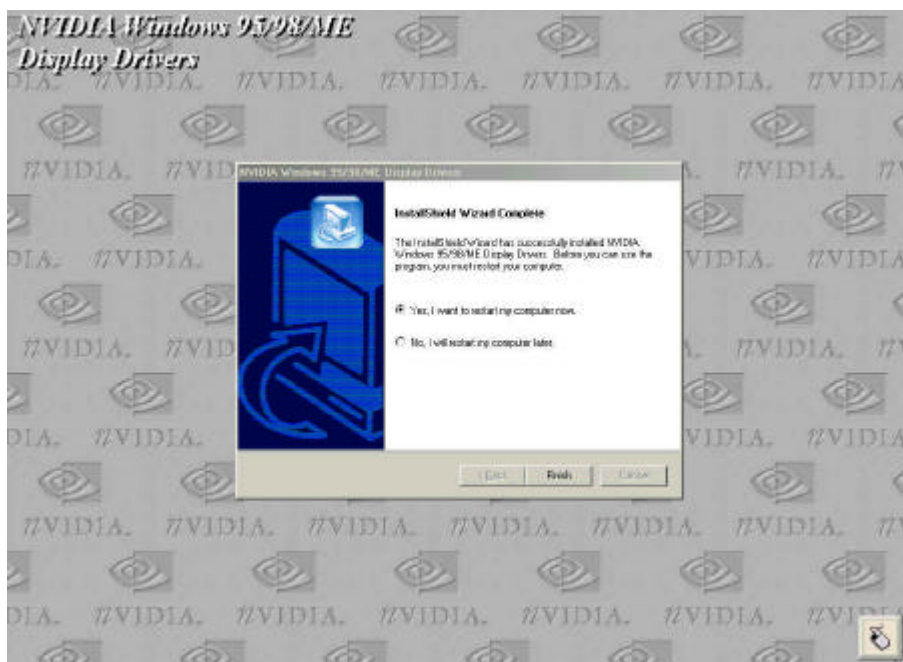
2. Click 'NEXT'



3. Screen of file copying

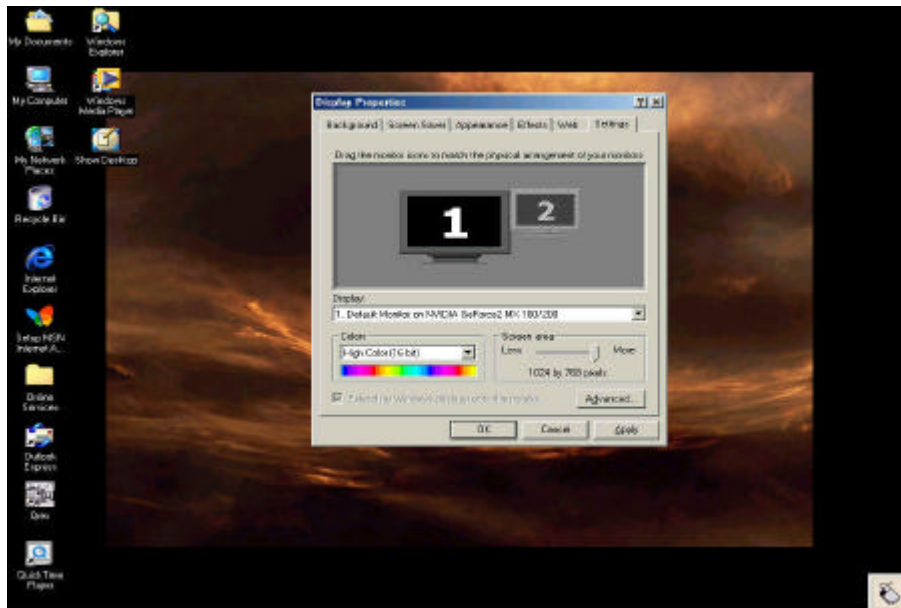


4. Click 'Finish' to restart system.

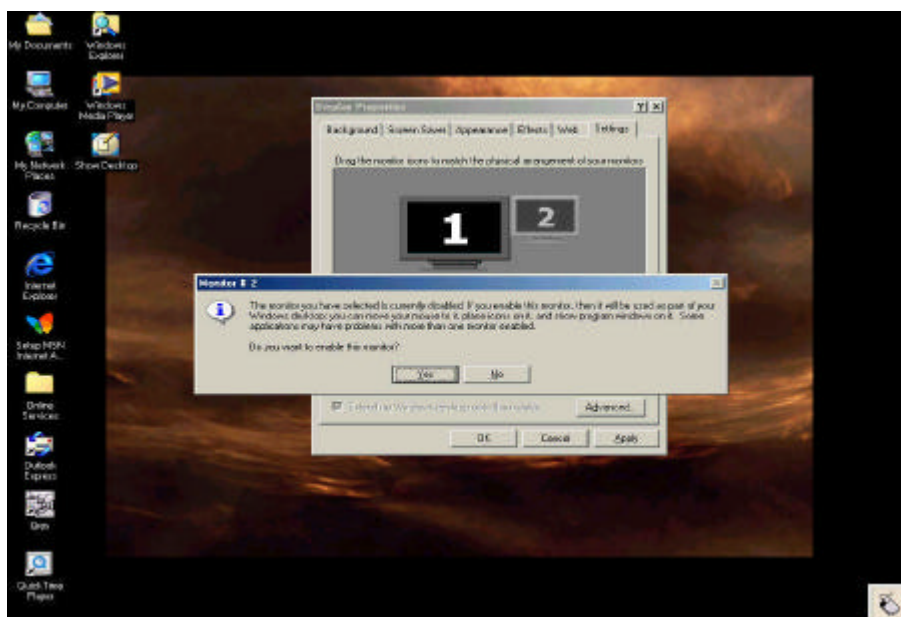


Setting Twin View

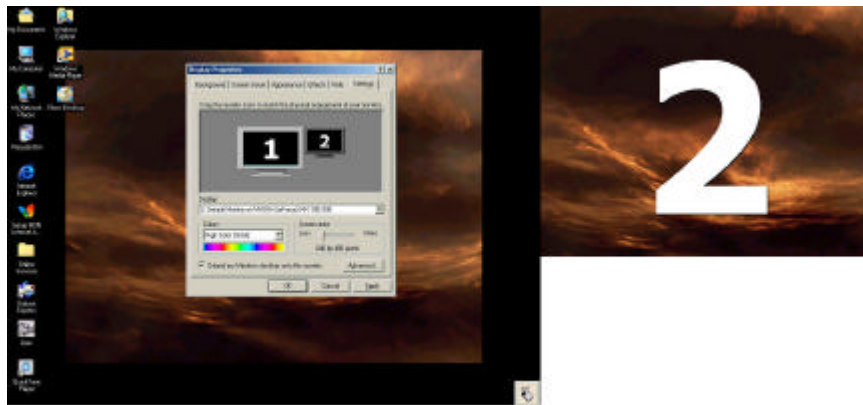
1. Go to Display properties (click mouse right button on desktop) has a monitor is connected to Qrex



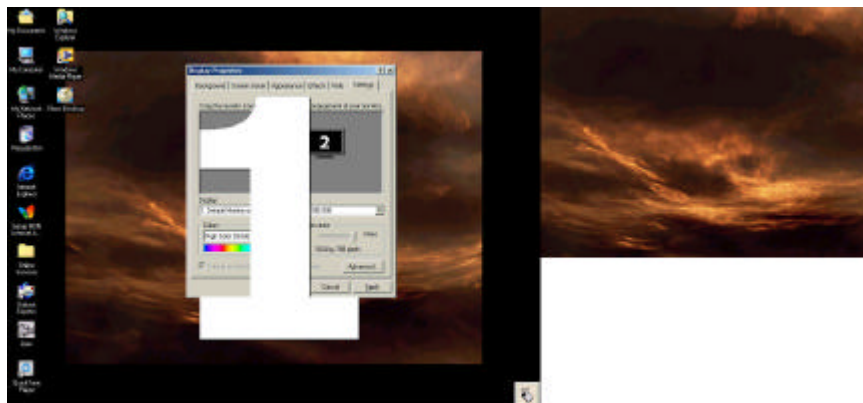
2. Click #2 in window and message window will appear to ask to enable the connected monitor . Click 'YES'



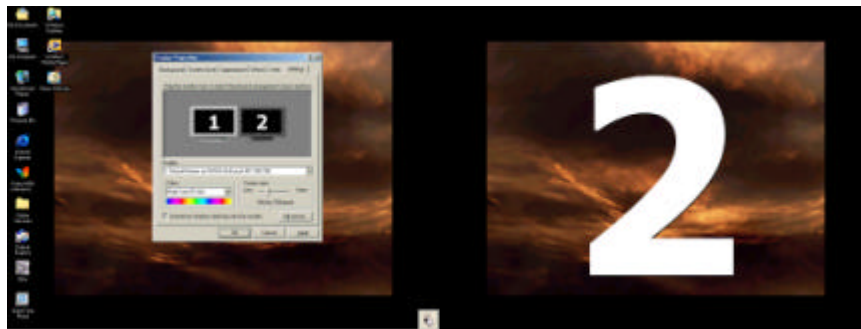
3. The monitor #2 will be confirmed as you hold down mouse left button (2 – 3 seconds) on #2 In window.



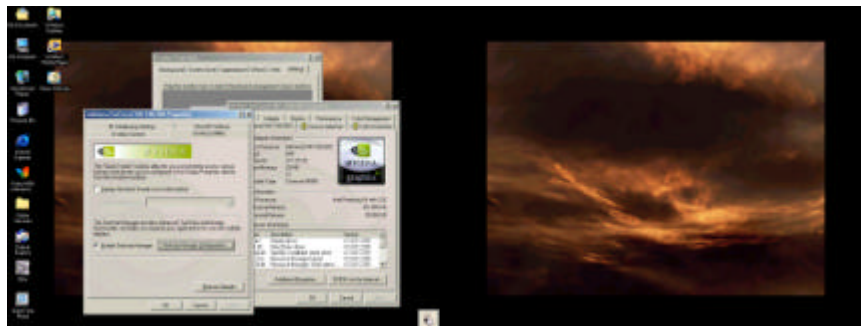
4. The monitor #1 will be confirmed as you hold down mouse left button (2 – 3 seconds) on #1 in window.



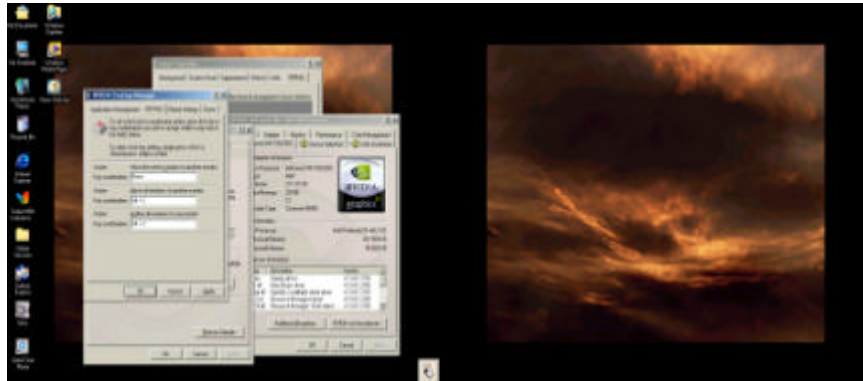
5. Resolution can be set individually #1 and #2. Initially secondary monitor resolution is 640 x 480 (high color 16 bit)



6. Go to 'Advanced ->' 'Geforce 2 Mx 100/200' -> 'Additional properties'



7. To set 'Hot key' for twin view, go to 'Desktop Utilities'. Check 'Enable Desktop manager' and go to 'Desktop Manager Configuration'



8. 'Hot key' is set as below initially. (default setting)
Alt + 1 : Move the active window to another monitor
Alt + 2 : Move all windows to another monitor
Alt + 3 : gather all window to one monitor.

Chapter 7. System Upgrade

Take a system apart

1. Back side of system



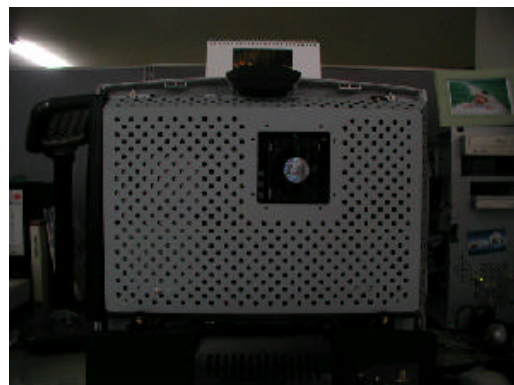
2. Remove four pieces of bolts



3. After removing, take a cover apart from upper side



4. Feature of disjointing of back cover



Changing HDD

1. Formation of the inside



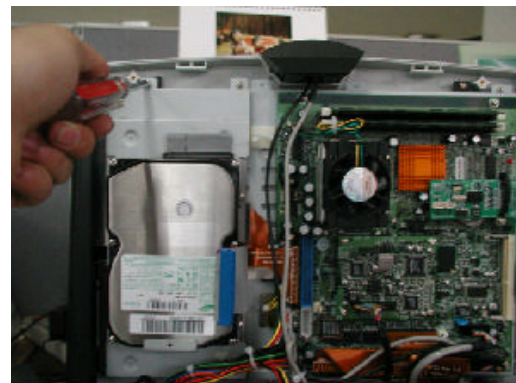
2. Chang HDD



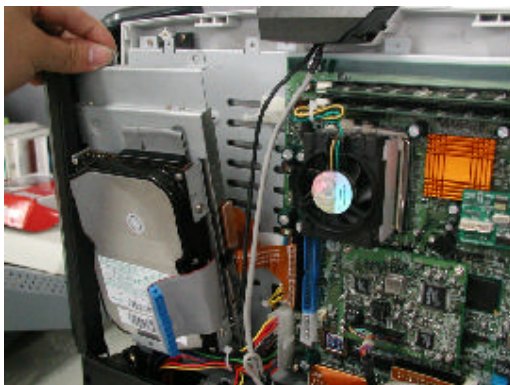
3. Separate HDD cable that connected main board and HDD main power



4. Remove two pieces of upper bolts from bracket



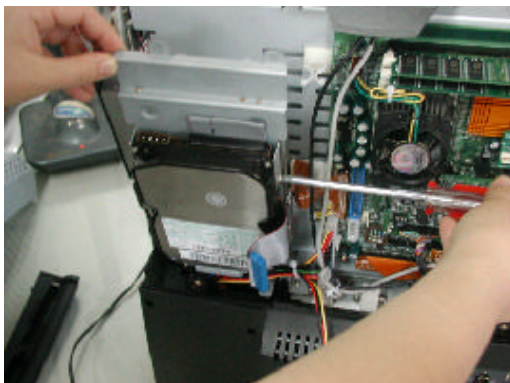
5. Bend up bracket softly



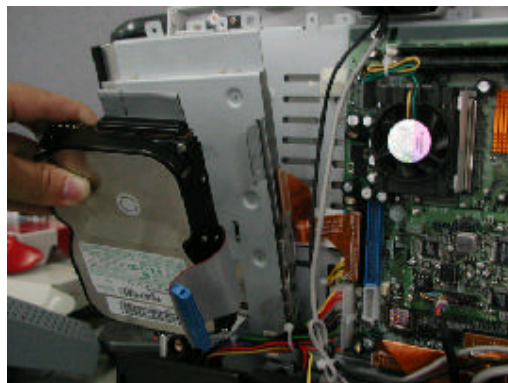
6. Ben bracket softly then separate CD-ROM and FDD cover



7. Remove four pieces bolts of the side



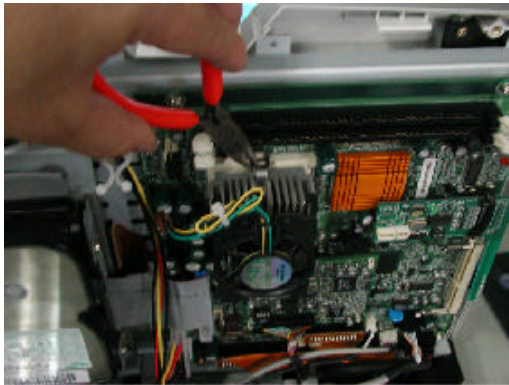
8. Change HDD. Assembling is an opposite order



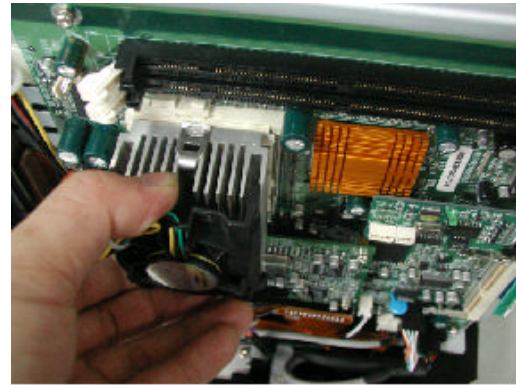
Caution : If you bend it rough, CD-ROM and FDD cable may off.

Changing CPU

1. Remove CPU cooler clip from slot with long-nose plier.



2. .Disassemble CPU cooler from CPU

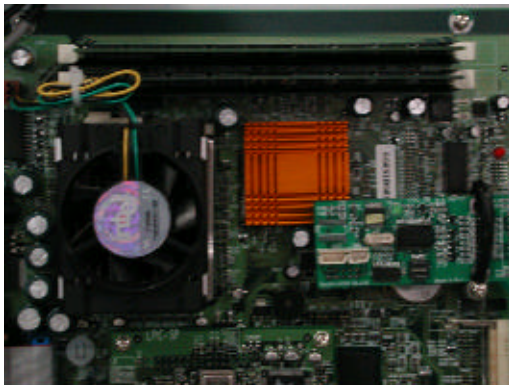


3. Pull back CPU locking rod and remove CPU
Assembly is counter order of disassembly

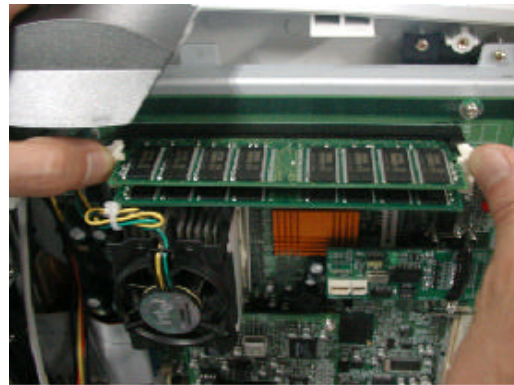


Changing RAM

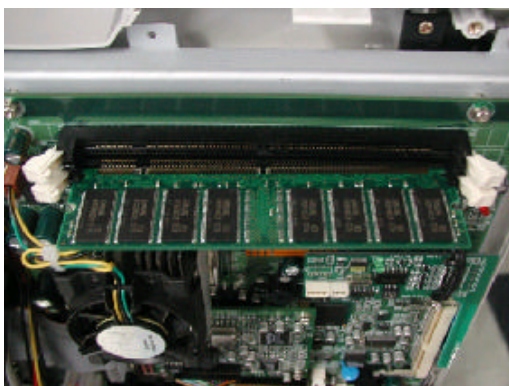
1. Point



2. Push both hooks of RAM slot with both hands and then take off the RAM

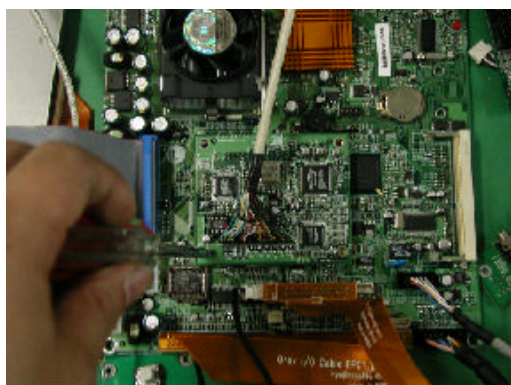


3. When you install RM, check up number of slot / RAM and then push the RAM

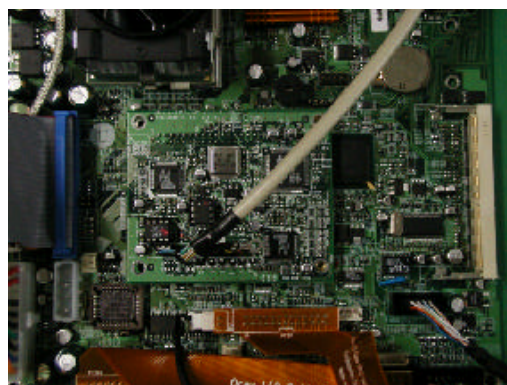


Changing VGA card

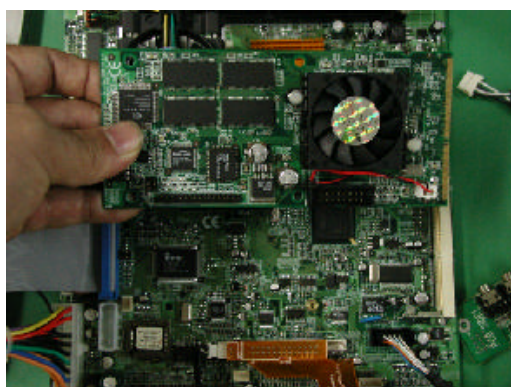
1. Remove four bolts of board



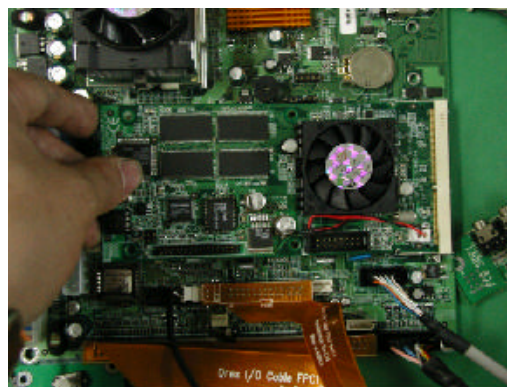
2. After removing take off LCD cable and then take up board



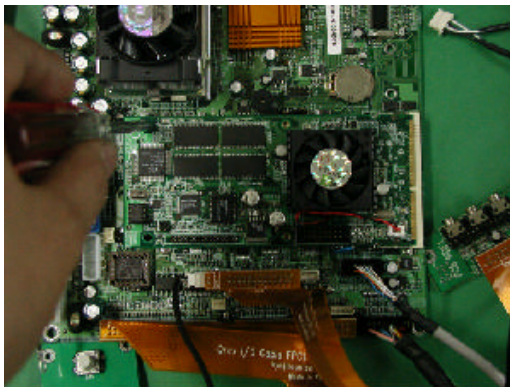
3. Insert the card to slot obliquely and then push to downside



4. install VGA card to slot

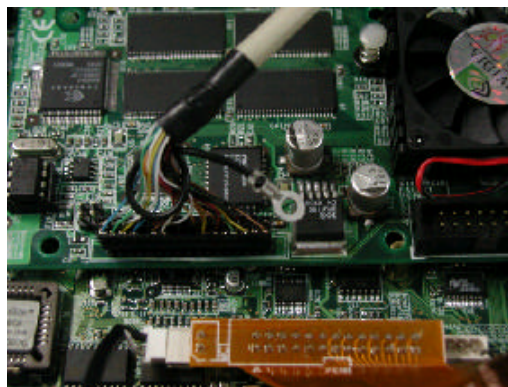


5. Tighten four bolts

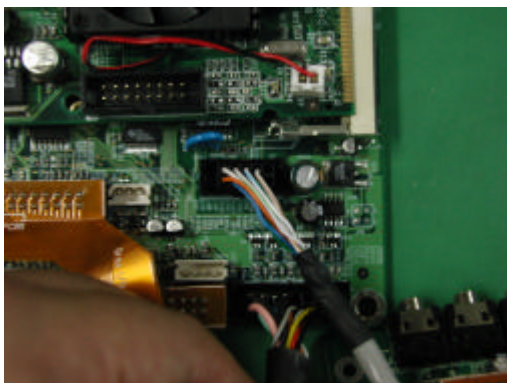


6. Connect LCD cable

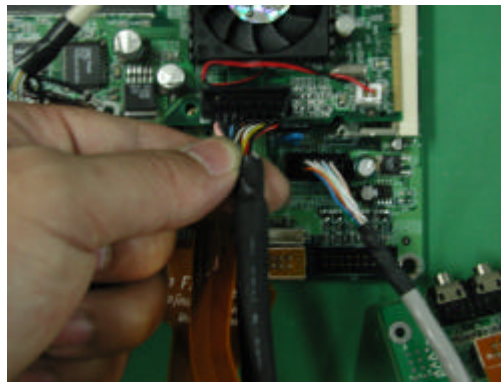
(When you connect cable, pin has to connect to board 1)



7. Take off CRT VGA cable from board



8. Insert VGA cable CRT connector of VGA card



Chapter 8. BIOS SETTING

What is BIOS?

BIOS means fundamental Input / Output. It is a kind of FIRMWARE that control Input / Output of computer.

FIRMWARE is a program that installed in hardware. This program controls operation of relevant hardware.

BIOS is installed to main board with FLASH ROM chip style. BIOS does important function that recognizes other devices and makes booth up.

The contents of BIOS setting are date and time of system, hard disk, CD-ROM drive, graphic card and the other devices. BIOS controls whole processions till computer booth up.

BIOS setting





BIOS SETUP means CMOS SETUP.

When you turn on computer, VIOS of graphic appears temporally and then BIOS name, version information, KEY for BIOS SETUP appears. At this time, if you push 'DEL' key, beginning screen of BIOS SETUP appears.

In the beginning screen of BIOS SETUP, there are various menus; Standard CMOS SETUP.

If you select these menus, you can setup each part detail.

Standard BIOS Menu

Standard CMOS Features	Frequency/Voltage Control
Advanced BIOS Features	Load Fail-Safe Defaults
Advanced Chipset Features	Load Optimized Defaults
Integrated Peripherals	Set Supervisor Password
Power Management Setup	Set User Password
PnP/PCI Configurations	Save & Exit Setup
PC Health Status	Exit Without Saving
ESC : Quit	    : Select Item
F10 : Save & Exit Setup	
Time, Date, Hard Disk Type...	

Standard CMOS Features

This standard setup menu allows users to configure system components such as date, time and hard disk drive, floppy disk drive, display and memory.