



SPB-2808

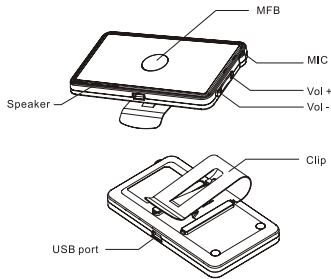
## Bluetooth Handfree Car Kit

User's Guide

1

### About Bluetooth speakerphone

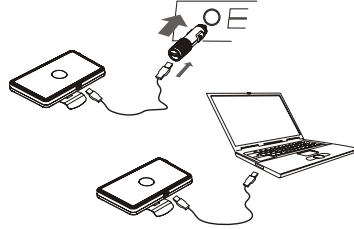
The Bluetooth speakerphone is compatible with most Bluetooth mobile phones. Fully portable, it is an ideal wireless communication solution for in-car or office use within a maximum range of 10 meters. Built-in echo cancellation and noise suppression.



2

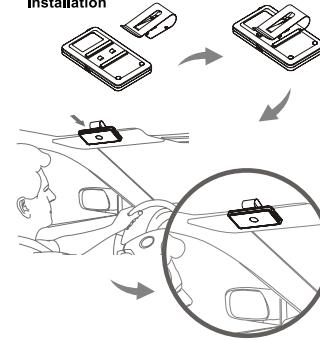
### Charging

Make sure that your speakerphone is fully charged before using it. Use only the charger provided. Do not use chargers from any other devices as this might damage the device. A full charge is approximately 3 hours.  
To charge your speakerphone:  
(1) Connect to a main charger or a USB power cable to charge.  
(2) Red LED is indicated on the speakerphone, when it is charging.  
(3) The red LED is off, when the device is fully charged.



3

### Installation



4

### Functional Definition

'ON/OFF' Button	Power ON/OFF
'MFB' Button	Pairing Connecting Answering Call End Call Reject Call Voice Dial
'Vol+' and 'Vol-' Buttons	Volume Adjustment
Passkey Code	Fixed Passkey Code: 1234

#### Power on/off

Press and hold the multi-function control key for about 4 seconds until the blue LED indicator starts flashing or a tone is heard from the speakerphone. Now the speakerphone is on and in Standby mode. Press and hold the multi-function control key for about 2 seconds until the red LED indicator flashes or a tone is heard from the headset. The speakerphone is now off. Note: The red LED indicator will be flashing when the battery is low.

5

### Pairing

"Pairing" means creating a trusted relationship between two or more Bluetooth devices. The devices must be paired before they can communicate with each other. Pairing identification is stored for later use, and the devices will automatically recognize each other the next time they are connected.

Note: Before use, speakerphone must be paired with another Bluetooth enabled device. speakerphone can save up to 7 device IDs in memory, although it can communicate with only one device at a time. The 7 IDs will be stored in the device list by order. When more than 7 devices are paired with the unit, the oldest one will be deleted. The speakerphone can only automatically connect with the most recently paired device.

#### How to pair with cellphones

1. Place the speakerphone within 30 cm of the device to be paired with.
2. While the speakerphone is off, press and hold the multi-function control key for about 6 seconds, until the red and blue LEDs flash alternately. The speakerphone will now be in Pairing mode.
3. Initiate the Bluetooth search function in the cellphone. Please refer to the user's manual of the cellphone for more information.
4. Select "SPB-2808" in the device list on the phone and follow the instructions to proceed.
5. Follow the instruction to enter pairing code "1234" The red LED indicator will stop flashing if pairing is successful. SPB-2808's device ID will be stored in the device list of the phone so that no pairing will be required for the next use.

6

### Volume adjustment

Press the Vol+ button briefly to increase the volume. A separate tone will be heard when the unit is at maximum volume. Press the Vol- button to decrease the volume. A separate tone will be heard when the unit is at minimum volume.

#### Answering/Ending phone calls

##### 1. Making Calls

You can initiate calls from your mobile phone, or directly from your Speakerphone using voice dialing commands(if this feature is supported by your mobile phone).

##### 2. Making Calls from your mobile phone

Dial directly from mobile phone. The call is automatically connected to your Speakerphone.

##### 3. Receiving Calls

When your mobile phone rings, press the "MFB" button on the Speakerphone to connect the call.

##### 4. Ending Calls

When you have finished your call, press the "MFB" button on the receiver to disconnect the call.

##### 5. Rejecting Call

Hold onto the "MFB" button 3 seconds to reject an incoming call.

#### Care and Maintenance

(1) Do not expose the Speakerphone to liquid, moisture or humidity, as it is not waterproof.

(2) Do not use abrasive cleaning solvents to clean the Speakerphone.

(3) Do not place the Speakerphone in high temperature, as it will result in an explosion.

7

- (4) Do not expose the speakerphone contact with sharp objects as this will cause scratching and damage.
- (5) Do not stick anything inside the speakerphone, as it does not contain serviceable components.
- (6) Do not attempt to disassemble the speakerphone, as it does not contain serviceable components.
- (7) If you do not use the speakerphone for long periods, be sure to store it in a dry place, free from extreme temperature, humidity and dust.

#### Safety Information

- (1) Check local laws regarding use of a mobile handset and while driving. If you use the speakerphone while driving, ensure your attention and focus remains on your responsibility of driving safely.
- (2) Never allow children to play with the speakerphone. Small parts may be a choking hazard.
- (3) Observe all signs that require an electrical device or Therefore radio product to be switched off in the designated areas. These could include hospitals, blasting areas, and potentially explosive atmospheres.
- (4) Turn off your speakerphone prior to boarding an aircraft. Do not use your speakerphone in the aircraft.
- (5) Never mount or store your speakerphone over any air bag deployment area. Serious injury may result when an air bag deploys.

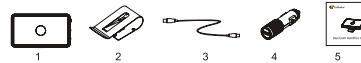
#### Product Specifications:

- \* Bluetooth Compliance: v2.0
- \* Operating Frequency Band: 2.4GHz ~ 2.48GHz unlicensed ISM band
- \* Output Power: Class 2 Power Output, Up to 10 Meters
- \* Support Profiles: Headset and Hands free 1.5 profiles

8

- \* Support Multiple paired Device: Up to 7 Bluetooth phone can be paired
- \* Battery Type: Rechargeable Lithium DC 3.7V, 450mA
- \* Charger Voltage: DC5.0V 400mA
- \* Talk Time: 5-6 hours
- \* Standby Time: 400 hours
- \* Charging Time: 2-3 hours

#### Package contents



1. Bluetooth Handfree Car Kit
2. Clip
3. USB power cable
4. DC car charger
5. User's Guide

Designed/Manufactured by

**Audex** Telecom Industrial Co., LTD.

http://www.celleden.com E-mail: sales@audex.cn

**Celleden** is the trademark of Audex Telecom Industrial Co., Ltd. © 2006 www.celleden.com. All Rights Reserved. Audex Telecom retains the right to modify & improve the product's features & design without prior notice.

Printed in China SPB2808V01030

## FCC Caution:

Any Changes or modifications not expressly approved by the party responsible for compliance could void the user's authority to operate the equipment.

This device complies with part 15 of the FCC Rules. Operation is subject to the following two conditions: (1) This device may not cause harmful interference, and (2) this device must accept any interference received, including interference that may cause undesired operation.

This equipment complies with FCC radiation exposure limits set forth for an uncontrolled environment.

This equipment should be installed and operated with minimum distance 20cm between the radiator & your body.