

INTERNAL PHOTOS	
Company Name	Ultimate Kronos Group
FCC ID #	P5W-8610U003
IC #	1416A-8610U003



Figure 1: EUT External Chassis Open



Figure 2: External Chassis Back - AC/DC Power Converter, Back-up Battery, Transition Board



Figure 3: Internal Chassis



Figure 4: Sterling LWB Compartment

Note: Module shown is optional. EUT is not marketed with the module already installed.

INTERNAL PHOTOS	
Company Name	Ultimate Kronos Group
FCC ID #	P5W-8610U003
IC #	1416A-8610U003



Figure 5: Internal Chassis Removed - Motherboard, HID Proximity reader



Figure 6: HID Proximity reader

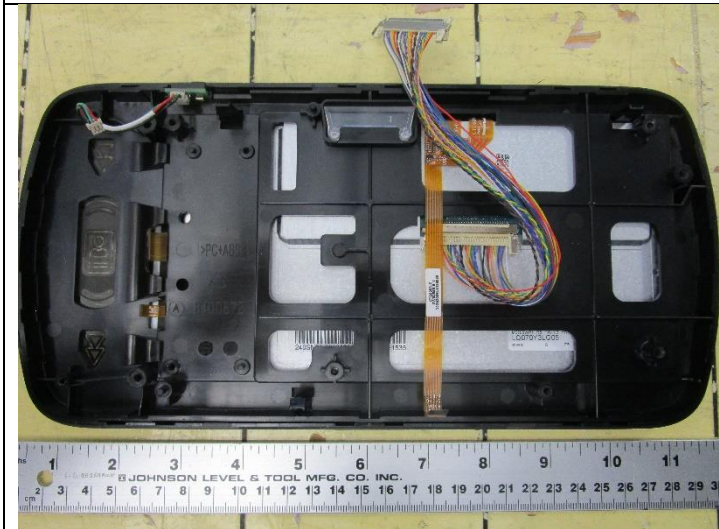


Figure 7: Display Back

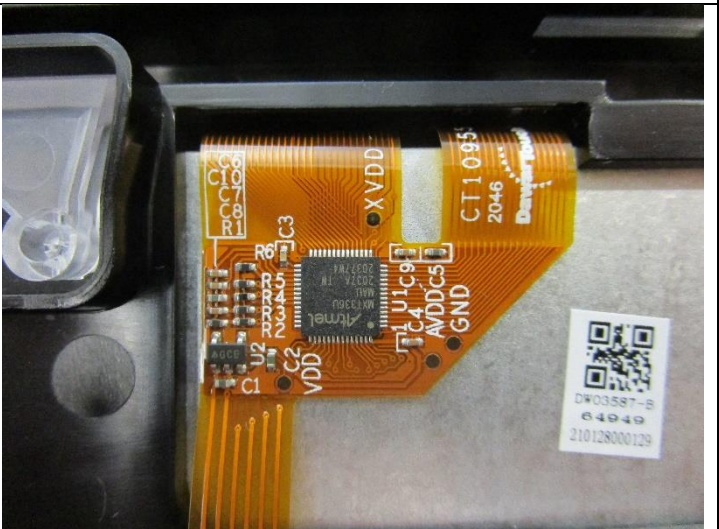


Figure 8: Display Transition Circuit

INTERNAL PHOTOS	
Company Name	Ultimate Kronos Group
FCC ID #	P5W-8610U003
IC #	1416A-8610U003

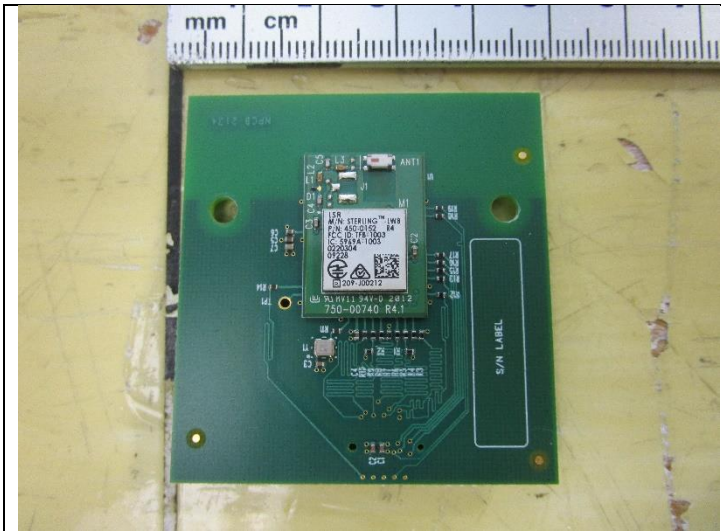


Figure 9: Sterling LWB

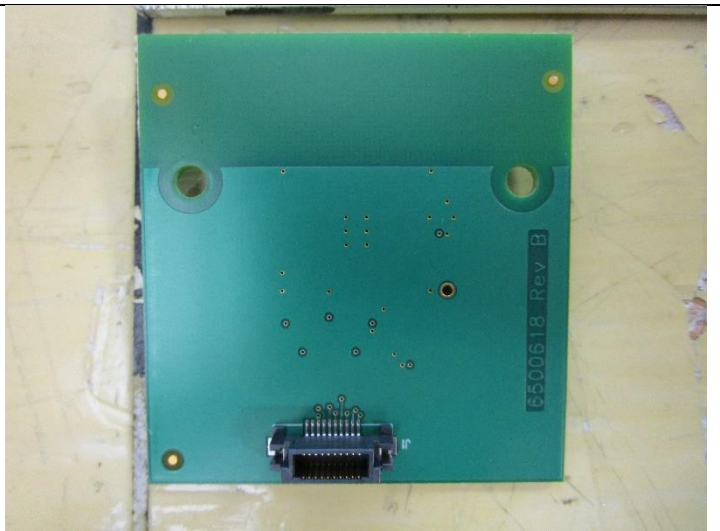


Figure 10: Sterling LWB - Back

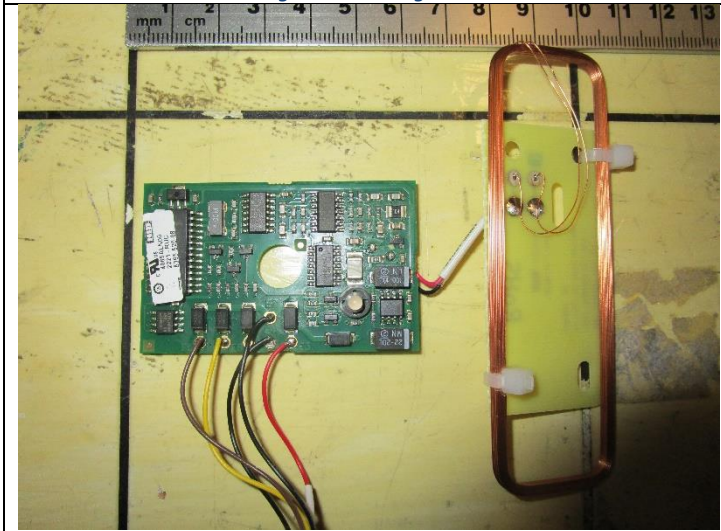


Figure 11: HID Proximity reader & Antenna - Front

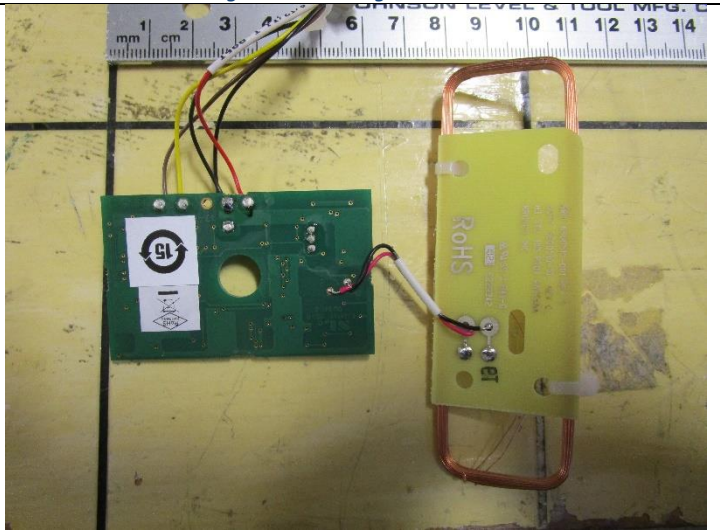


Figure 12: HID Proximity reader & Antenna - Back

INTERNAL PHOTOS	
Company Name	Ultimate Kronos Group
FCC ID #	P5W-8610U003
IC #	1416A-8610U003

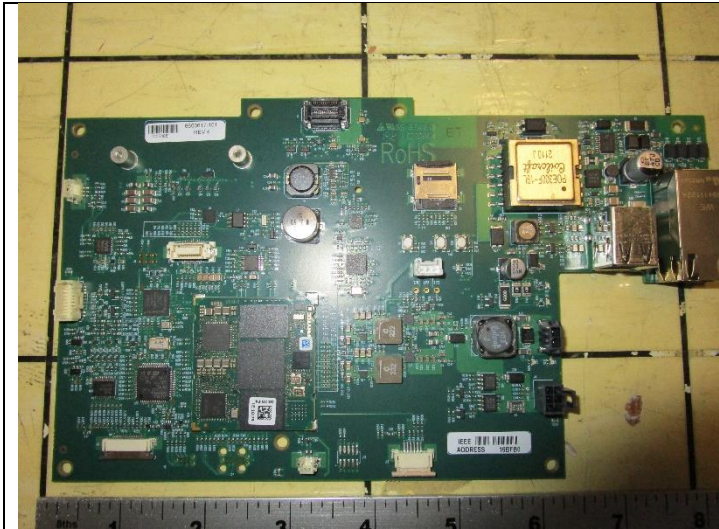


Figure 13: EUT Motherboard - Front

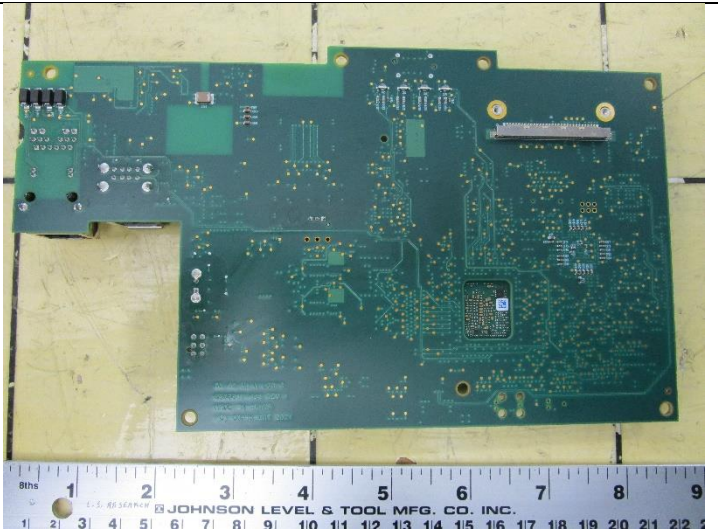


Figure 14: EUT Motherboard - Back

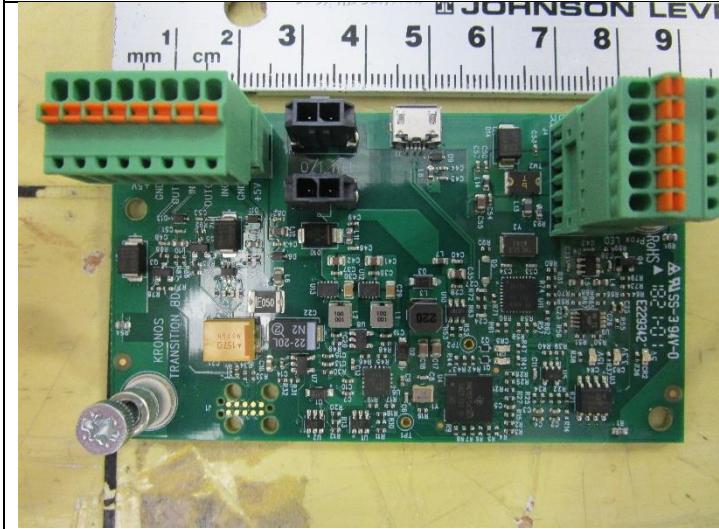


Figure 15: Power Transition Board

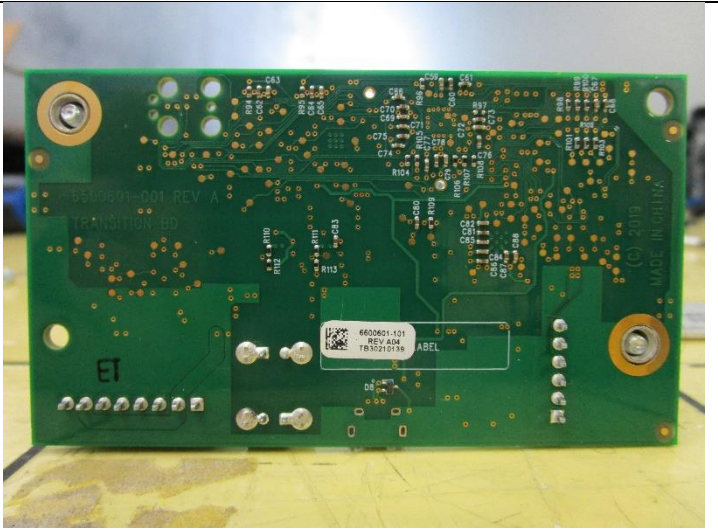


Figure 16: Power Transition Board - Back

INTERNAL PHOTOS	
Company Name	Ultimate Kronos Group
FCC ID #	P5W-8610U003
IC #	1416A-8610U003

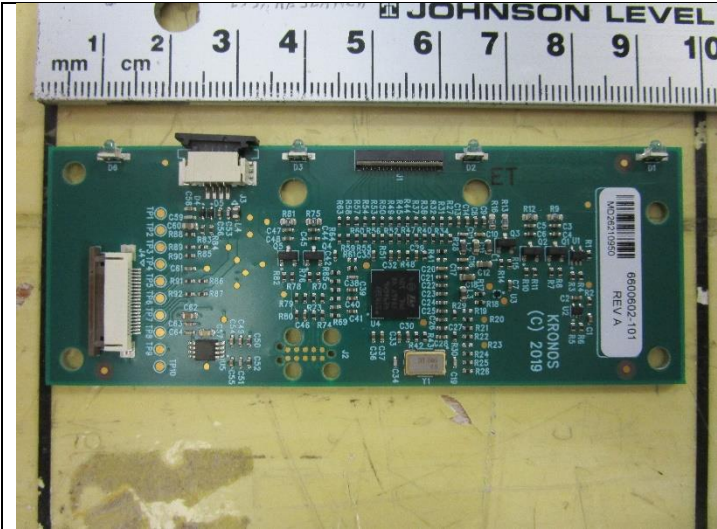


Figure 17: External Input Transition Board

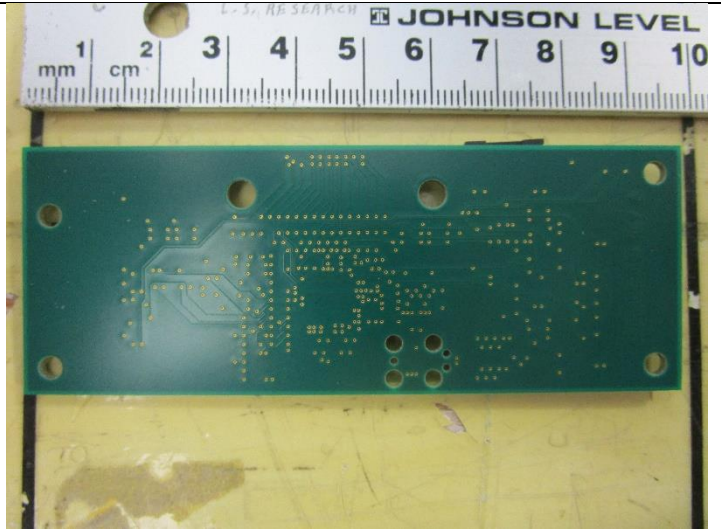


Figure 18: External Input Transition Board - Back