

ELESIGN VoIP GATEWAY

User Manual



COMPLIANCES



ELESIGN

FCC Class B Certification

1. This device complies with Part 15 of the FCC Rules. Operation is subject to the following conditions: This device may not cause harmful interference.
2. This device must accept any interference received, including interference that may cause undesired operation.

Warning! This equipment has been tested and found to comply with the limits for a Class B digital device, pursuant to Part 15 of the FCC Rules. These limits are designed to provide reasonable protection against harmful interference in a residential installation. This equipment generates, uses and can radiate radio frequency energy and, if not installed and used in accordance with the instructions, may cause harmful interference to radio communications. However, there is no guarantee that interference will not occur in a particular installation. If this equipment does cause harmful interference to radio or television reception, which can be determined by turning the equipment off and on, the user is encouraged to try to correct the interference by one or more of the following measures:

- Reorient or relocate the receiving antenna.
- Increase the distance between the equipment and receiver.
- Connect the equipment into an outlet on a circuit different from the one to which the receiver is connected.
- Consult the dealer or an experienced radio / TV technician for help.

About This Manual

This Manual provides basic information on how to install and connect Elesign IP

Phone to the network. It also includes features and functions of Elesign IP phone components, and how to use them.

Before Getting Started

Before you can connect ELESIGN GATEWAY to the network and use it, you must have a high-speed Internet connection installed. A high-speed connection includes such environments as ADSL, cable modem, and a leased line.

Precaution

Elesign Inc. has copyright to this manual.

Any part of this manual cannot be reproduced or transferred electronically, mechanically, or acoustically without permission of Elesign Inc.

The material of this manual could be changed for the purpose of the product enhancement.

Copyright Elesign Inc. All rights reserved

Contents

Getting started with Elesign Gateway

1. Elesign Gateway



2. Installation of Elesign Gateway
3. Check Installation by LED

PC Network Setup

1. ADSL, Cable Modem, Leased –Dynamic IP Users
2. Leased – Static IP Users
 - ☐ WIN98/WIN*me* Users
 - ☐ WIN2000 Users

Elesign Gateway Network Set Up

Elesign Gateway H.323 Set Up

Make a Call using Elesign Gateway

Software Upgrade

Troubleshooting

Getting started with Elesign Gateway



1. Elesign Gateway

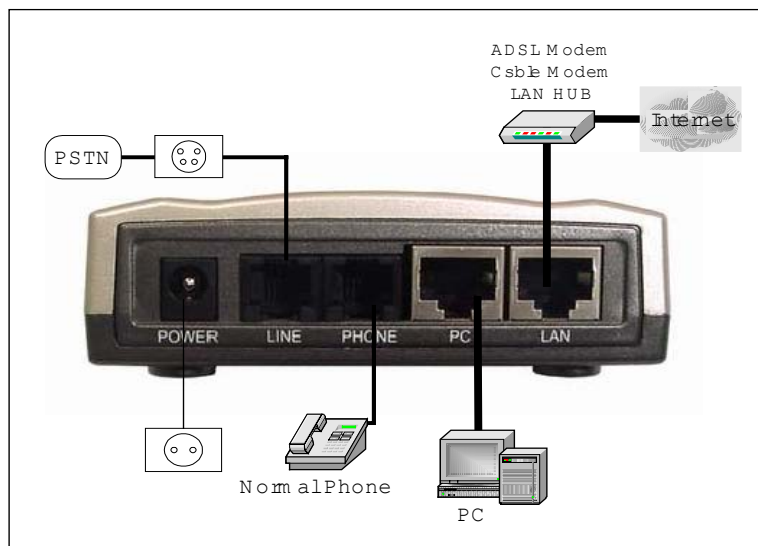
Elesign gateway is a 1-port gateway, which enables Internet phone call thru existing conventional phone. It's a stand-alone device, which means no PC connection is necessary to use Elesign Gateway except for the initial configuration thru built-in web-server.

Components check list

- ✓ 1 Elesign Gateway
- ✓ 1 LAN Cable
- ✓ 1 Telephone line cord
- ✓ 1 Elesign Gateway User Manual
- ✓ 1 Adaptor

2. Installation

- ☐ PC is not necessary to use Elesign gateway except for setup.



- ☐ Remove the phone line, which is connected from the wall jack to your existing analogue phone, and connect it to 'PSTN' port.
- ☐ Find a phone line in the box and connect between 'PHONE' port and your existing analogue phone
- ☐ Remove from your PC the LAN cable for Internet connection and connect it to 'UP' port.
- ☐ Find a LAN cable in the box and connect between 'PC' port and your PC.
- ☐ Connect an adapter in the box to 'POWER'.

3. Check Installation by LED



- ☐ When Internet line (LAN cable) is connected to ELESIGN GATEWAY, the color of 'Link' is 'Green'. And when Computer is connected and power of PC is turned on, the color changed to 'Orange'. If only PC is connected, color of 'Link' is 'RED'.
- ☐ When you pick up the handset of the telephone, the color of 'Hook' is 'Red'.
- ☐ When adapter is connected to ELESIGN GATEWAY, initial LED color of 'Phone' is orange and turns to green with 'click' sound.

PC Network Set Up

User should set up network PC to use the gateway. Please choose appropriate network environment you are using and follow the direction for PC network set up.

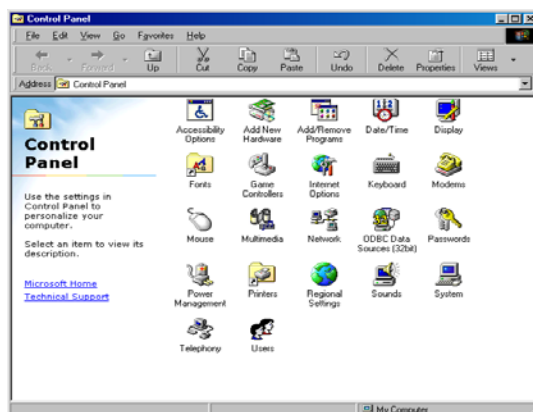
1. ADSL, Cable modem, Leased Line – Dynamic IP users

After the installation, please restart the computer.

If computer is turned off, simply turn on the computer after the installation.

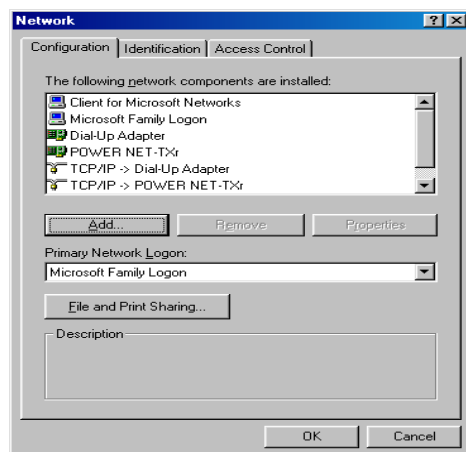
2. For Leased Line-Static IP Users

- ☐ For WIN98/ Window *Me* users
- ☐ Click on 'Start' button
- ☐ 'Select 'Control Panel' from 'setting' of start menu.

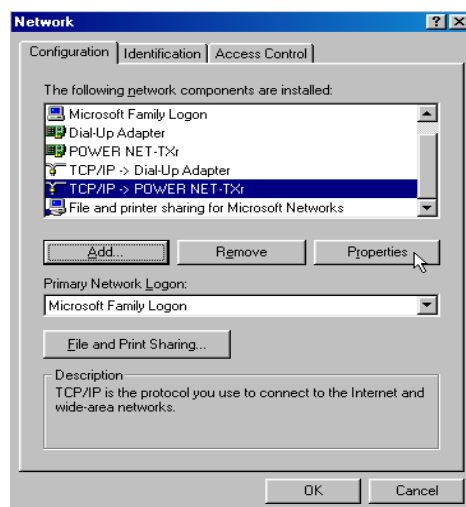


- ☐ Select 'Network' from control panel

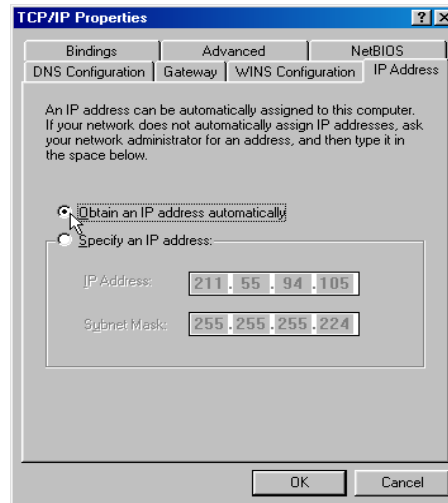




- ☐ Select TCP/IP and click on 'Property' button



- ☐ Select 'Obtain an IP address automatically' and click on 'OK' button



- Popup window will appear to restart the computer, then restart the computer right away by clicking on 'OK' button

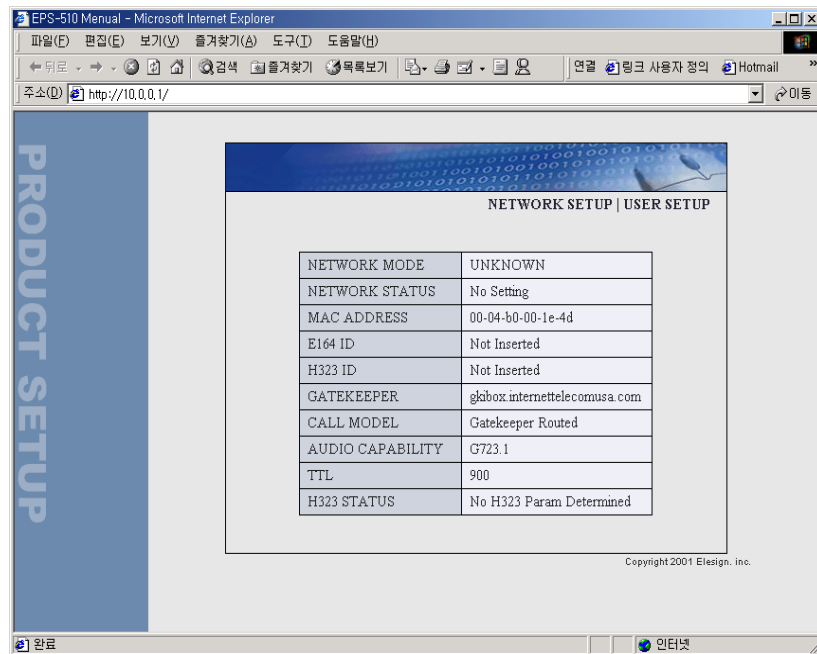
- ☐ **Win2000 Users**
- ☐ Click on 'Start' button
- ☐ Select 'Control Panel' from 'Setting' of start menu.
- ☐ Select 'Network'.
- ☐ Select 'Local Connection'
- ☐ Click on 'Properties' button
- ☐ Select 'TCP/IP' and click on 'Property' button.
- ☐ Select 'Obtain an IP address automatically' and click on 'OK' button.
- ☐ Click on 'OK' to close window.

Note: If you are leased line – static IP user, please write down the network information such as IP address, gateway, subnet mask, DNS, etc. before you select 'Obtain IP address automatically'. Those are necessary to do Gateway Network Setup.

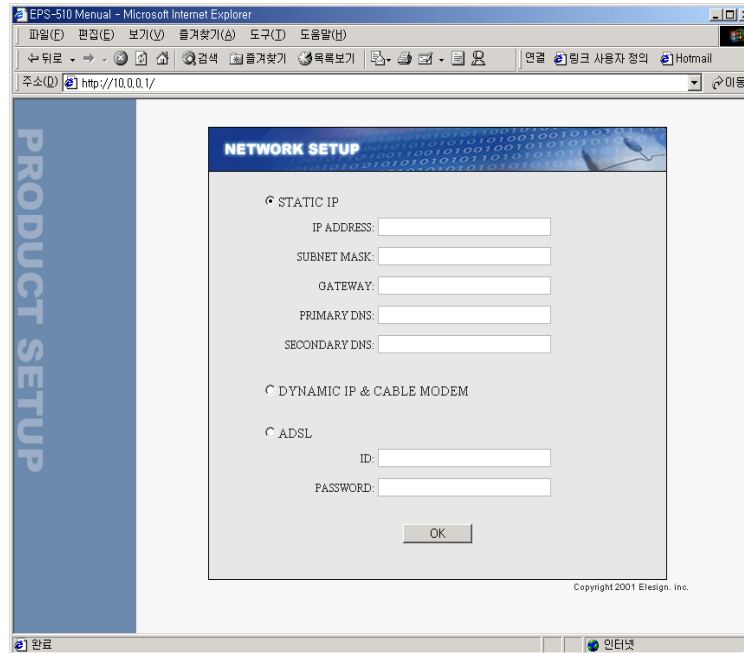
Elesign Gateway Network Set Up

User should set up for network to use access gateway thru Internet according to their current network environment.

1. Run Internet Browser (i.e. Explorer)
2. Input 'http://10.0.0.1' in the address box and hit enter



3. Select 'Network Setup'



4. Select an environment that is appropriate to your Internet connection, and input necessary information if needed, and click on 'OK' button
 - ADSL Modem Users: Please check on 'ADSL' and insert ID and password used to connect to Internet.
 - Cable Modem & Leased line – Dynamic IP users: Please check on 'Dynamic IP & Cable Modem', and click on 'OK'
 - Leased Line – Static IP users: Please check on 'Static IP', and insert the information that you have written down on PC network setup step. (IP address, gateway, subnet mask, DNS)
5. Please confirm the information appears, and hit 'F5' key.

6. When you see a message 'Setup complete' for 'Network Status', then network setup is successfully done.

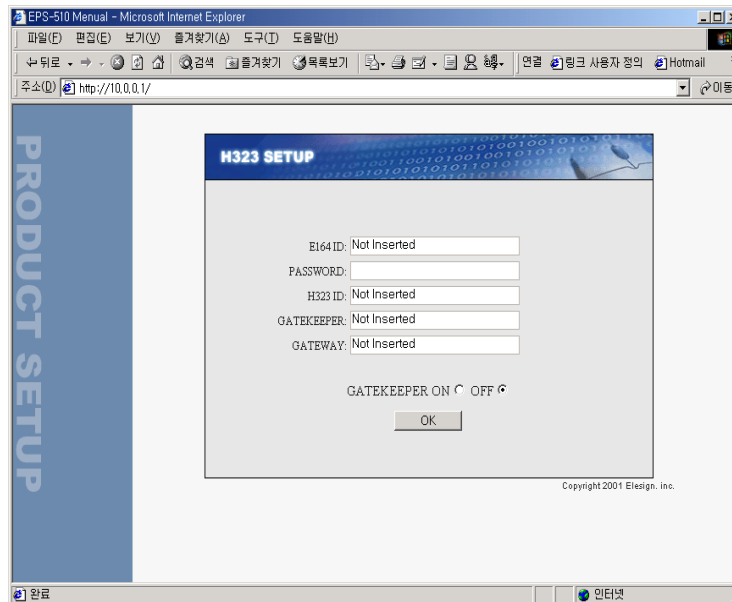
Note: If you see a message 'Now try setting up' in 'NETWORK STATUS', then set up is now in progress. Please hit 'F5' key to see the current status.

□ When failed to setup network (If message, 'Set up complete', does not appear in 1 minutes)

- ADSL Users: You may have failed to login. Please check ID and password. Please reset the ADSL modem and try again.
- Cable modem & Leased Line – Dynamic IP: Please reset the cable modem and make sure all the lines are correctly connected.
- Leased Line-Static IP: Please check if you have inserted network information such as IP address, gateway, etc. correctly.

Elesign Gateway User Set Up

- ☐ Select 'User Setup' from the main screen.



- ☐ Please input necessary information
 - Please contact your service company for the necessary information
 - Input E.164ID
 - Input Password if necessary
 - Input H.323ID
 - Input Gatekeeper address
 - Input Gateway address if necessary, otherwise leave it blank.
- ☐ Click on 'OK' button
- ☐ When you see a message 'Now Registering' for 'H323 Setting Result', hit 'F5' key

- When you see a message 'Successfully Registered' for 'H.323 Status', then H.323 set up is successfully done.

NOTE: If you a message 'Now registering' in 'H.323 Status', the set up is now in progress. Please wait a moment and hit 'F5' key to current status.

Make a call using Elesign Gateway



1. VoIP Call

Dial Number → Press '#'('Send') button

2. PSTN call

- Use 'Flash' button to convert to PSTN mode.
- If there is no 'Flash' button on your telephone, use 'hook' to convert to PSTN mode.

Software Upgrade

1. Connect LAN cable between PC and PC port of Elesign gateway.

☐ DO NOT CONNECT ADAPTER AT THIS MOMENT.

2. Select Update program File and Execute.

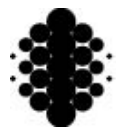
3. When 'Open' file popup window appears, select '*.bin' file.

4. When a message, 'Searching for product', appears, connect adapter to the Elesign gateway

5. When ELESIGN GATEWAY is found, it will start updating automatically.

Update program and binary for update can be obtained thru your service company.





ELESign

www.ELESign.com



ELESign