



**Character Generator**

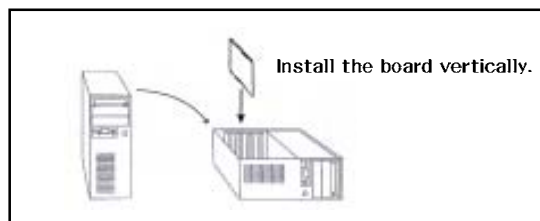
*Reference*

digital**fusion** Inc.

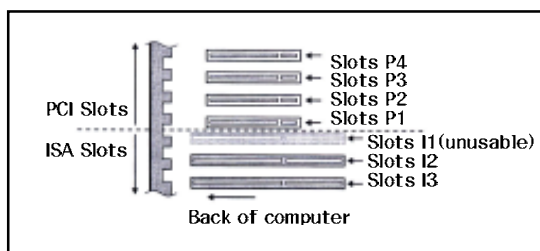
### < Hardware Board Install >

#### 1. Installing EzGFB 100 Board

► Turn off the power of the system, remove the power cable completely from the main body, detach the system outer cover as shown in the following figure, and then



► Install EzGFB100 board to the main board PCI slots in good order as shown in the figure below, and then connect the video cable.

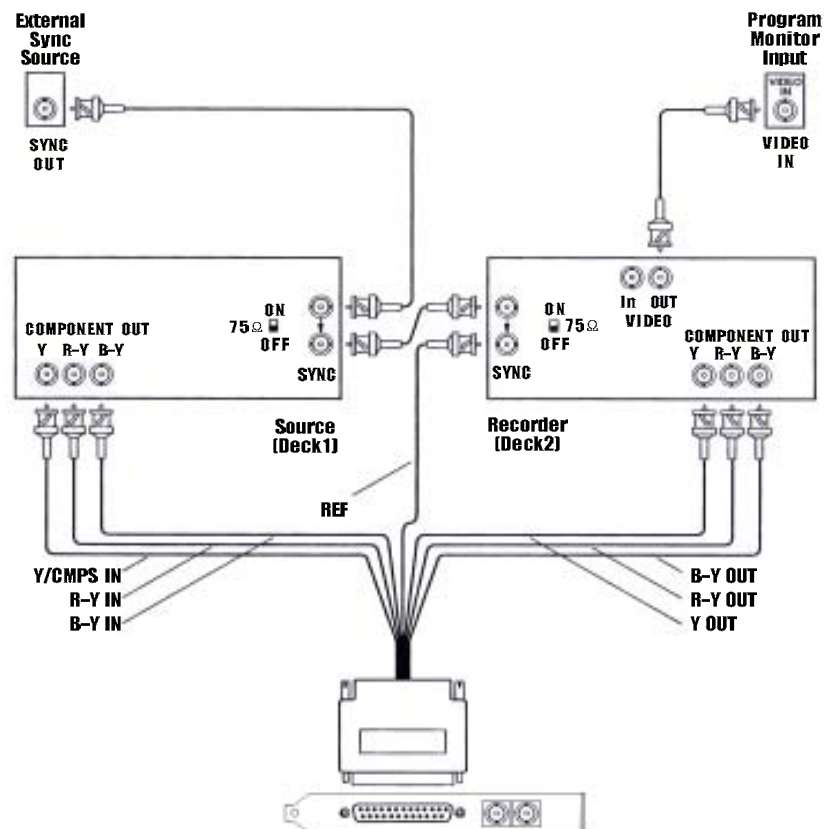


## H/W Board Install

### 2. Connecting video cable

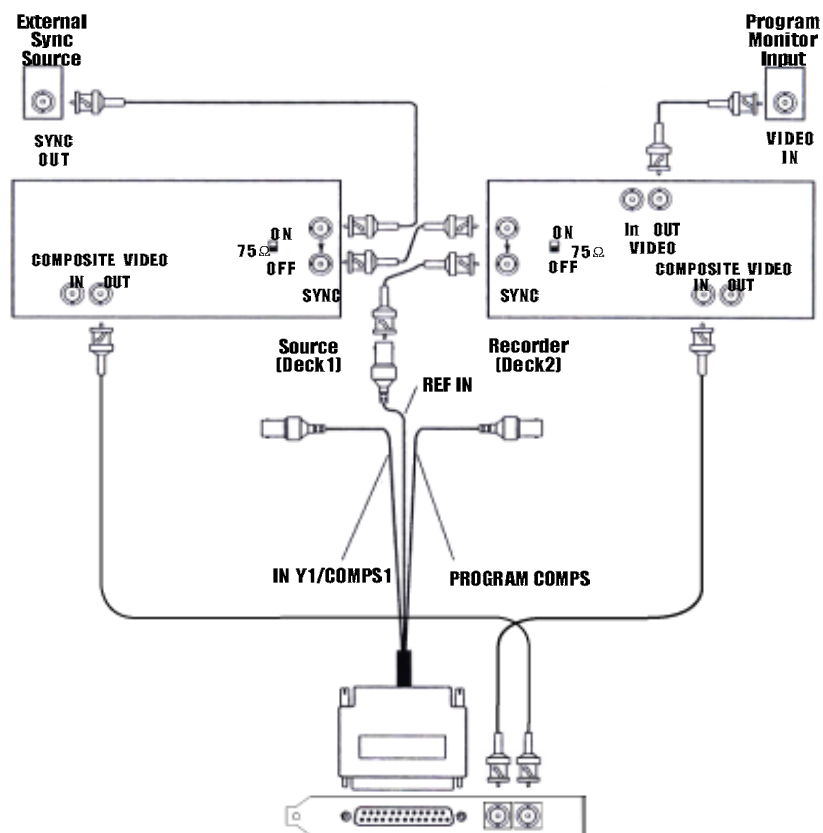
► The figures below describe the video signal in & output. They are the analog components, composite, and S-video connections respectively.

– Analog component connections with EzGFB100 CBL



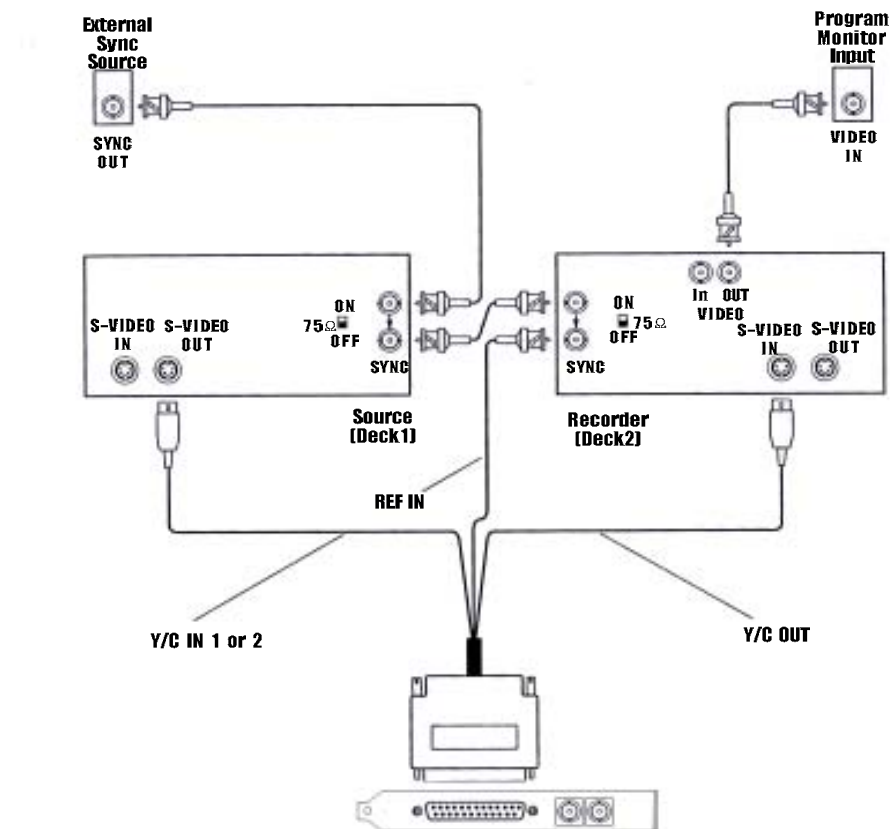
## H/W Board Install

- Composite connections with EzGFB100 CBL



## H/W Board Install

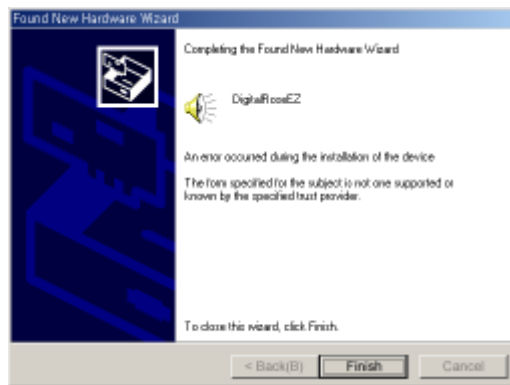
– S-video connections with EzGFB100 CBL



If you have completed the signal in & output connection process to meet the operation environment, connect the power cable to the system, and then, turn on the start switch.

If you log in to the system, "System driver upgrade wizard" is displayed as in the following figure.

To search for the EzGFB100 board driver, click the [Cancel] button, and follow the steps below.



## S/W Install

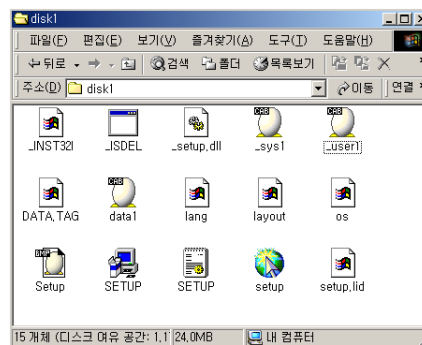
### <Software installation>

Software programs must be installed in the order of “DigitalRose Ez” character generator software, and then the driving “Video Board (EzGFB100)” software as in the following procedure.

- Installing “DigitalRose Ez” character generator software

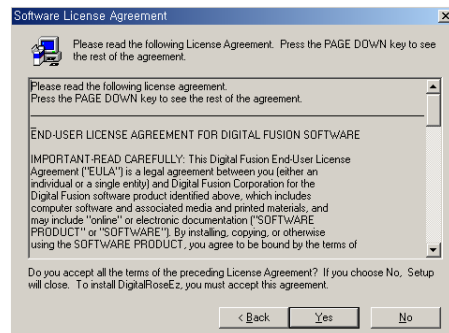
1. Insert the Install CD for “DigitalRose Ez” in the CD-ROM driver. The Setup program runs automatically.

If the Setup program does not run automatically, select the CD-ROM drive, and then, double-click \\Disk1: \\Setup.exe.

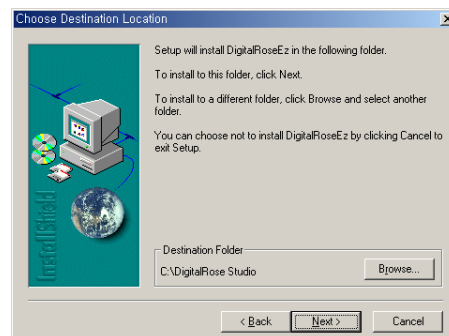


2. A dialog box will appear, asking if you agree to the terms & conditions of the program license. Click [Yes].

2. A dialog box will appear, asking if you agree to the terms & conditions of the program license. Click [Yes].



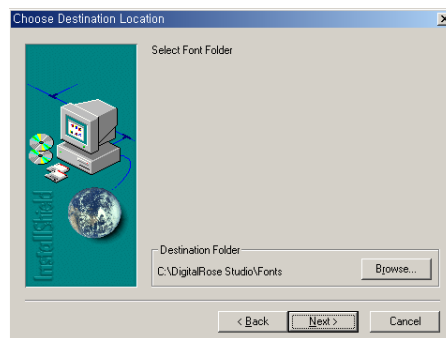
3. In the program folder route setup window, designate the route, and then click [Next].



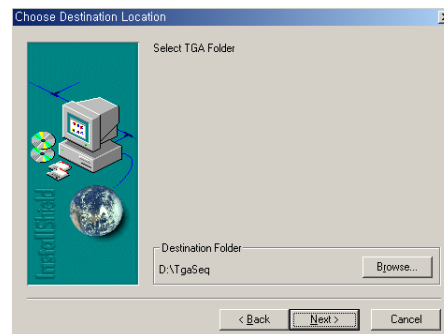


## S/W Install

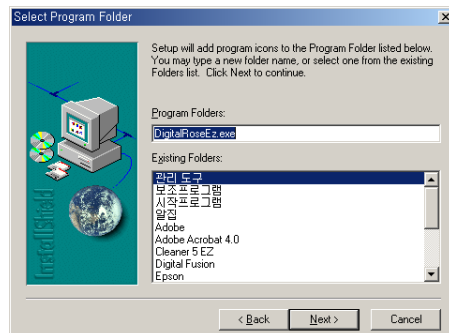
4. In the font folder route setup window, designate the route, and then click [Next].  
(Presetting is 'C : \WINNT \ \ FONTS' )



5. In the TgaSequence folder route setup window, designate the route, and then click [Next].



6. If a window appears, asking you to designate the folder for the icon and the exe file, designate the folder, and then click [Next].



7. A window is displayed, asking if you want to reboot the system. If you select <Yes, I want to restart my computer now>, the system starts rebooting, and DigitalRoseEz character generator program installation is completed.

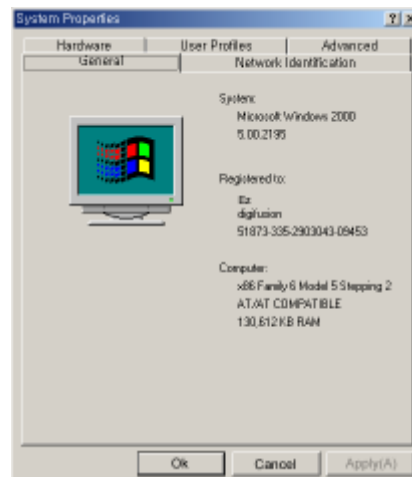
## Ez Board Install

You can install the device driver for Video Board (EzGFB100) in the following process.

If you reboot the system after installing the “DigitalRose Ez” character generator program, the OS (Windows2000) detects the new hardware, and asks you if you want to add the hardware to the hardware list.

Click [Cancel] and install the driver as in the following procedure.

1. Select “My Computer” and then click the [Hardware] tab from the System Properties.

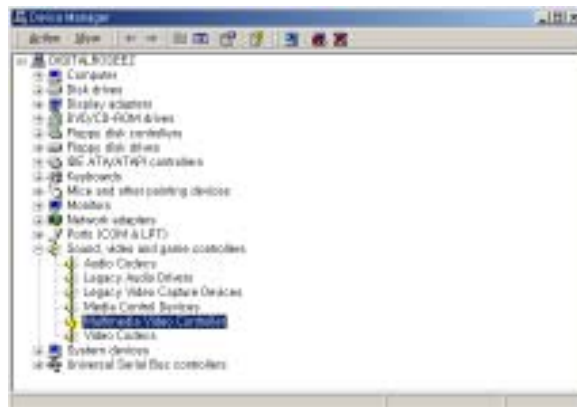


---

## Ez Board Install

---

2. Select [Device Manager] in the [Hardware] tab. Verify that “Multimedia Video Controller” is newly registered on the list. Select “Multimedia Video Controller” and then, Properties.



## Ez Board Install

3. As shown in the following figure, select [Reinstall driver] in the “Video Controller Properties” window, and install the appropriate driver.



4. If you start installation, the “Device Driver Upgrade Wizard” is displayed.



5. To install a specific driver, select the driver as in the following figure.



6. Select a hardware device from the list.



## Ez Board Install

7. To select the appropriate driver, click “from Disk” button, and select “DigitalRose Ez”



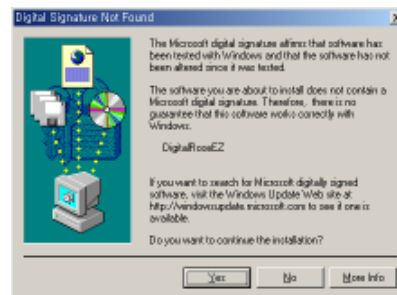
7-1. Select C:/ DigitalRose Studio/env/driver/ DigitalRose Ez.inf” and click [Open].



7. Install the device driver.



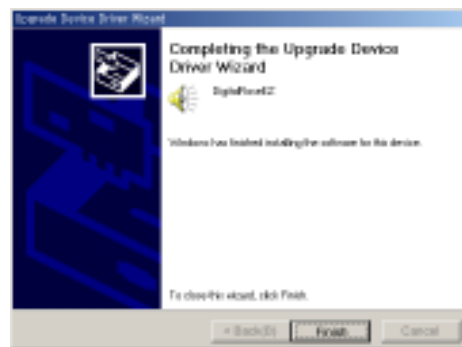
8. Check the digital signature.





## Ez Board Install

9. End the digital driver upgrade wizard.



10. When completed installation of the driver, reboot the system, and verify that “DigitalRose Ez” is included in the list of the system manager.



This device complies with Part 15 of the FCC Rules.  
Operation is subject to the following two conditions:  
(1) this device may not cause harmful interference, and  
(2) this device must accept any interference received, including  
interference that may cause undesired operation.

# DigitalRose Ez

[www.digitalrose.com](http://www.digitalrose.com)

---

digitalfusion Inc.

137-070, ahrnwha BD 1F, 1550-1, Seocho-dong, seocho-gu, Seoul

TEL: 02.3474.5242 FAX: 02.3474.5244

E-mail: [buy@digitalrose.com](mailto:buy@digitalrose.com)