

## FCC NOTICE

THIS DEVICE COMPLIES WITH PART 15 OF THE FCC RULES.  
OPERATION IS SUBJECT TO THE FOLLOWING TWO CONDITION:  
(1) THIS DEVICE MAY NOT CAUSE HARMFUL INTERFERENCE, AND  
(2) THIS DEVICE MUST ACCEPT ANY INTERFERENCE RECEIVED,  
INCLUDING INTERFERENCE THAT MAY CAUSE UNDERSIRED  
OPERATION.

This equipment has been tested and found to comply with the limits for a Class B digital device, pursuant to part 15 of the FCC Rules. These limits are designed to provide reasonable protection against harmful interference in a residential installation. This equipment generates, uses and can radiate radio frequency energy and, if not installed and used in accordance with the instructions, may cause harmful interference to radio

communication. However, there is no guarantee that interference will not occur in a particular installation. If this equipment does cause harmful interference to radio or television reception, which can be determined by turning the equipment off and on, the user is encouraged to try to correct the interference by one or more of the following measures :

- Reorient or relocate the receiving antenna.
- Increase the separation between the equipment and receiver.
- Connect the equipment into an outlet on a circuit different from that to which the receiver is connected.
- Consult the dealer or an experienced radio/TV technician for help.

NOTE : The manufacturer is not responsible for any radio or TV interference caused by unauthorized modifications to this equipment. Such modifications could void the user's authority to operate the equipment.

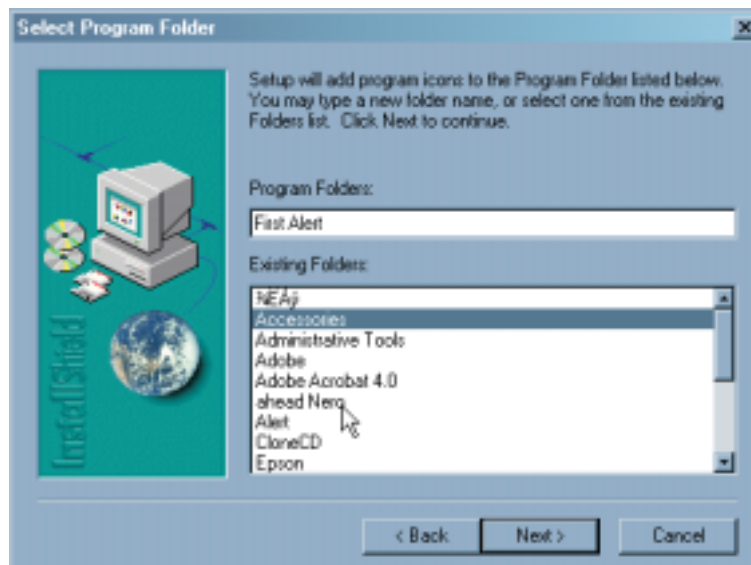
- 
3. At this screen, the program will ask you where you would like to install the program.  
If everything is ok then click on NEXT.



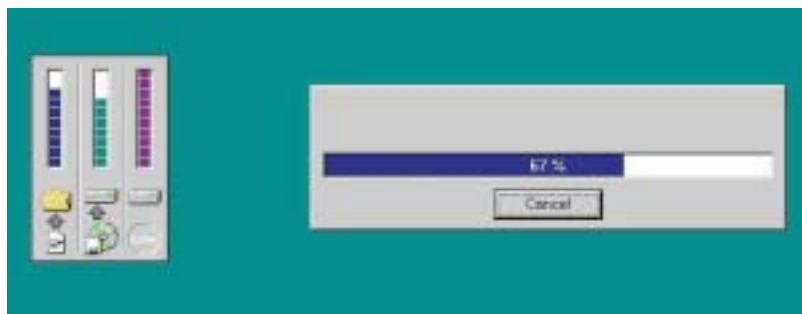
4. Click the type of Setup you prefer, then click Next. Typical installation is recommended.



- 
5. At this screen, it will ask you what program group you would like this program to be in. Click next to leave it at the default.

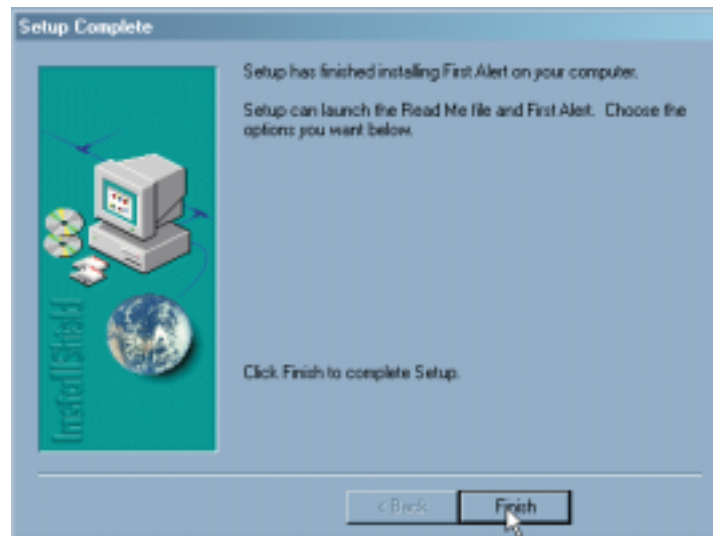


6. This screen is showing you the file copying process.

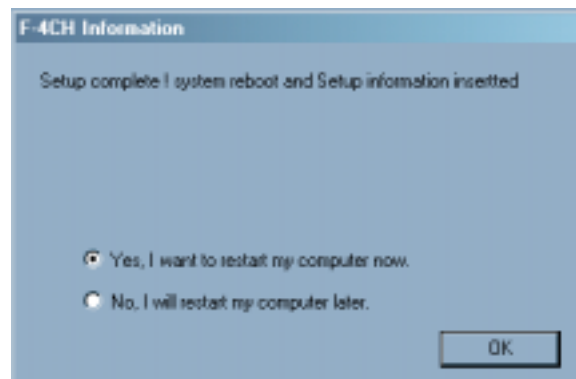


---

7. This screen is the end of the setup process. Click on the finish button.

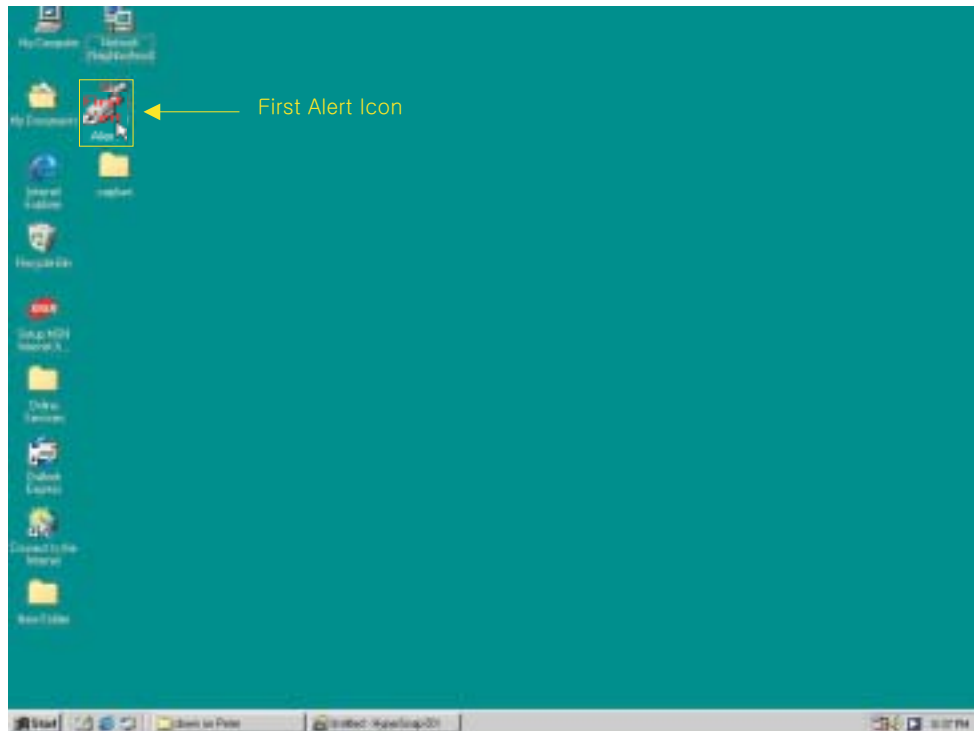


8. After the installation is completed, it will ask you to restart your computer. Select the option to restart and then click on ok.



## 2-2-4 Screen Desktop Icon

User can find the First Alert Icon on screen desktop. Double click on this icon to start the program.



**IMPORTANT:** YOU MUST RUN "CREATE STORAGE MEDIA"  
AS SOON AS YOU RUN THE PROGRAM FOR THE FIRST TIME.  
PLEASE REFER TO PAGE 33 and 34 FOR INSTRUCTIONS.

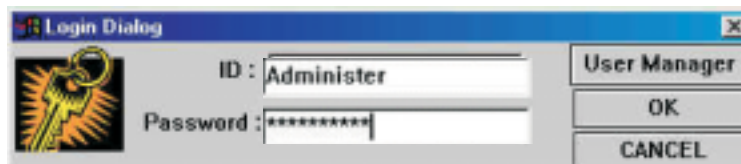
---

## 2-2-5 User Management

1. This is the login box when you start the program.



2. After inputting ID & Password, click OK, then the program will execute.



**ID : Administer**

**PASSWORD : Admin**

(Notice : in case of ID & Password, please pay attention to caps. )

3. If user wants to have the password option disabled when starting the program or accessing the setup Screen, then under the general tab in the options menu, click on the box that says password to disable.

---

## **3.1 Main Functions and Features**

This section contains the explanation of how to use the software.

### **3-1-1 Operating System(O/S)**

DVR-800 uses Windows 98(SE, ME)and 2000 as a basic operating system and is designed to operate all needed functions of DVR-800.

### **3-1-2 MAIN PROGRAM**

The Main Program operates search, backup, recording, and every function to control the DVR-800 System.

1) Easy to search

4CH Multi searching available according to date, time ,and camera. User can execute instant, speedy, conditional, and magnified video image search.

2) Backup and Output function

User can print searched monitoring screen image and also provide backup (3.5 inch FDD) Function

3) QUAD, FRAME SWITCHER(AUTO SELECTOR) Function

4) Monitoring Screen Division --user can select the following screen division : 1, 4

5) MOTION DETECTION RECORDING FUNCTION

--You can set up Motion Area, and then record the image when motion is detected in the area.

6) PAN / TILT CONTROL FUNCTION BUILT-IN

PAN/TILT CONTROL & CAMERA ZOOM and FOCUS

function are built in the system, NO additional equipment is needed.

---

7) Image Communication Function transmit remote images via telephone line(PSTN) & LAN network, Internet, Web Browser accessible, 16 local site network management control possible.

8) LINE MONITORING -Image Signal Monitoring function.

9) SCHEDULE RESERVATION RECORDING FUNCTION

10) By using WEB Browser client program, multiple connections are possible to the server system ; 1( Server) : N (Multi Clients) available.

11) Via TCP/IP Communication in Server system, when motion has occurred, the alarm function will send an alarm to the pre-designated client or pop-up function.

12) On Client, when the users wants to speed up the communication rate, they can adjust the video image quality and increase the speed of transmission.

CIF (Normal transmission format) , QCIF( Abnormal transmission format)If user selects QCIF when receiving video data from server, the video image quality may be decreased from the original video quality, but on the other hand, the transmission speed will be increased.

---

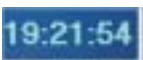








## 3.2 How to use the FDVR-800

### 3-2-1 MAIN SCREEN



This is the main screen of the DVR. This is where you view live images and control the cameras and PTZ.

\* The Purpose of Functional Key

日本語表示 画面	キー	機能
		Indicates current time
		Power
		Options and Setup
		Search
		Camera rotation
		4 screen split
		Single pane
		PTZ controller

### 3-2-1 option Screen

#### 1) General Setup

This section indicates camera input signal, recording video screen image, Communication, and PTZ camera setting, and etc.

Adjust the quality of recording image. Compression rate can adjust from 10 to 100%. Normally, 50 to 60% is recommended rate.

Can set up the color & character type of main screen.

This option disables or enables the user password.

According to the camera signal type, please select NTSC or PAL.

When using PAN/TILT, connect port

Connection type

Communication port

Transmission speed

Connected network  
<refer to next page>

Connected communication port

When using modem, select modem speed. Please refer to the next page.