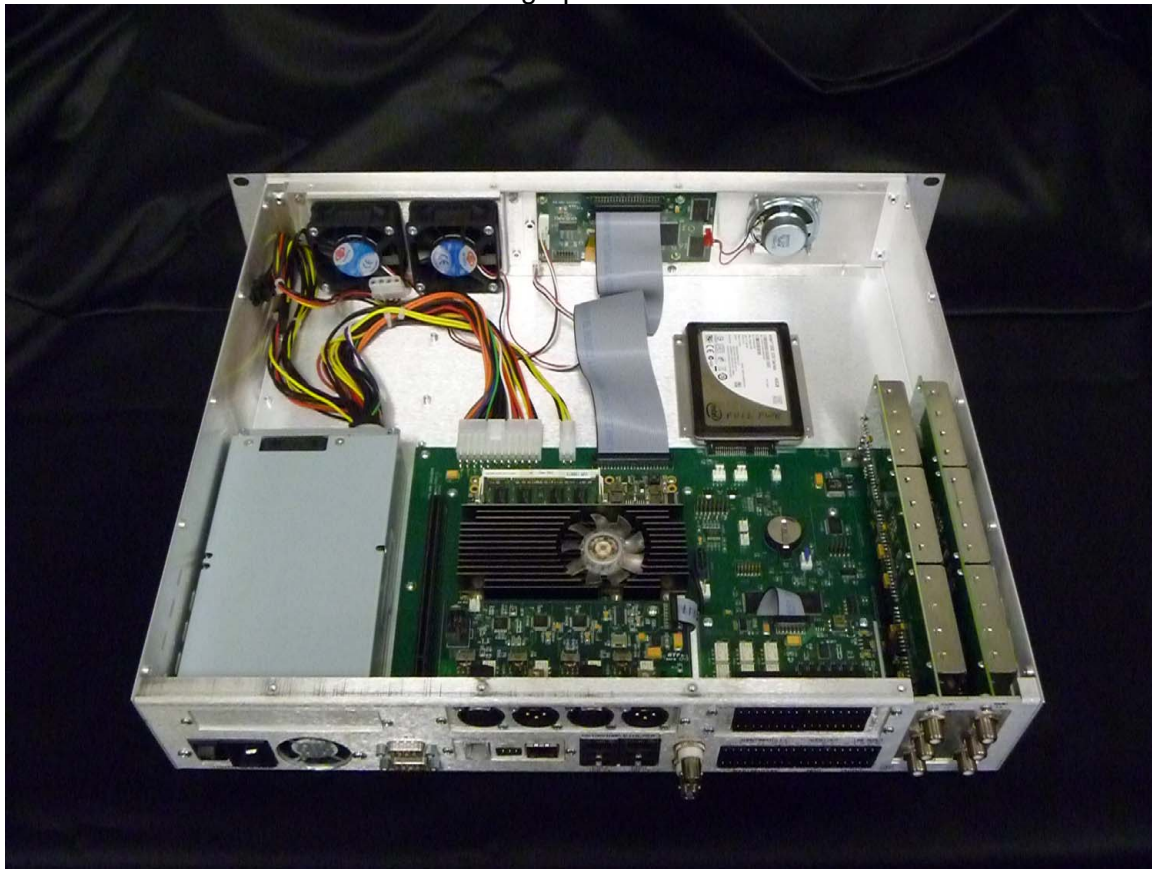


Internal EUT Photographs

Photographs of EUT cover removed

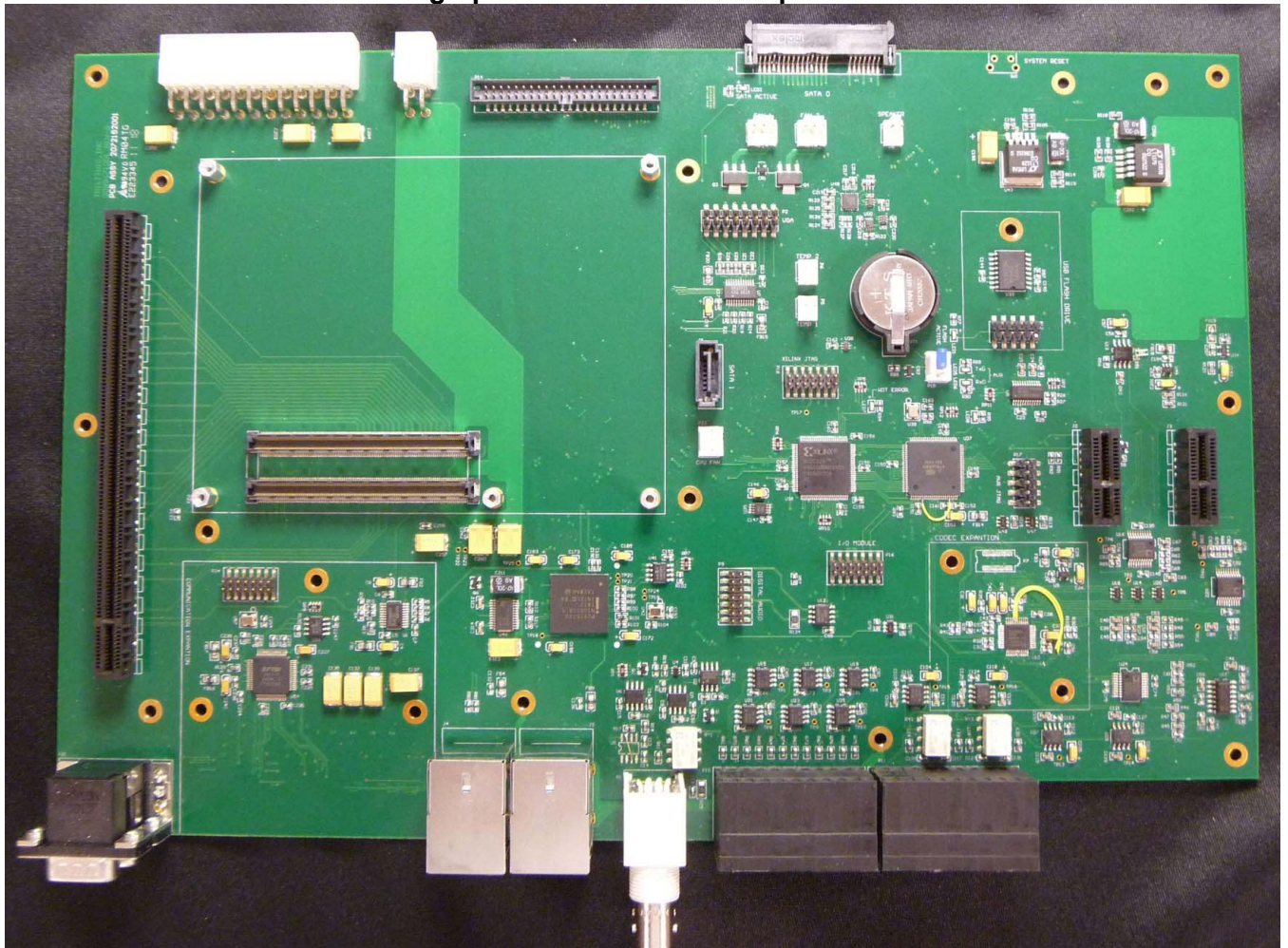


Rear View

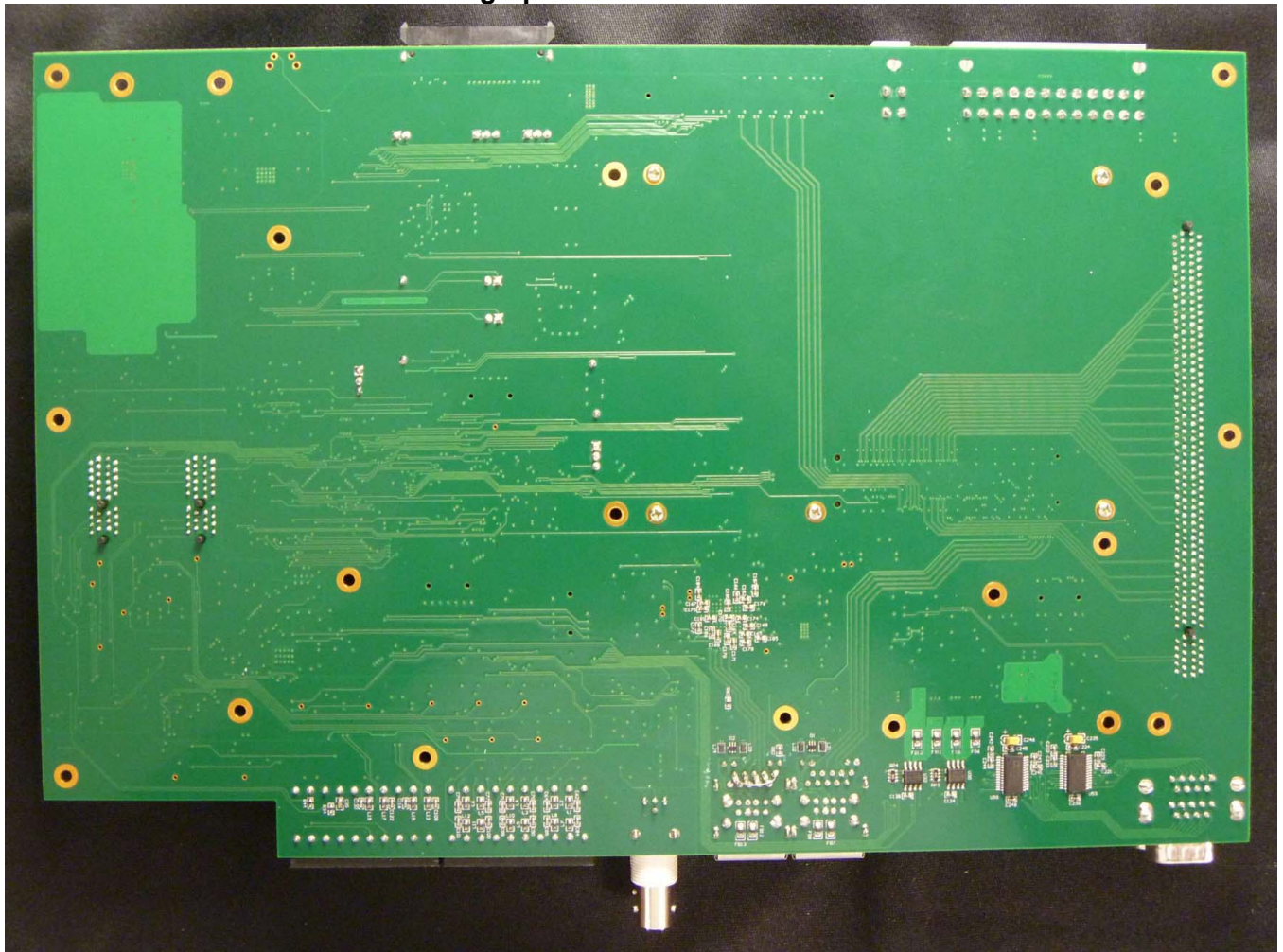


Front View

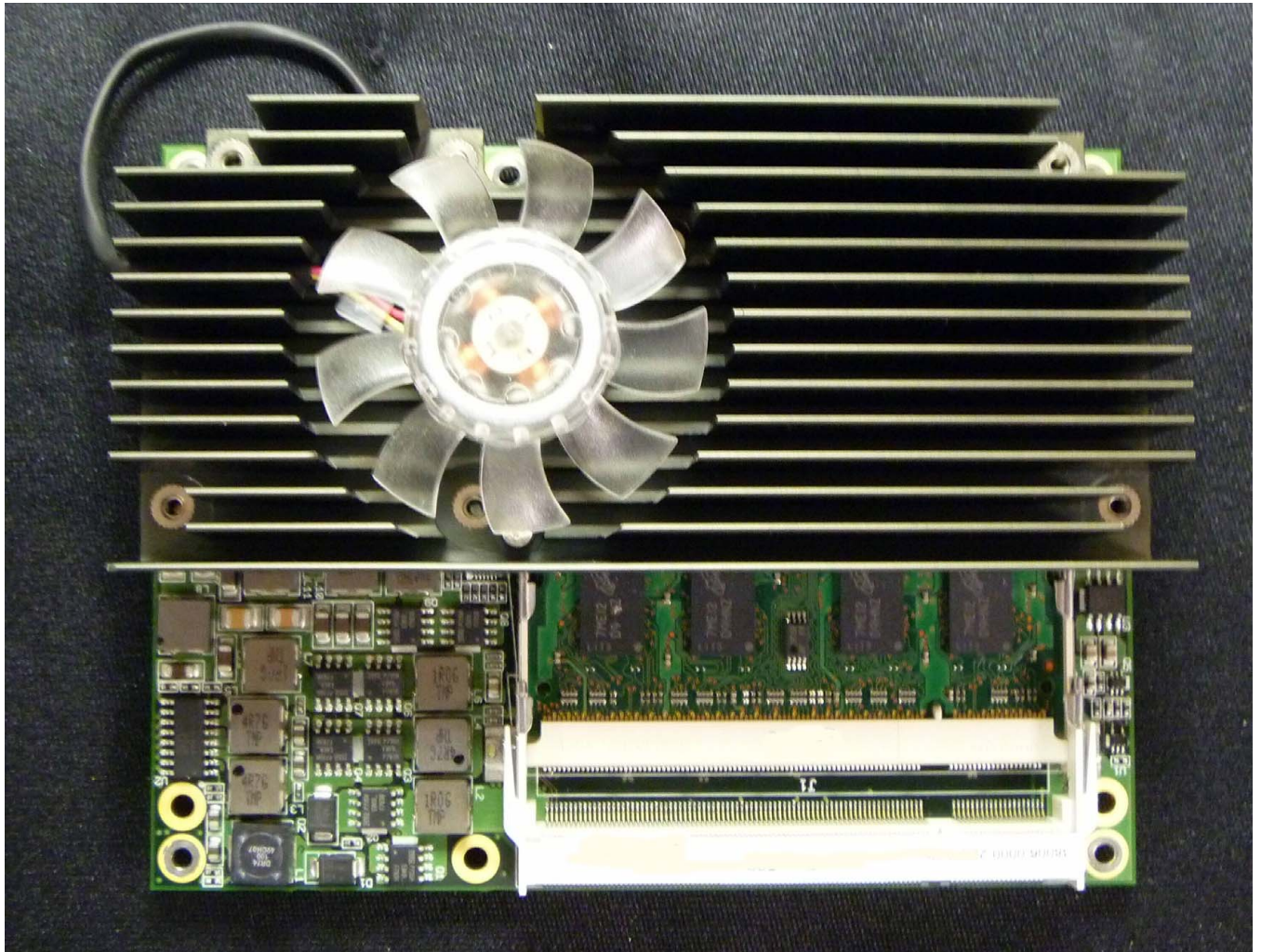
Photograph of Main Board: Component Side



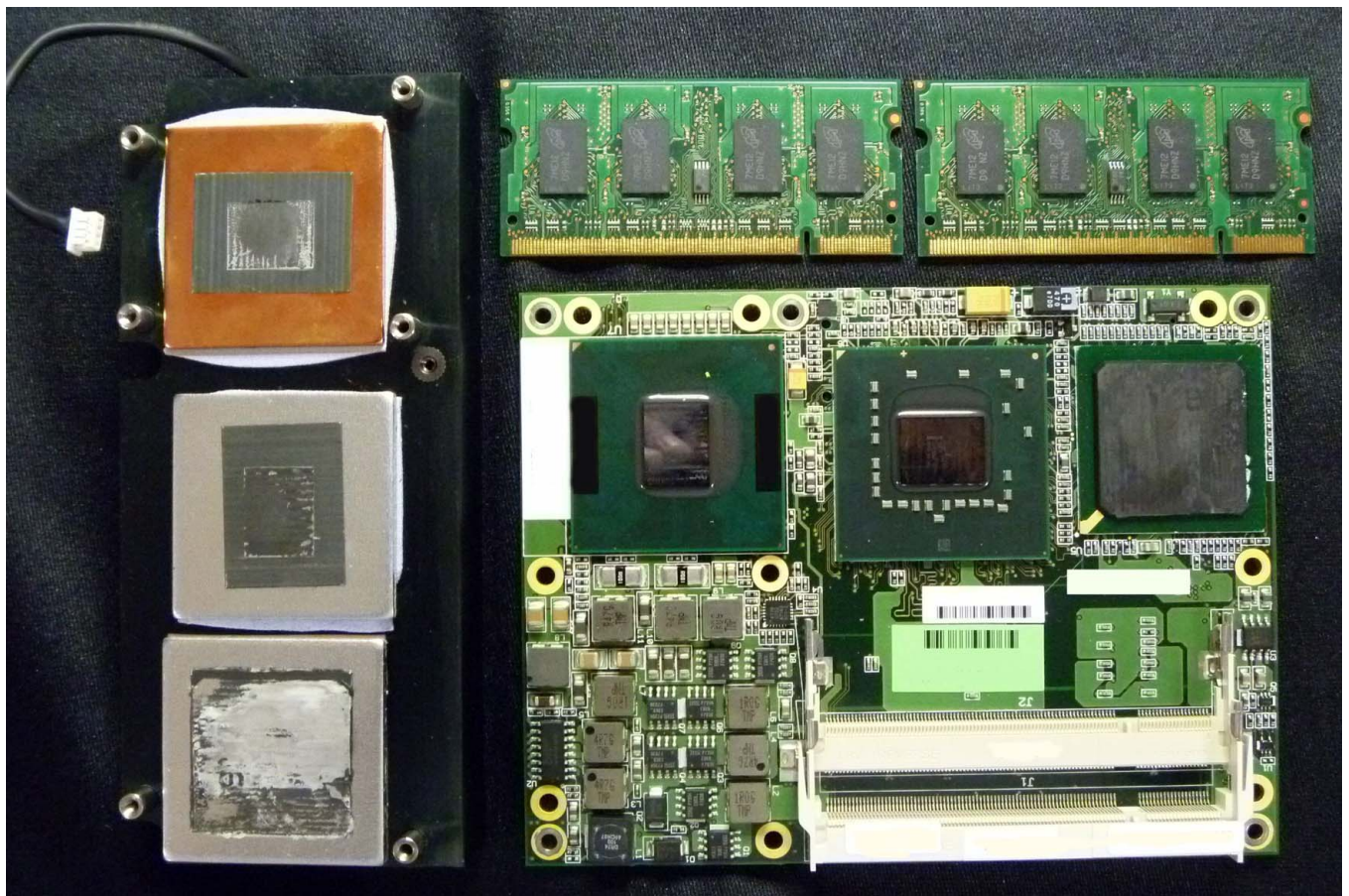
Photograph of Main Board: Foil Side



Photograph of CPU Board: Component Side

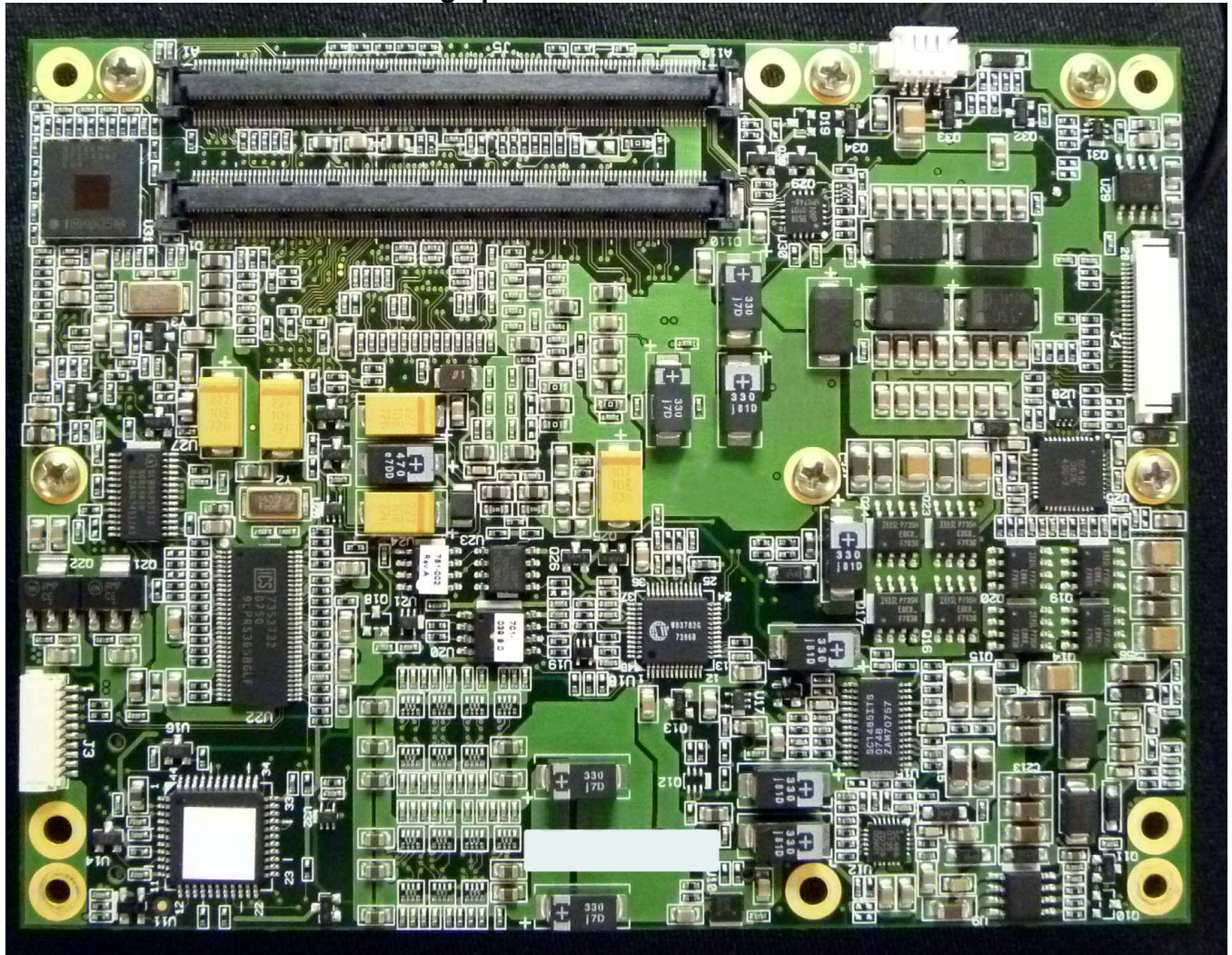


RAM & Heat Sink installed

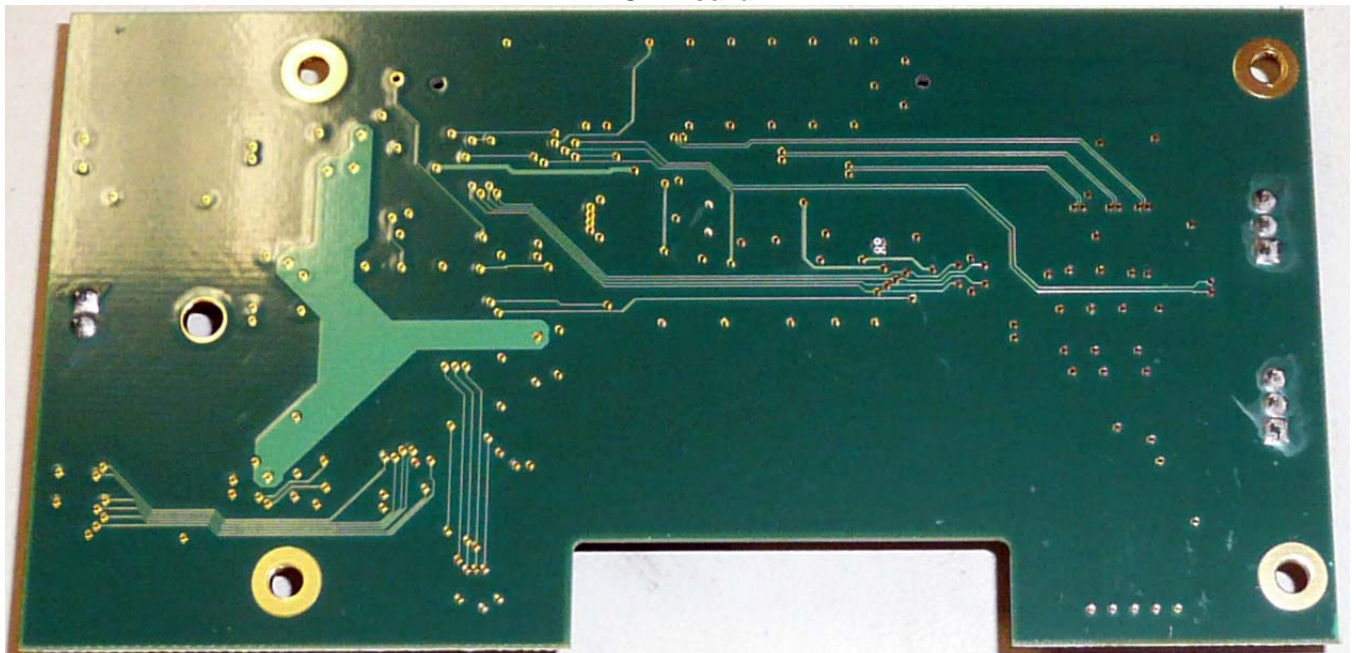


RAM & Heatsink removed

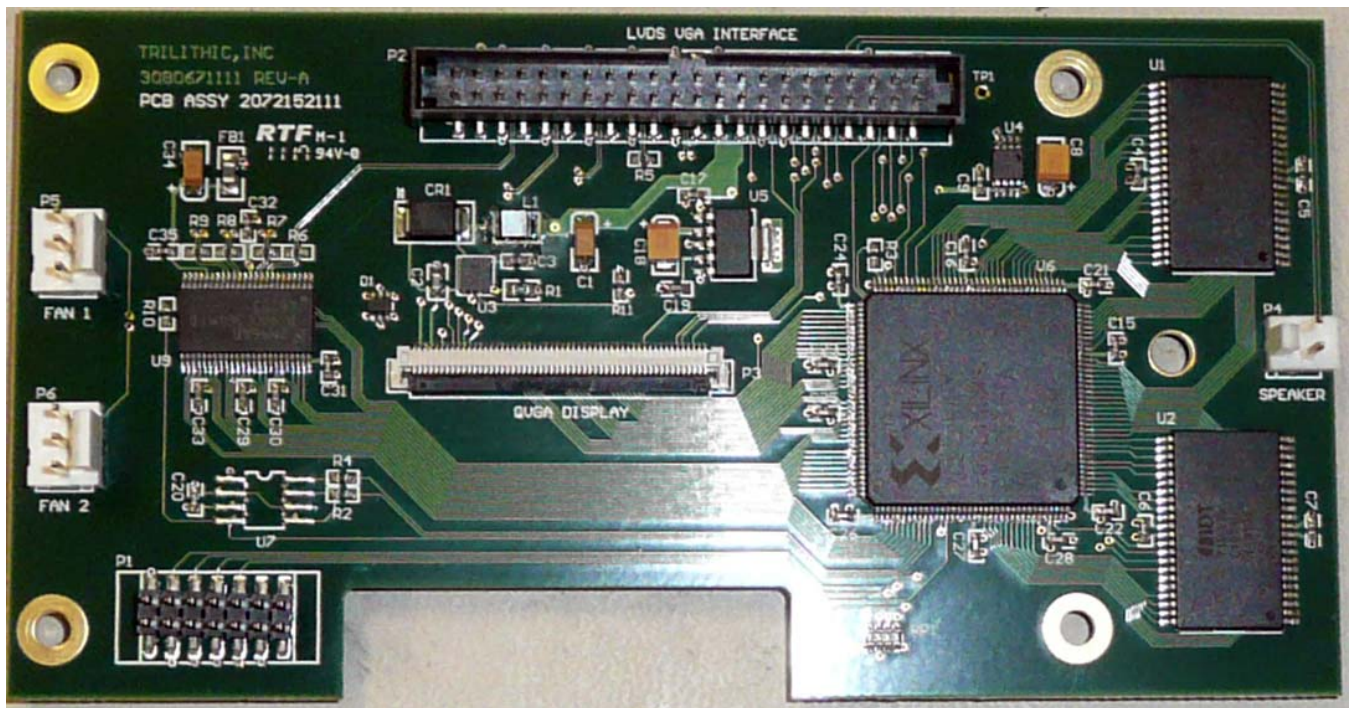
Photograph of CPU Board: Bottom Side



LCD Board

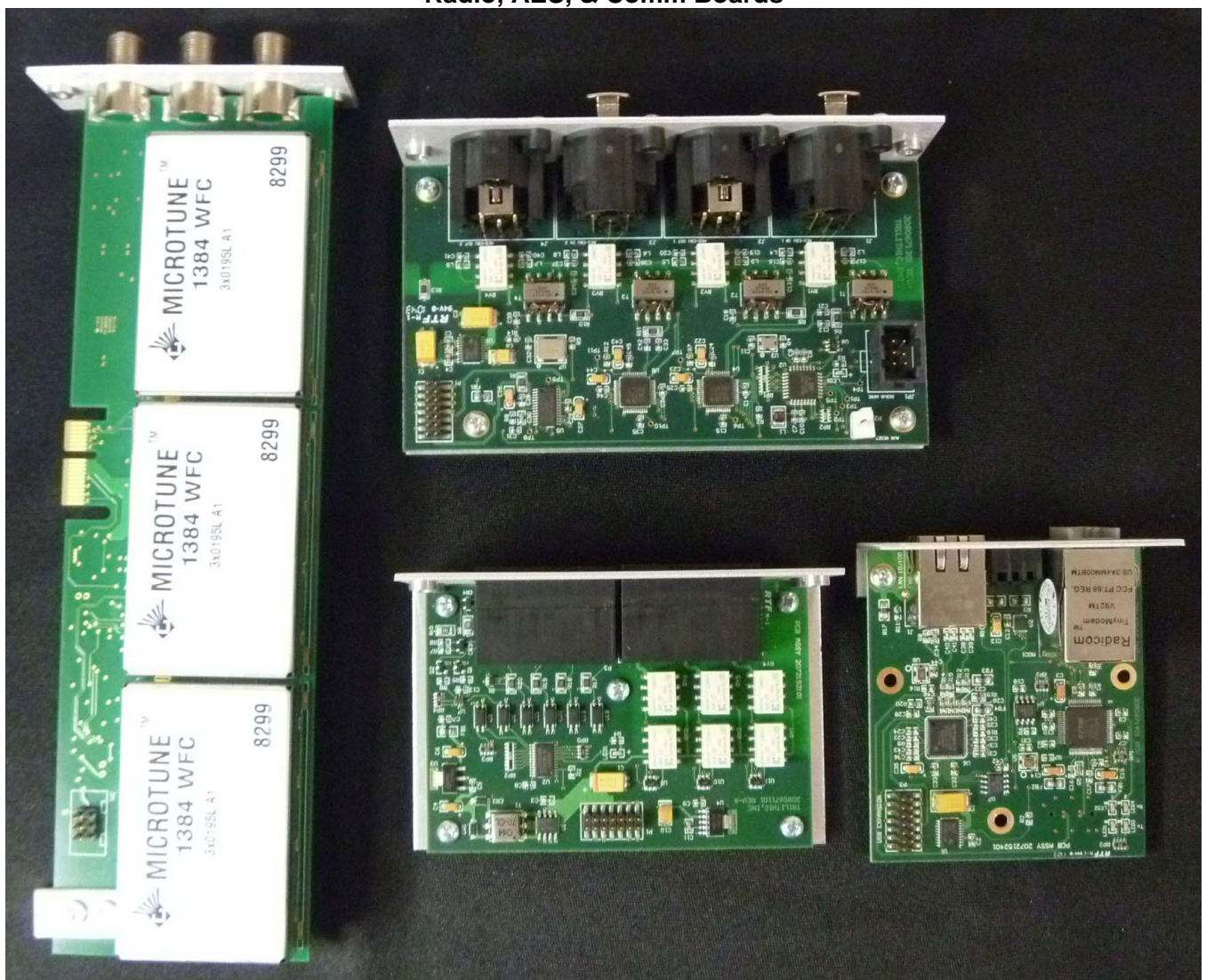


Foil Side

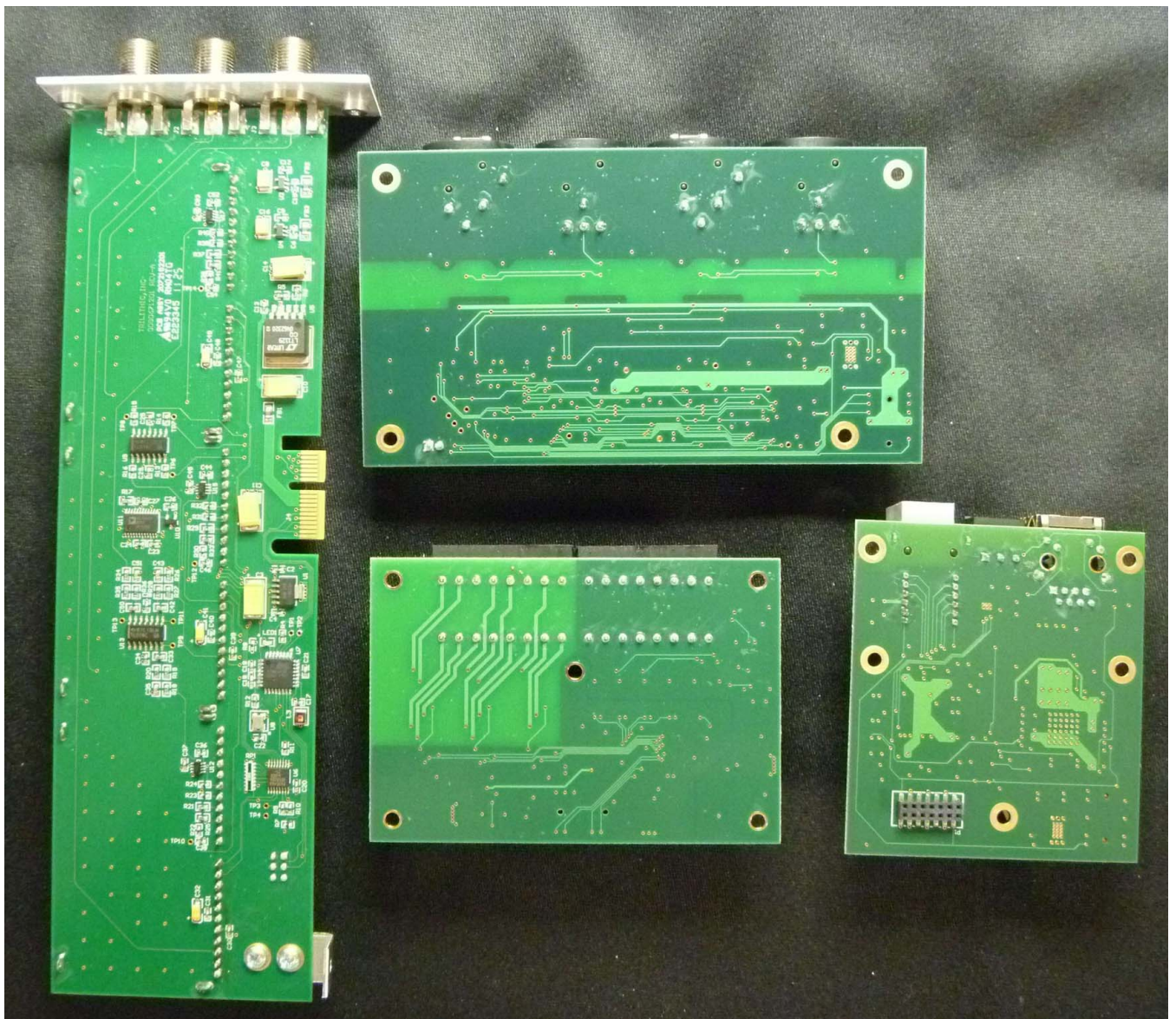


Component Side

Radio, AES, & Comm Boards



Component Sides



Foil Sides