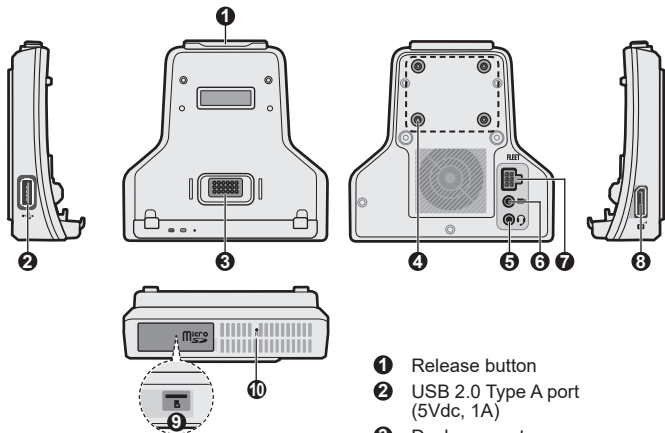


N738 User Manual

MioWORK Video CradleCradle

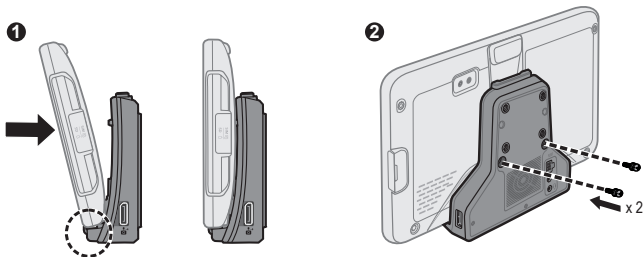


- ❶ Release button
- ❷ USB 2.0 Type A port (5Vdc, 1A)
- ❸ Dock connector
- ❹ AMPS hole pattern
- ❺ Headphone jack (Mic-In/Audio-Out to tablet)
- ❻ Headphone jack (Video-In for CVBS)
- ❼ FLEET port
- ❽ TVI connector (Max to 4-CH)
- ❾ Micro SD card slot
- ❿ Reset button

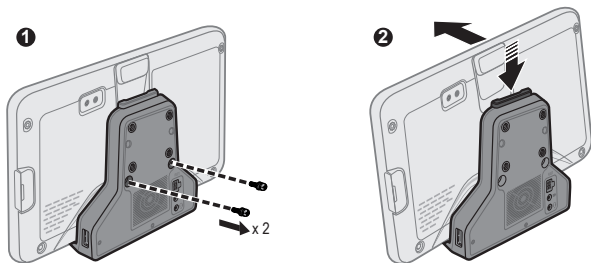
Using the cradle

Installing the tablet onto the cradle

Line up and connect the dock connector on the cradle to the dock connector on the device. Magnets are incorporated to ensure proper alignment. If needed, you can secure the device to the cradle with the included 2 screws.



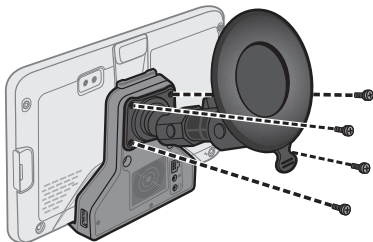
To remove the tablet from cradle, remove the 2 screws (if installed) securing the device to the cradle. While pressing and holding the release button on the cradle, pull the top of the device away and lift the device out of the cradle in an upward motion.



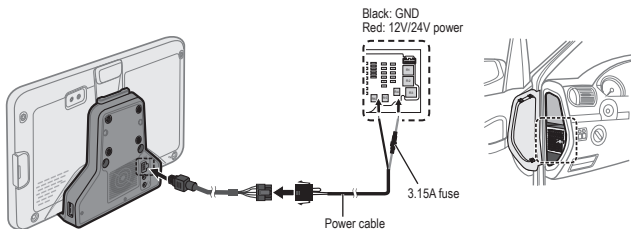
Installing the cradle in the vehicle

Attach the AMPS mount* to the cradle, and then install the cradle to the vehicle (e.g., on the windshield). Then, you can charge the device by connecting the cradle to the vehicle power source using the power cable*.

* Available separately.



Note: To avoid damaging the device and to prevent frequent fuse blowouts, ensure that the power cable has a 3.15A fuse (clearly marked on the fuse) when connecting the cradle to the vehicle's power source.



Additional features of the cradle

- Connecting headphones.
- Connecting an external USB device (such as an USB flash drive or printer).
- Connecting to the Ethernet via a USB-to-LAN adapter (available separately).

Regulatory information

For regulatory identification purposes, this product is assigned a model number of N738.

FCC



Federal Communication Commission Interference Statement

This device complies with Part 15 of the FCC Rules. Operation is subject to the following two conditions: (1) This device may not cause harmful interference, and (2) this device must accept any interference received, including interference that may cause undesired operation.

This equipment has been tested and found to comply with the limits for a Class B digital device, pursuant to Part 15 of the FCC Rules. These limits are designed to provide reasonable protection against harmful interference in a residential installation. This equipment generates, uses and can radiate radio frequency energy and, if not installed and used in accordance with the instructions, may cause harmful interference to radio communications. However, there is no guarantee that interference will not occur in a particular installation.

If this equipment does cause harmful interference to radio or television reception, which can be determined by turning the equipment off and on, the user is encouraged to try to correct the interference by one of the following measures:

- Reorient or relocate the receiving antenna.
- Increase the separation between the equipment and receiver.
- Connect the equipment into an outlet on a circuit different from that to which the receiver is connected.
- Consult the dealer or a radio/TV technician for help.

FCC Caution:

- Any changes or modifications not expressly approved by the party responsible for compliance could void the user's authority to operate this equipment.
- This transmitter must not be co-located or operating in conjunction with any other antenna or transmitter.

IC

- This device complies with Industry Canada license-exempt RSS standard(s). Operation is subject to the following two conditions:
 - This device may not cause interference.
 - This device must accept any interference, including interference that may cause undesired operation of the device.
- This Class B digital apparatus complies with Canadian ICES-003.
- This device complies with RSS-310 of Industry Canada. Operation is subject

to the condition that this device does not cause harmful interference.

- This device and its antenna(s) must not be co-located or operating in conjunction with any other antenna or transmitter, except tested built-in radios.
- The County Code Selection feature is disabled for products marketed in the US/ Canada.
- Le présent appareil est conforme aux CNR d'Industrie Canada applicables aux appareils radio exempts de licence. L'exploitation est autorisée aux deux conditions suivantes:
 - L'appareil ne doit pas produire de brouillage.
 - L'utilisateur de l'appareil doit accepter tout brouillage radioélectrique subi, même si le brouillage est susceptible d'en compromettre le fonctionnement.
- Cet appareil numérique de la classe B est conforme à la norme NMB-003 du Canada.
- Cet appareil est conforme à la norme RSS-310 d'Industrie Canada. L'opération est soumise à la condition que cet appareil ne provoque aucune interférence nuisible.
- Cet appareil et son antenne ne doivent pas être situés ou fonctionner en conjonction avec une autre antenne ou un autre émetteur, exception faites des radios intégrées qui ont été testées.
- La fonction de sélection de l'indicatif du pays est désactivée pour les produits commercialisés aux États-Unis et au Canada.

CE



Products with the CE marking comply with the Radio Equipment Directive (Directive 2014/53/EU) - issued by the Commission of the European Community.

Compliance with these directives implies conformity to the following European Standards:

- EN xxxxxxxx
- IEC xxxxxxxx

RCM



WEEE



This product must not be disposed of as normal household waste, in accordance with the EU directive for waste electrical and electronic equipment (WEEE – 2012/19/EU). Instead, it should be disposed of by returning it to the point of sale, or to a municipal recycling collection point.