

Looket PMP

*All-in-One
Music! Movie! Data! in my pocket!*



User Manual v.1.0
Looket PMP

Welcome

Note

Thank you for your purchasing the Looket PMP (P20 / P30 / P40).
Please carefully read this user guide instruction before using the product.

Online information and Product Registration

You can find more information about the player and register your unit in Looket website.
<http://www.looket.com>

The firmware upgrade news will be provided through registered e-mail address.
Your unique product serial number and model no. can be found on the back side of the product.

Information and instruction in the manual is subject to change without notice at any time.

Disclaimer and limitation of liability

Sysonchip, Inc. and its affiliated companies assume no responsibility for any damages and loss resulting from the use of this manual and also by deletion of data as a result of malfunction, dead battery, or misuse of the product in any way.

Neither the manufacturer, importers nor dealers is responsible for any accidental damage including bodily injury or any damage resulting from misuse or unsuitable operation by you

The information on this manual is prepared with the current player specification. The manufacturer is adding new features to the product and may persistently apply new technologies hereafter.

All standards may be changed at any time without notice.

Table of contents

Before Using 4

- Certifications & Copyrights
- Notice for safety
- Caution
- Unit package
- Designation
- Designation

Getting Started 11

- Turn on / Turn off
- Charging the battery
- Connecting AV out port
- Cable connection for recording
- USB cable connection

Operation 19

- Video player
- Audio player
- FM Radio
- Photo viewer
- File browser
- Recording
- Setup

Additional Information 49

Before Using

Certifications & Copyrights

- Certifications

CE, FCC, MIC

- Copyrights

- * The software, video and audio which have an intellectual property are protected by copyright and international laws. It is definitely each user's responsibility when he/she reproduce or distribute the contents created using Looket PMP.
- * SysOnChip has all the rights of the patent, literary property, and intellectual property related to this manual. You shall not reproduce any part of this manual unless authorized by SysOnChip. Using any part of this manual without any official permission from SysOnChip is strictly illegal.

Notice for safety

- If water or other liquids are present, power off the player and unplug the AC adapter.
- If smoke or smell emit from player or adapter, power off the player and unplug the AC adapter.
- Unplug adapter when it is not in use.
- When it is electrical storms, unplug the AC adapter. Electrical shock can result.
- Use only the supplied power adapter (AC) authorized by the manufacturer. Using with other power supply are strictly out of warranty with any reason.
- Do not overload a single power circuit because of overheating or fire.
- Firmly unplug the adapter into the wall socket.
- Do not place heavy objects on the power cable. Do not twist power cable.
- Do not touch power adapter with wet hand because of electrical shock.
- Do not use or leave this Looket PMP near a stove or fire.
- Do not look at the LCD light directly at a close distance.
- Keep out of the reach of children.
- Do not use while walking or driving, which may cause any injury or accidents.
- Do not attempt to disassemble or modify this Looket PMP, AC adapter, and any accessories included.
- LCD may be temporarily discolored at the very low or too high temperature.



- ⦿ Never connect or disconnect the power plug with wet hand.
- ⦿ Do not leave Looket PMP in places of high temperature, such as in a sun-heated car.
- ⦿ Do not damage the AC adapter cord by pulling it and do not attempt to extend it.
- ⦿ Do not drop or put pressure or strong impact on Looket PMP.
- ⦿ Keep this Looket away from magnetic objects (credit cards, floppy disk, etc.).
- ⦿ Do not take a picture or leave Looket PMP with the lens aimed directly at the sun.
- ⦿ If the Looket is subjected to a sudden temperature change, for example by bringing it from a cold place into a warm room, condensation may form on the inside. Use the device after the temperature difference has subsided.
- ⦿ Use only the supplied Li-ion battery authorized by the manufacturer. Using with other battery may cause severe problems, accidents or critical damages on Looket PMP, which will be strictly out of warranty.

Unit package

Locket PMP

Data CD

AV Cable

USB Host Cable

USB Slave Cable

Earphones

AC Adapter (110 ~ 240V)

Quick Manual

Lithium-ion Battery 2EA

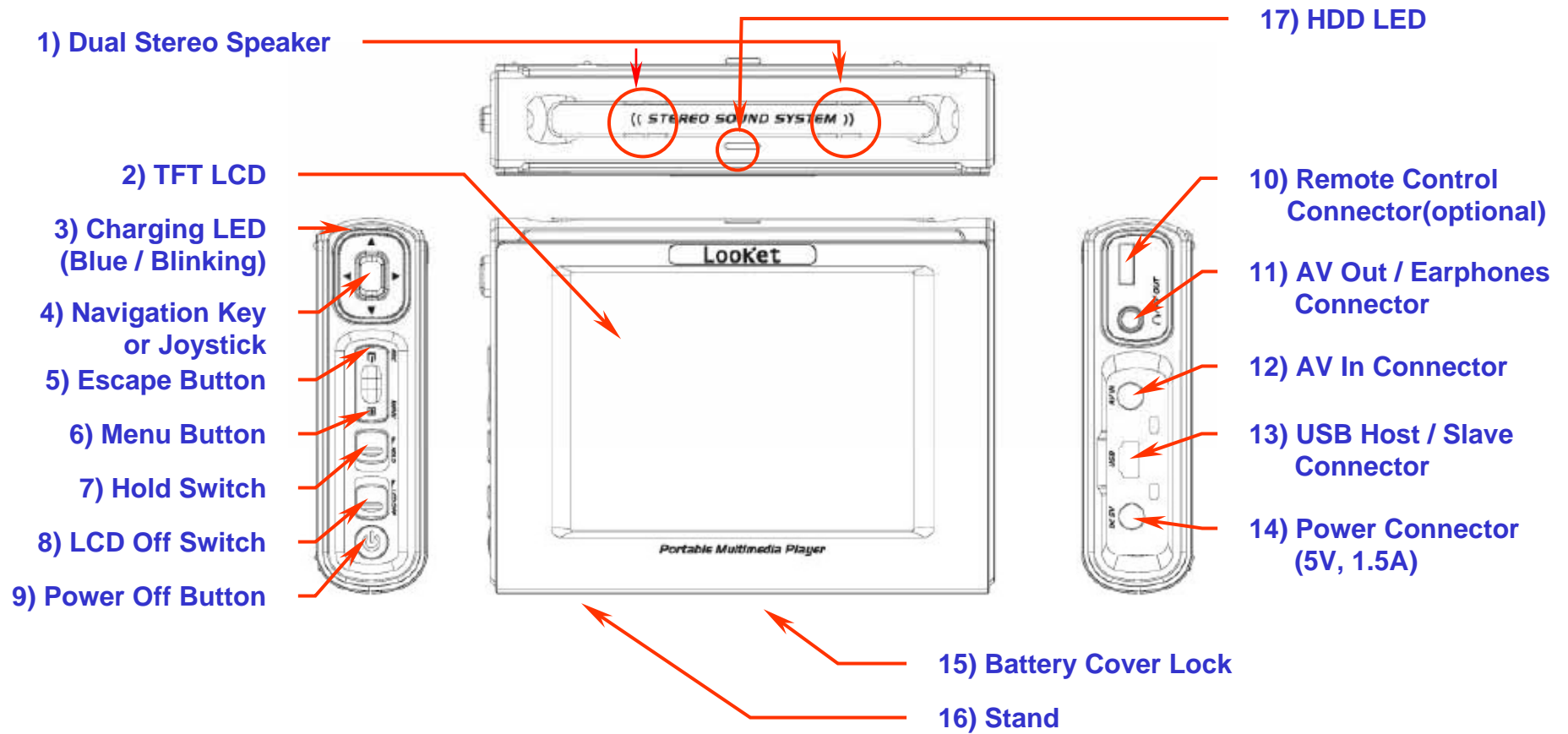
RCA Adapter (optional)

Carrying Case (optional)

Remote Controller (optional)

*** Package contents might vary depending on countries without notice.**

Designation



Designation

- 1) Dual Stereo Speaker: Built-in stereo sound speaker
- 2) TFT LCD : 16.7 Million color display & QVGA LCD
- 3) Charging LED : Blinking - during charging / Blue light on - after full charging
- 4) Navigation Key : 5 Directional switch. Up, Down, Left, Right, Enter
- 5) Escape Button : Return to previous menu or escape the current mode.
- 6) Menu Button : Popup setup menu
- 7) Hold Button : Navigation key, menu, and ESC button are freezed. Only power button is operated.
- 8) LCD Off Button : LCD On/Off Selection
- 9) Power On/Off Button : Press and hold it for 2 sec.
- 10) Remote Control Connector : Connector for an optional remote controller/FM transmitter
- 11) AV Out / Earphone Connector : Connector for other AV products like a television, a projector, or earphones.
- 12) AV In Connector : Connector for other AV products like a television, digital camcorder, VTR or DVD for recording.
- 13) USB Host / Slave connector : Host function – Connect with other USB products(Memory, Digital camera, etc)
Slave function – Connect with PC for data copy
- 14) Power connector
- 15) Battery cover Lock
- 16) Stand
- 17) HDD LED

Getting Started

- Turn on / Turn off
- Charging the battery
- Connecting AV out port
- Cable connection for recording
- USB cable connection
(Slave connection & Host connection)
- Disconnecting USB connection

Turn on / Turn off

- 1) Press the POWER button of the left side for 2-sec. You will see the light of HDD LED on top cover
- 2) If LCD off switch is selected, the warning message will appear in LCD as below for short moment.



Press the power
button for 2 seconds



Charging the battery

Before using Looket PMP, the battery must be fully charged.

- Open the battery cover.
- Put Lithium-ion battery in Looket PMP.
- Close the battery cover. And lock the battery cover switch.
- Connect Looket PMP with AC adapter, and then plug the adapter into the wall socket.
- The charging blue LED will be blinking during charging, and turn on once it is fully charged.
- To start Looket PMP, press and hold the POWER button for 2 sec.

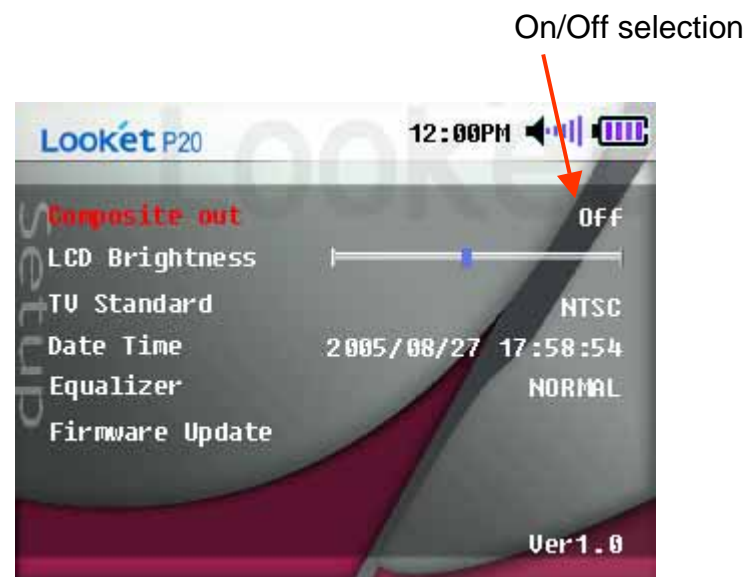
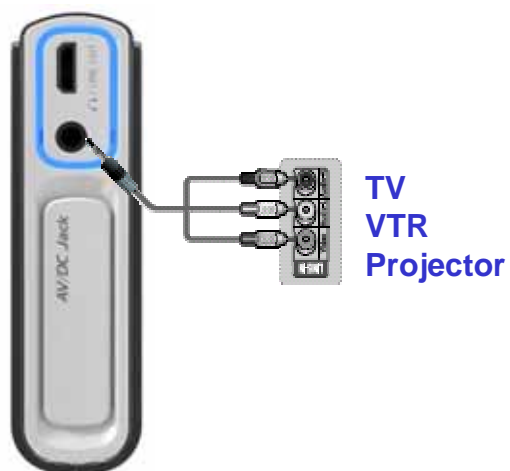
※ Low battery display



Connecting AV out port

Looket PMP can be usable with other electronic products like TV, VTR, Beam Projector, etc.

- 1) Connect the AV out connector of Looket PMP with the AV cable included in the package. The AV cable consists of phone jack and RCA jack.
- 2) Enter SETUP menu, and change 'Composite Out' to 'ON'.

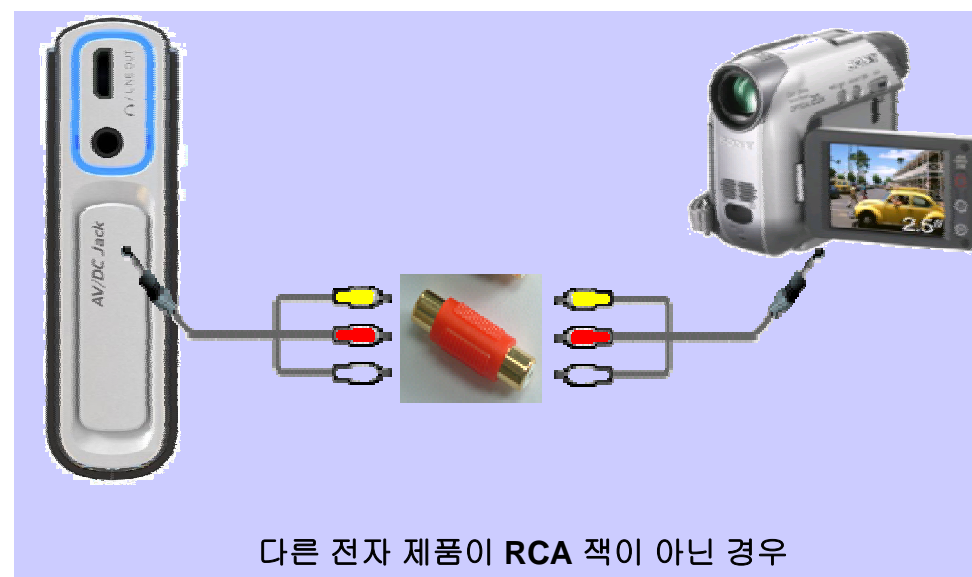


Cable connection for recording

※ Looket can be input signal of other AV products

- Open the AC/DC jack cover and insert the phone jack of the AV cable into the AV IN connector.
- Connect the RCA jack of AV Cable to the cable of other AV product like the picture 1.

In case other AV product has different connector type, see right bottom picture.

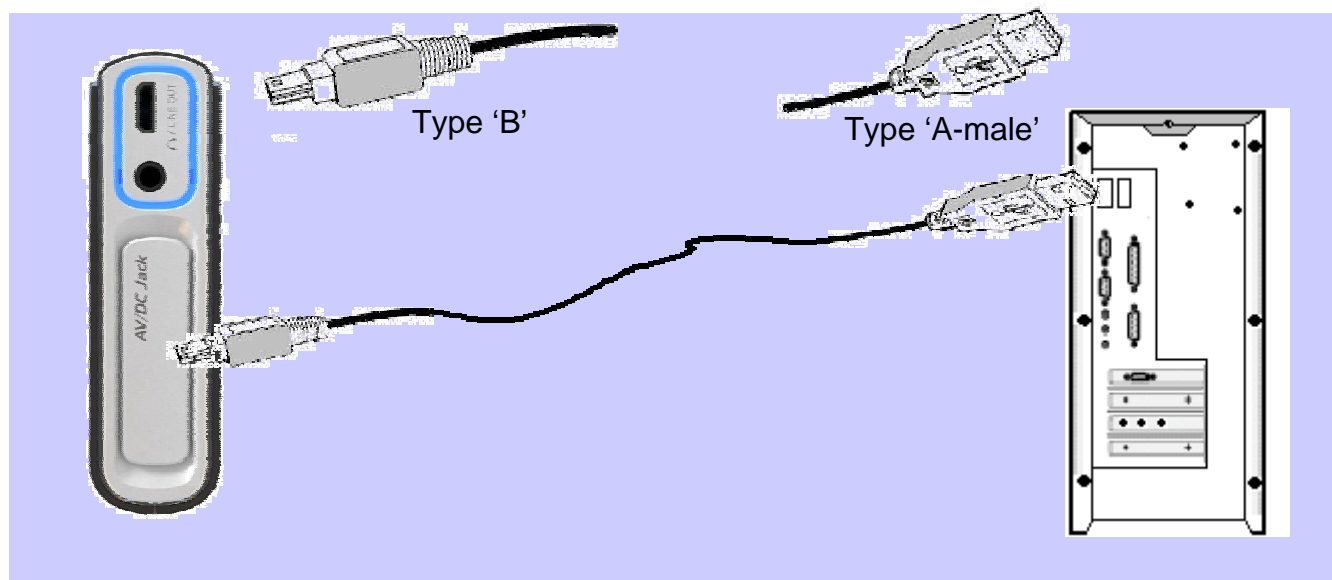


USB cable connection

Connecting to PC

- Connect the Looket USB cable included in the package to the USB port of your PC
- During USB connection with PC, do not operate any key of Looket PMP.
- If any Movie, Audio, FM, or Photo player is executed, escape from the play mode. Otherwise USB cannot connected.

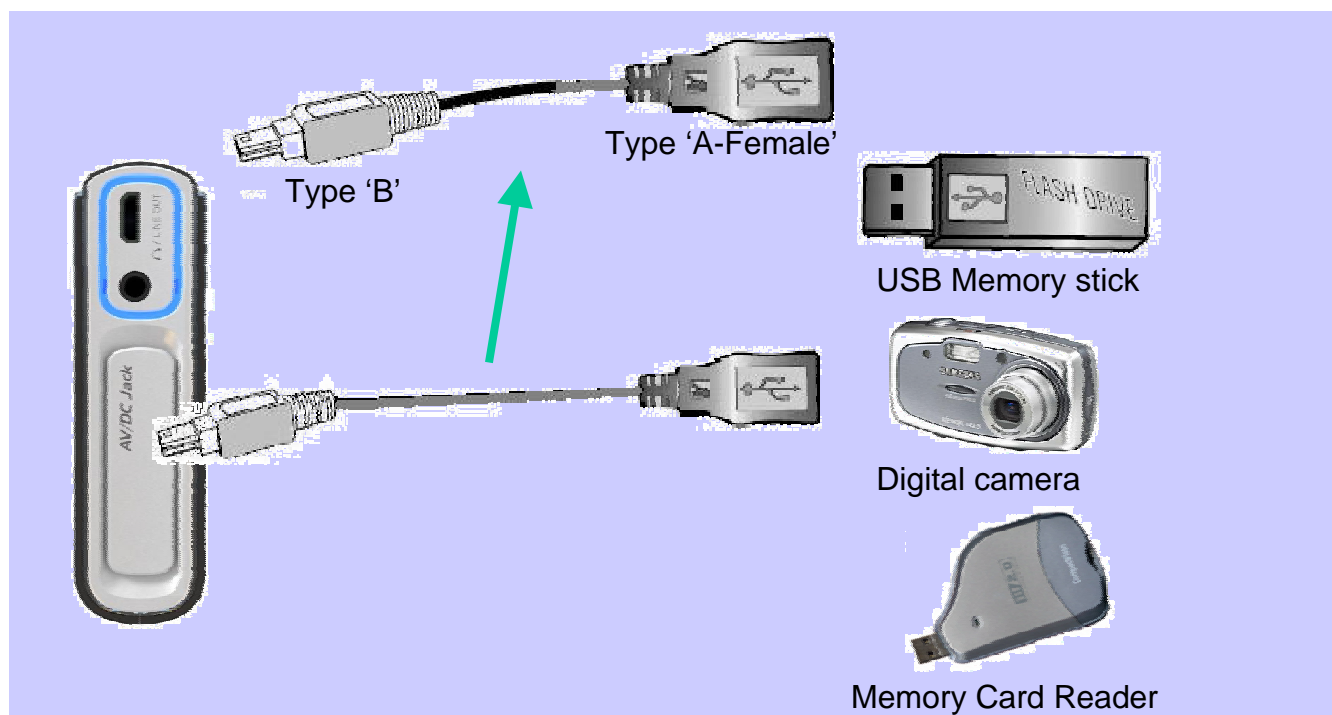
※ When the PC have Window98 Second version O/S, please install the driver from the enclosed CD.



USB cable connection

Connect to other USB products

- Connect the Looket USB Host cable included in the package to your other USB products such as USB memory sticks, digital cameras, memory card readers, etc.
- Refer to 'File Browser' function.



Disconnecting USB connection

※ To disconnect the USB connection from your PC, follow the below instructions.

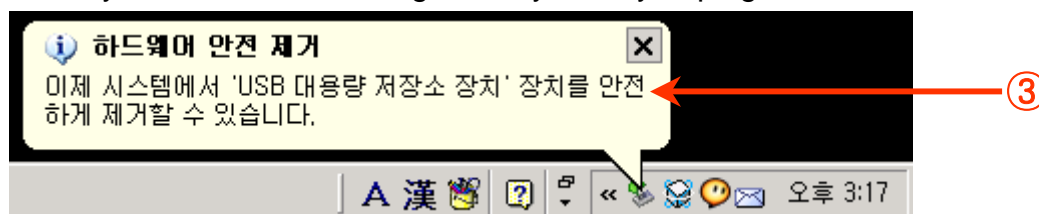
- Click the ① picture in the right bottom side of screen..



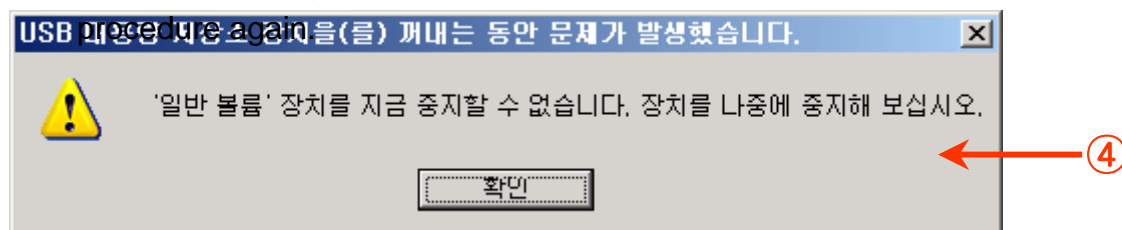
- Click the right button of your mouse when you see the message ②.



- When you see the ③ message, now you may unplug the USB cable from your Looket and computer.



- If you see the message ④, finish the program you are using for Looket properly and start the disconnecting



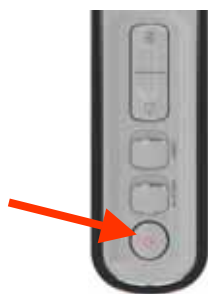
Operation

- Video Player
- Audio Player
- FM Radio
- Photo Viewer
- File Browser
- Recording
- Setup

Video player

Getting started

(1) Press and hold the power button



(2) Select the Video Player in the main menu and press in the middle of navigation key.



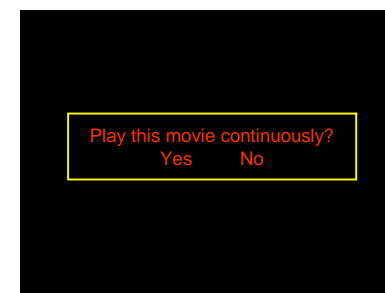
(3) Choose the movie file when you see the file structure like below.



(5) Choose "Yes" to play continuously, choose "No" to start from the beginning.



(4) If the file was stopped in the middle before, it will ask you to start from beginning or continuously.



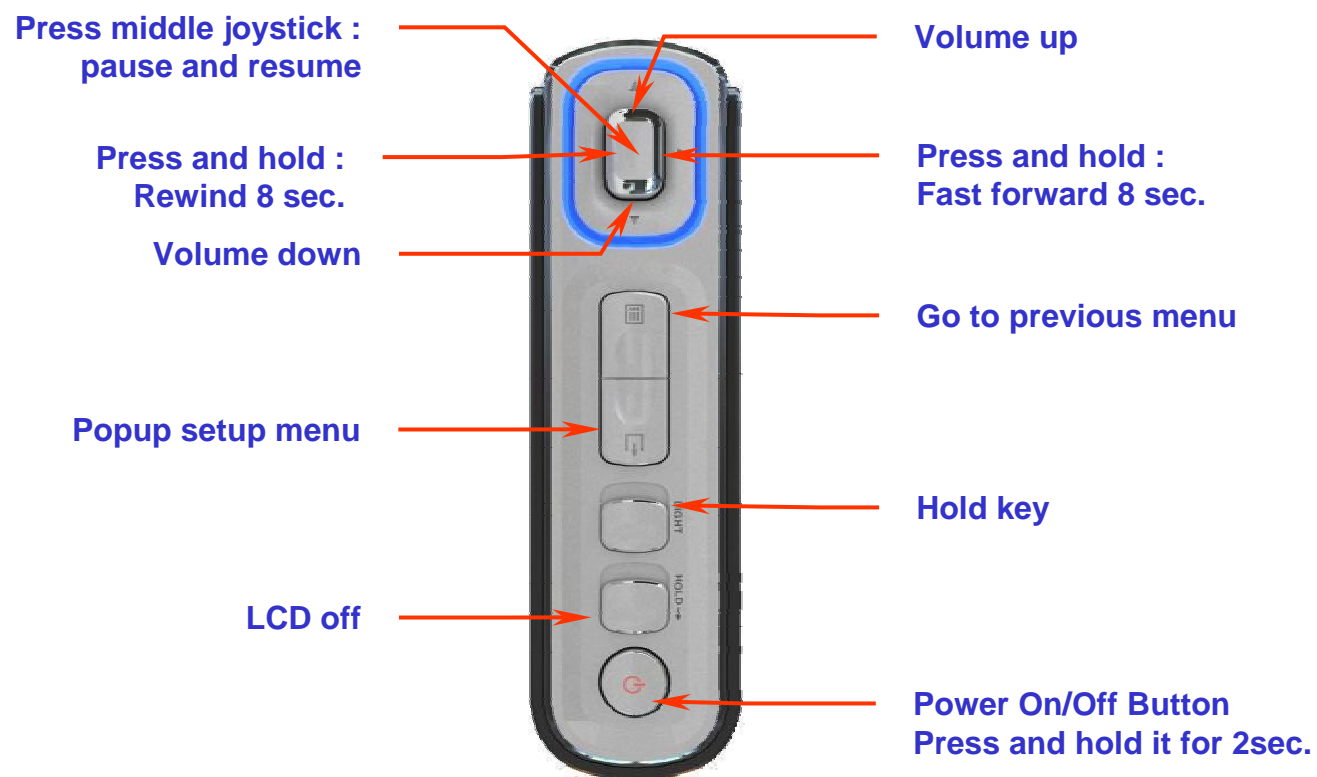
Video player

LCD display



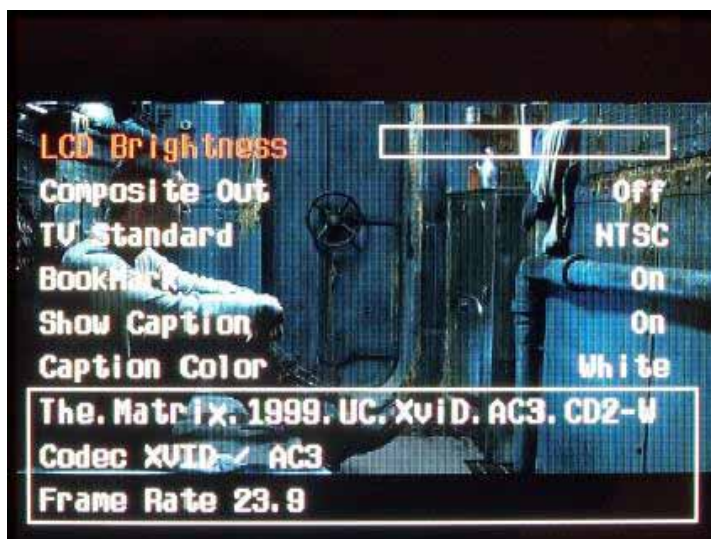
Video player

Key operation



Video player

Menu contents



LCD Brightness : By clicking navigation button to the left and right, the brightness of LCD screen can be changed.

Composite Out : Select AV out by using left and right button of navigation key.

TV Standard : Choose AV out signal between NTSC mode and PAL mode by using left and right button of navigation key.

BookMark : Enable book mark function which memorize the stop point of movie play by using left and right button of navigation key

Show Caption : Choose showing caption file on the LCD screen or not by using left and right button of navigation key

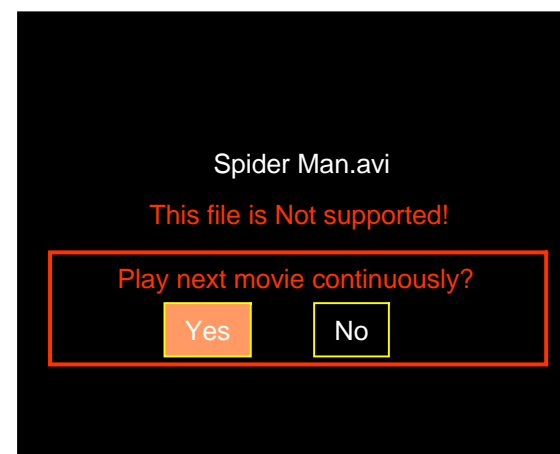
Caption Color : Choose the color of caption text between yellow and white by using left and right button of navigation key.

Video player

Codec information

When choosing the file whose codec cannot be supported by Looket, the warning message will appear. In some files, only audio codec can be supported.

Click 'Yes' for the next movie.

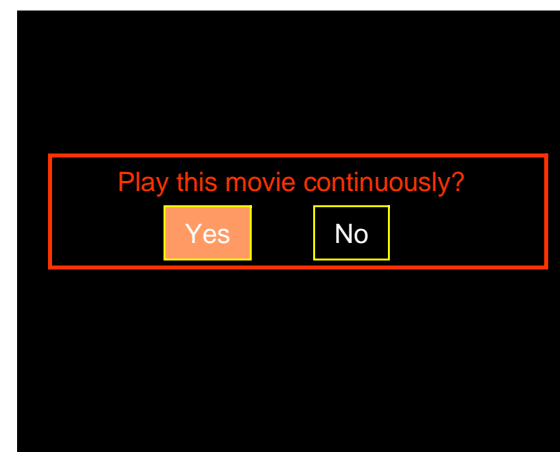


BookMark operation

During movie play, if you stop it by clicking ESC button, you will see the message like right side when you restart the movie play. It memorizes only recently played movie.

To see the movie continuously, press Yes.

To enable this function, turn on the Bookmark in Setup menu.



Audio player

Getting started

(1) Press and hold the power button.



(2) Select Audio Player and press in the middle of navigation button in the main menu.



(4) The selected music file will be played.

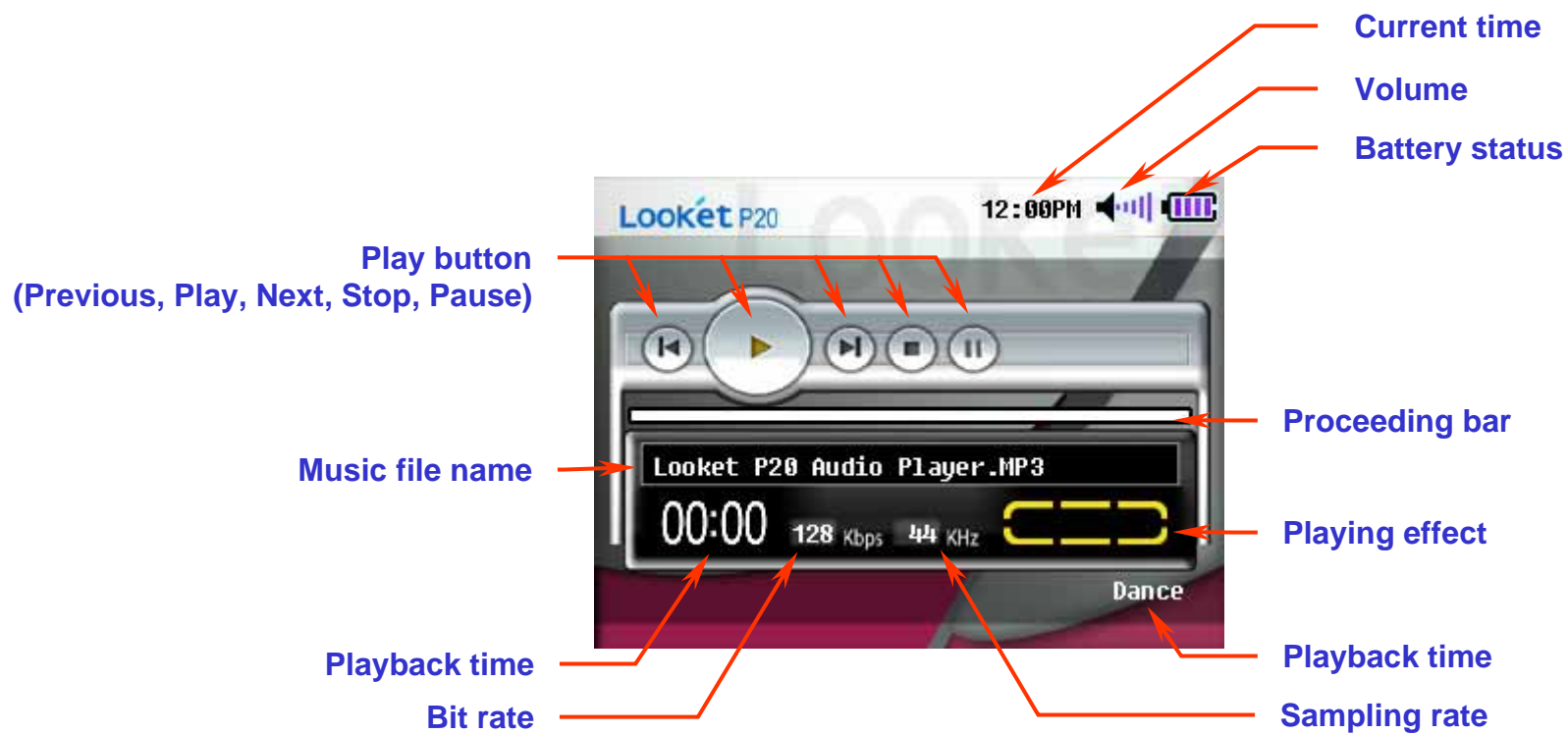


(3) Music file and folder in the Audio directory will be seen on the screen.



Audio player

LCD display



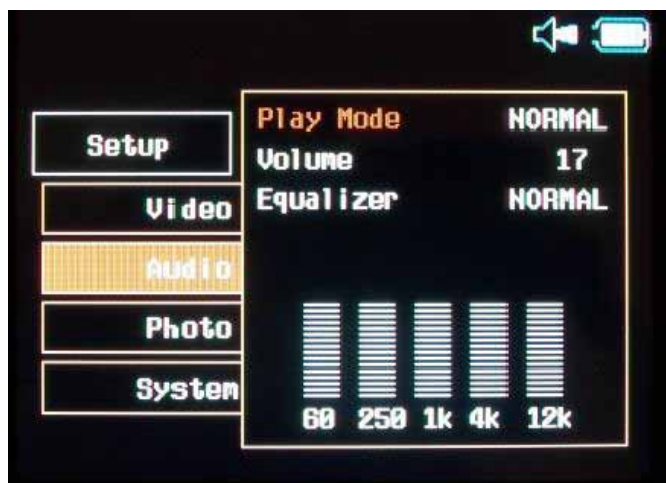
Audio player

Key operation



Audio player

Menu contents



Play Mode	Three modes are in the play menu Normal, Shuffle, Repeat
Volume	The Volume has 0~25 stages.
Equalizer	Select with left and right button on navigation key. There are 6 equalizer mode. Normal, Classic, Dance, Rock, Pop, User

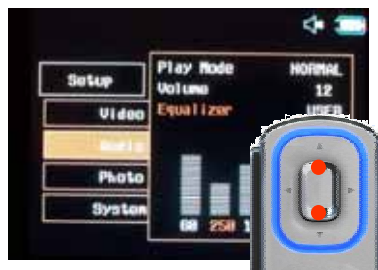
Audio player

Setting User mode in equalizer

Select USER in the equalizer mode and press in the middle of navigation key.



With navigation key, change the spectrum as you like. One step is 1dB.



When finishing one frequency's spectrum, move to other frequency with navigation key and set the spectrum.



After finishing USER mode, you can see the color of frequency is back to white.



After setting spectrum, press in the middle of navigation key to set.



FM Radio

Getting started

(1) Press and hold the power button.



(2) Select FM radio in the main menu and press in the middle of navigation key.



(4) To go to Preset mode, press menu button. Move to the frequency you want to listen and press select button.

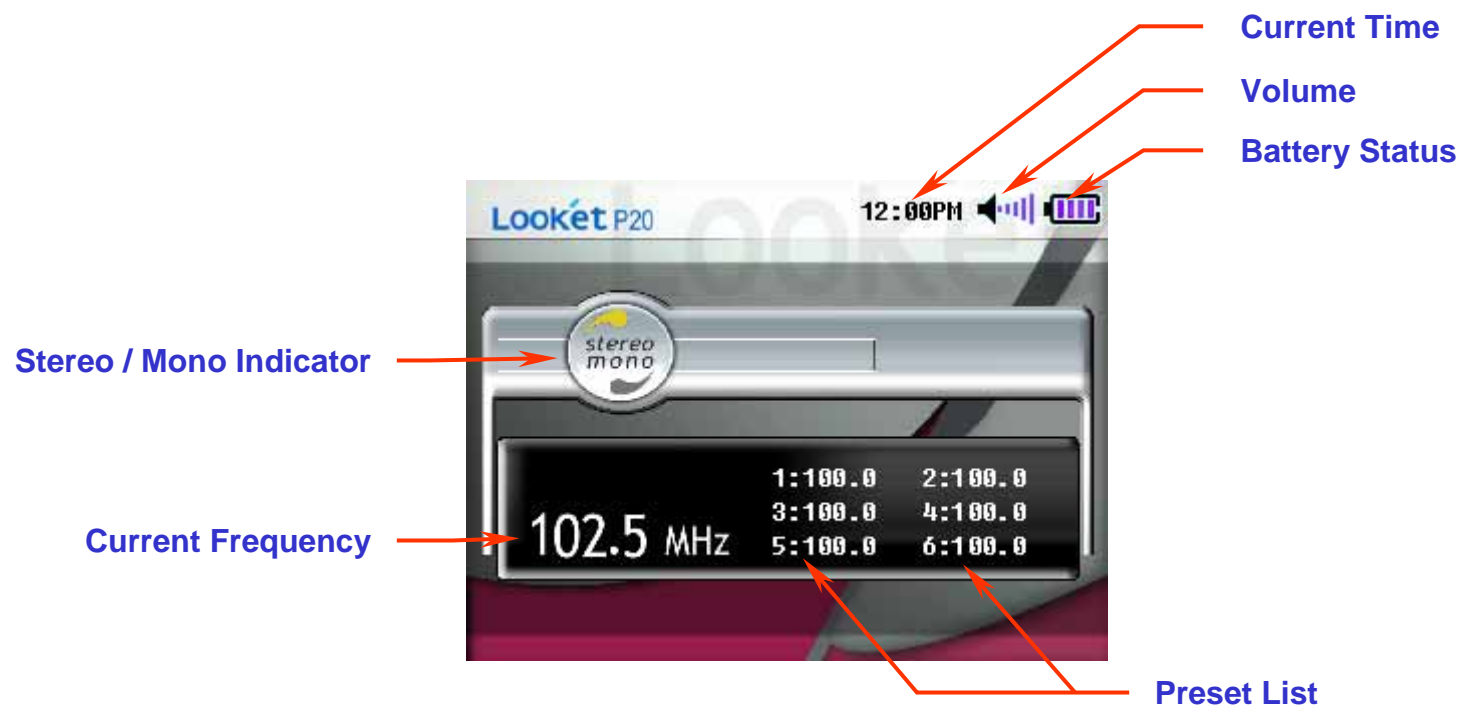


(3) To move the frequency of radio, press left or right button of navigation key.



FM Radio

LCD display



FM Radio

Key operation

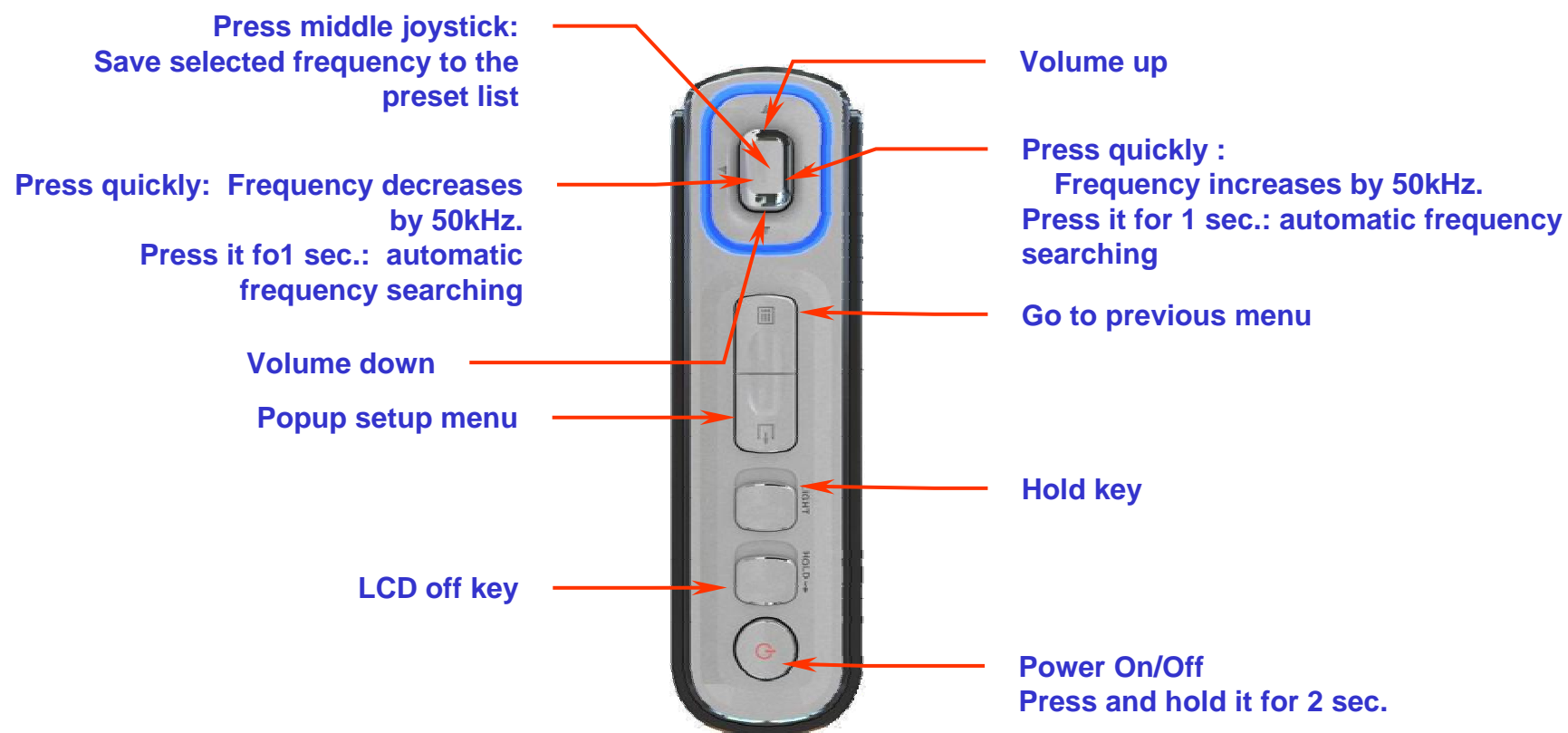


Photo viewer

Getting started

- (1) Press and hold the power button. (2) Select the Photo Viewer in the main menu and press in the middle of navigation key. (3) Select the file you want to see with the up and down button in the navigation key.



- (5-2) When you press the select button, the image will be enlarged by twice. (5-1) To rotate the picture, press the up and down button in the navigation key. (4) The image of selected file will be shown on LCD screen.



Photo viewer

Key operation

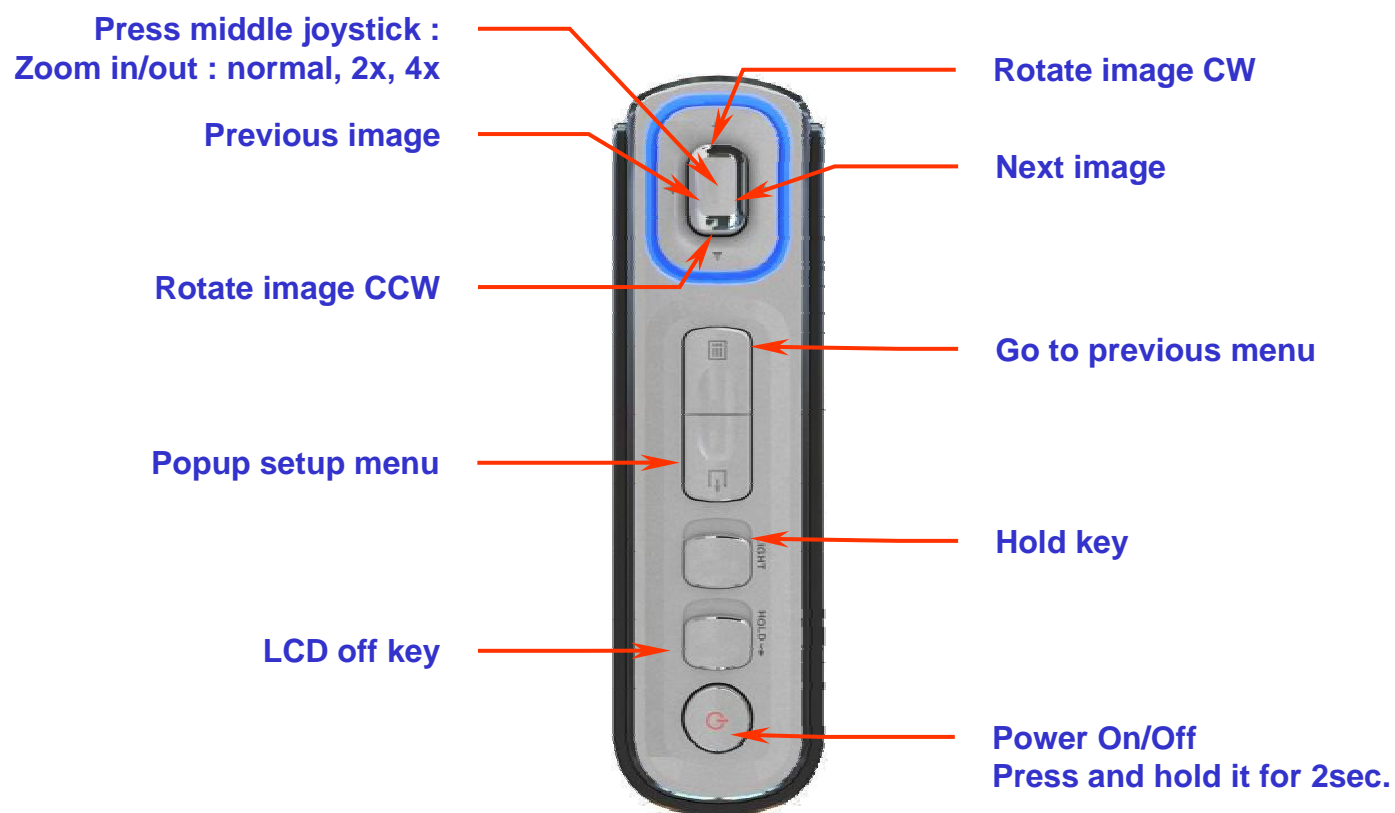


Photo viewer

Menu contents



Image Info

Decide which of the file information will be shown among the file name, size, resolution etc. Select On / Off to set.

Slid Show Time

Enable automatic slide view function. Select the time interval to move to the next photo. (2 sec, 5sec, 10sec) To change to the manual slide view, select 'off'.

※ Note

After rotating image, the zoom function cannot be used and after zoom the picture, the rotating function cannot be used.

File browser

Getting started

(1) Press and hold the power button.



(2) Select the File browser in the main menus and press select button.



(4) Press menu button to see the other available menus in the file browser.
(Copy, Delete, Move, Setup)

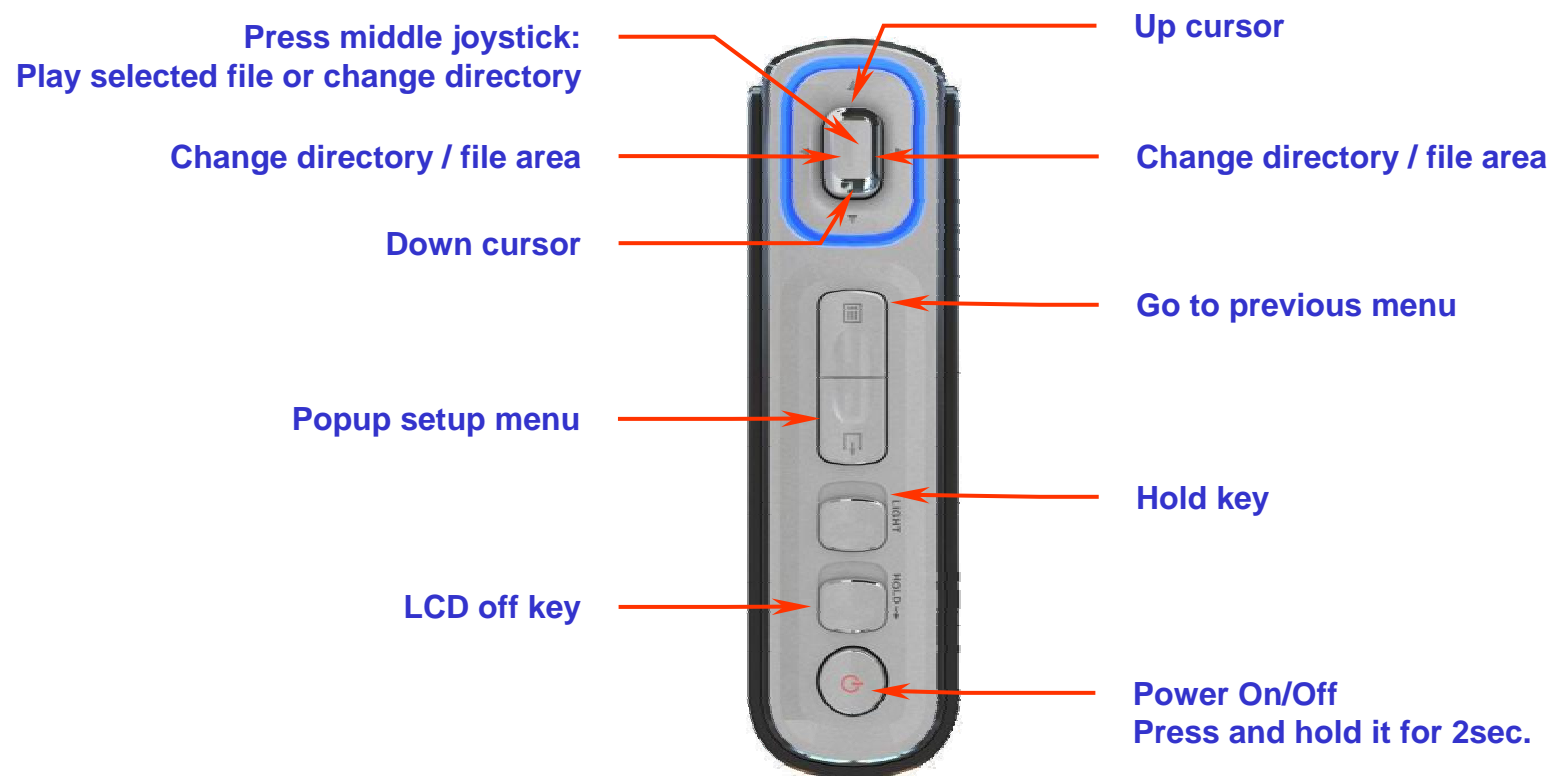


(3) To move to other folder, press left and right button in the navigation key.



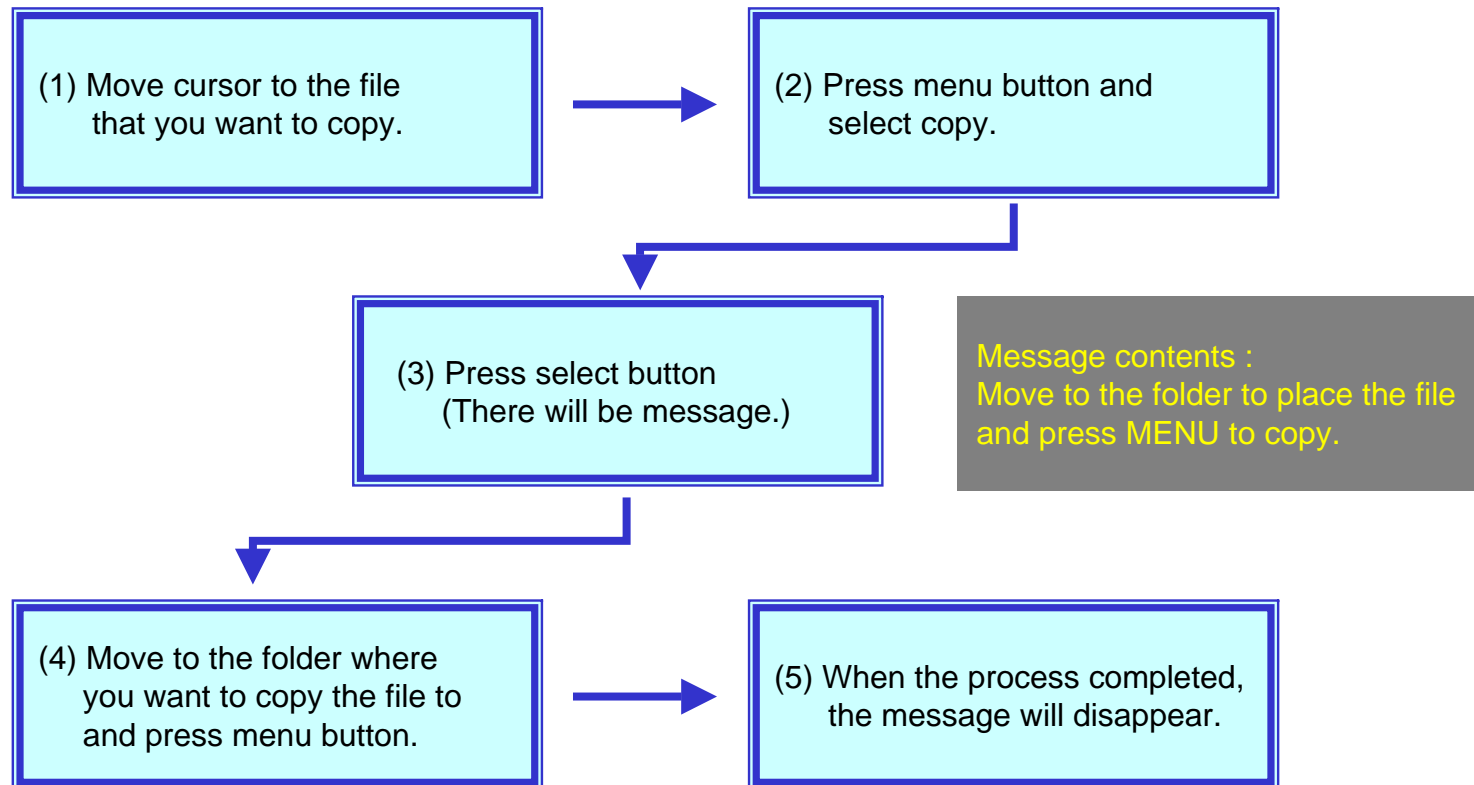
File browser

Key operation



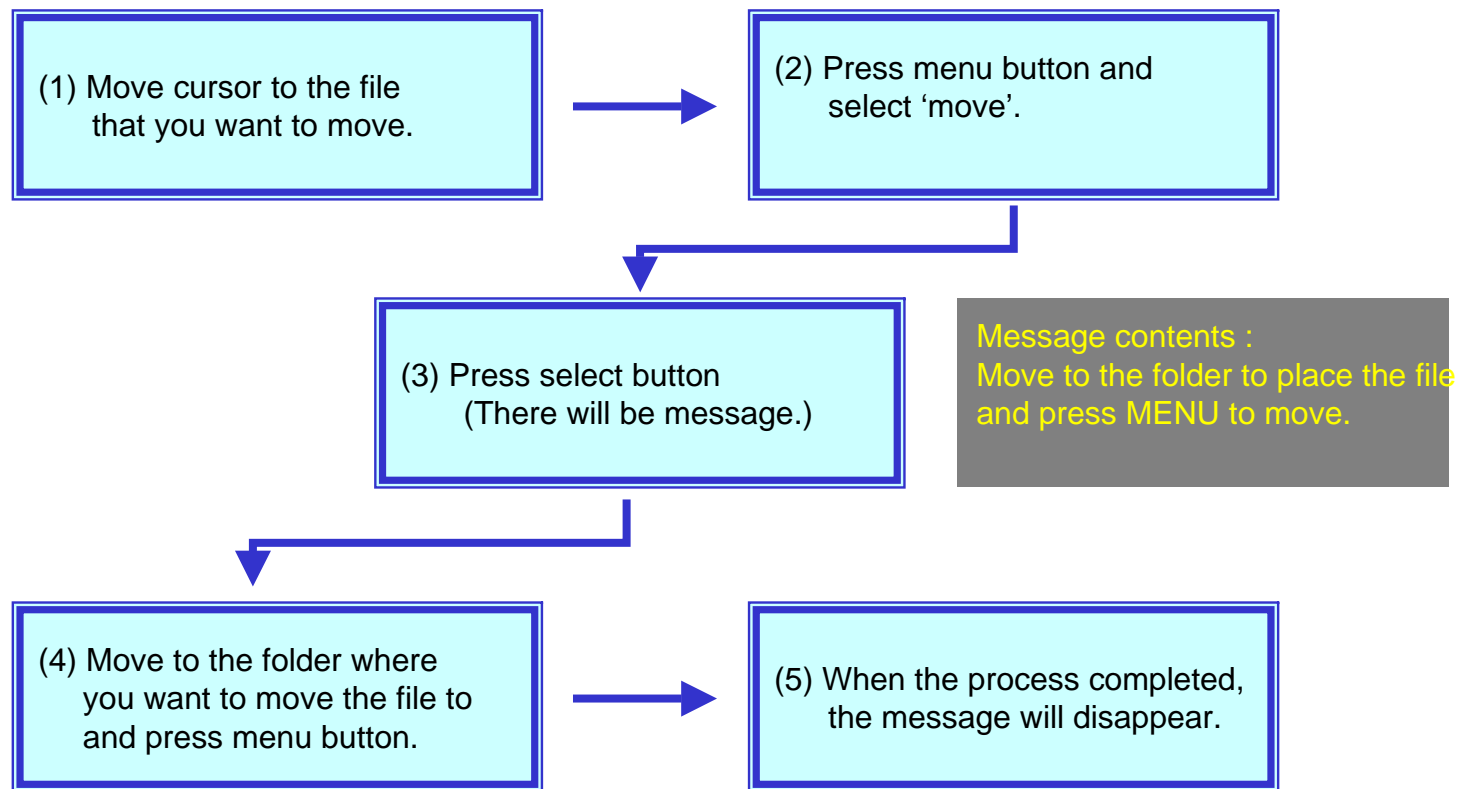
File browser

Copying files



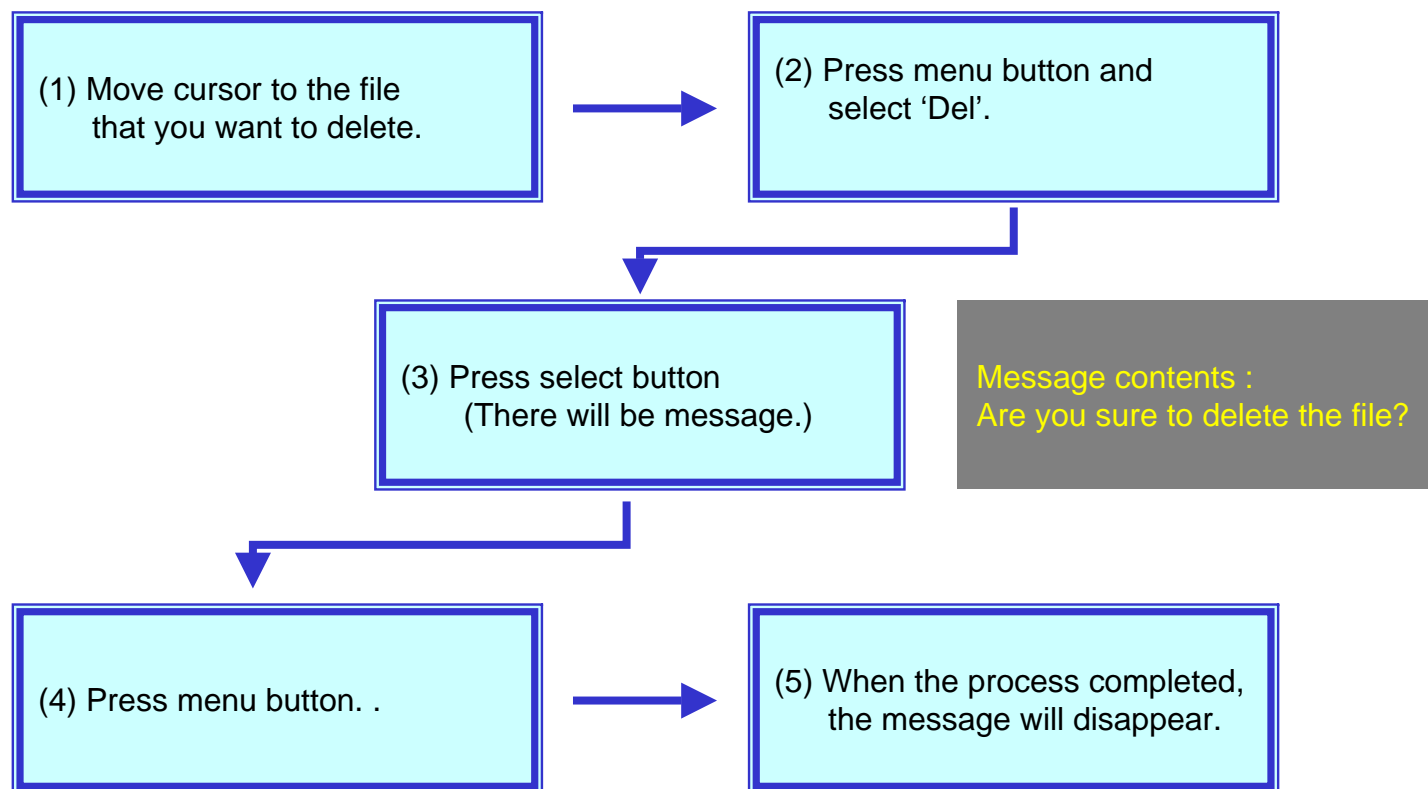
File browser

Moving files



File browser

Deleting files



Recording

Getting started

(1) Press and hold the power button.



(2) Select the Recording in the main menus and press select button.



(4) When there is not input signal
“Low Signal” message will be
appear on the screen.

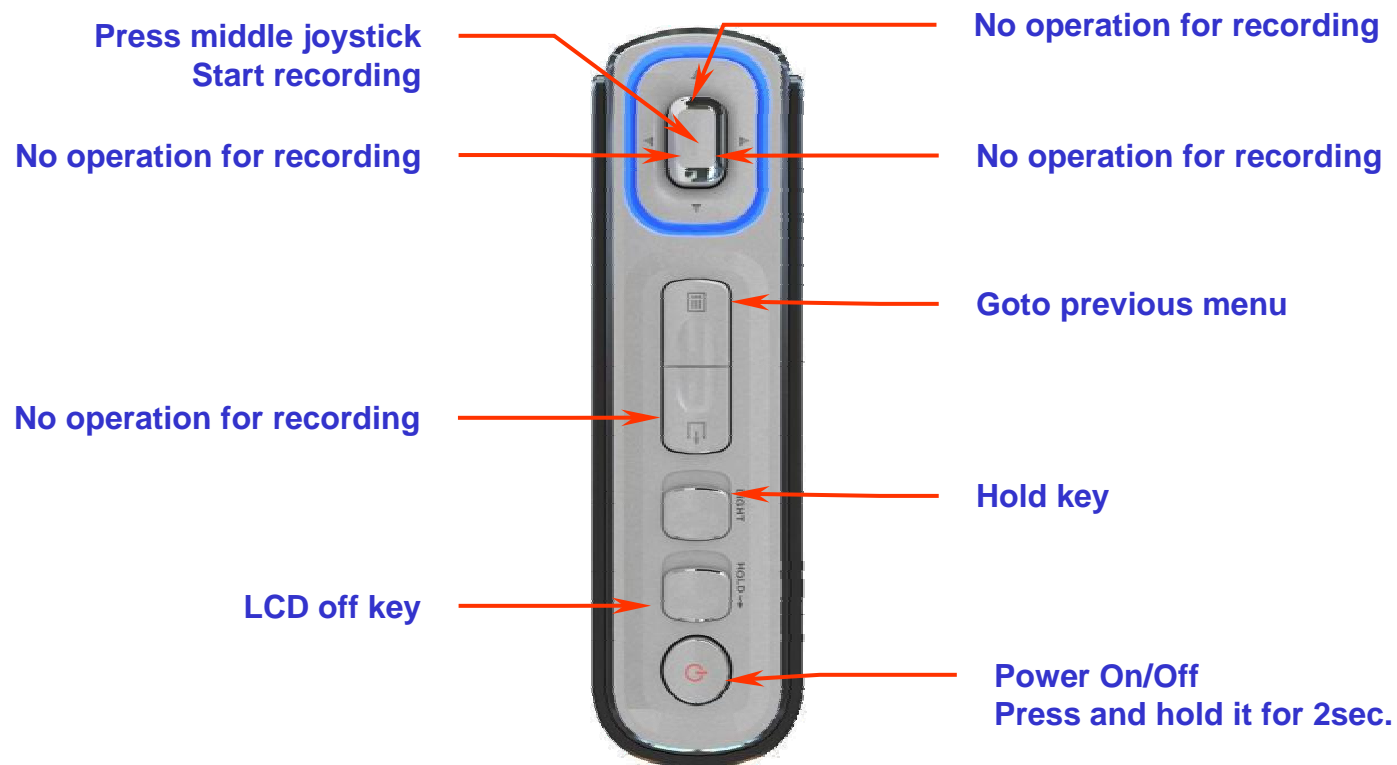


(5) To stop the recording, press ESC button.
The files created will be placed in the
recording folder.



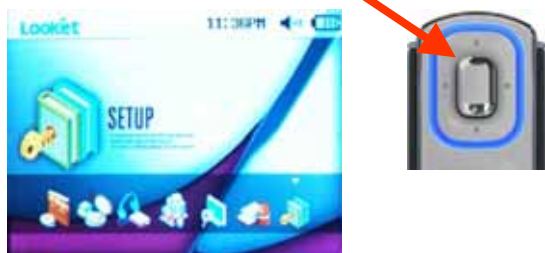
Recording

Key operation



Setup

Select the Setup in the main menus and press select button.



LCD display

Video Setup, Audio Setup, Photo Setup, System Setup are in the Set up menu. By choosing menu button in other player mode, you can connect directly to setup menu. About each menu's setup except system set up, please refer to the each menu.

Setup

System Setup – LCD Sleep



To save the battery, you can enable the LCD sleep function. There are options for 1 min, 5min, 10min and off.

When any audio or video file is not played, and there isn't any input signal to the device, the device can disconnect the signal to LCD temporarily screen to save the power consumption.

And you can also use LCD off button in the left side of unit.

Setup

System Setup – Power Sleep



To save the battery, you can enable the LCD sleep function.

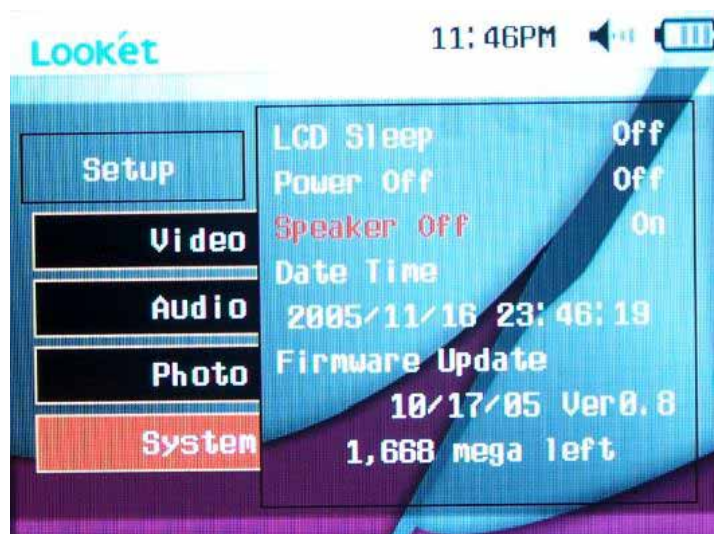
There are option for 1 min, 5min, 10min and off.

When any audio or video file is not played, and there isn't any input signal to the device, the device can turned off automatically to save the power consumption.

And you can also use power off button in the left side of unit.

Setup

System Setup – Inner Speaker



This unit have built-in stereo speaker.

When you plug in the earphones to the Looket, the built-in speaker will be disabled.

But if you want to save the battery more, you can turn off the built-in speaker power when you use the earphones.

Setup

System Setup – Date Time



You can set the date and time.

When you turn on the device first time, the time might not be correct depending on your countries.

Please set the right date and time for your location.

When the unit is not used for a long time, the time can be initialized.

Press select button in Date time menu.



Use the navigation key to set the time and date.



Press select button when you complete the time setting.



Setup

System Setup – Firmware Update



다음 단계에 따라 **Firmware Update**를 실행한다.

※ **Update**를 하기 전에 **AC Adapter**를 반드시 연결하여야 한다.

→ 본 **PMP**의 최상위 폴더에 **Upgrade**할 파일을 **USB**를 이용하여 **PC**에서 복사한다.

→ **PMP**의 상위 메뉴에서 **Setup**으로 들어간다.

→ **Setup**메뉴 중에서 **System**을 선택한다.

→ **System** 메뉴 중에서 **Firmware Update**를 실행한다.(좌측그림)

→ 화면에 **Update**를 실행할 것인지를 다시 한 번 확인하는 메시지가 뜨고 'Yes'를 선택하면 **Update**가 실행된다.

→ **Update**가 실행되는 도중에는 절대로 전원을 **Off**하거나 기타 다른 동작을 하지 않도록 주의하여야 한다.

Additional Information

Trouble Shooting

Trouble	Solution
The product will not power on or any function is not operate.	Check the rechargeable batteries are not charged. Check the battery's anod and cathod are correctly connected.
	Check the system folder is deleted by mistake. If yes, copy the System folder from CD to the device.
Nothing is displayed on the LCD screen.	Check the LCD ON/OFF switch. When the LCD switch is OFF, the screen will not displayed.
	Check the LCD brightness in the setup menu. When the LCD is too dark during daytime, the screen might not be seen well.
Nothing can be heard in speaker.	Check the speaker in setup menu.
	Check the earphones are connected. When using earphones, the built-in stereo speaker does not operate.
When connecting TV, the screen is not displayed or not clear.	Check the TV standard in setup menu.
There is 'Beep' sound in the earphones.	Check the 'AV out' in the Setup menu. It should be off when you use earphones.. This device use same port for earphones and AV out.
There is too much noise in FM radio or the sound is not clear.	Check the earphones are connected completely. The radio use the earphones as antenna, so the earphone should be connected.
	The inside of building or inside of subway might not be good place to get the strong signal.
The movie file of audio file is not played or only sound is played in movie file.	This can be happen when the codec is not supported by the device. Please play the file in computer and if it played without problem, convert the file with provided converter program.
The video or photo file is displayed in smaller size than the screen.	During editing movie file, if the screen is set to fixed size, this can be happen.
My computer cannot recognize Looket.	Check the power of the unit.
	Except for Windows 2000, XP, you need to instak tge driver file in other operating system.
	Use the other USB cable or other port of computer. When you use extention cable, please check the cable is connected fully.
	Depending on the hardware of some computer, the Looket might not be recognized. Please contact us to solve this problem.

Specification

File Formats

Video	Support Codec	MPEG4 Simple profile, XviD, WMV9
	Support File Format	Divx3.11, 4, 5, 5pro
	Output Format	AVI, ASF, WMV
Audio	Encoding	NTSC / PAL
	Support Codec	Composite video output 75Ohm
	Encoding	MPEG 4 simple profile, ASF file format
Image	Support Codec	MP3, WMA, AC3, OGG, G.726
	Support File	G.726
Image	Support File	JPEG, BMP, GIF

Specification

Technical Specification

Display	3.5" TFT Landscape LCD, 16.7 Million color, QVGA 320x240 pixel Viewing angle : 60 degrees(Right & Left)
HDD	20GB, 1.8 inch, FAT32
Interface	USB2.0 Slave(max 480Mbps) USB1.1 Host full speed
Audio	Audio output : Max 40mW Bandwidth : 8 ~ 96kHz Bit rate : 32kbps ~ 320kbps SNR : 97.0dB
FM Radio	Bandwidth : 87.5MHz ~ 108MHz SNR : 60.0dB Antenna : earphones
Dimension	77.5 mm(L) × 104 mm(W) × 23 mm(D)
Scalability	Firmware upgradeable
Operating temperature	5℃ ~ 45℃
Optional Accessory	Remote control & FM transmitter
Power Source	Internal : Replaceable and rechargeable, Lithium-ion battery External : Home charger(AC adapter DC 5V 1A)

Warranty

Sysonchip, Inc. warrants Looket PMP against defects in material and workmanship, under normal use and service, for one (1) year from the date of purchase.

The warranty period of a rechargeable battery and consumables are six (6) months from the date of purchase. The Serial sticker on the battery should not be detached for the warranty.

Incompatibility is not a defect covered by Sysonchip's warranty. If the product is found to be defective in material or workmanship during this period, Sysonchip or one of its authorized distributors will, at its option, repair or replace the defective product without charge when furnished with proof of retail purchase. If you ship the product to Sysonchip or one of authorized distributors, you must use the original container or equivalent and the shipping charges are responsible for you. Sysonchip or distributors will bear shipping charges for returning the product.

This warranty does not apply to any product which has been subjected to alteration, unsealing or disassembly in any cases.

Sysonchip is not responsible for incidental or consequential damages resulting from breach of any express or implied warranty, including damage to property and, to the extent permitted by law, damages for personal injury. This warranty is in lieu of all other warranties including implied warranties of merchantability and fitness for a particular purpose.

Warranty limitations and exclusions

This warranty applies only to the original consumer purchaser and is not assignable or transferable. This warranty does not apply to any product which has been subjected to misuse, misapplication, abuse, abnormal use, negligence, alteration or accident, or any product having its serial number altered or removed.

This warranty does not apply to any defects or damage directly or indirectly caused by or resulting from the use of unauthorized replacement parts and/or service performed by unauthorized person.

=====

Some jurisdictions do not allow the exclusion or limitation of incidental or consequential damages, so the above limitations or exclusion may not apply to you. This limited warranty gives you specific legal right, and you may also have other rights that vary from jurisdiction to jurisdiction

※ HDD, LCD warranty

Looket PMP is portable device, therefore the free warranty cannot apply to HDD and LCD when it damaged from misusing or abuse.

※ Power supplies and cables

Any damages from using power supplies or cables which are not provided or officially approved by the manufacture cannot be included in the warranty.

Service Information

Homepage	:	http://www.looket.com	or	http://www.looket.co.kr
E-mail	:	sales@sysonchip.co.kr		
Address	:	14Fl. Sahakyeongum Bldg., Dunsan-Dong, Seo-gu, Daejeon, 302-828, Korea		
Phone	:	++82 42 864 4665 (ext.105)		
FAX	:	++82 42 864 4664		

FCC NOTICE

THIS DEVICE COMPLIES WITH PART 15 OF THE FCC RULES.
OPERATION IS SUBJECT TO THE FOLLOWING TWO CONDITION:
(1) THIS DEVICE MAY NOT CAUSE HARMFUL INTERFERENCE, AND
(2) THIS DEVICE MUST ACCEPT ANY INTERFERENCE RECEIVED,
INCLUDING INTERFERENCE THAT MAY CAUSE UNDERSIRED
OPERATION.

This equipment has been tested and found to comply with the limits for a Class B digital device, pursuant to part 15 of the FCC Rules. These limits are designed to provide reasonable protection against harmful interference in a residential installation. This equipment generates, uses and can radiate radio frequency energy and, if not installed and used in accordance with the instructions, may cause harmful interference to radio communication. However, there is no guarantee that interference will not occur in a particular installation. If this equipment does cause harmful interference to radio or television reception, which can be determined by turning the equipment off and on, the user is encouraged to try to correct the interference by one or more of the following measures :

- Reorient or relocate the receiving antenna.
- Increase the separation between the equipment and receiver.
- Connect the equipment into an outlet on a circuit different from that to which the receiver is connected.
- Consult the dealer or an experienced radio/TV technician for help.

NOTE : The manufacturer is not responsible for any radio or TV interference caused by unauthorized modifications to this equipment. Such modifications could void the user's authority to operate the equipment.