

The World-Wide Best Technology

SysOn Bluetooth GPS User Manual v.1.0

SysOnChip, Inc.

Address

14FL, Sahakyeongum Bldg., 929, Dunsan-dong,
Seo-gu, Daejeon, 302-120, Korea

Phone / Fax Number

Tel : +82.42.864.4665
Fax : +82.42.864.4664

Sales Contact

E-mail: dian@sysonchip.co.kr

Website URL

<http://www.sysonchip.co.kr>



The World-Wide Best Technology

SysOn Bluetooth GPS User Manual v.1.0



The Bluetooth trademarks are owned by their
proprietors and used by SysOnChip under



SysOnChip, Inc.

www.sysonchip.co.kr

CONTENT

- 1. Product Designation
- 2. Getting Started
- 3. PDA Connection Guide
 - 3.1. Connection with Fujitsu Siemens Pocket LOOX 600
 - 3.2. Connection with with HP iPAQ Series
- 4. Users' Tips
- 5. Unit Package
- 6. Optional Accessory

Note
Thank you for purchasing SysOn™ Bluetooth GPS receiver. SysOn™ Bluetooth GPS is a wireless GPS receiver which turns a Bluetooth-enabled PDA or computing device to a wireless navigation system.
Please carefully read this user guide instruction before using the product.

Disclaimer and limitation of liability
Sysonchip, Inc. and its affiliated companies assume no responsibility for any damages and loss resulting from the use of this manual and also by deletion of data as a result of malfunction, dead battery, or misuse of the product in any way.

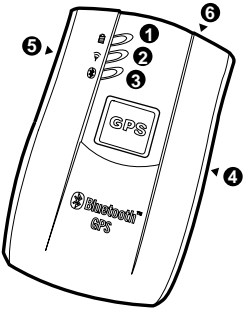
Warning
Any kind of changes or modification of the product that are not officially approved by Sysonchip will void the owner's warranty and also any other obligation of Sysonchip to repair or replace the product.

Information and instruction in the manual is subject to change without notice at any time.

Online Product Registration
http://www.sysonchip.co.kr/eng/supp/sup_reg.htm

1. Designation

- 1. Battery Status LED (red/green)
- 2. GPS status LED (orange)
- 3. Bluetooth status LED (blue)
- 4. Optional external antenna connector port
- 5. Power jack
- 6. Power switch



NO	LED	Function
1	Battery Status LED	RED ON : During charging battery with connection to a power charger
		OFF : Once battery is fully charged
		GREEN ON : Low Battery Indication. Charge battery immediately. OFF : Normal status. Battery has adequate power supply.
2	GPS Status LED	ORANGE BLINKING : Position is fixed on the reception of GPS signal (1 PPS Output)
3	Bluetooth Status LED	BLUE BLINKING : No Bluetooth connection yet. Finding Bluetooth connection.
		ON : Bluetooth connection is on and ready for data transmission
4	Optional external antenna connector port	You may use an external antenna optionally instead of a built-in internal antenna. Simply plug the external antenna into the port.
5	Power Jack	Connect a power charger to the power jack to recharge the internal battery
6	Power Switch	Power on/off switch

2. Getting Started

2.1. Charge the battery

- 1) Before use SysOn™ Bluetooth GPS Receiver, the battery must be fully charged. Connect the power charger to the power jack, then plug into an electrical outlet. As the device is charging, the LED on the wall charger will show red light and turn to yellow when it is fully charged. And also, during charging, the battery status LED on the SysOn™ Bluetooth GPS itself will show red light and turn off once it is fully charged.
- 2.2. Turn on the GPS receiver
 - 1) Turn on the SysOn™ Bluetooth GPS Receiver using the power switch. The Bluetooth LED (blue) will blink.
 - 2) Once GPS position is fixed, the GPS status LED (orange) will blink.
- 2.3. Connect to Bluetooth enabled PDA or computing devices
 - 1) Perform Bluetooth device discovery from your Bluetooth-enabled PDA or mobile computing devices. Refer to the user guide manual of your Bluetooth enabled PDA or devices for Bluetooth connection instructions.
 - 2) After the connection is done between SysOn™ Bluetooth GPS and a Bluetooth-enabled device, the Bluetooth LED (blue) will be on.

3. PDA Connection Guide - 01

3.1. Connection with Fujitsu-Siemens Pocket LOOX 600



- 1. Power on PDA
- 2. Turn on the Bluetooth on/off switch of the PDA



3. You will see PDA main screen



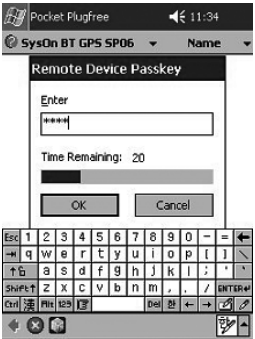
4. Tab "Start" and click "Pocket Plugfree" for Bluetooth connection



5. Several tasks require you to locate device and connect to it. And, it will automatically find Bluetooth enabled devices placed around the PDA. Please tab "SysOn BT GPS SP06".



6. You will see the "Remote Device Passkey" requirement for device pairing. The security key is also called a "Link Key". You will be required to enter passkey to establish a paired relationship between devices. This is required at the first time only once.



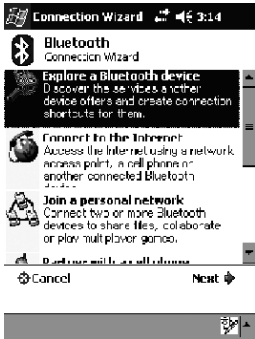
7. Input 0000 as the passkey (arabic numeral 0, not alphabet letter O), and tab "OK". This is required at the first time only. It is called bonding or pairing device.



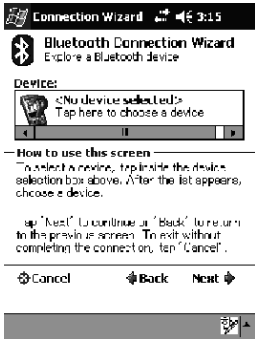
8. Tab "SPP Slave"



3. Tab "New" at the bottom bar.



4. Bluetooth connection wizard starts. Click "Next".



5. Click "Next"



6. Several tasks require you to locate a device and connect to it. Then, it automatically find Bluetooth devices placed around the PDA. Click "SysOn BT GPS 0FB6".



7. You will be required to enter passkey to establish a paired relationship between devices.
This is required at the first time only once.



8. Enter 0000 as the Passkey (Arabic numeral 0, not alphabet letter O).
And, tab "OK".



9. Select 'SPP slave' of Service Selection.
Tab 'Next'.



10. Connection shortcuts were successfully created. Tab 'Finish'.



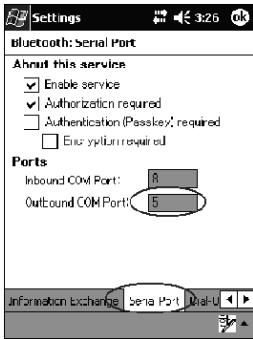
11. Connection were successfully established with Bluetooth GPS Receiver on SPP Slave.
To connect with BT GPS, double click "SysOn BT GPS 0FB6 SPP slave" icon, or tab and hold it and click "Connect".



12. Tab "Active Connections".
You will see the connection status.



13. To identify the COM port:
a. From the main screen, tap the Bluetooth icon at the bottom bar, and tap "Bluetooth Settings".
b. Tap "Serial Port".
c. Check the inbound and outbound COM port no.
d. Tap OK.
e. Use "Outbound COM Port" no. for your navigation software setting.



Note. The inbound COM port is used when any other device initiates a serial connection. The outbound COM port is used when you initiate a serial connection to another device.

4. Users' Tips

Following environments may affect GPS signal receptions.

- Some vehicles having heavy metallic sun protecting coating on windshields, which may affect the GPS signal. Optional external antenna can be helpful by placing it on the roof of the vehicles
- In and around high buildings
- Under bridges or in tunnels
- Low battery of PDA or GPS receiver

In order to use Syson GPS efficiently, please follow the below principles.

- Please place the GPS receiver to be able to see the clear view of the sky
- In case of low battery level (Green LED warning), please recharge the GPS battery fully.

Please check the correct "port" and "baud rate" set up.

5. Unit Package

SysOn Bluetooth GPS Receiver
User Manual
Wall Charger

6. Optional Accessory

Optional External Antenna

User Information

This device complies with part 15 of FCC Rules. Operation is subject to the following two conditions: (1) This device may not cause harmful interference, and (2) This device must accept any interference received, including interference that may cause undesired operation.

The FCC require the user to be notified that any changes or modification made to this device that are not expressly approved by **SysOnChip, Inc.** may void the user's authority to operate the equipment.

To comply with FCC RF exposure requirement, this device and its antenna must not be co-located or operating in conjunction with any other antenna or transmitter.

Limited Warranty

Sysonchip, Inc. warrants SysOn Bluetooth GPS product against defects in material and workmanship, under normal use and service, for one (1) year from the date of purchase.

Incompatibility is not a defect covered by Sysonchip's warranty. If the product is found to be defective in material or workmanship during this period, Sysonchip or one of its authorized distributors will, at its option, repair or replace the defective product without charge when furnished with proof of retail purchase. If you ship the product to Sysonchip or one of authorized distributors, you must use the original container or equivalent and the shipping charges are responsible for you. Sysonchip or distributors will bear shipping charges for returning the product.

Sysonchip is not responsible for incidental or consequential damages resulting from breach of any express or implied warranty, including damage to property and, to the extent permitted by law, damages for personal injury. This warranty is in lieu of all other warranties including implied warranties of merchantability and fitness for a particular purpose.

WARRANTY LIMITATIONS AND EXCLUSIONS

This warranty applies only to the original consumer purchaser and is not assignable or transferable.

This warranty does not apply to any product which has been subjected to misuse, misapplication, abuse, abnormal use, negligence, alteration or accident, or any product having its serial number altered or removed.

This warranty does not apply to any defects or damage directly or indirectly caused by or resulting from the use of unauthorized replacement parts and/or service performed by unauthorized person.

Some jurisdictions do not allow the exclusion or limitation of incidental or consequential damages, so the above limitations or exclusion may not apply to you. This limited warranty gives you specific legal right, and you may also have other rights that vary from jurisdiction to jurisdiction.