

Locket G7 GPS System

**사용자 매뉴얼 v1.0**



## CONTENT

1. Designation
2. Unit Package
3. Caution
4. Main Function

- Do not plug in a car cigarette charger before starting a vehicle.  
It may damage the fuse of the cigarette charger of Locket G7.
-

### Note

Thank you for purchasing Locket G7 GPS receiver.

Locket G7 is handheld GPS receiver using without any PDA or computing device.  
Please carefully read this user guide instruction before using the product.

### Disclaimer and limitation of liability

Sysonchip, Inc. and its affiliated companies assume no responsibility for any damages and loss resulting from the use of this manual and also by deletion of data as a result of malfunction, dead battery, or misuse of the product in any way.

### Warning

Any kind of changes or modification of the product that are not officially approved by Sysonchip will void the owner's warranty and also any other obligation of Sysonchip to repair or replace the product.

Information and instruction in the manual is subject to change without notice at any time.

---

## 1. Designation



1. Power ON/OFF Button

2. Function Button 1

3. Function Button 2

4. Function Button 3

5. 5-contacts Button

6. GPS Antenna

7. Speaker

8. Battery Status LED

Red – During charging battery with  
connection to a power charger

Green – Battery is fully charging

---



9. Battery cover



- 10. Soft reset
- 11. Hold switch
- 12. Optional external antenna connector
- 13. Power jack



- 14. SD card socket
  - 15. Stereo Earphones jack
-



16. Style

17. Car mount holder



18. 24Pin SYNC&CNS connector

<b>Operating System</b>	<b>Microsoft Windows CE.NET 4.2</b>
<b>Processor</b>	<b>Samsung S3C2440A RISC Microprocessor at 400MHz</b>
<b>Memory</b>	<b>64MB SDRAM and 32MB Flash Memory</b>
<b>GPS Chipset</b>	<b>SiRFstarIII</b>
<b>GPS Antenna</b>	<b>High performance Helical Antenna</b>
<b>Display</b>	<b>Samsung Wise View 3.5" TFT LCD 320x240 pixels with Landscape Mode</b>
<b>User Controls</b>	<b>5-way Navigation Jog Button</b> <b>4 function Buttons (Home, GPS, Map enlargement, Map reduction)</b> <b>Touch Screen</b> <b>Hold Button</b> <b>Power ON/OFF</b>
<b>Expansion Slot</b>	<b>1 SD(Secure Digital)/MMC(Multi Media Card) Memory Card Slot</b>
<b>Audio</b>	<b>3.5mm Stereo Headphone Jack and Built-in Speaker</b>
<b>External Ports</b>	<b>Mini USB Connector for Active Sync and Battery Charging</b>
<b>Dimension</b>	<b>115 x 73 x 21 mm</b>
<b>Battery</b>	<b>Rechargeable and Removable Li-ion Battery (1,100mAh)</b>
<b>Power</b>	<b>AC Adapter : Input : 110V-230V 50Hz Output : 5V, 1.0A</b> <b>Cigarette Car Charger : Input : 12V Output : 5V, 1.5A</b>

---



## 2. Unit Package

- Locket G7 GPS Receiver
  - Car Charger
  - USB Sync Cable
  - Rechargeable Lithium-ion Battery
  - Device holder for Car Mount
  - AC Adapter (Option)
  - External Antenna (Option)
- 
- Package contents might vary  
depending on countries without notice
-

### 3. Caution

- Never connect or disconnect the power with wet hand.
  - Do not leave Locket G7 in places of high Temperature, such as in a sun-heated car.
  - Do not damage the AC adapter cord by pulling or stretching.
  - Never drop or strong impact on Locket G7.
  - Keep magnetic objects (credit cards, floppy disk, etc.) away from Locket G7.
  - If the Locket G7 is subjected to a sudden temperature change, for example by bringing it from a cold place into a warm room, condensation may form on the inside. Use the device after the temperature difference has subsided.
-

## 4. Main Function

### 4.1 Navigation



1. Locket G7 main screen.  
Tap "Navigation"



2. Navigation software starts.
-

## 4. Main Function

### 4.2 Media Player



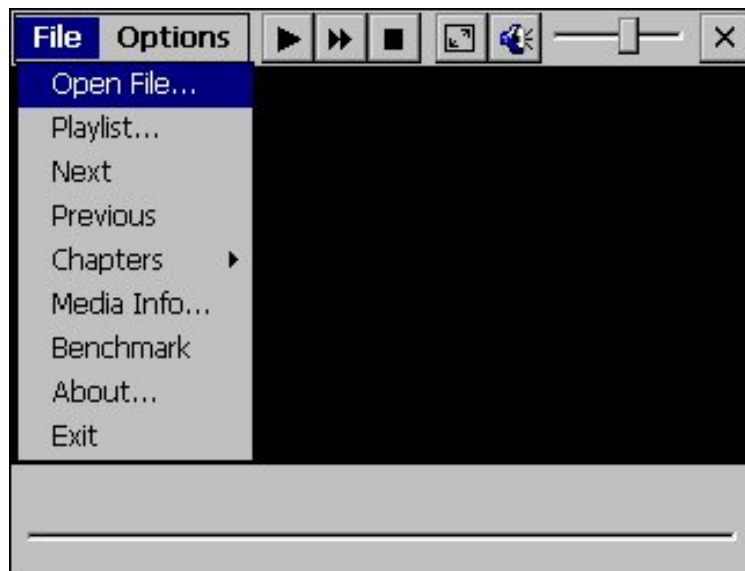
1. Locket G7 main screen.  
Tap "Media Player"



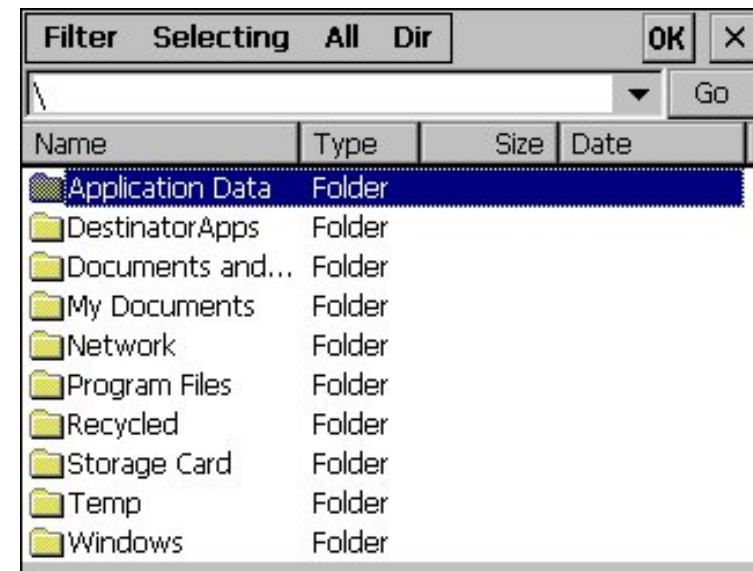
2. Media Player starts.

## 4. Main Function

### 4.2 Media Player



3. Tap “file” and  
select the “open file”



4. Select the folder for media files.

## 4. Main Function

### 4.3 MP3 Player



1. Locket G7 main screen.  
Tap "Mp3 Player"



2. Mp3 Player starts.
-

## 4. Main Function

### 4.3 MP3 Player



3. Tap “mp3 file” in the list



4. You can change the sound mode.

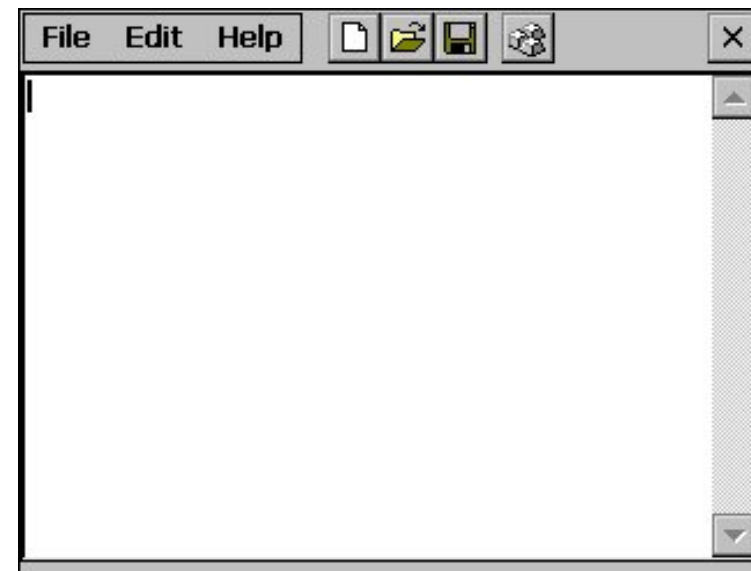
---

## 4. Main Function

### 4.4 Memo



1. Locket G7 main screen.  
Tap "Memo"

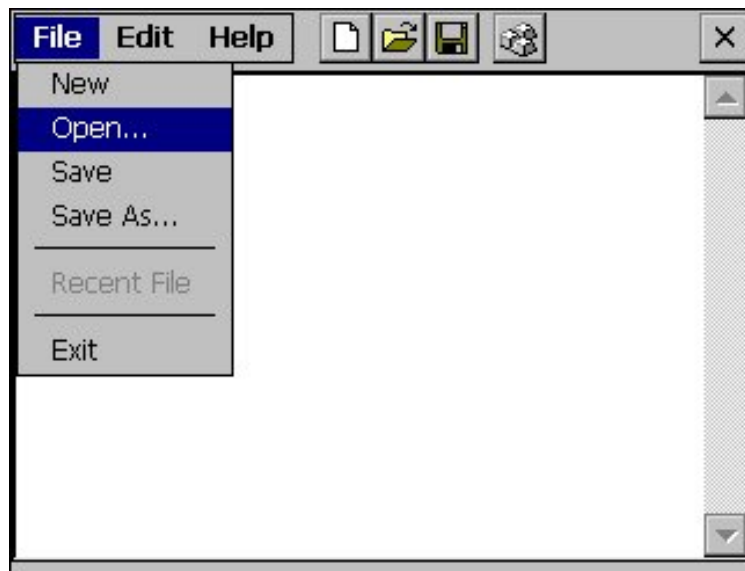


2. Memo Program starts.

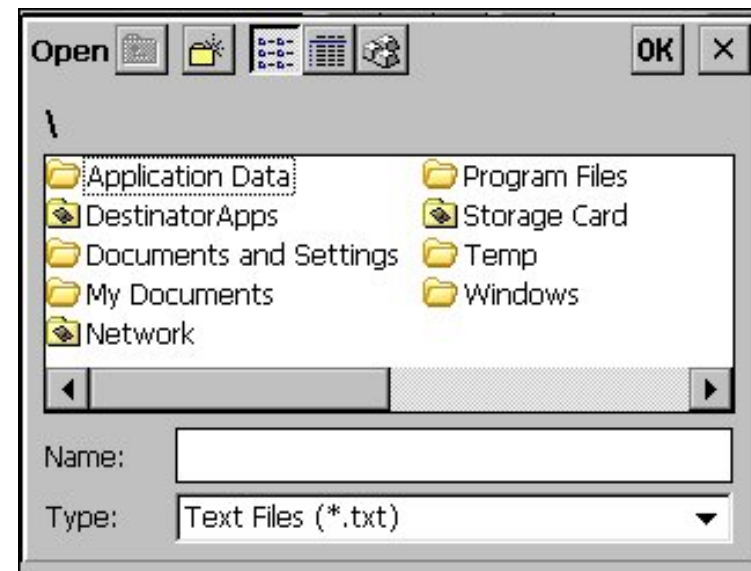


## 4. Main Function

### 4.5 Memo



3. Tap “file” and  
select the “open...”



4. Select the folder for text files.

---

## 4. Main Function

### 4.5 Setup



1. Loocket G7 main screen.  
Tap "Setup"



2. Setup main screen  
Tap "Backlight"

## 4. Main Function

### 4.5 Setup



3. Backlight main screen.

Control the backlight and tap  
“save”



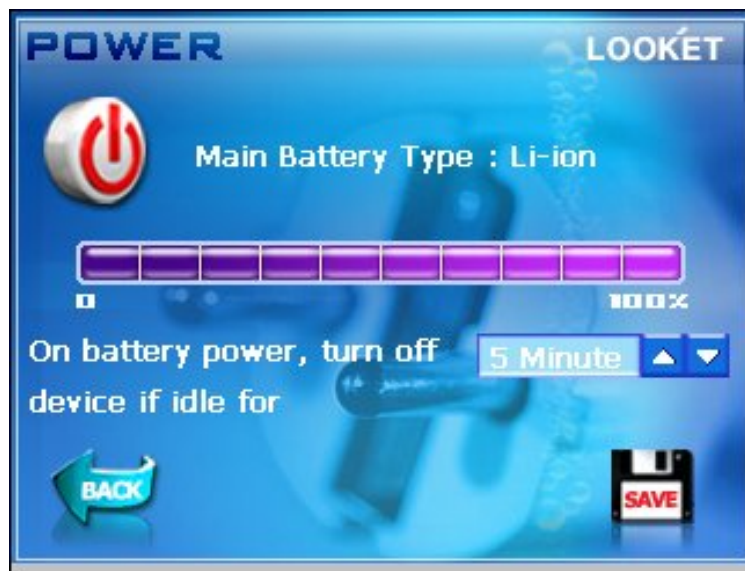
4. Volume main screen.

Control the volume and tap “save”

---

## 4. Main Function

### 4.5 Setup



5. Power main screen.

Check the power state and tap “save”



6. Power main screen.

You can change the turn off time

---

## 4. Main Function

### 4.5 Setup



7. Language selection main screen.  
You can change the language.



8. Date/Tim main screen.  
You can change the date/time.



## 4. Main Function

### 4.5 Setup



9. Calibration main screen.

You can calibrate the touch screen.



10. System main screen.

You can check the memory size.

---

## 4. Main Function

### 4.6 File explorer



1. Locket G7 main screen.  
Tap "File explorer"



2. File explorer main screen.

SysOnChip, Inc. warrants Locket G7 against defects in material and workmanship, under normal use and service, for one (1) year from the date of purchase only with the proof of purchase. And the warranty period might vary depending on the region, dealer, retailer or sales contract.

The warranty period of a rechargeable battery and consumables are six (6) months from the date of purchase. The Serial sticker on the battery should not be detached for the warranty.

Incompatibility is not a defect covered by SysOnChip's warranty. If the product is found to be defective in material or workmanship during this period, SysOnChip or one of its authorized distributors will, at its option, repair or replace the defective product without charge when furnished with proof of retail purchase. If you ship the product to SysOnChip or one of authorized distributors, you must use the original container or equivalent and the shipping charges are your responsibility. SysOnChip or distributors will bear shipping charges for returning the product.

This warranty does not apply to any product which has been subjected to alteration, unsealing or disassembly and detached warranty or serial number label at any case.

SysOnChip is not responsible for incidental or consequential damages resulting from breach of any express or implied warranty, including damage to property and, to the extent permitted by law, damages for personal injury. This warranty is in lieu of all other warranties including implied warranties of merchantability and fitness for a particular purpose.

※ HDD, LCD warranty

Locket PMP is portable device, therefore the free warranty cannot apply to HDD and LCD when it damaged from misusing or abuse.

※ Power supplies and cables

Any damages from using power supplies or cables which are not provided or officially approved by the manufacturer cannot be included in the warranty.

---



This warranty applies only to the original consumer purchaser and is not assignable or transferable. This warranty does not apply to any product which has been subjected to misuse, misapplication, abuse, abnormal use, negligence, alteration, accident, natural disaster or any product having its serial number altered or removed.

This warranty does not apply to any defects or damage directly or indirectly caused by or resulting from the use of unauthorized replacement parts and/or service performed by unauthorized person. And SysOnChip assumes no responsibility for any damages and loss of data as a result of malfunction, dead battery, or misuse of the product in any way.

=====

Some jurisdictions do not allow the exclusion or limitation of incidental or consequential damages, so the above limitations or exclusion may not apply to you. This limited warranty gives you specific legal right, and you may also have other rights that vary from jurisdiction to jurisdiction

## **SysOnChip, Inc.**

### **Address**

14FL, Sahakyeongum Bldg., 929, Dunsan-dong,  
Seo-gu, Daejeon, 302-120, Korea

### **Phone / Fax Number**

Tel : +82.42.864.4665

Fax : +82.42.864.4664

### **Sales Contact**

E-mail: [dian@sysonchip.co.kr](mailto:dian@sysonchip.co.kr)

### **Website URL**

<http://www.sysonchip.co.kr>



### FCC NOTICE

THIS DEVICE COMPLIES WITH PART 15 OF THE FCC RULES.  
OPERATION IS SUBJECT TO THE FOLLOWING TWO CONDITION:  
(1) THIS DEVICE MAY NOT CAUSE HARMFUL INTERFERENCE, AND  
(2) THIS DEVICE MUST ACCEPT ANY INTERFERENCE RECEIVED,  
INCLUDING INTERFERENCE THAT MAY CAUSE UNDERSIRED  
OPERATION.

This equipment has been tested and found to comply with the limits for a Class B digital device, pursuant to part 15 of the FCC Rules. These limits are designed to provide reasonable protection against harmful interference in a residential installation. This equipment generates, uses and can radiate radio frequency energy and, if not installed and used in accordance with the instructions, may cause harmful interference to radio communication. However, there is no guarantee that interference will not occur in a particular installation. If this equipment does cause harmful interference to radio or television reception, which can be determined by turning the equipment off and on, the user is encouraged to try to correct the interference by one or more of the following measures :

- Reorient or relocate the receiving antenna.
- Increase the separation between the equipment and receiver.
- Connect the equipment into an outlet on a circuit different from that to which the receiver is connected.
- Consult the dealer or an experienced radio/TV technician for help.

NOTE : The manufacturer is not responsible for any radio or TV interference caused by unauthorized modifications to this equipment. Such modifications could void the user's authority to operate the equipment.